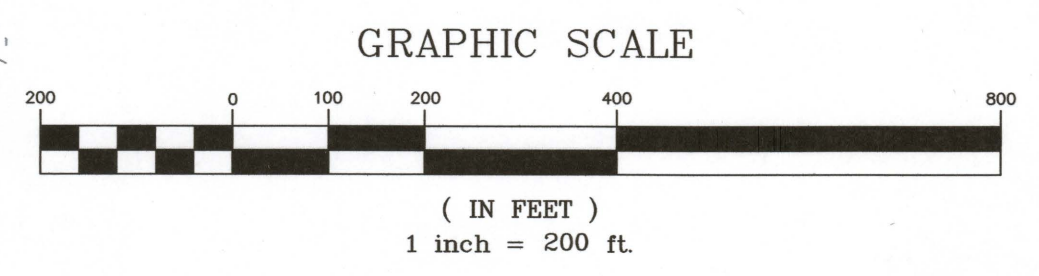


REFERENCE:  
BASE SURVEY MAP PROVIDED BY  
BENNETT & SMILAS ASSOCIATES  
415 KILLINGWORTH ROAD  
P.O. BOX 241  
HIGGANUM, CT. 06441-0241

- ### LEGEND
- PROPERTY LINE
  - WETLAND LINE
  - WETLAND BUFFER LINE
  - WETLAND AREA
  - EXIST. EDGE OF PAVEMENT
  - EXIST. STONE WALL
  - EXIST. GROUND CONTOUR
  - EXIST. WATERCOURSE
  - EXIST. WATER MAIN
  - PROPOSED WATER MAIN
  - PROPOSED EASEMENT LINE
  - EXIST. TREE LINE

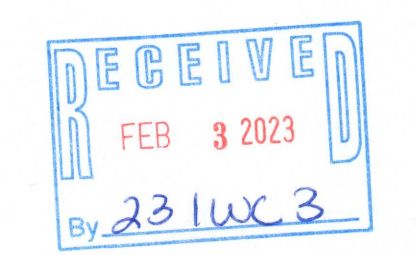



**NOTE:**  
1. WETLANDS LIMITS DEPICTED ON THIS PLAN WERE DELINEATED BY RICHARD SNARSKI, CERTIFIED SOIL SCIENTIST AND LOCATED IN THE FIELD BY BENNETT & SMILAS ENGINEERING, INC. IN APRIL 1998  
2. FLOOD ZONE LOCATION FROM FIRM FLOOD INSURANCE RATE MAP NEW LONDON COUNTY, CONNECTICUT. PANEL 331 OF 554 COMMUNITY: TOWN OF MONTVILLE NO. 090099 PANEL 331G MAP NUMBER 09011C0331G EFFECTIVE DATE: JULY 18, 2011  
3. UPDATED WETLANDS IN THE VICINITY OF THE WATER MAN CROSSING DELINEATED BY JOSEPH R. THEROUX, CERTIFIED SOIL SCIENTIST IN ACCORDANCE WITH THE STANDARDS OF THE NATIONAL COOPERATIVE SOIL SURVEY AND THE DEFINITIONS OF WETLANDS AS FOUND IN THE CONNECTICUT STATUTES, CHAPTER 440, SECTIONS 22A-38 DATE 12/2/2022



### LOCATION MAP

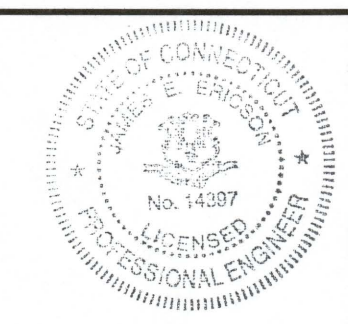
SCALE 1"=2000'



**Lenard Engineering, Inc.**  
A DIVISION OF HALEY WARD, INC.  
2210 Main Street, P.O. Box 1088  
Glastonbury, Connecticut 06033  
860.659.3100  
WWW.HALEYWARD.COM

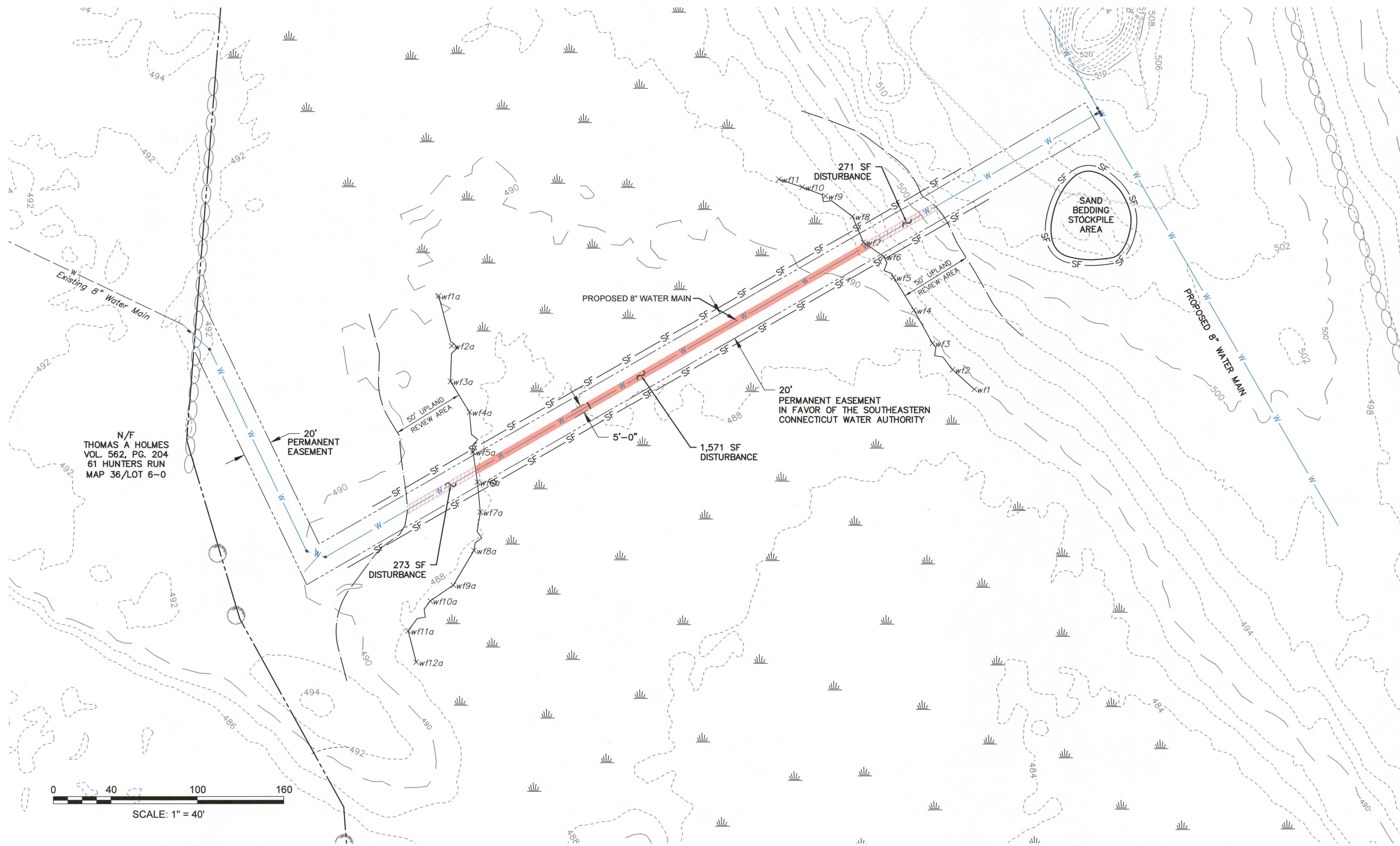
**PROJECT**  
SOUTHEASTERN CONNECTICUT WATER AUTHORITY  
**WATER SYSTEM INTERCONNECTION**  
OLD COLCHESTER ROAD, MONTVILLE, CT.

**TITLE**  
OVERALL PROJECT PLAN



DATE	2023.01.03	SCALE	AS NOTED
DRAWN BY	KLD	DESIGNED BY	JED
CHECKED BY	JEE		
PROJECT NO.	20-402		
DRAWING NO.	1 OF 3		





LEGEND	
—	PROPERTY LINE
x wf8	WETLAND FLAG
—	WETLAND LINE
—	WETLAND BUFFER LINE
—	WETLAND DISTURBANCE AREA
—	BUFFER DISTURBANCE AREA
—	EXIST. EDGE OF PAVEMENT
—	EXIST. STONE WALL
— 498 —	EXIST. GROUND CONTOUR
—	EXIST. WATERCOURSE
—	EXIST. WATER MAIN
—	PROPOSED WATER MAIN
—	PROPOSED EASEMENT LINE
—	EXIST. TREE LINE
— SF — SF — SF —	SILT FENCE/WATTLE

DATA TABLE:	
TOTAL WETLAND DISTURBANCE AREA = 1,571 SF	0.03 ACRES
TOTAL WETLAND BUFFER DISTURBANCE AREA = 544 SF	

UPDATED WETLANDS IN VICINITY OF WATER MAIN CROSSING DELINEATED BY JOSEPH R. THEROUX, CERTIFIED SOIL SCIENTIST IN ACCORDANCE WITH THE STANDARDS OF THE NATIONAL COOPERATIVE SOIL SURVEY AND THE DEFINITIONS OF WETLANDS AS FOUND IN THE CONNECTICUT STATUTES, CHAPTER 440, SECTIONS 22A-38. DATE: 12/2/2022

### PROPOSED CONSTRUCTION SEQUENCE

1. WORK TO BE CONDUCTED IN DRY SEASON (JULY 1-SEPT. 30), AND DURING NON-RAINFALL PERIODS.
2. CONDUCT LIMITED CLEARING SUFFICIENT TO INSTALL WATTLES AND SILT FENCE.
3. INSTALL EROSION PROTECTION - WATTLES AND SILT FENCE.
4. CLEAR BRUSH AS NEEDED FOR WATER MAIN INSTALLATION.
5. EXCAVATE WATER MAIN TRENCH. SEGREGATE WETLAND TOPSOIL FOR REUSE WHERE POSSIBLE.
6. INSTALL WATER MAIN.
7. IF DEWATERING IS NECESSARY, PUMP ALL WATER THROUGH A SILT SACK, PRIOR TO DISCHARGE.
8. RESTORE TOP SURFACE OF DISTURBED TRENCH WITH WETLAND SOILS. SUPPLEMENT AS NECESSARY.
9. APPLY WETLAND PLANTINGS MIX FOR DISTURBED AREA.
10. UPON VEGETATIVE ESTABLISHMENT, REMOVE EROSION CONTROLS.



**Lenard Engineering, Inc.**  
A DIVISION OF HALEY WARD, INC.  
2210 Main Street, P.O. Box 1088  
Glastonbury, Connecticut 06033  
860.659.3100

PROJECT

**SOUTHEASTERN CONNECTICUT WATER AUTHORITY**

**WATER SYSTEM INTERCONNECTION**  
OLD COLCHESTER ROAD, MONTVILLE, CT.

TITLE

**WETLAND AREA DETAIL PLAN**



DATE2023.01.03SCALE1"=40'

DRAWN BYKLDDESIGNED BYKLD

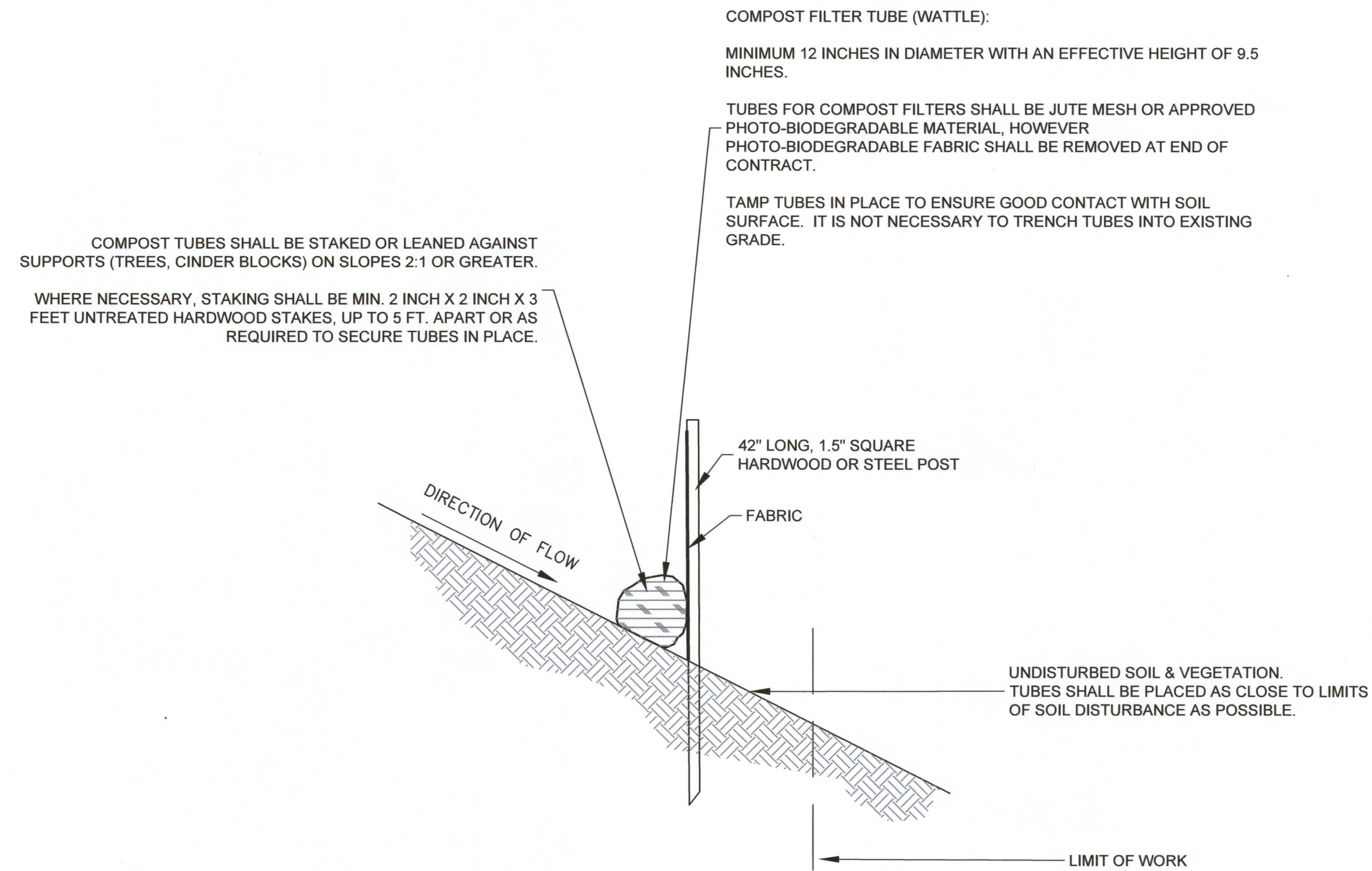
CHECKED BYJEE

PROJECT No.20-402

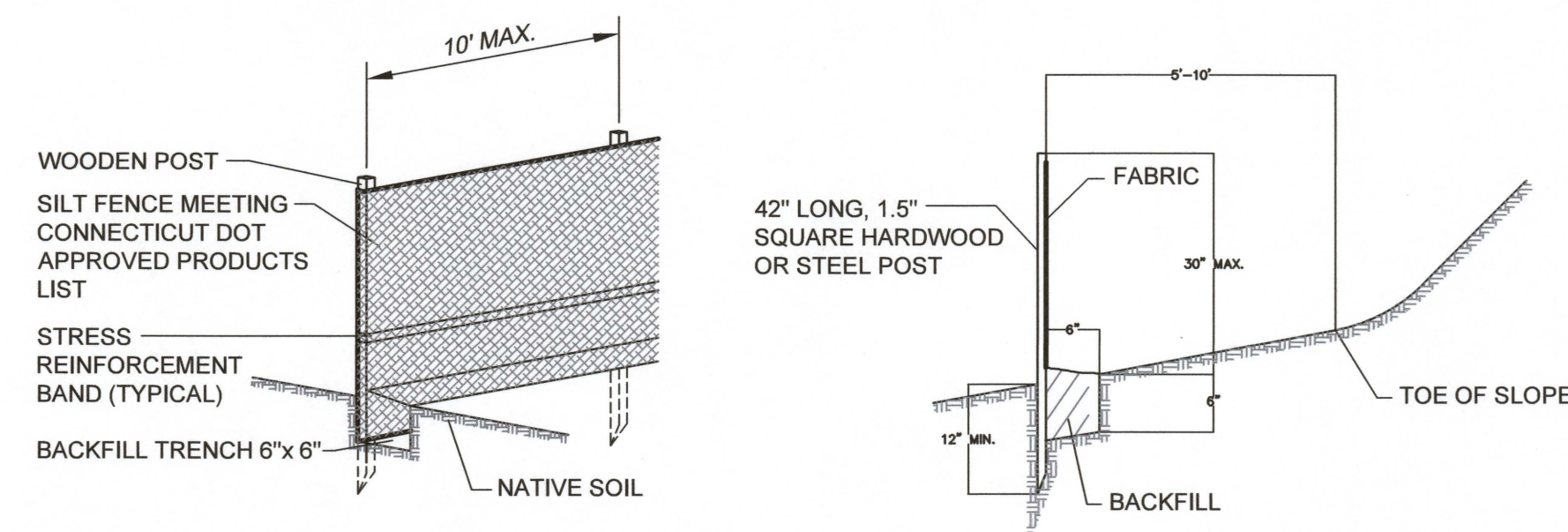
DRAWING No.2 OF 3

FILE LOCATION: K:\32-402-SDWA-SEVEN-QUARTERS\PRODUCTION DRAWINGS\WETLANDS APPLICATION PLANS.DWG, 2023.01.10, 10:00 AM

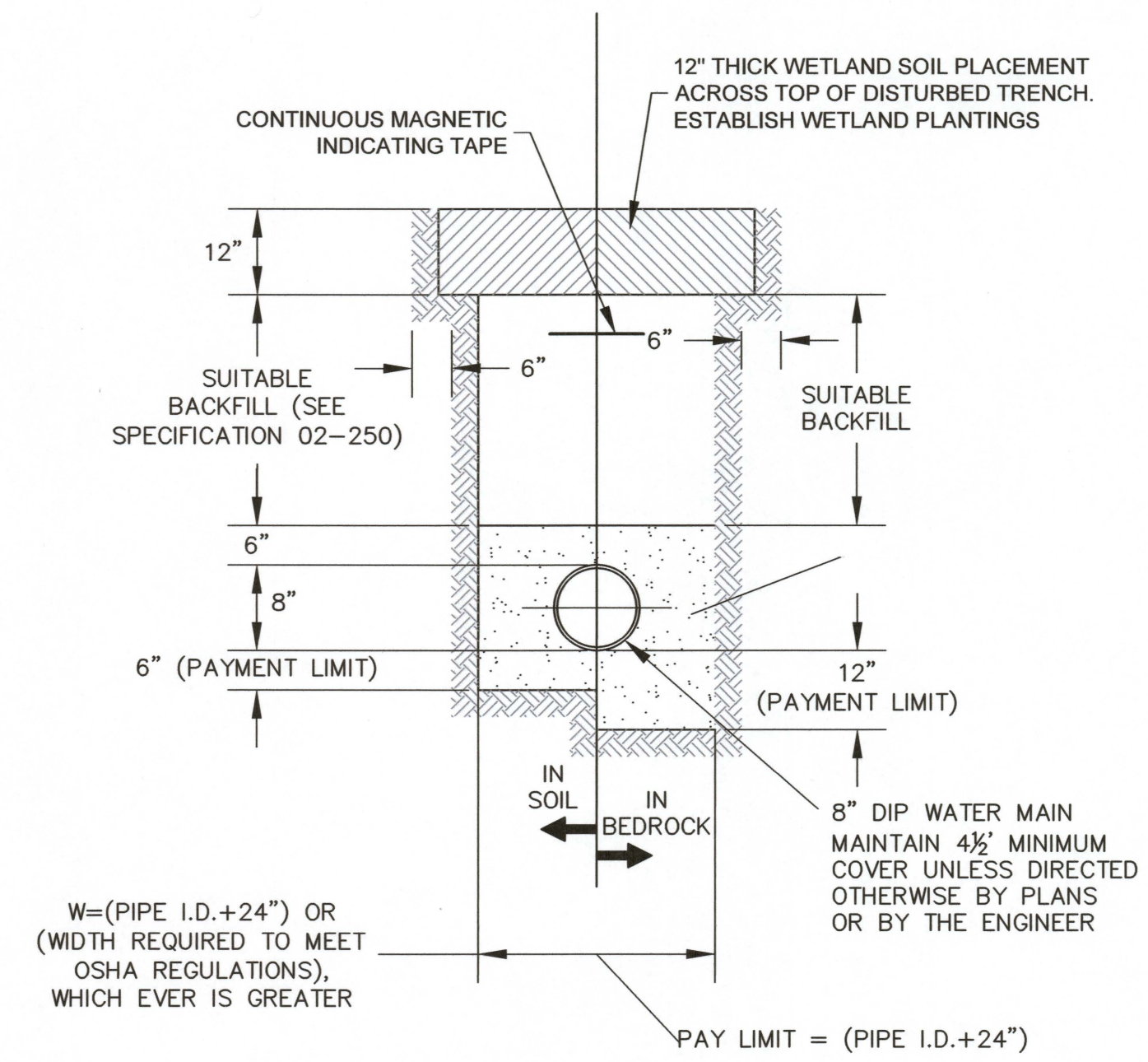





**SILT FENCE / WATTLE DETAIL**  
NOT TO SCALE



**SILT FENCE**  
NOT TO SCALE



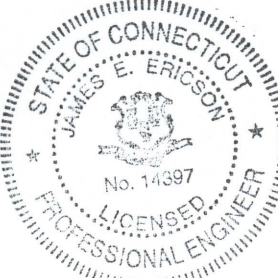
**WATER MAIN TRENCH**  
NOT TO SCALE



**Lenard Engineering, Inc.**  
A DIVISION OF HALEY WARD, INC.

2210 Main Street, P.O. Box 1088  
Glastonbury, Connecticut 06033  
860.659.3100

WWW.HALEYWARD.COM

PROJECT			
SOUTHEASTERN CONNECTICUT WATER AUTHORITY			
WATER SYSTEM INTERCONNECTION OLD COLCHESTER ROAD, MONTVILLE, CT.			
TITLE			
DETAIL SHEET			
	DATE	2023.01.03	SCALE
	DRAWN BY	KLD	DESIGNED BY
	KLD	CHECKED BY	JEE
	PROJECT No.		
20-402			REV.
DRAWING No.			3 OF 3