

ZONING NOTES

1. THE PROJECT SHALL COMPLY WITH THE REQUIREMENTS OF MONTVILLE ZONING REGULATIONS SECTION 4.3 (CERTIFICATE OF COMPLIANCE).
2. OWNER IS RESPONSIBLE FOR COMPLIANCE WITH ALL REQUIREMENTS OF THE POLLUTION PREVENTION PLAN, OPERATION AND MAINTENANCE OF DRAINAGE SYSTEM, AND EROSION CONTROL & SEDIMENTATION NARRATIVE.
3. IN ACCORDANCE WITH SECTION 17.3 OF THE ZONING REGULATIONS, DIGITAL DATA SHALL BE SUBMITTED TO THE LAND USE DEPT. PRIOR TO ISSUANCE OF ANY ZONING PERMIT TO START WORK.
4. ANY PROPOSED SIGNS (FREE STANDING OR WALL MOUNTED) SHALL REQUIRE AN APPROVED ZONING PERMIT PRIOR TO CONSTRUCTION. A ZONING PERMIT FOR ANY AND ALL FUTURE SIGNAGE SHALL BE SUBMITTED TO THE LAND USE OFFICE PRIOR TO CONSTRUCTION.

POLLUTION PREVENTION PLAN

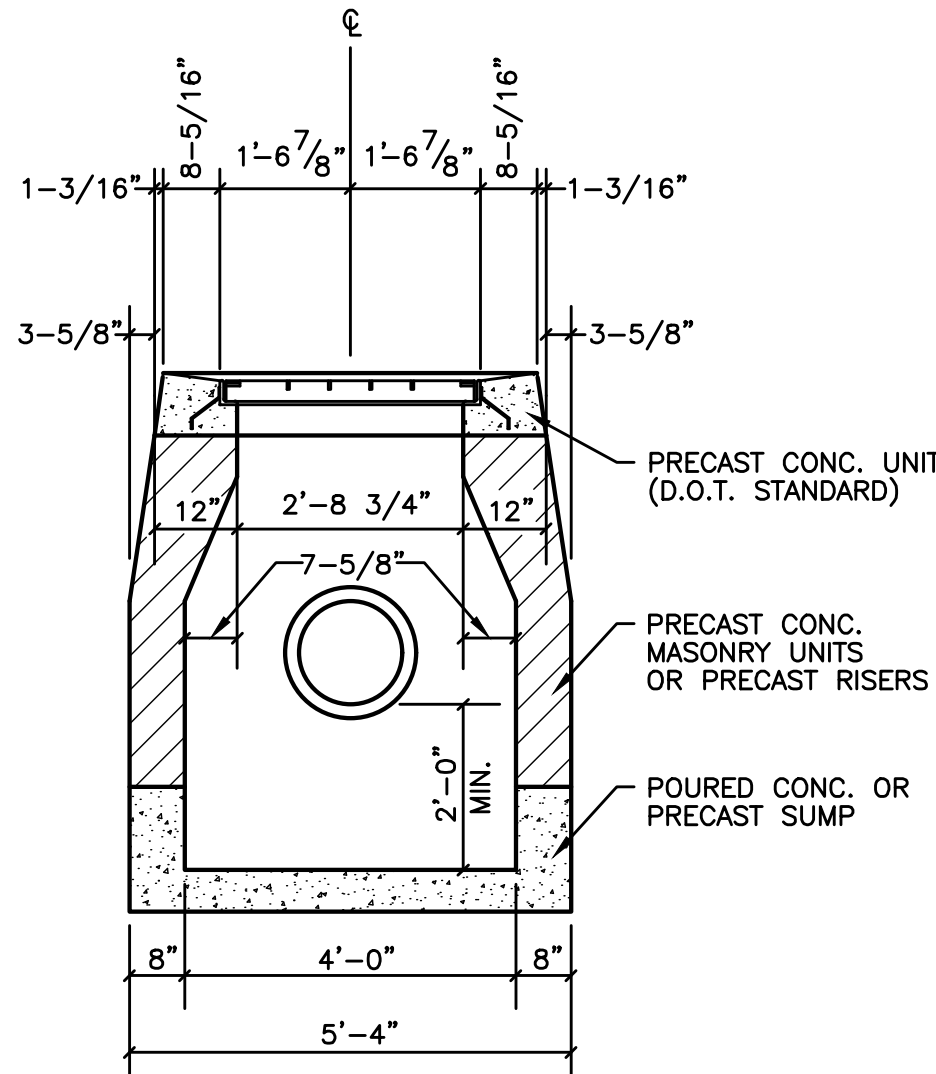
1. POLLUTION PREVENTION TEAM  
THE OWNERS WILL BE RESPONSIBLE FOR CARRYING OUT THE PROVISIONS OF THIS PLAN.
- PARKING LOTS, DRIVEWAYS AND OTHER IMPERVIOUS SURFACES SHALL BE SWEEP CLEAN OF SAND AND LITTER AND ANY OTHER POLLUTANTS AT LEAST TWICE A YEAR.
- A. BETWEEN NOVEMBER 15 AND DECEMBER 15 (AFTER LEAF FALL)  
B. DURING APRIL (AFTER SNOW MELT) NO WASHING VEHICLES OR EQUIPMENT IN PARKING AREAS.
2. MAINTENANCE AND INSPECTION  
A. MONTHLY INSPECTION OF STORM WATER STRUCTURES AND OUTFALLS.  
B. CLEAN SEDIMENT AND DEBRIS FROM STRUCTURES AND OUTFALLS ONCE A YEAR DURING APRIL.  
C. SUBMIT MAINTENANCE & INSPECTION REPORT TO THE PLANNING DEPARTMENT AND THE DIRECTOR OF PUBLIC WORKS
3. CLEAN SEDIMENT AND DEBRIS FROM BASIN ONCE A YEAR, DURING APRIL
4. SPILL OR ACCIDENTAL DISCHARGE  
COMPLY WITH STATE AND FEDERAL REGULATIONS TO CONTAIN AND CLEAN UP ANY SPILL OR DISCHARGE AND DISPOSE OF MATERIALS AT AN APPROVED FACILITY.
- CONTACT CONNECTICUT DEEP OIL AND CHEMICAL SPILL RESPONSE DIVISION (860) 424-3338 AND THE MONTVILLE MAYOR.
- IN THE EVENT A SPILL OCCURS THE FOLLOWING STEPS SHOULD BE PERFORMED AS SOON AS POSSIBLE:
- A. STOP THE SOURCE OF THE SPILL  
B. CONTAIN THE SPILL  
C. COVER SPILL WITH ABSORBENT MATERIAL SUCH AS KITTY LITER, SAWDUST OR OIL ABSORBENT PADS. DO NOT USE STRAW.  
D. DISPOSE OF ABSORBER IN ACCORDANCE WITH LOCAL AND STATE REGULATIONS.
5. BEST MANAGEMENT PRACTICES FOR FUTURE UPKEEP OF THE SITE WILL INCLUDE NON-CHEMICAL LAWN CARE & MINIMAL USE OF FERTILIZERS, DE-ICING OR WINTER OPERATIONS WITHOUT THE USE OF CALCIUM, AND NO EXTERIOR WASHING OF VEHICLES OR DISCHARGING OF INTERIOR WASH WATER.

OPERATION AND MAINTENANCE OF DRAINAGE SYSTEM

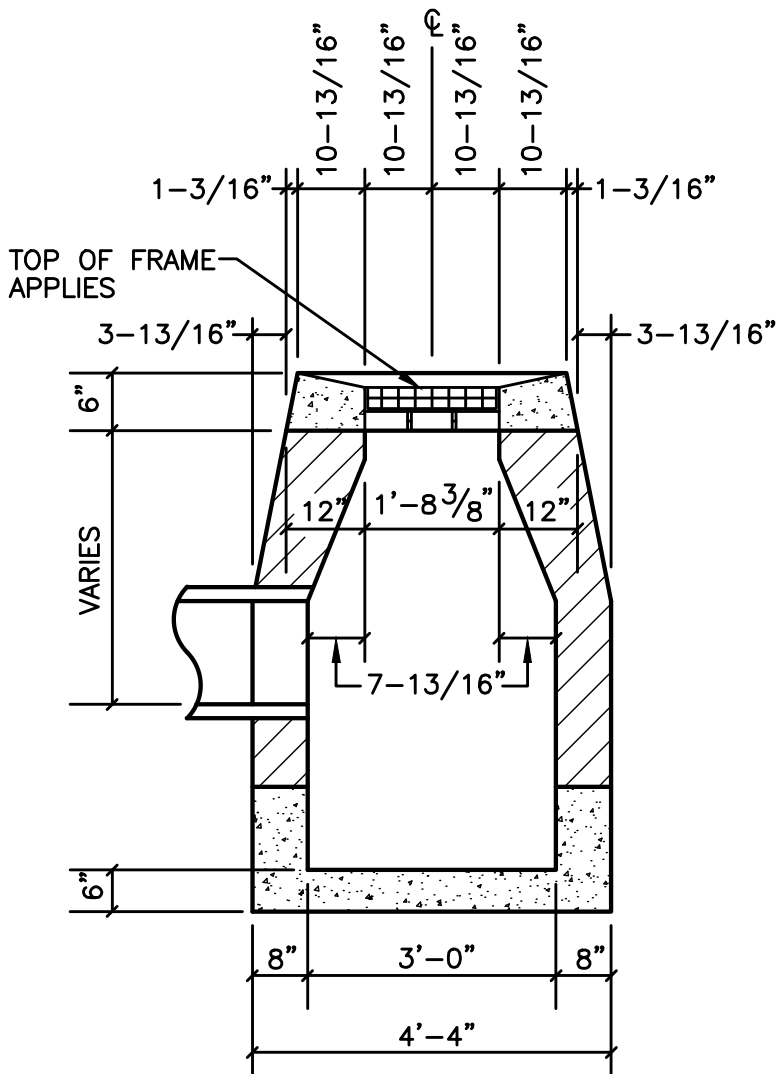
1. THE PROPERTY OWNER IS RESPONSIBLE FOR THE OPERATION AND MAINTENANCE OF THE DRAINAGE SYSTEM.
2. ALL STORMWATER BASINS AND RIPRAP LEVEL SPREADERS SHALL BE CLEANED OUT TWICE A YEAR, IN THE FALL AFTER THE LEAVES HAVE FALLEN AND IN THE SPRING AND ALL SEDIMENTS ARE TO BE REMOVED.
3. THE STORMWATER BASINS SHALL BE MOWED TWICE A YEAR.

EROSION CONTROL & SEDIMENTATION NARRATIVE

1. PRIOR TO THE INSTALLATION OF ANY EROSION AND SEDIMENT CONTROL MEASURES, THE OWNER AND CONTRACTOR SHALL MEET WITH THE TOWN OF MONTVILLE LAND USE DEPARTMENT.
2. STAKE LIMITS OF CLEARANCE
3. THE EROSION AND SEDIMENT CONTROL MEASURES SHALL BE INSTALLED AS SHOWN ON SHEETS 5 & 6 PRIOR TO SITE DISTURBANCE. ADDITIONAL EROSION & SEDIMENT CONTROL MEASURES SHALL BE INSTALLED IF DETERMINED TO BE NECESSARY BY THE ZONING ENFORCEMENT OFFICER FROM LAND USE DEPARTMENT.
4. INSTALL CONSTRUCTION ENTRANCE PER DETAIL.
5. THE CONTRACTOR SHALL CONTACT THE ZONING ENFORCEMENT OFFICER FOR INSPECTION OF THE SEDIMENT AND EROSION CONTROL MEASURES, PRIOR TO SITE DISTURBANCE. CONSTRUCTION SHALL NOT BEGIN UNTIL SUCH TIME AS THE ZONING ENFORCEMENT OFFICER HAS REVIEWED AND APPROVED THE INSTALLATION OF THE SEDIMENTATION AND EROSION CONTROL MEASURES.
6. CONTRACTOR TO INSPECT ALL EROSION AND SEDIMENT CONTROL MEASURES, SEDIMENTATION BASINS & SWALES AT LEAST WEEKLY AND AFTER EVERY STORM EVENT AND REPAIR AND MAINTAIN AS NECESSARY.
7. CLEARING & GRUBBING OF THE AREA TO BE GRADED. TOPSOIL TO BE REMOVED & STOCKPILED IN AN AREA OF BUILDING & SURROUNDED WITH SILT FENCE.
8. CONSTRUCT WATER QUALITY BASINS TO FUNCTION AS TEMPORARY SEDIMENT TRAPS PRIOR TO ROUGH GRADING OF THE SITE.
9. INSTALL DIVERSION SWALES AS SHOWN ON SHEET 5 AND DETAIL ON THIS SHEET.
10. ROUGH GRADE SITE, EXCAVATE FOR BUILDING FOOTINGS, INSTALL SEPTIC & UTILITIES.
11. BUILDING CONSTRUCTION TO PROCEED.
12. INSTALL SEPTIC SYSTEM & UTILITIES.
13. TOPSOIL SHALL BE RE-APPLIED TO PROVIDE A MINIMUM DEPTH OF FOUR INCHES.
14. ALL DISTURBED AREAS SHALL BE SEEDED AND MULCHED. ALL EROSION AND SEDIMENTATION CONTROL MEASURES SHALL REMAIN IN PLACE UNTIL VEGETATION IS RE-ESTABLISHED.
15. ONCE THE SITE IS STABILIZED, REMOVE ALL SEDIMENT FROM FOREBAYS & WATER QUALITY BASIN
16. REMOVE AN ADDITIONAL 12" OF MATERIAL BELOW ELEVATION 36 AND INSTALL 12" OF TOP SOIL.
17. SEEDING SHOULD TAKE PLACE BETWEEN APRIL 1 AND JUNE 1 OR AUGUST 15 AND OCTOBER 1.
18. THE FOLLOWING SEEDING MIXTURES SHALL BE PROVIDED ON ALL DISTURBED AREAS.
- |                     |            |
|---------------------|------------|
| KENTUCKY BLUE GRASS | 20 LB's/AC |
| CREeping RED FESCUE | 20 LB's/AC |
| PERENNIAL RYEGRASS  | 5 LB's/AC  |
19. UNFORESEEN PROBLEMS WHICH ARE ENCOUNTERED IN THE FIELD SHALL BE SOLVED ACCORDING TO CONNECTICUT GUIDELINES FOR SOIL AND SEDIMENT CONTROL AS APPROVED BY THE DIRECTOR OF MONTVILLE LAND USE DEPARTMENT OR THE MONTVILLE PLANNING & ZONING COMMISSION.



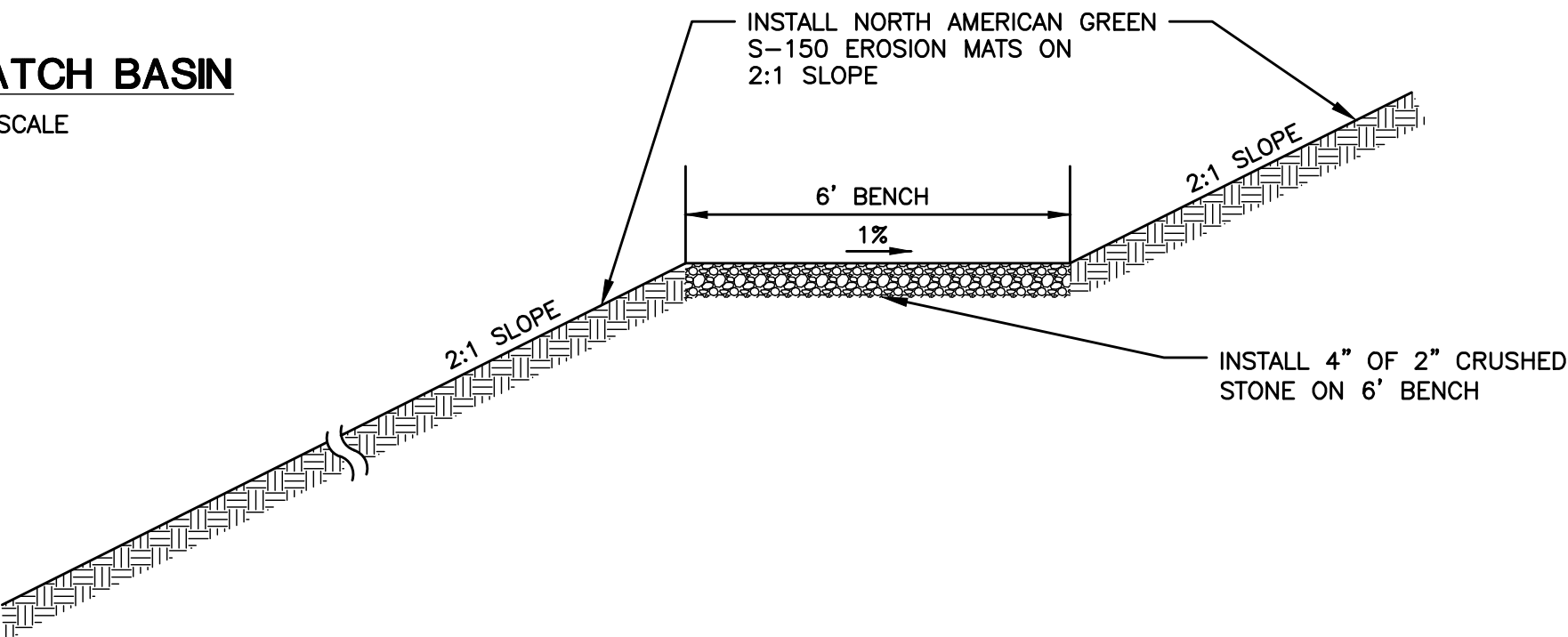
FRONT ELEVATION



SIDE ELEVATION

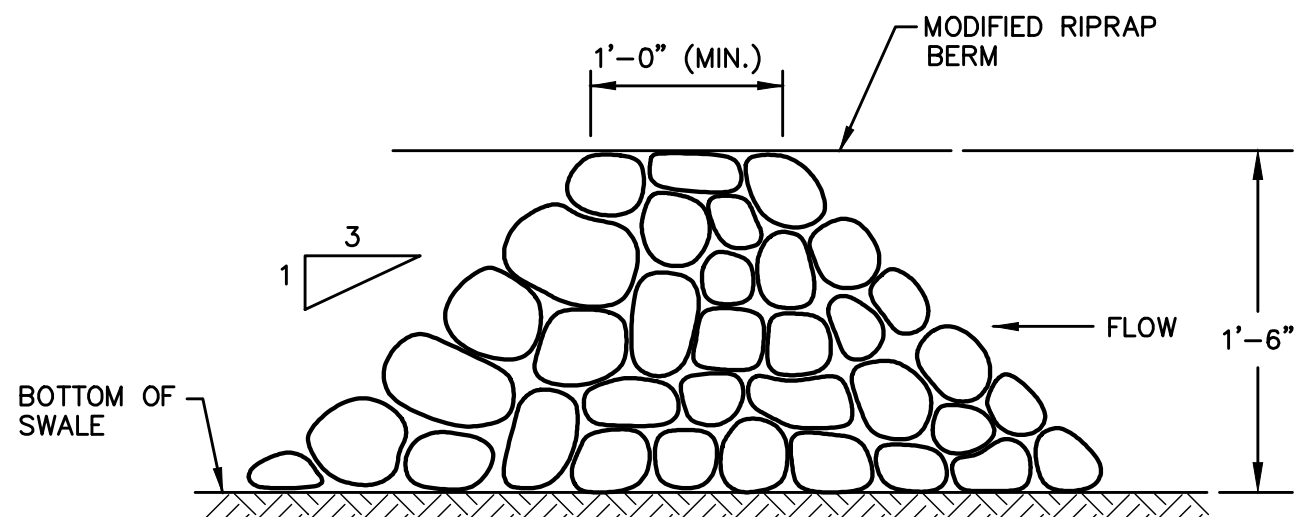
TYPE "C-L" CATCH BASIN

NOT TO SCALE



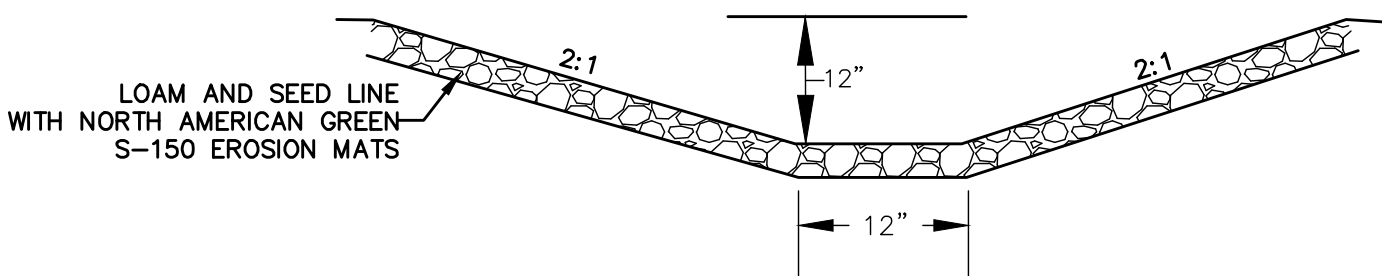
6' BENCH IN 2:1 SLOPE

NOT TO SCALE



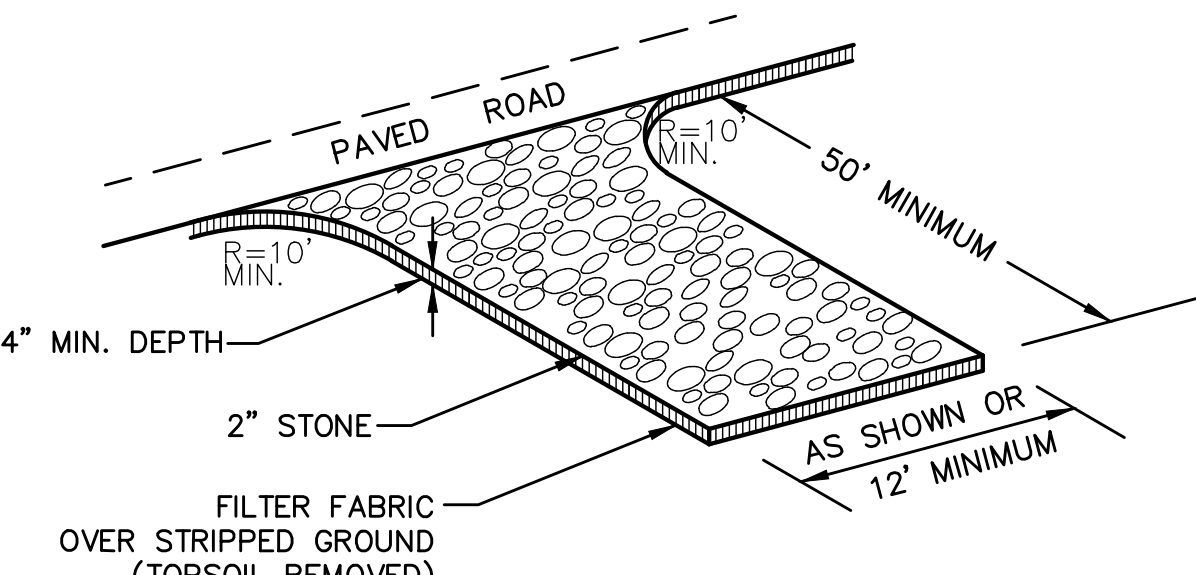
STONE CHECK DAM

NOT TO SCALE



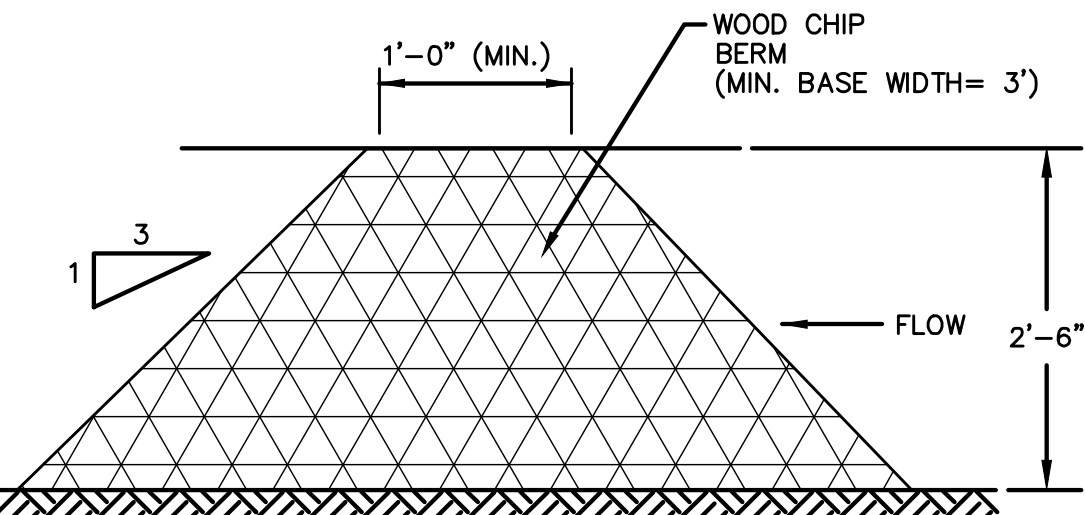
PERMANENT DIVERSION SWALE

NOT TO SCALE



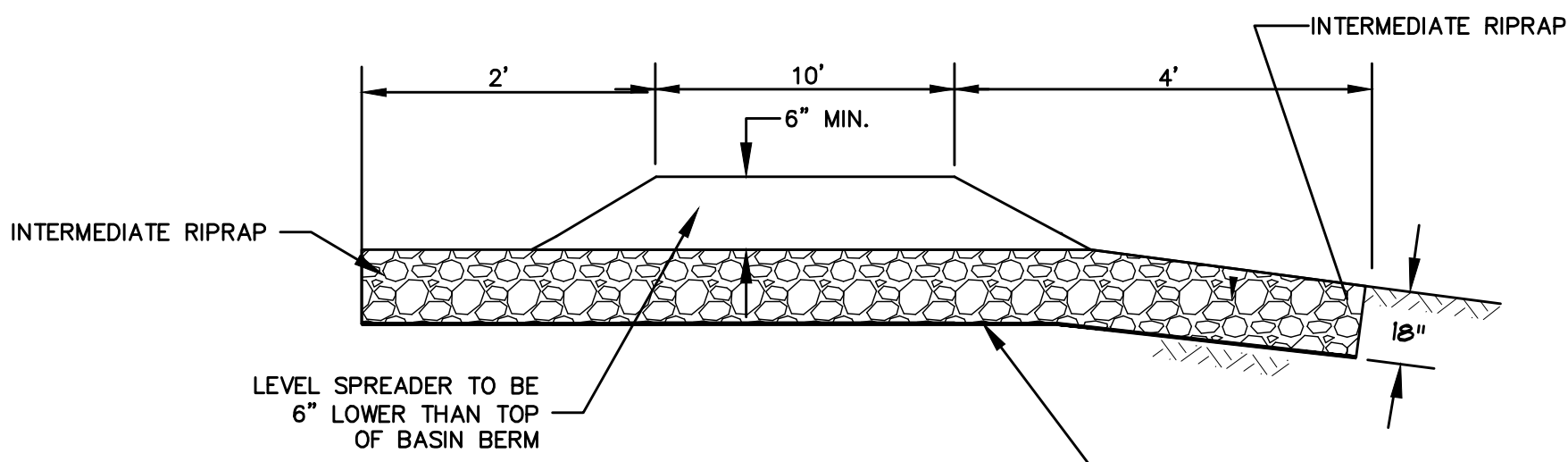
CONSTRUCTION ENTRANCE

NOT TO SCALE



WOOD CHIP BERM

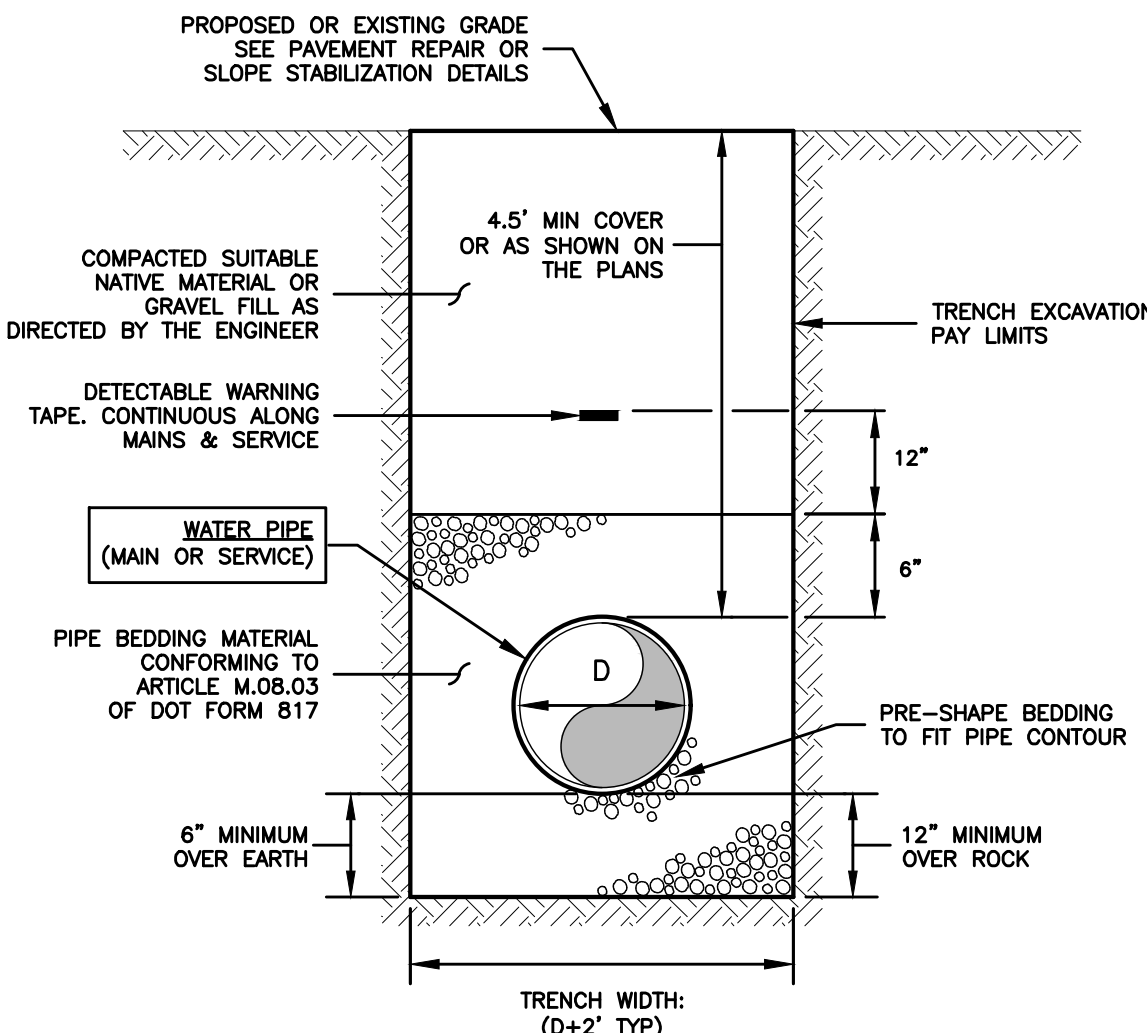
NOT TO SCALE



LEVEL SPREADER

NOT TO SCALE

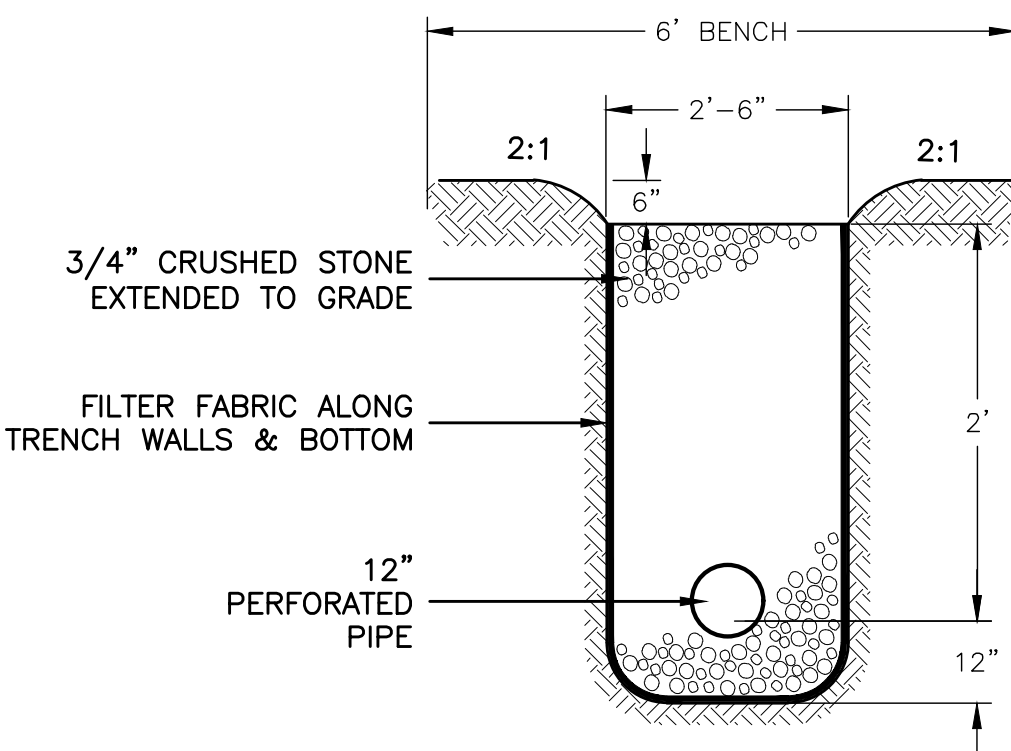
PERVIOUS FILTER FABRIC  
\* IN ACCORDANCE WITH  
SECTION 2.19.02 OF  
D.O.T. FORM 816



- NOTES:
1. D=INSIDE DIAMETER OF PIPE.
2. TRENCH WIDTHS NOTED ARE SET TO ESTABLISH PAY LIMITS ONLY.
3. ALL EXCAVATIONS MUST MEET OSHA STANDARDS.
4. CONTRACTOR TO PROVIDE COMPACTION ON ALL TRENCH BACKFILLS, EXCAVATIONS AND PAVEMENT BASES TO NOT LESS THAN 95% OF THE DRY DENSITY FOR THAT MATERIAL.
5. BEDDING MATERIAL TO CONFORM TO M.08.03.1 AS PER CT DOT FORM 817.

TRENCH DETAIL: WATER MAIN & SERVICE

NOT TO SCALE

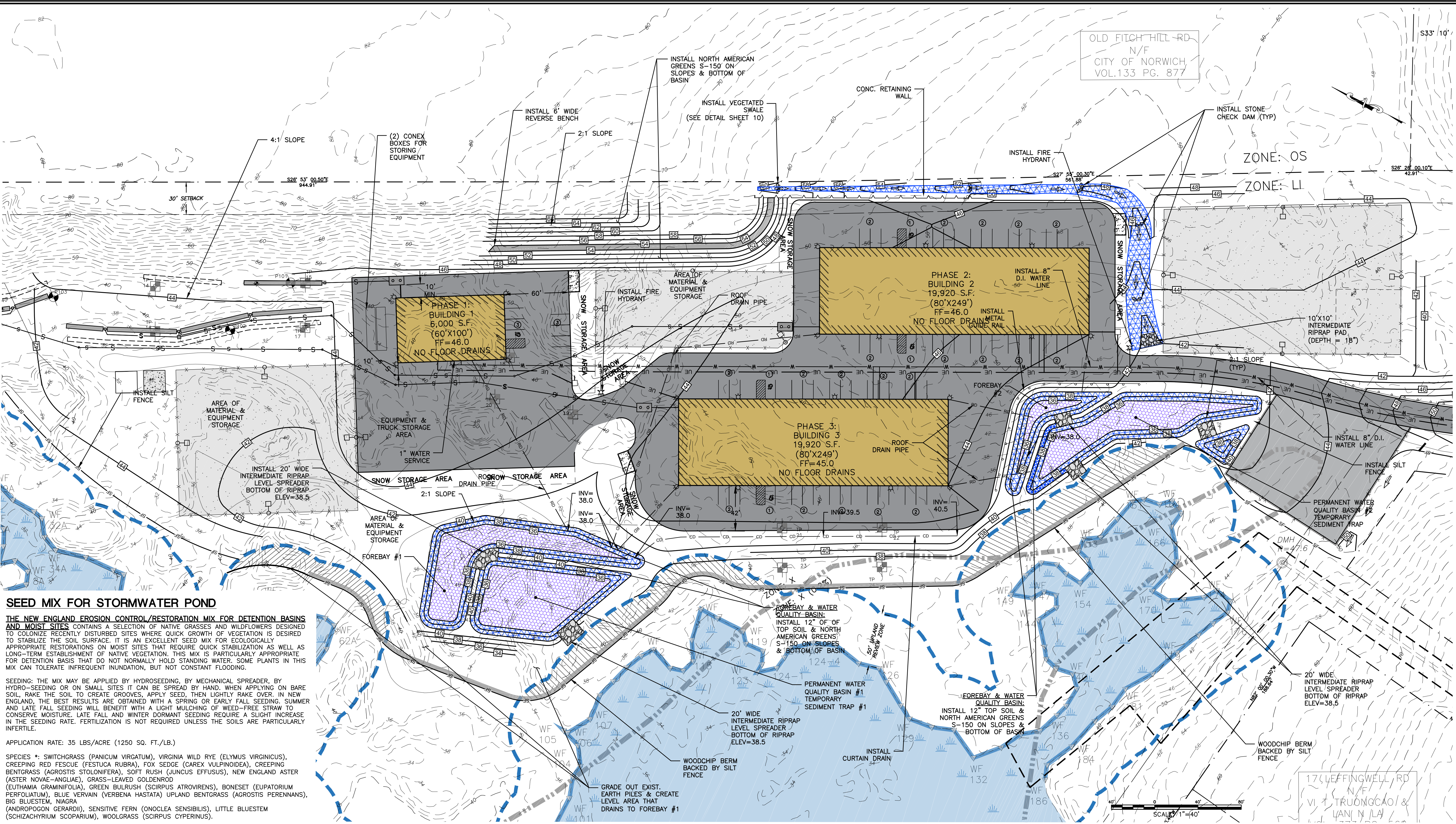


CURTAIN DRAIN DETAIL

NOT TO SCALE

GREEN SITE DESIGN LLC			
317 Main Street Norwich, Connecticut (860) 892-1380 Fax (860) 886-9165			
MONTVILLE, CT			
69 FITCH HILL RD & LEFFINGWELL RD			
E&S DETAILS			
Project No. GSD-68			
Proj. Engineer E.M.B.			
Date: 2/15/23			
Sheet No. 12			





### SEED MIX FOR STORMWATER POND

**THE NEW ENGLAND EROSION CONTROL/RESTORATION MIX FOR DETENTION BASINS AND MOIST SITES** CONTAINS A SELECTION OF NATIVE GRASSES AND WILDFLOWERS DESIGNED TO COLONIZE RECENTLY DISTURBED SITES WHERE QUICK GROWTH OF VEGETATION IS REQUIRED TO STABILIZE THE SOIL SURFACE. IT IS AN EXCELLENT SEED MIX FOR ECOLOGICALLY APPROPRIATE RESTORATIONS ON MOIST SITES THAT REQUIRE QUICK STABILIZATION AS WELL AS LONG-TERM ESTABLISHMENT OF NATIVE VEGETATION. THIS MIX IS PARTICULARLY APPROPRIATE FOR DETENTION BASINS THAT DO NOT NORMALLY HOLD STANDING WATER. SOME PLANTS IN THIS MIX CAN TOLERATE INFREQUENT INUNDATION, BUT NOT CONSTANT FLOODING.

**SEEDING:** THE MIX MAY BE APPLIED BY HYDROSEEDING, BY MECHANICAL SPREADER, BY HYDRO-SEEDING OR ON SMALL SITES IT CAN BE SPREAD BY HAND. WHEN APPLYING ON BARE SOIL, RAKE THE SOIL TO CREATE GROOVES, APPLY SEED, THEN LIGHTLY RAKE OVER. IN NEW ENGLAND, THE BEST RESULTS ARE OBTAINED WITH A SPRING OR EARLY FALL SEEDING. SUMMER AND LATE FALL SEEDING WILL BENEFIT WITH A LIGHT MULCHING OF WEED-FREE STRAW TO CONSERVE MOISTURE. LATE FALL AND WINTER DORMANT SEEDING REQUIRE A SLIGHT INCREASE IN THE SEEDING RATE. FERTILIZATION IS NOT REQUIRED UNLESS THE SOILS ARE PARTICULARLY INFERTILE.

**APPLICATION RATE:** 35 LBS/ACRE (1250 SQ. FT./LB.)

**SPECIES \*:** SWITCHGRASS (PANICUM VIRGATUM), VIRGINIA WILD RYE (ELYMUS VIRGINICUS), CREEPING RED FESCUE (FESTUCA RUBRA), FOX SEDGE (CAREX VULPINOIDEA), CREEPING BENTGRASS (AGROSTIS STOLONIFERA), SOFT RUSH (JUNCUS EFFUSUS), NEW ENGLAND ASTER (ASTER NOVAE-ANGLIAE), GRASS-LEAVED GOLDENROD (EUTHAMIA GRAMINIFOLIA), GREEN BULRUSH (SCIRPUS ATROVIRENS), BONESET (EUPATORIUM PERFOLIATUM), BLUE VERVAIN (VERBENA HASTATA) UPLAND BENTGRASS (AGROSTIS PERENNANS), BIG BLUESTEM, NIAGRA (ANDROPOGON GERARDII), SENSITIVE FERN (ONOCLEA SENSIBILIS), LITTLE BLUESTEM (SCHIZACHYRIUM SCOPARIUM), WOOLGRASS (SCIRPUS CYPERINUS).

### SEED MIX FOR PERIMETER SLOPES

THE NEW ENGLAND NATIVE WARM SEASON GRASS MIX CONTAINS A BROAD SPECTRUM OF NATIVE WARM SEASON GRASSES TO ENSURE THAT A VARIETY OF THE SPECIES WILL SURVIVE IN THE SANDY AND DROUGHTY CONDITIONS TYPICALLY FOUND ALONG ROADSIDES, GRAVEL MINE RECLAMATION AREAS, AND OTHER LOW-FERTILITY, WELL-DRAINED SOIL CONDITIONS. THIS MIX IS SOMEWHAT SLOW TO GERMINATE AND ESTABLISH DURING THE FIRST YEAR OF PLANTING, BUT IT WILL PRODUCE GOOD COVER BY THE END OF THE SECOND GROWING SEASON AND ESTABLISH LONG-LIVING NATIVE STANDS. COOL SEASON RYE GRASS AND FESCUE HAVE BEEN ADDED AS A "STARTER" SEED FOR EROSION CONTROL. THIS MIX HAS EXCELLENT HEAT AND DROUGHT TOLERANCE, AND GROWS WELL IN WELL-DRAINED SOILS. WARM SEASON GRASSES PROVIDE EXCELLENT YEAR-ROUND COVER AND FOOD FOR WILDLIFE, PARTICULARLY AS WINTER COVER FOR SMALL ANIMALS.

**SEEDING:** THIS MIX MAY BE APPLIED BY HYDRO SEEDING ON SLOPES, BY MECHANICAL SPREADER, OR ON SMALL SITES IT MAY BE SPREAD BY HAND. IN NEW ENGLAND, THE BEST RESULTS ARE OBTAINED WITH A MID-LATE SPRING SEEDING. APPLICATION RATE: 23 LBS/ACRE (1900 SQ. FT./LB)

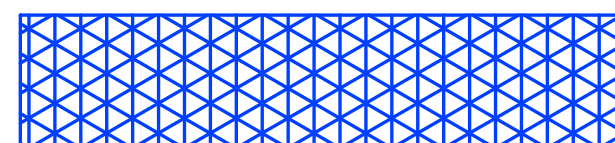
### NOTES:

1. INSTALL FOREBAY #1, WATER QUALITY BASIN #1, AND WATER QUALITY BASIN #2, AS SHOWN PRIOR TO THE START OF CONSTRUCTION..
2. ONCE THE SITE IS STABILIZED, REMOVE ALL SEDIMENT FROM FOREBAYS & WATER QUALITY BASINS.
3. REMOVE AN ADDITION 12" OF MATERIAL, BELOW ELEVATION OF 36 AND INSTALL 12" OF TOPSOIL.

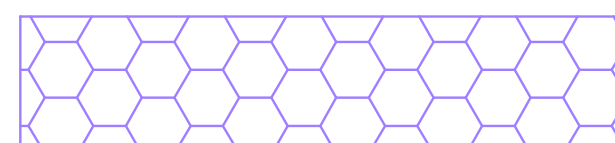
THE FOLLOWING SEEDING MIXTURES SHALL BE PROVIDED ON ALL DISTURBED AREAS.

KENTUCKY BLUE GRASS	20 LB's/AC
CREEPING RED FESCUE	20 LB's/AC
PERENNIAL RYEGRASS	5 LB's/AC

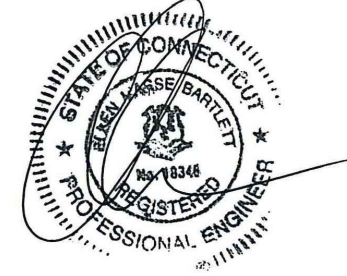
NOTE: SITE GRADING SEEDING TO BE USED IN ALL DISTURBED AREAS



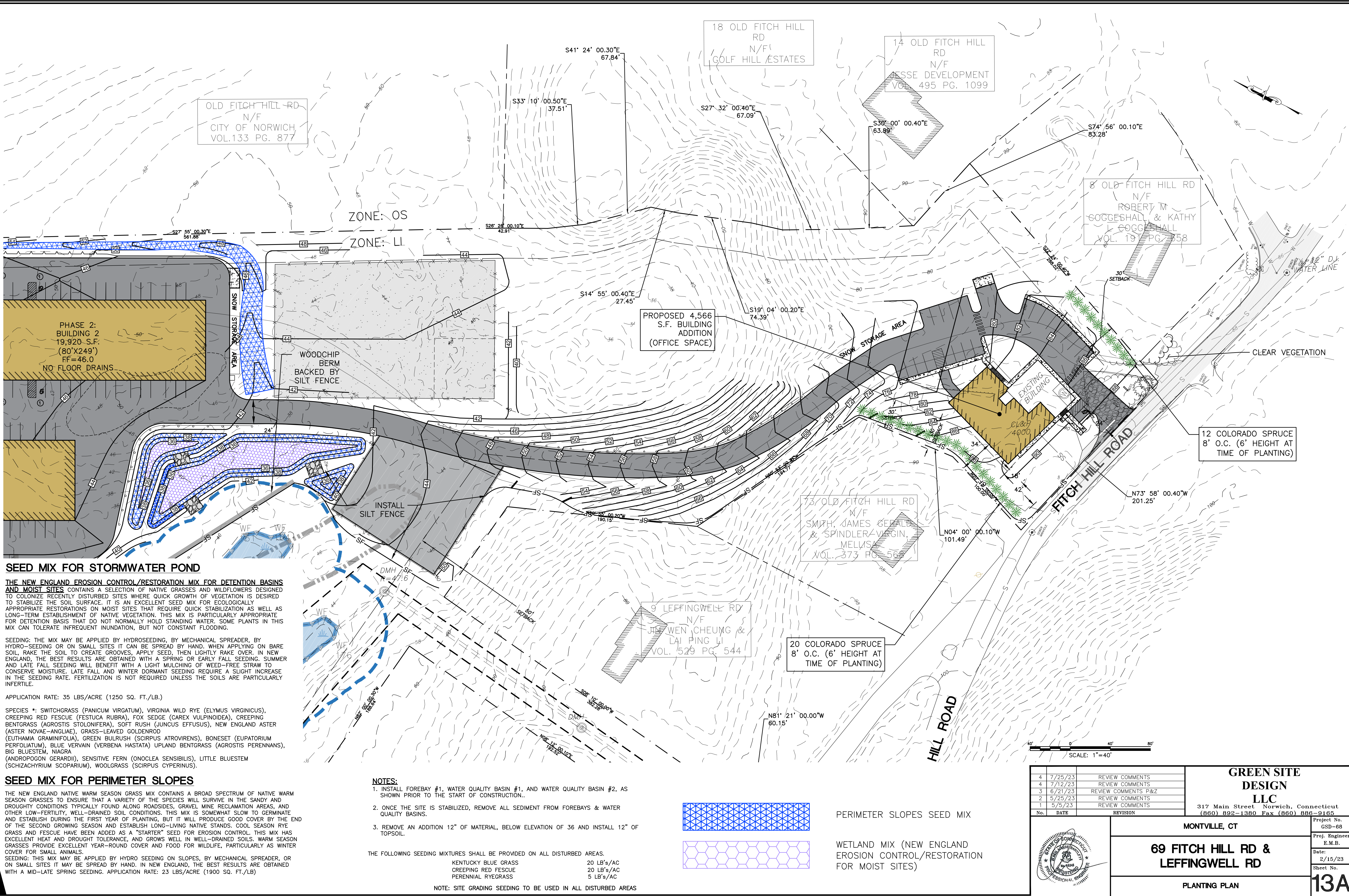
PERIMETER SLOPES SEED MIX



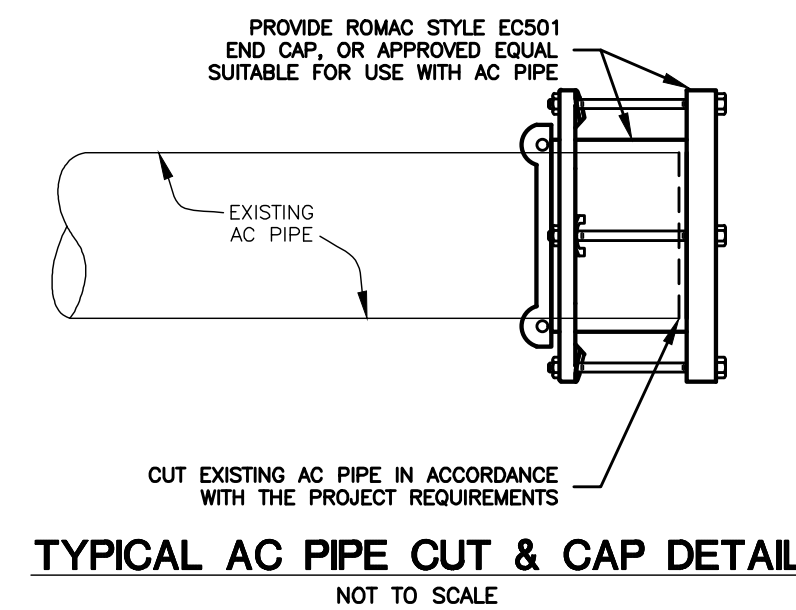
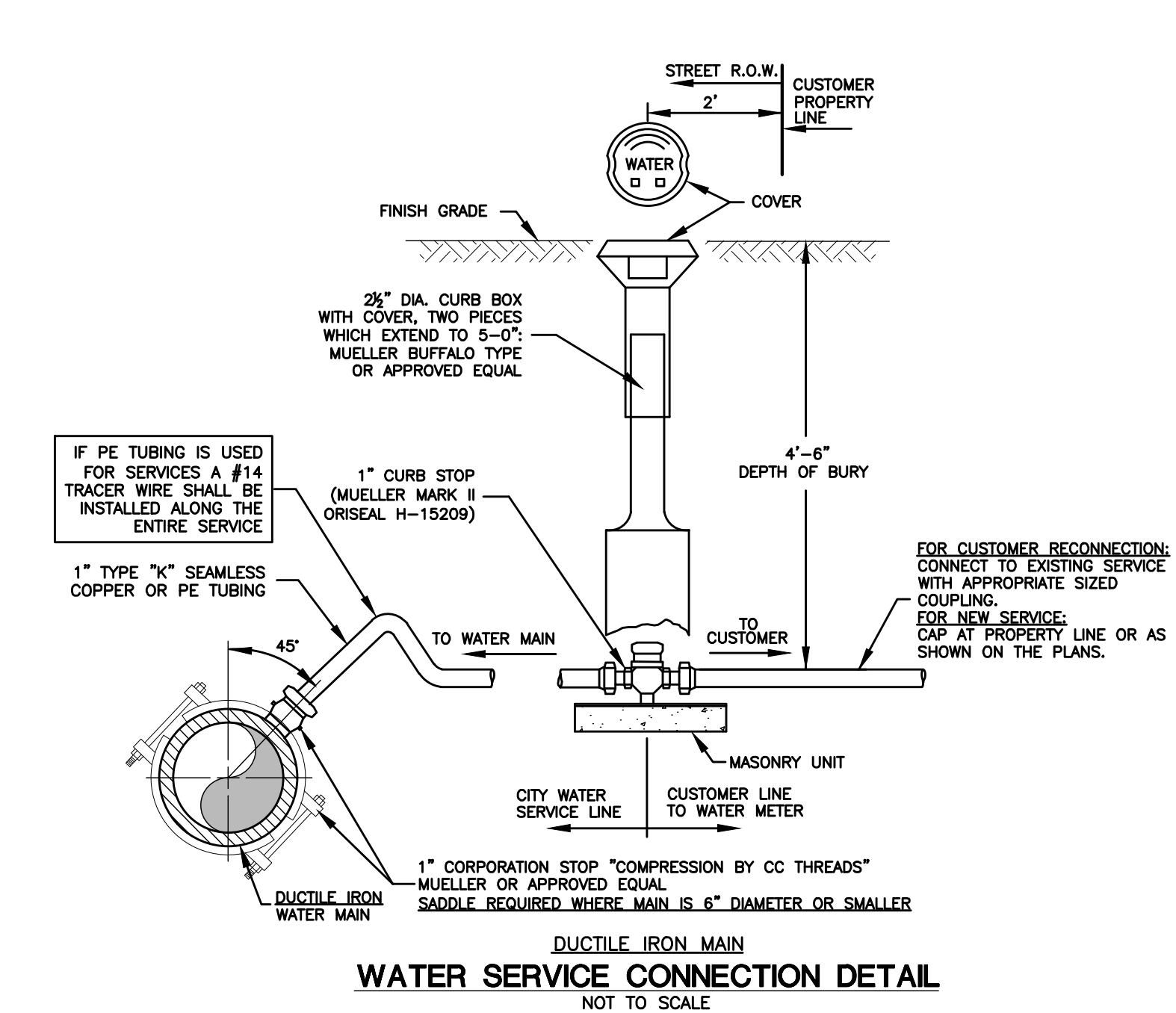
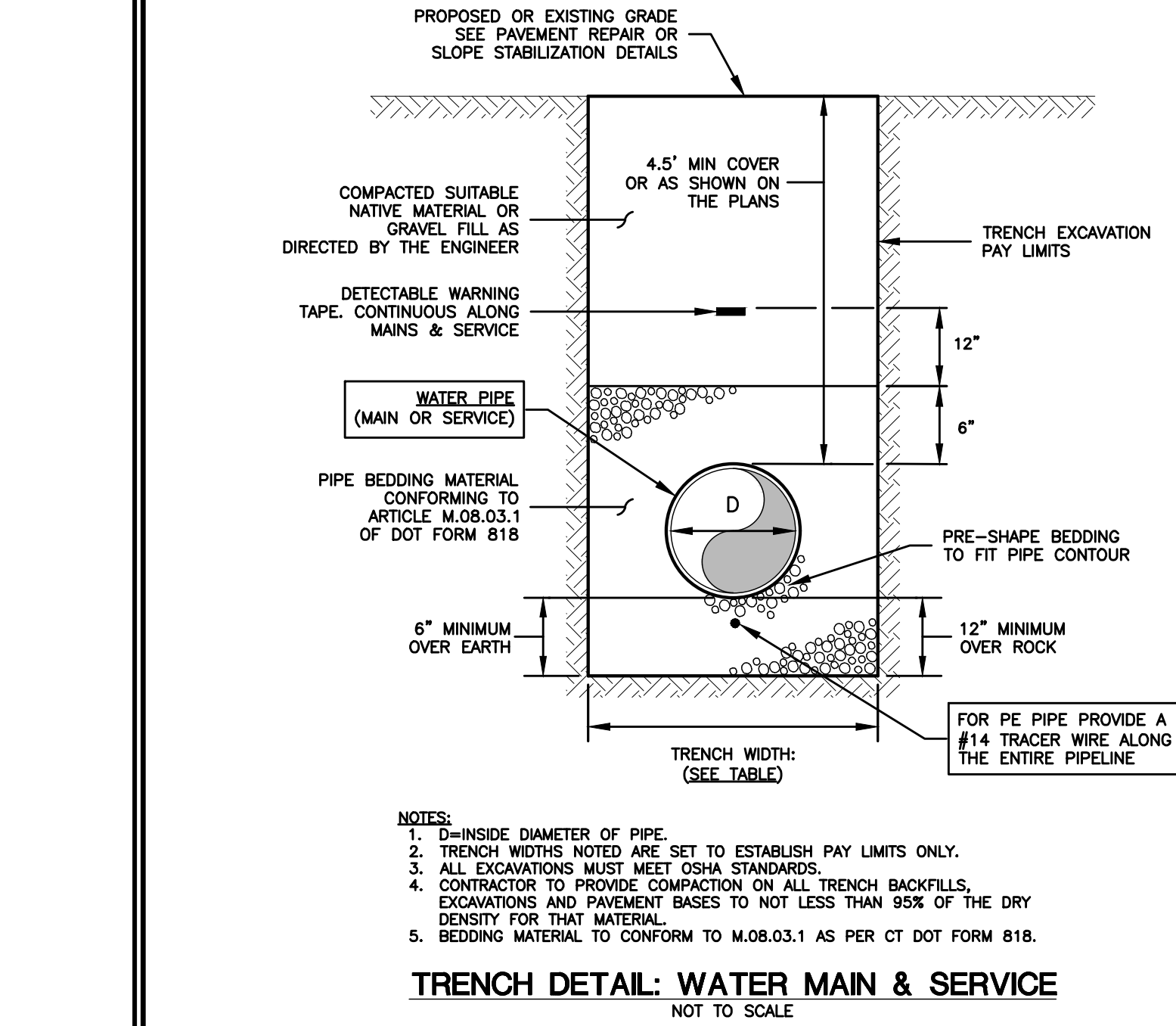
WETLAND MIX (NEW ENGLAND EROSION CONTROL/RESTORATION FOR MOIST SITES)

1		7/12/23		REVIEW COMMENTS	
No.	DATE	REVISION			
					
<b>GREEN SITE DESIGN LLC</b>				317 Main Street Norwich, Connecticut (860) 892-1380 Fax (860) 886-9165	
MONTVILLE, CT				Project No. GSD-68	
<b>69 FITCH HILL RD &amp; LEFFINGWELL RD</b>				Proj. Engineer E.M.B.	
PLANTING PLAN				Date: 2/15/23	
				Sheet No. <b>13</b>	





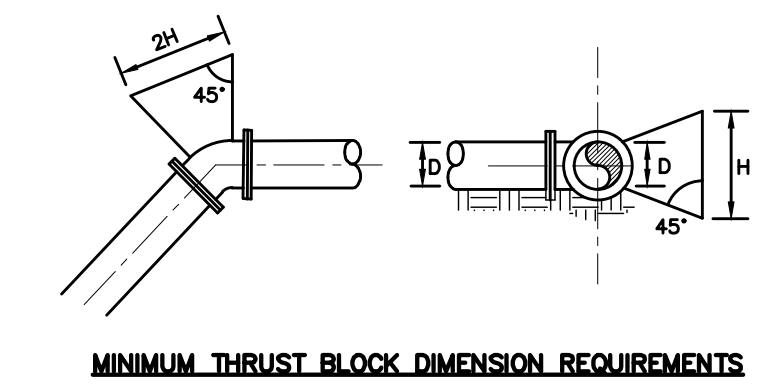




SQUARE FEET OF CONCRETE THRUST BLOCKING ON UNDISTURBED MATERIAL								
AREAS SHOWN ARE BASED ON 200 PSI TEST PRESSURE (SEE NOTE BELOW)								
REACTION TYPE	4"	6"	8"	10"	12"	16"	18"	24"
90° BEND	1.8	4.4	7.8	11.2	17.2	30.8	36.0	69.2
TEE OR CAP	1.4	3.2	5.6	8.4	12.2	21.8	27.8	49.5
45° BEND	1.0	2.4	4.2	6.0	9.4	16.6	19.4	37.6
22½° BEND	0.6	1.2	2.2	3.0	4.8	8.6	10.0	19.2
11¼° BEND	0.2	0.6	1.0	1.6	2.4	4.2	5.0	9.6

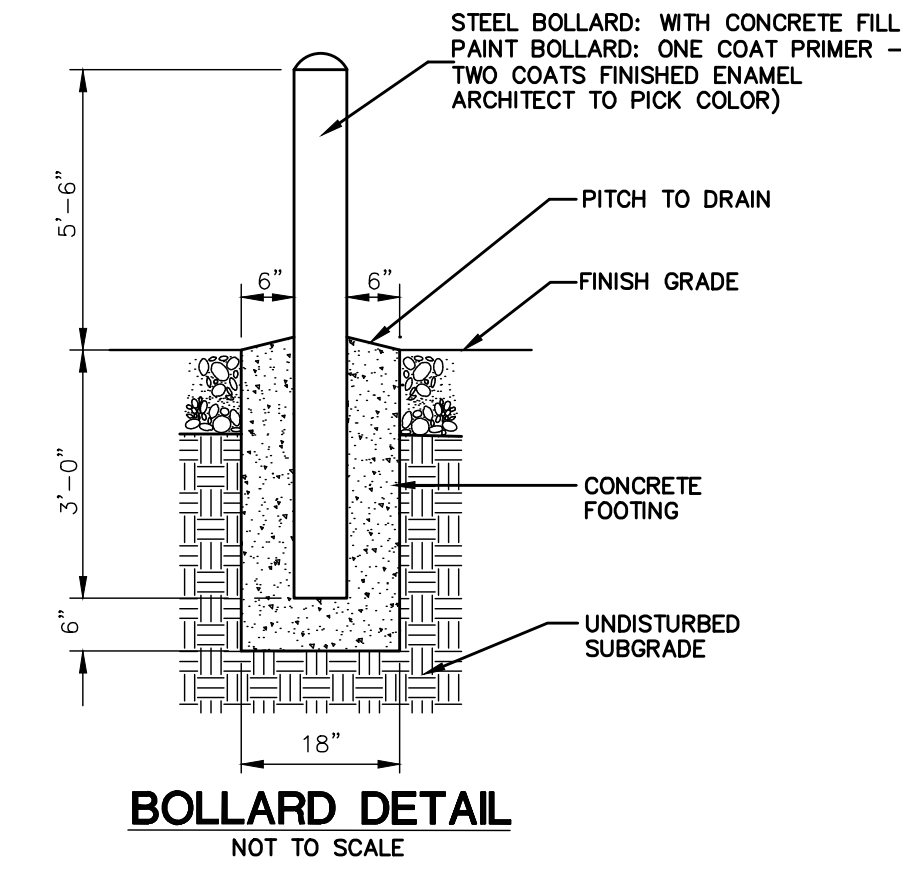
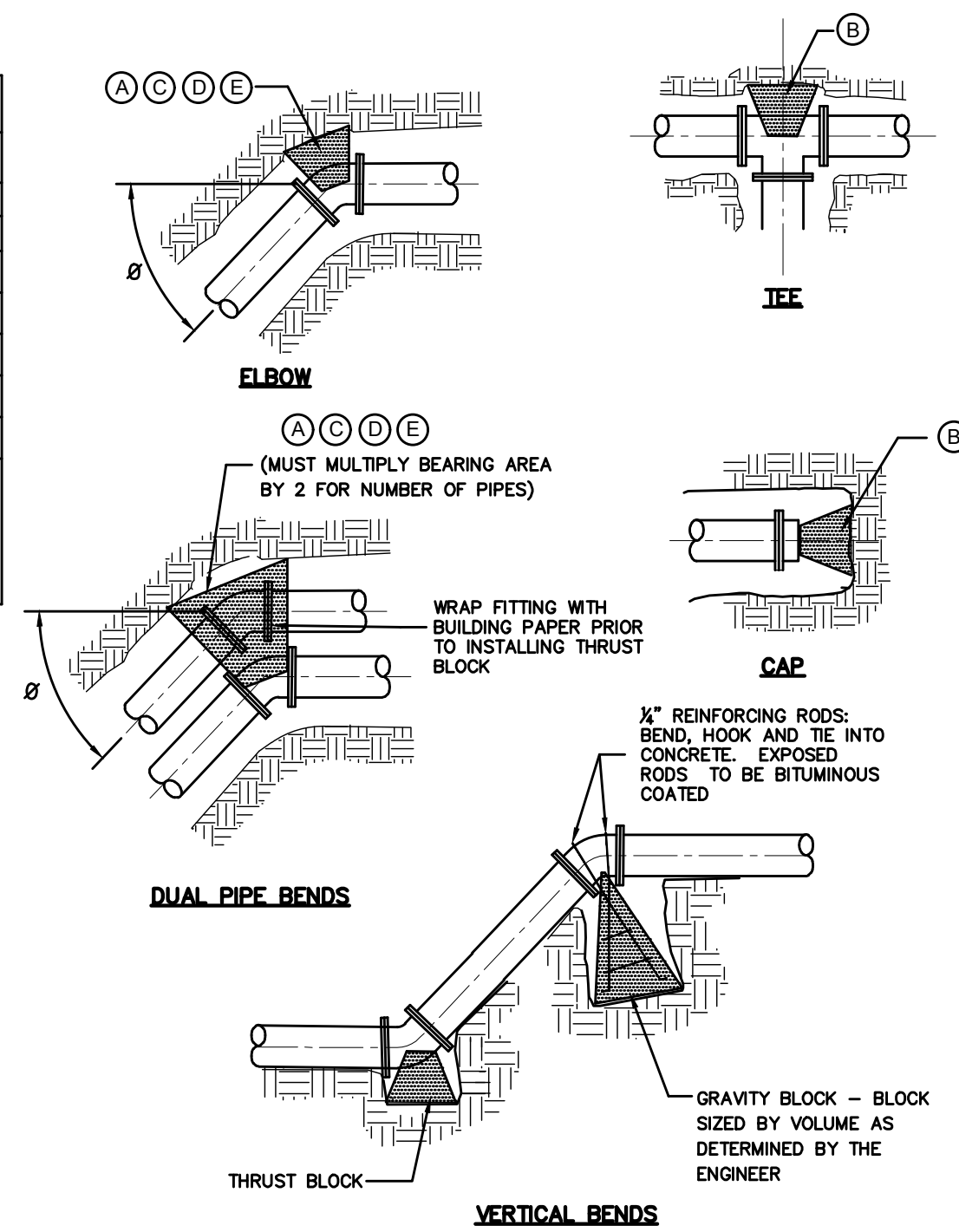
NOTES:

- POUR THRUST BLOCKS AGAINST UNDISTURBED MATERIAL. WHERE TRENCH WALL HAS BEEN DISTURBED, EXCAVATE LOOSE MATERIAL AND EXTEND THRUST BLOCK TO UNDISTURBED MATERIAL. NO JOINTS SHALL BE COVERED WITH CONCRETE.
- ON BENDS AND TEES, EXTEND THRUST BLOCKS FULL LENGTH OF FITTING. PLACE BOARD IN FRONT OF ALL CAPS BEFORE POURING THRUST BLOCK.
- REQUIREMENTS OF THE ABOVE TABLE PRESUME MINIMUM SOIL BEARING OF ONE TON PER SQUARE FOOT, AND MAY BE VARIED BY THE ENGINEER TO MEET OTHER CONDITIONS ENCOUNTERED.
- TEST PRESSURE FOR WATER MAINS SHALL BE 200 PSI.



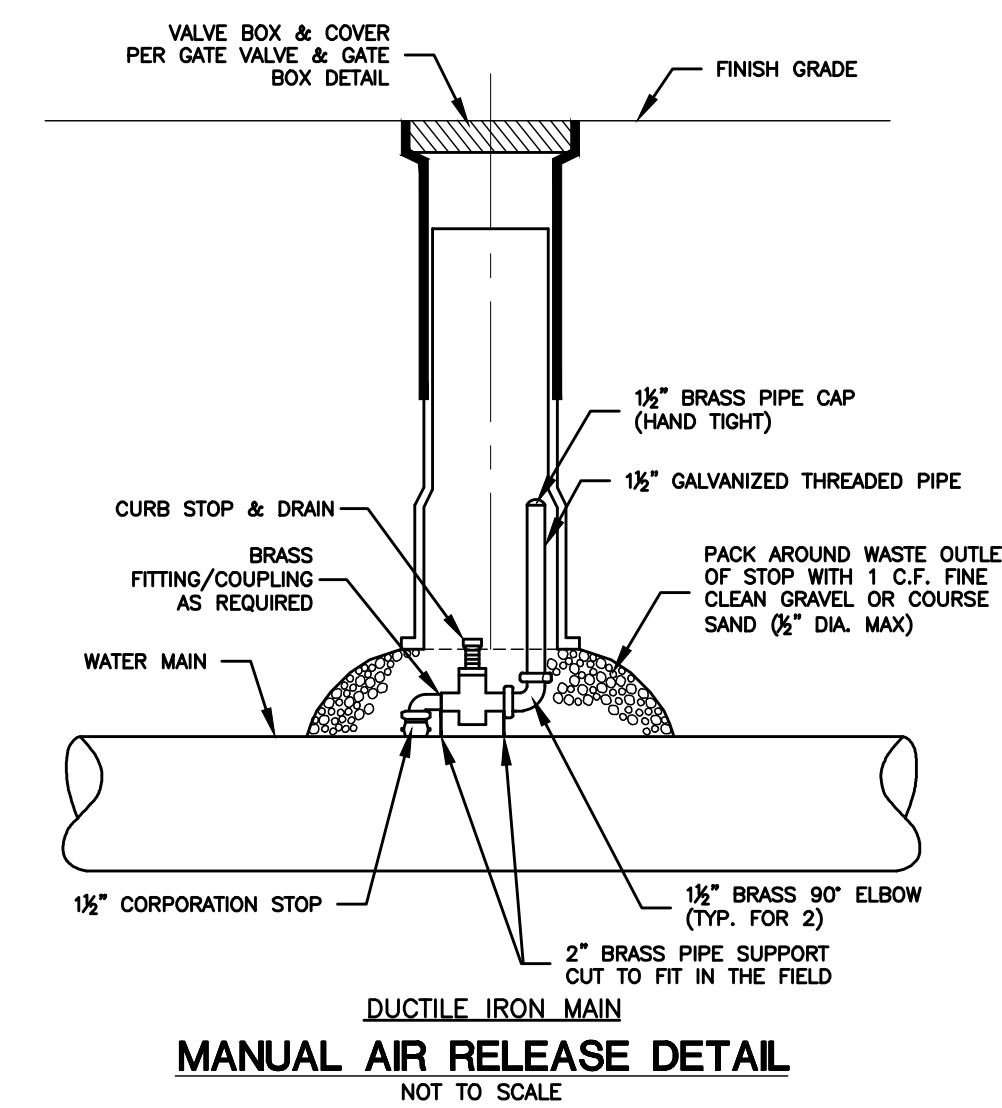
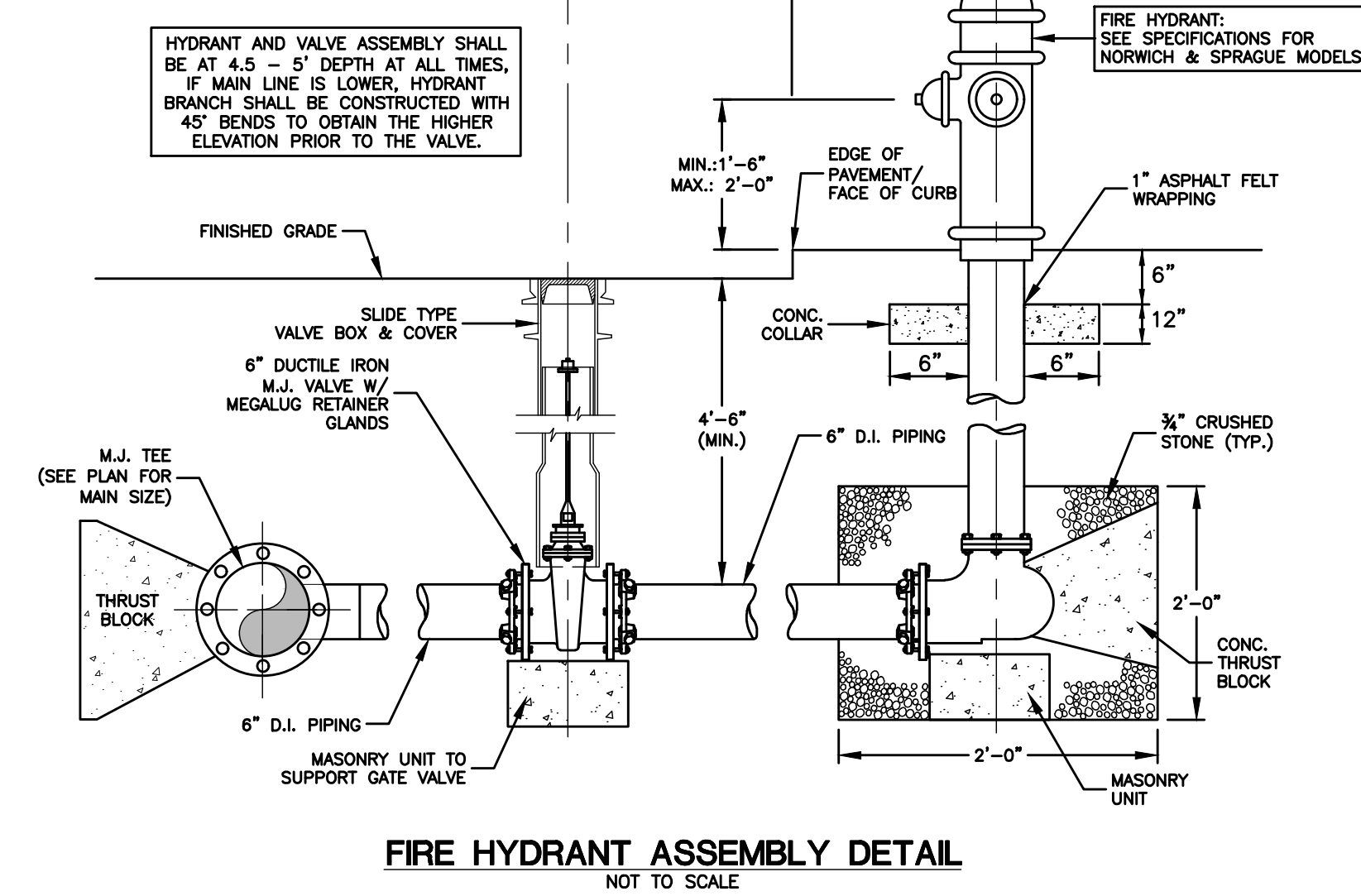
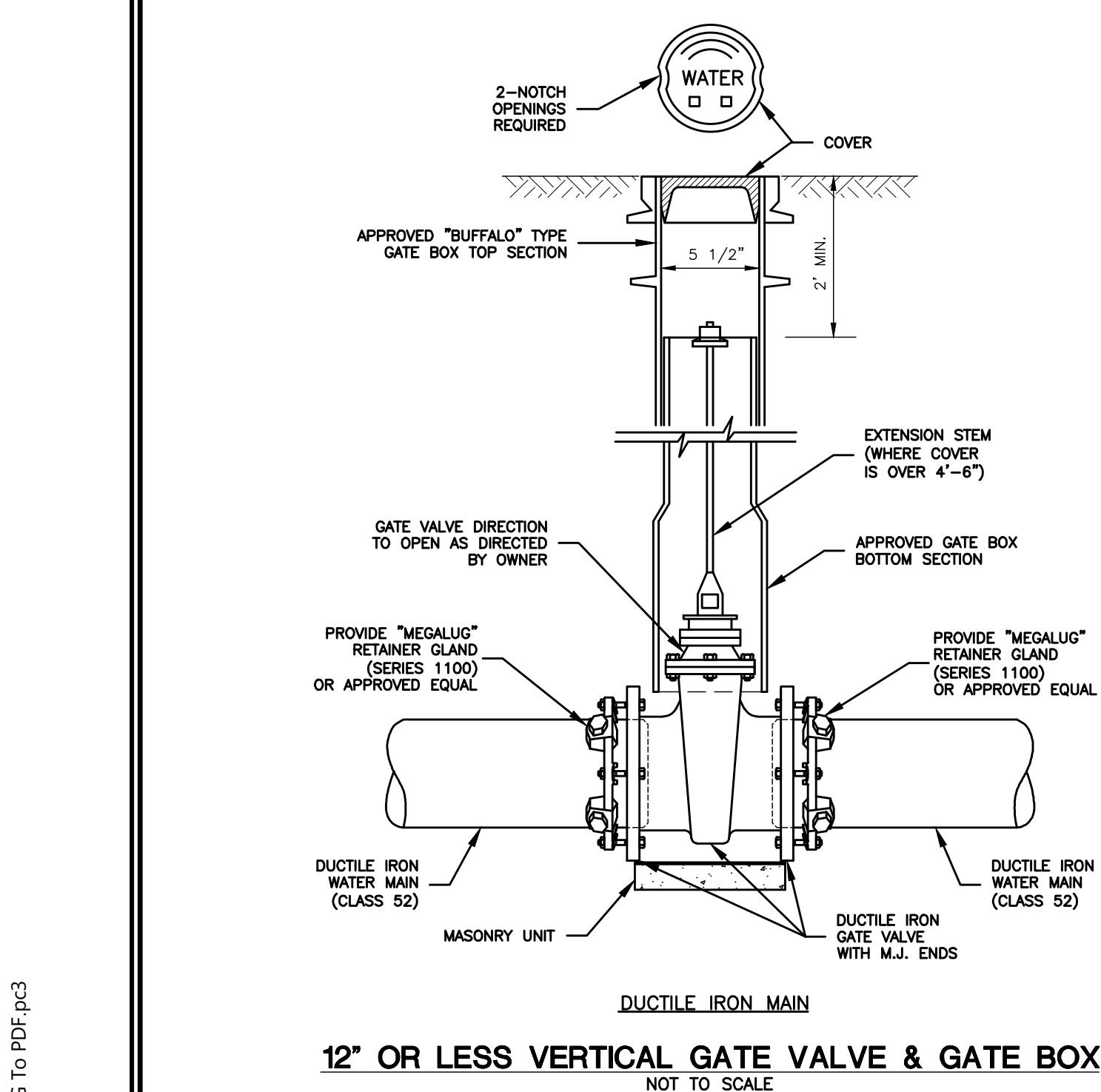
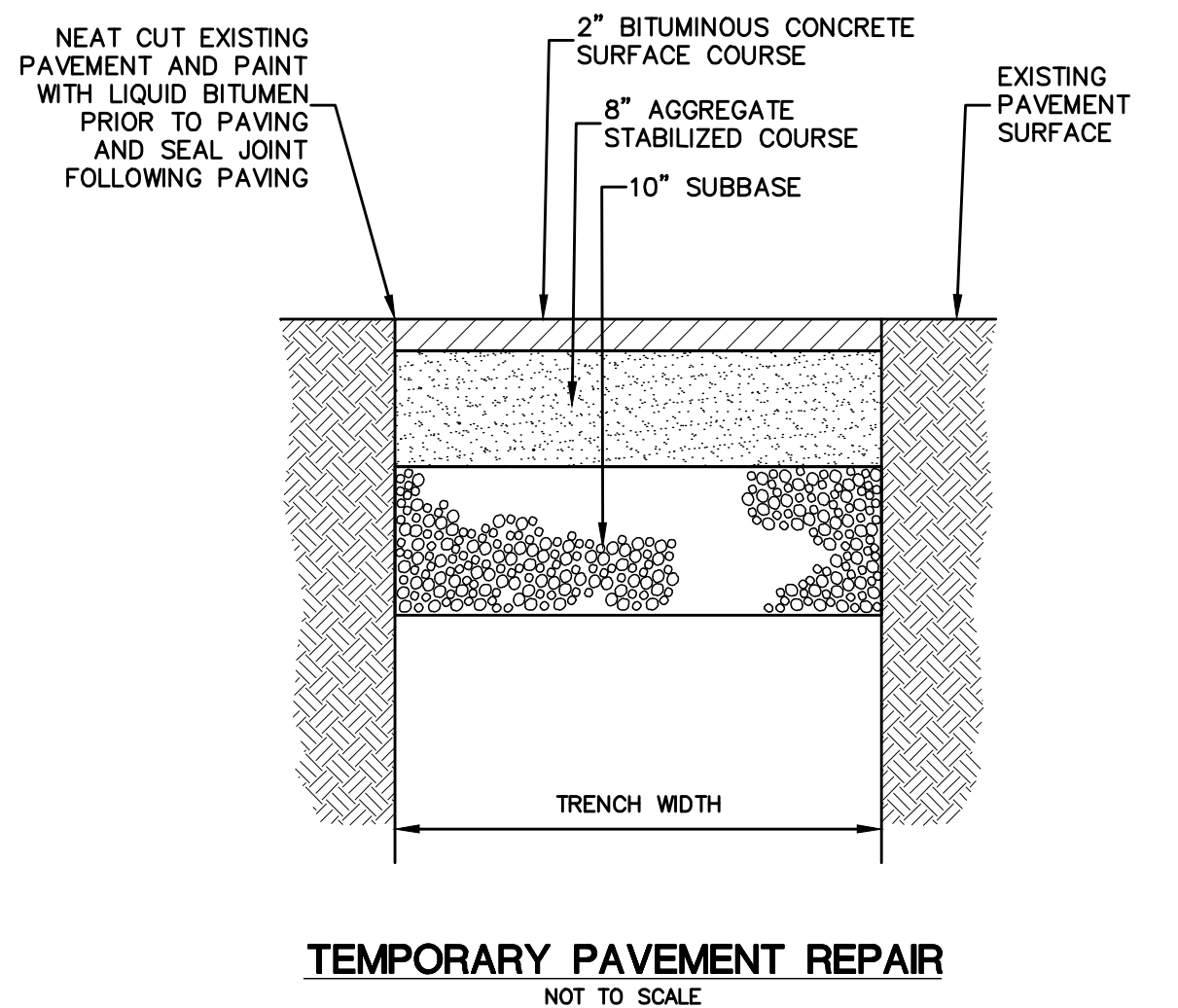
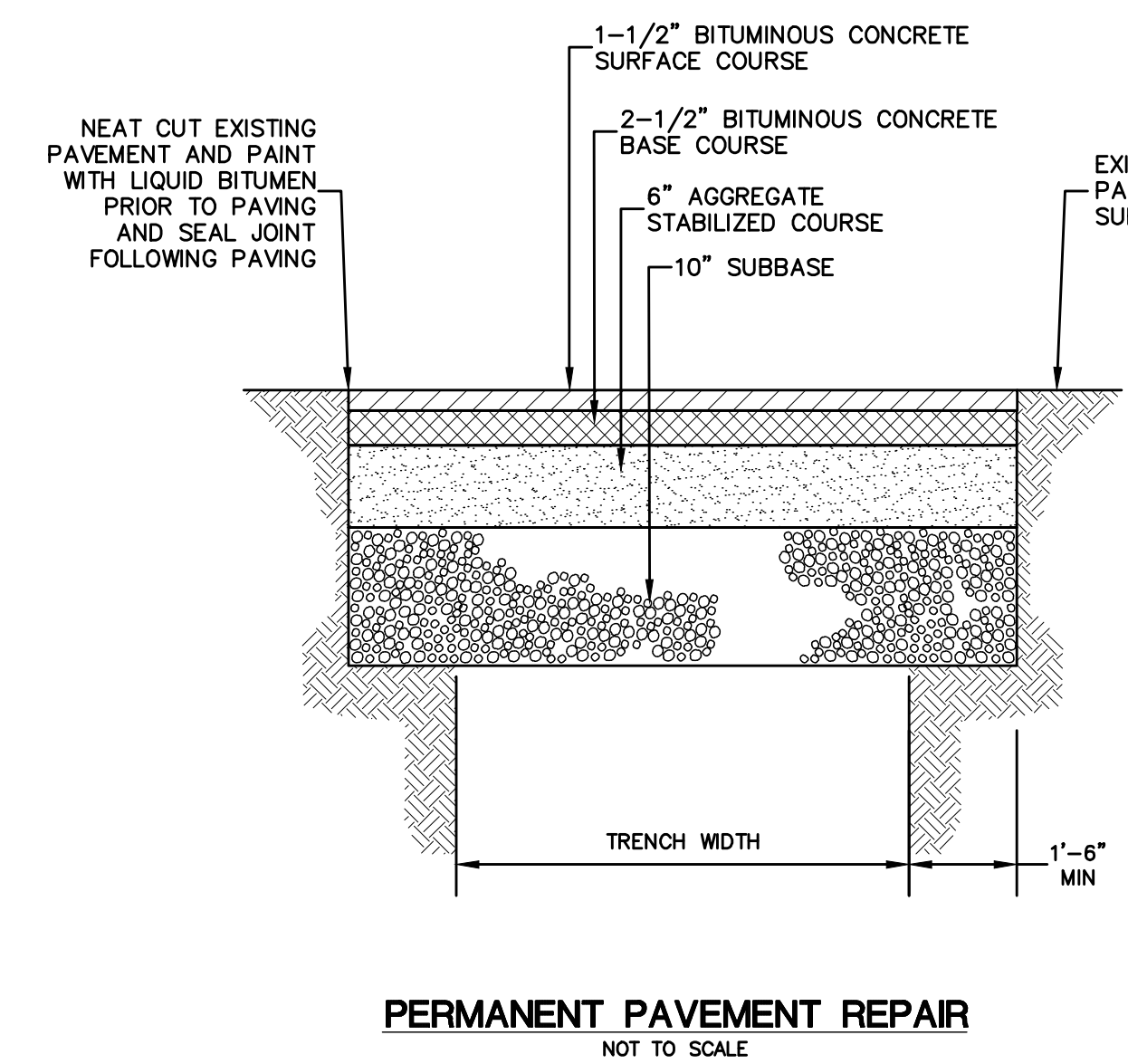
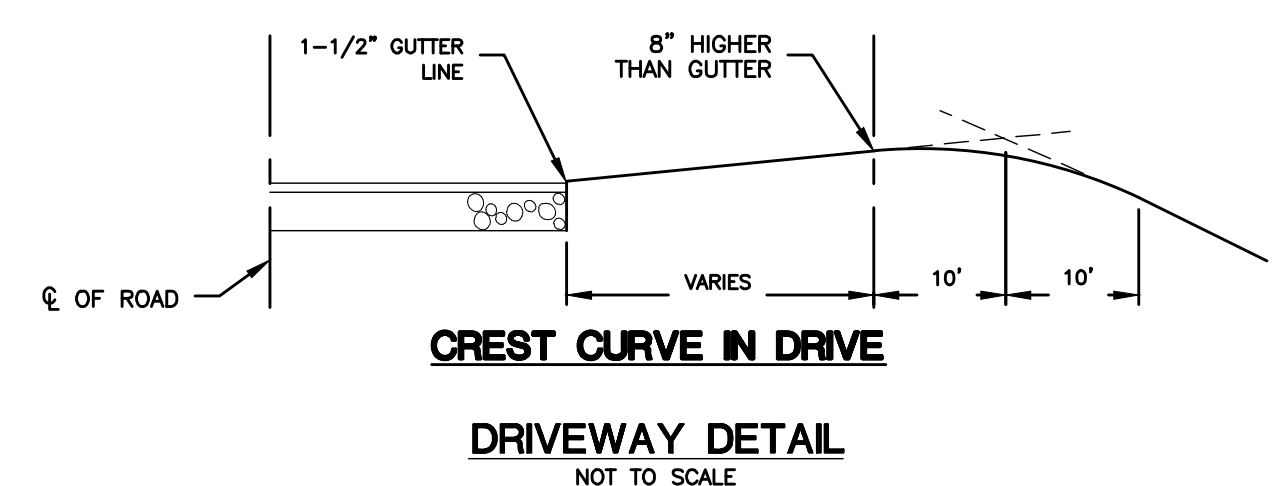
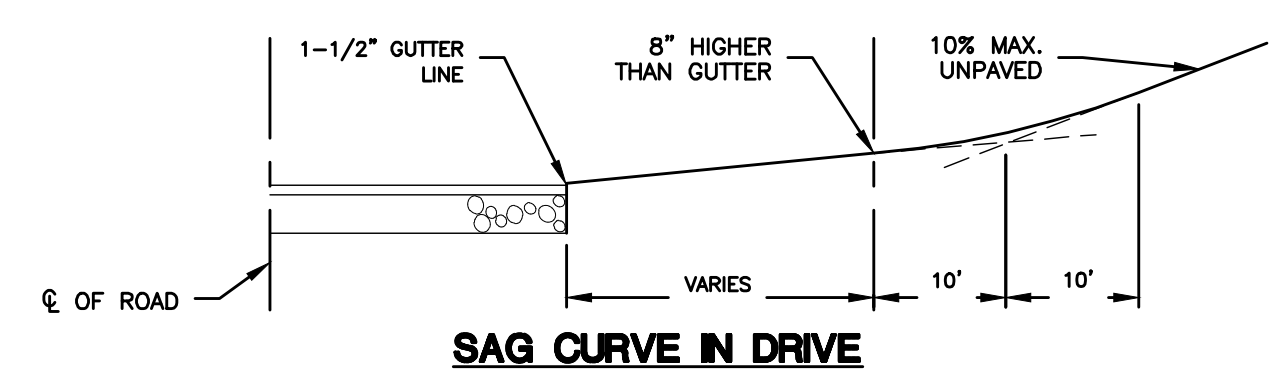
### THRUST BLOCK DETAILS & DIMENSIONS

NOT TO SCALE



NOTE:

THE CONTRACTOR SHALL MAINTAIN A MINIMUM 15' WIDE TRAVEL WAY AT ROAD CROSSINGS AT ALL TIMES DURING CONSTRUCTION.



GREEN SITE DESIGN LLC		317 Main Street Norwich, Connecticut (860) 892-1380 Fax (860) 886-9165	
MONTVILLE, CT		Project No. GSD-68	
69 FITCH HILL RD & LEFFINGWELL RD		Proj. Engineer E.M.B.	
WATER & ROAD DETAILS		Date: 2/15/23	
		Sheet No. 14	

REVISIONS:

No.	DATE	REVISION
1	6/22/23	REVIEW COMMENTS

Professional Engineer Seal: E.M.B., State of Connecticut, No. 10000, Exp. 12/31/24