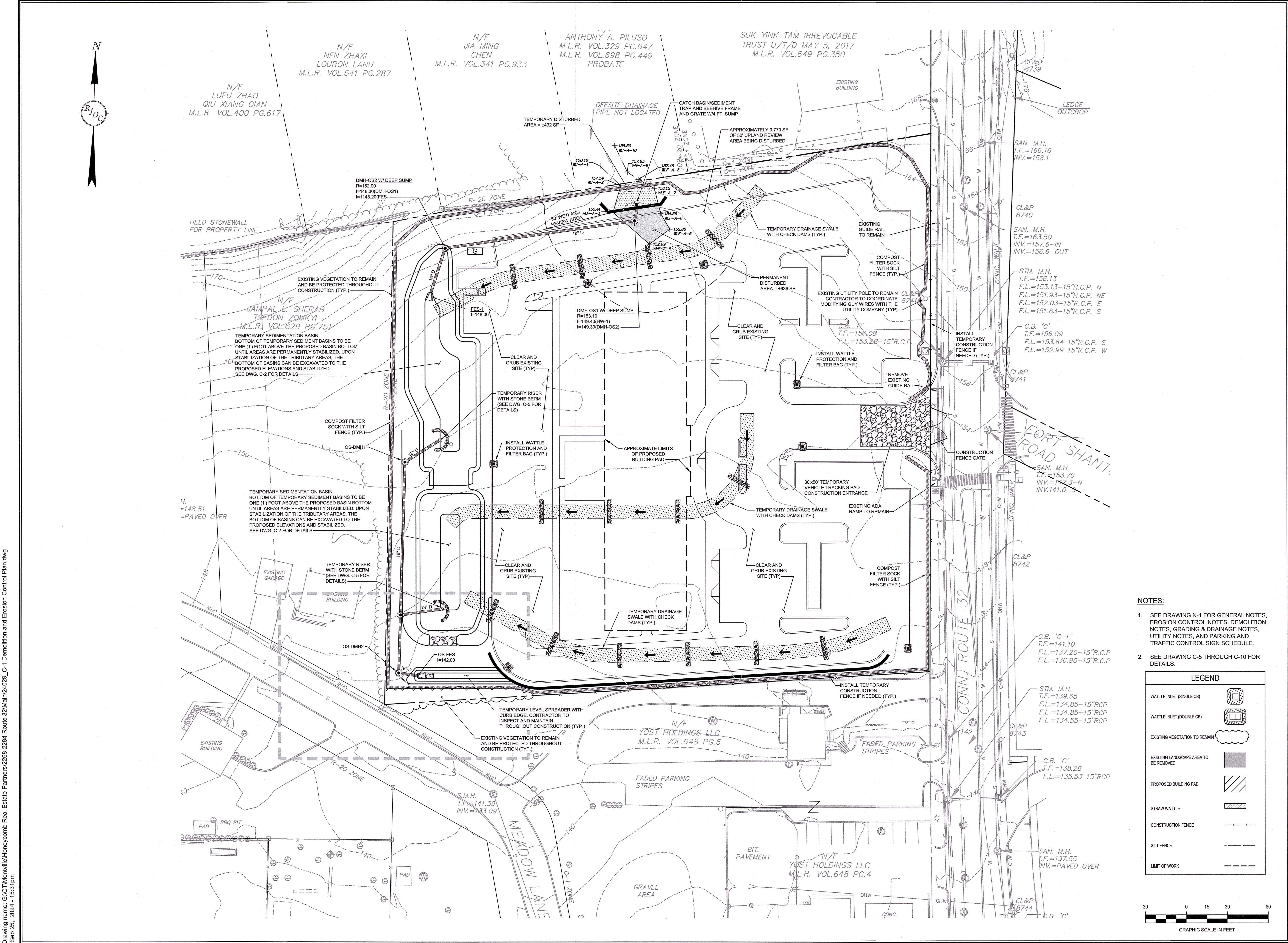


Drawing name: G:\CT\Montville\Honeycomb Real Estate Partners\2268-2284 Route 32\Main\24029\_C-1 Demolition and Erosion Control Plan.dwg  
Sep 25, 2024 - 15:31pm



# RJOC

NO.	REVISION	DATE
1.	SUBMITTED TO INLAND WETLANDS COMMISSION	09/25/2024

PREPARED BY:  
**RJO'CONNELL & ASSOCIATES, INC.**  
CIVIL ENGINEERS, SURVEYORS & LAND PLANNERS  
80 MONTVALE AVENUE, SUITE 201 STONEHAM, MA 02180  
PHONE: 781.279.0180 RJOC@CONNELL.COM

PREPARED FOR:  
**HONEYCOMB REAL ESTATE PARTNERS**  
20 AVON MEADOW LANE  
AVON, CT 06001

PROJECT NAME:  
**HORIZON VIEW**  
MONTVILLE, CT

DESIGNED BY: RWS  
DRAWN BY: WJH  
REVIEWED BY: BPD/RWS  
SCALE: 1" = 30'  
DATE: 09/25/2024  
DRAWING NAME:  
**DEMOLITION AND EROSION CONTROL PLAN**  
DRAWING NUMBER:  
**C-1**  
PROJECT NUMBER:  
24029

SEAL:

NOTES:  
1. SEE DRAWING N-1 FOR GENERAL NOTES, EROSION CONTROL NOTES, DEMOLITION NOTES, GRADING & DRAINAGE NOTES, UTILITY NOTES, AND PARKING AND TRAFFIC CONTROL SIGN SCHEDULE.  
2. SEE DRAWING C-5 THROUGH C-10 FOR DETAILS.

**LEGEND**

- WATTLE INLET (SINGLE CB)
- WATTLE INLET (DOUBLE CB)
- EXISTING VEGETATION TO REMAIN
- EXISTING LANDSCAPE AREA TO BE REMOVED
- PROPOSED BUILDING PAD
- STRAW WATTLE
- CONSTRUCTION FENCE
- SILT FENCE
- LIMIT OF WORK

GRAPHIC SCALE IN FEET  
30 0 15 30 60



