

#### GENERAL POWER NOTES

- ALL WORK SHALL CONFORM WITH THE ELECTRICAL SPECIFICATIONS AND LATEST ACCEPTED NATIONAL ELECTRICAL CODE (NEC).
- ALL ELECTRICAL EQUIPMENT INCLUDED BUT NOT LIMITED TO ELECTRICAL PANELS, DISCONNECTS, STARTERS AND VFD TO BE INSTALLED INSIDE SHALL BE MOUNTED ON 3/4" FIRE RATED PLYWOOD BACKBOARD TO BE PROVIDED BY ELECTRICAL CONTRACTOR.
- PROVIDE UNISTRUT AS REQUIRED TO INSTALL DISCONNECT, VFD OR STARTER NEAR EQUIPMENT AND ACCESSIBLE.
- FINAL LOCATION OF POWER SHALL BE COORDINATED WITH FURNITURE AND EQUIPMENT.
- DEVICES TO BE INSTALLED ABOVE COUNTER SHALL BE MOUNTED 6" FROM COUNTER SURFACE (WHEN THERE IS NO BACK SPLASH) OR 6" FROM BACK SPLASH.
- ALL ELECTRICAL EQUIPMENT INCLUDED BUT NOT LIMITED TO ELECTRICAL PANELS, DISCONNECT, STARTERS, AND VFD SHALL BE MOUNTED ON 3/4" FIRE RATED PLYWOOD BACKBOARD TO BE PROVIDED BY ELECTRICAL CONTRACTOR.
- PROVIDE UNISTRUT AS REQUIRED TO INSTALL DISCONNECT MEANS NEAR EQUIPMENT AND ACCESSIBLE.
- REFER TO ONE-LINE RISER DIAGRAM ON SHEET E600 FOR ADDITIONAL INFORMATION ON ELECTRICAL EQUIPMENT AND DISTRIBUTION.

## 1 ELECTRICAL MAIN LEVEL POWER PLAN

1/4" = 1'-0"

Project Title:  
NEW ANIMAL FACILITY AT:  
MONTVILLE ANIMAL SHELTER  
225 Maple Ave. Parcel ID: 077-041-000  
Montville, CT



SILVER PETRUCCELLI + ASSOCIATES

3190 WHITNEY AVENUE HAMDEN CT 06518  
311 STATE STREET NEW LONDON CT 06320  
203 230 9007 silverpetrucci.com

Revision:	Description:	Date:	Revised By:
	ISSUED FOR BID	09/27/2024	

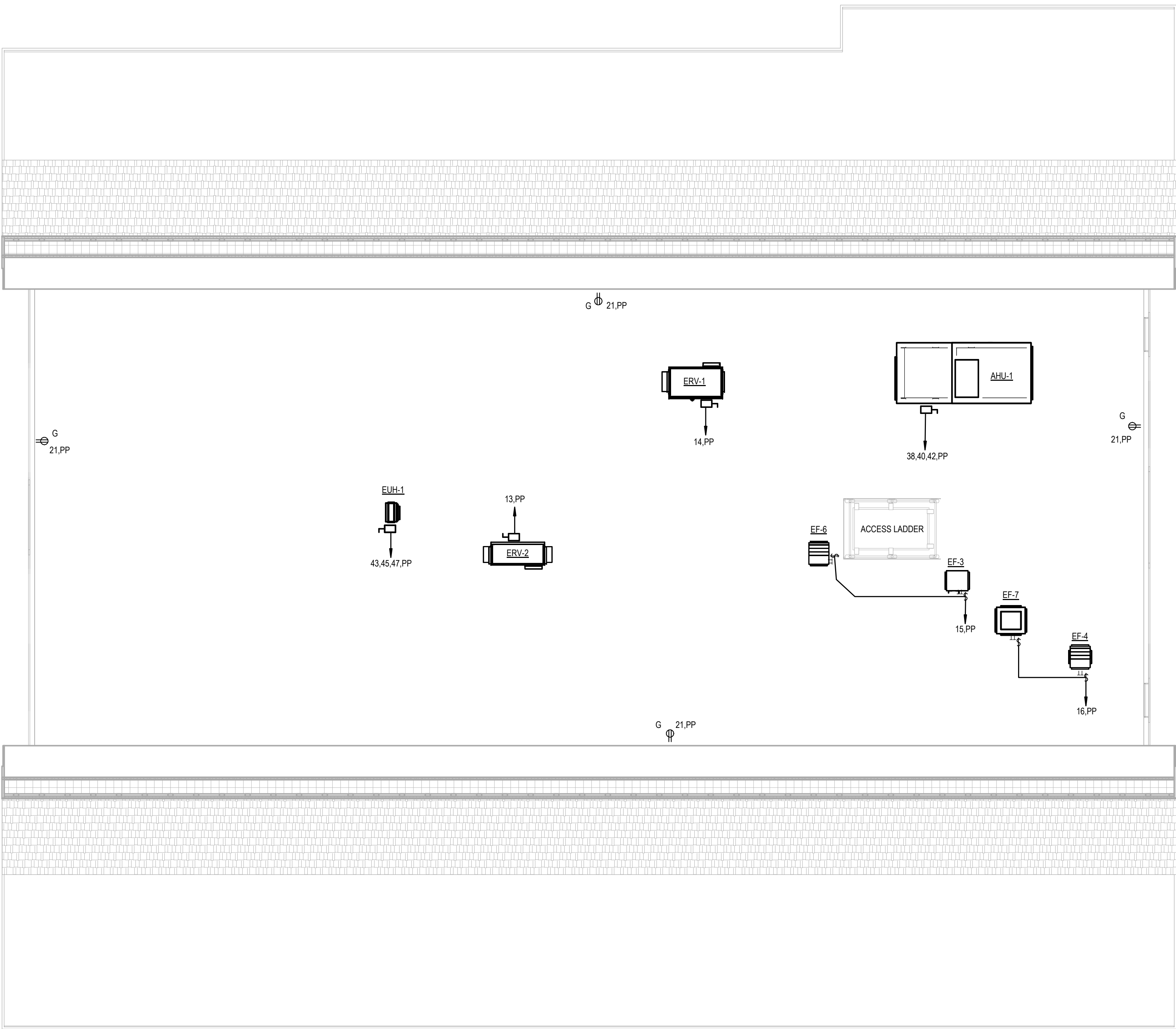
Drawing Title:  
ELECTRICAL MAIN LEVEL POWER  
PLAN

Date:  
09/27/2024  
Scale:  
AS NOTED  
Drawn By:  
JRP  
Project Number:  
22.130

Drawing Number:

E200

10/4/2024 10:50:46 AM



- | GENERAL POWER NOTES |   |
|---------------------|---|
| ●                   | ALL WORK SHALL CONFORM WITH THE ELECTRICAL SPECIFICATIONS AND LATEST ACCEPTED NATIONAL ELECTRICAL CODE (NEC).   |
| ●                   | ALL ELECTRICAL EQUIPMENT INCLUDED BUT NOT LIMITED TO ELECTRICAL PANELS, DISCONNECTS, STARTERS AND VFD TO BE INSTALLED INSIDE SHALL BE MOUNTED ON 3/4" FIRE RATED PLYWOOD BACKBOARD TO BE PROVIDED BY ELECTRICAL CONTRACTOR. |
| ●                   | PROVIDE UNISTRUT AS REQUIRED TO INSTALL DISCONNECT, VFD OR STARTER NEAR EQUIPMENT AND ACCESSIBLE.   |
| ●                   | FINAL LOCATION OF POWER SHALL BE COORDINATED WITH EQUIPMENT.  |
| ●                   | PROVIDE UNISTRUT AS REQUIRED TO INSTALL DISCONNECT MEANS NEAR EQUIPMENT AND ACCESSIBLE.   |
| ●                   | REFER TO ONE-LINE RISER DIAGRAM ON SHEET E000 FOR ADDITIONAL INFORMATION ON ELECTRICAL EQUIPMENT AND DISTRIBUTION.  |

**1** ELECTRICAL ATTIC POWER PLAN  
1/4" = 1'-0"



Revision:	Description:	Date:	Revised By:
	ISSUED FOR BID	09/27/2024	

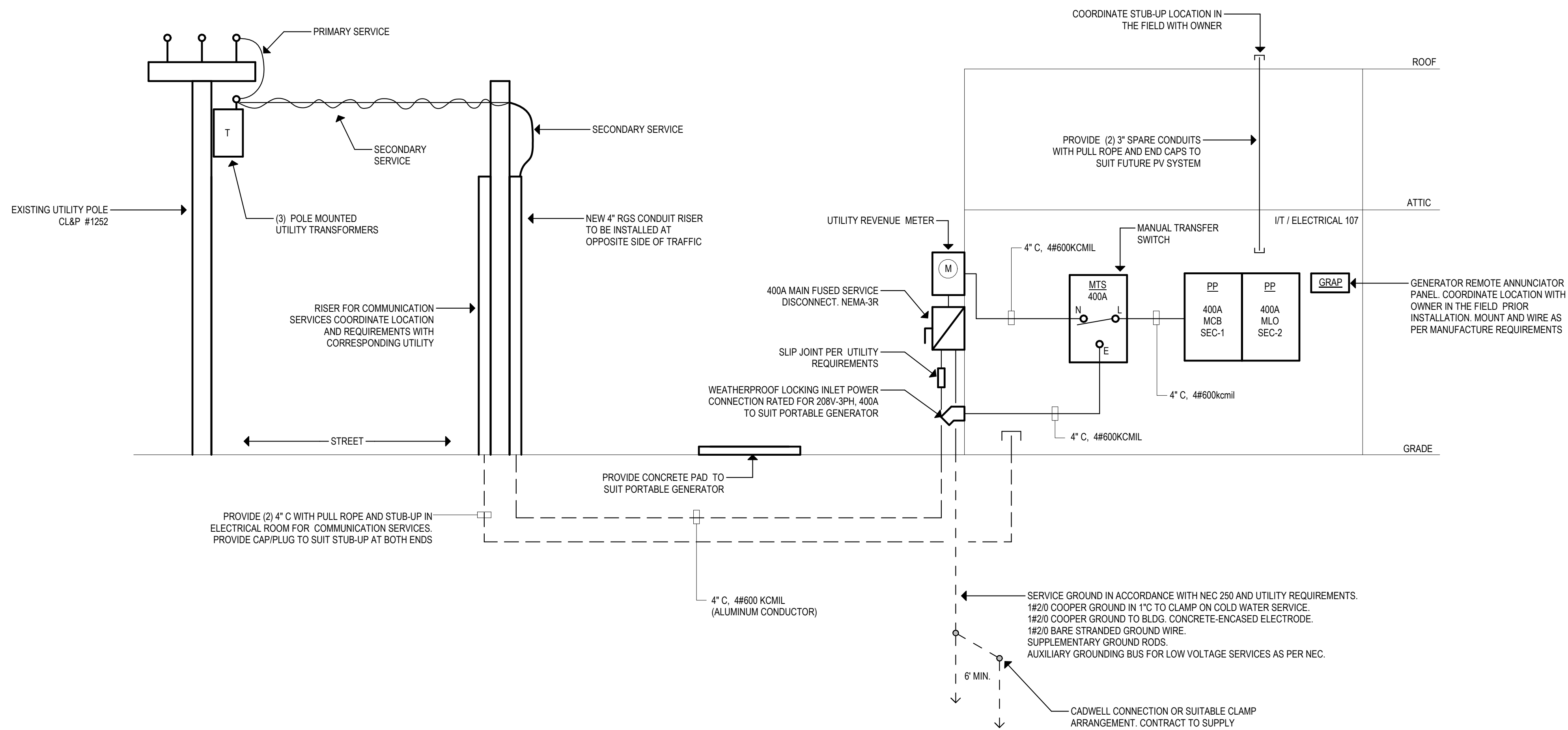
Branch Panel: PP															
Location: MECH 106					Volts: 120/208 Wye					A.I.C. Rating: 42,000					
Supply From:					Phases: 3					Mains Type: MLO					
Mounting: Surface					Wires: 4					Mains Rating: 400 A					
Enclosure: Type 1										MCB Rating: 0 A					
Notes:															
1. UPDATE WIRE SIZE AS REQUIRED TO MAINTAIN 3% MAXIMUM VOLTAGE DROP															
2. PANELBOARD SHALL BE CUTTLE HAMMER PPOWER-R-LINE OR EQUAL WITH MAIN LUGS.															
CKT	Circuit Description	Wire & Conduit	Trip	Poles	A		B		C		Poles	Trip	Wire & Conduit	Circuit Description	CKT
1	Power Receptacles	3/4"C, 2#12, 1#12G	20 A	1	180	336					1	20 A	3/4"C, 2#12, 1#12G	Lighting	2
3	EF-1, EF-2 & EF-5	3/4"C, 2#12, 1#12G	20 A	1			300	606			1	20 A	3/4"C, 2#12, 1#12G	Lighting	4
5	Electric Water Cooler	3/4"C, 2#12, 1#12G	20 A	1					300	350	1	20 A	3/4"C, 2#12, 1#12G	Lighting - Exterior	6
7	Lighting	3/4"C, 2#12, 1#12G	20 A	1	680	1260					1	20 A	3/4"C, 2#12, 1#12G	Power Receptacles	8
9	Power Receptacles	3/4"C, 2#12, 1#12G	20 A	1			900	900			1	20 A	3/4"C, 2#12, 1#12G	Power Receptacles	10
11	Lighting	3/4"C, 2#12, 1#12G	20 A	1					860	1500	1	20 A	3/4"C, 2#12, 1#12G	Electric Wall Heater	12
13	ERV-2	3/4"C, 2#12, 1#12G	20 A	1	1464	1800					1	25 A	3/4"C, 2#10, 1#10G	ERV-1	14
15	EF-3 & EF-6	3/4"C, 2#12, 1#12G	20 A	1			1000	1000			1	20 A	3/4"C, 2#12, 1#12G	EF-4 & EF-7	16
17	Heat Trace Control	3/4"C, 3#12, 1#12G	20 A	2					1664	720	1	20 A	3/4"C, 2#12, 1#12G	Power Receptacles	18
19	--	--	--	--	1664	720					1	20 A	3/4"C, 2#12, 1#12G	Power Receptacles	20
21	Power Receptacles	3/4"C, 2#12, 1#12G	20 A	1			720	200			2	20 A	3/4"C, 2#12, 1#12G	Fan Coil Units	22
23	Spare		20 A	1					0	200	--	--	--	--	24
25	Spare		20 A	1	0	1080					1	20 A	3/4"C, 2#12, 1#12G	Power Receptacles	26
27	Dryer Machine	1"C, 3#8, 1#10G	40 A	2			2500	1080			1	20 A	3/4"C, 2#12, 1#12G	Power Receptacles	28
29	--	--	--	--					2500	1080	1	20 A	3/4"C, 2#12, 1#12G	Power Receptacles	30
31	Microwave	3/4"C, 2#12, 1#12G	20 A	1	1500	1500					1	20 A	3/4"C, 2#12, 1#12G	Electric Wall Heater	32
33	Refrigerator	3/4"C, 2#12, 1#12G	20 A	1			1500	1500			1	20 A	3/4"C, 2#12, 1#12G	Electric Wall Heater	34
35	Washer Machine	3/4"C, 2#12, 1#12G	20 A	1					1500	1500	1	20 A	3/4"C, 2#12, 1#12G	Electric Wall Heater	36
37	ASHP-1	3/4"C, 3#10, 1#10G	30 A	3	1920	2040					3	25 A	3/4"C, 3#10, 1#10G	AHU-1	38
39	--	--	--	--			1920	2040			--	--	--	--	40
41	--	--	--	--					1920	2040	--	--	--	--	42
43	EUH-1	3/4"C, 3#10, 1#10G	30 A	3	2500	3456					3	40 A	1"C, 3#8, 1#10G	VRF-1	44
45	--	--	--	--			2500	3456					--	--	46
47	--	--	--	--					2500	3456	--	--	--	--	48
49	Hot Water Heater	1-1/4"C, 3#4, 1#8G	70 A	3	6000	162					1	20 A	3/4"C, 2#12, 1#12G	Site Lighting	50
51	--	--	--	--			6000	0			1	20 A		Spare	52
53	--	--	--	--					6000	0	1	20 A		Spare	54
55	PHPU-1	2"C, 3#1/0, 1#6G	150 A	3	12240	0					1	20 A		Spare	56
57	--	--	--	--			12240	0			1	20 A		Spare	58
59	--	--	--	--					12240	0	1	20 A		Spare	60
61	Spare		20 A	1	0	0					1	20 A		Spare	62
63	Spare		20 A	1			0	0			1	20 A		Spare	64
65	Spare		20 A	1					0	0	1	20 A		Spare	66
67	Spare		20 A	1	0	0					1	20 A		Spare	68
69	Spare		20 A	1			0	0			1	20 A		Spare	70
71	Spare		20 A	1					0	0	1	20 A		Spare	72
73	Spare		20 A	1	0	0					1	20 A		Spare	74
75	Spare		20 A	1			0	0			1	20 A		Spare	76
77	Spare		20 A	1					0	0	1	20 A		Spare	78
79	Spare		20 A	1	0	0					1	20 A		Spare	80
81	Spare		20 A	1			0	0			1	20 A		Spare	82
83	Spare		20 A	1					0	0	1	20 A		Spare	84
Total Load:					40502 VA		40362 VA		40313 VA						
Total Amps:					338 A		336 A		336 A						
Legend:															
Load Classification					Connected Load		Demand Factor		Estimated Demand		Panel Totals				
Lighting					2482 VA		100.00%		2482 VA						
Other					8700 VA		80.00%		6960 VA		Total Conn. Load: 121177 VA				
Power					109500 VA		80.00%		87600 VA		Total Est. Demand: 97504 VA				
Lighting - Exterior					350 VA		100.00%		350 VA		Total Conn. Current: 336 A				
											Total Est. Demand Current: 271 A				
Notes:															
3. PROVIDE HACR BREAKER TO SUIT HEATING, AIR CONDITION AND REFRIGERATOR EQUIPMENT.															
4. PROVIDE 3/4"C, 2#12, 1#12G FOR ALL 20A-1P CKT. WITHOUT WIRE AND CONDUIT INFORMATION.															

EQUIPMENT SCHEDULE											
SYMBOL	VOLTAGE	PHASE	FLA	DISCONNECT SWITCH	BREAKER	PANEL	CONDUIT & WIRE	CONNECTION	LOCATION	NOTES	
ASHP-1	208	3	16	30A-3P	30A-3P	PP	SEE PNL. SCHEDULE	HARD-WIRED DISC. SWITCH	EXTERIOR	-	
AHU-1	208	3	17	30A-3P	25A-3P	PP	SEE PNL. SCHEDULE	HARD-WIRED DISC. SWITCH	ATTIC	-	
FCU 1-1 THRU 1-4	208	1	2	30A-2P	20A-2P	PP	SEE PNL. SCHEDULE	HARD-WIRED DISC SWITCH	SEE DRAWING E200	-	
EF-1	120	1	1	20A-1P	20A-1P	PP	SEE PNL. SCHEDULE	HARD-WIRED DISC. SWITCH	CORRIDOR	-	
EF-2	120	1	4.4	30A-1P	20A-1P	PP	SEE PNL. SCHEDULE	HARD-WIRED DISC. SWITCH	GROOMING - 111	-	
EF-3	120	1	4.4	30A-1P	20A-1P	PP	SEE PNL. SCHEDULE	HARD-WIRED DISC. SWITCH	ATTIC	-	
EF-4	120	1	4.4	30A-1P	20A-1P	PP	SEE PNL. SCHEDULE	HARD-WIRED DISC. SWITCH	ATTIC	-	
EF-5	120	1	1	30A-1P	20A-1P	PP	SEE PNL. SCHEDULE	HARD-WIRED DISC. SWITCH	GROOMING - 111	-	
EF-6	120	1	5.8	30A-1P	20A-1P	PP	SEE PNL. SCHEDULE	HARD-WIRED DISC. SWITCH	ATTIC	-	
EF-7	120	1	5.8	30A-1P	20A-1P	PP	SEE PNL. SCHEDULE	HARD-WIRED DISC. SWITCH	ATTIC	-	
ERV-1	120	1	15	30A-1P	25A-1P	PP	SEE PNL. SCHEDULE	HARD-WIRED DISC. SWITCH	ATTIC	5	
ERV-2	120	1	12	30A-1P	25A-1P	PP	SEE PNL. SCHEDULE	HARD-WIRED DISC. SWITCH	ATTIC	5	
EUH-1	208	3	21	30A-3P	30A-3P	PP	SEE PNL. SCHEDULE	HARD-WIRED DISC. SWITCH	ATTIC	5	
EW-H1 THRU 4	120	1	12.5	30A-1P	20A-1P	PP	SEE PNL. SCHEDULE	HARD-WIRED DISC. SWITCH	SEE DRAWING E210	-	
VFR-1	208	1	28	60A-3P	40A-3P	PP	SEE PNL. SCHEDULE	HARD-WIRED DISC. SWITCH	EXTERIOR	-	
HHW-1	208	3	50	60A-3P	70A-3P	PP	SEE PNL. SCHEDULE	HARD-WIRED DISC. SWITCH	MECHANICAL ROOM 106	-	
PHPU-1	208	3	102	200A-3P	150A-3P	PP	SEE PNL. SCHEDULE	HARD-WIRED DISC. SWITCH	EXTERIOR	5.6	

NOTES:

- REFER TO ELECTRICAL AND MECHANICAL DRAWINGS FOR QUANTITY.
- PROVIDE ANY 120V WIRING REQUIRED TO INTERLOCK EQUIPMENT WITH HVAC CONTROL.
- UPGRADE WIRE SIZE AS REQUIRED TO MAINTAIN 3% MAXIMUM VOLTAGE DROP
- CONNECT EXHAUST FAN IN TOILET, GROOMING AND MECHANICAL ROOM WITH LOCAL LIGHT SWITCH.
- SAFETY DISCONNECT SWITCH TO BE PROVIDED WITH UNIT. INSTALLED AND WIRED BY ELECTRICAL CONTRACTOR.
- UNIT TO BE PROVIDED INTEGRATED POWER RECEPTACLE TO BE WIRED FROM A SEPERATE 120V CIRCUIT.

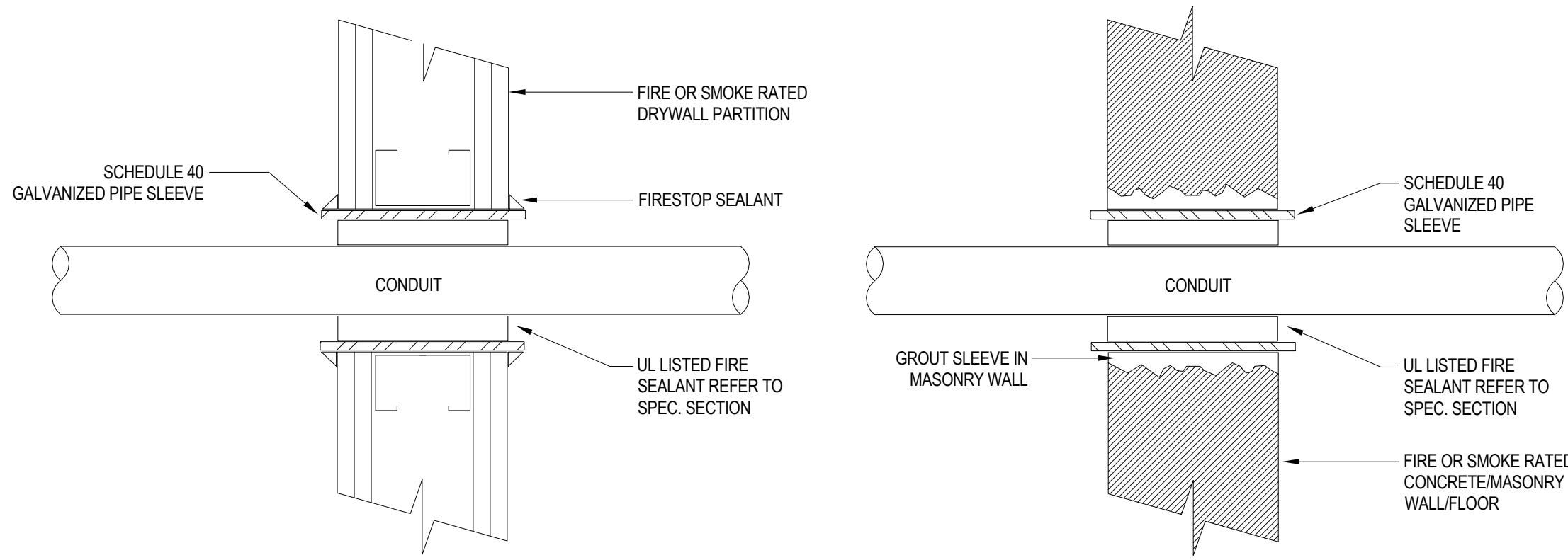
LIGHTING FIXTURE SCHEDULE									
DESIGNATION	DESCRIPTION	MANUFACTURER/ MODEL NUMBER	LAMP			ELECTRICAL			NOTES
			TYPE	COLOR TEMP	NO	DRIVER	VOLTAGE	WATTS	
A	2' X 2' RECESSED LED EDGE LIT FLAT PANEL WITH ACRYLIC BLEND FROSTER LENS AND SWITCHABLE LUMEN TECHNOLOGY	COLUMBIA CF22-40392835	LED	4000K		ELECTRONIC	120	40	
A/EM	SAME AS TYPE - A WITH INTEGRATED EMERGENCY BATTERY PACK	COLUMBIA CF22-40392835-PLD10M	LED	4000K		ELECTRONIC	120	40	
B2	2' LENGTH SURFACE MOUNTED LED GASKETED LINEAR RATED FOR EXTREME ENVIROMTMENT AND WITH RIBBED FROSTED ACRYLIC LENS	COLUMBIA LXM2-40LW-RFA-ED-U	LED	4000K		DIMMING	120	26	
B4	4' LENGTH SURFACE MOUNTED LED GASKETED LINEAR RATED FOR EXTREME ENVIROMTMENT AND WITH RIBBED FROSTED ACRYLIC LENS	COLUMBIA LXM4-40ML-RFA-ED-U	LED	4000K		DIMMING	120	42	
B4/EM	SAME AS TYPE - B4 WITH INTEGRATED EMERGENCY BATTERY PACK	COLUMBIA LXM4-40ML-RFA-ED-U-ELL14	LED	4000K		DIMMING	120	42	
B8	8' LENGTH SURFACE MOUNTED LED GASKETED LINEAR RATED FOR EXTREME ENVIROMTMENT AND WITH RIBBED FROSTED ACRYLIC LENS	COLUMBIA LXM8-40ML-RFA-ED-U	LED	4000K		DIMMING	120	84	
B8/EM	SAME AS TYPE - B8 WITH INTEGRATED EMERGENCY BATTERY PACK	COLUMBIA LXM8-40ML-RFA-ED-U-ELL14	LED	4000K		DIMMING	120	42	
C	6" DIAMETER RECESSED LED DOWNLIGHT	PRESCOLITE LFR-6RD-M-20L40K8-WD	LED	4000K		ELECTRONIC	120	14.6	
C/EM	SAME AS TYPE - C WITH INTEGRATED EMERGENCY BATTERY PACK	PRESCOLITE LFR-6RD-M-20L40K8-WD-EM	LED	4000K		ELECTRONIC	120	14.6	
C1	6" DIAMETER RECESSED LED SHOWER DOWNLIGHT WITH LENS	PRESCOLITE LTR-6RD (SH)-H-SL15L	LED	4000K		ELECTRONIC	120	18.7	
C2	6" DIAMETER ADJUSTABLE RECESSED LED DOWNLIGHT	PRESCOLITE LTR-6RD-H-SL15L / LTR-6RD-T-SL40K8	LED	4000K		ELECTRONIC	120	18.7	
C2/EM	SAME AS TYPE - C2 WITH INTEGRATED EMERGENCY BATTERY PACK	PRESCOLITE LTR-6RD-H-SL15L-EM / LTR-6RD-T-SL40K8	LED	4000K		ELECTRONIC	120	18.7	
X	THERMOPLASTIC LED EXIT SIGN	DUAL LITE EVE-U-R-W-E-I	LED	-	-	-	120	2.2	①
X1	THERMOPLASTIC LED EXIT SIGN WITH ARROW	DUAL LITE EVE-U-R-W-E-I	LED	-	-	-	120	2.2	①
X2	EXIT LED SIGN WITH POLYCARBONITE HOUSING AND RATED FOR WET LOCATION	DUAL LITE EVE4X-R-W-A	LED	-	-	-	120	1.42	①
XHC	ADA EDGE-LIT SIGN WITH DYNAMIC HANDICAP SYMBOL AND UNIVERSAL MOUNTING KIT	SIGNTEX INC CAEBS-1RCW-NA-TW	LED	-	-	-	120	1.42	① ⑦



1 Electrical One-Line Riser Diagram  
1/2\"/>

CONDUCTOR NOTES:

- UNLESS OTHERWISE INDICATED ALL VALUES BASED ON COPPER CONDUCTORS.
- FEEDERS**  
UPGRADE WIRE TO MAINTAIN MAXIMUM OF 2% VOLTAGE DROP.
- BRANCH CIRCUITS**  
UPGRADE WIRE TO MAINTAIN MAXIMUM OF 3% VOLTAGE DROP.
- NUMBER OF WIRES SHALL BE DETERMINED WITH EQUIPMENT ELECTRICAL NAMEPLATE CHARACTERISTICS.
- WHERE NEUTRALS ARE REQUIRED, IT SHALL MATCH FEEDER CONDUCTOR SIZE.
- USE CONDUCTOR (THWN/THHN) (3PH, 3W) WITH GROUND PRIMARY FEEDER FOR TRANSFORMERS.

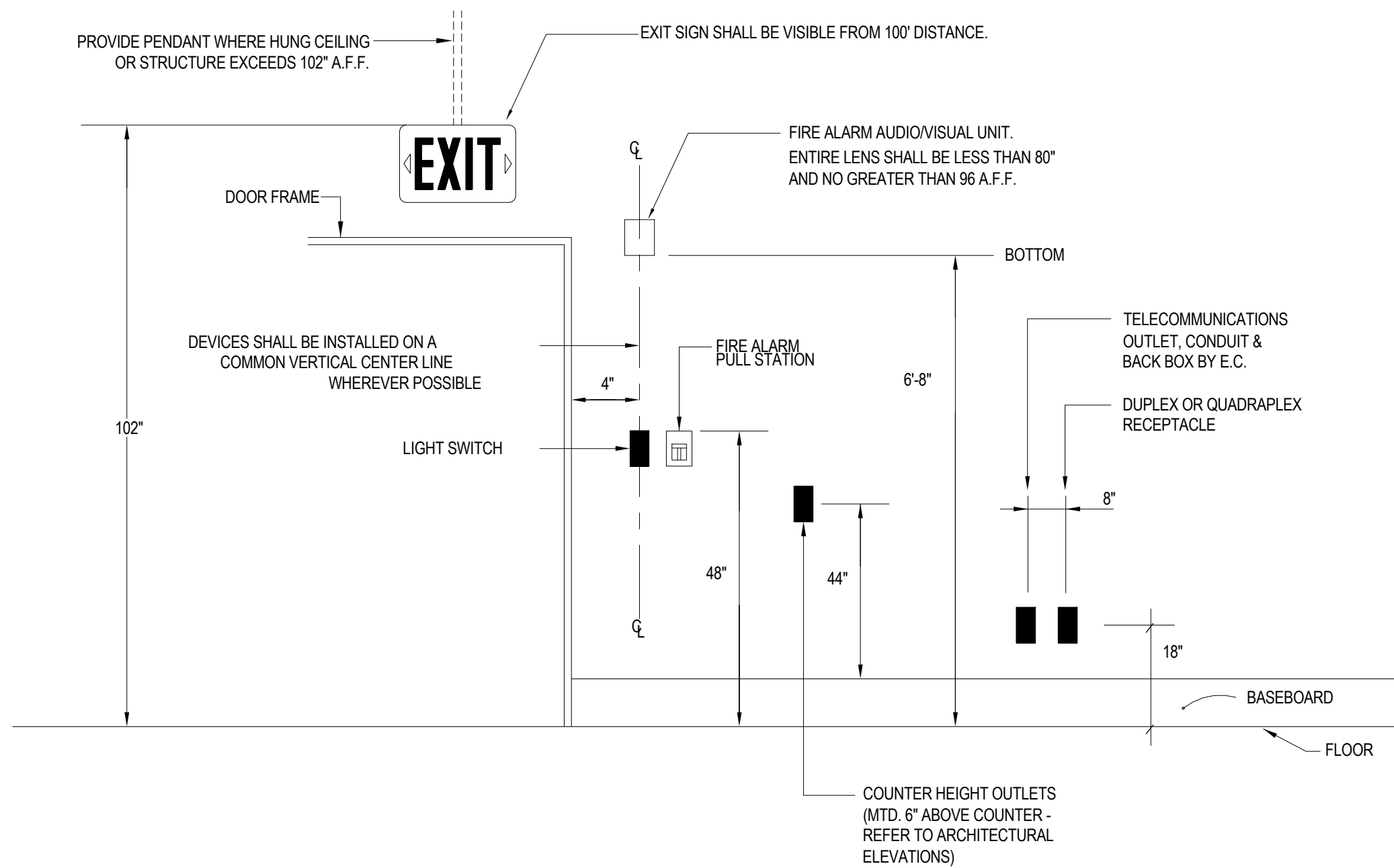


## 1 WALL/FLOOR PENETRATION W/FIRE-SMOKE SEAL DETAIL

NOT TO SCALE

### GENERAL NOTES:

1. PROVIDE UL LISTED FIRE/SMOKE PENETRATION ASSEMBLY IN ACCORDANCE W/ UL 1479, ASTM E814 REQUIREMENTS FOR WALL TYPE, RATING, PIPE SIZE INSTALLED.
2. FIRE STOPPING SHALL HAVE A RATING EQUAL TO OR GREATER THAN THE WALL/FLOOR BEING PENETRATED - SEE SPECIFICATIONS. REFER TO ARCHITECTURAL CODE DRAWINGS FOR WALL/FLOOR RATINGS AND LOCATIONS.
3. AT NON-RATED ASSEMBLIES INFILL ANNULAR VOID WITH MINERAL WOOL AND CAP WITH SEALANT.



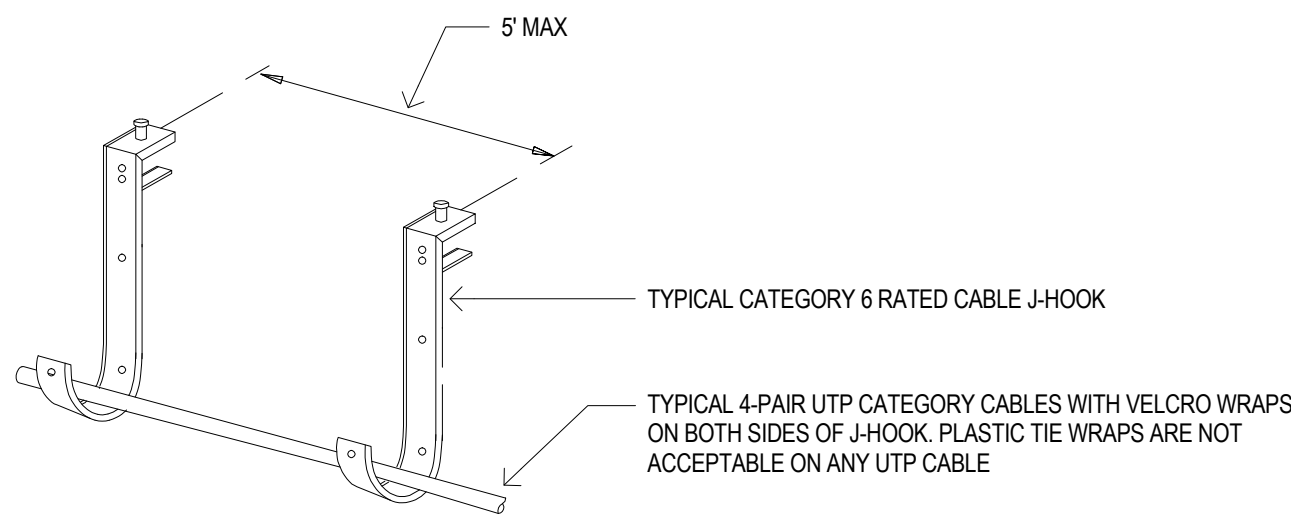
## 2 OUTLET MOUNTING DETAIL

NOT TO SCALE

(TYP. ALL OUTLETS UNLESS OTHERWISE NOTED.)

### NOTES:

1. ALL MOUNTING HEIGHTS SHALL BE MEASURED FROM FIN. FLOOR TO CENTERLINE OF DEVICE (EXCEPT FOR EXIT SIGNS, FIRE ALARM PULL STATION AND LIGHTING SWITCH).
2. DEVICES SHALL BE INSTALLED ON A COMMON VERTICAL CENTERLINE WHEREVER POSSIBLE.
3. ALL DEVICES SHALL BE INSTALLED AT THE MOUNTING HEIGHTS INDICATED ON THIS DETAIL, UNLESS OTHERWISE NOTED. REFER TO ARCHITECTURAL INTERIOR ELEVATIONS FOR MOUNTING HEIGHTS OF RECEPTACLES LOCATED ABOVE COUNTERS.
4. THE LOCATION OF WALL OUTLETS ARE DIRECTLY RELATED TO THE FURNITURE LOCATION. SPECIAL ATTENTION SHALL BE GIVEN TO LOCATING OUTLETS PER THIS DETAIL. DO NOT INSTALL OUTLETS BACK TO BACK.

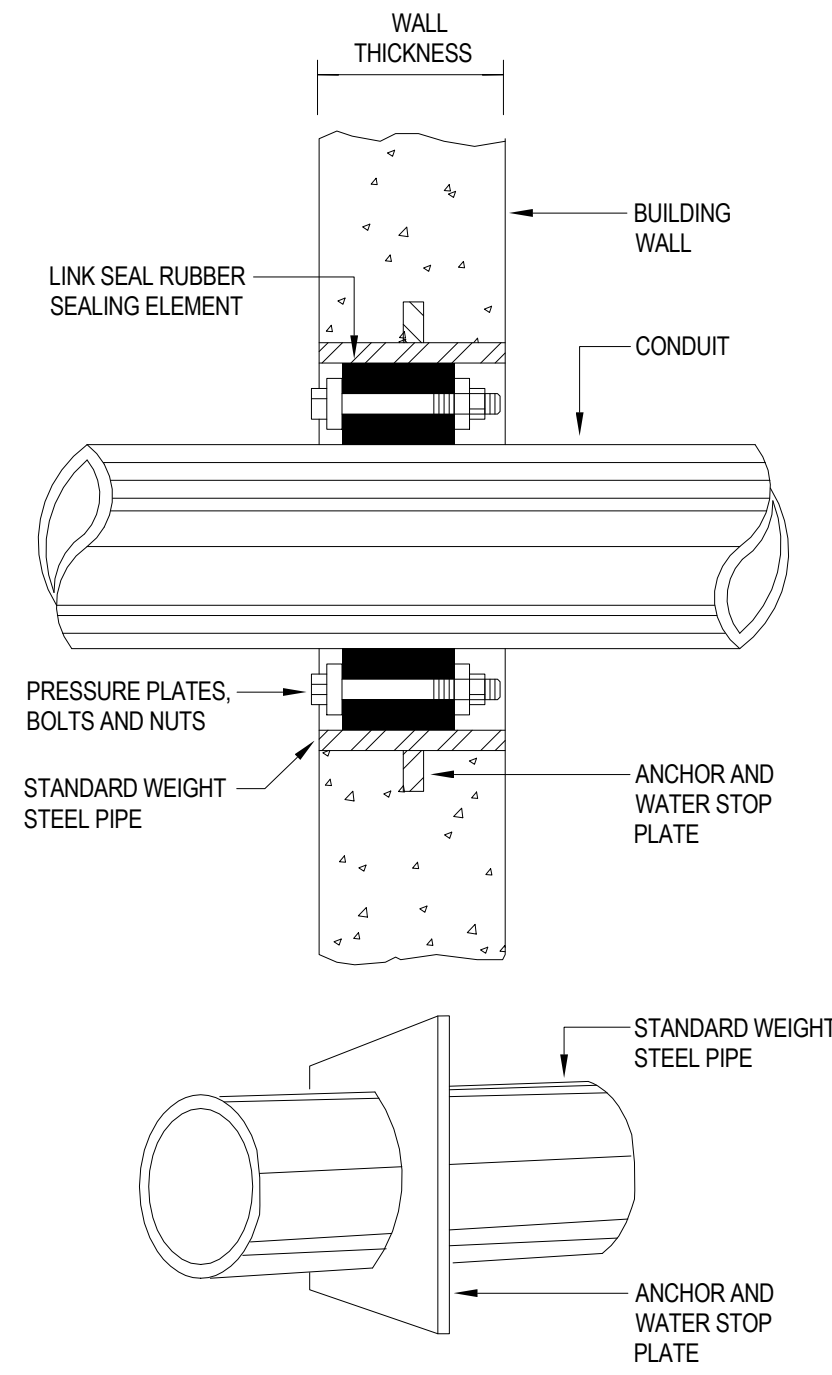


## 3 TYPICAL DATA J-HOOK INSTALLATION

NOT TO SCALE

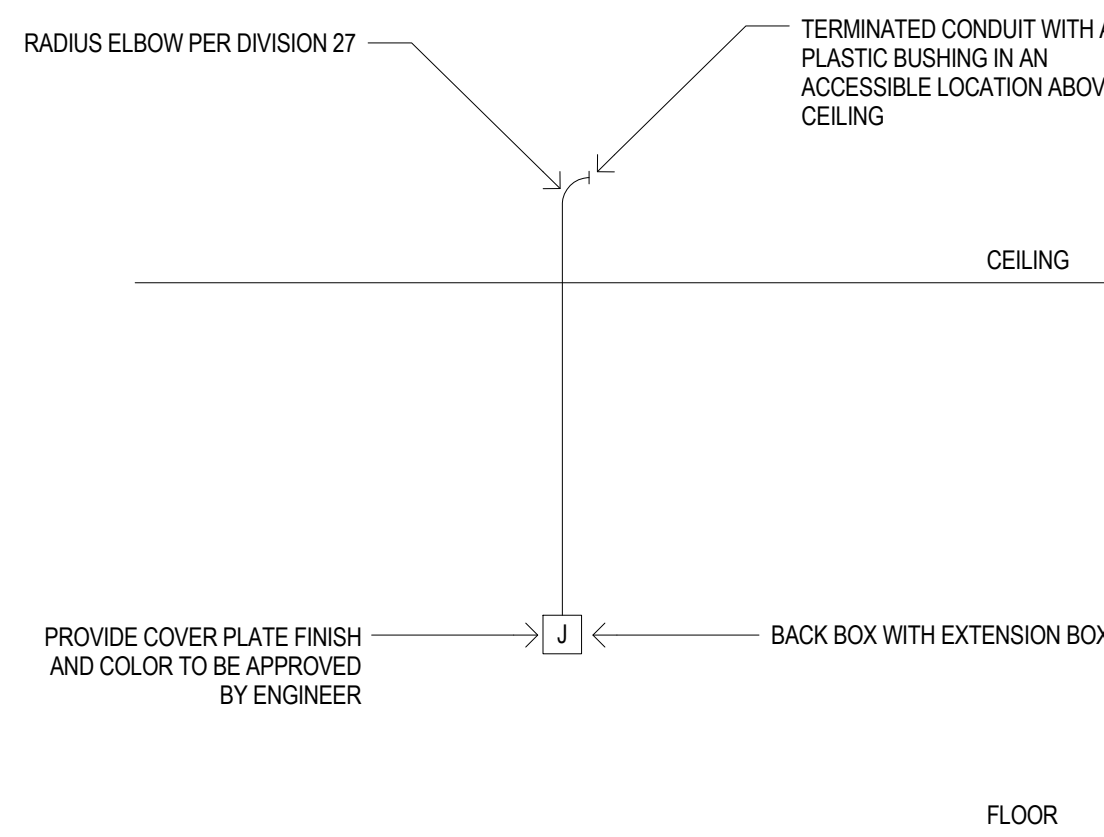
### NOTES:

1. J-HOOKS SHALL BE SIZED TO ACCOMMODATE TWICE AS MANY CABLES REQUIRED TO BE SUPPORTED INCLUDING AN ADDITIONAL 40% HEADROOM.



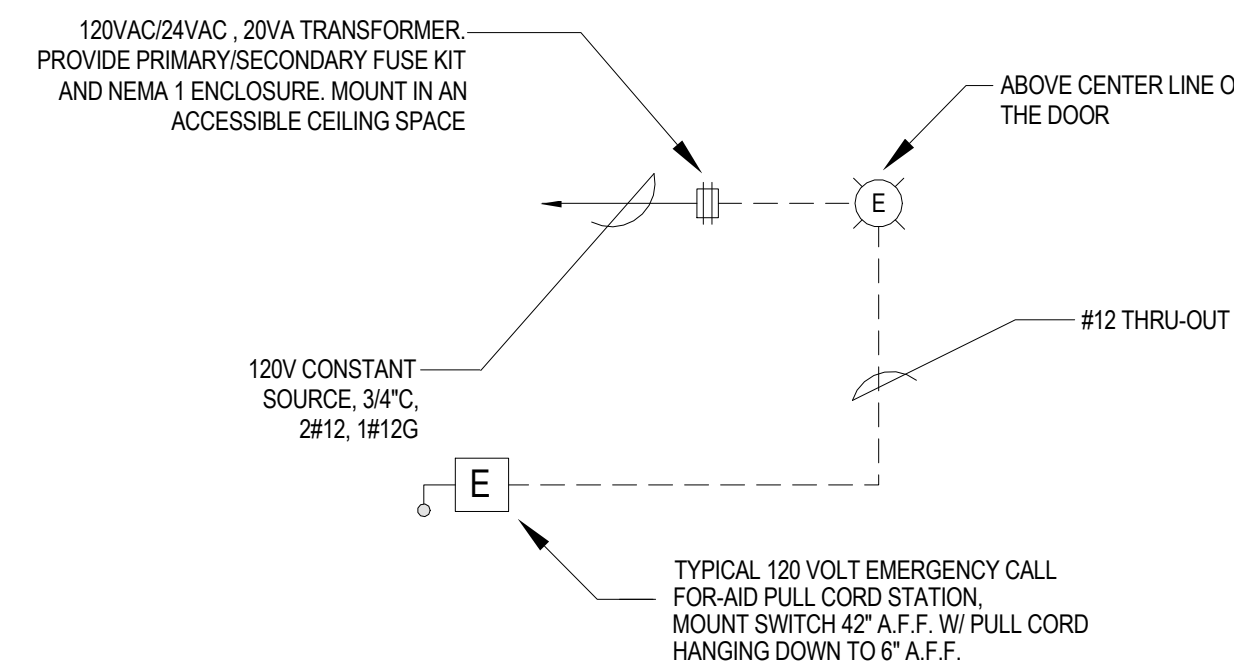
## 4 WATER-TIGHT WALL SLEEVE

NOT TO SCALE



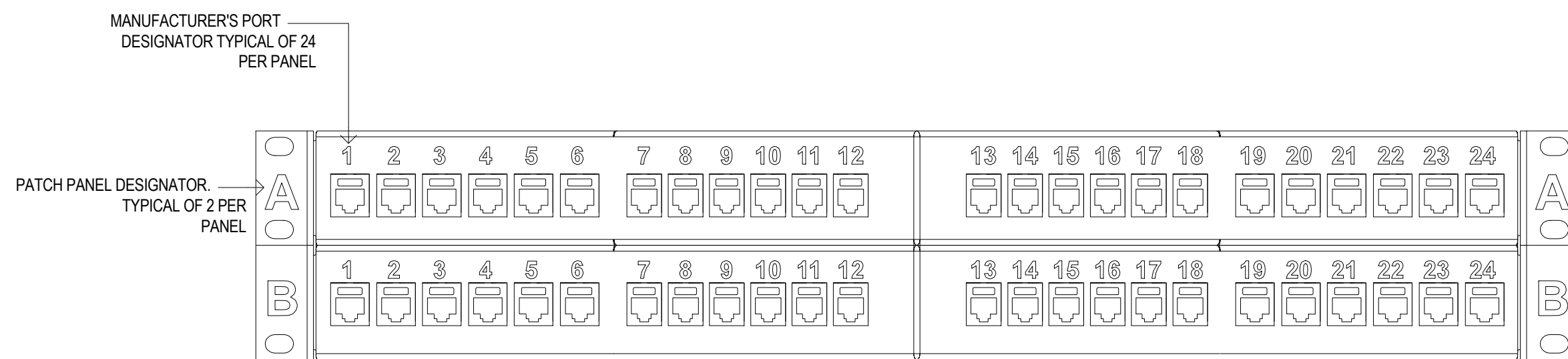
## 5 DATA OUTLET RECESSED RACEWAY DETAIL

NOT TO SCALE



## 6 HANDICAPPED CALL-FOR-AID SYSTEM

NOT TO SCALE

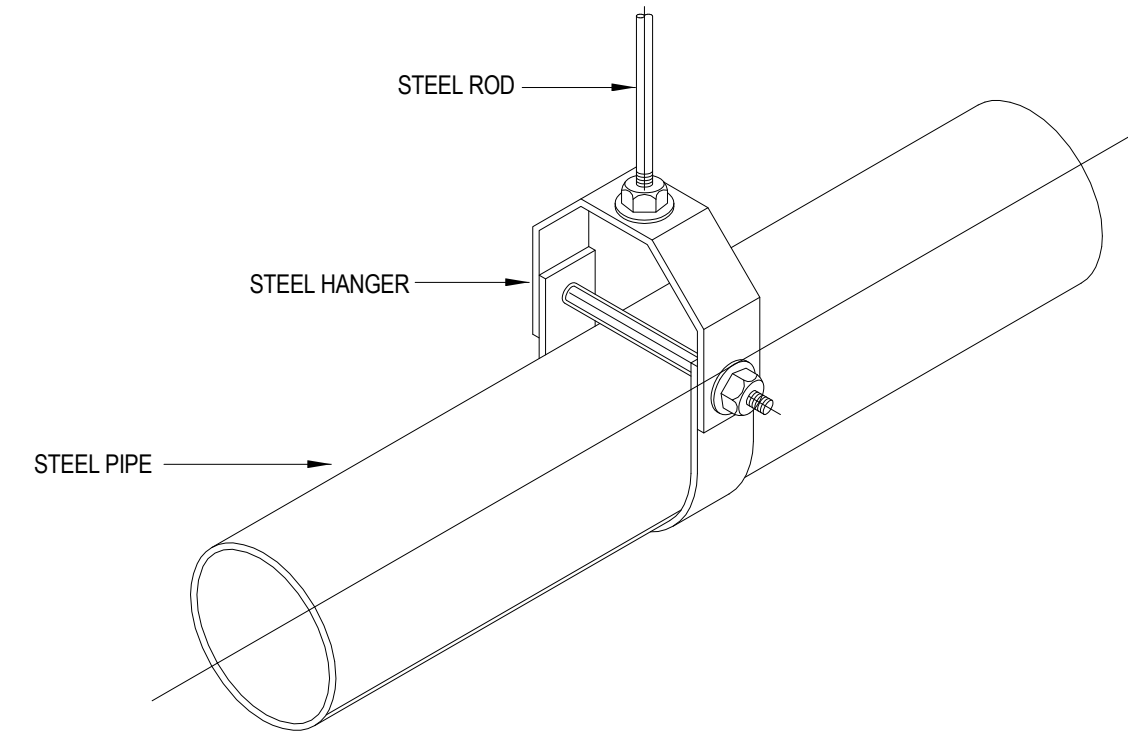


## 7 COMMUNICATION PATCH PANEL - DATA LABELING

NOT TO SCALE

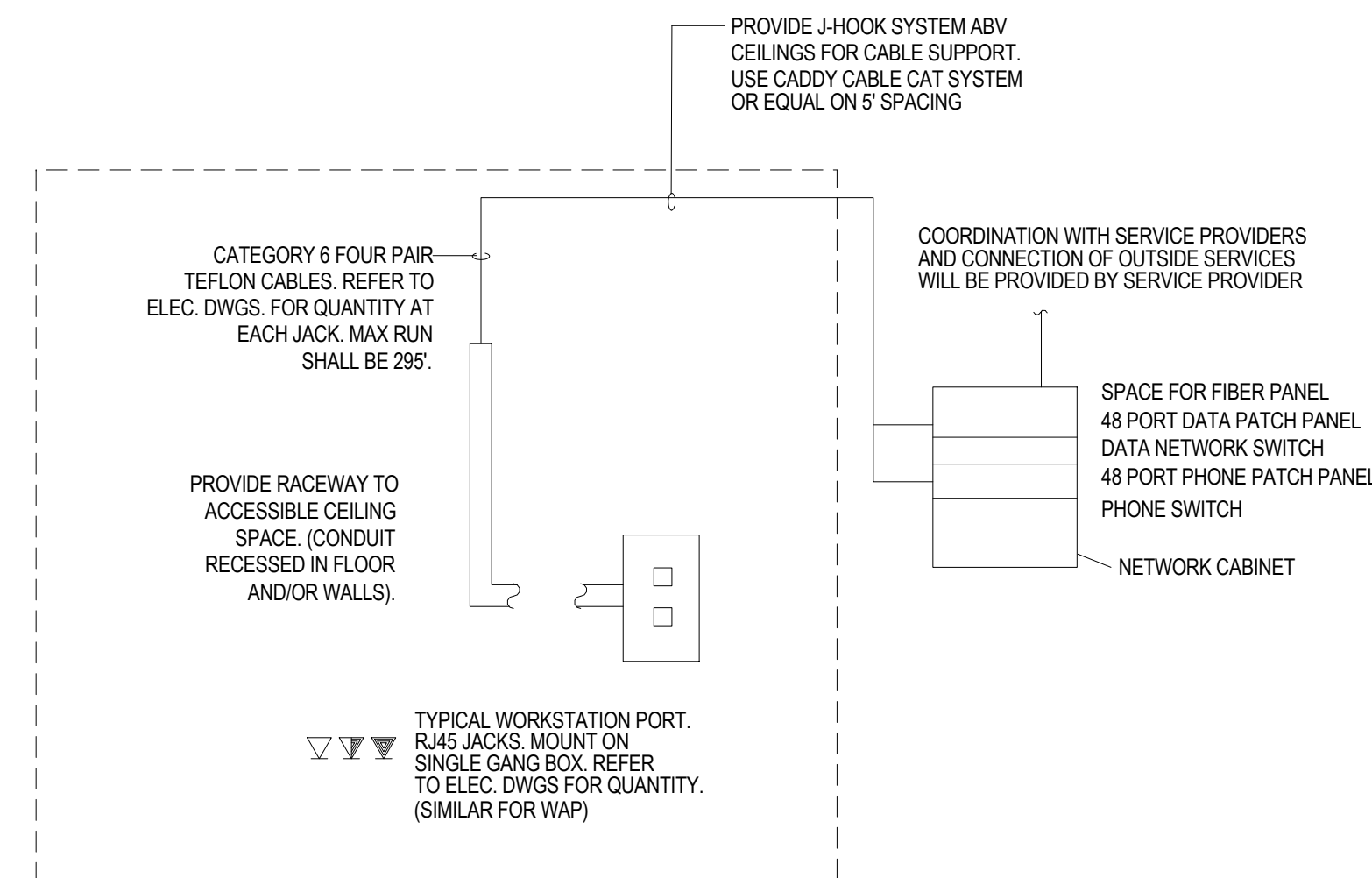
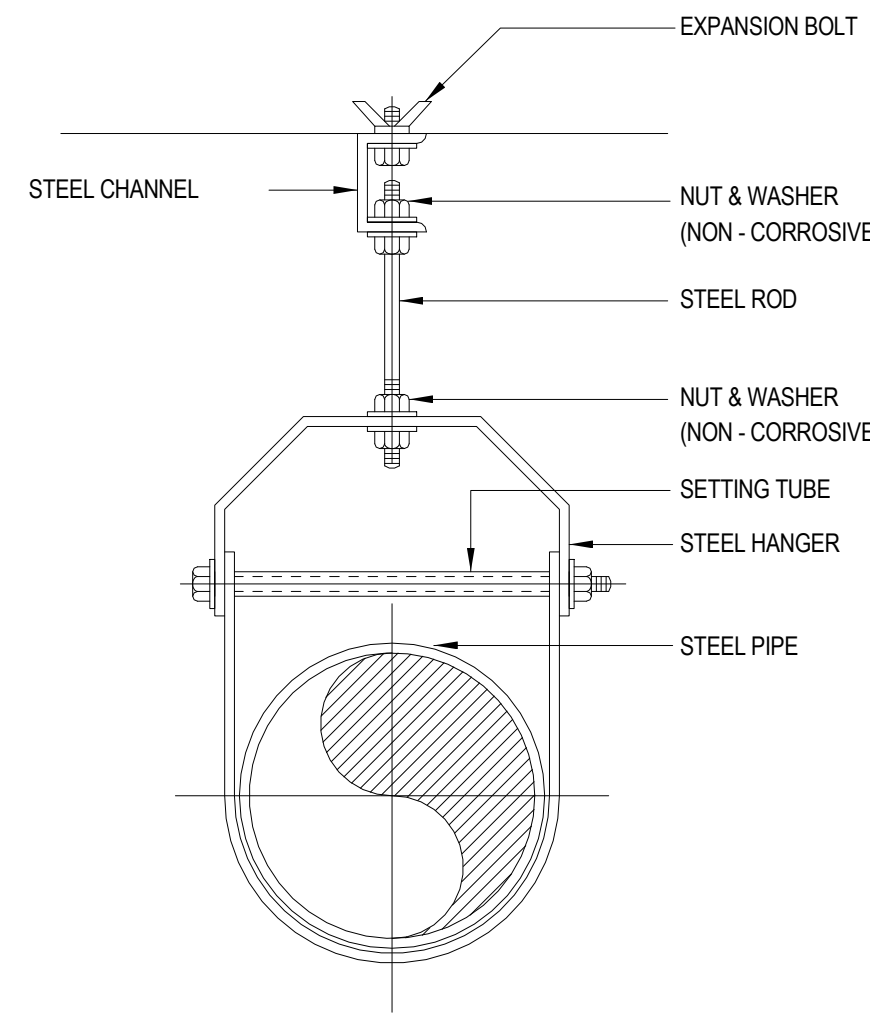
### NOTES:

1. LABEL PATCH PANELS FROM TOP TO BOTTOM AS "A", "B", "C", "D" AS REQUIRED. REQUIRED ON LEFT AND RIGHT SIDE OF PATCH PANEL AS SHOWN.
2. CONTRACTOR MUST CONFIRM LABELING SCHEME WITH THE OWNER PRIOR TO TESTING AND FINAL LABELING OF ALL VOICE, DATA CABLING.



## 8 PIPE HANGER DETAIL

NOT TO SCALE



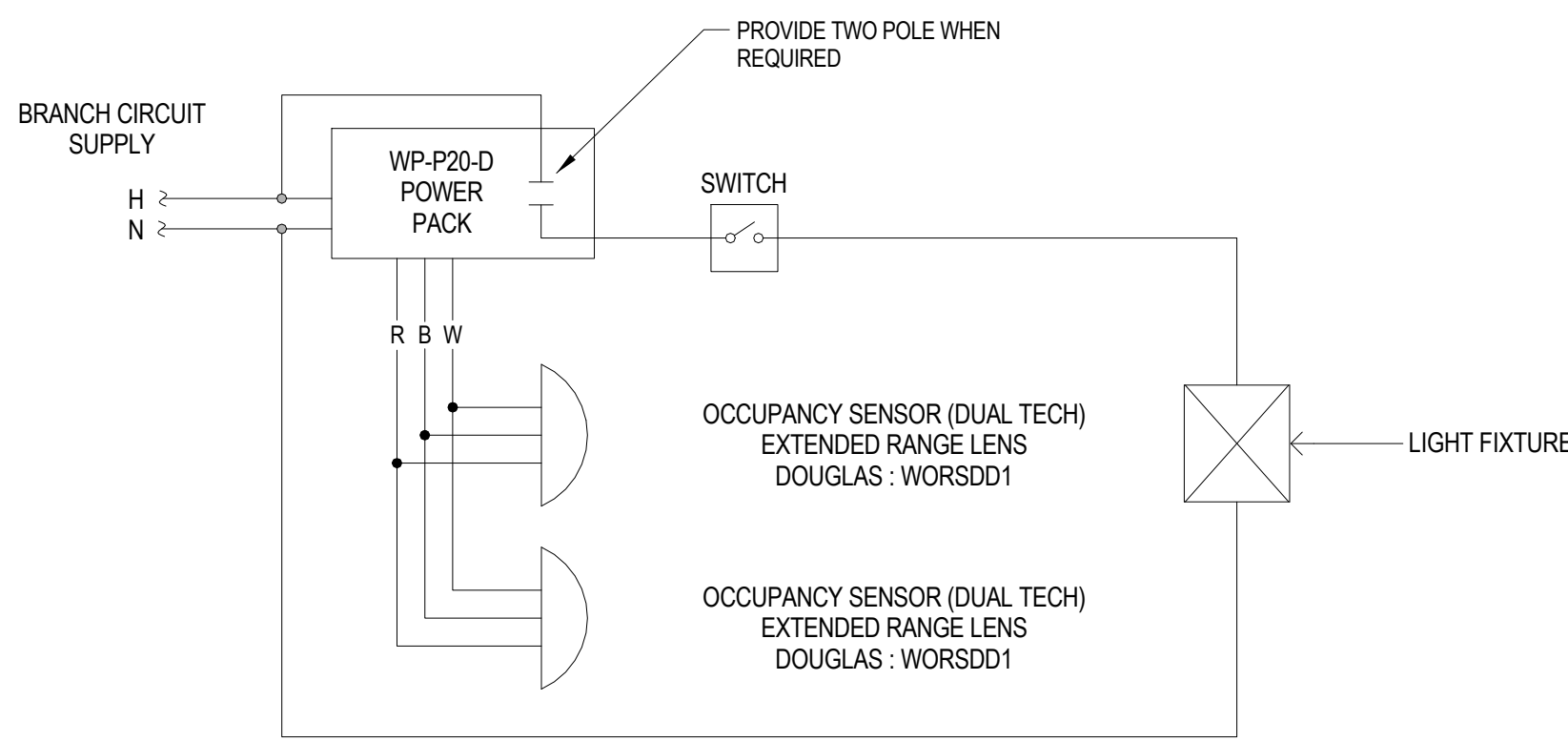
## 9 PHONE & DATA NETWORK DIAGRAM

NOT TO SCALE

### NOTES:

1. CONTRACTOR IS RESPONSIBLE FOR SUPPLYING AND INSTALLING ALL EQUIPMENT, CATS WIRING, AND WIRING FROM CORRESPONDING IT CABINET OR TERMINAL TO EACH OUTLET/DROP LOCATION.
2. PHONE AND DATA SYSTEMS SHALL BE INSTALLED AND TESTED. TESTING OF CAT 6 CABLES AND INSTALLATION AND IDENTIFICATION OF JACKS AT LOCATIONS SHOWN ON DRAWINGS. TERMINATION OF CABLES AT CABINET MOUNTED PATCH AND SWITCH PANELS. INSTALLATION AS LISTED ABOVE INDICATES RESPONSIBILITY TO FURNISH, INSTALL, TEST AND WARRANTY THE ITEM.



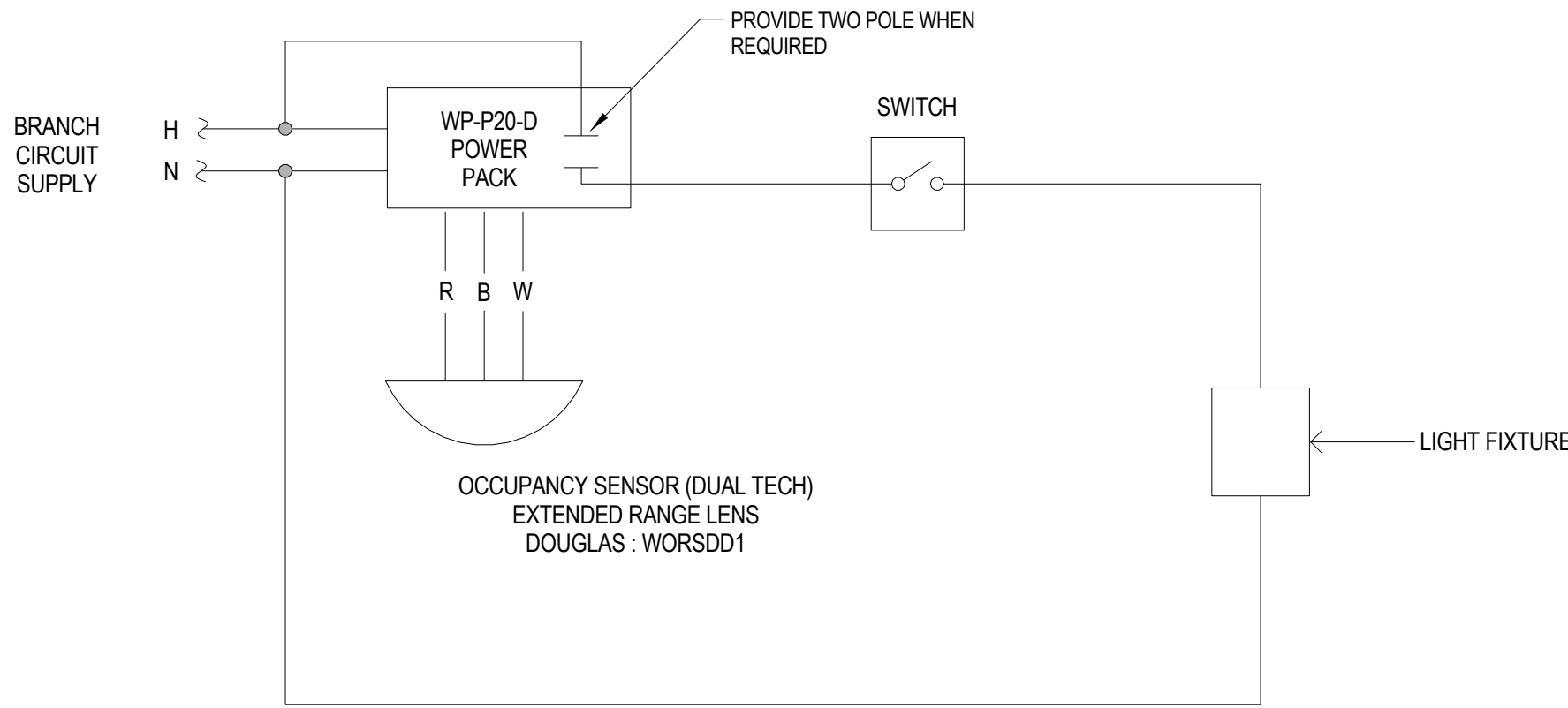


### 1 CEILING MULTIPLE OCCUPANCY SENSOR DETAIL

NOT TO SCALE

#### NOTE:

1. TYPICAL CEILING OCCUPANCY SENSOR SUIT CORRIDORS AND ROOMS WITHOUT DAYLIGHT PHOTOSENSOR AND DIMMING SWITCHES
2. EXACT QUANTITY OF DEVICES MAY DIFFER FROM THIS DETAIL. CONTRACTOR SHALL PROVIDE ACTUAL QUANTITY REQUIRED. REFER TO LIGHTING FLOOR PLAN.
3. OCCUPANCY SENSOR WITH LETTER "W" NEXT TO SYMBOL ARE TO BE CORNER/WALL MOUNTED.

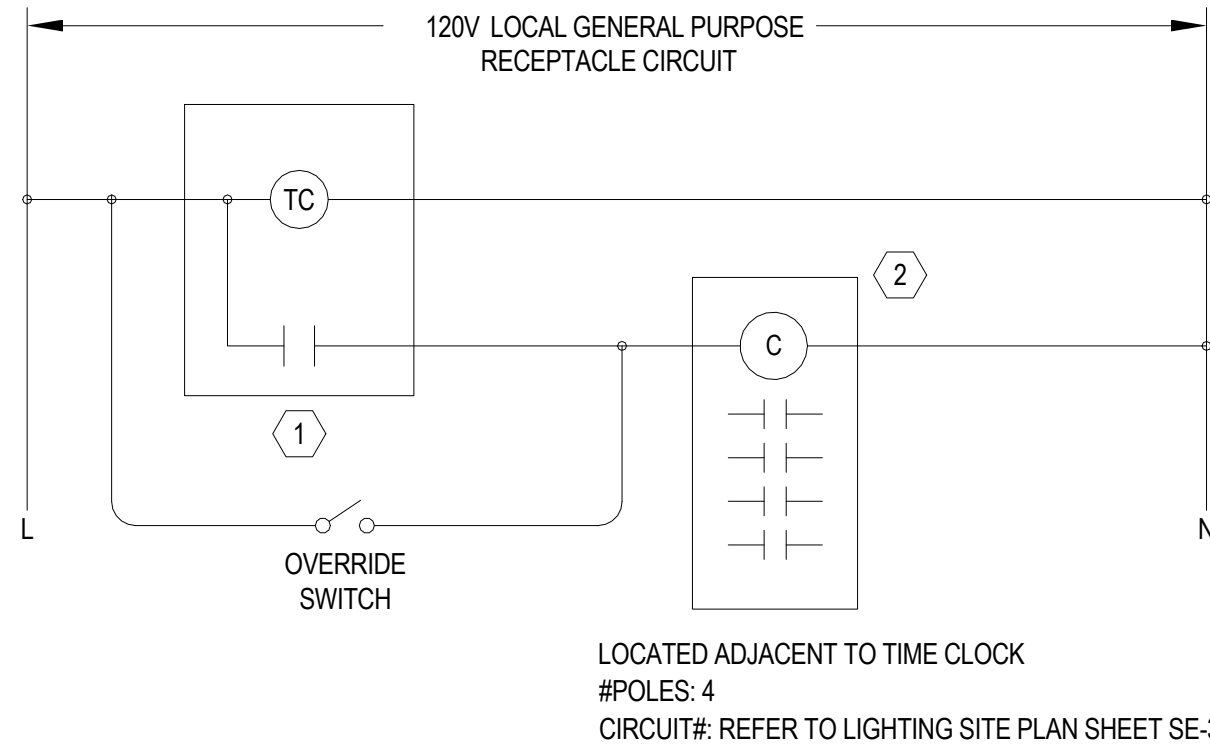


### 3 CEILING OCCUPANCY SENSOR DETAIL

NOT TO SCALE

#### NOTE:

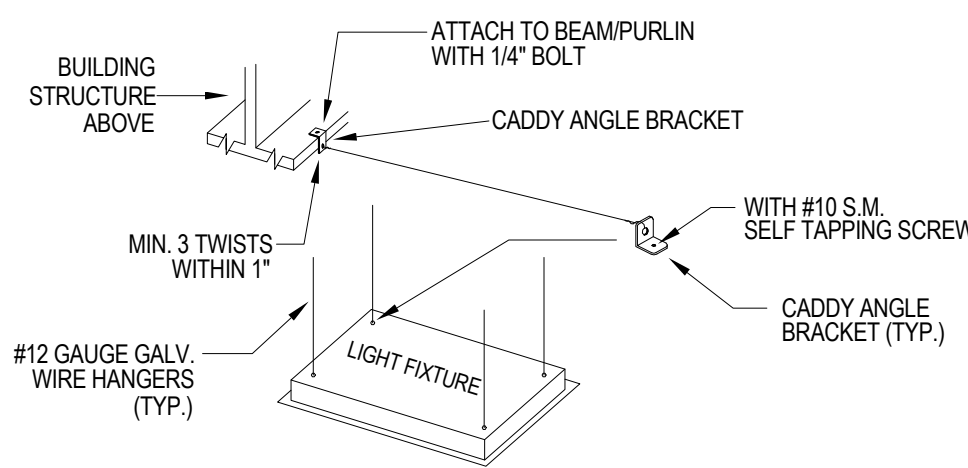
1. TYPICAL CEILING OCCUPANCY SENSOR SUIT CORRIDORS AND ROOMS WITHOUT DAYLIGHT PHOTOSENSOR AND DIMMING SWITCHES
2. EXACT QUANTITY OF DEVICES MAY DIFFER FROM THIS DETAIL. CONTRACTOR SHALL PROVIDE ACTUAL QUANTITY REQUIRED. REFER TO LIGHTING FLOOR PLAN.
3. OCCUPANCY SENSOR WITH LETTER "W" NEXT TO SYMBOL ARE TO BE CORNER/WALL MOUNTED.



CONTACTOR SCHEDULE			
TAG	DESCRIPTION	MODEL NO.	REMARKS
①	DIGITAL PROGRAMMABLE TIME CLOCK 24HR. 7DAY 365DAY. SEASONAL SCHEDULING. 99 ON/OFF POINTS. PERMANENT SCHEDULE RETENTION ON POWER LOSS. POWER OUTAGE BACKUP. AUTOMATIC LEAP YEAR AND DAYLIGHT SAVINGS TIME ADJ. MECHANICALLY HELD CONTACTS. MULTI VOLTAGE INPUT.	TORK 025100A OR EQUIVALENT INTERMATIC OR SQUARE D	1,2
②	CONTACTOR ELECTRICALLY OPERATED. MECHANICALLY HELD. 25A LIGHTING CONTACTOR. CONTROL VOLTAGE AS LISTED. FROM LOCAL GENERAL PURPOSE RECEPTACLE CIRCUIT.	ASCO 91T SERIES WITH 2 WIRE CONTROL OPTION OR EQUIVALENT GE OR SQUARE D	
NOTES: 1. TIMECLOCK SHALL BE PROGRAMMED TO TURN SITE LIGHTING ON AT DUSK (1/4 PHOTOCELL) AND OFF AT 10PM DAILY AS PER TOWN ZONING REQUIREMENTS. 2. LOCATE TIME CLOCK ADJACENT TO ELECTRICAL PANEL.			

### 2 LIGHTING TIME CLOCK AND CONTACTOR DIAGRAM

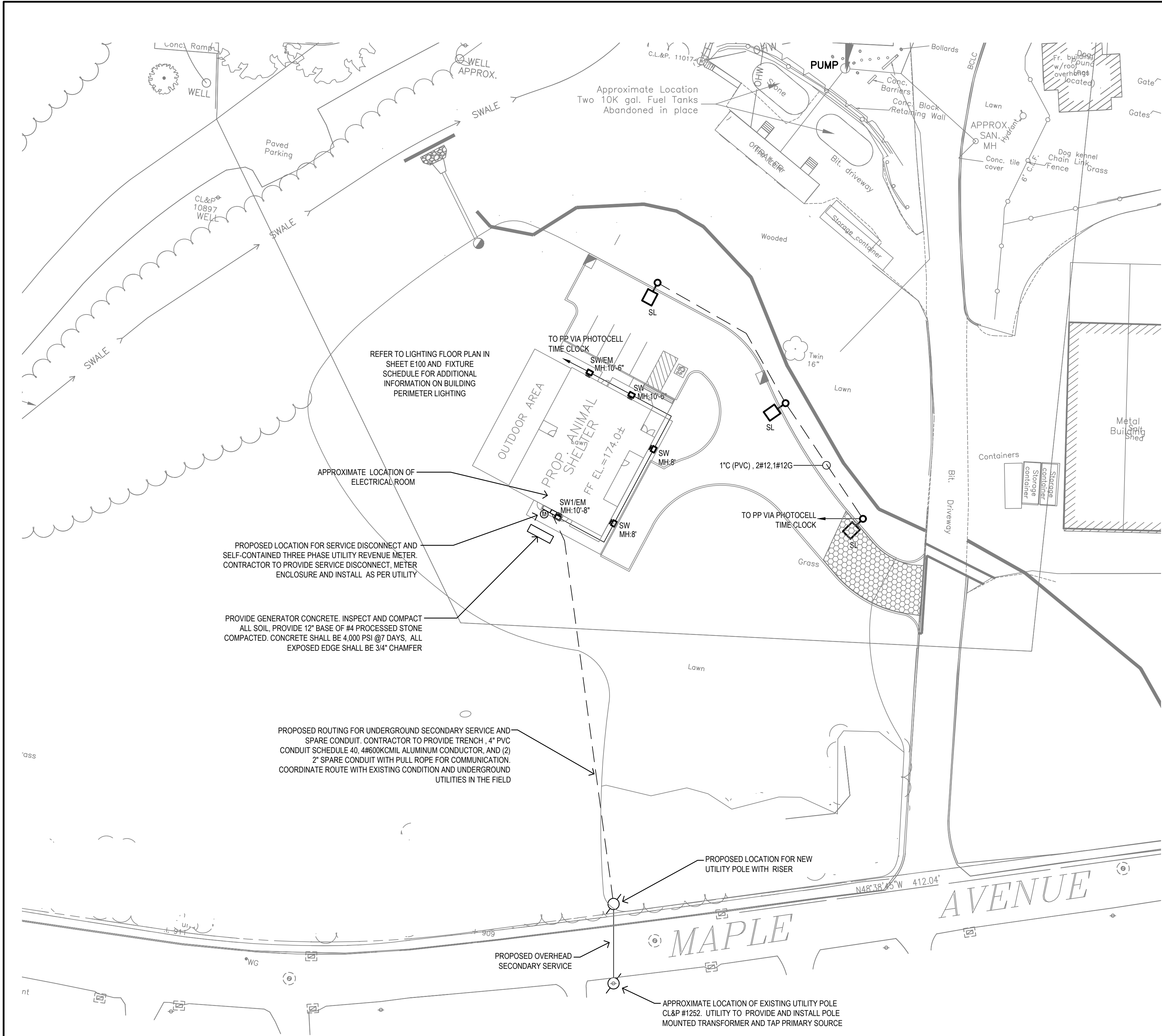
NOT TO SCALE



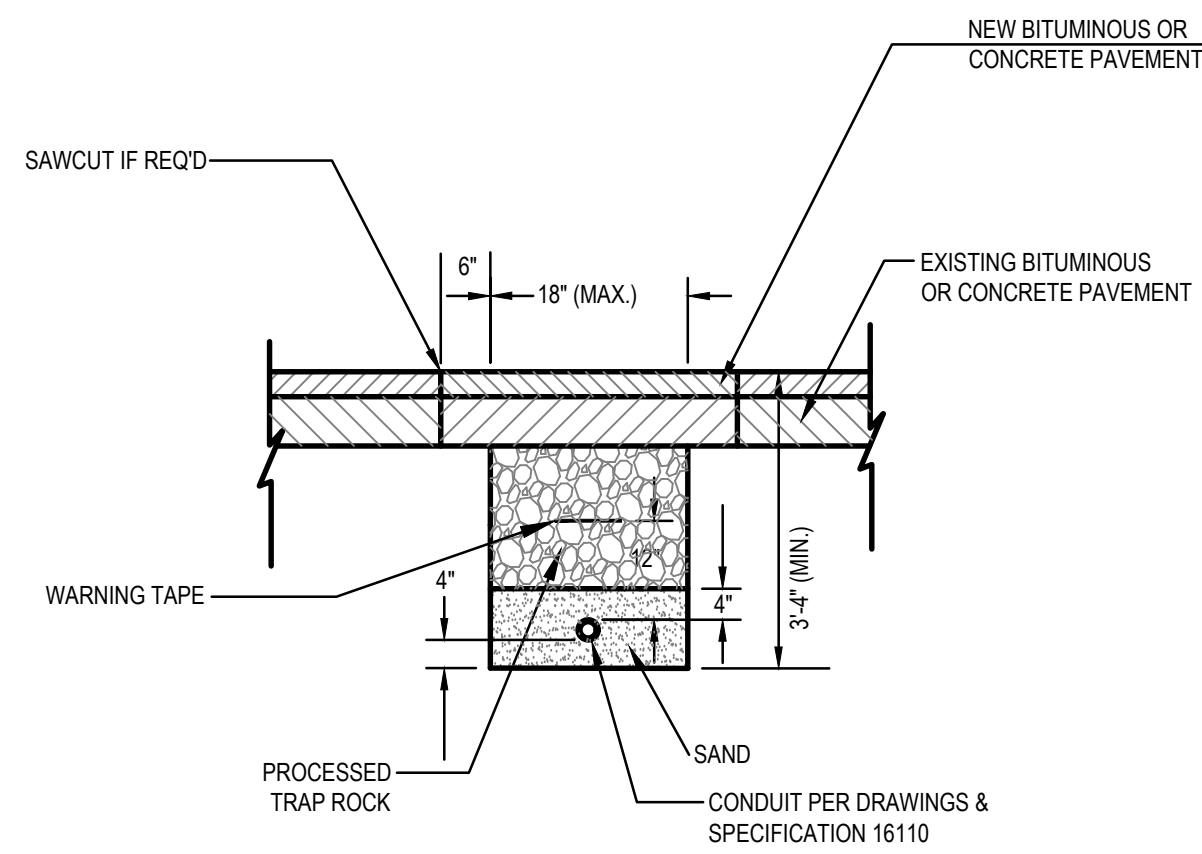
### 4 TYPICAL LAY-IN GRID LIGHTING FIXTURE SUPPORT/MOUNTING DETAIL

NOT TO SCALE

1. ALL LIGHTING FIXTURES SHALL BE SECURED TO THE STRUCTURE BY THE ELECTRICAL CONTRACTOR.
2. FLUSH OR RECESSED LIGHT FIXTURES LESS THAN 55 POUNDS SHALL HAVE 2 - 12 GA. SLACK SAFETY WIRES FROM DIAGONAL CORNERS TO BUILDING STRUCTURE BY TRADE CONTRACTOR.
3. FLUSH OR RECESSED LIGHT FIXTURES MORE THAN 55 POUNDS SHALL HAVE 4 - 12 GA. SLACK SAFETY WIRES FROM DIAGONAL CORNERS TO BUILDING STRUCTURE BY TRADE CONTRACTOR.
4. SECURE SURFACE MOUNTED LIGHT FIXTURES W/ MINIMUM OF 2 - POSITIVE CLAMPING DEVICES OF 1/4 GA. MINIMUM STEEL AND W/ 12 GA. WIRE TO BUILDING STRUCTURE.



1 ELECTRICAL SITE PLAN  
1"=30'-0"



3 TYPICAL TRENCHING AND BACKFILLING DETAIL  
NOT TO SCALE

- NOTES:
1. FOR NEW BITUMINOUS PROVIDE: 1-1/2\"/>

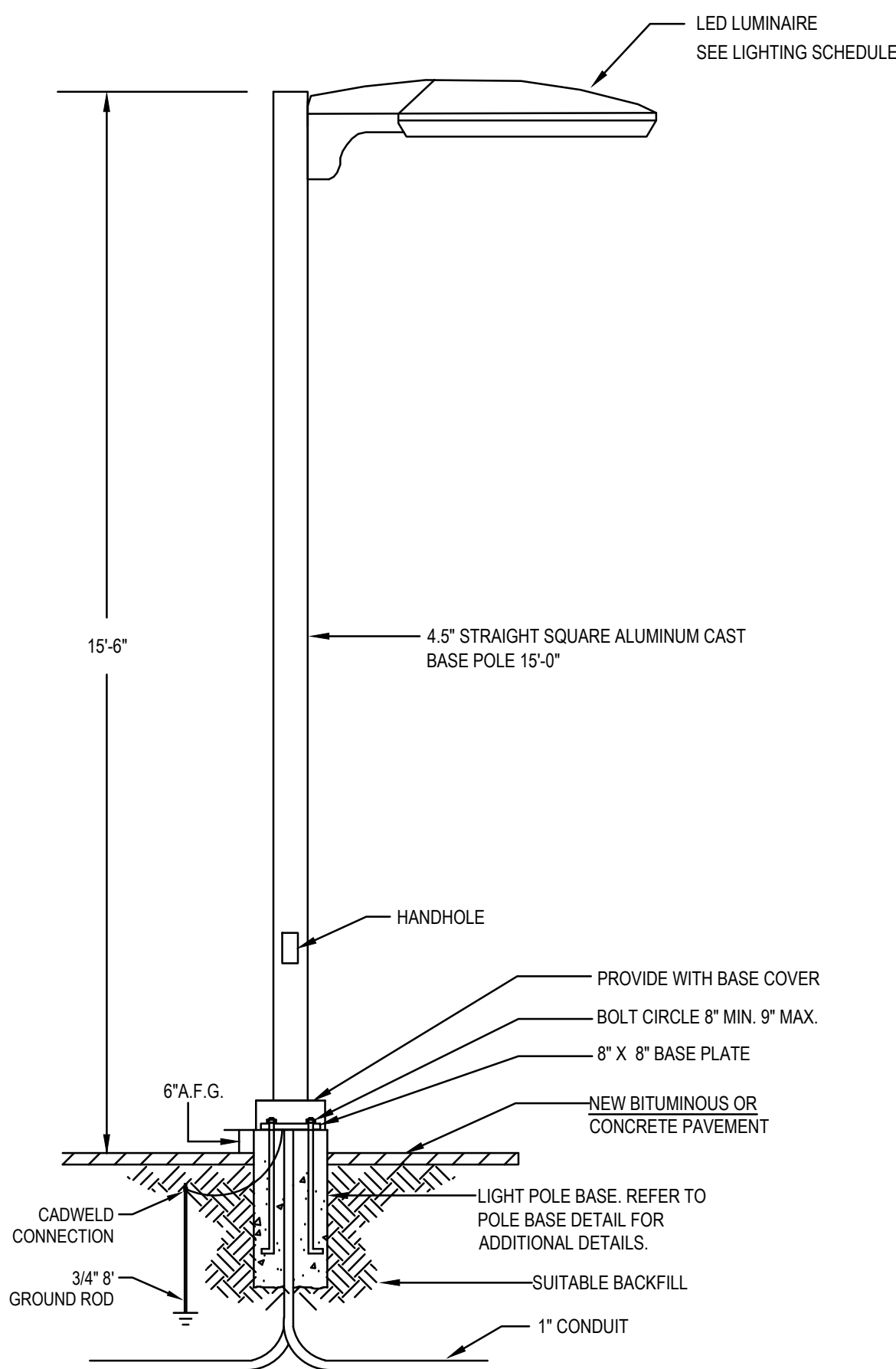
LIGHTING FIXTURE SCHEDULE										
SYMBOL	DESIGNATION	DESCRIPTION	MANUFACTURER/ MODEL NUMBER	LAMP			ELECTRICAL			NOTES
				TYPE	COLOR TEMP	NO	BALLAST	VOLTAGE	WATTS	
SL	SL	SMALL 16 7/8\"/>	BEACON VP-1150L-35-4K8-3-UNV-A-PC	LED	4,000	-	ELECTRONIC	UNV.	36.8	(1) (4)
SW	SW	BUILDING PERIMETER LED COMPACT WALL PACK LIGHT TYPE-3 DISTRIBUTION	HUBBELL TRP2-24L-50-4K8-4-UNV-PC	LED	4,000	-	ELECTRONIC	UNV.	27.9	(1) (4)
SWIEM	SWIEM	SAME AS TYPE SW WITH INTEGRATED EMERGENCY BATTERY PACK AND DUAL DRIVERS	HUBBELL TRP2-24L-50-4K8-4-UNV-PC-EH-2DR	LED	4,000	-	ELECTRONIC	UNV.	27.9	
SWIEM	SWIEM	BUILDING PERIMETER LED COMPACT WALL PACK LIGHT TYPE-3 WITH INTEGRATED EMER. BATTERY PACK AND DUAL DRIVERS	HUBBELL TRP2-24L-50-4K8-3-UNV-PC-EH-2DR	LED	4,000	-	ELECTRONIC	UNV.	27.9	(1) (4)

LIGHTING FIXTURE SCHEDULE

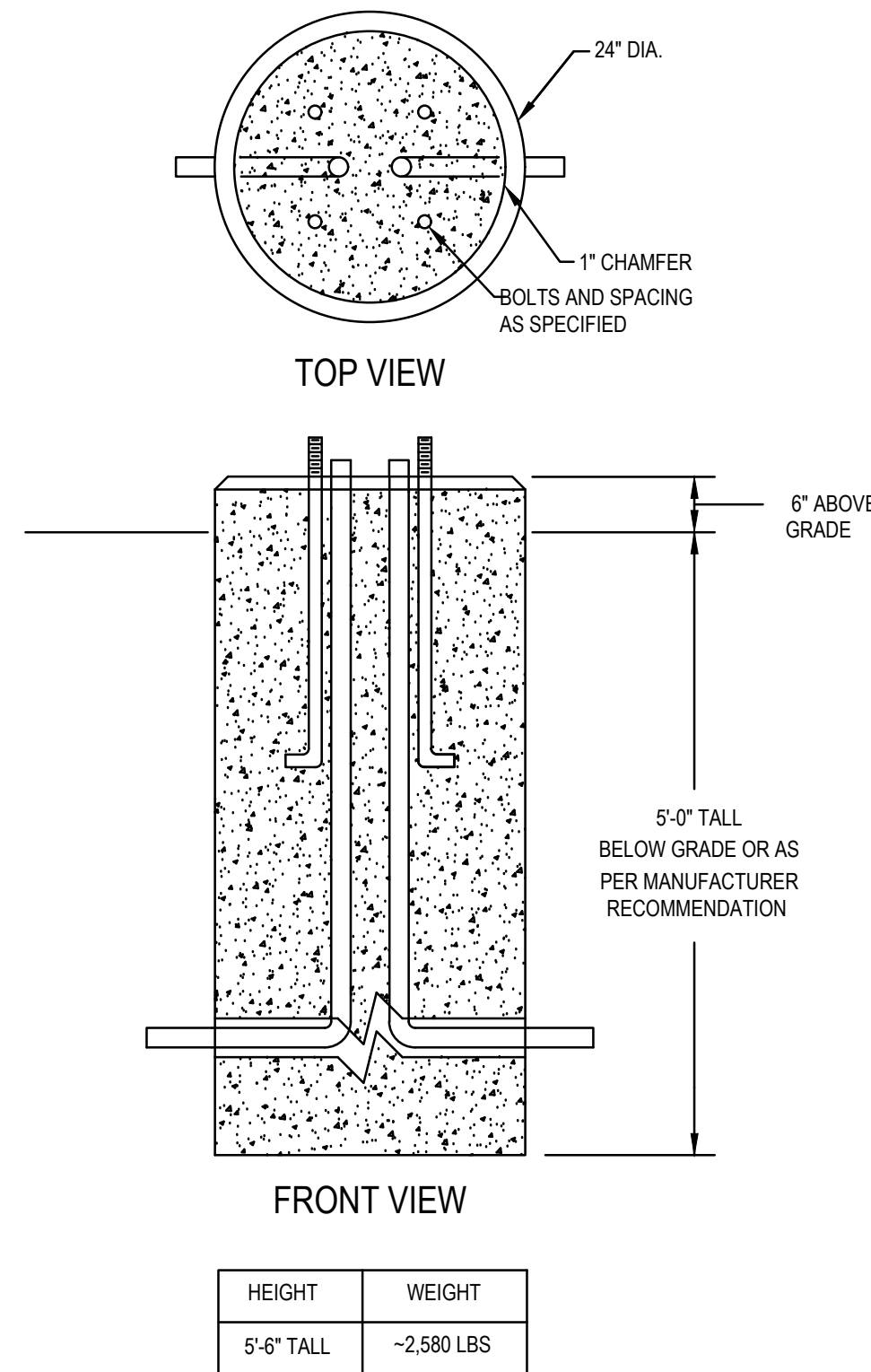
- 1 PROVIDE BACKING PLATE, FOAM GASKET, MOUNTING PLATE, ARM ADAPTER, ALL ASSEMBLY REQUIRED, AND ALL ADDITIONAL MATERIALS AND ACCESSORIES REQUIRED FOR COMPLETE INSTALLATION TO BE FULLY OPERATIONAL.
- 2 ALL FIXTURES SHALL BE CAPABLE OF OPERATING IN COLD TEMP (0\"/>

SYMBOL AND ABBREVIATION:

MH MOUNTING HEIGHT.

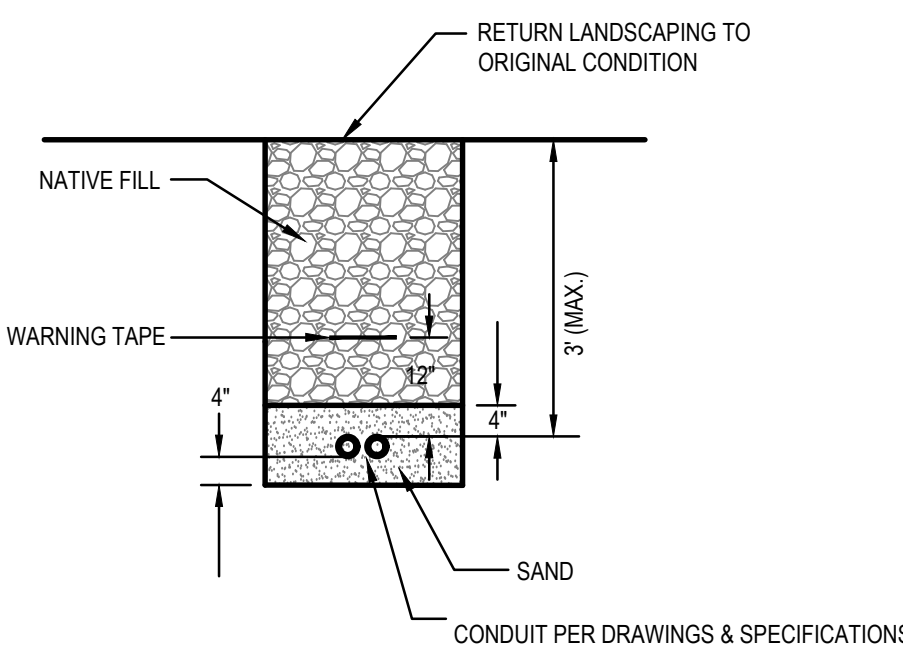


1 POLE MOUNTED LUMINAIRE DETAIL  
NOT TO SCALE

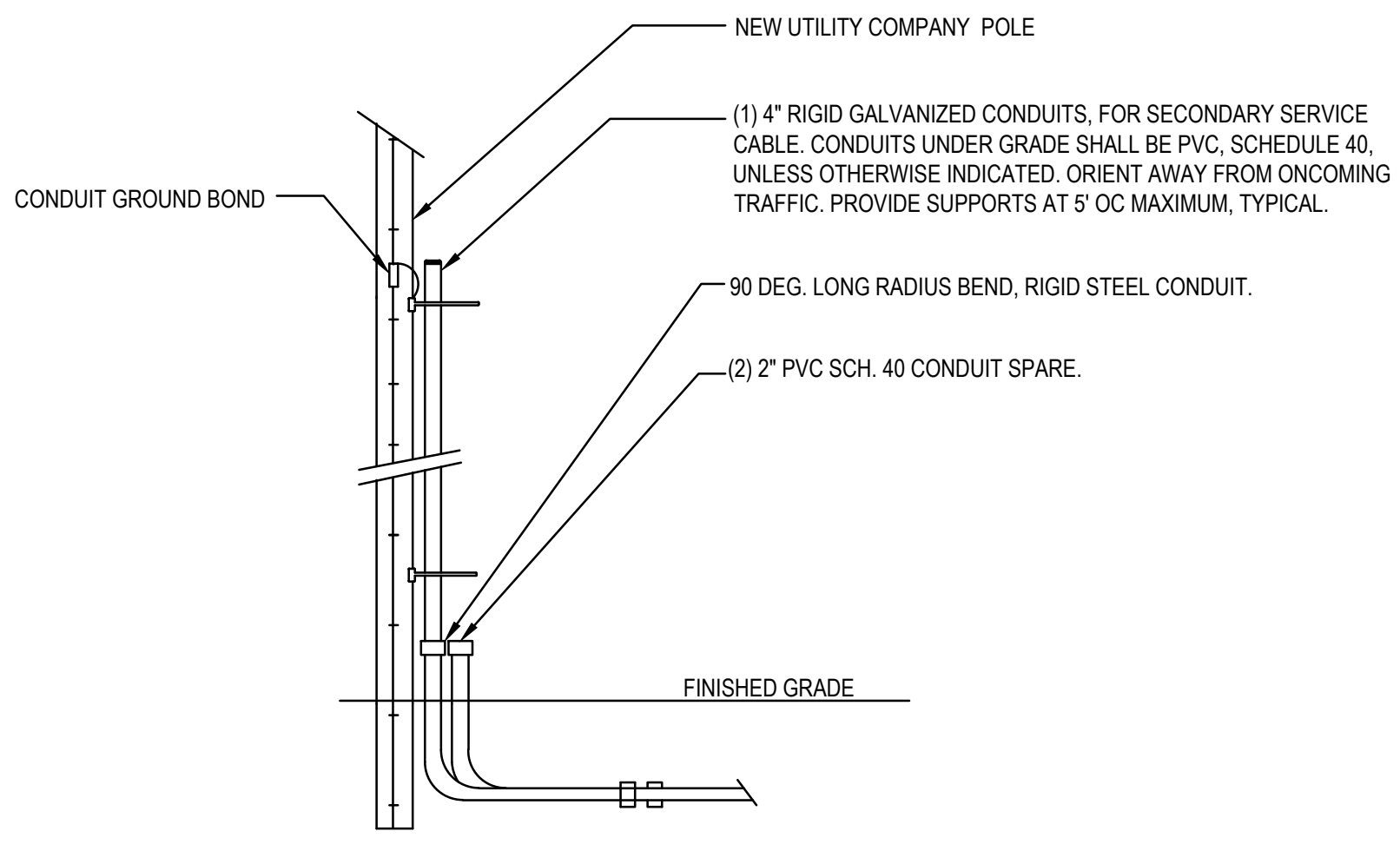


2 LIGHTING POLE BASE DETAIL  
NOT TO SCALE

- DESIGN NOTES:
- 1- CONCRETE 4000 PSI AT 28 DAYS.
  - 2- REINFORCING IS AS SPECIFIED (TYP. 4-#5)  
VERTICALLY AND #3 STIRRUPS 12\"/>



4 TYPICAL TRENCHING AND BACKFILLING DETAIL  
NOT TO SCALE



5 SERVICE POLE DETAILS  
NOT TO SCALE

CALL BEFORE YOU DIG  
1-800-922-4455 OR 811  
CALL NO LESS THAN TWO FULL WORKING DAYS AND NO MORE THAN 30 DAYS  
PRIOR TO START OF EXCAVATION MONDAY THRU FRIDAY, 7AM TO 5PM

Project Title:  
NEW ANIMAL FACILITY AT:  
MONTVILLE ANIMAL SHELTER  
225 Maple Ave. Parcel ID: 077-041-000  
Montville, CT



SILVER PETRUCCELLI + ASSOCIATES  
3190 WHITNEY AVENUE HAMDEN CT 06518  
311 STATE STREET NEW LONDON CT 06320  
203 230 9007 silverpetrucci.com

Revision:	Description:	Date:	Revised By:
	ISSUED FOR BID	09/27/2024	

Drawing Title:  
ELECTRICAL SITE PLAN

Date:  
09/27/2024  
Scale:  
AS NOTED  
Drawn By:  
JRP  
Project Number:  
23.130

ES100

1/19/2022 10:06:22 AM