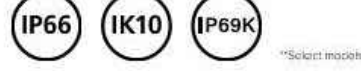


prescolite

LTR-6RD  
LITEISTRY 6" ROUND DOWNLIGHT

FEATURES

- 6" architectural LED downlight delivering 600 – 9000 lm
- Five beam distributions from 0.3 to 11 Spacing Criteria
- Quiet reflector appearance with superior 50% optical cutoff
- 2700K – 5000K, 80+ and 90+ CRI options
- Available for New Construction (non-IC), IC and Chicago Plenum applications
- Variety of dimming protocol options including 0–10V, DALI, DMX, and Lutron EcoSystem
- NX Lighting Controls wired and wireless controls capability available



CONTROLS TECHNOLOGY



SPECIFICATIONS

CONSTRUCTION

- Standard: Non-IC, Chicago Plenum and IC options
- Painted black durable steel platform with pre-installed bar hangers
- Pre-wired junction box with snap-on covers for easy access
- Snap-in connection from driver compartment allows easy installation
- Light Engine connections use plenum rated (CMP) cable

OPTICS

- Visually pleasing 50° cutoff to source and source image
- The light distribution is free of distracting bright spots or pixelation and the perimeter has a smooth transition
- Optical grade silicone lens integral to light engine
- High purity spun aluminum reflector, self-flanged
- Flush Mount flange option with mud-in ring available
- Large selection of anodized finishes and colors
- Painted cones and flange options available

ELECTRICAL

- Chip-on-board LED with 2 SDCM
- Multiple CCTs, 80+ or 90+ CRI
- Long LED life: L90 at >55,000 hours (TM-2)
- Universal voltage 120V–277V driver, 347V optional
- UL Class 2, inherent short circuit and overload protection

ELECTRICAL (CONTINUED)

- Flicker free 0–10V dimming with 1% or <1% performance
- DALI, DMX, and Lutron EcoSystem options
- NX Lighting Controls provides options for standalone and networked functionality with wired or wireless connectivity for NX system deployments
- Lutron Athena control options also available
- Integral and remote controller and battery pack options available
- Refer to additional spec sheets for information on SpectraSync™ Tunable White or DemoWarm or solutions

INSTALLATION

- Accommodates ceiling thickness up to 2" (SL, ML, HL) up to 125° (VL, XL) (See DIMENSIONS section for details)
- Universal adjustable mounting brackets also accept 1/2" RMT conduit or 1/2" or 1/4" tubing channel (By others) or Prescolite accessory bar hangers (#24 or #6)
- Light Engine/Driver fully serviceable from above or below the ceiling

CERTIFICATIONS

- cCSAus certified to UL E98
- For 370L: Merled spacing required 38" fixture center to center, 38" fixture center to building member; 0.5" above fixture
- Suitable for wet locations, covered ceiling, EMI EMI: Suitable for damp locations

DATE: LOCATION:  
TYPE: PROJECT:  
CATALOG #:

LITEISTRY



SERVICE PROGRAMS

STOCK QS10

Typical Dimensions and Weights				
Lumen Package	1/4" Length (inches (mm))	1/4" Width (inches (mm))	1/4" Height (inches (mm))	Weight (lbs (kg))
06L-15L	14.56 (370)	14.36 (365)	5.9 (150)	7.8 (3.5)
25L-35L	14.56 (370)	14.36 (365)	6.68 (170)	8.2 (3.7)
35L-45L	14.56 (370)	14.36 (365)	7.88 (200)	8.8 (4)
50L-60L	14.56 (370)	14.36 (365)	9.28 (235)	9.9 (4.5)
70L-90L	14.56 (370)	14.36 (365)	11.56 (294)	10.14 (4.6)

See DIMENSIONS section for complete details

CERTIFICATIONS (CONTINUED)

- ENEC: Certified under UL 924 standard for emergency lighting and power equipment
- ENEC: Emergency battery packs are California Energy Commission (CEC) Title 20 Compliant
- When used with CE Bezel Trim Accessories: IP66/ IP69K rating, also meets IK10 per IEC 60068-2-75 impact testing
- Approved for 8 1/4 inch out No. 12AWG conductors rated for 90°C through wiring
- ENERGY STAR® certified models available (for list and additional information, visit [www.energystar.gov](http://www.energystar.gov))
- For -BAA Option: This product meets federal procurement law requirements under the Buy American Act (FAR 52.225-9) See [Buy.American.gov](http://Buy.American.gov) Solutions
- For -TAA Option: Product configurations meet federal procurement law requirements under the Trade Agreements Act (FAR 52.225-11) See [Buy.American.gov](http://Buy.American.gov) Solutions

WARRANTY

- 5 year warranty

KEY DATA	
Lumen Range	600–9000
Wattage Range	8–99
Efficacy Range (lm/W)	94–104*
Reported Life (Hours)	L90 / >55,000
Input Current (mA)	65–625 (220V)

\*Based on Specular, 90K, 80 CRI

Current

currentlighting.com/prescolite  
© 2024 HL Solutions, Inc. All rights reserved. Information and specifications subject to change without notice. All values are design or typical values unless measured under laboratory conditions.

Page 1 of 10  
Rev. 10/05/23  
LTR-6RD\_006

EXO  
OUTDOOR LIGHTING

LNC2  
SMALL LED LITEPAK

FEATURES

- 60% more lumens and increased performance than smaller LNC models
- 3000K, 4000K and 5000K as well as Phosphor Converted Amber
- Type II, II and IV distributions available for a variety of application needs
- Quick-mount adapter allows easy installation/maintenance
- 347V and 480V versions for industrial applications and Canada
- Full cut-off, neighbor friendly
- Optional photocontrol for additional energy savings



CONTROL TECHNOLOGY



SPECIFICATIONS

CONSTRUCTION

- Rugged die-cast aluminum housing protects components and provides an architectural appearance
- Casting thermally conducts LED heat to optimize performance and long life
- Powder paint then provides durability in outdoor environments. Tested to meet 1000 hour salt spray rating
- Construction tested to ASTM B117 for 1000 hours of salt spray

OPTICS

- LED optics provide ES type II and IV distributions. Optional (CS) acrylic diffuser available for reduced glare
- L98 at 60,000hrs (Projected per IESNA TM-21-11), see table on page 3 for all values

INSTALLATION

- Quick-mount adapter provides easy installation to wall or to recessed junction boxes (4" square junction box)
- Designed for direct j-box mount
- Optional 1/2" conduit hubs available (standard for control options and battery versions)

DATE: LOCATION:  
TYPE: PROJECT:  
CATALOG #:



SERVICE PROGRAMS

QS10

ELECTRICAL

- 120V-277V universal voltage 50/60Hz 0–10V dimming drivers
- 347V and 480V dimmable driver option available in 25W and 35W configurations
- Minimum operating temperature is –40°C/–40°F
- Drivers have greater than 90 power factor and less than 20% Total Harmonic Distortion
- Driver RoHS and IP66
- 10kA surge protector available as an option
- 3000K CCT nominal, 4000K CCT nominal, 5000K CCT nominal (70 CRI)

CONTROLS

- Universal button photocontrol for use with 120–277V configurations
- Occupancy sensor options available for complete on/off and dimming control
- NX Lighting Controls™ available that feature dimming and occupancy sensor
- Integral Battery Backup provides emergency lighting for the required 90 minute path of egress. Uses 15 watts of power for about 2000 lumens
- Dual Driver option provides 2 drivers within luminaire but only one set of leads exiting the luminaire, where Dual Power Feed provides two drivers which can be wired independently as two sets of leads are extended from the luminaire. Both options can not be included in one fixture.

CERTIFICATIONS

- Listed to UL E98 and CSA C22.2/250.0-24 for wet locations
- DLC® (DesignLights Consortium Qualified), with some Premium Qualified configurations. Not all product variations on this page are DLC Qualified. Refer to <http://www.designlights.org> for the most up-to-date list
- Fixture is IP65 rated

WARRANTY

- 5 year warranty

KEY DATA	
Lumen Range	1000–5600
Wattage Range	10–45
Efficacy Range (lm/W)	108–124
Weights lbs. (kg)	9/6 (24/5)

Current

currentlighting.com/exo  
© 2024 HL Solutions, Inc. All rights reserved. Information and specifications subject to change without notice. All values are design or typical values unless measured under laboratory conditions.

Page 1 of 6  
Rev. 05/07/24  
EXO\_LNC2\_spec\_007

2 BUILDING MOUNTED LIGHT (WL3)  
SCALE: NTS

1 WALL MOUNTED LIGHT (WL1C)  
SCALE: NTS

MDLA

MICHAEL D'ANGELO  
LANDSCAPE ARCHITECTURE LLC

119 GRISWOLD STREET  
SUITE 209  
GLASTONBURY, CT 06033  
T. 203.592.4788  
www.md-la.com

HORIZON VIEW  
MONTVILLE, CT

STAMP



REV. NO.	DATE	DESCRIPTION
	9/25/24	INLAND WETLANDS SUBMISSION
	12/2/24	RESPONSE TO FIRE MARSHALL COMMENTS

LANDSCAPE  
DETAILS  
PLAN

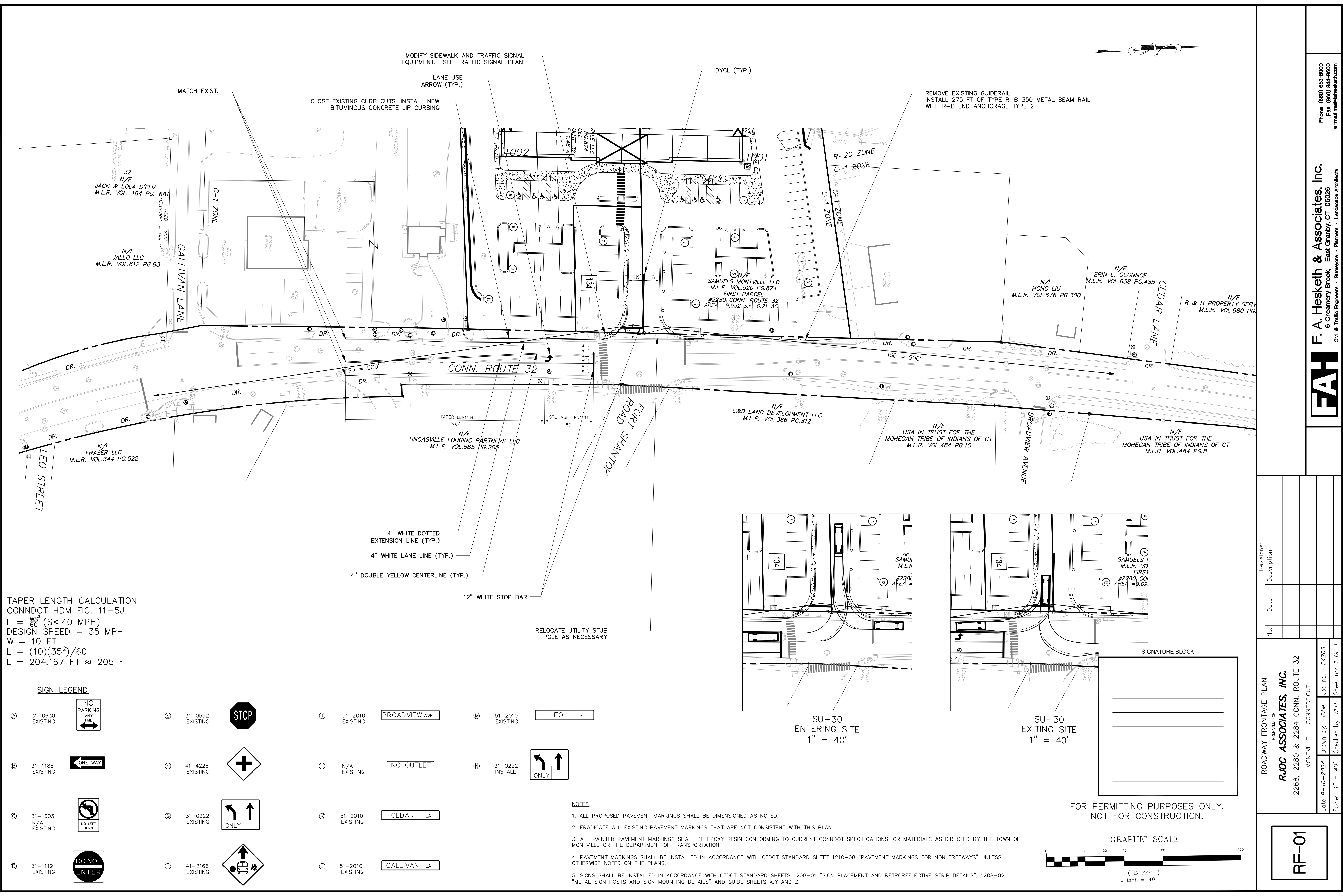
DRAWN:  
MR. CB  
CHECKED:  
MR.  
SCALE:  
AS NOTED  
DATE:  
09/25/24

L302

SHEET 6 OF 6

NOT FOR CONSTRUCTION

plot date: 12/3/2024



TAPER LENGTH CALCULATION  
CONNDOT HDM FIG. 11-5J  
 $L = \frac{WS^2}{60}$  (S < 40 MPH)  
DESIGN SPEED = 35 MPH  
W = 10 FT  
 $L = \frac{(10)(35^2)}{60}$   
L = 204.167 FT  $\approx$  205 FT

**SIGN LEGEND**

Ⓐ 31-0630 EXISTING

Ⓒ 31-1188 EXISTING

Ⓓ 31-1603 N/A EXISTING

Ⓔ 31-1119 EXISTING

Ⓔ 31-0552 EXISTING

Ⓕ 41-4226 EXISTING

Ⓖ 31-0222 EXISTING

Ⓗ 41-2166 EXISTING

Ⓜ 51-2010 EXISTING

BROADVIEW AVE

Ⓜ 51-2010 EXISTING

LEO ST

Ⓜ 51-2010 EXISTING

NO OUTLET

Ⓜ 51-2010 EXISTING

CEDAR LA

Ⓜ 51-2010 EXISTING

GALLIVAN LA

Ⓜ 51-2010 EXISTING

51-2010 EXISTING

Ⓜ 51-2010 EXISTING

51-2022 INSTALL

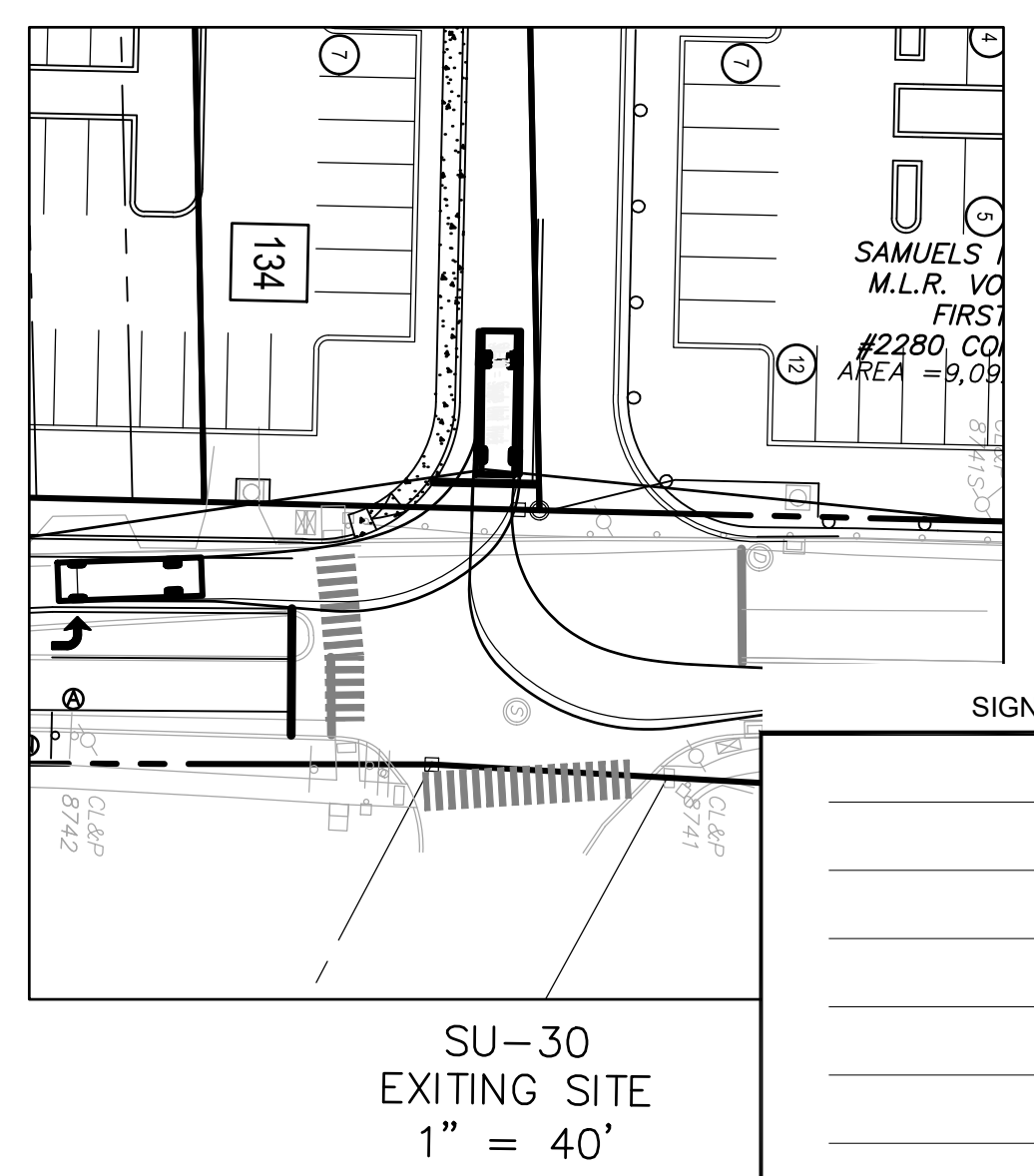
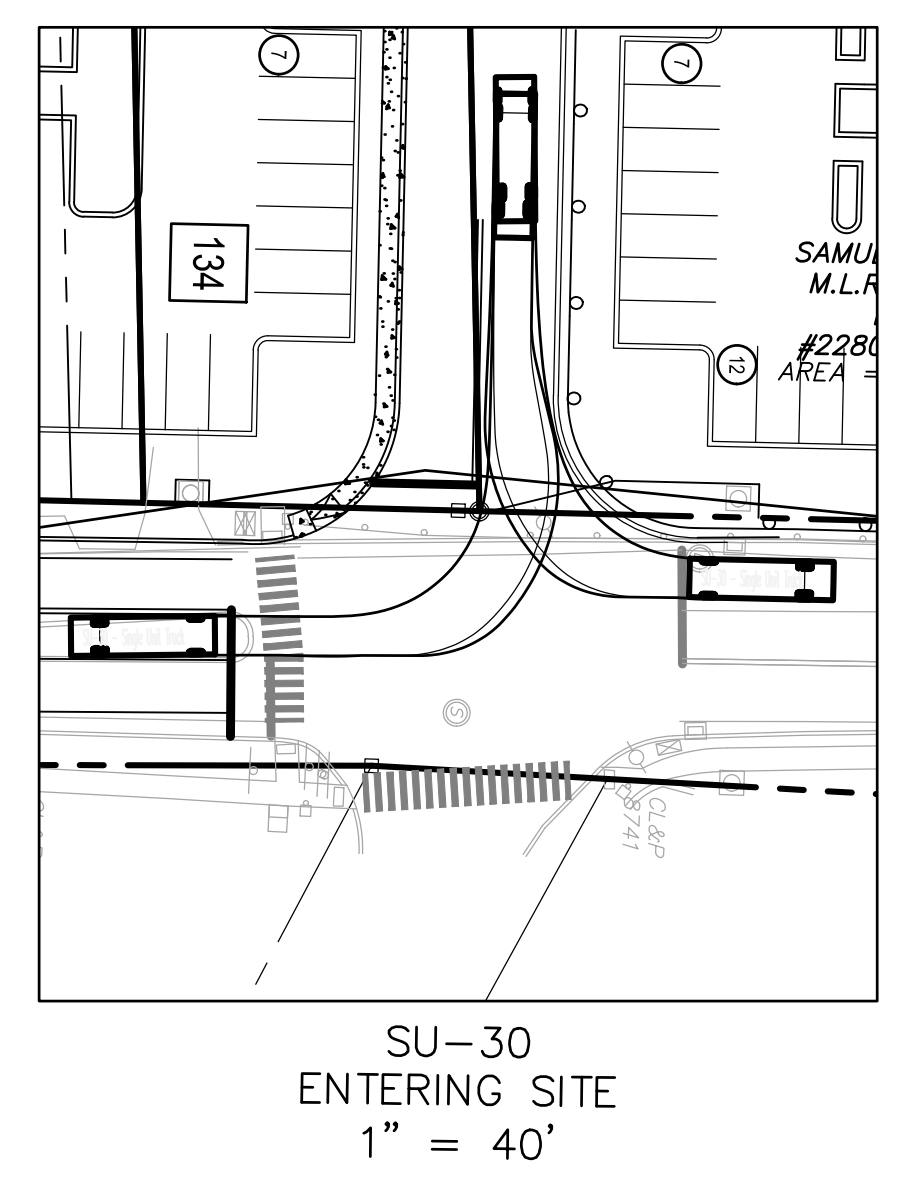
Ⓜ 51-2010 EXISTING

51-2010 EXISTING

Ⓜ 51-2010 EXISTING

51-2010 EXISTING

- NOTES**
- ALL PROPOSED PAVEMENT MARKINGS SHALL BE DIMENSIONED AS NOTED.
  - ERADICATE ALL EXISTING PAVEMENT MARKINGS THAT ARE NOT CONSISTENT WITH THIS PLAN.
  - ALL PAINTED PAVEMENT MARKINGS SHALL BE EPOXY RESIN CONFORMING TO CURRENT CONNDOT SPECIFICATIONS, OR MATERIALS AS DIRECTED BY THE TOWN OF MONTVILLE OR THE DEPARTMENT OF TRANSPORTATION.
  - PAVEMENT MARKINGS SHALL BE INSTALLED IN ACCORDANCE WITH CTDOT STANDARD SHEET 1210-08 "PAVEMENT MARKINGS FOR NON FREEWAYS" UNLESS OTHERWISE NOTED ON THE PLANS.
  - SIGNS SHALL BE INSTALLED IN ACCORDANCE WITH CTDOT STANDARD SHEETS 1208-01 "SIGN PLACEMENT AND RETROREFLECTIVE STRIP DETAILS", 1208-02 "METAL SIGN POSTS AND SIGN MOUNTING DETAILS" AND GUIDE SHEETS X,Y AND Z.



SIGNATURE BLOCK

FOR PERMITTING PURPOSES ONLY.  
NOT FOR CONSTRUCTION.

GRAPHIC SCALE

( IN FEET )  
1 inch = 40 ft.

Revisions:

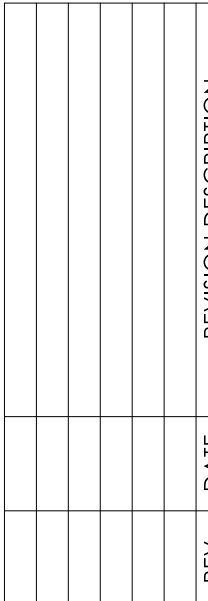
No.	Date	Description

ROADWAY FRONTAGE PLAN  
PREPARED FOR  
**RJOC ASSOCIATES, INC.**  
2268, 2280 & 2284 CONN. ROUTE 32  
MONTVILLE, CONNECTICUT

RF-01

F. A. Hesketh & Associates, Inc.  
6 Creamery Brook, East Granby, CT 06026  
Civil & Traffic Engineers • Planners • Landscape Architects

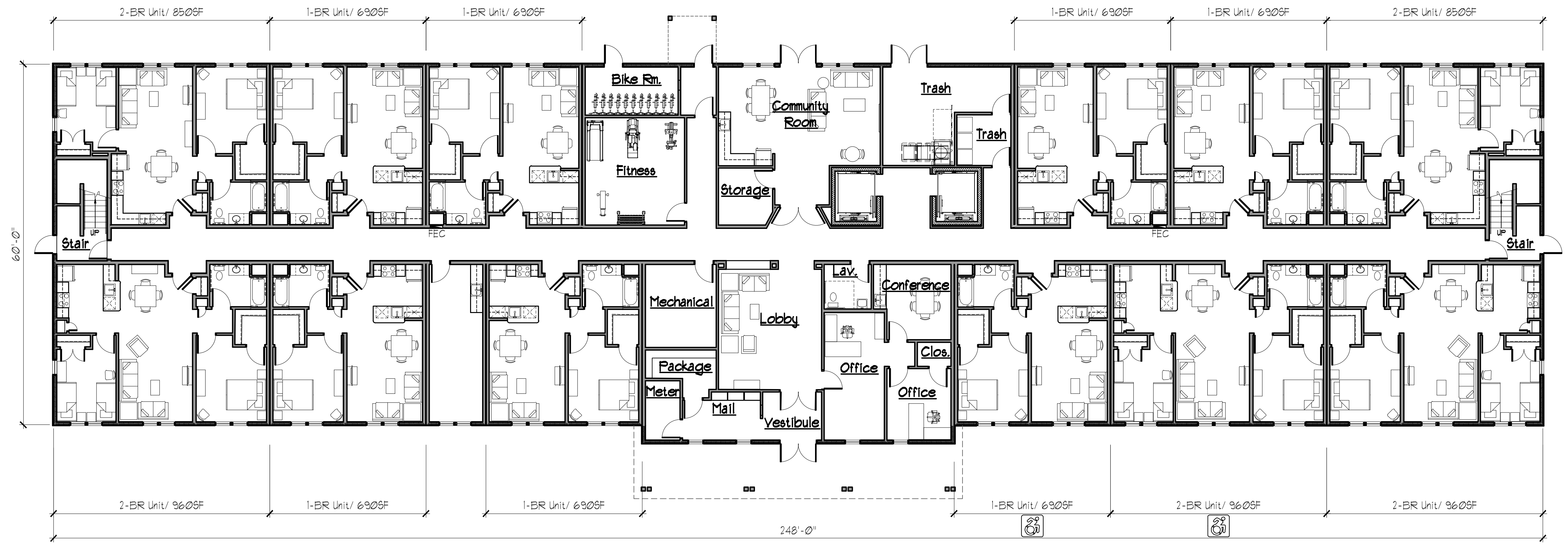
Phone (860) 883-8000  
Fax (860) 844-8600  
e-mail: fah@fahinc.com





2 TYPICAL FLOOR PLAN (FLOORS 2-3)  
SCALE: 3/32"=1'-0"  
NORTH

PROJECT SUMMARY					
Floor	Description	Unit Mix			SF. (Gross)
		1-Br.	2-Br.	Total	
1	First Floor	1	5	12	15,031 SF.
2	Second Floor	6	9	15	15,031 SF.
3	Third Floor	6	9	15	15,031 SF.
4	Fourth Floor	6	9	15	15,031 SF.
Totals		25	32	57	60,148 SF



1 FIRST FLOOR PLAN  
SCALE: 3/32"=1'-0"  
NORTH

SIGNATURE BLOCK

Crosskey Architects  
LLC  
Architecture Preservation Planning  
750 Main Street, Hartford, CT 06103  
T: (860)724-3000 F: (860)724-3013

Horizon View  
Route 32, Montville, CT

Honeycomb Real Estate Partners  
Avon, CT

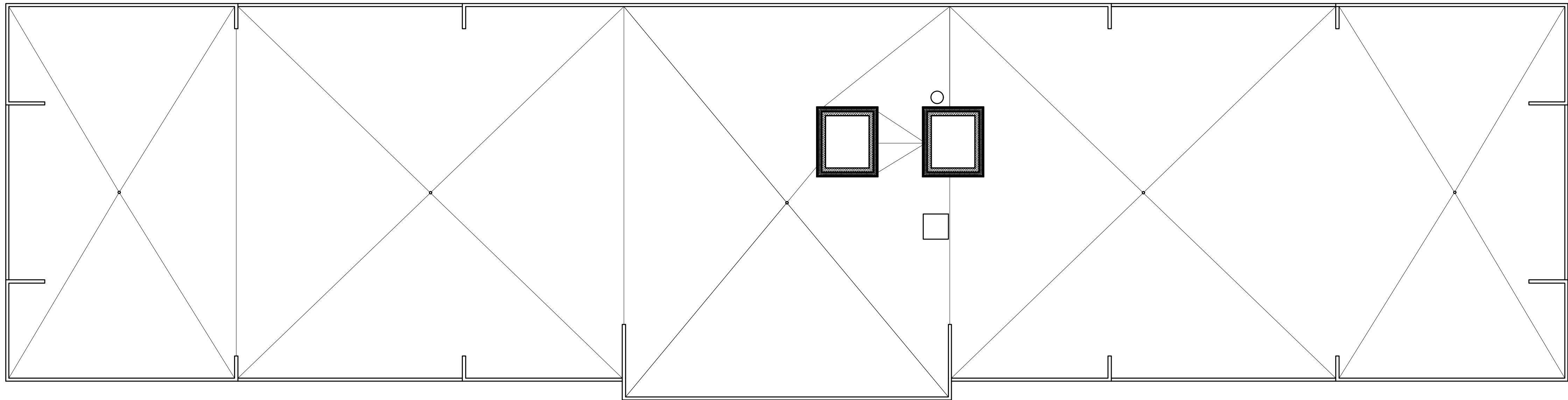
P&Z Submission  
NOT FOR  
CONSTRUCTION

Drawn: JC  
Date: October 9, 2024  
Revisions

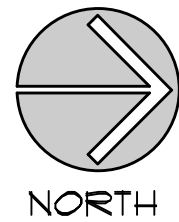
First and Typical  
(2nd/3rd) Floor  
Plans

PZ-1

Copyright © 2024



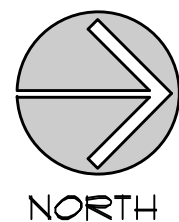
2 ROOF PLAN  
SCALE: 3/32"=1'-0"



PROJECT SUMMARY					
Floor	Description	Unit Mix			SF. (Gross)
		1-Br.	2-Br.	Total	
1	First Floor	1	5	12	15,031 SF.
2	Second Floor	6	9	15	15,031 SF.
3	Third Floor	6	9	15	15,031 SF.
4	Fourth Floor	6	9	15	15,031 SF.
Totals		25	32	57	60,148 SF

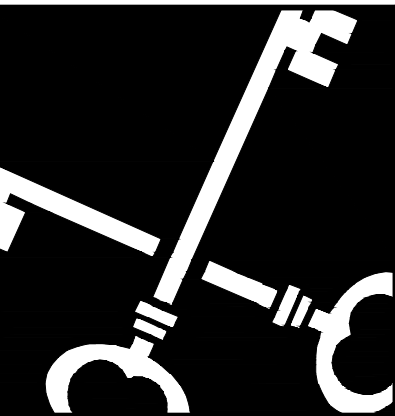


1 FOURTH FLOOR PLAN  
SCALE: 3/32"=1'-0"

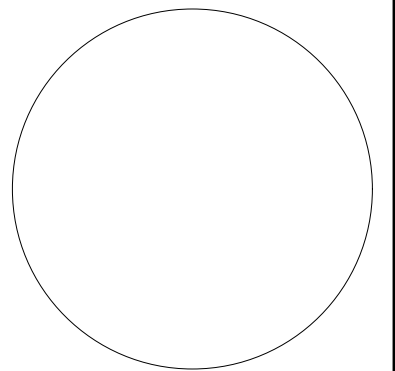


SIGNATURE BLOCK

\_\_\_\_\_  
\_\_\_\_\_  
\_\_\_\_\_  
\_\_\_\_\_  
\_\_\_\_\_  
\_\_\_\_\_  
\_\_\_\_\_  
\_\_\_\_\_



Crosskey  
Architects  
LLC  
Architecture Preservation Planning  
750 Main Street, Hartford, CT 06103  
T: (860)724-3000 F: (860)724-3013



Horizon View  
Route 32, Montville, CT  
Honeycomb Real Estate Partners  
Avon, CT

P&Z Submission  
NOT FOR  
CONSTRUCTION

Drawn: JC  
Date: October 9, 2024  
Revisions  
\_\_\_\_\_  
\_\_\_\_\_  
\_\_\_\_\_  
\_\_\_\_\_

First Floor & Roof  
Plan

PZ-2

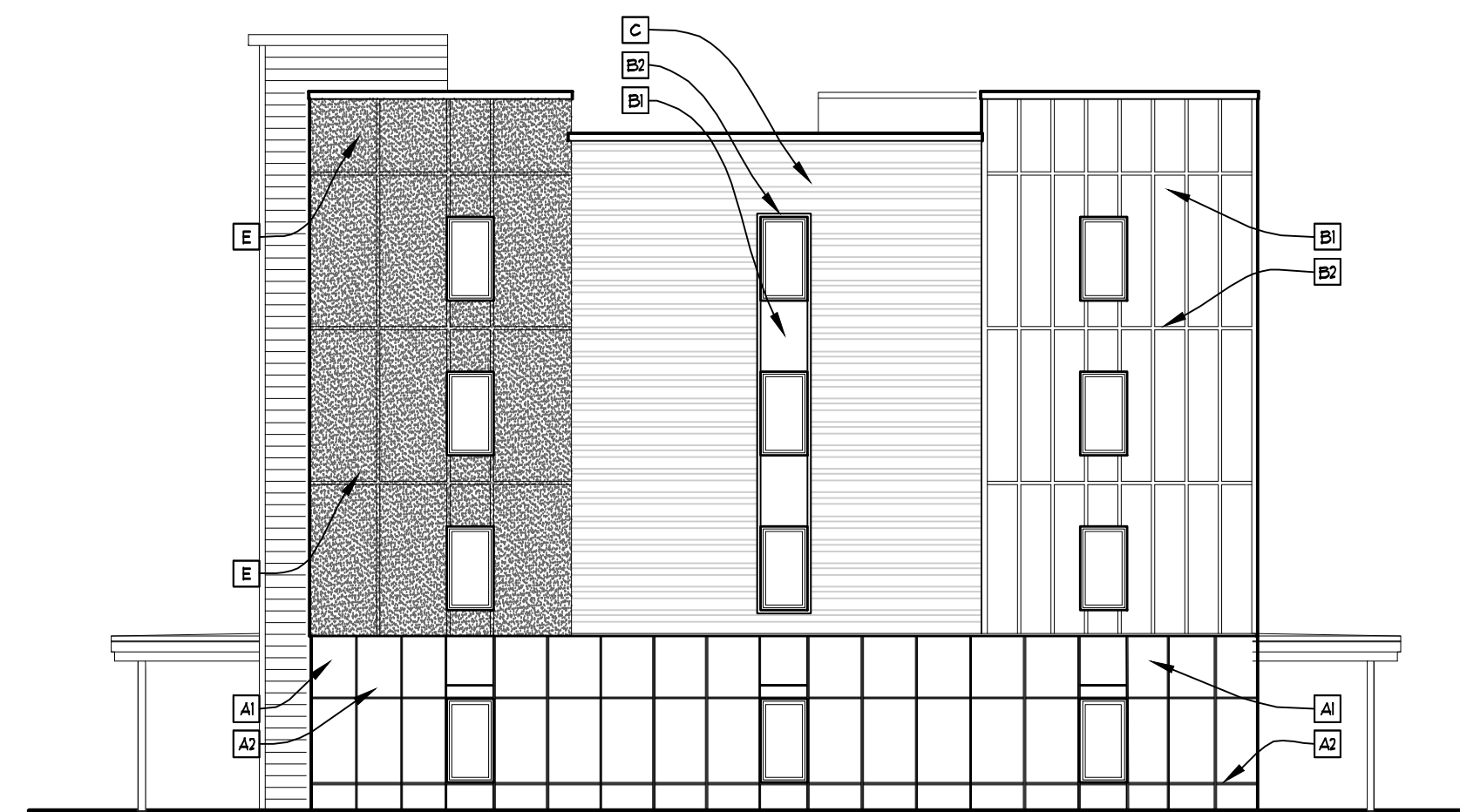
Copyright © 2024



4 REAR (WEST) ELEVATION  
SCALE: 3/32"=1'-0"

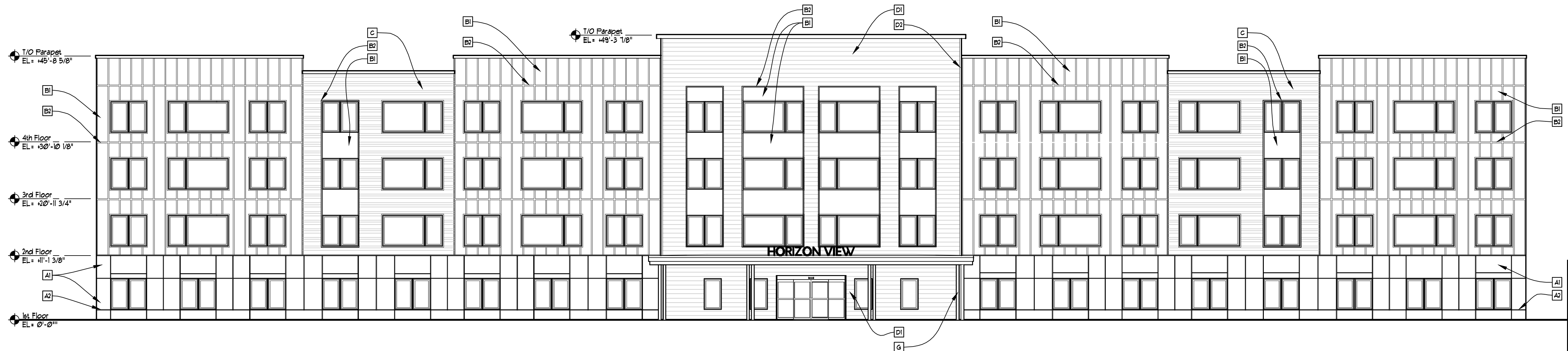


2 RIGHT (NORTH) ELEVATION  
SCALE: 3/32"=1'-0"



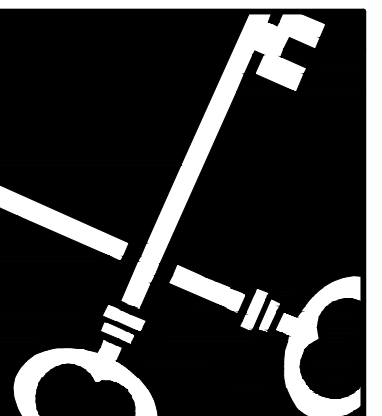
3 LEFT (SOUTH) ELEVATION  
SCALE: 3/32"=1'-0"

- ELEVATION MATERIAL KEY NOTES:**
- A1 Fiber Cement Panels- Color Type 1
  - A2 Metal Reveal Trim
  - B1 Fiber Cement Panels- Color Type 2
  - B2 Fiber Cement Trim- Color Type 2
  - C Fiber Cement Lap Siding (4", 5", 9" to weather)- Color Type 3
  - D1 Fiber Cement Lap Siding (4" to weather)- Color Type 4
  - D2 Fiber Cement Trim- Color Type 4
  - E Exterior Insulation & Finish System- Color Type 5
  - F Exterior Insulation & Finish System- Color Type 6
  - G 6" x 6" Wood Column- Color Type 1



1 FRONT (EAST) ELEVATION  
SCALE: 3/32"=1'-0"

SIGNATURE BLOCK



Crosskey  
Architects  
LLC  
Architecture Preservation Planning  
750 Main Street, Hartford, CT 06103  
T: (860)724-3000 F: (860)724-3013

Horizon View  
Route 32, Montville, CT  
Honeycomb Real Estate Partners  
Avon, CT

P&Z Submission  
NOT FOR  
CONSTRUCTION

Drawn: JC  
Date: October 9, 2024  
Revisions

Exterior  
Elevations

PZ-3

Copyright © 2024