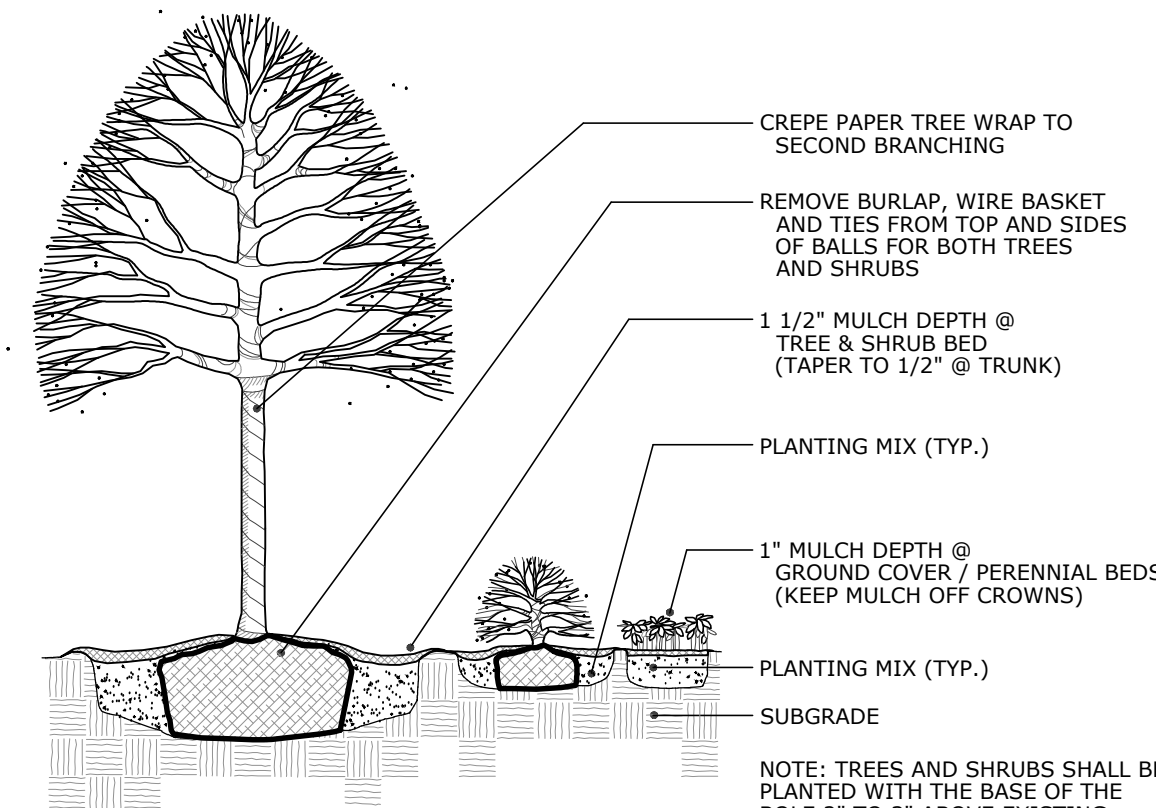


V:\CT\MONTVILLE\ROUTE 32-1758\1758 RTE 32 - LLC - 66464\LANDSCAPE\LANDSCAPE PLAN.DWG, Tab: LANDSCAPE PLAN, Saved: 10/29/2024 2:10 PM by: GSA658488, Printed: 12/02/2024 1:59 PM



Planting Detail - Typ.  
Not to Scale

- GENERAL NOTES PLANTING:**
- AS CONSTRUCTION PROCEEDS, FINE GRADE AND SEED OR SOD AS SOON AS POSSIBLE TO REDUCE RUNOFF.
  - ALL DISTURBED AREAS NOT COVERED BY BUILDING, PAVING, PLANTING BEDS OR OTHER IMPROVEMENTS SHALL BE GRADED, TOPSOILED TO A DEPTH OF 6" AND SEEDED. PLANT BEDS SHALL BE TOPSOILED TO A DEPTH OF 12".
  - IN ALL SHRUB BEDS TO RECEIVE MASS PLANTING, PROVIDE PINE BARK MULCH AS DETAILED. ESTABLISH A NEAT, SMOOTH EDGE BETWEEN MULCH AND LAWN.
  - ADJUSTMENTS IN THE LOCATIONS OF PLANT MATERIALS MAY BE NECESSARY DUE TO LOCATIONS OF UTILITIES. ADJUSTMENTS SHALL BE APPROVED BY THE OWNER'S REPRESENTATIVE.
  - PROVIDE AND INSTALL ALL PLANTS SHOWN ON THE PLANTING PLAN DRAWINGS; THE QUANTITIES IN THE PLANT LIST ARE PROVIDED FOR THE CONTRACTOR'S CONVENIENCE ONLY. IF DISCREPANCIES OCCUR, THE DRAWING SYMBOLS PREVAIL OVER THE PLANT LIST QUANTITIES.

KEY	QTY.	TECHNICAL NAME	COMMON NAME	SIZE	COND.
DECIDUOUS TREES					
ARA	11	ACER RUBRUM 'ARMSTRONG'	ARMSTRONG RED MAPLE	3"-3.5" CAL.	B&B
AOG	19	ACER RUBRUM 'OCTOBER GLORY'	OCTOBER GLORY RED MAPLE	3"-3.5" CAL.	B&B
AGN	20	ACER SACCHARUM 'GREEN MOUNTAIN'	GREEN MOUNTAIN SUGAR MAPLE	3"-3.5" CAL.	B&B
GTS	15	GLEDITSIA TRIACANTHOS 'SHADEMASTER'	SHADEMASTER HONEYLOCUST	3"-3.5" CAL.	B&B
KD	12	CORNUS KOUSA	KOUSA DOGWOOD	2"-2.5" CAL.	B&B
CCD	13	CORNUS 'RUTCAN'	CONSTELLATION DOGWOOD	2"-2.5" CAL.	B&B
CSP	15	CORNUS 'RUTCAN'	STELLAR PINK DOGWOOD	2"-2.5" CAL.	B&B
MLM	7	MAGNOLIA LOEBNERI 'LEONARD MESSEL'	LEONARD MESSEL MAGNOLIA	2"-2.5" CAL.	B&B
PPP	6	PRUNUS CERASIFERA 'THUNDERCLOUD'	PURPLELEAF PLUM	2"-2.5" CAL.	B&B
EVERGREEN TREES					
NS	19	PICEA ABIES	NORWAY SPRUCE	6'-8" HT.	B&B
PSS	25	PICEA OMORICA	SERBIAN SPRUCE	6'-8" HT.	B&B
PDF	15	PSEUDOTSUGA MENZIESII	DOUGLAS FIR	6'-8" HT.	B&B
TOS	14	THUJA OCCIDENTALIS 'SMARAGD'	EMERALD GREENARBORVITAE	6'-8" HT.	B&B
TCH	16	TSUGA CANADENSIS	CANADIAN HEMLOCK	6'-8" HT.	B&B



THE CONTRACTOR IS RESPONSIBLE FOR LOCATING ALL UTILITIES IN THE FIELD BEFORE BEGINNING ANY EXCAVATION. CALL AT LEAST 72 HOURS IN ADVANCE FROM ANYWHERE IN THE STATE OF CONNECTICUT, "CALL BEFORE YOU DIG": 1-800-922-4455

APPROVED BY THE MONTVILLE PLANNING AND ZONING COMMISSION ON APPROVAL EXPIRES FIVE (5) YEARS FROM APPROVAL DATE  
CHAIRMAN/SECRETARY \_\_\_\_\_ DATE \_\_\_\_\_

STAMP

**Loureiro**  
Engineers • Architects • Planners • Energy  
15 Thames Street, Suite 211  
Phone: 860-448-0999  
An Employee Owned Company • www.loureiro.com  
© Loureiro, Inc. All Rights Reserved 2024

SCALE

1"=40'

064MC4.01

DATE

10/29/2024

DATE

10/29/2024

DRAWN BY

ESF

APPROVED BY

GFA

LANDSCAPE PLAN

SHANTOK VILLAGE  
1758 ROUTE 32, MONTVILLE, CT 06382  
1758 RTE 32, LLC  
24 MAIN STREET, CENTERBROOK, CT 06409

REVISIONS

REV.	DATE	DESCRIPTION OF REVISION
1	11/12/2024	PER STAFF TECHNICAL REVIEW COMMENTS
2	12/02/2024	PER REVIEW COMMENT LETTERS

SHEET NO.

13

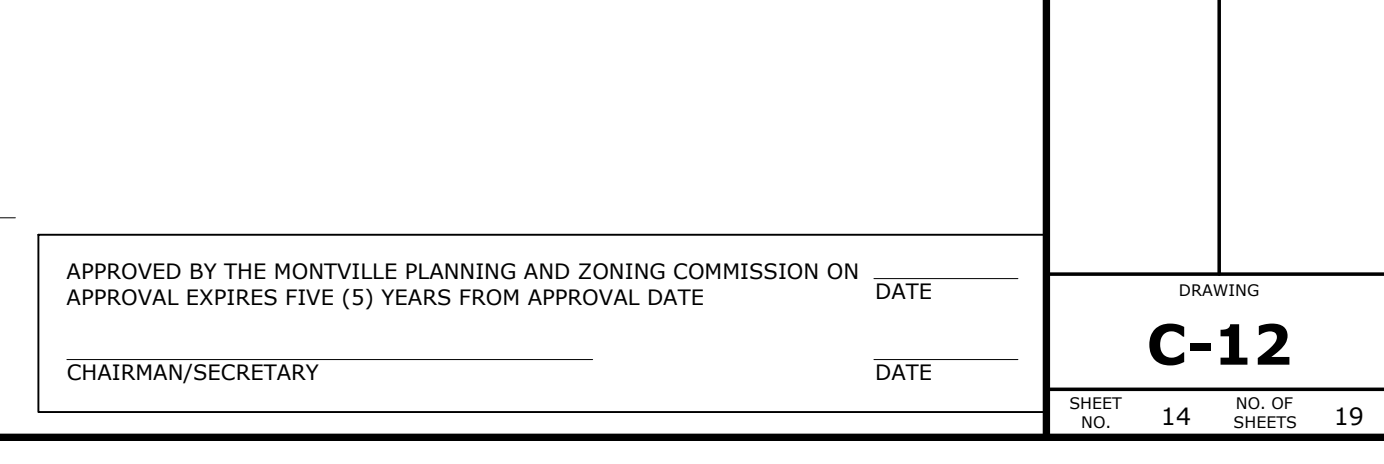
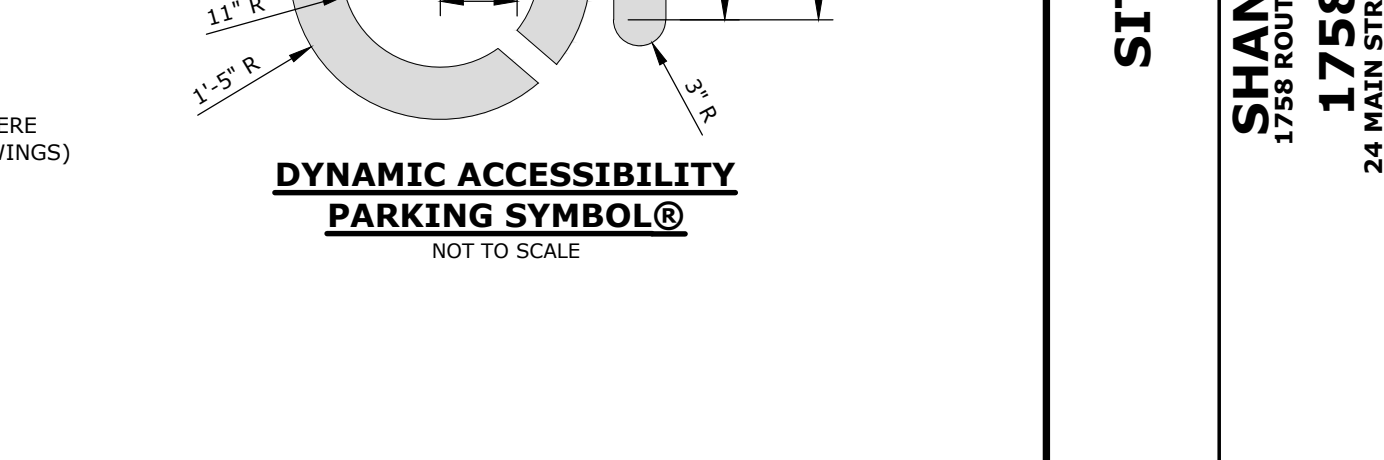
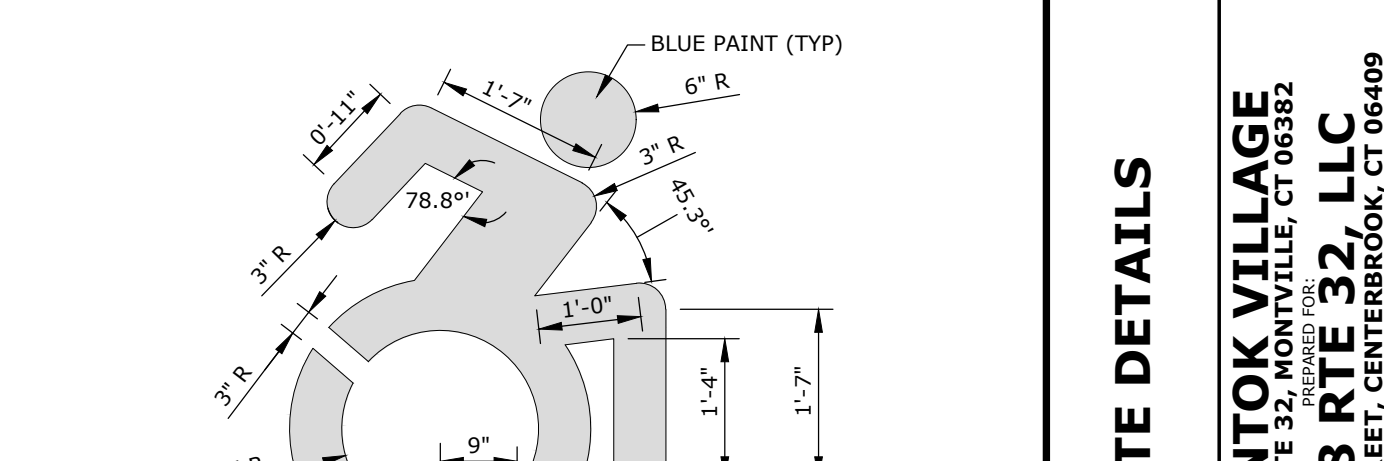
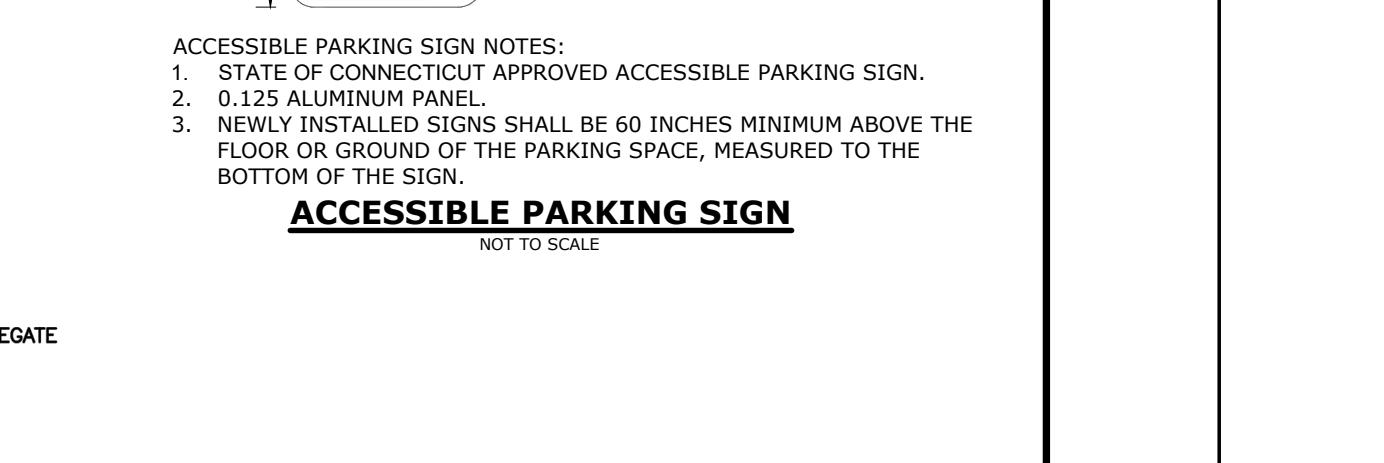
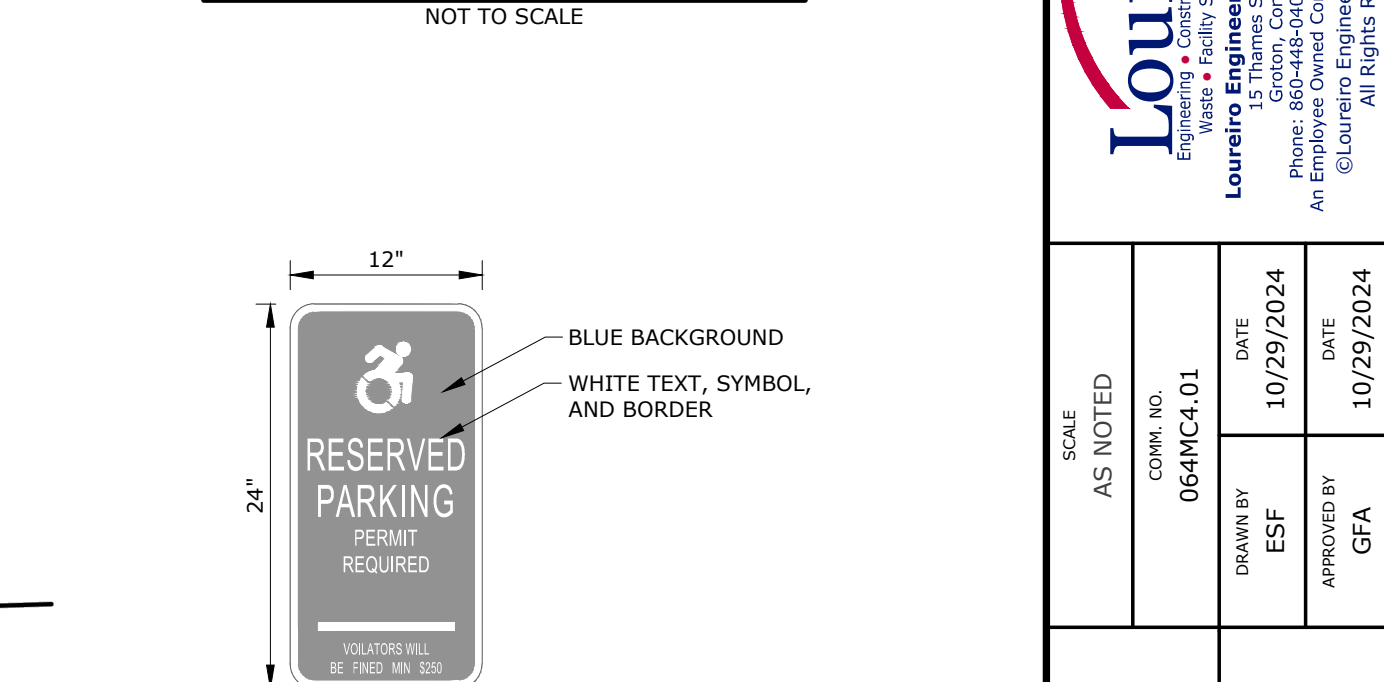
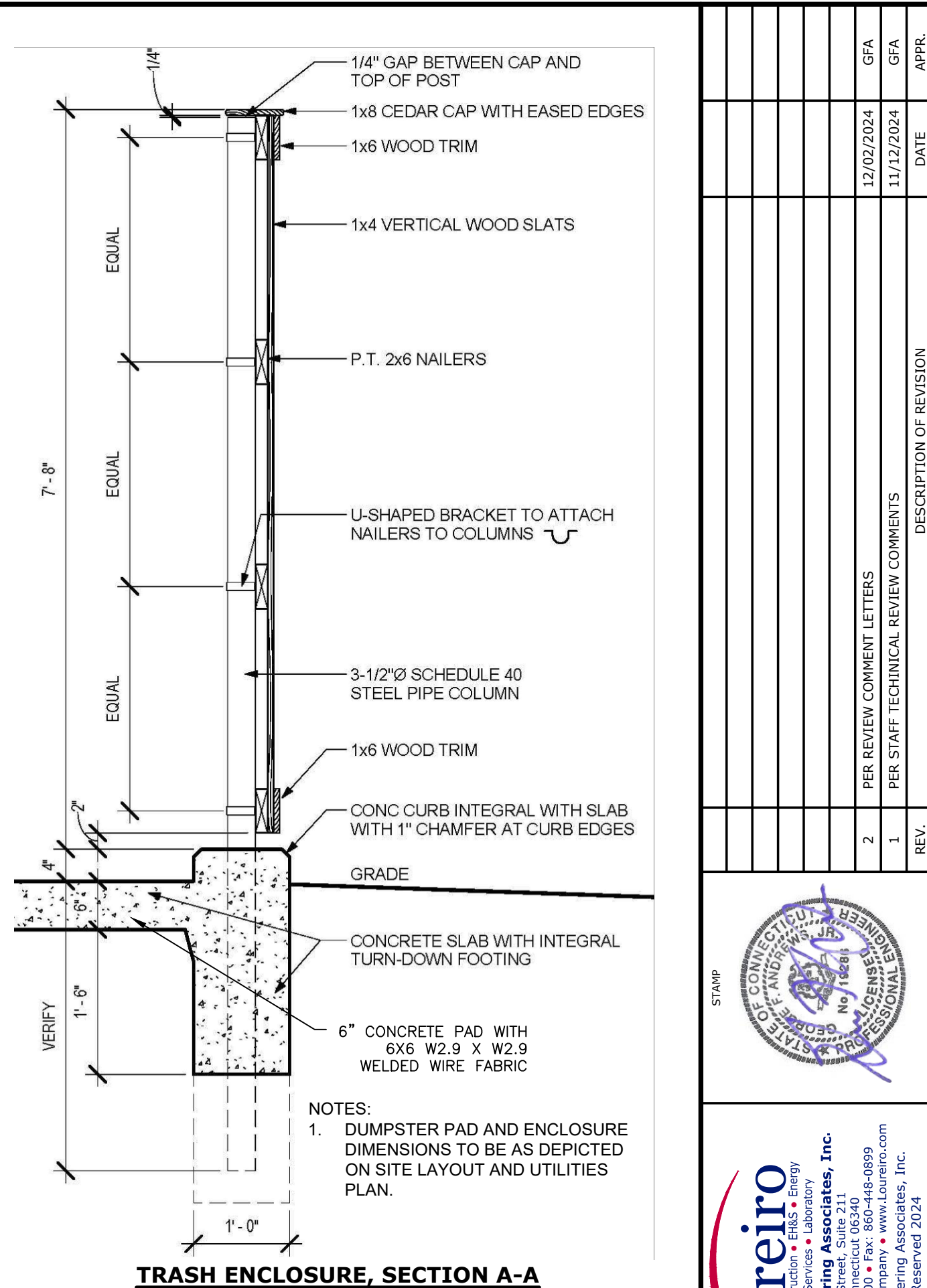
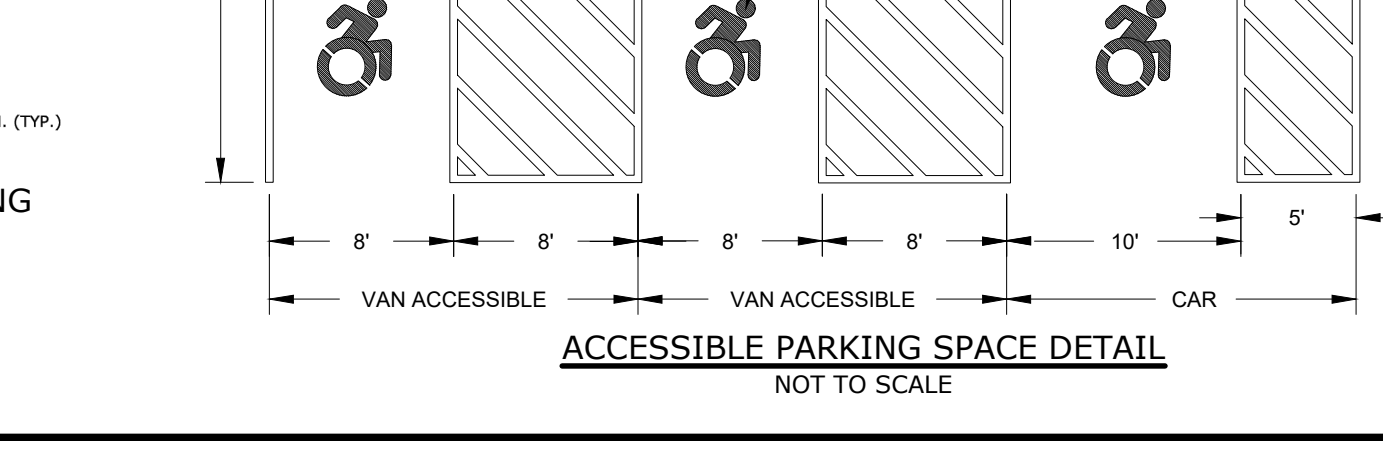
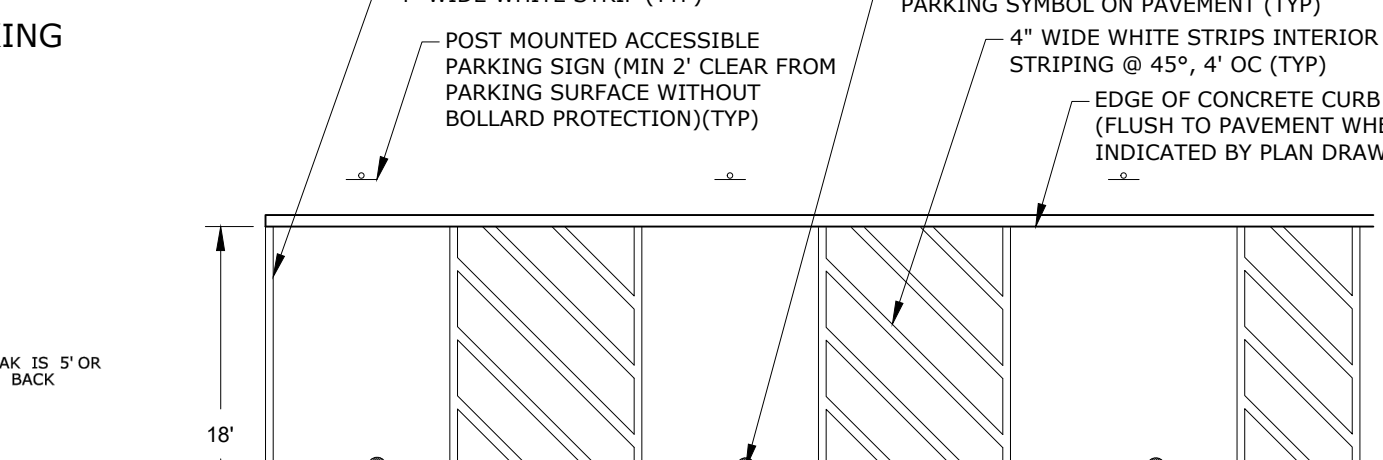
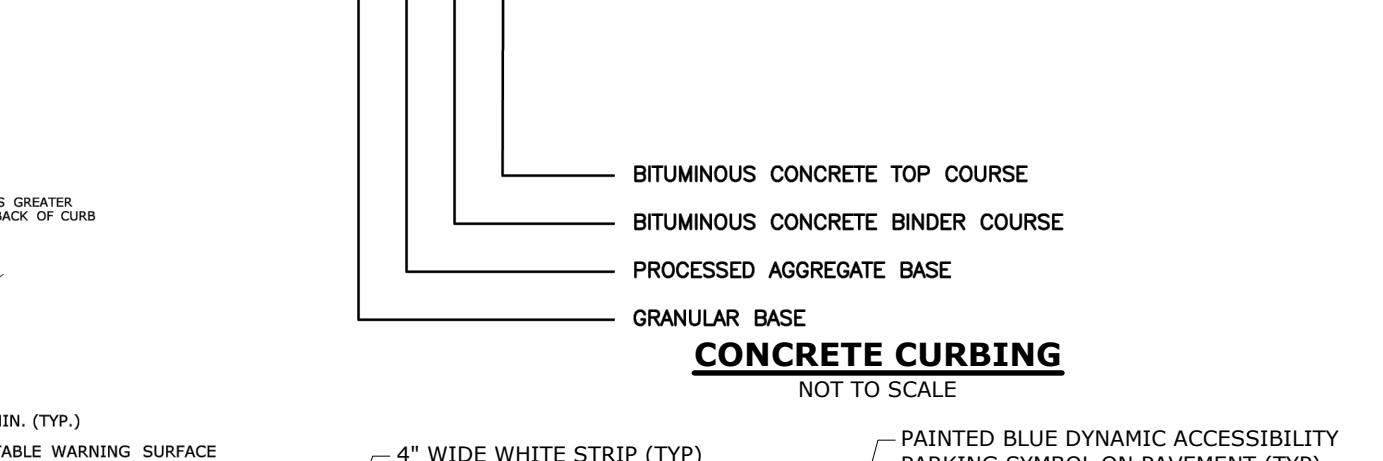
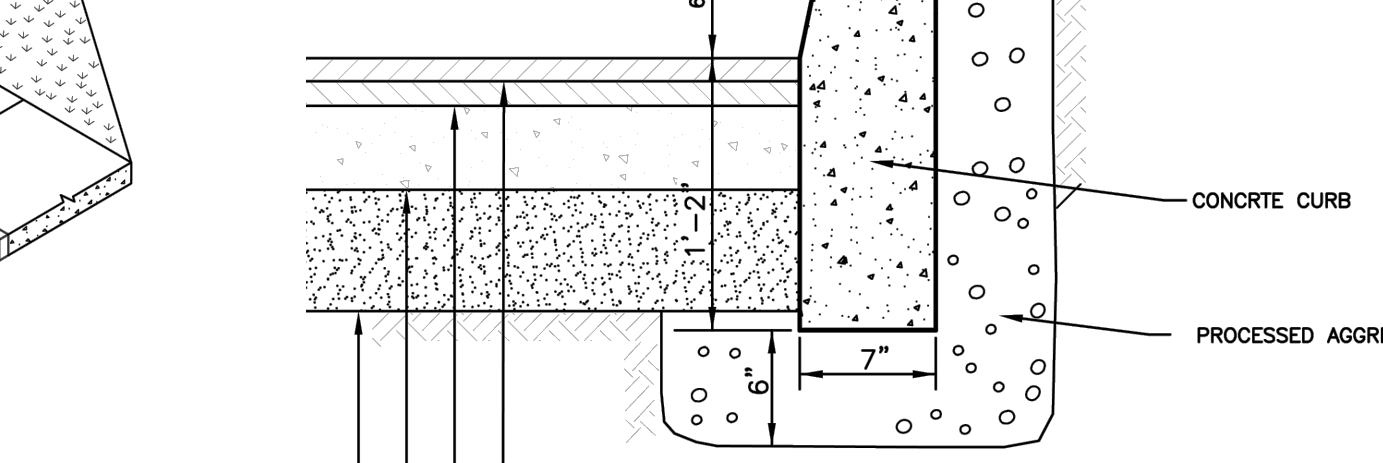
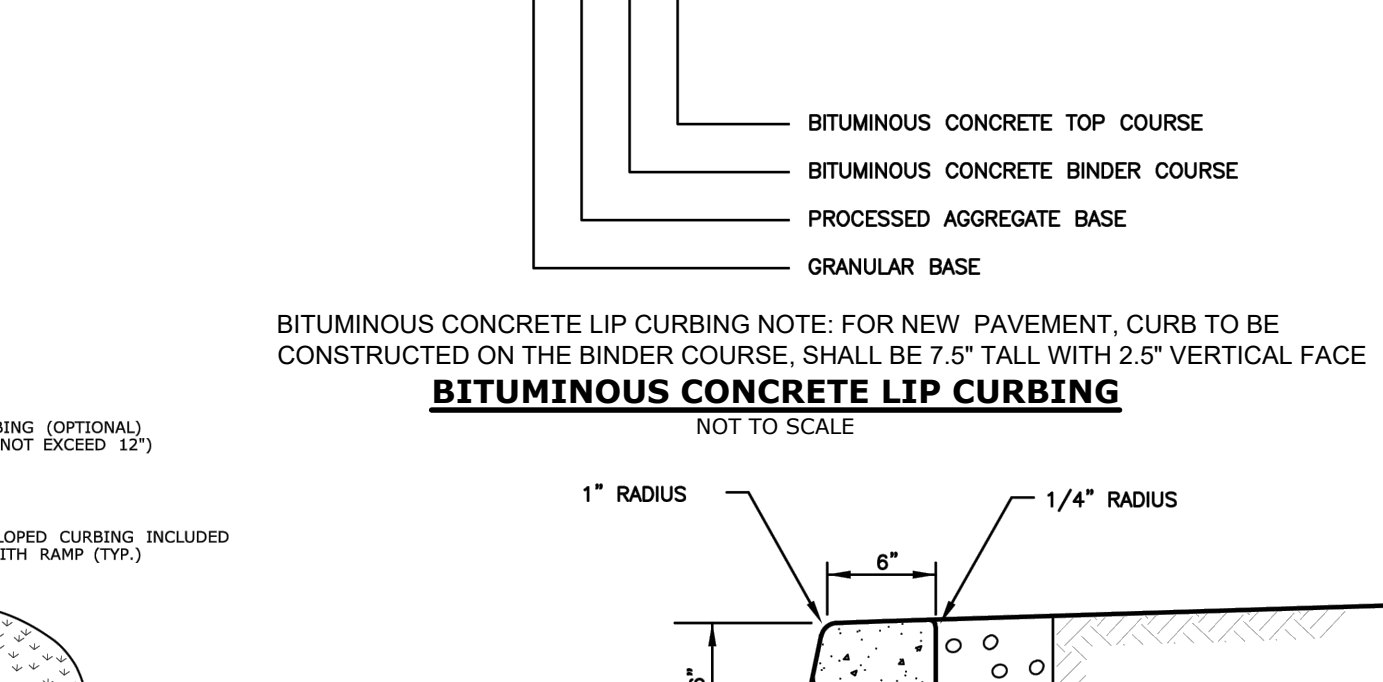
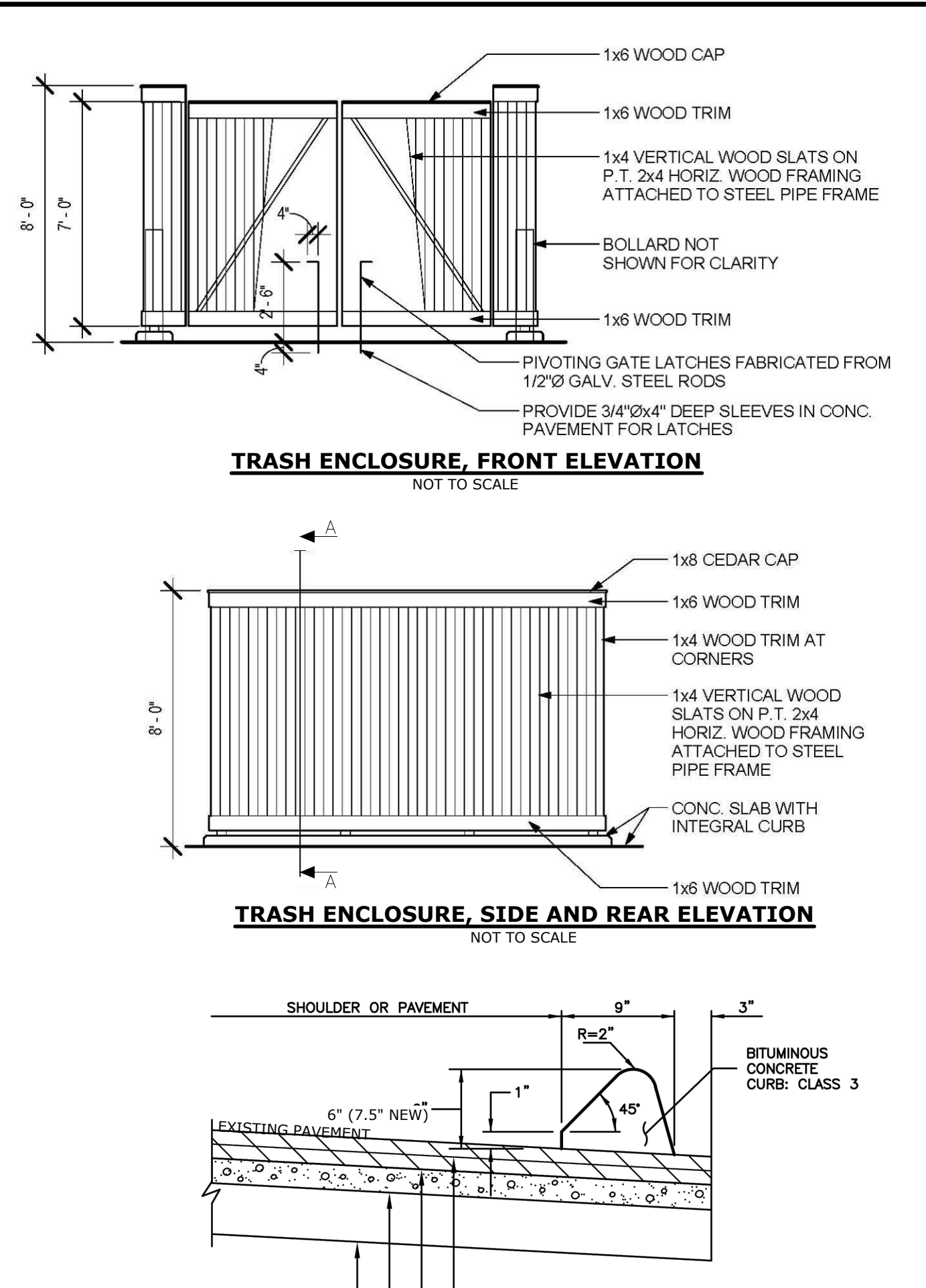
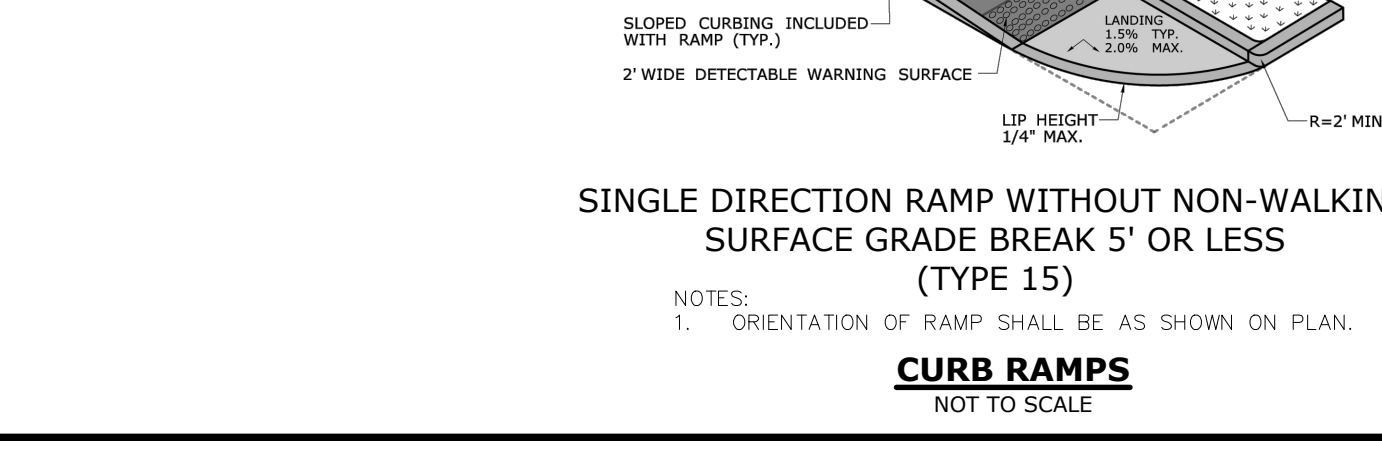
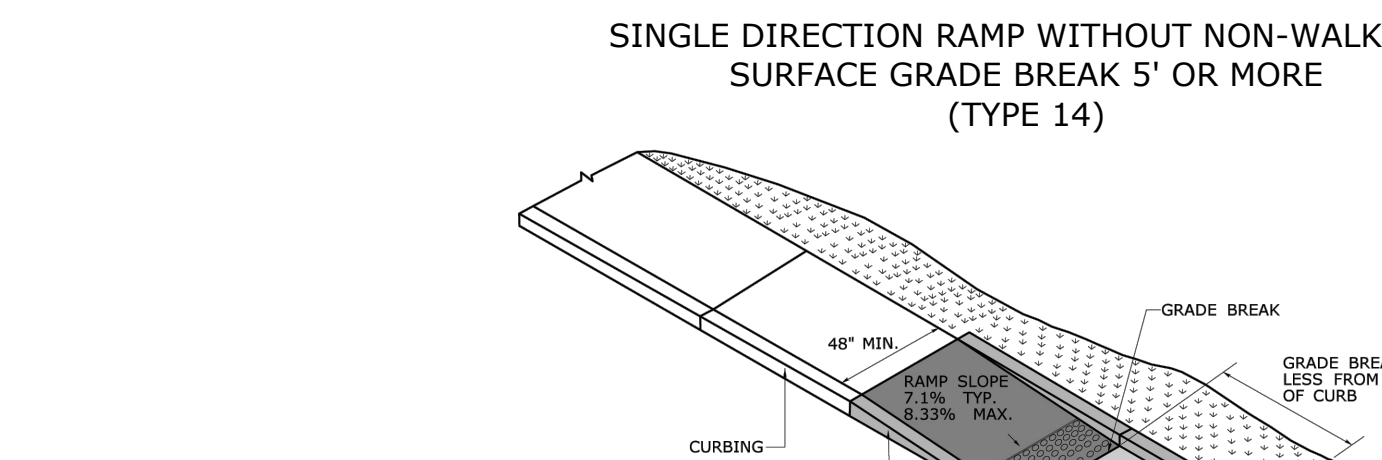
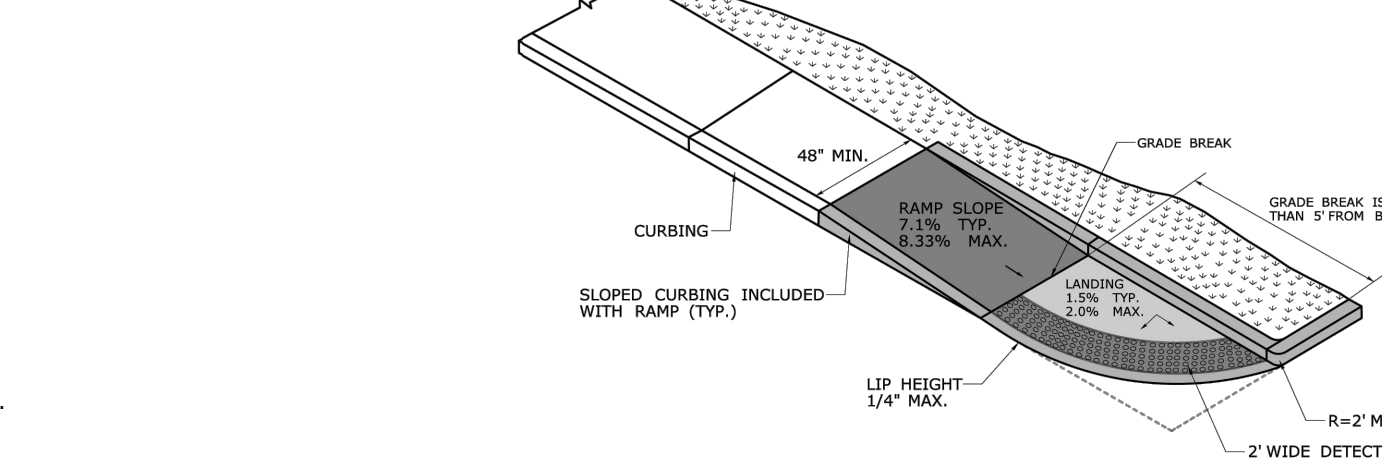
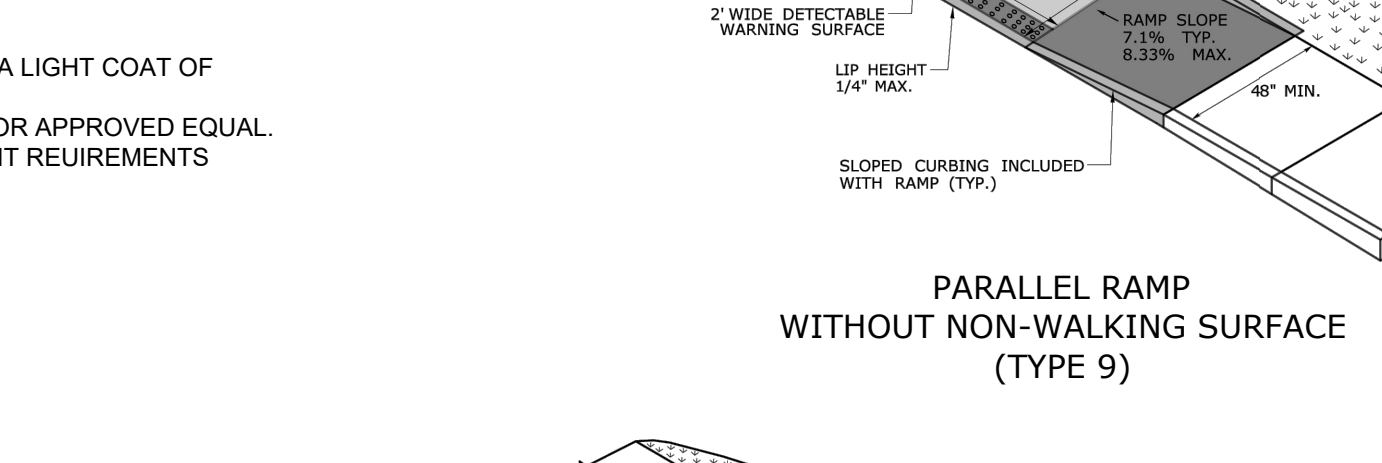
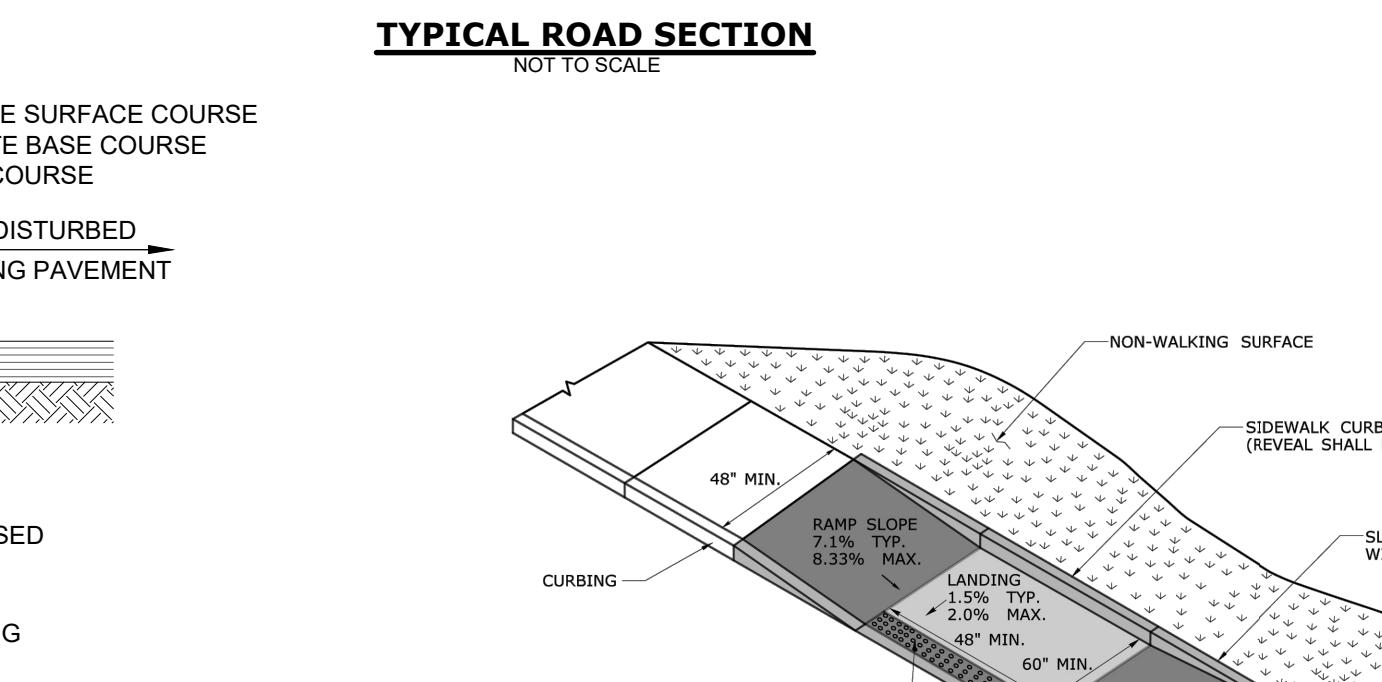
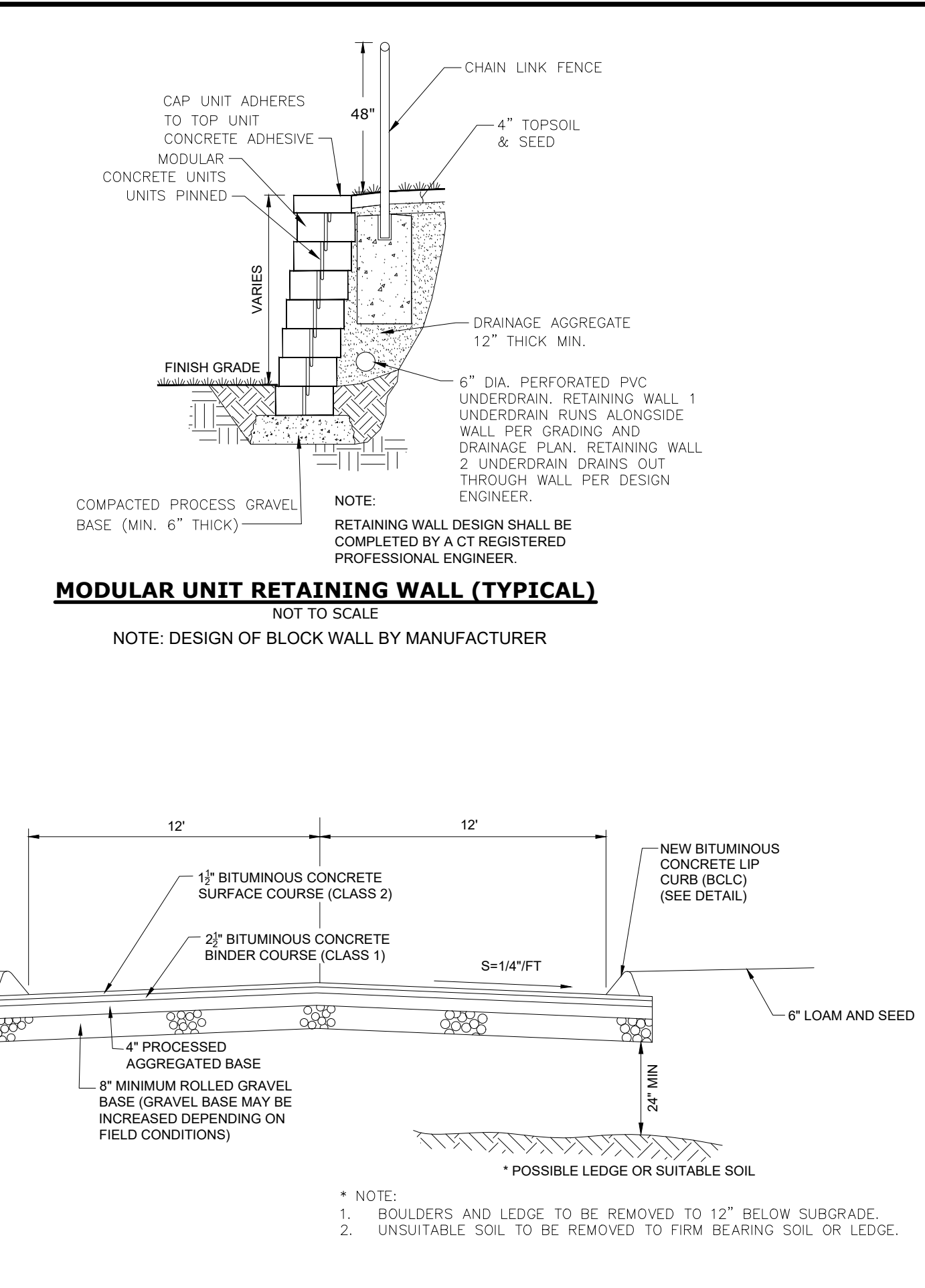
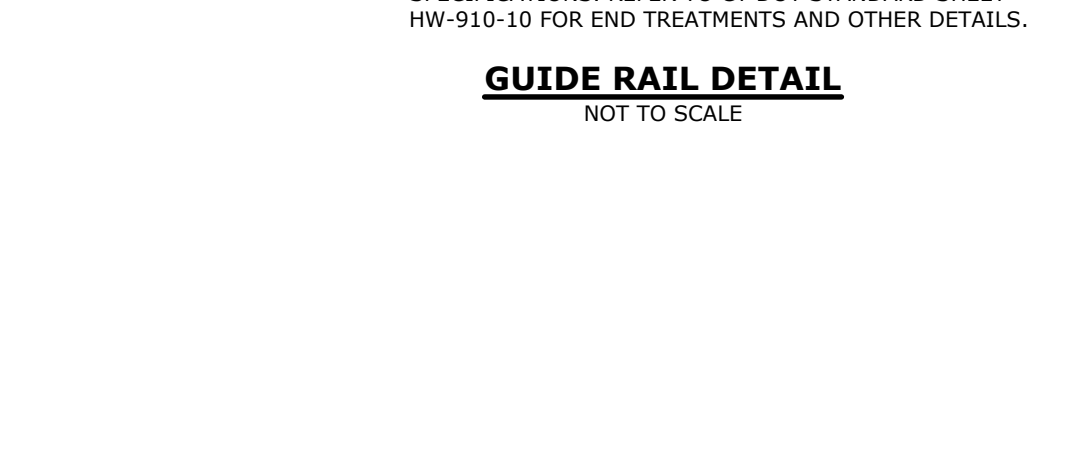
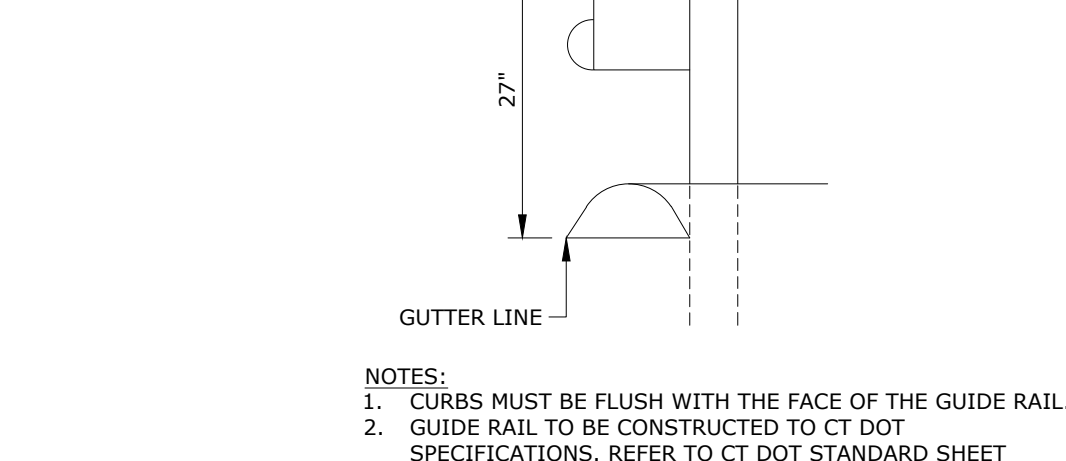
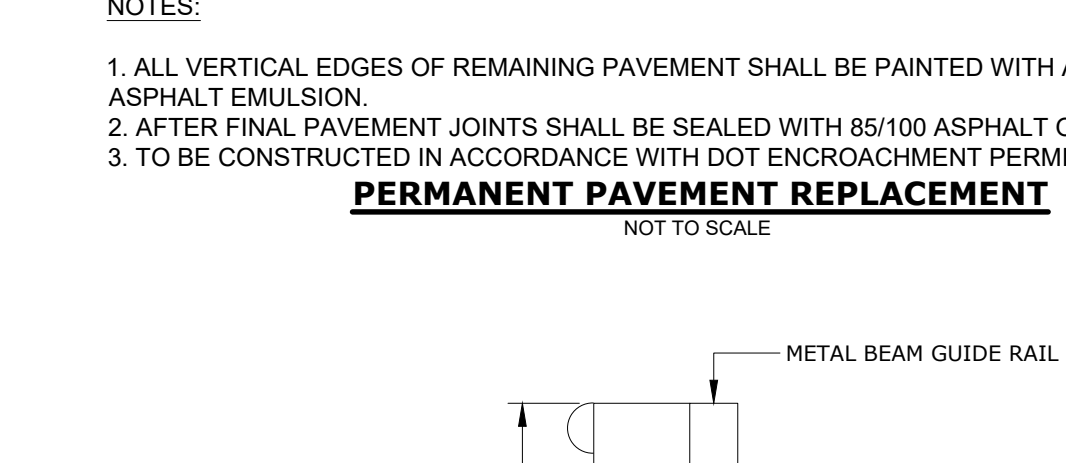
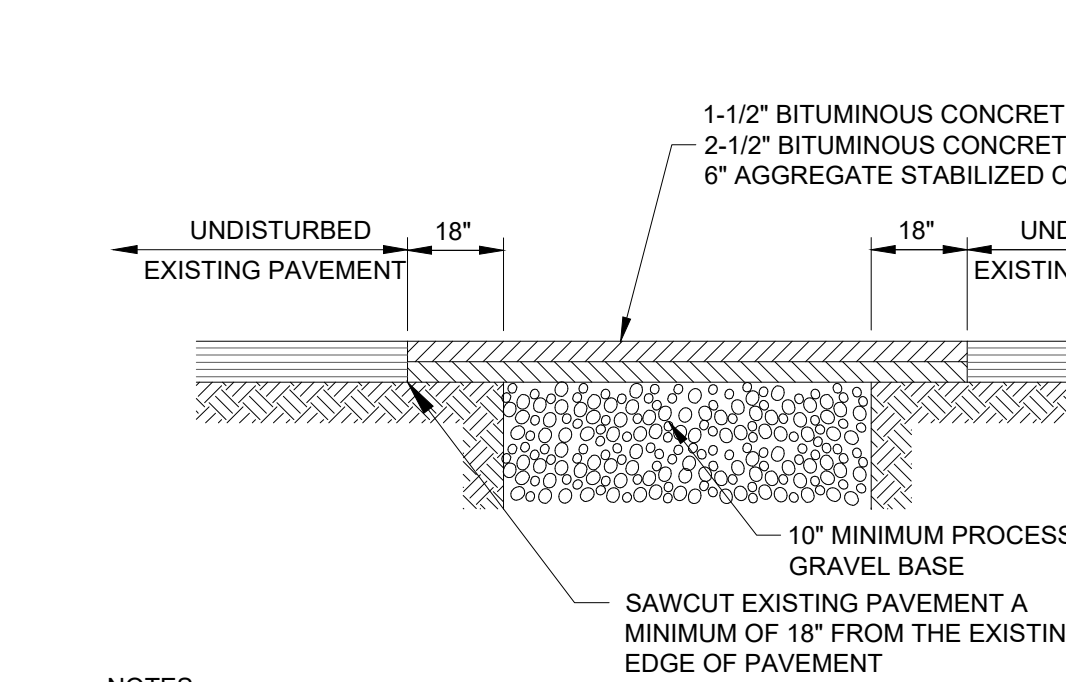
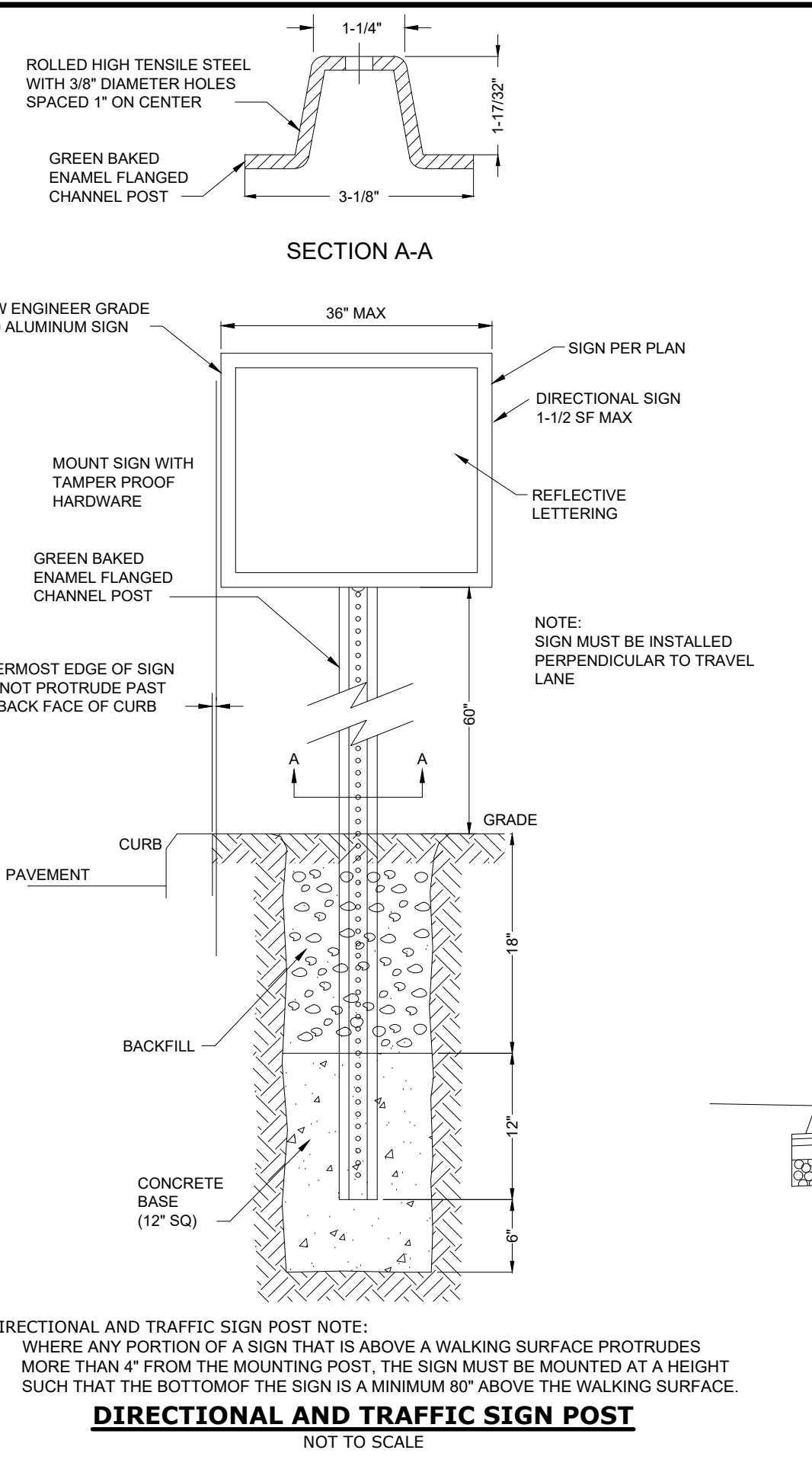
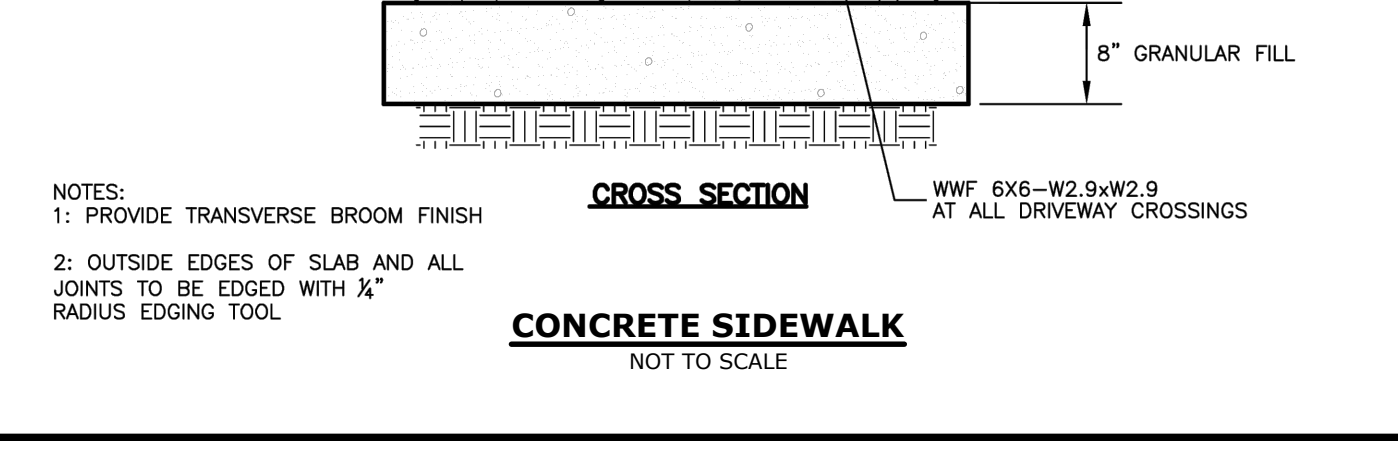
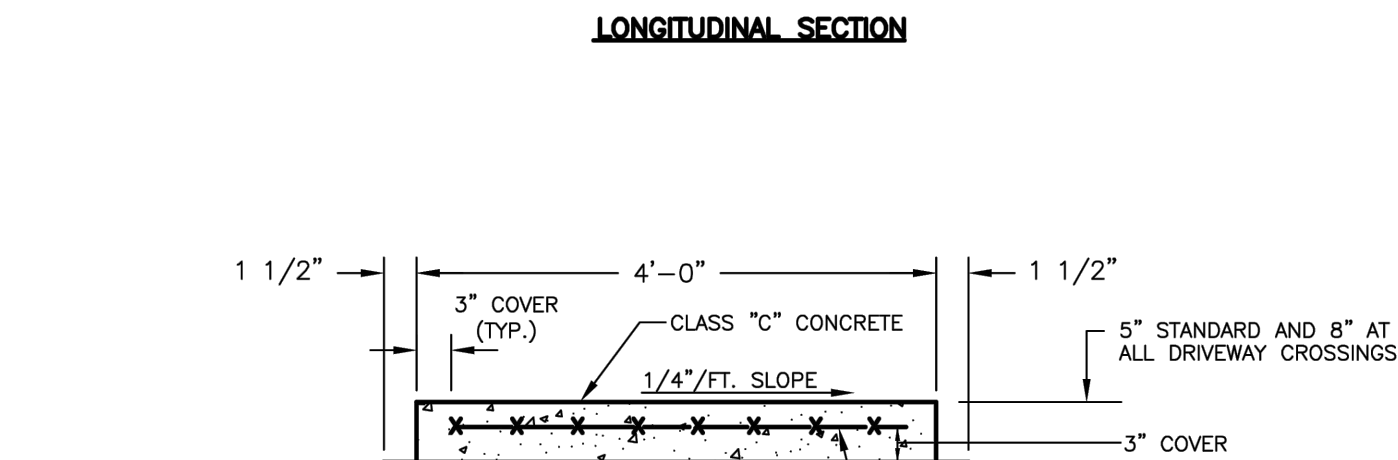
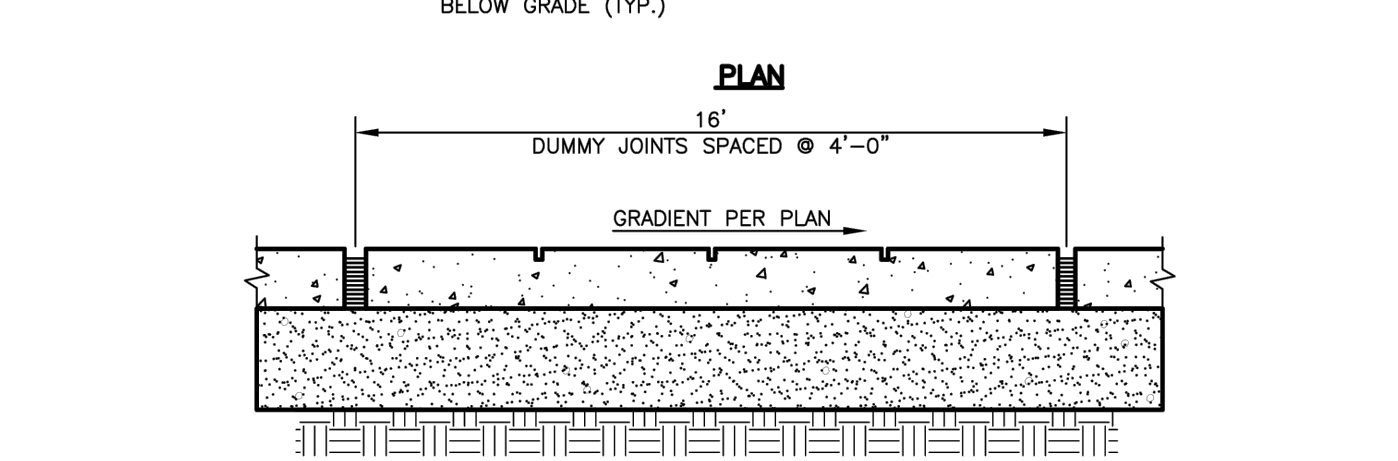
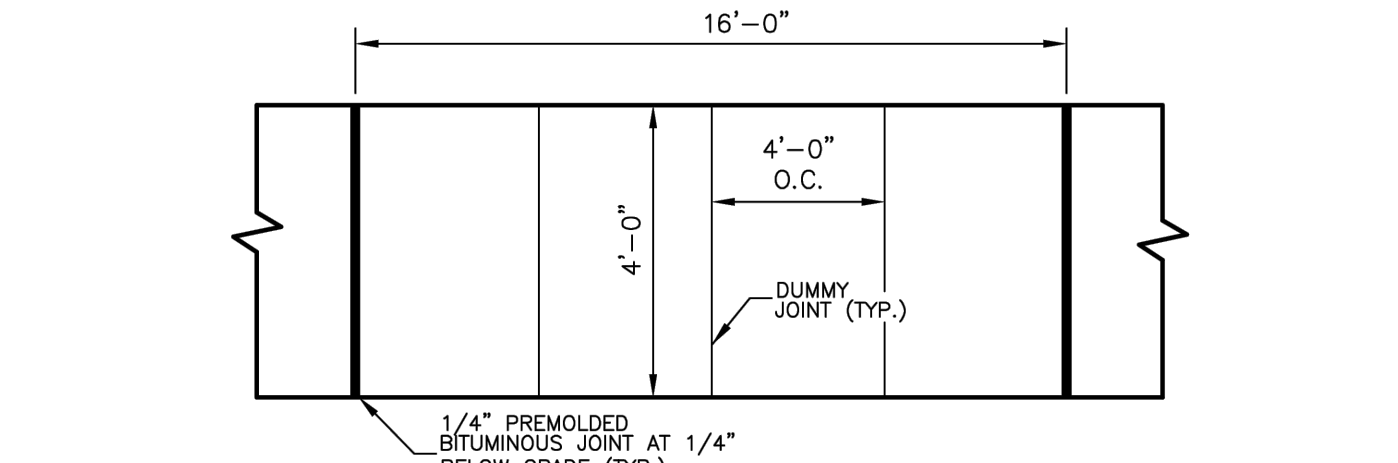
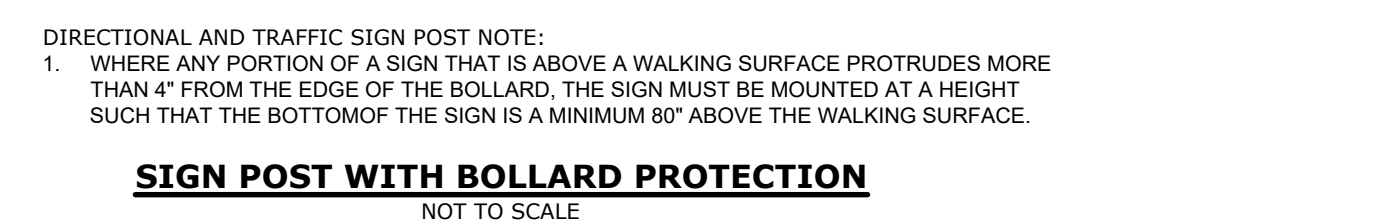
NO. OF SHEETS

19

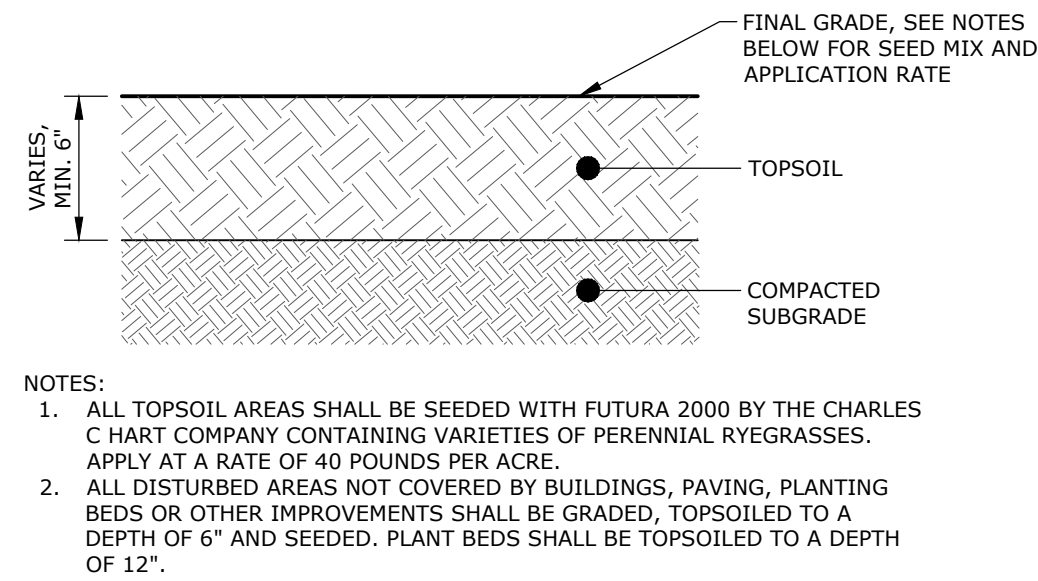
DRAWING

L-1





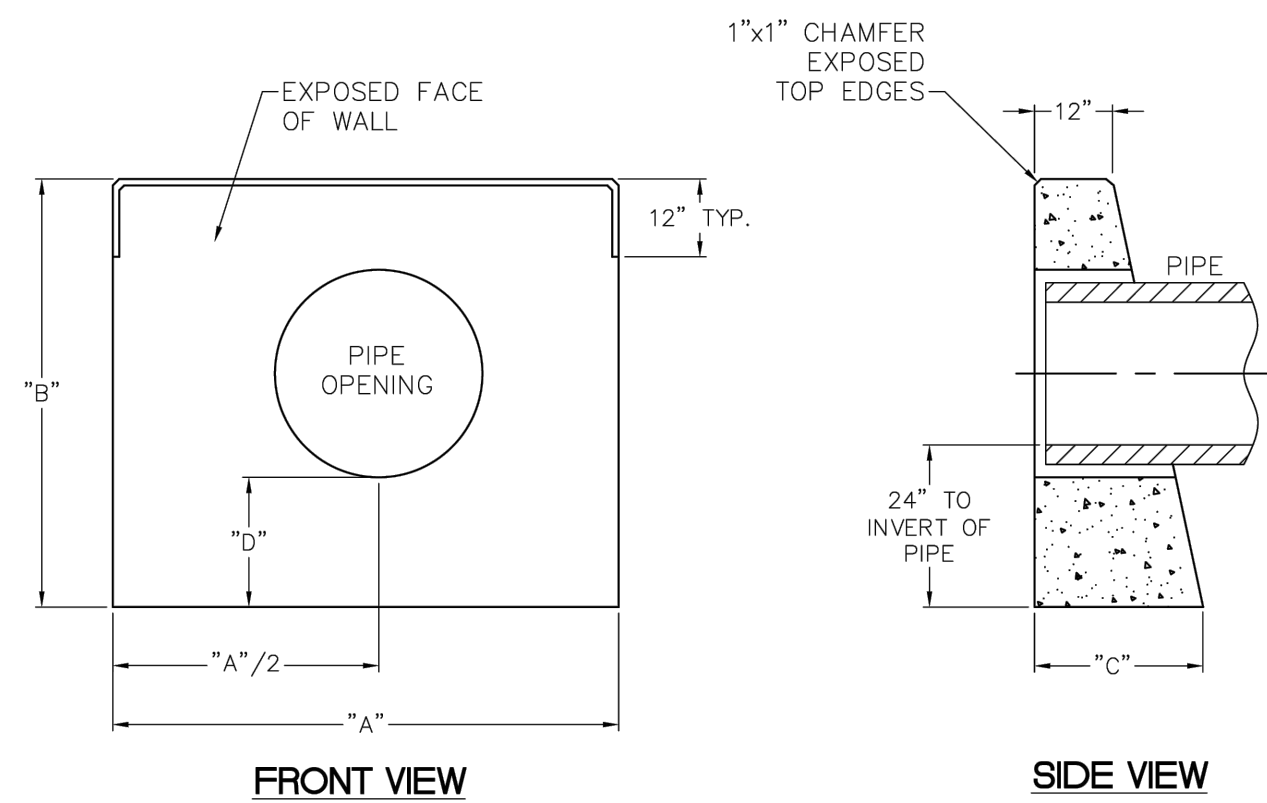




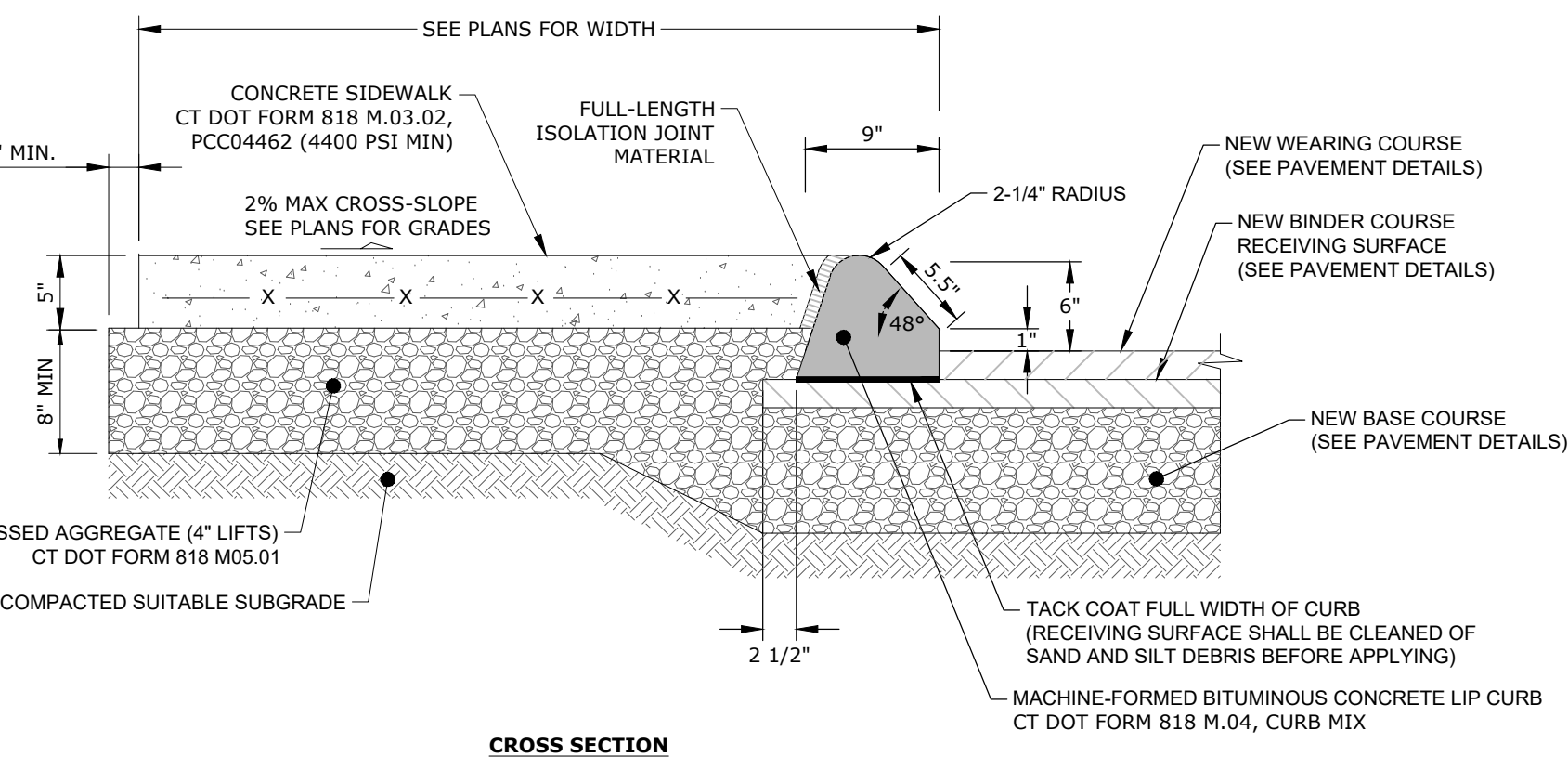
**TYPICAL CONCRETE STAIRS DETAIL**  
NOT TO SCALE

- 
- Technical drawing of a chain link fence assembly showing various components and dimensions. The drawing includes labels for the following parts:
- TERMINAL POST DOMED CAP
  - TOP RAIL (1.66" O.D.)
  - TOP SELVAGE TWISTED
  - TENSION BAR
  - TENSION BAND (12" O.C.)
  - BRACE BAND
  - RAIL END COMBINATION
  - BRACE RAIL (1.66" O.D.)
  - ADJUSTABLE TRUSS ROD (3/8" DIAMETER)
  - BOTTOM TENSION WIRE (7 GAUGE)
  - BOTTOM SELVAGE KNUCKLED
  - TRUSS ROD ADJUSTING UNIT
  - LOOP CAP
  - RAIL TIE
  - LINE POST TIE (12" O.C.)
  - CHAIN LINK FABRIC W/ BLACK VINYL PRIVACY SLATS
  - HOG RING (18" O.C.)
  - LINE POST LENGTH
  - FABRIC HEIGHT
  - FOOTINGS: DIAMETER (4X) POST DIAMETER, MINIMUM 3'-0" DEPTH
- Dimensions shown include:
- TERMINAL POST LENGTH: 12"
  - 10'-0" MAXIMUM SPACING
  - LINE POST LENGTH
  - FABRIC HEIGHT
  - CORNER POST LENGTH

- SCREENED CHAIN LINK FENCE DETAIL**  
NOT TO SCALE



- 
- 3 3/8"
- 1 1/2" SCH 40 ALUMINUM PIPE
- 15 1/16"
- 2 7/8"
- ALUM PIPE CAP
- 5/16" ALUM RIVER NUT
- POST
- 1 1/2" SCH 40 ALUMINUM PIPE
- SPRING LOCK WASHER (SS)
- 1/4" ROUND HEAD MACHINE SCREW (SS)
- 5/16" SOCKET HEAD CAP SCREW (SS)
- HI-COLLAR SPRING LOCK WASHER (SS)
- CAST ALUM RAIL ADAPTER #ASF-2
- CAST ALUM POST ADAPTER #ASF-1
- CONNECTION DETAIL**
- BASE FLANGE WITH TWO (2) STAINLESS STEEL ANCHORS
- TYPICAL TOP MOUNT CONNECTION TO CONCRETE CURB
- BASE FLANGE WITH FOUR (4) STAINLESS STEEL ANCHORS
- TYPICAL TOP MOUNT CONNECTION TO CONCRETE



- 
- UNITED CONCRETE PRODUCTS INC.**
- 173 CHURCH STREET TEL. 800 234-3119 FAX. (203) 265-4941  
 YALESVILLE, CT 06492 (203) 269-3119

## SITE DETAILS

**SHANTOK VILLAGE**  
1758 ROUTE 32, MONTVILLE, CT 06382  
PREPARED FOR:  
**1758 RTE 32, LLC**  
24 MAIN STREET, CENTERBROOK, CT 06404

		STANDARD ENDWALLS						
		PIPE SIZE	ORQ. SIZE	A	B	C	D	WEIGHT
IN STOCK	ITEM	12" RCP	20" S4	54"	54"	24"	20"	4600 LBS.
IN STOCK	ITEM	15" RCP	24" S4	66"	57"	24"	19"	5300 LBS.
IN STOCK	ITEM	18" RCP	26" S8	78"	60"	25"	20"	7000 LBS.
IN STOCK	ITEM	24" RCP	32" S8	102"	66"	26"	20"	10200 LBS.
		30" RCP	42" S8	126"	72"	27"	20"	13600 LBS.
		36" RCP	48" S8	150"	78"	32"	18"	19400 LBS.
		42" RCP	54" S7	174"	84"	33"	18"	25000 LBS.
		48" RCP	62" S8	198"	90"	36"	17"	32000 LBS.

APPROVED BY THE MONTVILLE PLANNING AND ZONING COMMISSION ON \_\_\_\_\_ DATE \_\_\_\_\_  
 APPROVAL EXPIRES FIVE (5) YEARS FROM APPROVAL DATE

\_\_\_\_\_  
 CHAIRMAN/SECRETARY DATE \_\_\_\_\_

DRAWING

**C-13**

SHEET NO.	15	NO. OF SHEETS	19
-----------	----	---------------	----



