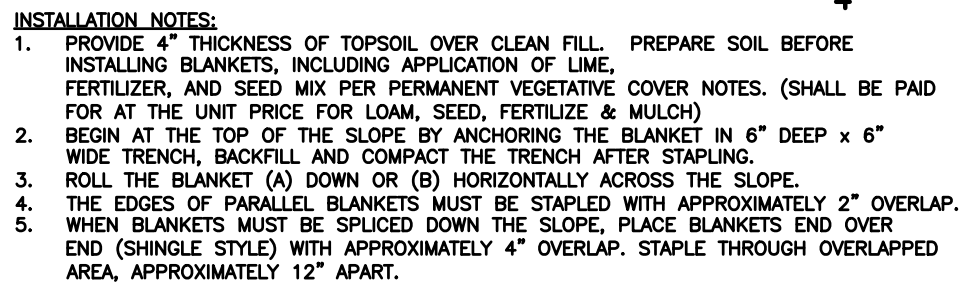


1. THE EROSION & SEDIMENTATION CONTROL PLAN AND DETAILS HAVE BEEN DEVELOPED AS A STRATEGY TO CONTROL SOIL EROSION AND SEDIMENTATION DURING AND AFTER CONSTRUCTION. THIS PLAN IS BASED ON THE "2024 CONNECTICUT GUIDELINES FOR SOIL EROSION AND SEDIMENT CONTROL" BY THE CONNECTICUT COUNCIL ON SOIL AND WATER CONSERVATION IN COOPERATION WITH THE CONNECTICUT DEEP.
2. THE PROPOSED LOCATIONS OF SEDIMENT AND EROSION CONTROL MEASURES ARE SHOWN ON THE PLANS. THE CONTRACTOR SHALL PROVIDED SILT FENCE, STONE CHECK DAMS AND/OR OTHER EROSION CONTROL MEASURES AS NEEDED OR DIRECTED BY THE ENGINEER OR TOWN STAFF TO ADEQUATELY PREVENT SEDIMENT TRANSPORT.
3. EROSION AND SEDIMENTATION CONTROL MEASURES SHALL BE INSTALLED PRIOR TO SITE DISTURBANCE.
4. TOWN STAFF SHALL BE NOTIFIED PRIOR TO THE START OF CONSTRUCTION TO INSPECT SEDIMENTATION AND EROSION CONTROL MEASURES
5. THE CONTRACTOR SHALL INSPECT, REPAIR AND/OR REPLACE EROSION CONTROL MEASURES EVERY 7 DAYS AND IMMEDIATELY FOLLOWING ANY SIGNIFICANT RAINFALL OR SNOW MELT. SEDIMENT DEPOSITS MUST BE REMOVED WHEN WHEN DEPOSITS REACH APPROXIMATELY ONE HALF THE HEIGHT OF THE BARRIER. SEDIMENT CONTROL DEVICES SHALL REMAIN IN PLACE AND BE MAINTAINED BY THE CONTRACTOR UNTIL AREAS UPSLOPE ARE PERMANENTLY STABILIZED.
6. STAKED HAY BALE SILT BARRIERS AND/OR SILT FENCE SHALL BE INSTALLED AROUND ANY TEMPORARY STOCKPILE AREAS. TEMPORARY VEGETATIVE COVER MAY BE REQUIRED (SEE NOTES).
7. INLET SEDIMENTATION CONTROL DEVICES SHALL BE INSTALLED UNDER THE GRATES OF ALL NEW CATCH BASINS AT THE TIME OF INSTALLATION, AND UNDER THE GRATES OF EXISTING CATCH BASINS IN THE CONSTRUCTION AREA.
8. CONTINUOUS DUST CONTROL USING WATER OR APPROVED EQUAL SHALL BE PROVIDED FOR ALL EARTH STOCKPILES, EARTH PILED ALONG EXCAVATIONS, SURFACES OF BACKFILLED TRENCHES AND GRAVELED ROADWAY SURFACES. **THE USE OF CALCIUM CHLORIDE FOR DUST CONTROL SHALL BE PROHIBITED.**
9. IF DEWATERING IS NECESSARY DURING ANY TIME OF CONSTRUCTION A CLEAR WATER DISCHARGE SHALL BE PROVIDED.
10. ALL DISTURBED AREAS SHALL BE RESTORED PER THE SLOPE STABILIZATION AND PERMANENT VEGETATION DETAILS. ALL DISTURBED AREAS THAT ARE SLOPED LESS THAN THREE HORIZONTAL TO ONE VERTICAL (3:1) SLOPE SHALL BE LOAMED, SEEDED, FERTILIZED AND MULCHED PER THE PERMANENT VEGETATIVE COVER SPECIFICATIONS. EROSION CONTROL MATTING OR STABILIZED HYDROSEED SHALL BE PROVIDED ON ALL DISTURBED AREAS THAT ARE SLOPED MORE THAN THREE HORIZONTAL TO ONE VERTICAL (3:1).
11. IF FINAL SEEDING OF DISTURBED AREAS IS NOT TO BE COMPLETED BEFORE OCTOBER 15, THE CONTRACTOR SHALL PROVIDE TEMPORARY MULCHING (DORMANT SEEDING MAY BE ATTEMPTED AS WELL) TO PROTECT THE SITE AND DELAY PERMANENT SEEDING.
12. WHEN FEASIBLE, TEMPORARY SEEDING OF DISTURBED AREAS THAT HAVE NOT BEEN FINISHED GRADED SHALL BE COMPLETED PRIOR TO OCTOBER 15.
13. ANY EROSION WHICH OCCURS WITHIN THE DISTURBED AREAS SHALL BE IMMEDIATELY REPAIRED AND STABILIZED. DURING THE CONSTRUCTION PHASE, INTERCEPTED SEDIMENT SHALL BE RETURNED TO THE SITE. POST SEEDING, INTERCEPTED SEDIMENT, IF ANY, SHALL BE DISPOSED OF IN A MANNER APPROVED BY THE TOWN AND ENGINEER.
14. EROSION AND SEDIMENTATION CONTROL MEASURES SHALL REMAIN IN PLACE UNTIL VEGETATION IS RE-ESTABLISHED OR SLOPES ARE STABILIZED AND REMOVAL IS APPROVED BY THE TOWN.
15. UNFORESEEN PROBLEMS WHICH ARE ENCOUNTERED IN THE FIELD SHALL BE SOLVED ACCORDING TO THE "2024 CONNECTICUT GUIDELINES FOR SOIL EROSION AND SEDIMENT CONTROL" BY THE CONNECTICUT COUNCIL ON SOIL AND WATER CONSERVATION IN COOPERATION WITH THE CONNECTICUT DEEP.
16. THE OWNER'S REPRESENTATIVE SHALL BE RESPONSIBLE FOR THE EROSION AND SEDIMENTATION CONTROLS
WILLIAM P
P&H CONSTRUCTION
Cell: 860-848-2372
bill@pandhconstruction.com



PRODUCT NOTES:
1. EROSION CONTROL MATTING MUST BE LISTED ON THE LATEST CT DOT QUALIFIED PRODUCTS LIST UNDER CLASS I: SLOPE PROTECTION, TYPE D.

NOTES:

1. HYDROSEED SHALL BE INSTALLED IN ACCORDANCE WITH SECTION 9.50.3.b OF DOT FORM 818.
2. BONDED FIBER MATRIX (BFM) OR FLEXIBLE GROWTH MEDIUM (FGM) MUST BE INCLUDED IN THE HYDROSEED SLURRY. MIX RATE PERCENTAGES SHALL BE IN ACCORDANCE WITH THE MANUFACTURERS RECOMMENDATIONS FOR THE FINISHED SLOPE. THE FOLLOWING ARE ACCEPTABLE PRODUCTS:
 - A. PROFILE FLEXFORMA FGM
 - B. PROFILE HYDRO-BLANKET BONDED FIBER MATRIX
 - C. MAT, INC. SOIL GUARD BONDED FIBER MATRIX
 - D. NORTH AMERICAN GREEN HYDRA GT OR HYDRA CM
3. THE REQUIRED SEED MIX SHALL BE IN ACCORDANCE WITH THE PERMANENT VEGETATIVE COVER APPLICATION RATES SPECIFIED ON THE DISTURBED AREA. SEED SHALL BE APPLIED AT A RATE OF 10% FOR HYDROSEEDING.
4. THE CONTRACTOR SHALL ENSURE 100% COVERAGE OF THE DISTURBED SOIL.

6" TOPSOIL PER
PERMANENT VEGETATIVE
COVER NOTES

UNDISTURBED AREA

UNDISTURBED AREA

4" CLEAN FILL

SLOPE STABILIZATION DETAILS
NOT TO SCALE

A TEMPORARY SEEDING OF RYE GRASS WILL BE COMPLETED WITHIN 15 DAYS OF THE FORMATION OF STOCKPILES. IF THE SOIL IN THE STOCKPILES HAS BEEN COMPACTED BY CONSTRUCTION OPERATIONS IT SHALL BE LOOSENED TO A DEPTH OF 2 INCHES BEFORE THE FERTILIZER, LIME AND SEED IS APPLIED. 10-10-10 FERTILIZER AT A RATE OF 7.5 POUNDS PER 1000 S.F. LIMESTONE AT A RATE OF 90 LB. PER 1000 S.F. SHALL BE USED. RYE GRASS SEED AT A RATE OF 10 LB. PER 1000 S.F. SHALL BE USED. TEMPORARY VEGETATIVE COVER SHALL BE STRAW FREE FROM WEEDS AND COARSE MATERIAL SHALL BE USED AT A RATE OF 70-90 LB. PER 1000 S.F. AS A TEMPORARY MULCH. APPLY MULCH AND DRIVE TRACKED EQUIPMENT UP AND DOWN SLOPE OVER ENTIRE SURFACE SO CLEAT MARKS ARE PARALLEL TO THE CONTOURS.

GRASS SEED WILL BE REPLACED ONCE THE EXCAVATIONS HAVE BEEN COMPLETED AND THE SLOPES ARE
TOSPOILED AS SHOWN ON THE PLANS. PROVIDE SLOPE PROTECTION AS CALLED FOR ON THE PLANS.
ONCE THE TOSPOILING IS COMPLETED, THE SOIL SHALL BE SPREAD AT A MINIMUM COMPACTED DEPTH OF 6 INCHES. ONCE
THE TOSPOIL HAS BEEN SPREAD, ALL STONES TWO INCHES OR LARGER IN ANY DIMENSION WILL
BE REMOVED AS WELL AS DEBRIS.

- APPLY AGRICULTURAL GROUND LIMESTONE AT THE RATE OF TWO TONS PER ACRE OR 100
LBS. PER 1000 S.F.
- LBS. PER 10-10 LB FERTILIZER OR EQUIVALENT AT A RATE OF 300 LBS. PER ACRE OR
7.5 LBS. PER 1000 S.F.
- WORK LIMESTONE AND FERTILIZER INTO THE SOIL TO A DEPTH OF 4 INCHES.
- INSPECT SEEDBED BEFORE SEEDING.
- IF TRAFFIC HAS COMPACTED THE SOIL, RETILL COMPACTED AREAS.
- APPLY THE FOLLOWING GRASS SEED MIX:

THE NEW ENGLAND ROADSIDE MIXTURE APPLICATION SEED MIX BY NEW ENGLAND WEEDLAND PLANTS, INC.

APPLICATION RATE: 35 LBS/ACRE : 1,250 SF/LB. MIX IS DESIGNED FOR USE ALONG ROADS AND HIGHWAYS. THIS MIX CONTAINS NATIVE GRASSES, WILDFLOWERS, AND SHRUBS THAT ARE BLENDED TOGETHER AS A NATIVE PLANT SEED MIX. IN AREAS THAT RECEIVE FREQUENT MOWING, THE COLD SEASON PERENNIALS WILL BE THE MOST COMMON PLANTS CLOSEST TO THE ROADWAY SHOULDER. IN AREAS FARTHER TO THE ROAD, WHICH MAY BE MOWN ONLY ONCE EACH YEAR, OR IN HARD TO MOW AREAS, SUCH AS AROUND SIGNPOSTS, THE WILDFLOWER COMPONENT WILL BECOME DOMINANT. ALONG CUTS AND SIDE SLOPES WHICH MAY NEVER BE MOWN, THE SHRUB COMPONENT WILL ADD DIVERSITY AND BEAUTY TO THE ROADSIDE PLANTINGS. IT IS A PARTICULARLY APPROPRIATE SEED MIX FOR ROADSIDES, INDUSTRIAL SITES, RAIL CUTS, AND FILL SLOPES. THIS MIX MAY BE APPLIED BY HYDROSEEDING, OR BY SPREADING. SPREADING IS THE MOST COMMON METHOD OF APPLICATION. WEEDS WILL BE CONTROLLED EITHER BY RAKE OR ROLL. THE SOIL TO IMPROVE SEED-TO-SOIL CONTACT. BEST RESULTS ARE OBTAINED WITH A MID-LATE SPRING SEEDING. SUMMER SEEDING WILL BENEFIT FROM A LIGHT MULCHING OF CLEAN, WEED-FREE STRAW TO CONSERVE SOIL MOISTURE.

CT DEP SEED MIX NO. 26	<u>LBS./ACRE</u>	<u>LBS./1000 S.F.</u>
SWITCHGRASS (BLACKWELL, SHELTER, CAVE-IN-ROCK)	4.0	0.10
BIG BLUESTEM (NIAGRA, KAW)	4.0	0.10
LITTLE BLUESTEM (BLAZE, ALDOUS, CAMPER)	2.0	0.05
SAND LOVEGRASS (NE-27, BEND)	1.5	0.03
BIRD'S-FOOT TREFLOIL (EMPIRE VIKING)	2.0	0.05
	<u>13.5</u>	<u>0.33</u>

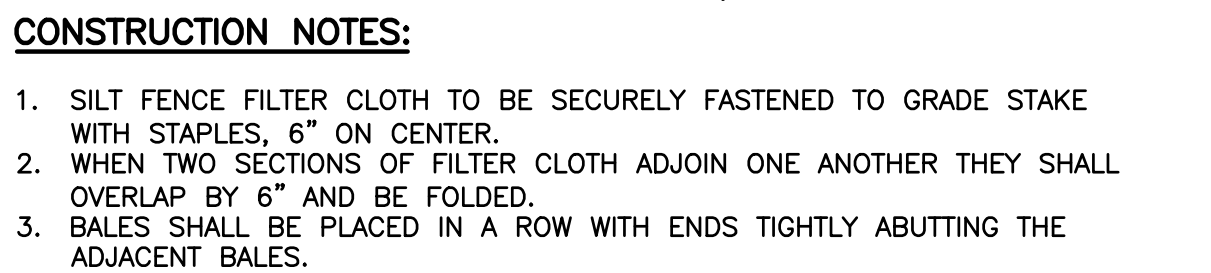
THE RECOMMENDED SEEDING DATES ARE:
APRIL 1 - JUNE 15 AND AUGUST 15 - OCTOBER 15

IMMEDIATELY FOLLOWING SEEDING, FIRM SEED BED WITH A ROLLER AND MULCH WITH WEED FREE STRAW. IF PERMANENT VEGETATIVE COVER IS HAS NOT BEEN ESTABLISHED BY OCTOBER 15, APPLY A TEMPORARY VEGETATIVE COVER ON THE TOPSOIL.

SEED MIXTURE FOR SETTLING BASINS SHALL BE THE "NEW ENGLAND EROSION CONTROL/RESTORATION MIX FOR MOIST SITES" FROM NEW ENGLAND WETLAND PLANTS, AMHERST, MA, TELEPHONE NO. 413-548-8000

THE BEST RESULTS ARE OBTAINED WITH A SPRING SEEDING. SUMMER AND FALL SEEDING REQUIRE A LIGHT MULCHING OF WEED FREE STRAW TO CONSERVE MOISTURE. LATE FALL AND WINTER DORMANT SEEDING REQUIRE A 10% INCREASE IN THE SEEDING RATE. FERTILIZATION IS NOT REQUIRED UNLESS THE SOILS ARE PARTICULARLY INFERTILE.

NEW ENGLAND EROSION CONTROL/RESTORATION MIX FOR DETENTION BASINS AND MOIST SITES	35	0.80
SPECIES: Virginia Wild Rye, (<i>Elymus virginicus</i>), Creeping Red Fescue, (<i>Festuca rubra</i>), Little Bluestem, (<i>Schizachyrium scoparium</i>), Big Bluestem, (<i>Andropogon gerardi</i>), Fox Sedge, (<i>Carex vulpinoidea</i>), Switch Grass, (<i>Panicum virgatum</i>), Rough Bentgrass, (<i>Agrostis scabra</i>), New England Aster, (<i>Aster novae-angliae</i>), Boneset, (<i>Eupatorium perfoliatum</i>), Grass Leaved Goldenrod, (<i>Euthamia graminifolia</i>), Green Burdock, (<i>Scirpus atrovirens</i>), Blue Vervain, (<i>Verbena hastata</i>), Soft Rush, (<i>Juncus effusus</i>), Wool Grass, (<i>Scirpus cespitosus</i>)		



1. SILT FENCE FILTER CLOTH TO BE SECURELY FASTENED TO GRADE STAKE WITH STAPLES, 6" ON CENTER.
2. WHEN TWO SECTIONS OF FILTER CLOTH ADJOIN ONE ANOTHER THEY SHALL OVERLAP BY 6" AND BE FOLDED.
3. BALES SHALL BE PLACED IN A ROW WITH ENDS TIGHTLY ABUTTING THE ADJACENT BALES.

NOT TO SCALE

APPROVED BY THE MONTVILLE PLANNING AND ZONING COMMISSION

FINAL APPROVAL: _____

CHAIRMAN SIGNATURE _____ DATE _____

DATE OF APPROVAL: _____

EXPIRATION DATE: _____

1. POLLUTION PREVENTION TEAM:
THE CONTRACTOR SHALL BE RESPONSIBLE FOR CARRYING OUT THE PROVISIONS OF THIS PLAN.

2. SWEEPING:
PARKING LOTS, SIDEWALKS AND OTHER IMPERVIOUS SURFACES BEYOND THE WORK SITE SHALL BE SWEEPED CLEAN OF SAND, SILT AND LITTER DAILY AT THE END OF THE WORK DAY.

3. OUTSIDE STORAGE:
ACCESSORIES OR EQUIPMENT STORED OUTSIDE SHALL BE COVERED OR MAINTAINED TO MINIMIZE POSSIBILITY OF THESE MATERIALS OR THEIR RESIDUE PASSING TO STORM WATER.

4. WASHING:
NO WASHING OF VEHICLES, ACCESSORIES, EQUIPMENT, OR APPLIANCES IN WORK SITE.

5. MAINTENANCE AND INSPECTION:
A. THE CONTRACTOR SHALL INSPECT, REPAIR AND/OR REPLACE EROSION CONTROL MEASURES EVERY 7 DAYS AND IMMEDIATELY FOLLOWING ANY RAINFALL OF ½" OR MORE, OR SIGNIFICANT SNOW MELT.
B. SEDIMENT DEPOSITS MUST BE REMOVED AND DISPOSED OF WHEN THEY REACH THE FOLLOWING LEVELS:
• SILT FENCE OR HAY BALES: ONE HALF THE HEIGHT OF THE SILT FENCE OR HAY BALE BARRIER.
• INLET SEDIMENT CONTROL DEVICES (SILT SACKS): ONE HALF THE STORAGE VOLUME OF THE DEVICE OR WHEN THE RESTRAINT CORD IS NO LONGER VISIBLE.
• STONE CORK DAMS AND INLETS: ONE HALF OF IT THE TEMPORARY POOL HEIGHT.
C. DAILY DUST CONTROL USING WATER OR APPROVED EQUAL SHALL BE PROVIDED FOR ALL EARTH STOCKPILES, EARTH PILED ALONG EXCAVATIONS, SURFACES OF BACKFILLED TRENCHES AND GRAVELED SURFACES.
D. SILT FENCE AND INLET SEDIMENT CONTROL DEVICES SHALL BE REPLACED WITH RIPS OR DETERIORATION IN THE GEOTEXTILE FABRIC ARE FOUND ON INSPECTION. HAY BALES SHALL BE REPLACED IF THEY HAVE DETERIORATED OR DECOMPOSED TO THE POINT WHERE THEY HAVE LOST STRUCTURAL INTEGRITY. CRUSHED STONE SHALL BE REMOVED AND REPLACED IF SILT HAS ACCUMULATED WITH THE STONE VOIDS TO PREVENT THE PASSAGE OF WATER THROUGH THE STONE.

6. SPILLS OR ACCIDENTAL DISCHARGES:
A. COMPLY WITH STATE AND FEDERAL REGULATIONS TO CONTAIN AND CLEAN UP ANY SPILL OR DISCHARGE AND DISPOSE OF MATERIALS AT AN APPROVED FACILITY.
B. CONTACT CONNECTICUT DEEP OIL AND CHEMICAL SPILL RESPONSE DIVISION (860) 424-3338
C. THE FOLLOWING STEPS SHOULD BE PERFORMED AS SOON AS POSSIBLE:
• STOP THE SOURCE OF THE SPILL
• CONTAIN THE SPILL
• COVER SPILL WITH ABSORBENT MATERIAL SUCH AS KITTY LITER, SAWDUST OR OIL ABSORBENT PADS. DO NOT USE STRAW.
• DISPOSE OF ABSORBER IN ACCORDANCE WITH LOCAL AND STATE REGULATIONS.

POLLUTION PREVENTION TEAM:
THE OWNERS SHALL BE RESPONSIBLE FOR CARRYING OUT THE PROVISIONS OF THIS PLAN.

2. SWEEPING:
PARKING LOTS, SIDEWALKS AND OTHER IMPERVIOUS SURFACES SHALL BE SWEEPED CLEAN OF SAND AND LITTER AND ANY OTHER POLLUTANTS AT LEAST TWICE PER YEAR.
A. BETWEEN NOVEMBER 15 AND DECEMBER 15 (AFTER LEAF FALL)
B. DURING APRIL (AFTER SNOW MELT)

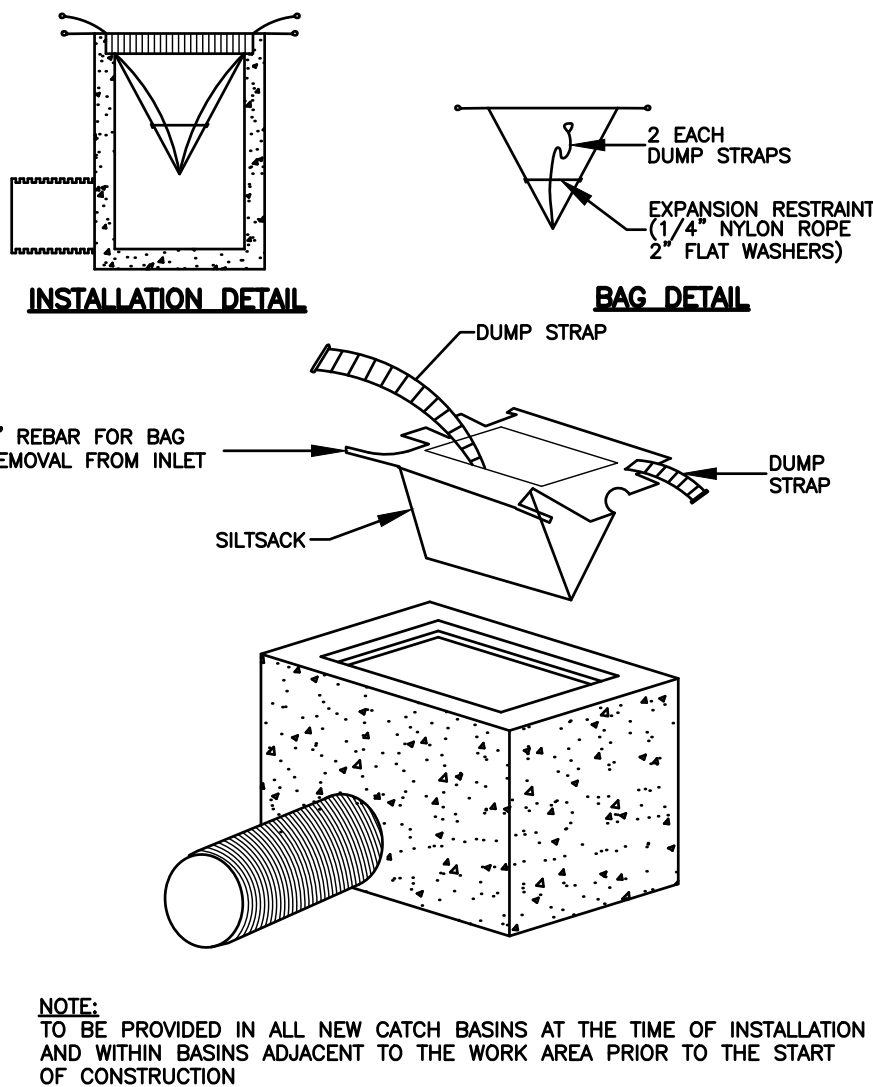
3. OUTSIDE STORAGE:
ACCESSORIES OR EQUIPMENT STORED OUTSIDE SHALL BE COVERED OR MAINTAINED TO MINIMIZE POSSIBILITY OF THESE MATERIALS OR THEIR RESIDUE PASSING TO STORM WATER.

4. WASHING:
NO WASHING OF VEHICLES, ACCESSORIES, EQUIPMENT OR APPLIANCES IN PARKING AREAS.

MAINTENANCE AND INSPECTION:
SEE OPERATIONS AND MAINTENANCE SCHEDULE

6. SPILLS OR ACCIDENTAL DISCHARGES:
A. COMPLY WITH STATE AND FEDERAL REGULATIONS TO CONTAIN AND CLEAN UP ANY SPILL OR DISCHARGE AND DISPOSE OF MATERIALS AT AN APPROVED FACILITY.
B. CONTACT CONNECTICUT DEEP OIL AND CHEMICAL SPILL RESPONSE DIVISION (860) 424-3338
C. THE FOLLOWING STEPS SHOULD BE PERFORMED AS SOON AS POSSIBLE:


- STOP THE SOURCE OF THE SPILL
- CONTAIN THE SPILL
- COVER SPILL WITH ABSORBENT MATERIAL SUCH AS KITTY LITER, SAWDUST OR OIL ABSORBENT PADS. DO NOT USE STRAW.
- DISPOSE OF ABSORBER IN ACCORDANCE WITH LOCAL AND STATE REGULATIONS.

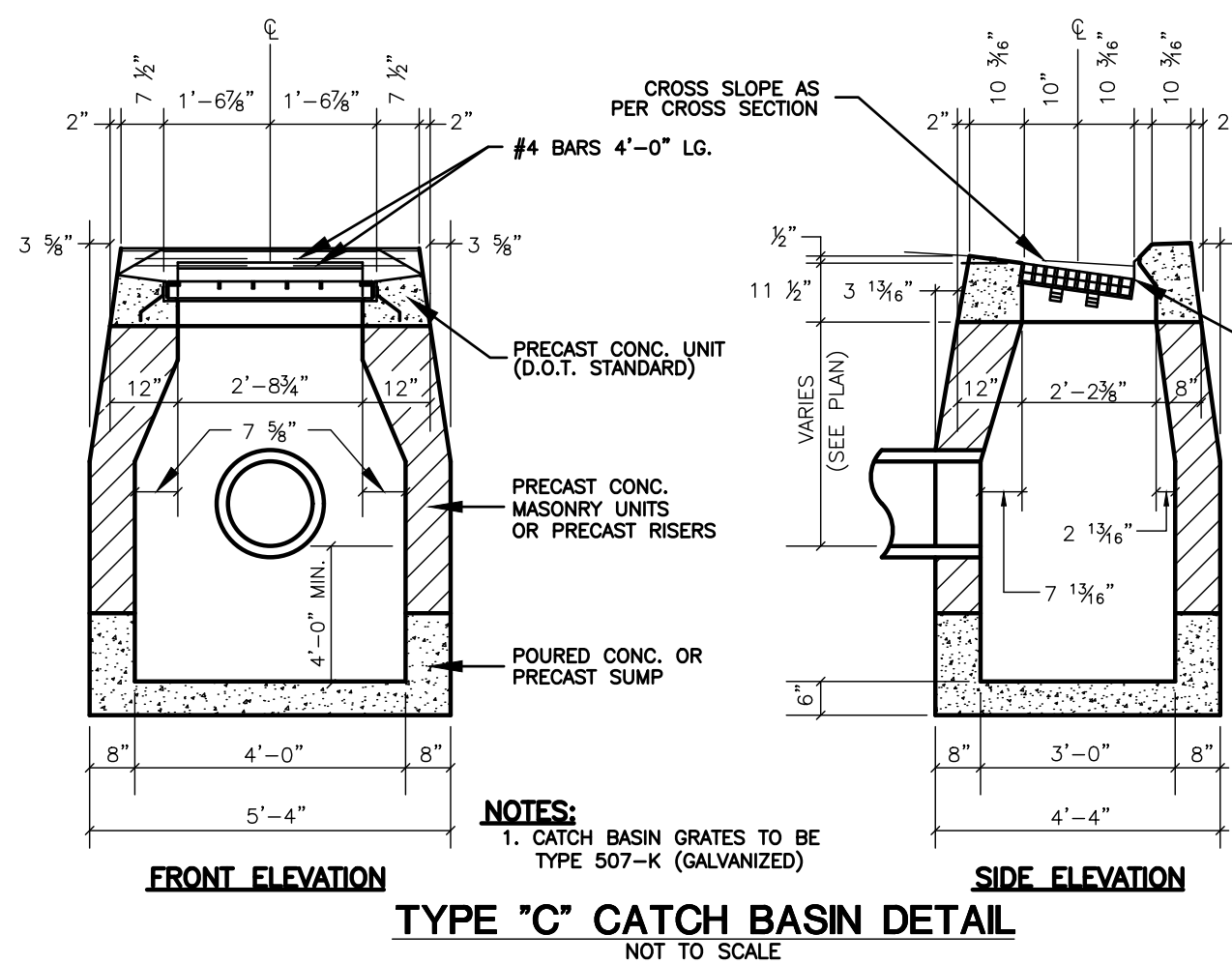


NOT TO SCALE

Maintenance Schedule for Trailer Storage Areas	
Activity	Schedule
Sweep parking lots & impervious areas	<ul style="list-style-type: none"> Between November 15th and December 15th (after leaf fall) During April (after snow melt)
Remove and dispose of trash and debris onsite	Daily - As needed maintenance

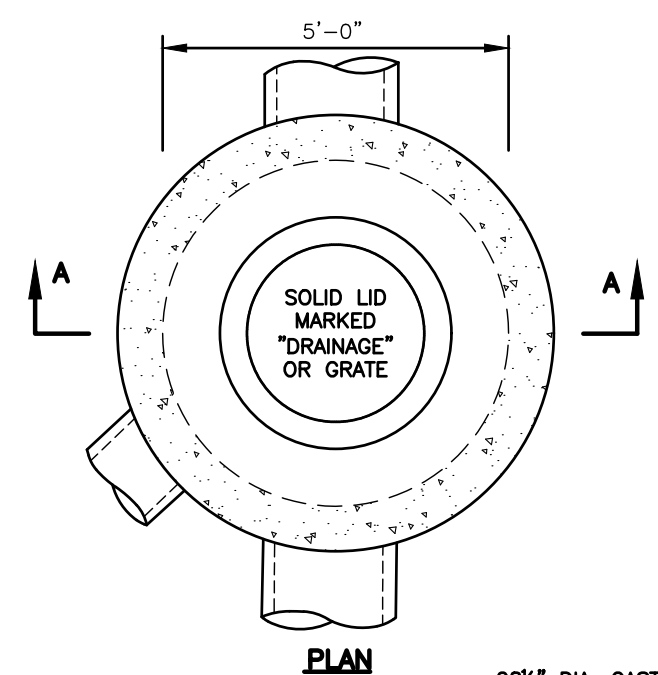
Maintenance Schedule for Qualifying Pervious Area (QPA)	
Activity	Schedule
Sweep impervious areas	<ul style="list-style-type: none"> Between November 15th and December 15th (after leaf fall) During April (after snow melt)
Inspect QPA for erosion and loss of vegetation	Annually - As needed maintenance
Remove and dispose of trash and debris onsite	Annually - As needed maintenance

				 CLA Engineers, Inc. CIVIL • STRUCTURAL • SURVEYING	
				317 Main Street Norwich, CT 06360 (860) 886-1966 Fax (860) 886-9165	
No.	DATE	REVISION			
<div style="border: 2px solid red; padding: 10px; text-align: center;"> <p>FOR PERMITTING ONLY NOT FOR CONSTRUCTION</p> </div>		349 MAPLE AVE, LLC RAND-WHITNEY REALTY, LLC		Project No. CLA-7767F	
		PROPOSED TRAILER STORAGE 375 MAPLE AVENUE & ROUTE 163 MONTVILLE, CT		Proj. Engineer D.P.H.	
				Date: 12/16/24	
				Sheet No.	
		E&S NOTES & DETAILS		<div style="font-size: 48px; font-weight: bold;">7</div>	



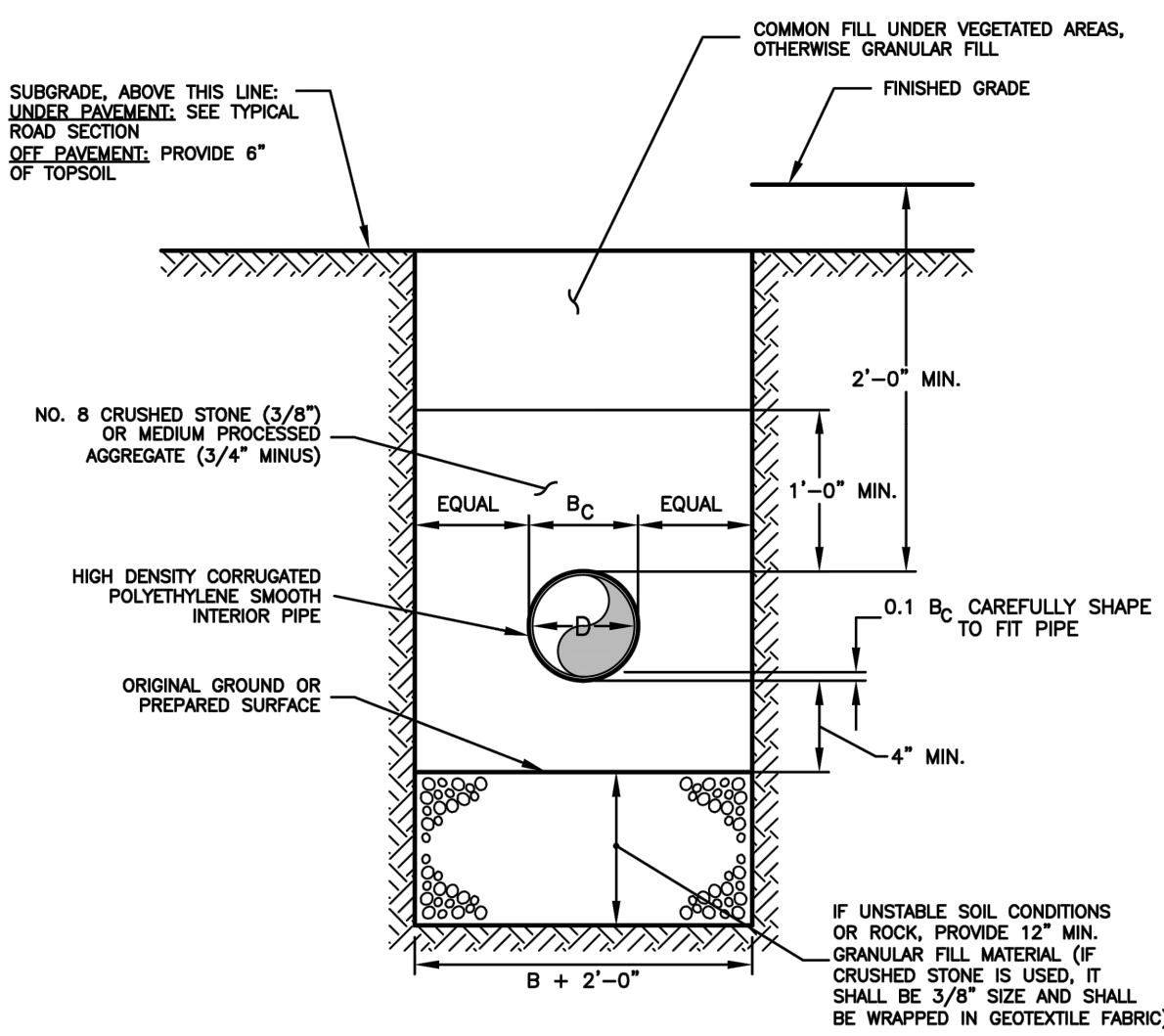
TYPE "C" CATCH BASIN DETAIL

NOT TO SCALE



STANDARD DRAINAGE MANHOLE DETAIL

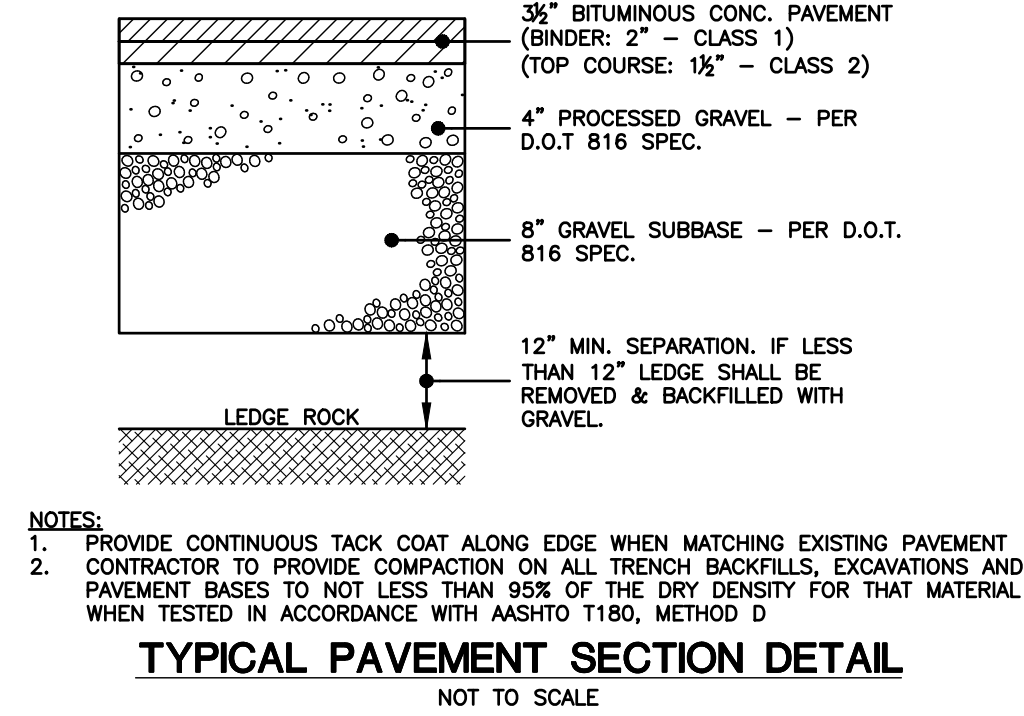
NOT TO SCALE



TRENCH DETAIL: DRAINAGE CULVERT

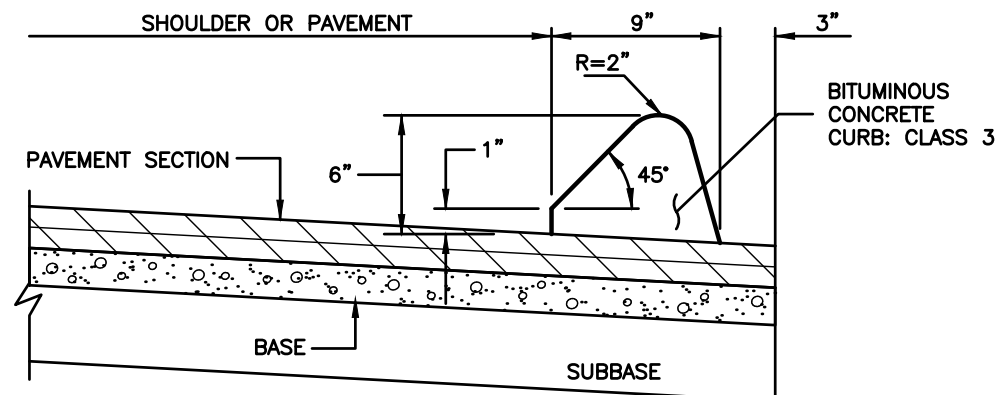
NOT TO SCALE

NOTES:
1. CONTRACTOR SHALL PROTECT EXCAVATIONS BY SHORING, BRACING, SHEET PILING, UNDERPINNING OR OTHER METHODS TO PREVENT CAVE-IN OR LOOSE SOIL FROM FALLING INTO THE EXCAVATION AND DAMAGING THE WORK OR ADJACENT STRUCTURES AND UTILITIES.



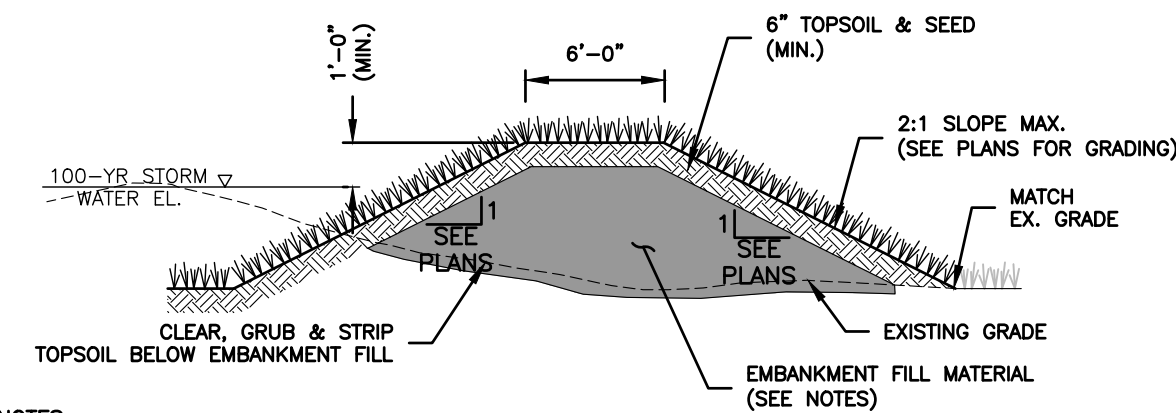
TYPICAL PAVEMENT SECTION DETAIL

NOT TO SCALE



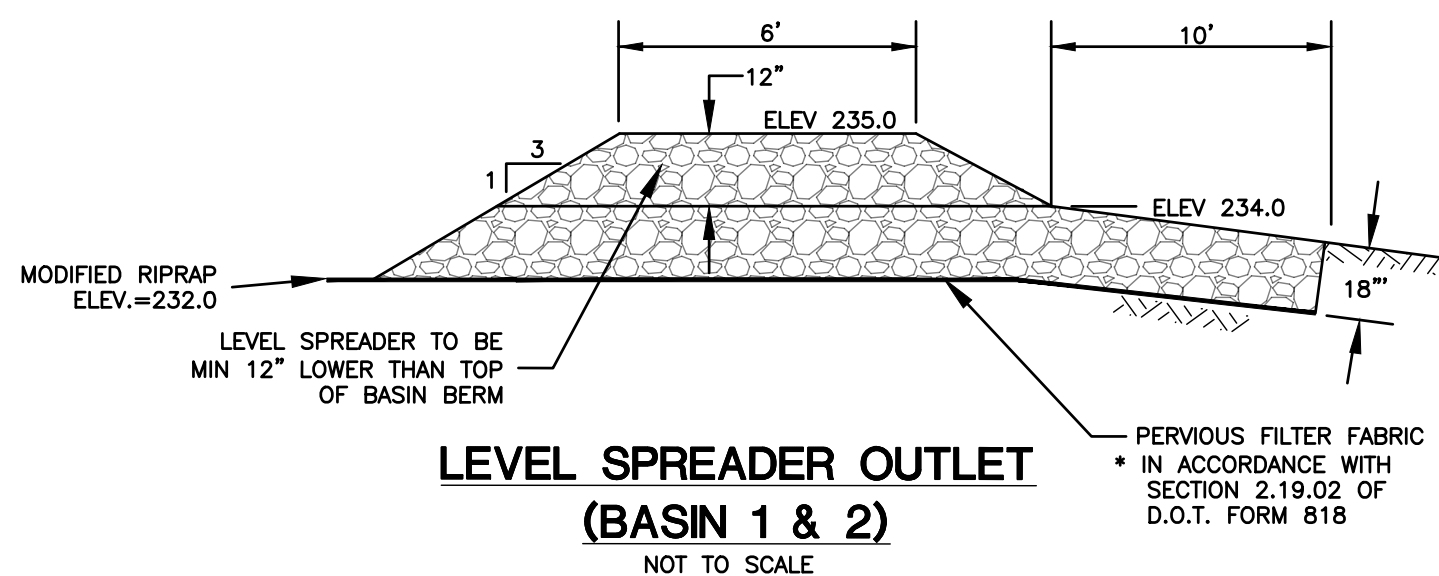
BITUMINOUS CONCRETE LIP CURBING

NOT TO SCALE



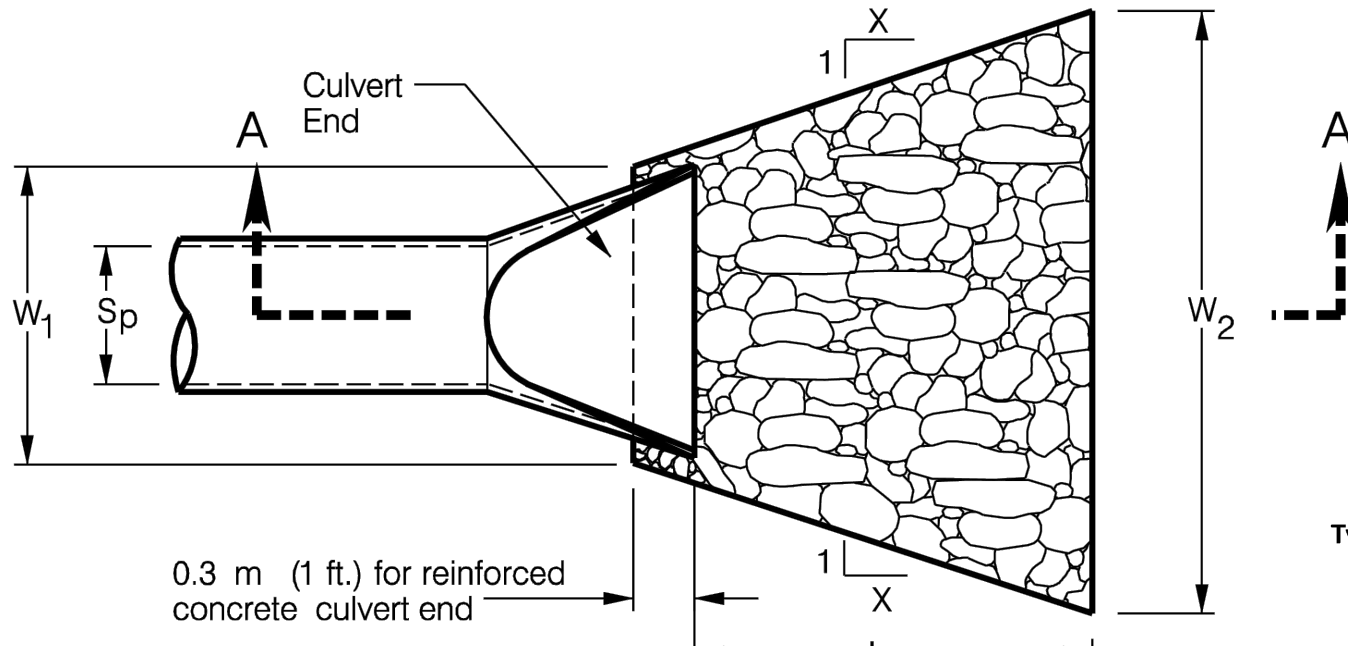
STORMWATER QUALITY BASIN EMBANKMENT FILL SECTION DETAIL

NOT TO SCALE



LEVEL SPREADER OUTLET (BASIN 1 & 2)

NOT TO SCALE

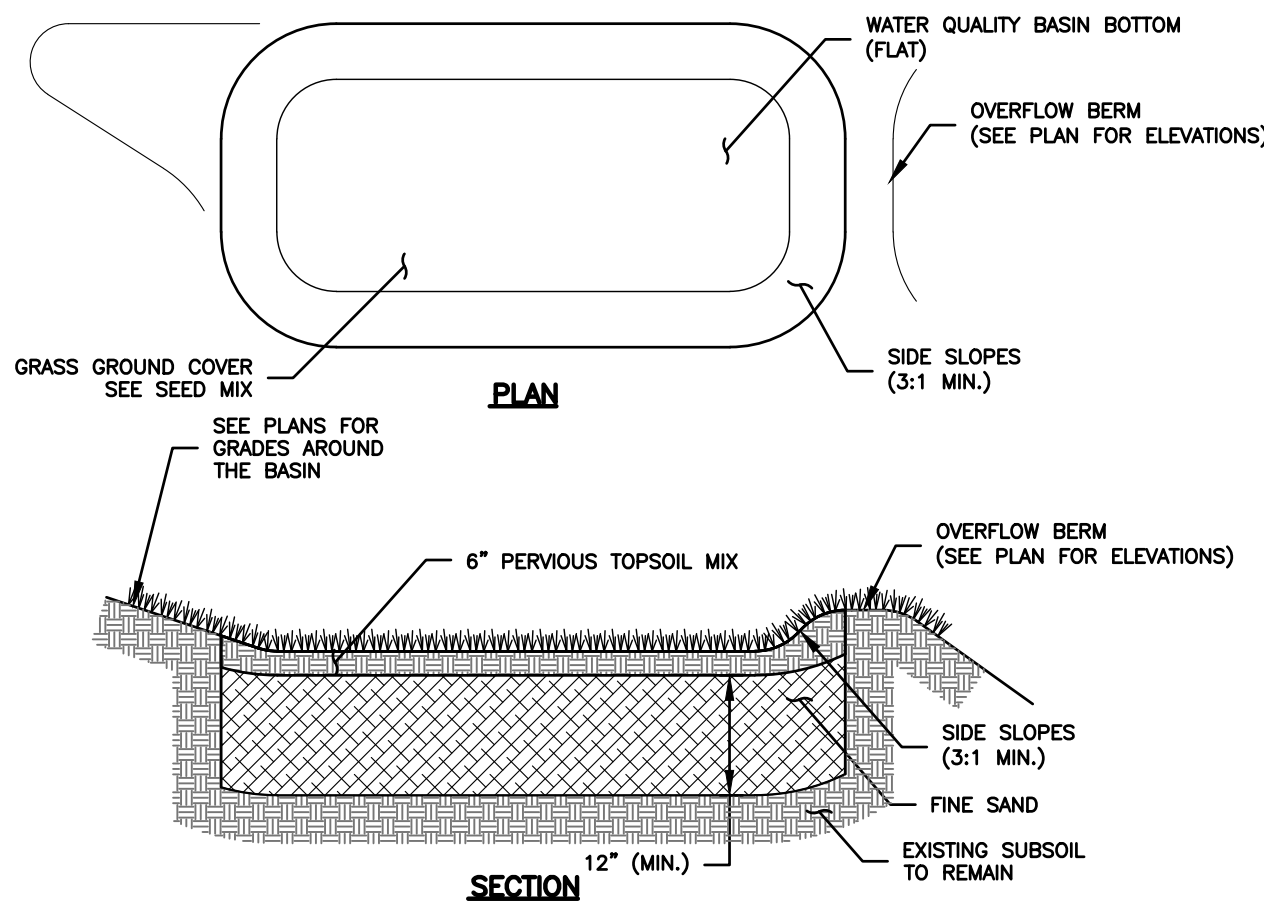


CULVERT END PLAN VIEW

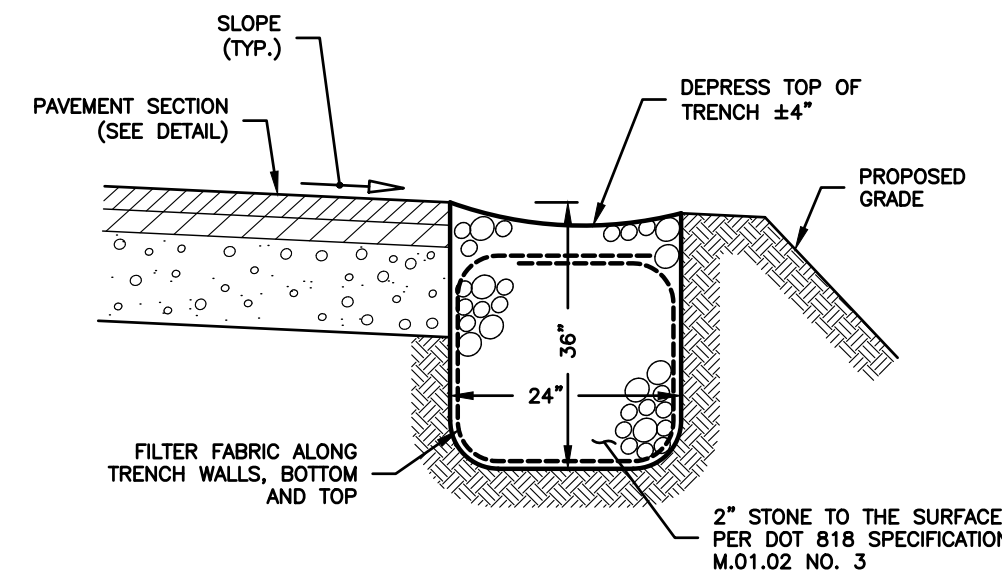
TYPE A - RIPRAP APRON

NOT TO SCALE

Type A (STANDARD SIZE RIP-RAP)	
Q=	71 cfs
Sp=	2.5 feet
La=	40.1 feet
W1=	7.5 feet
W2=	35.5 feet

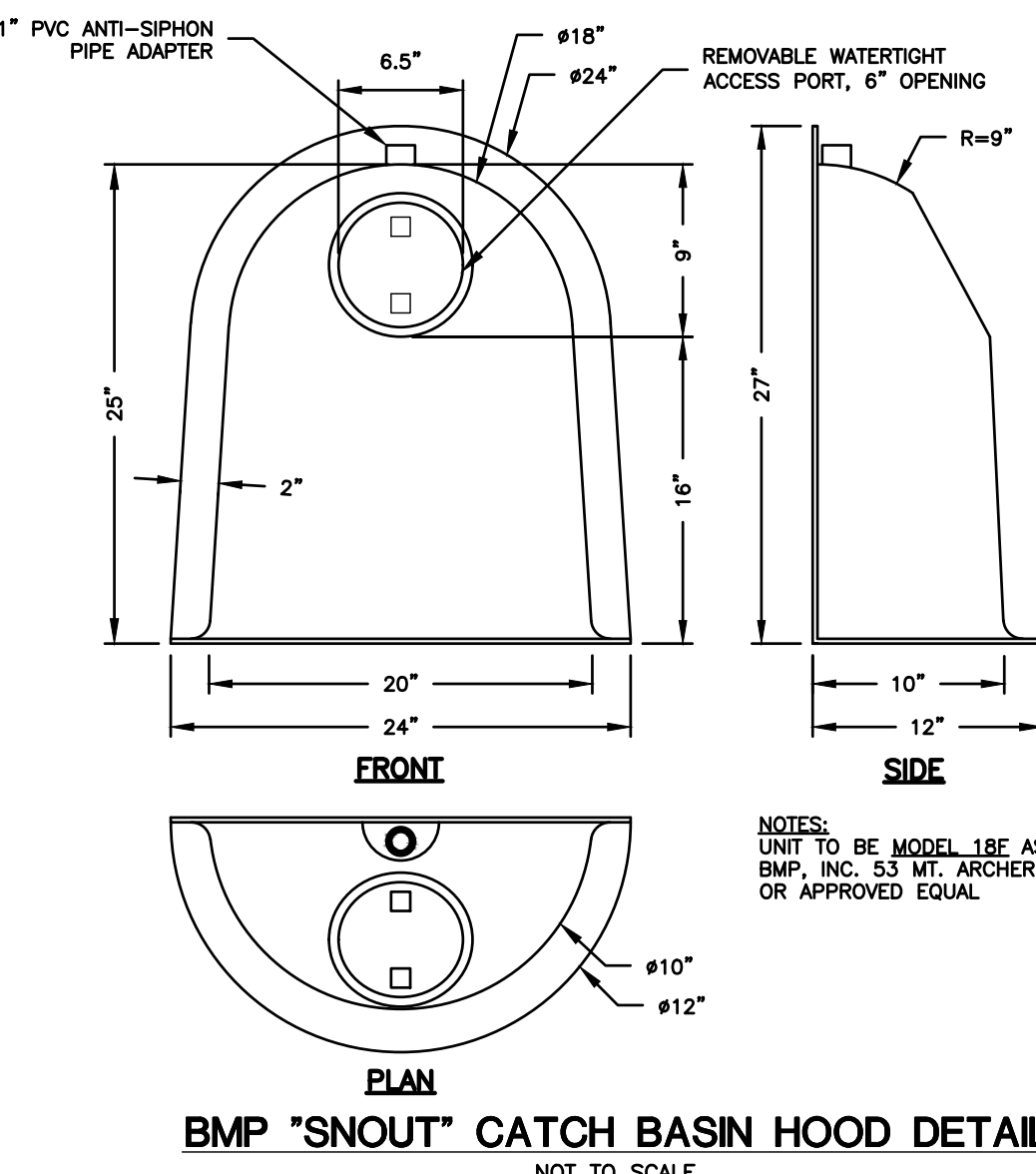


TYPICAL STORMWATER QUALITY BASIN DETAILS



STONE FILLED TRENCH

NOT TO SCALE



BMP "SNOUT" CATCH BASIN HOOD DETAIL

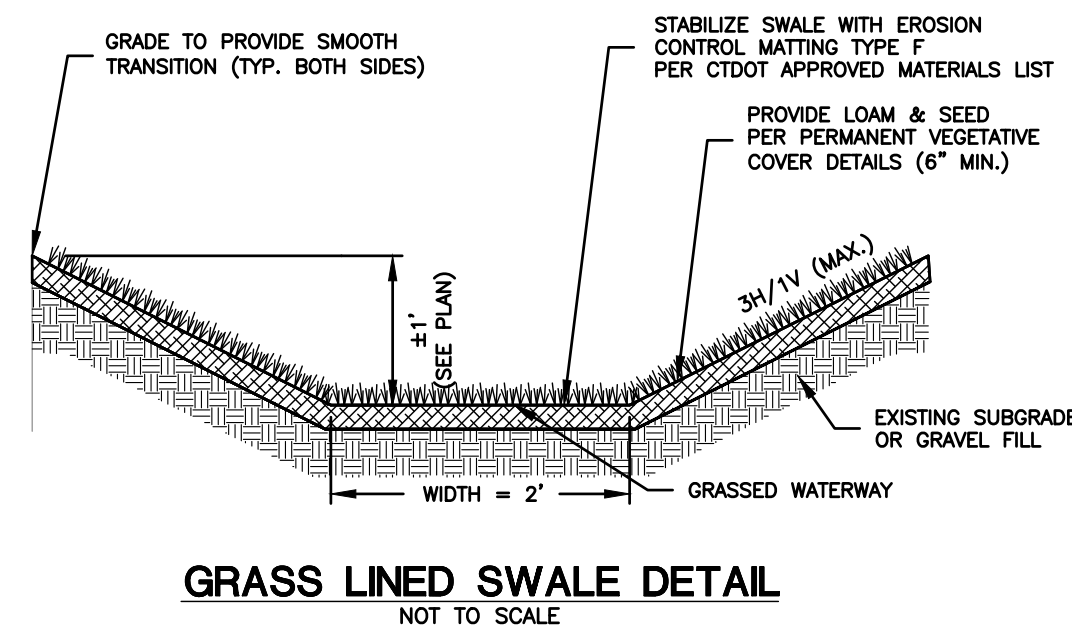
NOT TO SCALE

APPROVED BY THE LISBON PLANNING AND ZONING COMMISSION

FINAL APPROVAL: _____ DATE _____

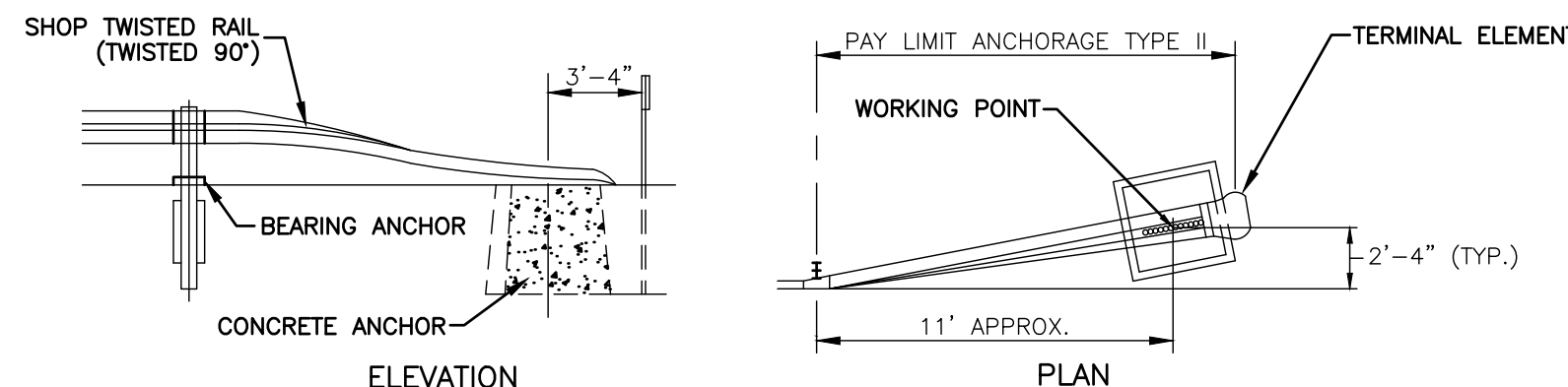
DATE OF APPROVAL: _____

EXPIRATION DATE: _____

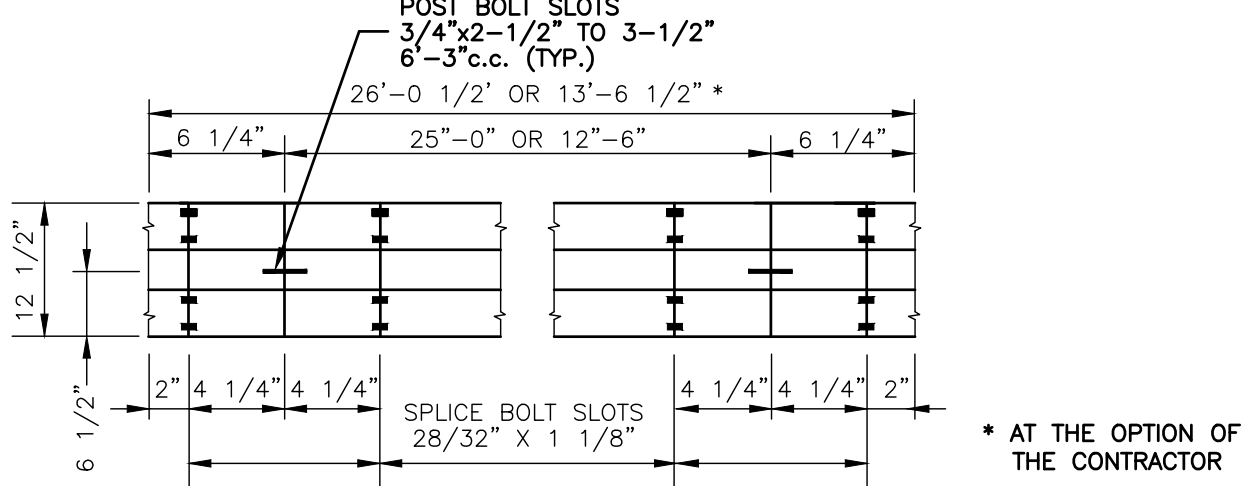


GRASS LINED SWALE DETAIL

NOT TO SCALE

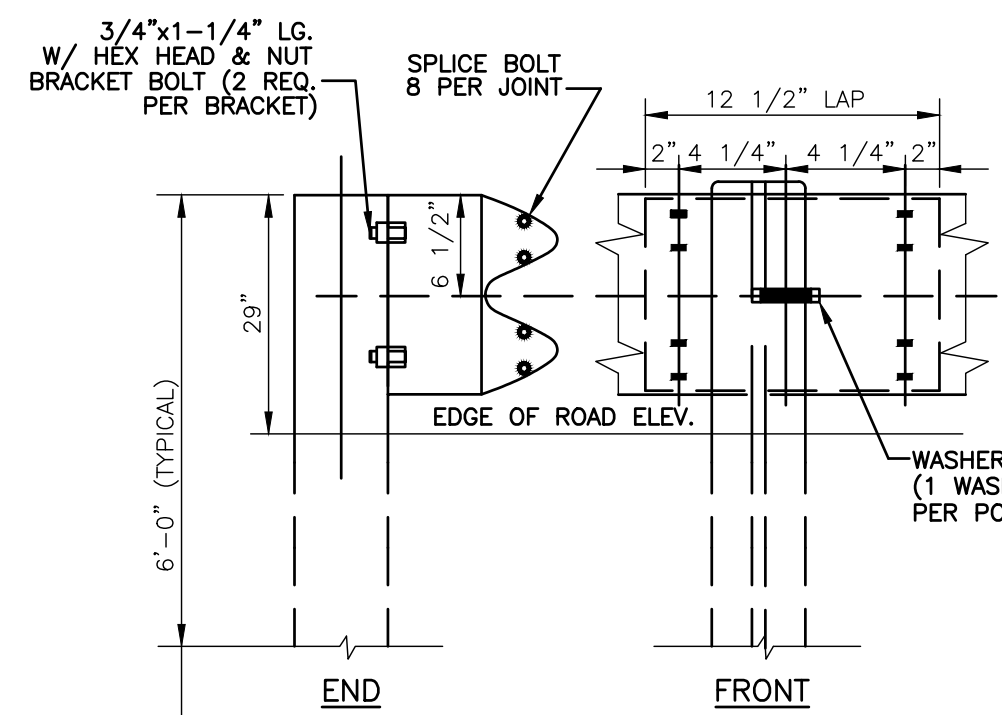


RB END ANCHORAGE - TYPE II



TYPICAL RAIL ELEMENT (GALVANIZED)

CLASS A (12 GA.)



METAL BEAM RAIL AND END ANCHORAGE

NOT TO SCALE

NOTES:
1. INSTALLATION OF RAIL AND ANCHORAGES TO BE IN ACCORDANCE WITH THE REQUIREMENTS OF CT DOT.
2. METAL BEAM RAIL TO BE DOT TYPE RB-350 PER DOT SPECIFICATIONS.
3. PROVIDE RB-TYPE II END ANCHORAGES PER DOT SPECIFICATIONS.

CLA Engineers, Inc. CIVIL • STRUCTURAL • SURVEYING 317 Main Street Norwich, CT 06360 (860) 886-1966 Fax (860) 886-9165				Project No. CLA-7787F
1	01/15/25	TOWN COMMENTS		Proj. Engineer D.P.H.
1	01/13/25	TOWN COMMENTS		Date: 12/16/24
No.	DATE	REVISION		Sheet No. 8
349 MAPLE AVE, LLC RAND-WHITNEY REALTY, LLC PROPOSED TRAILER STORAGE 375 MAPLE AVENUE & ROUTE 163 MONTVILLE, CT CONSTRUCTION DETAILS				

FOR
PERMITTING
ONLY
NOT FOR
CONSTRUCTION