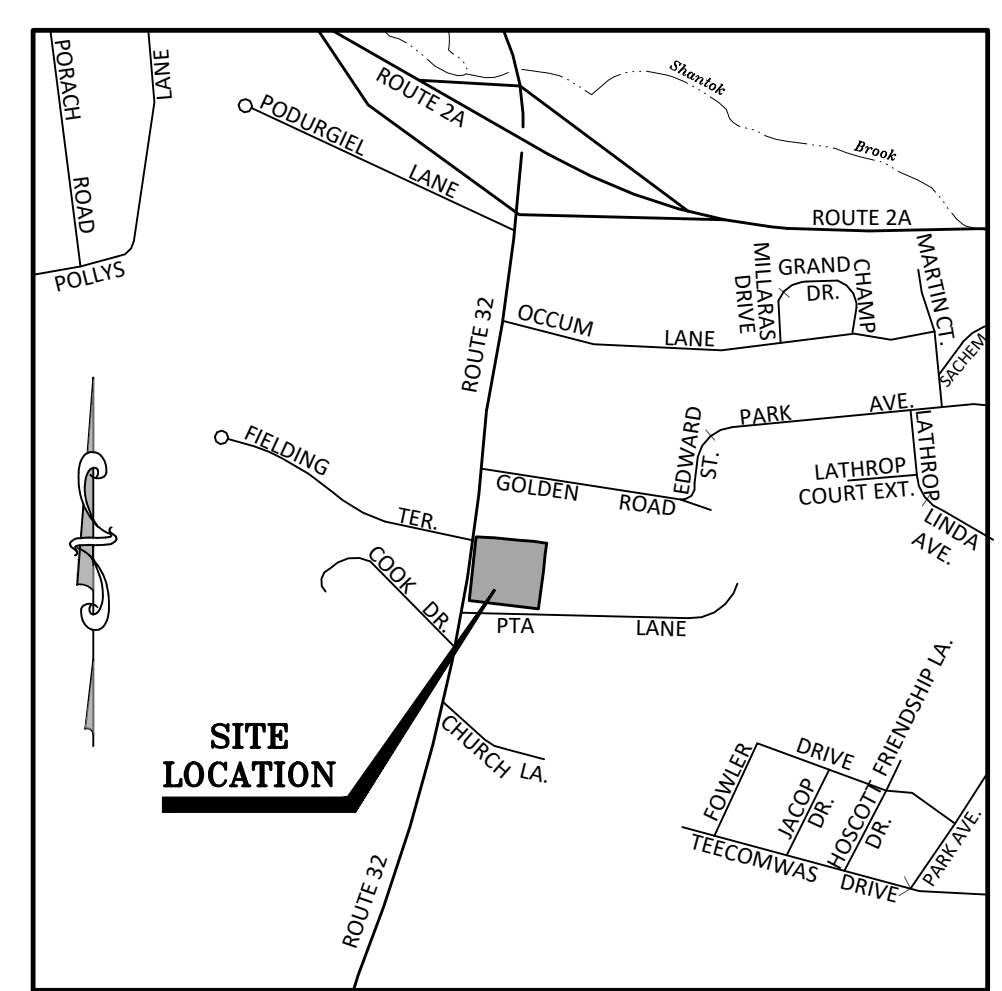
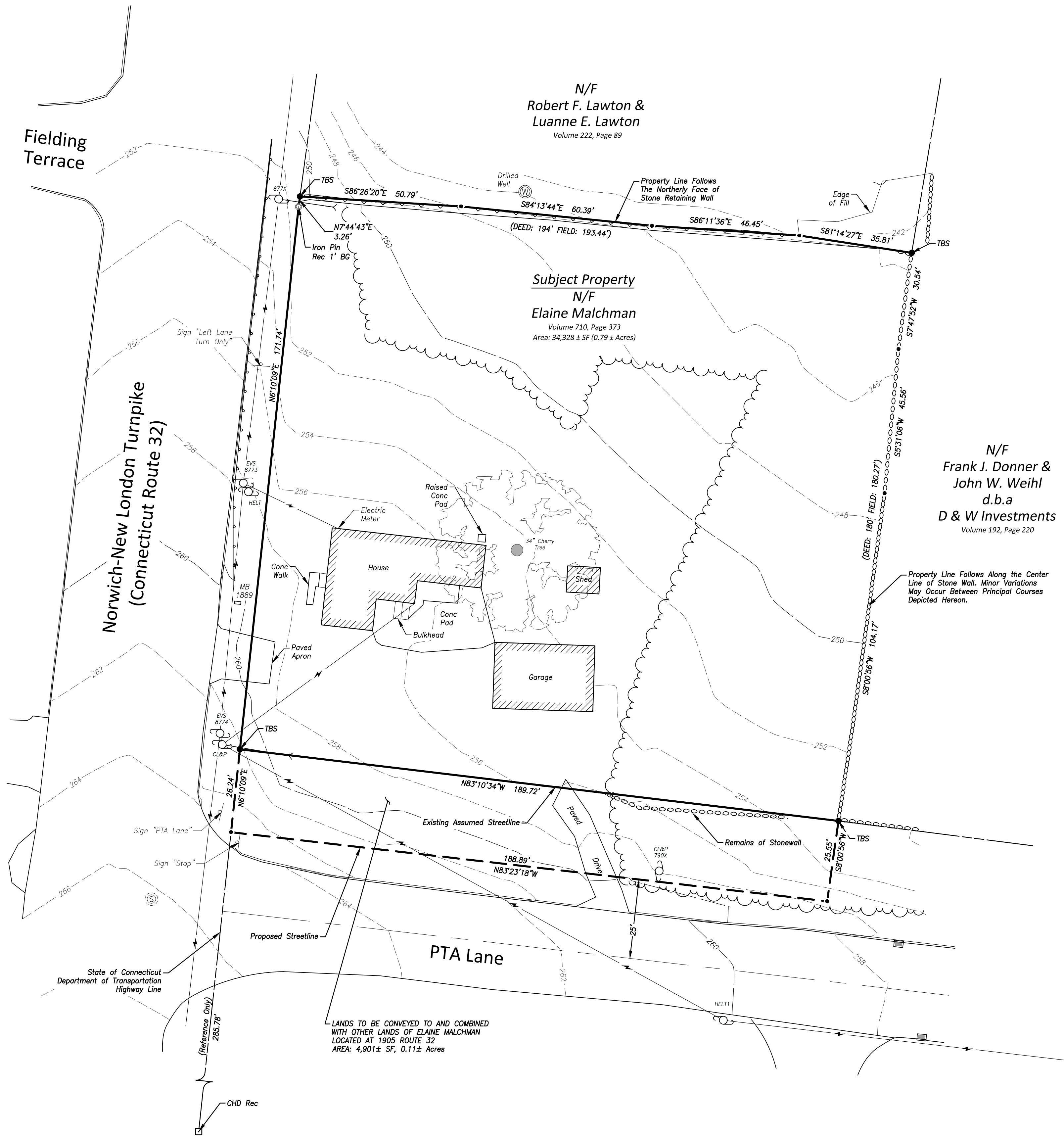


LEGEND & ABBREVIATIONS

±	MORE OR LESS	— 254	EXISTING CONTOUR
TYP	TYPICAL	—	TREE LINE
SF	SQUARE FEET	—	RETAINING WALL
SMH	SANITARY MANHOLE	—	STONE WALL
CB	CATCH BASIN	—	OVERHEAD WIRES
TF	TOP OF FRAME	—	SANITARY SEWER
TBS	TO BE SET	—	WATER
INV	INVERT	●	ANGLE POINT
MB	MAILBOX	○	IRON PIN
W/	WITH	⊙	DRILL HOLE
W/F	WOOD FRAME	□	MONUMENT
CONC	CONCRETE	—	UTILITY POLE
CHD	CONNECTICUT HIGHWAY DEPARTMENT	—	GUY WIRE
MON	MONUMENT	—	CATCH BASIN
REC	RECOVERED	—	SANITARY MANHOLE
EVS	EVERSOURCE	—	SIGN
CL&P	CONNECTICUT LIGHT AND POWER	—	WELL
N/F	NOW OR FORMERLY		
BG	BELOW GRADE		

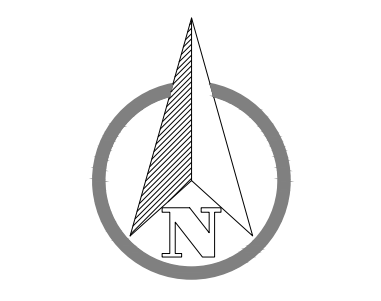
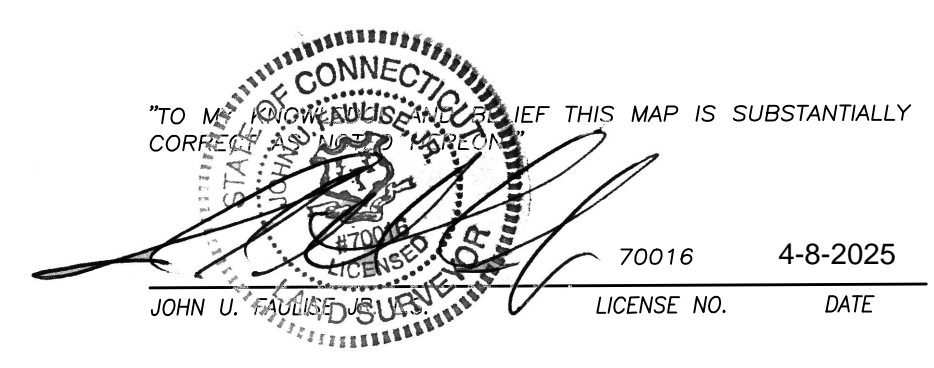
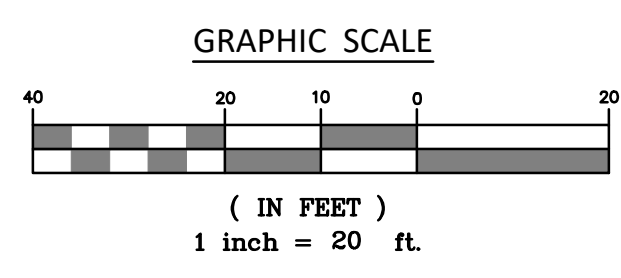


SURVEY NOTES

- THIS SURVEY HAS BEEN PREPARED PURSUANT TO THE REGULATIONS OF CONNECTICUT STATE AGENCIES SECTIONS 20-300B-1 THROUGH 20-300B-20 AND THE "STANDARDS AND SUGGESTED METHODS AND PROCEDURES FOR SURVEYS AND MAPS IN THE STATE OF CONNECTICUT" AS ADOPTED FOR USE BY THE CONNECTICUT ASSOCIATION OF LAND SURVEYORS, INC. ON AUGUST 29, 2019. IT IS A PROPERTY AND TOPOGRAPHIC SURVEY BASED BEING A FIRST SURVEY AND CONFORMS TO HORIZONTAL CLASS A-2 AND TOPOGRAPHIC CLASS T-2. IT IS INTENDED TO BE USED FOR PROPERTY LINE DELINEATION.
- NORTH ORIENTATION SHOWN HEREON IS APPROXIMATE NORTH AMERICAN DATUM 1983 (NAD83) BASED UPON GLOBAL POSITIONING SYSTEM OBSERVATIONS, OBSERVED ON JANUARY 31, 2025.
- VERTICAL DATUM SHOWN HEREON IS APPROXIMATE NORTH AMERICAN VERTICAL DATUM 1988 (NAVD88) BASED UPON GLOBAL POSITIONING SYSTEM OBSERVATIONS USING GEOID18 ON JANUARY 31, 2025.
- THE LOCATIONS OF UNDERGROUND UTILITIES AS SHOWN HEREON ARE BASED ON THE LOCATION OF ABOVE GROUND STRUCTURES AND RECORD DRAWINGS PROVIDED BY OTHERS. NO EXCAVATIONS WERE MADE DURING THE PROGRESS OF THIS SURVEY TO LOCATE BURIED UTILITIES/STRUCTURES. ALL SUBTERRANEAN FEATURES AND IMPROVEMENTS MAY NOT BE DEPICTED OR NOTED HEREON. THE LOCATIONS OF UNDERGROUND UTILITIES/STRUCTURES MAY VARY FROM LOCATIONS SHOWN HEREON. ADDITIONAL BURIED UTILITIES/STRUCTURES MAY BE ENCOUNTERED. CONTACT "CALL BEFORE YOU DIG" AT LEAST 72 HOURS PRIOR TO ANY EXCAVATION OPERATIONS.
- THE FIELD SURVEY WAS COMPLETED ON MARCH 10, 2025, LAND RECORD AND RELATED RESEARCH WAS COMPLETED ON JANUARY 14, 2025.
- RECORD TITLE TO THE SUBJECT PROPERTY MAY BE REFERENCED TO A WARRANTY DEED FROM LORETTA M. BARRIE TO ELAINE MALCHMAN RECORDED FEBRUARY 13, 2025 IN THE TOWN OF MONTVILLE LAND RECORDS VOLUME 710 PAGE 373.

REFERENCE MAPS

- CONNECTICUT STATE HIGHWAY DEPARTMENT RIGHT OF WAY MAP, TOWN OF MONTVILLE, NORWICH-NEW LONDON ROAD FROM THE MOHEGAN CHURCH ROAD NORTHERLY ABOUT 6,000 FEET ROUTE NO. 2, SCALE: 1"=40', DATE: 5-9-29, LAST REVISED: JUNE 10, 1959, SHEET 1 OF 3.
- SITE DEVELOPEMENT PLAN PROPERTY OF ROBERT F. LAWTON & LUANNE E. LAWTON, ROUTE 32, MONTVILLE, CONNECTICUT, DATE: JULY 6, 1990, SCALE: 1"=20', LAST REVISED: 10-18-90 BY CHANDLER PALMER & KING.



SCALE:	1" = 20'
DATE:	March 2025
JOB I.D. NO.:	24-3562
Revisions	
Rev. A 4-8-2025 Lands to be Conveyed to Elaine Malchman	

P:\CIVIL 3D PROJECTS\2024\24-3562 MALCHMAN\DWG\SURVEY\MALCHMAN-PROPERTY SURVEY W/TOPO REV A.DWG