

SEDIMENT & EROSION CONTROL NARRATIVE

THE SEDIMENT AND EROSION CONTROL PLAN WAS DEVELOPED TO PROTECT THE EXISTING ROADWAY AND STORM DRAINAGE SYSTEMS, ADJACENT PROPERTIES, AND ANY ADJACENT WETLAND AREA AND WATER COURSE FROM SEDIMENT LADEN SURFACE RUNOFF AND EROSION.

ALL CONSTRUCTION ACTIVITIES INVOLVING THE REMOVAL OR DISTURBANCE OF SOILS ARE TO BE PROVIDED WITH APPROPRIATE PROTECTIVE MEASURES TO MINIMIZE EROSION AND CONTAIN SEDIMENT DISPOSITION WITHIN THE AREA UNDER DEVELOPMENT. THE MINIMUM STANDARD FOR INDIVIDUAL MEASURES SHALL BE THOSE OUTLINED IN THE "CONNECTICUT GUIDELINES FOR SOIL EROSION AND SEDIMENTATION CONTROL," PUBLICATION DATE SEPTEMBER 30, 2003, EFFECTIVE DATE MARCH 30, 2024, AS AMENDED TO DATE. THOSE METHODS DEEMED MOST EFFECTIVE FOR THIS PROJECT ARE DESCRIBED HEREIN.

THE DIRECTIVES WITHIN THESE NOTES ARE GENERALIZED IN NATURE AND SOME MEASURES MAY NOT BE APPLICABLE TO THE SPECIFIC REQUIREMENTS OF THIS PROJECT. SEE THE OVERALL SOIL EROSION AND SEDIMENTATION CONTROL PLAN FOR THE SPECIFIC MEASURES REQUIRED.

CONSTRUCTION SCHEDULE

THE ANTICIPATED STARTING DATE FOR CONSTRUCTION IS SPRING/SUMMER 2025 WITH COMPLETION ANTICIPATED BY DECEMBER 2026. APPROPRIATE EROSION CONTROL MEASURES AS DESCRIBED HEREIN, SHALL BE INSTALLED BY THE CONTRACTOR PRIOR TO THE COMMENCEMENT OF ALL SITE CLEARING OR CONSTRUCTION ACTIVITY. SCHEDULE WORK TO MINIMIZE THE LENGTH OF TIME THAT BARE SOIL WILL BE EXPOSED, CONSTRUCTION SEQUENCE

1. INSTALLATION OF SEDIMENT AND EROSION CONTROLS AND SEDIMENT BASIN. (PHASING WILL DICTATE SPECIFIC MEASURES AS REQUIRED)
2. CLEARING AND GRUBBING OPERATIONS
3. INSTALLATION OF DIVERSION BERMS AND SEDIMENT BASIN
4. STRIPPING AND STOCKPILING OF TOPSOIL
5. REMOVAL OF SEDIMENT BASIN AND INSTALLATION OF LEVEL SPREADER
6. FINAL FILL OPERATIONS IF SUBSOIL IMPORT IS REQUIRED
7. FOUNDATION / BUILDING CONSTRUCTION
8. INSTALLATION OF SITE UTILITIES
9. INSTALLATION OF PAVEMENTS AND CURBING
10. INSTALLATION OF LANDSCAPE AND LIGHTING
11. SITE STABILIZATION
12. REMOVAL OF SEDIMENT AND EROSION CONTROLS AFTER APPROVAL BY THE ZONING ENFORCEMENT OFFICER.

CONTINGENCY EROSION PLAN

THE CONTRACTOR SHALL INSTALL ALL SPECIFIED EROSION CONTROL MEASURES AND WILL BE REQUIRED TO MAINTAIN THEM IN THEIR INTENDED FUNCTIONING CONDITION. THE AGENTS OF THE MUNICIPALITY, INLAND WETLANDS COMMISSION AND PROJECT ENGINEER SHALL HAVE THE AUTHORITY TO REQUIRE SUPPLEMENTAL MAINTENANCE OR ADDITIONAL MEASURES IF FIELD CONDITIONS ARE ENCOUNTERED BEYOND WHAT WOULD NORMALLY BE ANTICIPATED.

OPERATION REQUIREMENTS

CLEARING AND GRUBBING OPERATIONS:

1. ALL SEDIMENTATION AND EROSION CONTROL MEASURES, INCLUDING THE CONSTRUCTION OF TEMPORARY SEDIMENTATION TRAPS WILL BE INSTALLED PRIOR TO THE START OF CLEARING AND GRUBBING OPERATIONS.
2. FOLLOWING INSTALLATION OF ALL SEDIMENTATION AND EROSION CONTROL MEASURES, THE CONTRACTOR SHALL NOT PROCEED WITH GRADING, FILLING OR OTHER CONSTRUCTION OPERATIONS UNTIL THE ENGINEER AND ZONING ENFORCEMENT OFFICER HAS INSPECTED AND APPROVED ALL INSTALLATIONS.
3. THE CONTRACTOR SHALL TAKE EXTREME CARE DURING CLEARING AND GRUBBING OPERATIONS SO AS NOT TO DISTURB UNPROTECTED WETLAND AREAS OR SEDIMENTATION AND EROSION CONTROL DEVICES.
4. FOLLOWING THE COMPLETION OF CLEARING AND GRUBBING OPERATIONS, ALL AREAS SHALL BE STABILIZED WITH TOPSOIL AND SEEDING OR PROCESSED AGGREGATE STONE AS SOON AS PRACTICAL.

ROUGH GRADING OPERATIONS:

1. DURING THE REMOVAL AND/OR PLACEMENT OF EARTH AS INDICATED ON THE GRADING PLAN, TOPSOIL SHALL BE STRIPPED AND APPROPRIATELY STOCKPILED FOR REUSE.
2. ALL STOCKPILED TOPSOIL SHALL BE SEEDED, MULCHED WITH HAY, AND ENCLOSED BY A SILTATION FENCE.

FILLING OPERATIONS:

1. PRIOR TO FILLING, ALL SEDIMENTATION AND EROSION CONTROL DEVICES SHALL BE PROPERLY IMPLEMENTED, MAINTAINED AND FULLY INSTALLED, AS DIRECTED BY THE ENGINEER AND AS SHOWN ON THIS PLAN.
2. AS GENERAL GRADING OPERATIONS PROGRESS, ANY TEMPORARY DIVERSION DITCHES SHALL BE RAISED OR LOWERED, AS NECESSARY, TO DIVERT SURFACE RUNOFF TO THE SEDIMENT BASINS.

FINAL GRADING AND PAVING OPERATIONS:

1. NO CUT OR FILL SLOPES SHALL EXCEED 2:1 EXCEPT WHERE STABILIZED BY ROCK FACED EMBANKMENTS OR EROSION CONTROL BLANKETS, JUTE MESH AND VEGETATION. ALL SLOPES SHALL BE SEEDED, AND ANY ROAD OR DRIVEWAY SHOULDER AND BANKS SHALL BE STABILIZED IMMEDIATELY UPON COMPLETION OF FINAL GRADING UNTIL TURF IS ESTABLISHED.
2. PAVEMENT SUB-BASE AND BASE COURSES SHALL BE INSTALLED OVER AREAS TO BE PAVED AS SOON AS FINAL SUB-GRADES ARE ESTABLISHED AND UNDERGROUND UTILITIES AND STORM DRAINAGE SYSTEMS HAVE BEEN INSTALLED.
3. AFTER CONSTRUCTION OF PAVEMENT, TOPSOIL, FINAL SEED, MULCH AND LANDSCAPING, REMOVE ALL TEMPORARY EROSION CONTROL DEVICES ONLY AFTER ALL AREAS HAVE BEEN PAVED AND/OR GRASS HAS BEEN WELL ESTABLISHED AND THE SITE HAS BEEN INSPECTED AND APPROVED BY THE ZONING ENFORCEMENT OFFICER.

INSTALLATION OF SEDIMENTATION AND EROSION CONTROL MEASURES

- I. SILTATION FENCE:
 - A. DIG A SIX INCH TRENCH ON THE UPHILL SIDE OF THE DESIGNATED FENCE LINE LOCATION.
 - B. POSITION THE POST AT THE BACK OF THE TRENCH (DOWNHILL SIDE), AND HAMMER THE POST AT LEAST 1.5 FEET INTO THE GROUND.
 - C. LAY THE BOTTOM SIX INCHES OF THE FABRIC INTO THE TRENCH TO PREVENT UNDERMINING BY STORM WATER RUN-OFF.
 - D. BACKFILL THE TRENCH AND COMPACT.
- II. ANTI-TRACKING APRON (CONSTRUCTION ENTRANCE)
 - A. CLEAR THE ENTRANCE OF ALL VEGETATION, ROOTS AND OTHER OBJECTIONABLE MATERIAL.
 - B. INSTALL SUBSURFACE DRAINAGE AT POORLY DRAINED AREAS.
 - C. INSTALL GEOTEXTILE IN A DIRECTION PARALLEL TO THE ENTRANCE.
 - D. PLACE STONE IN THE SPECIFIED DIMENSIONS AND THICKNESS AS DETAILED.
 - E. IF ENTRANCE EXCEEDS 2% GRADIENT, CONSTRUCT A WATER BAR WITHIN THE CONSTRUCTION ENTRANCE AT A MINIMUM INTERVAL OF 15 FEET.
- III. HAY BALE BARRIER
 - A. EXCAVATE TRENCH AS WIDE AS THE BALES AND AT LEAST 4 INCHES DEEP.
 - B. WING EACH END OF TRENCH UPSLOPE SO THE BOTTOM OF LAST BALE IS HIGHER THAN THE LOWER BALE IN THE BARRIER.
 - C. PLACE BALES IN A SINGLE ROW LENGTHWISE WITH ENDS BUTTED TIGHTLY.
 - D. ANCHOR BALES WITH AT LEAST TWO STAKES DRIVEN 18 INCHES MINIMUM INTO THE GROUND.
 - E. BACKFILL BALES WITH EXCAVATED MATERIAL TO A MINIMUM DEPTH OF 4 INCHES ON THE UPHILL SIDE OF THE BALE.
- IV. SILT SACK
 - A. REMOVE GRATE FROM DRAINAGE STRUCTURE.
 - B. INSTALL SILT SACK PER MANUFACTURERS RECOMMENDATIONS.
 - C. INSPECT PERIODICALLY AND REMOVE ACCUMULATED MATERIALS AS NEEDED.
- V. DIVERSION BERMS

- A. REMOVE ALL TREES, BRUSH, STUMPS, OBSTRUCTIONS, AND OTHER OBJECTIONABLE MATERIAL
- B. EXCAVATE OR SHAPE TO THE LINE, GRADE, AND CROSS SECTION AS DETAILED ON THE PLAN.
- C. FILL VOIDS TO PREVENT UNEQUAL SETTLEMENT.
- D. STABILIZE AS DETAILED.

VI. SEDIMENT TRAPS

- A. CLEAR, GRUB, AND STRIP ANY VEGETATION AND ROOT MAT FROM ANY PROPOSED EMBANKMENT AND OUTLET AREA.
- B. REMOVE STONES AND ROCKS WITH A DIAMETER GREATER THAN 3 INCHES.
- C. EXCAVATE WET STORAGE AND CONSTRUCT EMBANKMENT AND/OR OUTLET AS REQUIRED TO ATTAIN THE SPECIFIED STORAGE REQUIREMENTS.
- D. USE ONLY FILL MATERIALS FREE FROM EXCESSIVE ORGANICS, DEBRIS, LARGE ROCKS OVER 6 INCHES, OR OTHER UNSUITABLE MATERIALS.
- E. COMPACT 9 INCH LAYERS WITH CONSTRUCTION EQUIPMENT.
- F. STABILIZE EMBANKMENTS AS SPECIFIED.

VII. CONSTRUCTION DITCH

- A. CONSTRUCT DITCH TO HAVE AN UNINTERRUPTED POSITIVE GRADE TO AN OUTLET.
- B. DIVERTED RUNOFF FROM A DISTURBED AREA SHALL TERMINATE AT A SEDIMENT TRAPPING DEVICE.
- C. REMOVE ALL TREES, BRUSH, STUMPS, OBSTRUCTIONS OR OTHER OBJECTIONABLE MATERIAL WHICH IS IN CONFLICT WITH THE SWALE.
- D. EXCAVATE, SHAPE TO LINE, GRADE, AND CROSS-SECTION AS REQUIRED TO BE FREE OF BANK PROJECTIONS OR OTHER IRREGULARITIES WHICH WILL IMPEDE NORMAL FLOW.
- E. COMPACT FILLS BY EARTH MOVING EQUIPMENT.
- F. STABILIZE FLOW CHANNEL PER DETAIL.
- G. INSPECT PERIODICALLY AND MAINTAIN AS REQUIRED.

VIII. CHECK DAM

- A. PLACE STONE ON FILTER FABRIC FOUNDATION TO THE LINES, GRADES, AND LOCATIONS SHOWN ON THE PLANS.
- B. SET SPACING OF CHECK DAMS TO ASSUME THAT ELEVATIONS OF THE CREST OF THE DOWNSTREAM DAM WILL BE AT THE SAME ELEVATION OF THE TOE OF THE UPSTREAM DAM.
- C. EXTEND THE STONE A MINIMUM OF 1.5 FEET BEYOND THE DITCH BANKS TO PREVENT CUTTING AROUND THE DAM.
- D. PROTECT THE CHANNEL DOWNSTREAM OF THE LOWEST CHECK DAM FROM SCOUR AND EROSION WITH STONE OR LINER AS APPROPRIATE.
- E. ENSURE THAT CHANNEL APPURTENANCES SUCH AS CULVERT ENTRANCES BELOW CHECK DAMS ARE NOT SUBJECT TO DAMAGE OR BLOCKAGE FROM DISPLACED STONE.

IX. EARTH DIKE

- A. COMPACT WITH EARTH-MOVING EQUIPMENT.
- B. CREATE WITH POSITIVE SLOPE FROM AN OUTLET
- C. CONSTRUCT WITH WIDER TOP AND FLATTER SIDE SLOPES TO FACILITATE CROSSING WITH CONSTRUCTION EQUIPMENT.

OPERATION AND MAINTENANCE OF SEDIMENTATION AND EROSION CONTROL MEASURES

I. SILTATION FENCE:

1. ALL SILTATION FENCES SHALL BE INSPECTED AS A MINIMUM WEEKLY OR AFTER EACH RAINFALL. ALL DETERIORATED FABRIC AND DAMAGED POSTS SHALL BE REPLACED AND PROPERLY REPOSITIONED IN ACCORDANCE WITH THIS PLAN.
2. SEDIMENT DEPOSITS SHALL BE REMOVED FROM BEHIND THE FENCE WHEN THEY EXCEED A HEIGHT OF ONE FOOT.

II. SEDIMENT TRAPS:

- A. CONTRACTOR TO KEEP WEEKLY CHECKLIST LOGS FOR INSPECTIONS OF ALL SEDIMENT AND EROSION CONTROL DEVICES AND HAVE THEM READILY AVAILABLE ON-SITE AT ALL TIMES FOR INSPECTION BY CT DEEP, LOCAL AUTHORITIES OR ENGINEER.
- B. ALL SEDIMENT BASINS SHALL BE INSPECTED FOLLOWING EACH RAINFALL. REPAIR OF SLOPES SHALL BE PROMPTLY MADE AS NEEDED. EROSION CONTROL BLANKETS MAY BE USED FOLLOWING REPAIR OF SLOPE AS DIRECTED BY THE ENGINEER.
- C. SEDIMENT DEPOSITS SHALL BE REMOVED FROM SEDIMENT BASINS AND/OR SEDIMENT TRAPS WHEN THEY EXCEED A HEIGHT OF ONE FOOT UNLESS OTHERWISE INDICATED ON THE EROSION CONTROL PLANS AND DETAILS TO BE AT A SPECIFIC ELEVATION PER CLEAN OUT MARKERS.

- D. SEDIMENT SHALL BE DISPOSED OF ON-SITE OR AS DIRECTED BY THE ENGINEER AND LOCAL GOVERNING OFFICIALS. SEE SEDIMENT AND EROSION CONTROL NOTES HEREIN REGARDING DISPOSAL REQUIREMENTS FOR OFF SITE SPOIL DISPOSAL.

III. CHECK DAMS:

- A. ALL STONE CHECK DAMS SHALL BE INSPECTED FOLLOWING EACH RAINFALL. REPAIR OF STONE CHECK DAMS SHALL BE PROMPTLY MADE AND ACCUMULATED SEDIMENT REMOVED WHEN IT REACHES ONE HALF OF THE HEIGHT OF THE CHECK DAM.

IV. TEMPORARY/PERMANENT DRAINAGE SWALES:

- A. SWALES SHALL BE INSPECTED FOLLOWING EACH RAINFALL. REPAIR OF ANY WASHED OUT OR ERODED SLOPES SHALL BE MADE PROMPTLY AND THE AREA SHALL BE RE-SEEDED AS NECESSARY.
- B. EROSION CONTROL BLANKETS MAY BE USED TO REPAIR ERODED SWALES AS DIRECTED BY THE ENGINEER OR MUNICIPALITY AGENT.

V. SILT SACKS

- A. MONITOR, MAINTAIN, REMOVE, OR REPLACE SILT SACK AS REQUIRED TO ASSURE FREE DRAINAGE INTO EXISTING DRYWELL.

VI. ANTI-TRACKING APRONS

- A. MAINTAIN FUNCTIONALITY OF ANTI-TRACKING APRON THROUGHOUT THE CONSTRUCTION PERIOD.
- B. REMOVE AND DISPOSE OF ACCUMULATED SEDIMENTS IMMEDIATELY IF THIS MEASURE SHOWS SIGNS NON-FUNCTIONALITY.

EROSION AND SEDIMENT CONTROL PLAN

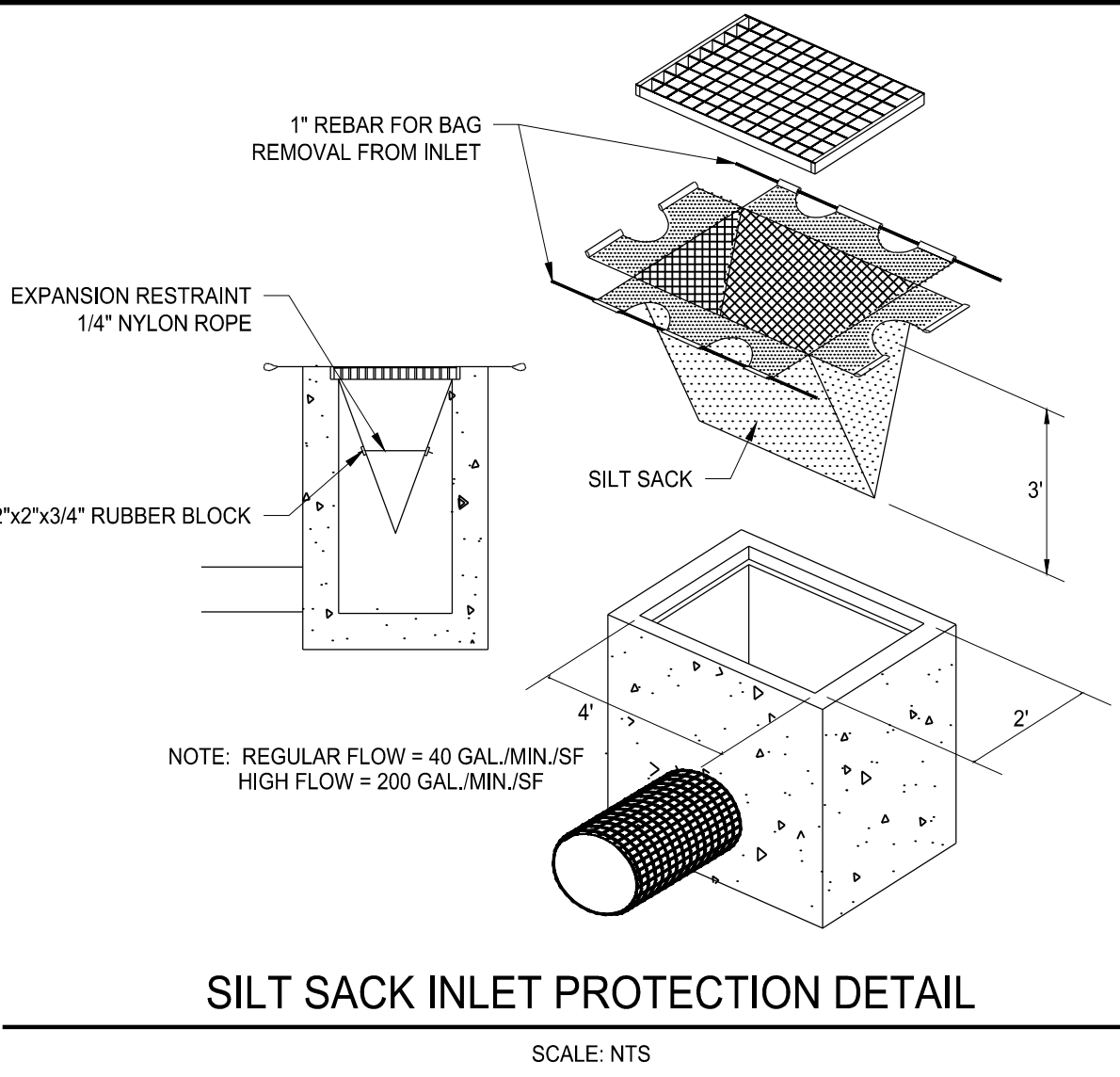
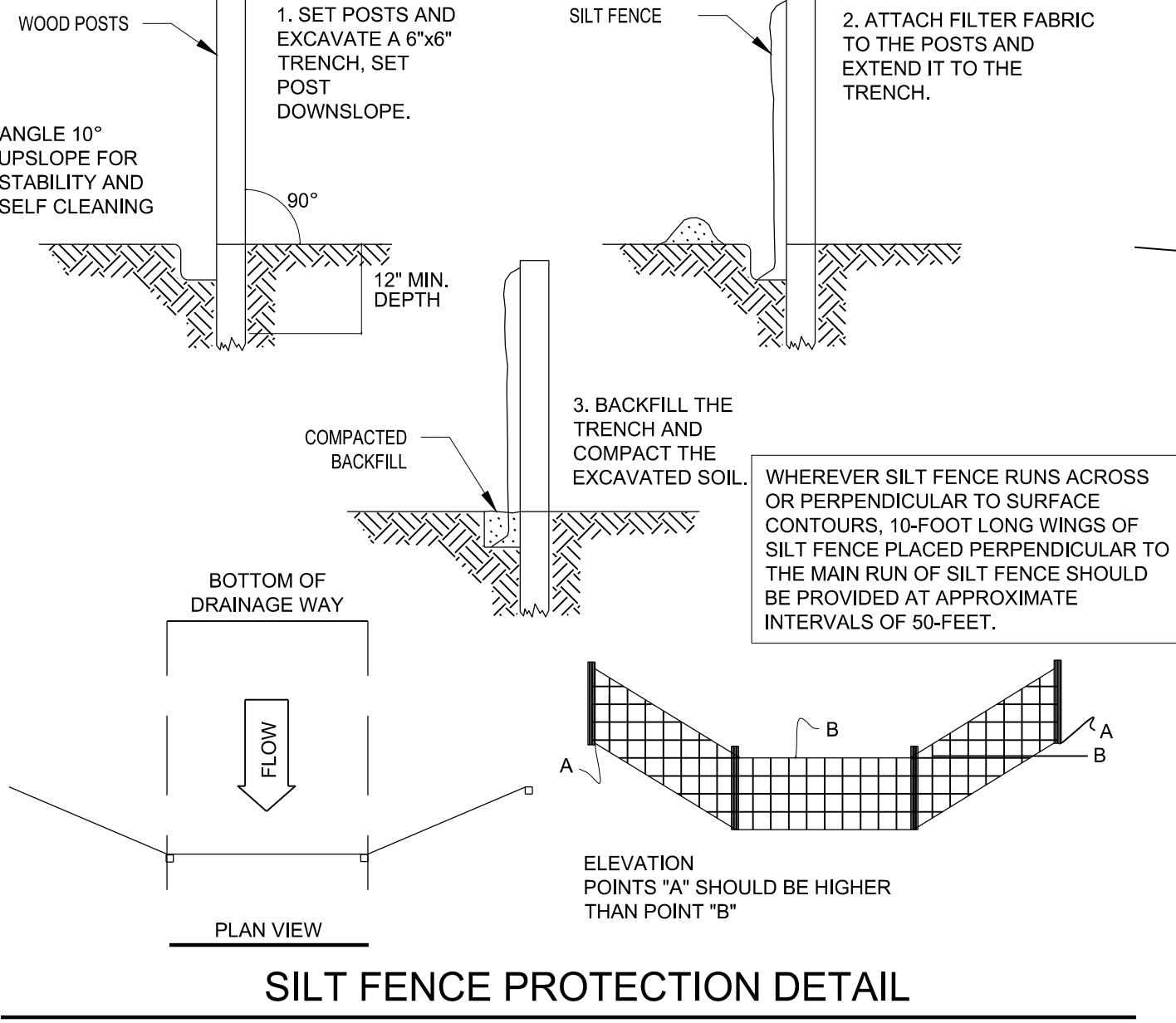
1. SILTATION FENCE WILL BE INSTALLED AT ALL CULVERT OUTLETS IF CULVERT OUTLETS ARE APPLICABLE TO THIS PROJECT AND ALONG THE TOE OF ALL CRITICAL CUT AND FILL SLOPES.
2. CULVERT DISCHARGE AREAS WILL BE PROTECTED WITH RIP RAP CHANNELS. ENERGY DISSIPATERS WILL BE INSTALLED AS SHOWN ON THESE PLANS AND AS NECESSARY.
3. ALL EROSION AND SEDIMENT CONTROL MEASURES WILL BE INSTALLED IN ACCORDANCE WITH THE STANDARDS AND SPECIFICATIONS OF THE CONNECTICUT GUIDELINES FOR SOIL EROSION AND SEDIMENT CONTROL MANUAL, LATEST EDITION.
4. EROSION AND SEDIMENT CONTROL MEASURES WILL BE INSTALLED PRIOR TO CONSTRUCTION WHENEVER POSSIBLE.
5. ALL CONTROL MEASURES WILL BE MAINTAINED IN EFFECTIVE CONDITION THROUGHOUT THE CONSTRUCTION PERIOD.
6. ADDITIONAL CONTROL MEASURES WILL BE INSTALLED DURING THE CONSTRUCTION PERIOD, IF NECESSARY OR REQUIRED OR AS DIRECTED BY THE CIVIL ENGINEER OR BY LOCAL GOVERNING OFFICIALS.
7. SEDIMENT REMOVED FROM EROSION CONTROL STRUCTURES WILL BE DISPOSED IN A MANNER WHICH IS CONSISTENT WITH THE INTENT AND REQUIREMENTS OF THE EROSION CONTROL PLANS, NOTES, AND DETAILS.

SEDIMENT AND EROSION CONTROL NOTES

1. THE OWNER IS RESPONSIBLE FOR IMPLEMENTING THIS SEDIMENT AND EROSION CONTROL PLAN. THIS RESPONSIBILITY INCLUDES THE PROPER INSTALLATION AND MAINTENANCE OF EROSION CONTROL MEASURES, INFORMING ALL PARTIES ENGAGED WITH CONSTRUCTION ON THE SITE OF THE REQUIREMENTS AND OBJECTIVES OF THIS PLAN, INFORMING THE GOVERNING AUTHORITY OR INLAND WETLANDS AGENCY OF ANY TRANSFER OF THIS RESPONSIBILITY, AND FOR CONVEYING A COPY OF THE SEDIMENT & EROSION CONTROL PLAN IF THE TITLE TO THE LAND IS TRANSFERRED.
2. AN EROSION CONTROL BOND MAY BE REQUIRED TO BE POSTED WITH THE MUNICIPALITY TO ENSURE IMPLEMENTATION OF THE EROSION CONTROL MEASURES. THE CONTRACTOR SHALL BE RESPONSIBLE FOR THE POSTING OF THIS BOND AND FOR INQUIRIES TO THE MUNICIPALITY FOR INFORMATION ON THE METHOD, TYPE AND AMOUNT OF THE BOND POSTING UNLESS OTHERWISE DIRECTED BY THE OWNER.
3. VISUAL SITE INSPECTIONS SHALL BE CONDUCTED WEEKLY, AND AFTER EACH MEASURABLE PRECIPITATION EVENT OF 0.10 INCHES OR GREATER BY QUALIFIED PERSONNEL, TRAINED AND EXPERIENCED IN EROSION AND SEDIMENT CONTROL, TO ASCERTAIN THAT THE EROSION AND SEDIMENT CONTROL (E&S) BMPs ARE OPERATIONAL AND EFFECTIVE IN PREVENTING POLLUTION. A WRITTEN REPORT OF

EACH INSPECTION SHALL BE KEPT, AND INCLUDE:

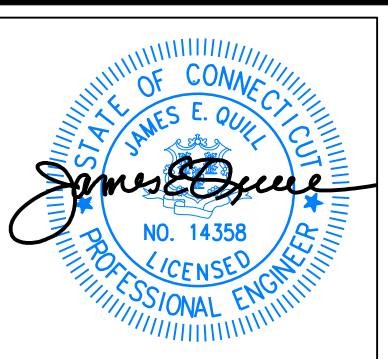
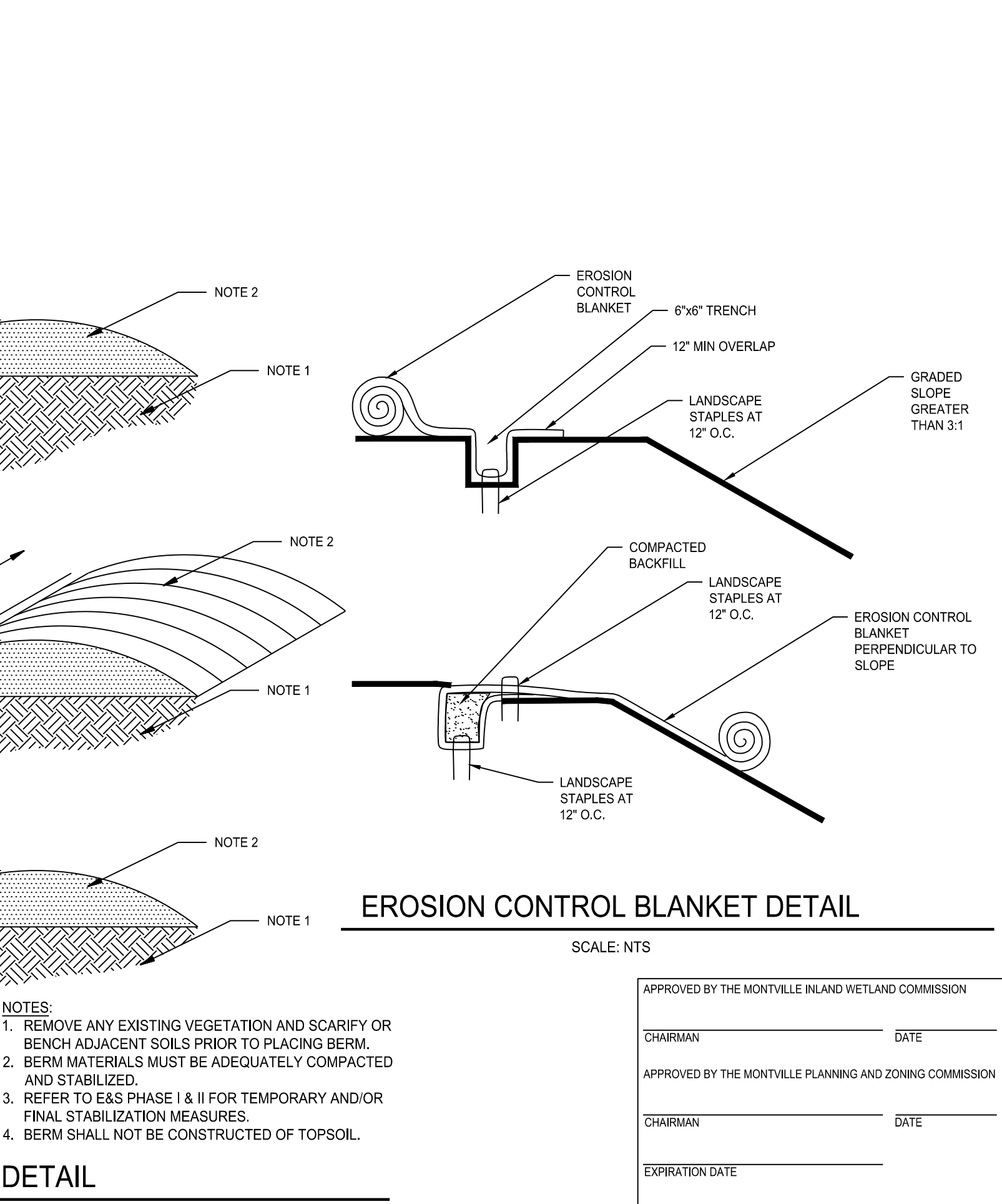
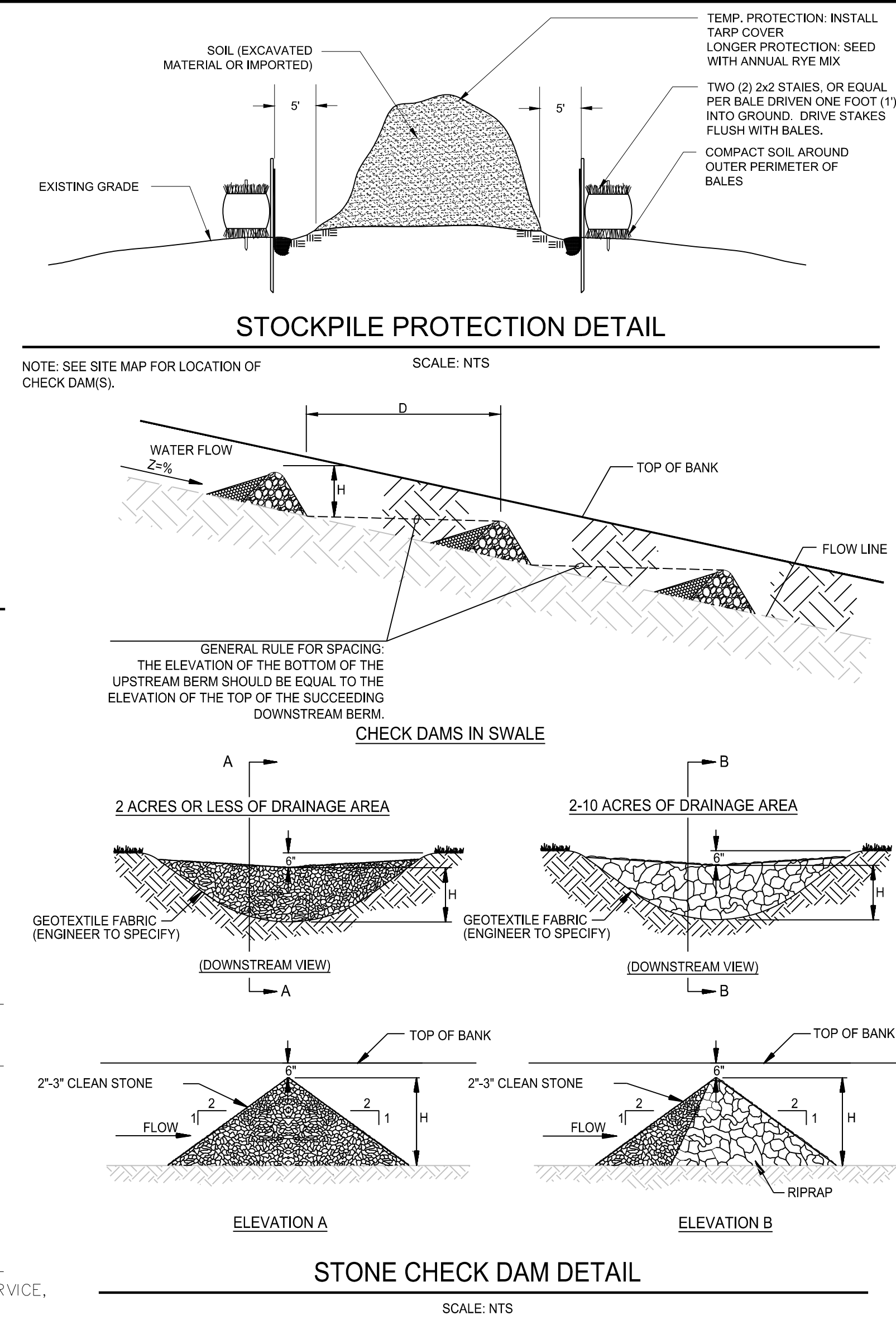
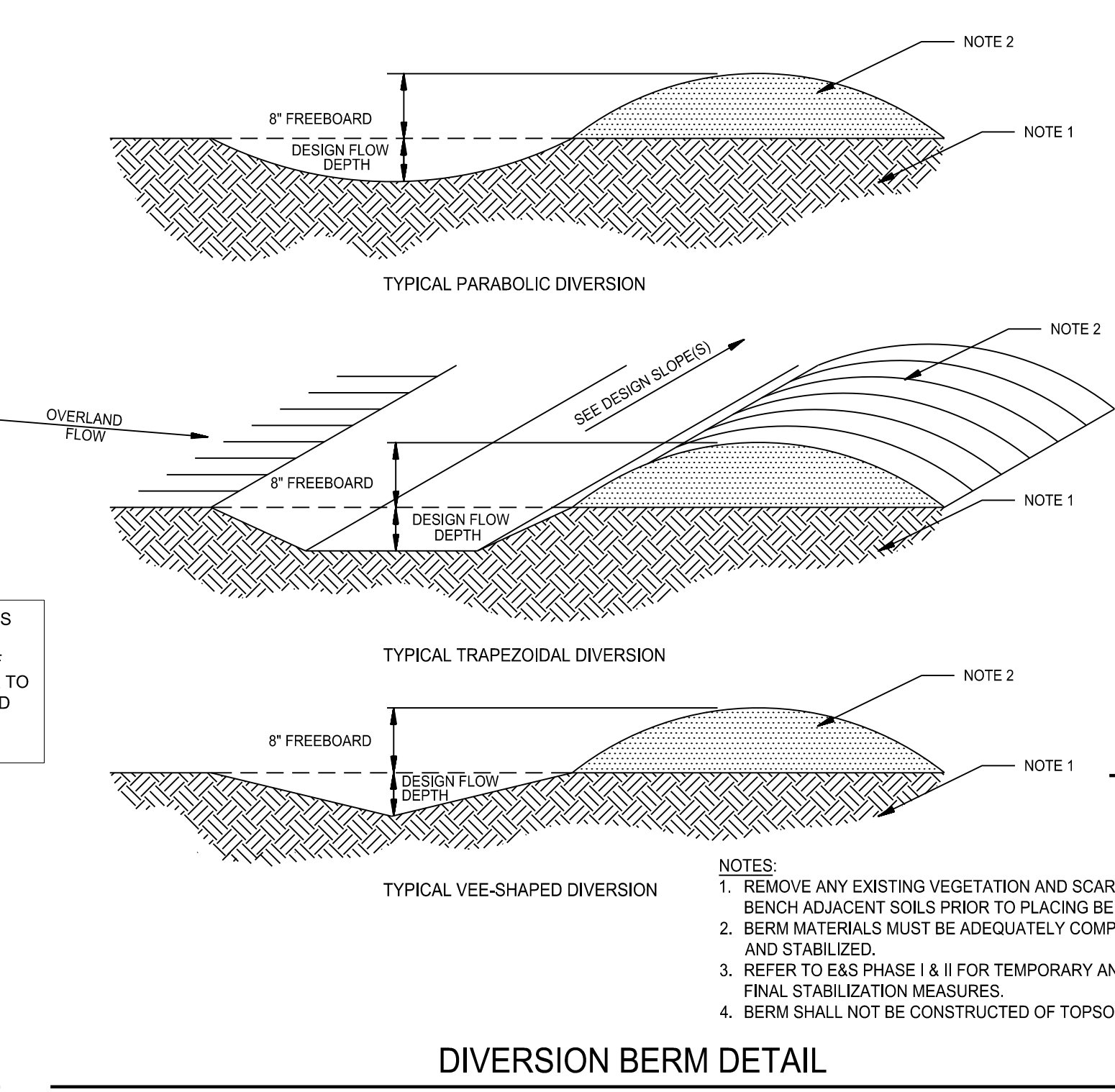
- A) A SUMMARY OF THE SITE CONDITIONS, E&S BMPs, AND COMPLIANCE; AND
 - B) THE DATE, TIME, AND THE NAME OF THE PERSON CONDUCTING THE INSPECTION
4. THE CONTRACTOR SHALL CONSTRUCT ALL SEDIMENT AND EROSION CONTROLS IN ACCORDANCE WITH THE CONNECTICUT GUIDELINES FOR SOIL EROSION AND SEDIMENT CONTROL, PREPARED BY CTDEP, LATEST EDITION IN ACCORDANCE WITH THE CONTRACT DOCUMENTS, AND AS DIRECTED BY THE MUNICIPALITY. THE CONTRACTOR SHALL KEEP A COPY OF THE GUIDELINES ON-SITE FOR REFERENCE DURING CONSTRUCTION.
 5. ADDITIONAL AND/OR ALTERNATIVE SEDIMENT AND EROSION CONTROL MEASURES MAY BE INSTALLED DURING THE CONSTRUCTION PERIOD IF FOUND NECESSARY BY THE CONTRACTOR, OWNER, CIVIL ENGINEER, THE MUNICIPALITY, EASTERN CONNECTICUT SOILS CONSERVATION DISTRICT, INLAND WETLANDS COMMISSION, OR GOVERNING AGENCIES. THE CONTRACTOR SHALL CONTACT THE OWNER AND APPROPRIATE GOVERNING AGENCIES FOR APPROVAL IF ALTERNATIVE CONTROLS OTHER THAN THOSE SHOWN ON THE PLANS ARE PROPOSED.
 6. THE CONTRACTOR SHALL INSPECT ALL SEDIMENT AND EROSION CONTROLS BEFORE AND AFTER EACH STORM (0.10 INCHES OR GREATER RAINFALL), OR AT LEAST WEEKLY, TO VERIFY THAT THE CONTROLS ARE OPERATING PROPERLY AND MAKE REPAIRS WHERE NECESSARY.
 7. THE CONTRACTOR SHALL KEEP A SUPPLY OF EROSION CONTROL MATERIAL (HAY BALES, SILT FENCE, JUTE MESH, RIP RAP ETC.) ON-SITE FOR MAINTENANCE AND EMERGENCY REPAIRS.
 8. INSTALL PERIMETER SEDIMENT CONTROLS PRIOR TO CLEARING OR CONSTRUCTION. ALL CONSTRUCTION SHALL BE CONTAINED WITHIN THE LIMIT OF DISTURBANCE (LOD), WHICH SHALL BE MARKED WITH SILT FENCE, SAFETY FENCE, HAY BALES, RIBBONS, OR OTHER MEANS PRIOR TO CLEARING. CONSTRUCTION ACTIVITY SHALL REMAIN ON THE UPHILL SIDE OF THE SILT FENCE UNLESS WORK IS SPECIFICALLY CALLED FOR ON THE DOWNHILL SIDE OF THE FENCE.
 9. TOPSOIL SHALL BE STRIPPED AND STOCKPILED FOR USE IN FINAL LANDSCAPING. ALL EARTH STOCKPILES SHALL HAVE HAY BALES OR SILT FENCE AROUND THE LIMIT OF PILE. PILES SHALL BE TEMPORARILY SEEDED IF PILE IS TO REMAIN IN PLACE FOR MORE THAN 7 DAYS.
 10. SEDIMENTATION TRAPS SHALL PROVIDE 134 CUBIC YARDS OF SEDIMENT STORAGE PER DISTURBED ACRE CONTRIBUTING TO THE TRAP. PROVIDE TRAP VOLUMES FOR ALL DISTURBANCE ON SITE IF SPECIFIED.
 11. MINIMIZE LAND DISTURBANCES. SEED AND MULCH DISTURBED AREAS WITH TEMPORARY MIX AS SOON AS PRACTICABLE (2 WEEK MAXIMUM UNSTABILIZED PERIOD) USING PERENNIAL RYEGRASS AT 40 LBS PER ACRE. MULCH ALL CUT AND FILL SLOPES AND SWALES WITH LOOSE HAY AT A RATE OF 2 TONS PER ACRE. IF NECESSARY, REPLACE LOOSE HAY ON SLOPES WITH EROSION CONTROL BLANKETS OR JUTE CLOTH. MODERATELY GRADED AREAS, ISLANDS, AND TEMPORARY CONSTRUCTION STAGING AREAS MAY BE HYDROSEED WITH TACKIFIER.
 12. EXCAVATED MATERIAL FROM TEMPORARY SILT TRAPS MUST BE STOCKPILED ON UPHILL SIDE OF SILT FENCE.
 13. INSTALL SILT FENCE ACCORDING TO MANUFACTURER'S INSTRUCTION. PARTICULARLY, BURY LOWER EDGE OF FABRIC INTO GROUND PRIOR TO ANY WORK IN UPLAND AREAS. SILT FENCE SHALL BE MIRAFI ENVIRONMENTAL AMCOO SILT STOP OR EQUIVALENT APPROVED BY THE CIVIL ENGINEER. FILTER FABRIC USED SHALL BE MIRAFI 100X OR EQUIVALENT. SEE SPECIFICATIONS FOR FURTHER INFORMATION.
 14. WHERE INDICATED ON EROSION CONTROL PLANS USE NEW HAY BALES AND REPLACE THEM WHENEVER THEIR CONDITION DETERIORATES BEYOND REASONABLE USABILITY. STAKE HAY BALES SECURELY INTO GROUND AND BUTT TIGHTLY TOGETHER TO PREVENT UNDERCUTTING AND BYPASSING.
 15. INSTALL TEMPORARY DIVERSION DITCHES, PLUNGE POOLS, SEDIMENT TRAPS, AND DEWATERING PITS AS SHOWN AND AS NECESSARY DURING VARIOUS PHASES OF CONSTRUCTION TO CONTROL RUNOFF UNTIL UPHILL AREAS ARE STABILIZED. LOCATE/ABANDON TEMPORARY SEDIMENT TRAPS WHEN REQUIRED REVIEW AND APPROVAL BY THE CIVIL ENGINEER AND GOVERNING OFFICIAL.
 16. BLOCK THE OPEN UPSTREAM ENDS OF DETENTION BASIN/SEDIMENTATION BASIN OUTLET CONTROL OFFICE UNTIL SITE IS STABILIZED. CONVERT TEMPORARY SEDIMENT BASINS TO PERMANENT DETENTION BASINS ONCE SITE HAS BEEN STABILIZED. CLEAN OUTLET CONTROL STRUCTURES AS NECESSARY AND REMOVE ACCUMULATED SEDIMENT FROM BOTTOM OF BASIN. BLOCK END OF STORM SEWERS IN EXPOSED TRENCHES WITH BOARDS AND SANDBAGS AT THE END OF EACH WORKING DAY WHEN RAIN IS EXPECTED.
 17. SWEEP AFFECTED PORTIONS OF OFF SITE ROADS ONE OR MORE TIMES A DAY (OR LESS FREQUENTLY IF TRACKING IS NOT A PROBLEM) DURING CONSTRUCTION. OTHER DUST CONTROL MEASURES TO BE USED AS NECESSARY INCLUDE WATERING DOWN DISTURBED AREAS, USING CALCIUM CHLORIDE, AND COVERING LOADS ON DUMP TRUCKS.
 18. PERIODICALLY CHECK ACCUMULATED SEDIMENT LEVELS IN THE SEDIMENT TRAPS DURING CONSTRUCTION AND CLEAN ACCUMULATED SILT WHEN NECESSARY OR WHEN ONE FOOT OF SEDIMENT HAS ACCUMULATED OR PER SPECIFIC CLEANOUT MARKER ELEVATION. REMOVE ACCUMULATED SEDIMENT FROM BEHIND SILT FENCE WHEN LEVEL REACHES HALF THE HEIGHT OF THE HAY BALE OR ONE FOOT AT SILT FENCE. DISPOSE OF SEDIMENT LEGALLY EITHER ON OR OFF SITE.
 19. IMMEDIATELY UPON DISCOVERING UNFORESEEN CIRCUMSTANCES POSING THE POTENTIAL FOR ACCELERATED EROSION AND/OR SEDIMENT POLLUTION, THE OPERATOR SHALL IMPLEMENT APPROPRIATE BEST MANAGEMENT PRACTICES (BMP) TO ELIMINATE THE POTENTIAL FOR ACCELERATED EROSION AND/OR SEDIMENT POLLUTION.
 20. ALL EXCAVATED MATERIAL SHALL BE PLACED ON THE HIGH SIDE OF UTILITY AND STORM PIPE TRENCHES SO AS TO ALLOW THE TRENCH TO INTERCEPT ALL SILT LADEN RUNOFF.
 21. AN AREA SHALL BE CONSIDERED TO HAVE ACHIEVED FINAL STABILIZATION WHEN IT HAS A MINIMUM OF 70% UNIFORM PERENNIAL VEGETATIVE COVER OR OTHER PERMANENT NON-VEGETATIVE COVER WITH A DENSITY SUFFICIENT TO RESIST ACCELERATED SURFACE EROSION AND SUBSURFACE CHARACTERISTICS SUFFICIENT TO RESIST SLIDING OR OTHER MOVEMENTS.
 22. MAINTAIN ALL PERMANENT AND TEMPORARY SEDIMENT CONTROL DEVICES IN EFFECTIVE CONDITION THROUGHOUT THE CONSTRUCTION PERIOD. UPON COMPLETION OF WORK SWEEP PARKING LOT AND REMOVE ALL TEMPORARY SEDIMENT CONTROLS WHEN AUTHORIZED BY LOCAL GOVERNING AUTHORITY. FILE NOT (NOTICE OF TERMINATION) WITH GOVERNING AUTHORITY RESPONSIBLE FOR REGULATING STORM WATER DISCHARGES FROM CONSTRUCTION ACTIVITIES PER NPDES.



GRADATION TABLE			
	CONN. DOT 2" CRUSHED GRAVEL	ASTM C-33 NO. 2	ASTM C-33 NO. 3
SQUARE MESH SIEVES	% FINER	% FINER	% FINER
2 1/2 INCHES	100	90-100	100
2 INCHES	95-100	35-70	90-100
1 1/2 INCHES	35-70	0-15	35-70
1 1/4 INCHES	0-25	---	---
1 INCHES	0-10	---	0-15
3/4 INCHES	---	0-5	---
1/2 INCHES	---	---	0-5
3/8 INCHES	---	---	---

SOURCE: U.S. DEPARTMENT OF AGRICULTURE, SOIL CONSERVATION SERVICE, STORRS, CONNECTICUT.

TYP ANTI TRACKING APRON DETAIL



THIS DRAWING IS THE PROPERTY OF THE ENGINEER. IT HAS BEEN SPECIFICALLY PREPARED FOR THE OWNER FOR THIS PROJECT AT THIS SITE AND IS NOT TO BE USED FOR ANY OTHER PURPOSE, LOCATION OR OWNER WITHOUT THE WRITTEN CONSENT OF THE ENGINEER.



525 JOHN STREET BRIDGEPORT, CT 06604
Office (203) 333-9465
fax (203) 336-1769
e-mail info@FullerSurveyors

MADISON PLACE
LUXURY TOWNHOUSE DEVELOPMENT
18 POWERHOUSE ROAD
MONTVILLE, CONNECTICUT
PREPARED FOR
JNE HOLDINGS, LLC

Job Number:
FE24-1889

Job Start Date:
3/20/24

Staff Comments	04/18/25
Staff Comments	04/16/25
Staff Comments	03/31/25
Staff Comments	03/18/25
Staff Comments	03/07/25
Staff Comments	02/21/25
Submission	02/11/25

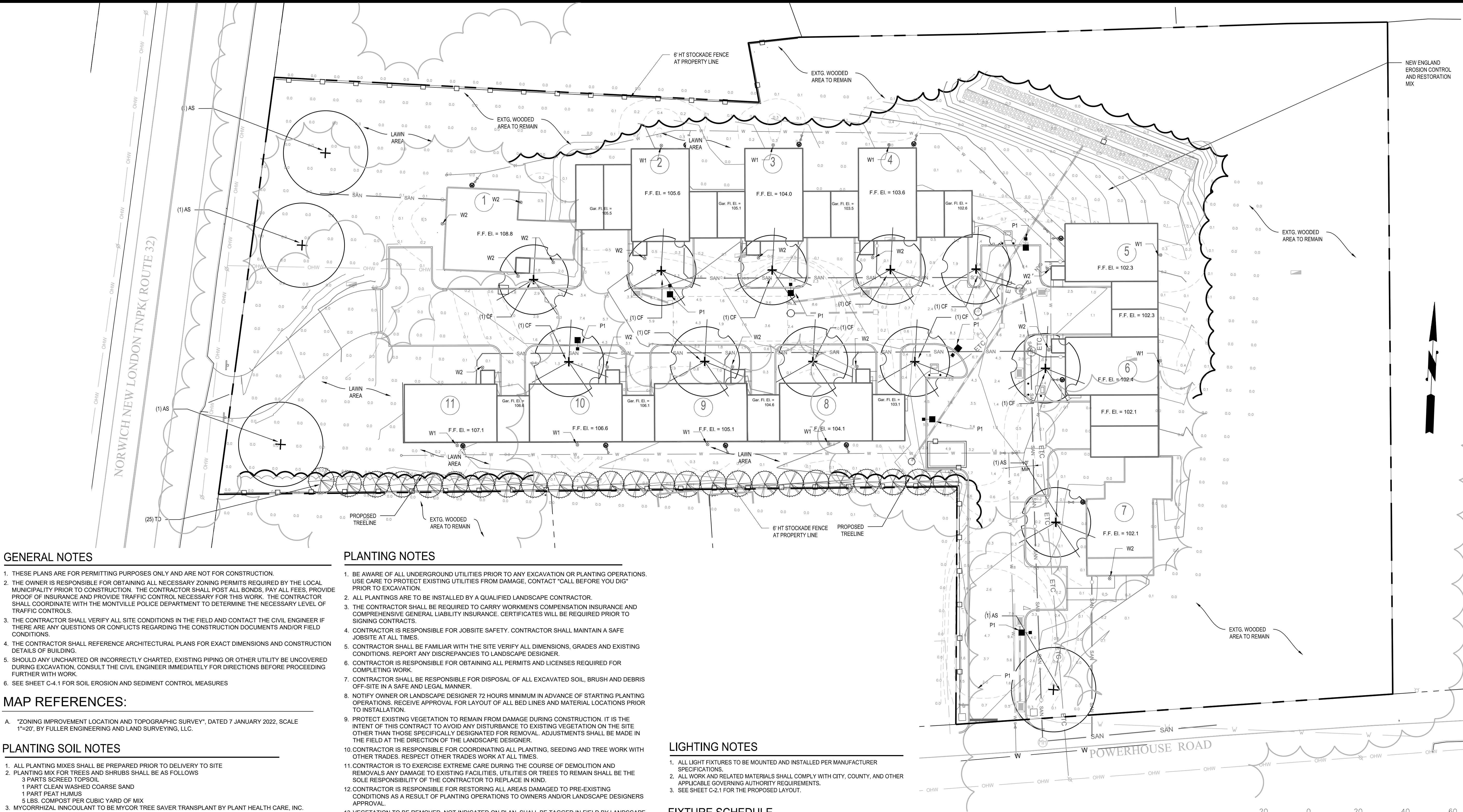
Drawn By: Checked By:
D.R.R. J.E.Q.

Sheet Title:
TEMPORARY
SOIL EROSION &
SEDIMENT
CONTROL NOTES
& DETAILS

Scale:

Sheet Number:

C-4.2



GENERAL NOTES

1. THESE PLANS ARE FOR PERMITTING PURPOSES ONLY AND ARE NOT FOR CONSTRUCTION.
2. THE OWNER IS RESPONSIBLE FOR OBTAINING ALL NECESSARY ZONING PERMITS REQUIRED BY THE LOCAL MUNICIPALITY PRIOR TO CONSTRUCTION. THE CONTRACTOR SHALL POST ALL BONDS, PAY ALL FEES, PROVIDE PROOF OF INSURANCE AND PROVIDE TRAFFIC CONTROL NECESSARY FOR THIS WORK. THE CONTRACTOR SHALL COORDINATE WITH THE MONTVILLE POLICE DEPARTMENT TO DETERMINE THE NECESSARY LEVEL OF TRAFFIC CONTROLS.
3. THE CONTRACTOR SHALL VERIFY ALL SITE CONDITIONS IN THE FIELD AND CONTACT THE CIVIL ENGINEER IF THERE ARE ANY QUESTIONS OR CONFLICTS REGARDING THE CONSTRUCTION DOCUMENTS AND/OR FIELD CONDITIONS.
4. THE CONTRACTOR SHALL REFERENCE ARCHITECTURAL PLANS FOR EXACT DIMENSIONS AND CONSTRUCTION DETAILS OF BUILDING.
5. SHOULD ANY UNCHARTED OR INCORRECTLY CHARTED, EXISTING PIPING OR OTHER UTILITY BE UNCOVERED DURING EXCAVATION, CONSULT THE CIVIL ENGINEER IMMEDIATELY FOR DIRECTIONS BEFORE PROCEEDING FURTHER WITH WORK.
6. SEE SHEET C-4.1 FOR SOIL EROSION AND SEDIMENT CONTROL MEASURES

MAP REFERENCES:

- A. "ZONING IMPROVEMENT LOCATION AND TOPOGRAPHIC SURVEY", DATED 7 JANUARY 2022, SCALE 1"=20", BY FULLER ENGINEERING AND LAND SURVEYING, LLC.

PLANTING SOIL NOTES

1. ALL PLANTING MIXES SHALL BE PREPARED PRIOR TO DELIVERY TO SITE
2. PLANTING MIX FOR TREES AND SHRUBS SHALL BE AS FOLLOWS
 - 3 PARTS SCREED TOPSOIL
 - 1 PART CLEAN WASHED COARSE SAND
 - 1 PART PEAT HUMUS
 - 5 LBS. COMPOST PER CUBIC YARD OF MIX
3. MYCORRHIZAL INOCULANT TO BE MYCOR TREE SAVER TRANSPLANT BY PLANT HEALTH CARE, INC. (1-800-421-9051) OR APPROVED EQUAL
4. TERRASORB AVAILABLE FROM PLANT HEALTH CARE, INC. OR APPROVED EQUAL
5. SUBMIT CERTIFICATION OF PLANTING MIX FOR TREES AND SHRUBS FROM SOIL DISTRIBUTOR.
6. TOPSOIL MIX SHALL INCLUDE:
 - 3 PARTS SCREENED TOPSOIL
 - 1 PART SAND
 - 1 PART HUMUS
 - 5 LBS. COMPOST PER CU. YD. OF MIX
7. TOPSOIL:
 - A. PROVIDE A NATURAL, FERTILE, FRAGILE, NATURAL LOAM SURFACE SOIL, CAPABLE OF SUSTAINING VIGOROUS PLANT GROWTH, OF UNIFORM COMPOSITION THROUGHOUT AND WITHOUT ADMIXTURES OF SUBSOIL, AND FREE OF STONES, LUMPS, PLANTS, ROOTS, STICKS OR OTHER EXTRANEIOUS MATTER.
 - B. TOPSOIL SHALL CONTAIN NOT LESS THAN 4% NOR MORE THAN 20% ORGANIC MATTER AS DETERMINED BY THE WET COMBUSTION METHOD.
 - C. MECHANICAL ANALYSIS
 - SCREEN SIZE
 - % BY WEIGHT PASSING
8. CONTRACTORS SHALL BE RESPONSIBLE FOR ALL TESTING AND ANALYSIS OF EXISTING AND IMPORTED SOILS. FURNISH A SOIL ANALYSIS MADE BY A QUALIFIED INDEPENDENT SOIL - TESTING AGENCY STATING PERCENTAGES OF ORGANIC MATTER, INORGANIC MATTER (SILT, CLAY, AND SAND), DELETERIOUS MATERIAL, PH, AND MINERAL AND PLANT - NUTRIENT CONTENT OF TOPSOIL.
9. REPORT SUITABILITY OF TOPSOIL FOR LAWN AND SHRUB PLANTING GROWTH. RECOMMEND QUANTITIES OF NITROGEN, PHOSPHORUS, AND POTASH NUTRIENT AND ANY LIMESTONE, ALUMINUM SULFATE, OR OTHER SOIL AMENDMENTS TO BE ADDED TO PRODUCE A SATISFACTORY TOPSOIL.

PLANTING NOTES

1. BE AWARE OF ALL UNDERGROUND UTILITIES PRIOR TO ANY EXCAVATION OR PLANTING OPERATIONS. USE CARE TO PROTECT EXISTING UTILITIES FROM DAMAGE, CONTACT "CALL BEFORE YOU DIG" PRIOR TO EXCAVATION.
2. ALL PLANTINGS ARE TO BE INSTALLED BY A QUALIFIED LANDSCAPE CONTRACTOR.
3. THE CONTRACTOR SHALL BE REQUIRED TO CARRY WORKMEN'S COMPENSATION INSURANCE AND COMPREHENSIVE GENERAL LIABILITY INSURANCE. CERTIFICATES WILL BE REQUIRED PRIOR TO SIGNING CONTRACTS.
4. CONTRACTOR IS RESPONSIBLE FOR JOBSITE SAFETY. CONTRACTOR SHALL MAINTAIN A SAFE JOBSITE AT ALL TIMES.
5. CONTRACTOR SHALL BE FAMILIAR WITH THE SITE VERIFY ALL DIMENSIONS, GRADES AND EXISTING CONDITIONS. REPORT ANY DISCREPANCIES TO LANDSCAPE DESIGNER.
6. CONTRACTOR IS RESPONSIBLE FOR OBTAINING ALL PERMITS AND LICENSES REQUIRED FOR COMPLETING WORK.
7. CONTRACTOR SHALL BE RESPONSIBLE FOR DISPOSAL OF ALL EXCAVATED SOIL, BRUSH AND DEBRIS OFF-SITE IN A SAFE AND LEGAL MANNER.
8. NOTIFY OWNER OR LANDSCAPE DESIGNER 72 HOURS MINIMUM IN ADVANCE OF STARTING PLANTING OPERATIONS. RECEIVE APPROVAL FOR LAYOUT OF ALL BED LINES AND MATERIAL LOCATIONS PRIOR TO INSTALLATION.
9. PROTECT EXISTING VEGETATION TO REMAIN FROM DAMAGE DURING CONSTRUCTION. IT IS THE INTENT OF THIS CONTRACT TO AVOID ANY DISTURBANCE TO EXISTING VEGETATION ON THE SITE OTHER THAN THOSE SPECIFICALLY DESIGNATED FOR REMOVAL. ADJUSTMENTS SHALL BE MADE IN THE FIELD AT THE DIRECTION OF THE LANDSCAPE DESIGNER.
10. CONTRACTOR IS RESPONSIBLE FOR COORDINATING ALL PLANTING, SEEDING AND TREE WORK WITH OTHER TRADES. RESPECT OTHER TRADES WORK AT ALL TIMES.
11. CONTRACTOR IS TO EXERCISE EXTREME CARE DURING THE COURSE OF DEMOLITION AND REMOVALS ANY DAMAGE TO EXISTING FACILITIES, UTILITIES OR TREES TO REMAIN SHALL BE THE SOLE RESPONSIBILITY OF THE CONTRACTOR TO REPLACE IN KIND.
12. CONTRACTOR IS RESPONSIBLE FOR RESTORING ALL AREAS DAMAGED TO PRE-EXISTING CONDITIONS AS A RESULT OF PLANTING OPERATIONS TO OWNERS AND/OR LANDSCAPE DESIGNERS APPROVAL.
13. VEGETATION TO BE REMOVED, NOT INDICATED ON PLAN, SHALL BE TAGGED IN FIELD BY LANDSCAPE DESIGNER.
14. THE LANDSCAPE DESIGNER RESERVES THE RIGHT TO REJECT INFERIOR PLANT MATERIALS AND SUBSTITUTIONS. THE LANDSCAPE DESIGNER IS WILLING TO MAKE TWO TRIPS TO SUPPLIERS TO TAG, REVIEW AND APPROVE MATERIALS. PREVIOUSLY UNAPPROVED MATERIALS MAY BE REJECTED AT THE SITE. MINIMALLY, ALL MATERIALS WILL CONFORM TO THE "AMERICAN STANDARD FOR NURSERY STOCK" (ANSI Z60.1 - 2004) OF THE AMERICAN ASSOCIATION OF NURSERYMEN.
15. ALL PLANT MATERIAL SHALL BE GUARANTEED BY THE CONTRACTOR TO BE IN GOOD, HEALTHY AND FLOURISHING CONDITION FOR A PERIOD OF ONE YEAR FROM THE DATE OF ACCEPTANCE. THE CONTRACTOR SHALL REPLACE, AS SOON AS WEATHER AND SEASONAL CONDITIONS PERMIT, ALL DEAD PLANTS AND ALL PLANTS NOT IN A VIGOROUS, THRIVING CONDITION, AS DETERMINED BY THE LANDSCAPE DESIGNER DURING, AND AT THE END OF THE GUARANTEE PERIOD. WARRANTY REPLACEMENT WILL BE PROVIDED AT NO COST TO THE OWNER AND INCLUDE MATERIALS AND LABOR. CONTRACTOR IS RESPONSIBLE FOR REPAIR OF ANY DAMAGE INCURRED DURING REPLACEMENT OF WARRANTY MATERIALS.
16. WHEN THERE IS A DISCREPANCY BETWEEN PLANT QUANTITIES SHOWN ON THE PLANT LIST & THE PLAN, USE THE QUANTITIES FROM THE PLAN.
17. PERENNIALS, GROUNDCOVERS & GRASSES TO BE FIELD LOCATED BY LANDSCAPE DESIGNER. COORDINATE TO NOTIFY LANDSCAPE DESIGNER AT LEAST 72 HOURS IN ADVANCE OF EXPECTED INSTALLATION DATE. ON THAT DATE ALL BEDS SHALL BE PREPARED & ALL PLANT MATERIAL SHALL BE ON SITE.
18. PROVIDE A MINIMUM 6" TOPSOIL FOR ALL DISTURBED AREAS. SUBMIT SAMPLE OF TOPSOIL AND SOIL TEST RESULTS FOR LANDSCAPE DESIGNER APPROVAL PRIOR TO DELIVERING TO SITE.
19. MULCH ALL BEDS SHOWN AS CONTINUOUS WITH A 3" MINIMUM OF DOUBLE SHREDDED CEDAR BARK MULCH. SAMPLE TO BE SUBMITTED TO LANDSCAPE DESIGNER FOR APPROVAL.
20. ALL PLANT MATERIALS TO BE SOURCED FROM LOCALLY GROWN GROWERS.
21. TRANSPLANTED MATERIALS TO BE WATERED, HEELED IN AND TENDED BY CONTRACTOR UNTIL FINAL PLACEMENT.

LIGHTING NOTES

1. ALL LIGHT FIXTURES TO BE MOUNTED AND INSTALLED PER MANUFACTURER SPECIFICATIONS.
2. ALL WORK AND RELATED MATERIALS SHALL COMPLY WITH CITY, COUNTY, AND OTHER APPLICABLE GOVERNING AUTHORITY REQUIREMENTS.
3. SEE SHEET C-2.1 FOR THE PROPOSED LAYOUT.

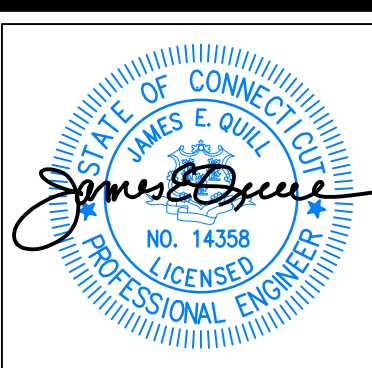
FIXTURE SCHEDULE

QTY	CALLOUT	SYMBOL	FIXTURE DESCRIPTION	MODEL	NOTES	LUMENS
7	P1	□	PARKING LOT POLE LIGHT FIXTURE	HUBBELL LIGHTING ASL LED SERIES, MODEL ASL-16L-4K-219-4-EHS, POWDER COATED ALUMINUM DARK BRONZE.	123W 4K LED, TYPE 2 DISTRIBUTION, 16" MOUNTING HEIGHT	11,253
9	W1	■	PATIO WALL LIGHT FIXTURE	LITHONIA ACCENT, MODEL OLC59WH POWDER COATED ALUMINUM, WHITE	8.9W 4K LED, 120V	513
13	W2	■	FRONT PORCH WALL LIGHT FIXTURE	LITHONIA ACCENT, MODEL OLC59WH POWDER COATED ALUMINUM, WHITE	8.9W 4K LED, 120V	513

PROPOSED PLANT SCHEDULE

KEY	QTY	BOTANICAL NAME	COMMON NAME	ROOT	SIZE	COMMENTS
TREES						
AS	4	ACER SACCHARUM	SUGAR MAPLE	B&B	1 1/2" CAL	FULL, EXTRA HEAVY
TO	25	THUJA OCCIDENTALIS 'EMERALD GREEN'	EMERALD GREEN ARBORVITAE	B&B	10-12 HT	FULL, EXTRA HEAVY
UNDERSTORY TREES						
CF	11	CORNUS FLORIDA	FLOWERING DOGWOOD	B&B	1 1/2" CAL	FULL, EXTRA HEAVY, SINGLE STRAIGHT LEADER
NEW ENGLAND CONSERVATION / WILDLIFE MIX						
APPLICATION RATE: 1 LB./1,450 S.F.						
NEW ENGLAND EROSION CONTROL/RESTORATION MIX						
APPLICATION RATE: 35 LB./ACRE						

APPROVED BY THE MONTVILLE INLAND WETLAND COMMISSION
CHAIRMAN _____ DATE _____
APPROVED BY THE MONTVILLE PLANNING AND ZONING COMMISSION
CHAIRMAN _____ DATE _____
EXPIRATION DATE _____
SEC PLAN APPROVAL DATE _____



THIS DRAWING IS THE PROPERTY OF THE ENGINEER. IT HAS BEEN SPECIFICALLY PREPARED FOR THE OWNER FOR THIS PROJECT AT THIS SITE AND IS NOT TO BE USED FOR ANY OTHER PURPOSE, LOCATION OR OWNER WITHOUT WRITTEN CONSENT OF THE ENGINEER.



525 JOHN STREET BRIDGEPORT, CT. 06604
Office (203) 336-9465
fax (203) 336-1769
e-mail info@FullerSurveyors

MADISON PLACE
LUXURY TOWNHOUSE DEVELOPMENT
18 POWERHOUSE ROAD
MONTVILLE, CONNECTICUT
PREPARED FOR
JNE HOLDINGS, LLC

Job Number:
FE24-1889

Job Start Date:
3/20/24

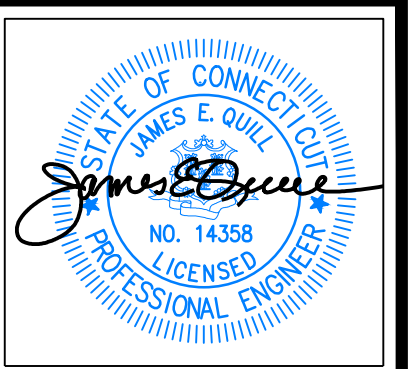
Staff Comments	04/18/25
Staff Comments	04/16/25
Staff Comments	03/31/25
Staff Comments	03/18/25
Staff Comments	03/07/25
Staff Comments	02/21/25
Submission	02/11/25

Drawn By: **D.R.R.**
Checked By: **J.E.Q.**

Sheet Title:
LANDSCAPE & LIGHTING PLAN

Scale: **1"=20'**

Sheet Number:
C-5.1



THIS DRAWING IS THE PROPERTY OF THE ENGINEER. IT HAS BEEN SPECIFICALLY PREPARED FOR THE OWNER FOR THIS PROJECT AT THIS SITE AND IS NOT TO BE USED FOR ANY OTHER PURPOSE, LOCATION, OR OWNER WITHOUT WRITTEN CONSENT OF THE ENGINEER.

Fuller Engineering & Land Surveying
525 JOHN STREET BRIDGEPORT, CT. 06604
Office (203) 333-9465
Fax (203) 336-1769
e-mail Info@FullerSurveyors

MADISON PLACE
LUXURY TOWNHOUSE DEVELOPMENT
18 POWERHOUSE ROAD
MONTVILLE, CONNECTICUT
PREPARED FOR
JNE HOLDINGS, LLC

Job Number:
FE24-1889

Job Start Date:
3/20/24

Staff Comments	04/18/25
Staff Comments	04/16/25
Staff Comments	03/31/25
Staff Comments	03/19/25
Staff Comments	03/07/25
Staff Comments	02/21/25
Submission	02/11/25

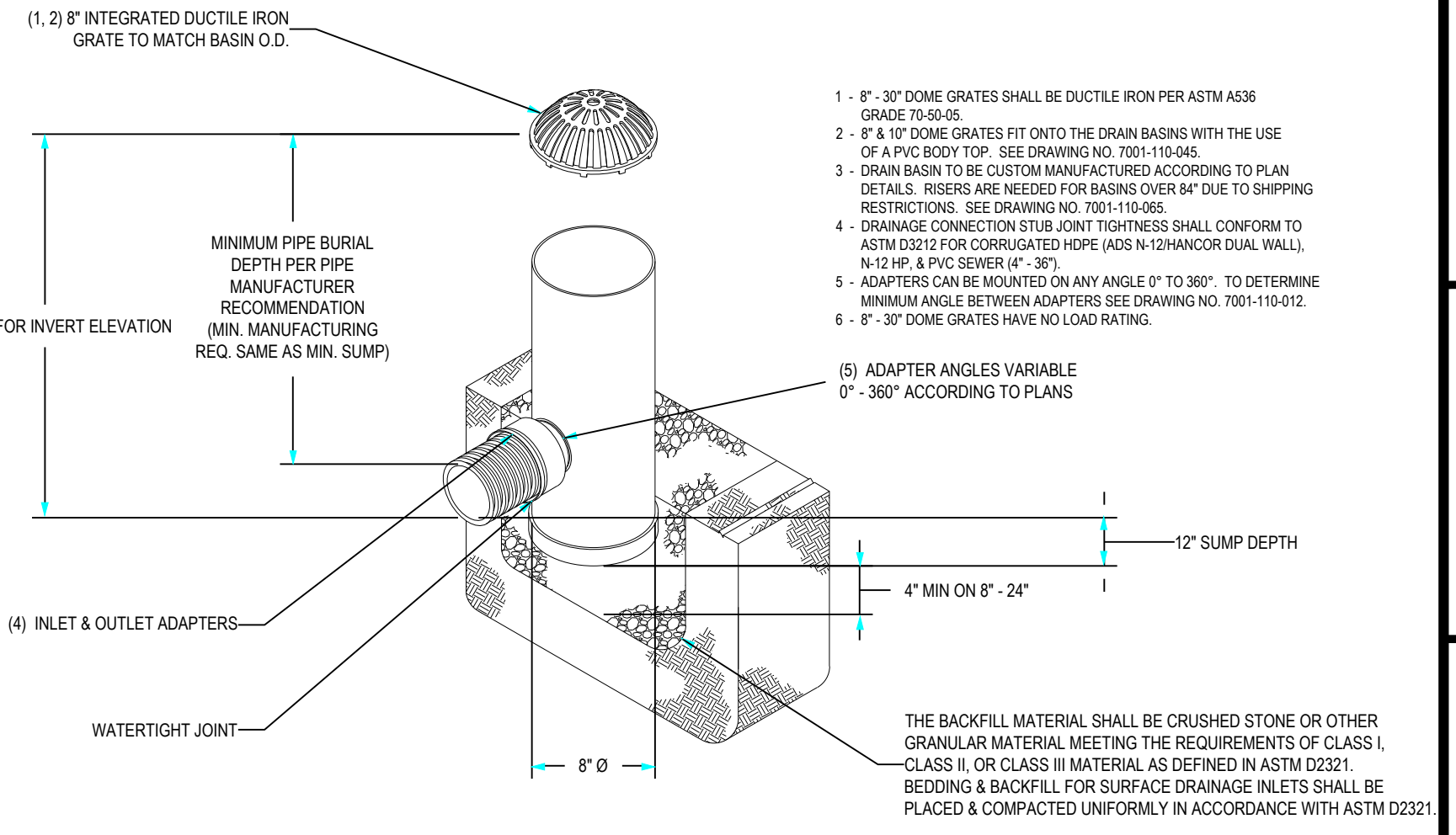
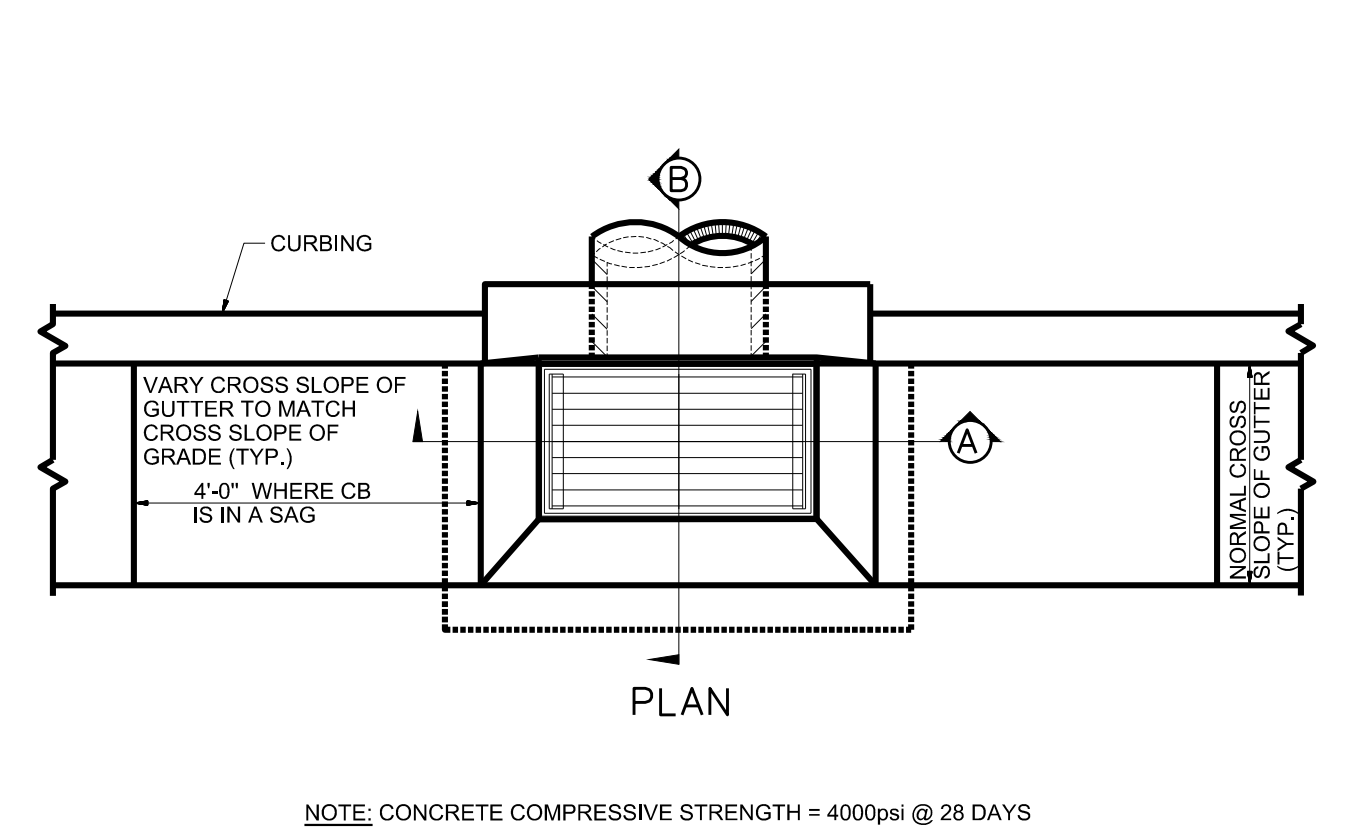
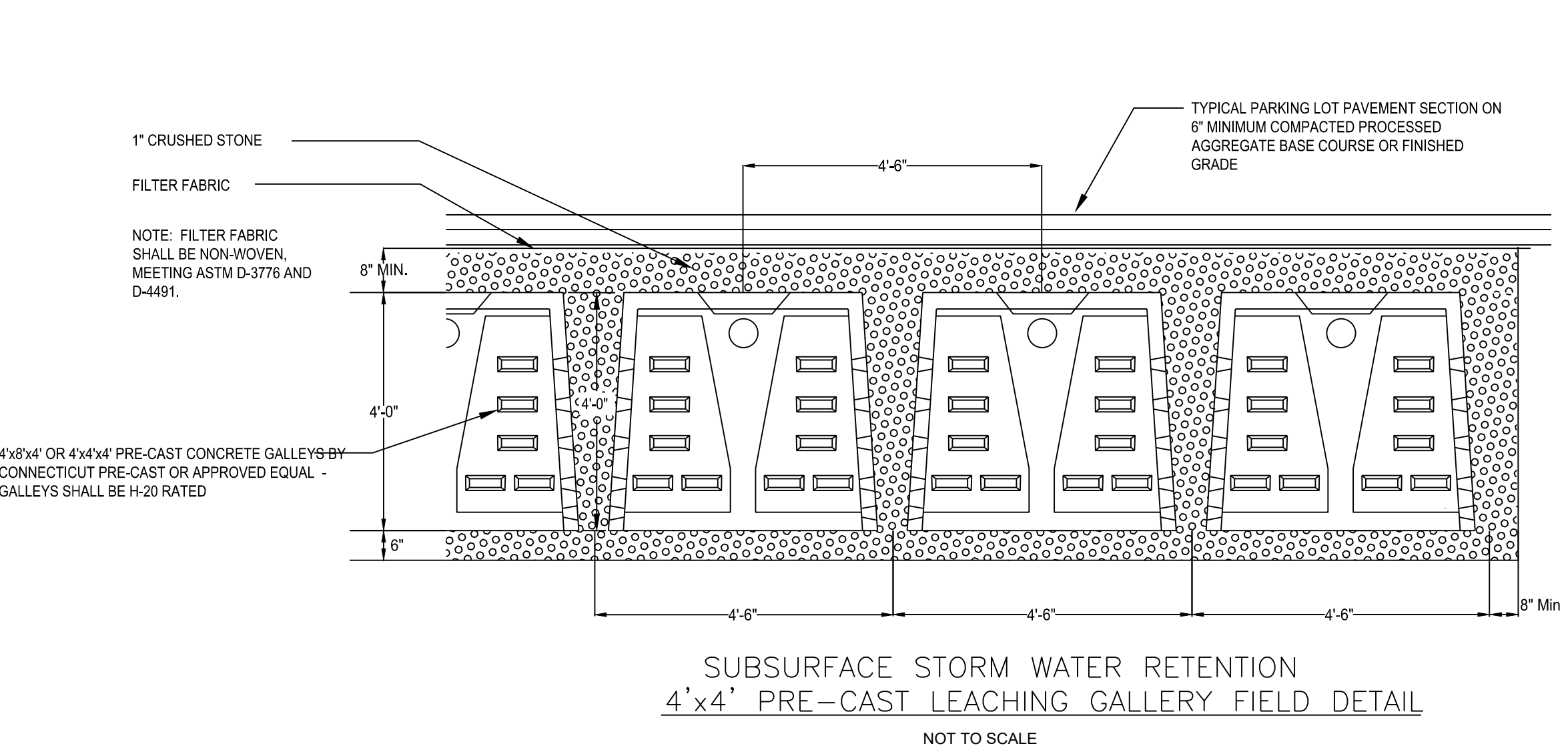
Drawn By: **Checked By:**
D.R.R. J.E.Q.

Sheet Title:
DETAIL SHEET

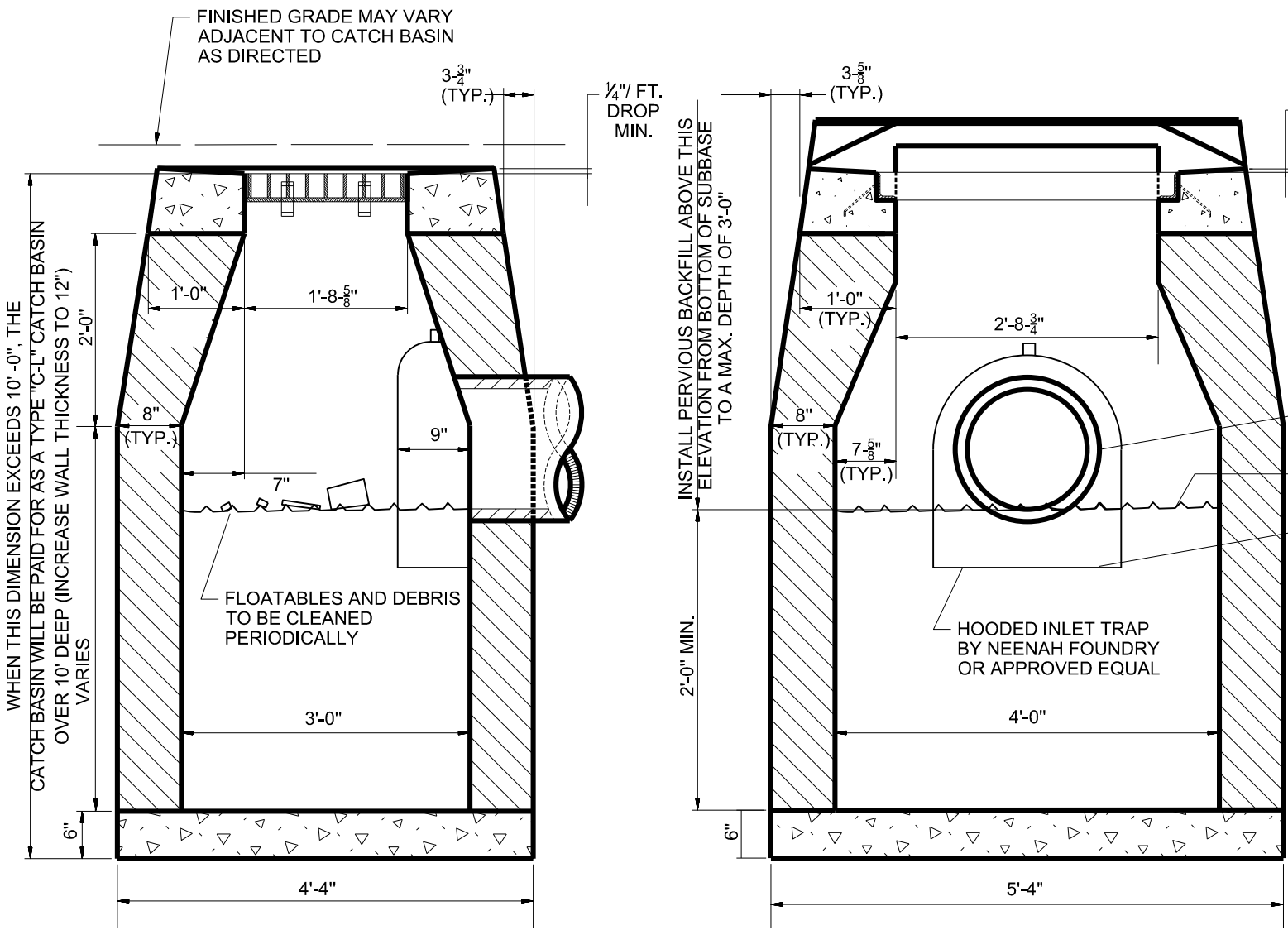
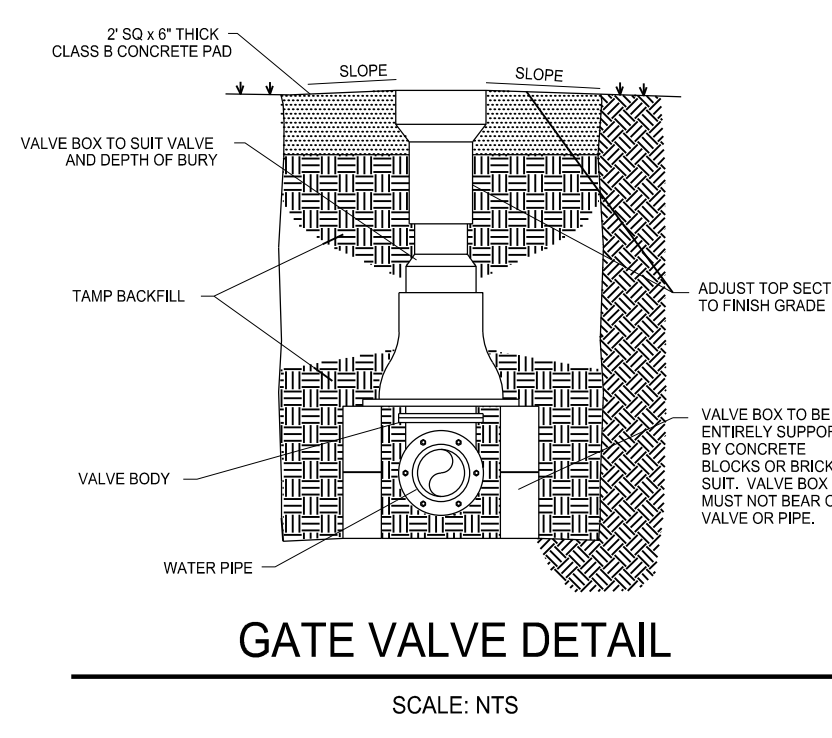
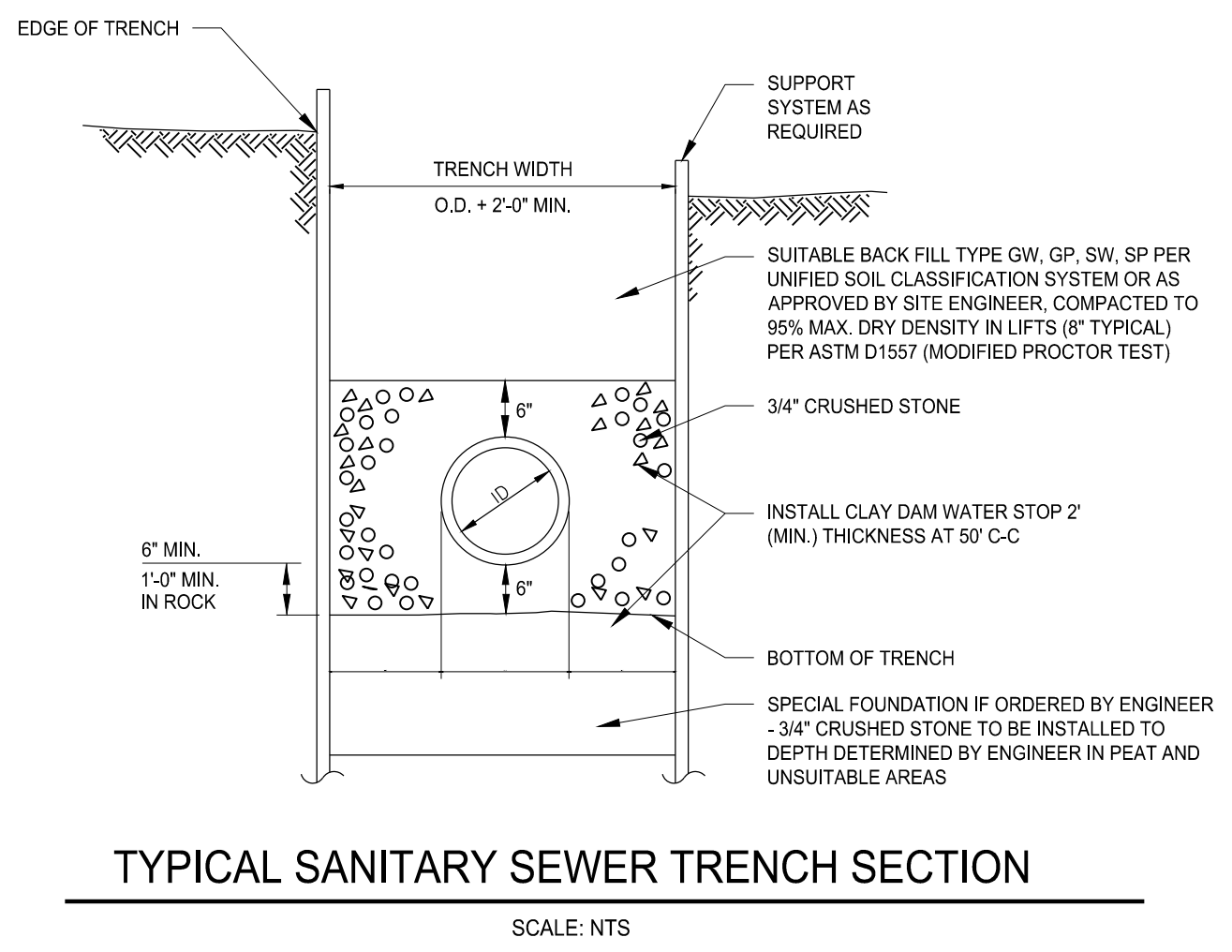
Scale:

Sheet Number:

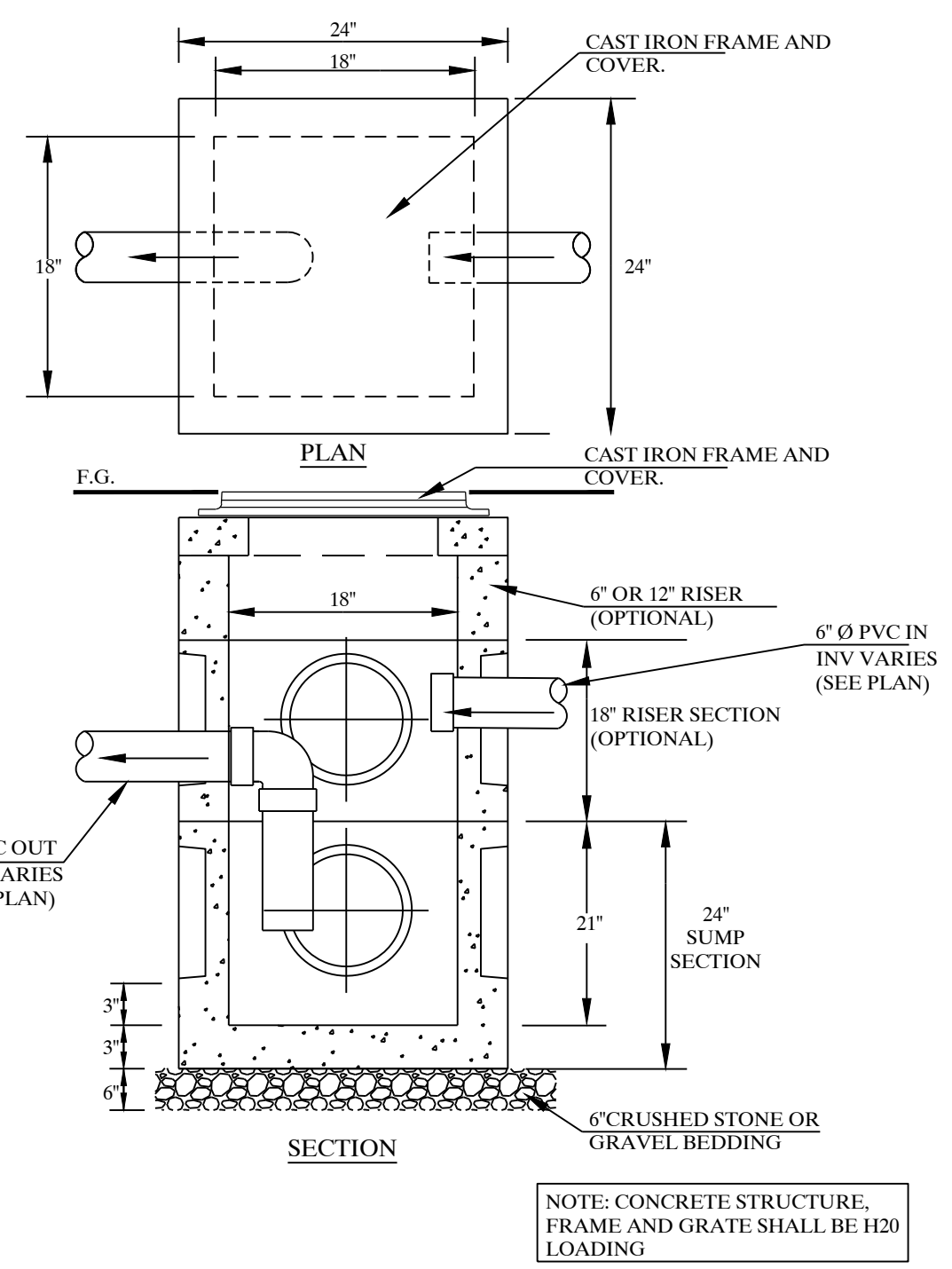
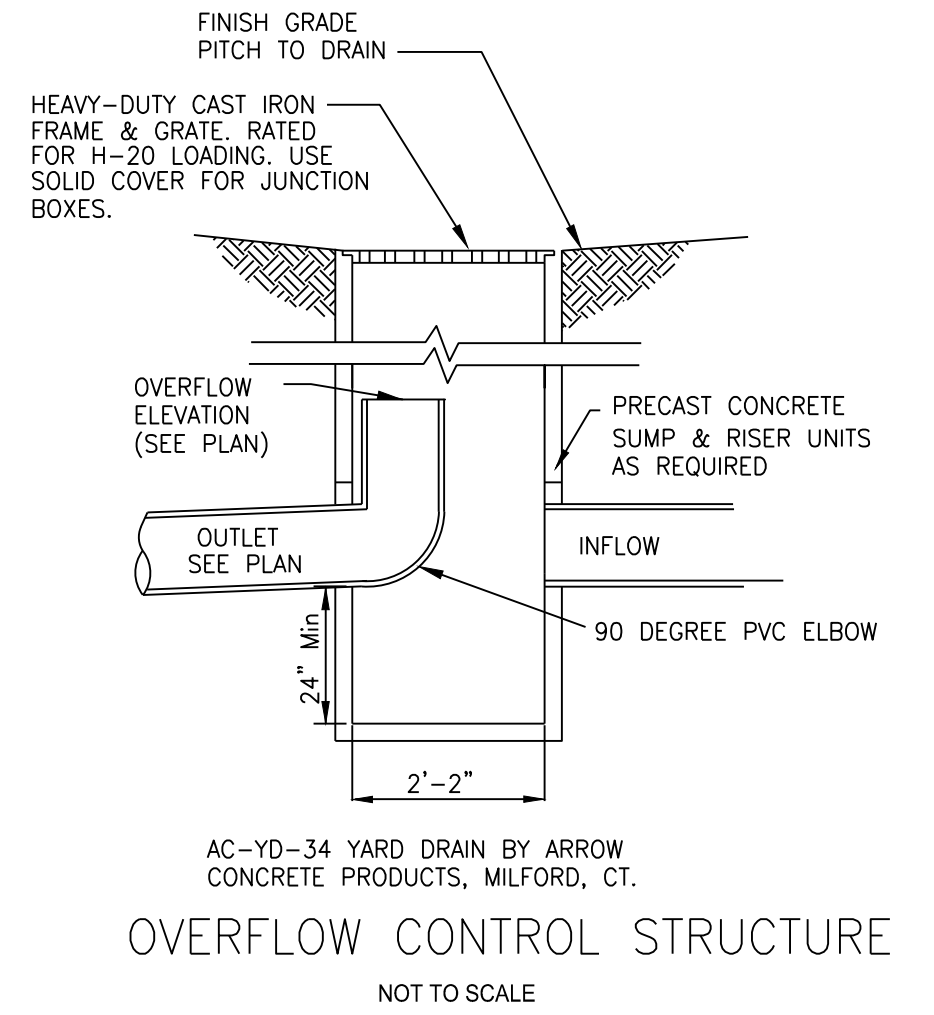
C-6.2



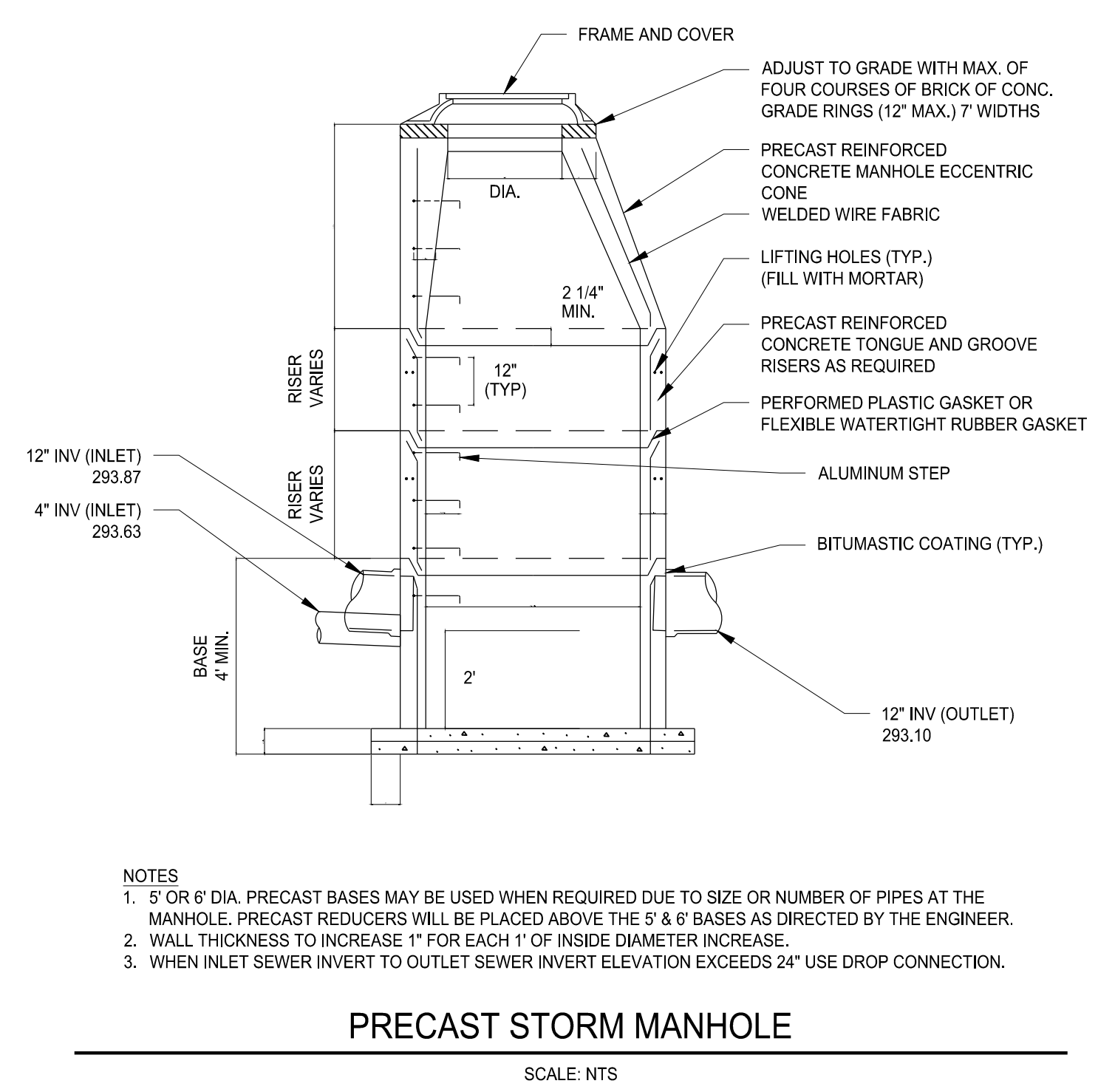
NYLOPLAST DRAIN BASIN WITH DOME GRATE (AD-1)



TYPE "C-L" CATCH BASIN WITH HOODED INLET TRAP

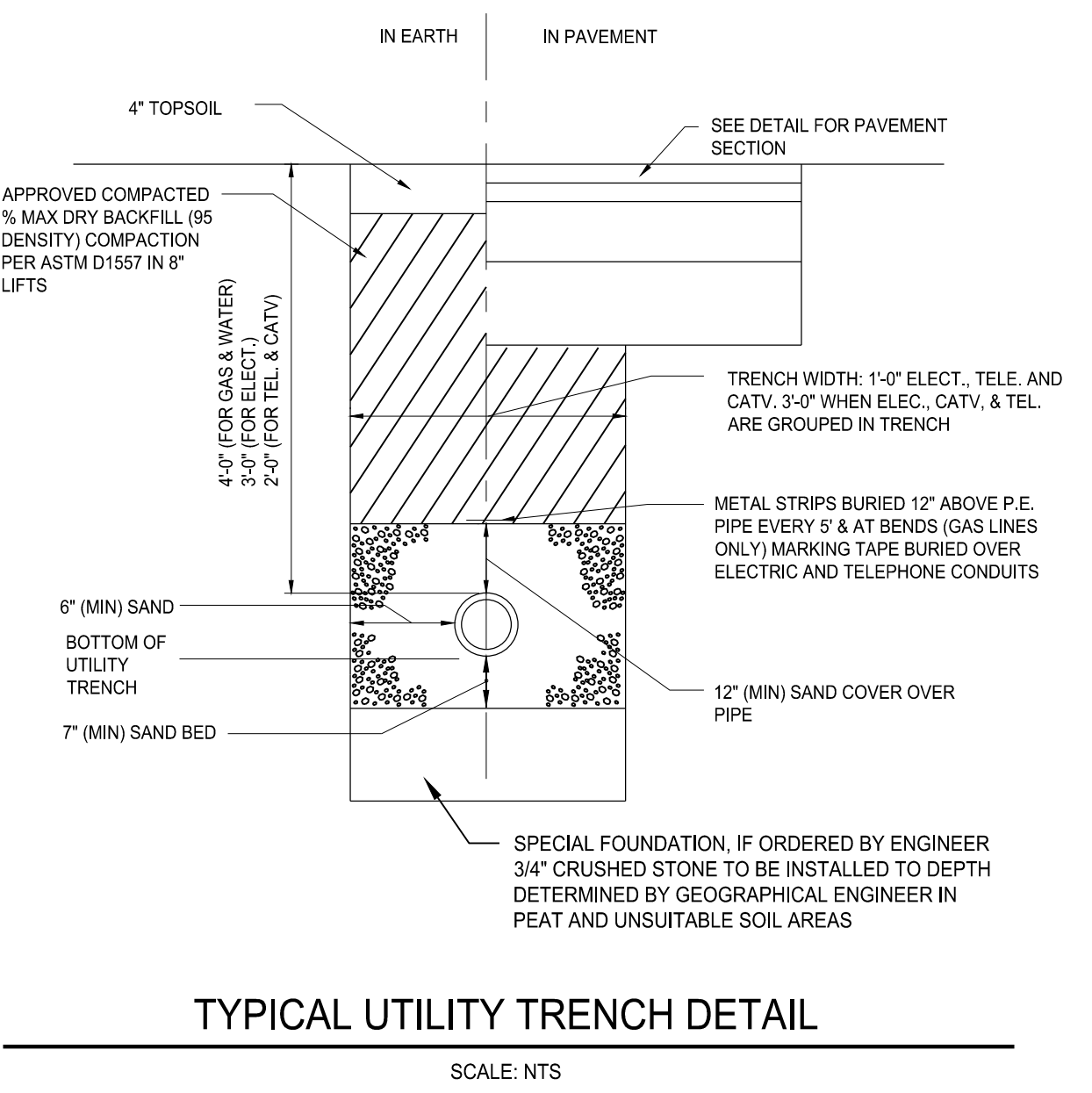


COARSE PARTICLE SEPARATOR
SCALE: N.T.S.

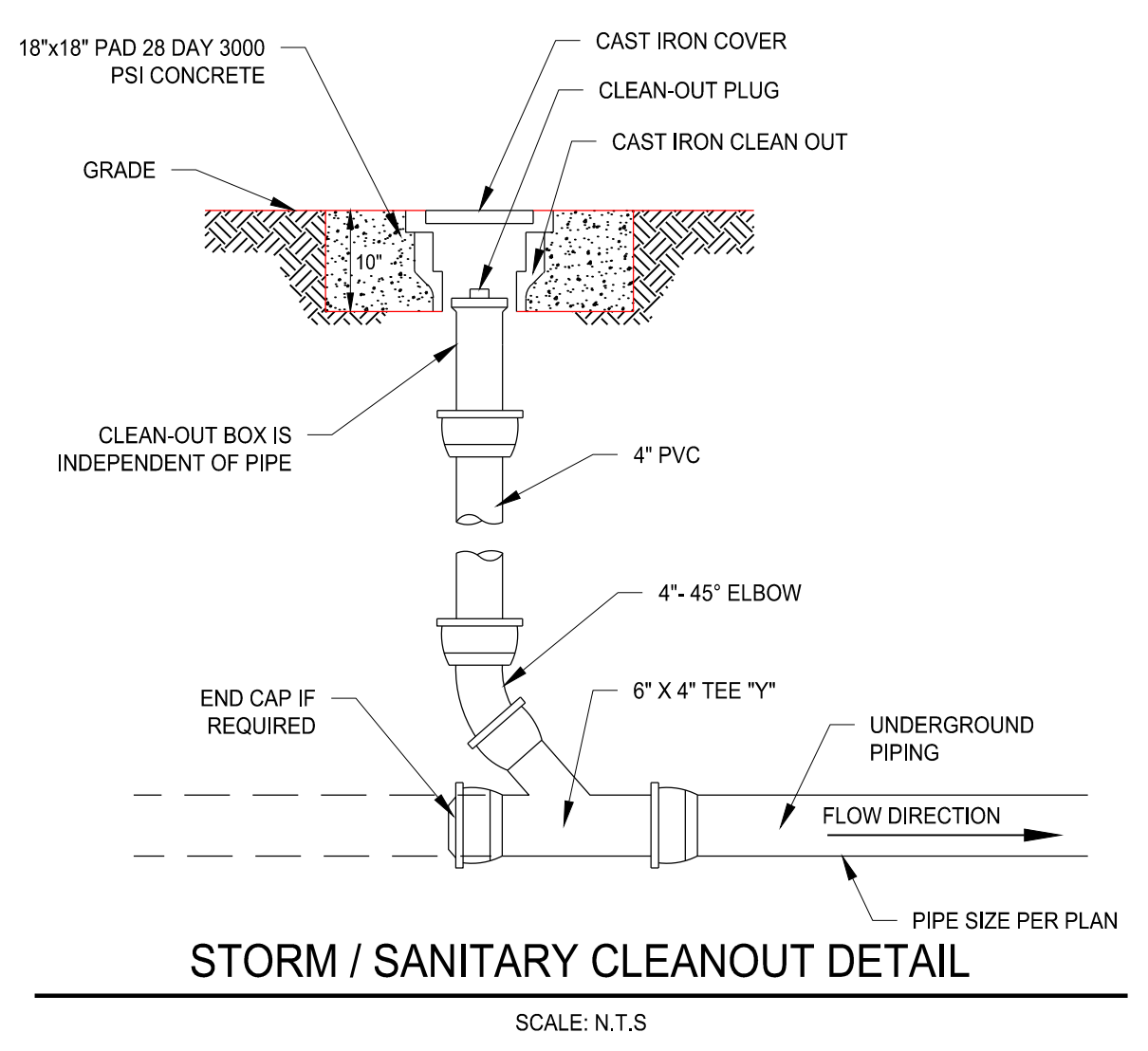


- NOTES
- 5' OR 6' DIA. PRECAST BASES MAY BE USED WHEN REQUIRED DUE TO SIZE OR NUMBER OF PIPES AT THE MANHOLE. PRECAST REDUCERS WILL BE PLACED ABOVE THE 5' & 6' BASES AS DIRECTED BY THE ENGINEER.
 - WALL THICKNESS TO INCREASE 1" FOR EACH 1' OF INSIDE DIAMETER INCREASE.
 - WHEN INLET SEWER INVERT TO OUTLET SEWER INVERT ELEVATION EXCEEDS 24" USE DROP CONNECTION.

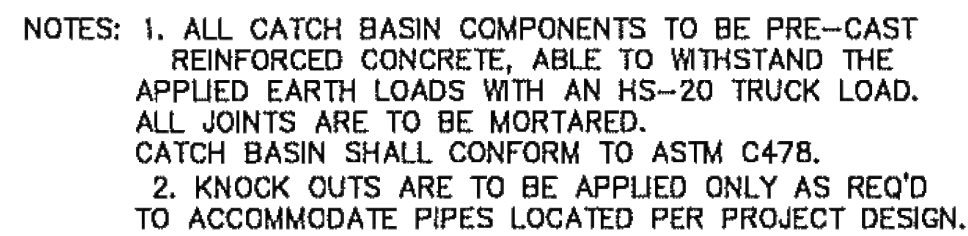
PRECAST STORM MANHOLE
SCALE: NTS



TYPICAL UTILITY TRENCH DETAIL
SCALE: NTS

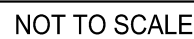


STORM / SANITARY CLEANOUT DETAIL
SCALE: N.T.S

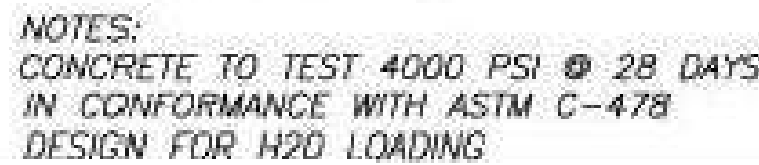


NOTE: TYPE "CL" CATCH BASIN TOP SHOWN.
SEE CATCH BASIN TOP DETAILS (ABOVE)
FOR OTHER CB TOP STYLES.

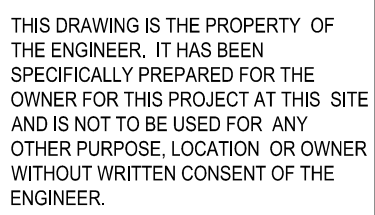
- 1.) USE FILTER INSERTS WHERE SHOWN ON DESIGN PLANS
OR AS REQUIRED BY D.P.W. ENGINEERING.
FILTER USED SHALL BE FROM D.P.W. APPROVED SUPPLIERS LIST:
"ULTRA-URBAN FILTER W/SMART SPONGE FILTER MEDIA"
-ABTECH INDUSTRIES, SCOTSDALE, AZ, 1-800-543-8999
"TRANSPO ENVIROSAFE MODULAR STORMWATER CATCH BASIN FILTER"
-TRANSPO INDUSTRIES, NEW ROCHELLE, NY, 1-914-636-1000
OR OTHER APPROVED FILTER.
- 2.) ALLOW 24" MINIMUM CLEARANCE BETWEEN BOTTOM OF GRATE
AND TOP OF PIPE INLET OR OUTLET.
- 3.) INSTALL AND MAINTAIN ACCORDING TO MANUFACTURERS
RECOMMENDATIONS.



CONE DIMENSIONS	
DIA. OPENING	HEIGHT
24"	36"
30"	36"



APPROVED BY THE MONTVILLE INLAND WETLAND COMMISSION	
CHAIRMAN _____	DATE _____
APPROVED BY THE MONTVILLE PLANNING AND ZONING COMMISSION	
CHAIRMAN _____	DATE _____
EXPIRATION DATE _____	
SEC PLAN APPROVAL DATE _____	



525 JOHN STREET BRIDGEPORT, CT. 06604
Office (203) 333-9465
fax (203) 336-1769
e-mail info@FullerSurveyors

MADISON PLACE
LUXURY TOWNHOUSE DEVELOPMENT
18 POWERHOUSE ROAD
MONTVILLE, CONNECTICUT
PREPARED FOR
JNE HOLDINGS, LLC

Job Number:
FE24-1889

Job Start Date:
3/20/24

Staff Comments	04/18/25
Staff Comments	04/16/25
Staff Comments	03/31/25
Staff Comments	03/18/25
Staff Comments	03/07/25
Staff Comments	02/21/25
Submission	02/11/25

Drawn By: Checked By:
D.R.R. J.E.Q.

Sheet Title:

DETAIL SHEET

Scale:

Sheet Number:

C-6.3