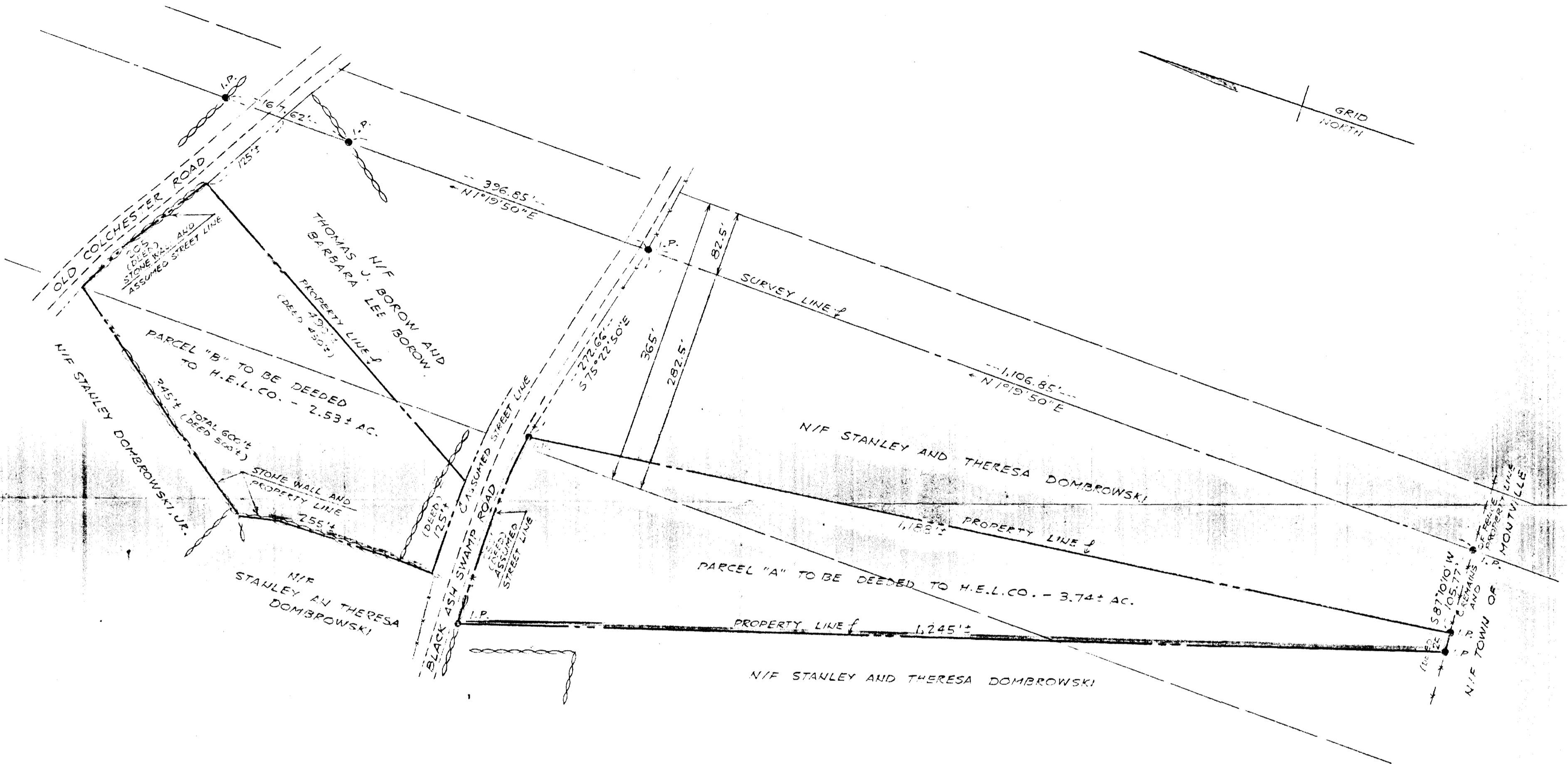
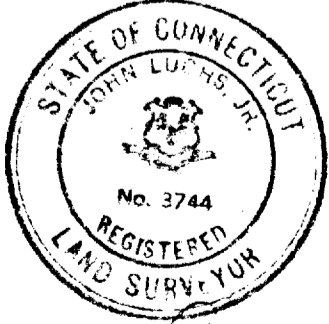


FOLD



GRID NORTH

I hereby Certify this Map to be substantially correct and in accordance with Class "D" of Code of Conn. Technical Council, Inc.



John Luchs, Jr.

COLUMBIA - WATERFORD R.O.W.

LAND TO BE PURCHASED FROM JULIUS BOROKOSKI AND THOMAS BOROW MONTVILLE, CONN.

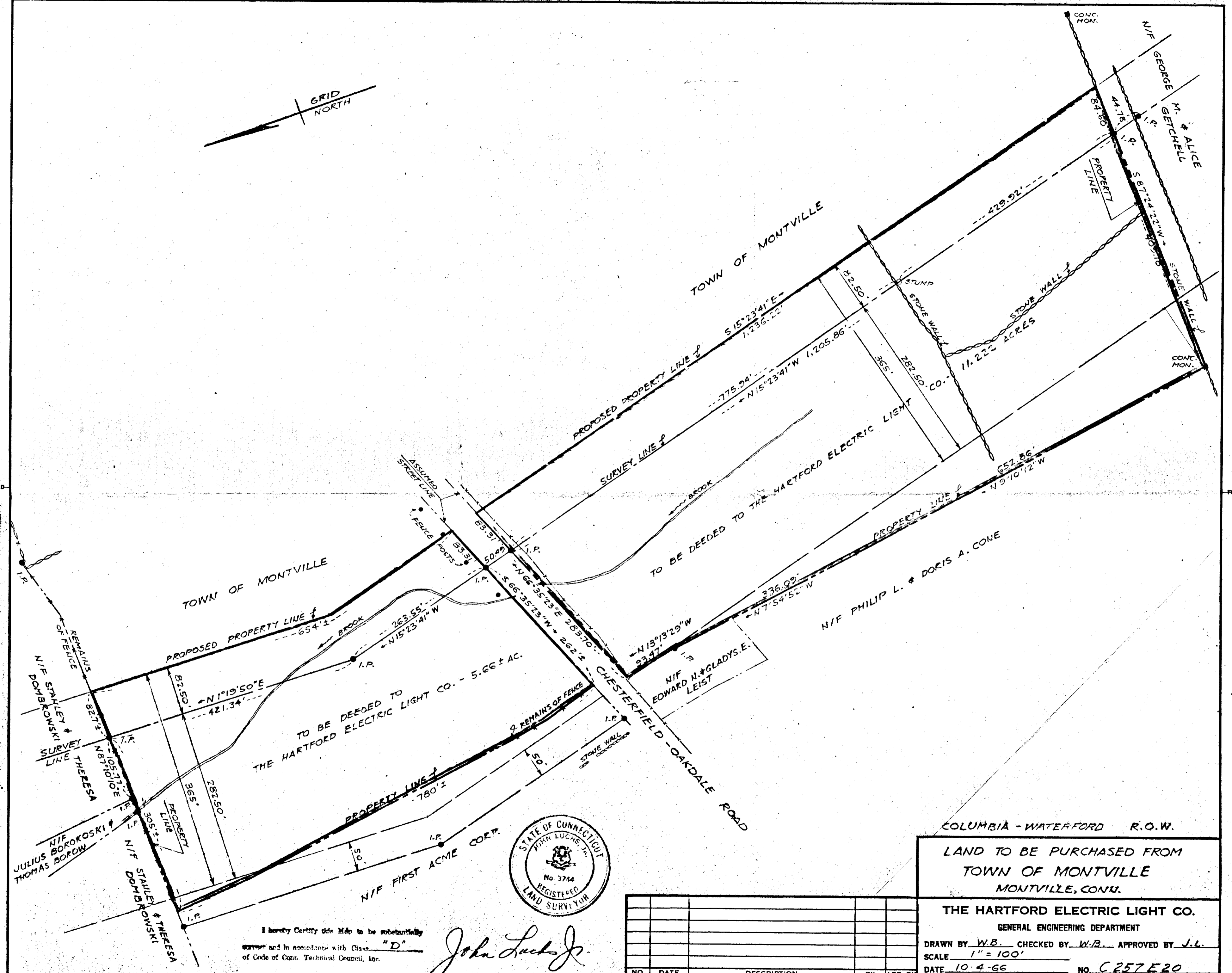
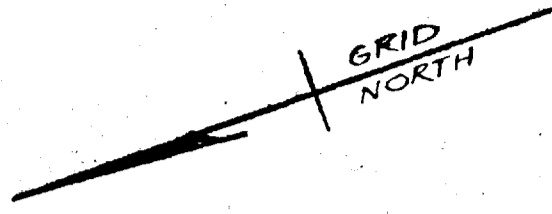
THE HARTFORD ELECTRIC LIGHT CO. GENERAL ENGINEERING DEPARTMENT

DRAWN BY W.B. CHECKED BY W.B. APPROVED BY J.L.
 SCALE 1" = 100'
 DATE 10-5-66 NO. C257E20

NO.	DATE	DESCRIPTION	BY	APP BY

FOLD

0-51.9-109 SHEET NO. 7



I hereby Certify this Map to be substantially correct and in accordance with Class "D" of Code of Cons. Technical Council, Inc.

John Lucas Jr.

NO.	DATE	DESCRIPTION	BY	APP. BY

COLUMBIA - WATERFORD R.O.W.

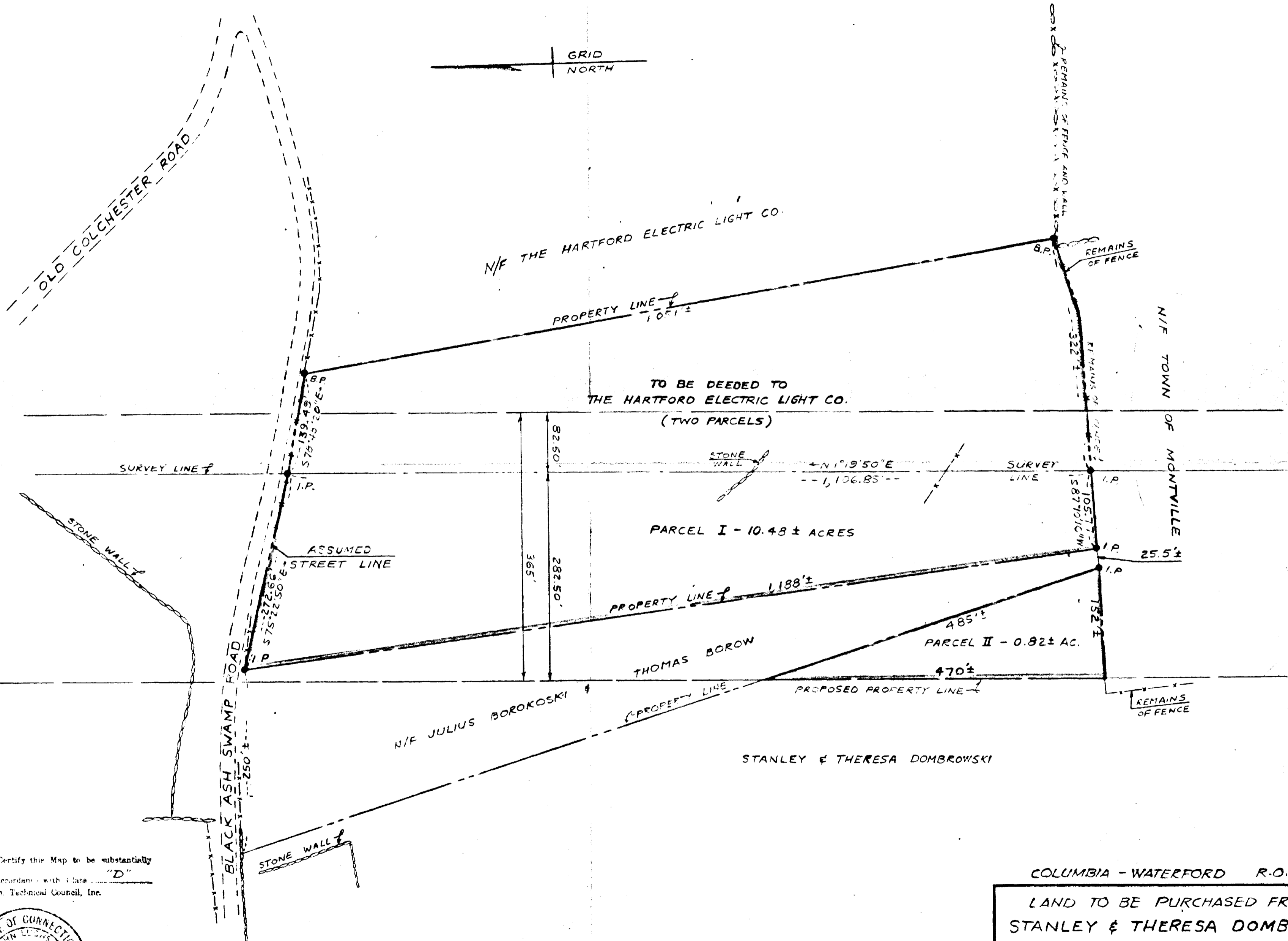
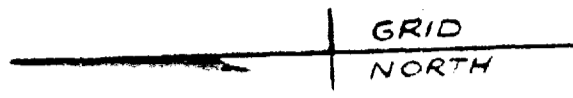
LAND TO BE PURCHASED FROM
TOWN OF MONTVILLE
MONTVILLE, CONN.

THE HARTFORD ELECTRIC LIGHT CO.
GENERAL ENGINEERING DEPARTMENT

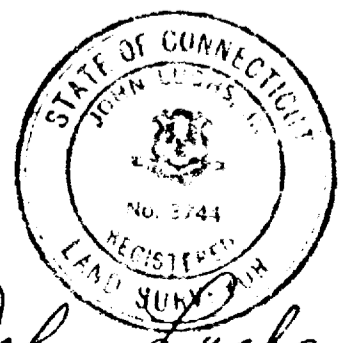
DRAWN BY W.B. CHECKED BY W.B. APPROVED BY J.L.
SCALE 1" = 100'
DATE 10-4-66 NO. C257E20

0-5109-111

SHEET NO. 6



I hereby certify this Map to be substantially correct and in accordance with a case of Code of Conn. Technical Council, Inc.



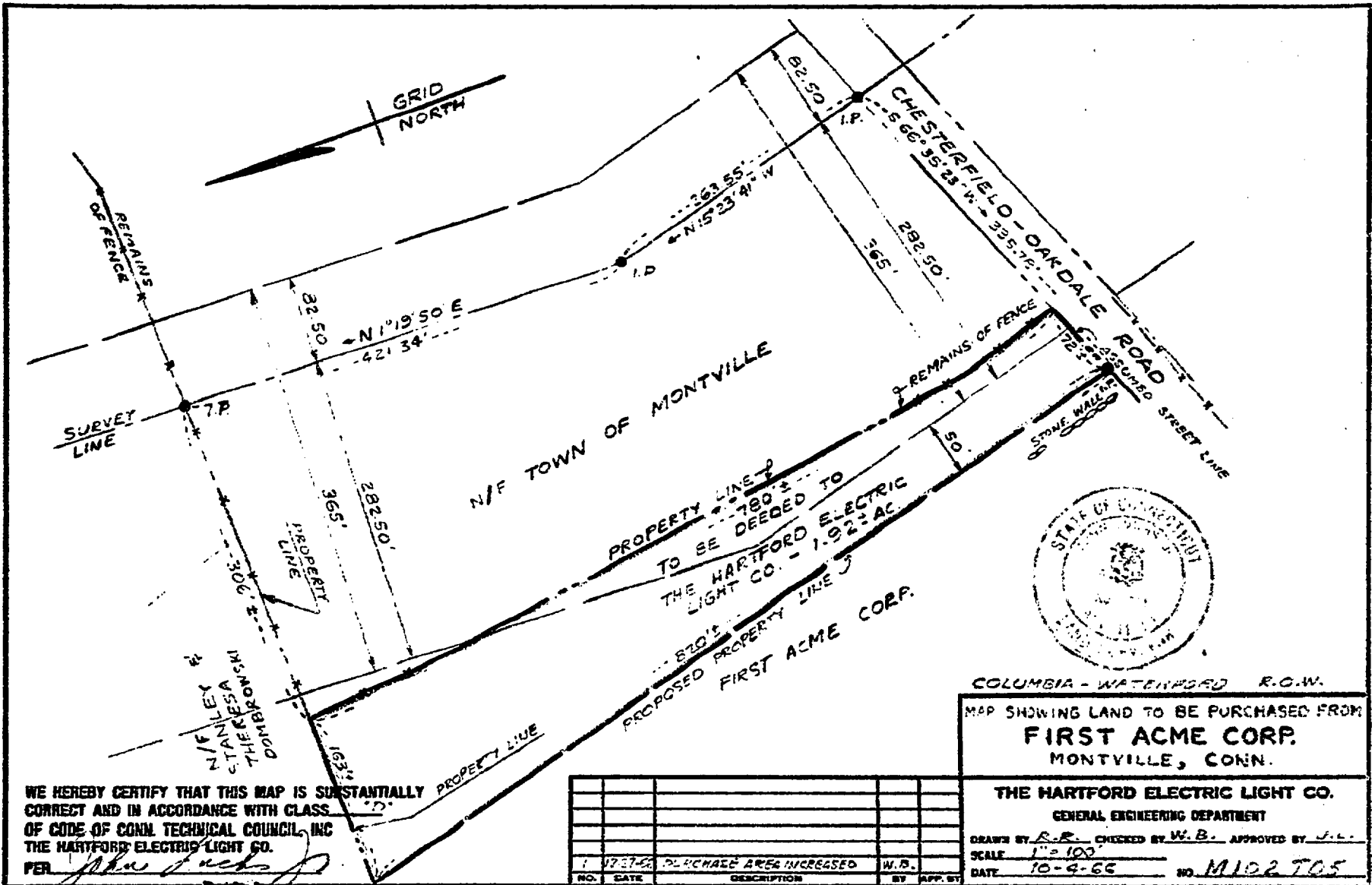
John Luchs Jr.

COLUMBIA - WATERFORD R.O.W.
 LAND TO BE PURCHASED FROM
 STANLEY & THERESA DOMBROWSKI
 MONTVILLE, CONN.
 THE HARTFORD ELECTRIC LIGHT CO.
 GENERAL ENGINEERING DEPARTMENT
 DRAWN BY R.R. CHECKED BY W.B. APPROVED BY R.C.B.
 SCALE 1" = 100'
 DATE 4-17-68 NO. C257E20

NO.	DATE	DESCRIPTION	BY	APP. BY

0-51.9-110

SHEET No. 7A



WE HEREBY CERTIFY THAT THIS MAP IS SUBSTANTIALLY CORRECT AND IN ACCORDANCE WITH CLASS. OF CODE OF CONN. TECHNICAL COUNCIL, INC THE HARTFORD ELECTRIC LIGHT CO.

PER *[Signature]*

NO.	DATE	DESCRIPTION	BY	APP. BY
1	10-27-66	PURCHASED AREA INCREASED	W.B.	

COLUMBIA - WATERBURY R.O.W.
 MAP SHOWING LAND TO BE PURCHASED FROM
FIRST ACME CORP.
 MONTVILLE, CONN.

THE HARTFORD ELECTRIC LIGHT CO.
 GENERAL ENGINEERING DEPARTMENT

DRAWN BY *R.R.* CHECKED BY *W.B.* APPROVED BY *J.L.*
 SCALE 1" = 100'
 DATE 10-9-66 NO. M102705