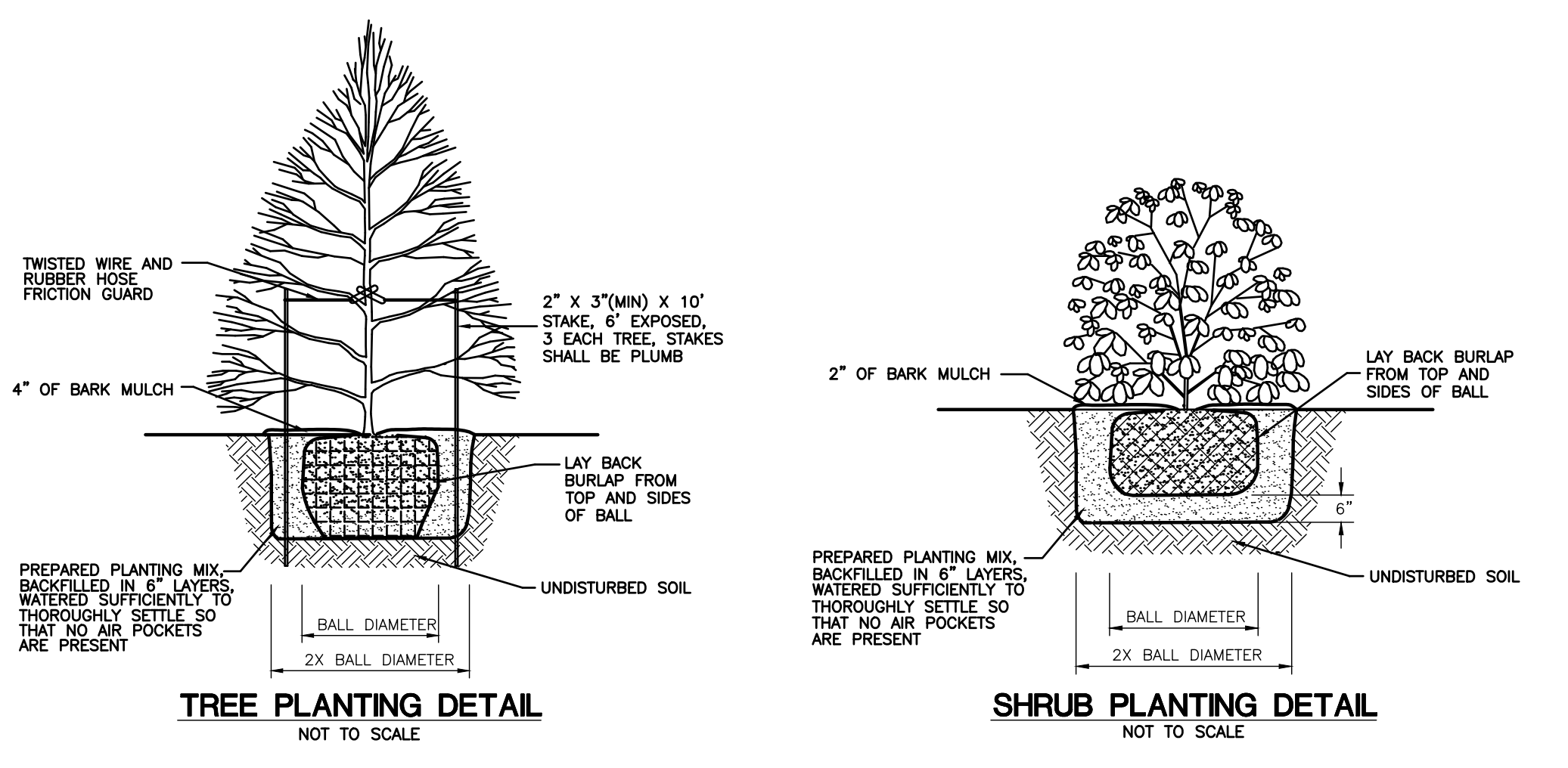


- NOTES:**
1. SIGNS AND PAINTED PAVEMENT MARKINGS SHALL CONFORM TO THE MANUAL ON UNIFORM TRAFFIC CONTROL DEVICES FOR STREETS AND HIGHWAYS, LATEST EDITION.
 2. SIGNS SHALL BE INSTALLED IN ACCORDANCE WITH STATE OF CT D.O.T. STANDARDS.
 3. SIGNS AND POSTS SHALL CONFORM TO ARTICLE 12.08 OF THE DOT 818 SPECIFICATIONS.
 4. SIGN COLORS SHALL CONFORM TO DOT SPECIFICATIONS. ALL COLORS SHALL BE RETROREFLECTIVE WITH THE EXCEPTION OF BLACK WHICH SHALL BE OPAQUE.
 5. SIGNS SHALL BE "BRIGHT WIDE ANGLE RETROREFLECTIVE SHEETING".
 6. SIGNS SHALL BE ALUMINUM, 0.100 THICK UNLESS OTHERWISE SPECIFIED.
 7. PAINTED PAVEMENT MARKINGS SHALL CONFORM WITH ARTICLE 12.09 OF THE DOT 817.
 8. STOP BARS SHALL BE 12" WIDE WHITE EPOXY RESIN.
 9. PARKING LOT STRIPING, PARKING STALL STRIPING, AND HATCHING SHALL BE 4" WIDE WHITE EPOXY RESIN STRIPES.

TRAFFIC SIGNING & PAVEMENT MARKING DETAILS
NOT TO SCALE

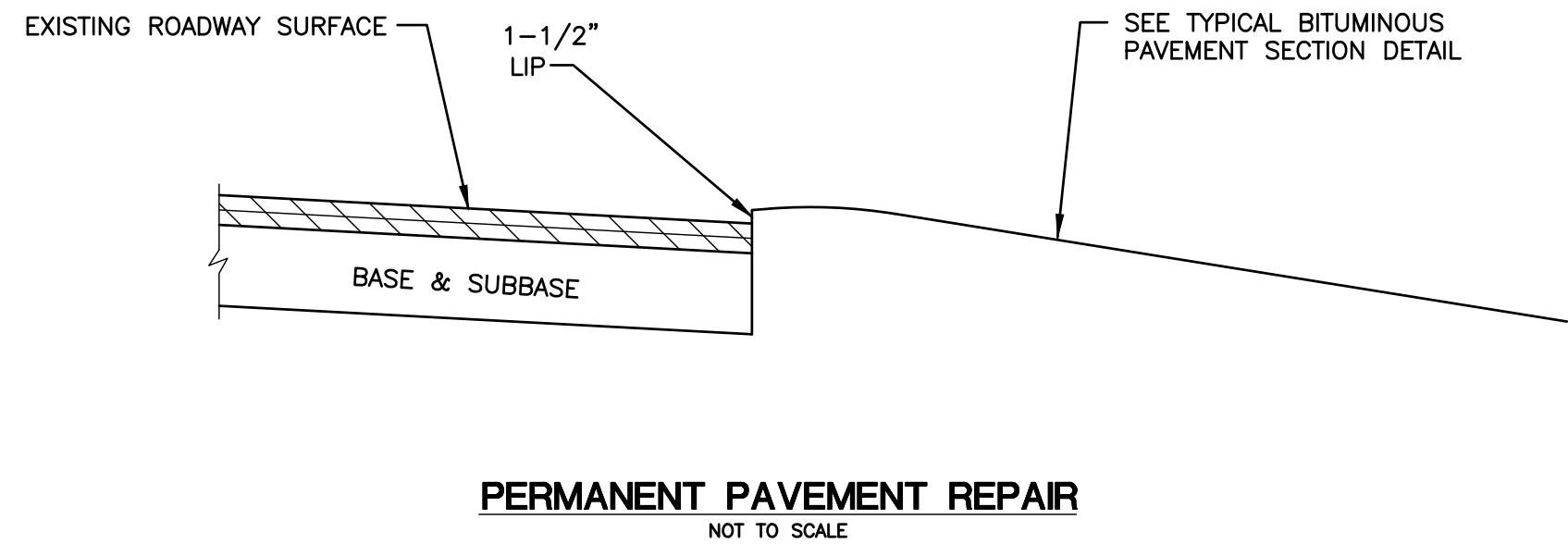


LANDSCAPE SCHEDULE

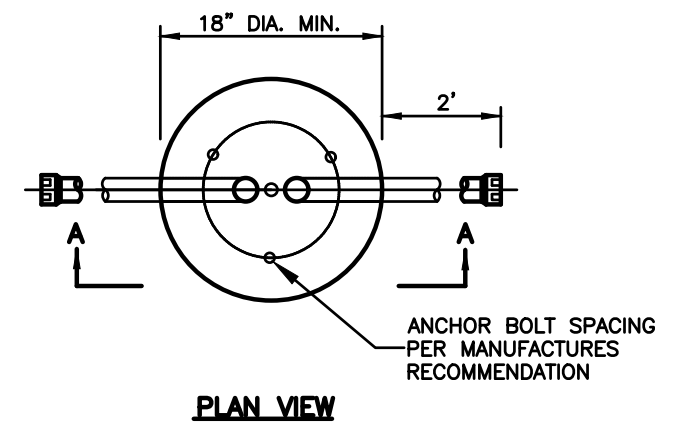
Key	Botanical Name	Common Name	Size	Quantity
Evergreen Trees				
Tp	Thuja plicata 'Green Giant'	Giant Arborvitae	6' ht.	9
Deciduous Trees				
Ar	Acer Rubrum	Red Maple	6' ht., 3" cal.	4
Po	Prunus x 'Okame'	Okame Cherry	6' ht., 3" cal.	2
Shrubs				
Iv	Ilex Verticillata	Winterberry Holly	18" ht.	12
Vr	Viburnum Cognatum	Arrowood Viburnum	18" ht.	12
Ca	Clethra Alnifolia	Sweet Pepperbush	18" ht.	12

LANDSCAPE NOTES

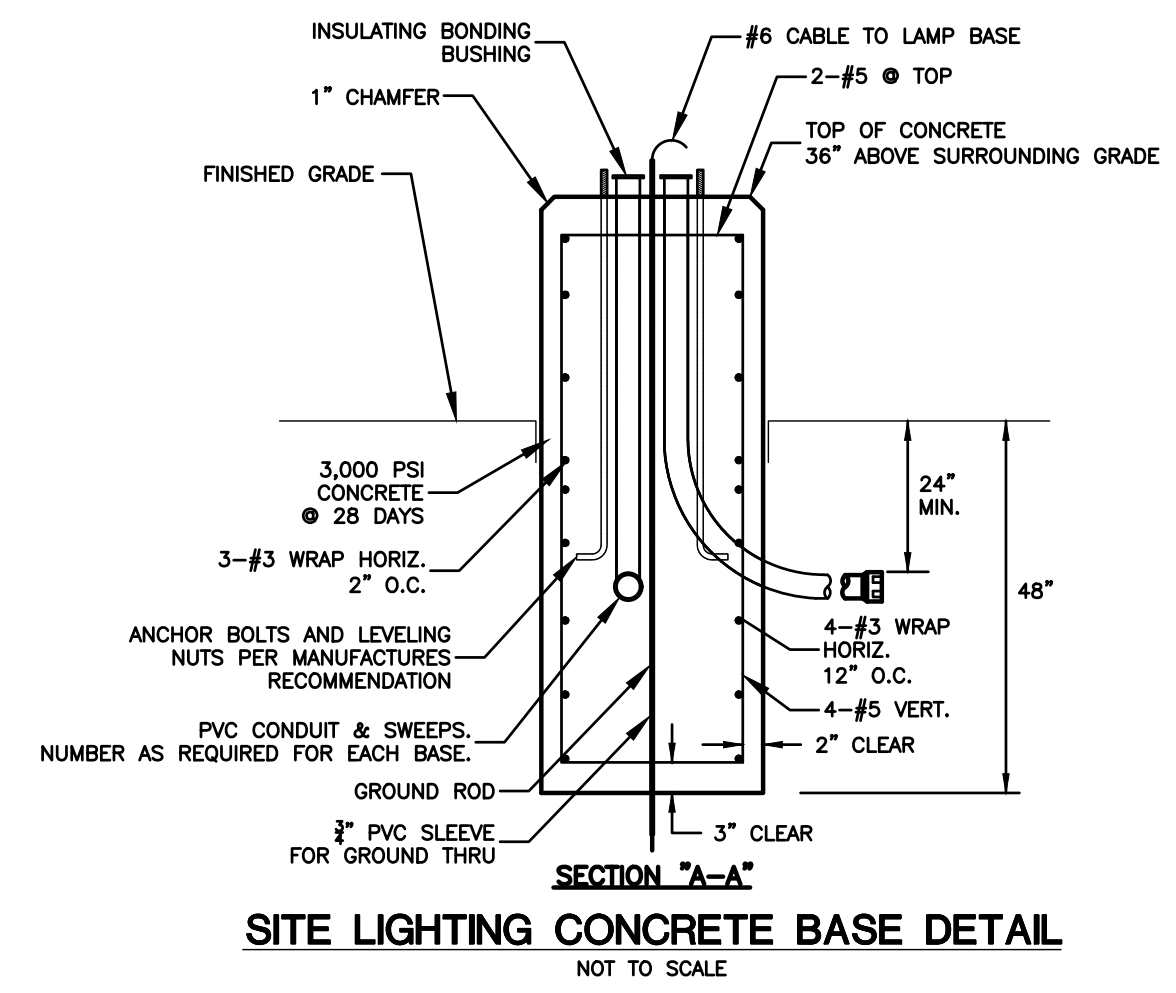
1. ALL PLANTS SHALL BE NURSERY GROWN AND CONFORM TO THE LATEST EDITION OF ANSI 260.1, AMERICAN STANDARD FOR NURSERY STOCK.
2. ALL SIZES NOTED IN THE LANDSCAPE SCHEDULE ARE MINIMUMS.
3. NO SUBSTITUTION OF PLANT MATERIALS SHALL BE ALLOWED WITHOUT THE PRIOR WRITTEN CONSENT OF THE PROJECT OWNER AND THE TOWN ZONING OFFICIAL.
4. PLANTING MIXTURE FOR TREES AND SHRUBS:
 - 1 PART DEHYDRATED COW MANURE OR COMPOSTED ORGANIC MATERIAL
 - 2 PARTS PEAT MOSS AND 5 PARTS TOPSOIL
5. FERTILIZER: TO BE COMPLETE PLANT FOOD WITH A GUARANTEED ANALYSIS OF 10-10-10 UNLESS OTHERWISE APPROVED BY THE OWNER. FERTILIZER SHALL CONTAIN 50% SLOW RELEASE NITROGEN AND 50% QUICK RELEASE.
6. ALL PLANT PITS MUST BE FREE DRAINING. BREAK UP THE BOTTOM OF THE HOLE BY FORK IF NECESSARY TO ENSURE PLANT HAS PROPER DRAINAGE.
7. SET ALL PLANTS IN CENTER OF PLANT PITS, PLUMB AND STRAIGHT AND AS DETAILED ON THE DRAWING. ALL PLANT MATERIAL SHALL BEAR THE SAME RELATIONSHIP TO FINISHED GRADE AS TO ORIGINAL PLANTING GRADE. PRIOR TO DIGGING, TREES SHALL BE PLANTED WITH THE JUNCTION OF ROOTS AND STEM LEVEL WITH FINISHED GRADE.
8. HANDLE BALLED AND BURLAPPED PLANTS FROM THE BALL ONLY. ONCE POSITIONED IN THE HOLE, REMOVE THE TOP 1/3 OF THE BURLAP FROM THE ROOT BALL WITHOUT DISTURBING THE ROOTS.
9. FACE EACH PLANT TO GIVE THE BEST APPEARANCE.
10. FILL PLANT PITS 2/3 THEIR DEPTH WITH PREPARED PLANTING MIXTURE, WATER THOROUGHLY AND ALLOW TO SETTLE. COMPLETE BACK-FILLING, WATER THOROUGHLY TO ELIMINATE ANY VOIDS AND AIR POCKETS. PROVIDE ADDITIONAL BACK-FILL AS NECESSARY TO CONFORM TO REQUIRED ELEVATION AND AS DETAILED.
11. FORM SAUCER AND INSTALL MULCH OVER ENTIRE PLANT PIT AND SAUCER AREA AS DETAILED.
12. 4 INCHES SHREDDED HEMLOCK BARK MULCH OR EQUAL SHALL BE USED AROUND ALL TREES AND SHRUB PLANTINGS.
13. ALL PLANTS AND TREES SHALL BE GUARANTEED FOR A PERIOD OF ONE FULL YEAR AFTER INSPECTION AND ACCEPTANCE BY THE OWNER OR OWNER'S REPRESENTATIVE.
14. ALL DISTURBED AREAS SHALL BE LOAMED, SEEDED, FERTILIZED, AND MULCHED IN ACCORDANCE WITH THE SLOPE STABILIZATION DETAILS.
15. THE OWNER AND/OR CONTRACTOR SHALL ENSURE THAT ONLY CLEAN FILL/SOIL IS USED FOR THE SITE THAT IS FREE OF INVASIVE SPECIES.
16. NO PROPOSED PLANTINGS OR SUBSTITUTE PLANTINGS SHALL BE ALLOWED THAT ARE INCLUDED ON THE CONNECTICUT INVASIVE PLANT LIST PUBLISHED BY THE CT INVASIVE PLANTS COUNCIL (AS UPDATED).



PERMANENT PAVEMENT REPAIR
NOT TO SCALE



PLAN VIEW



SITE LIGHTING CONCRETE BASE DETAIL
NOT TO SCALE

Specifications

- EPA: 0.69 ft² (0.06 m²)
- Length: 32.71" (83.1 cm)
- Width: 14.26" (36.2 cm)
- Height H1: 7.88" (20.0 cm)
- Height H2: 2.73" (6.9 cm)
- Weight: 34 lbs (15.4 kg)

Introduction

The modern styling of the D-Series features a highly refined aesthetic that blends seamlessly with its environment. The D-Series offers the benefits of the latest in LED technology into a high performance, high efficacy, long-life luminaire.

The photometric performance results in sites with excellent uniformity, greater pole spacing and lower power density. D-Series outstanding photometry aids in reducing the number of poles required in area lighting applications with typical energy savings of 65% and expected service life of over 100,000 hours.

design select

Items marked by a shaded background qualify for the Design Select program and ship in 15 days or less. To learn more about Design Select, visit www.aerialbrands.com/designselect. *See ordering tree for details.

FEATURES & SPECIFICATIONS

INTENDED USE — These specifications are for USA standards only. Square Straight Steel is a general purpose light pole for up to 39-foot mounting heights. This pole provides a robust yet cost effective option for mounting area lights and floodlights.

CONSTRUCTION —

Pole Shaft: The pole shaft is of uniform dimension and wall thickness and is made of a weldable, grade, hot-rolled, commercial-quality steel tubing with a minimum yield of 55 KSI (1-gauge, 0.120"), or 50 KSI (7-gauge, 0.179"). Shaft is one-piece with full-length longitudinal high-frequency electric resistance weld. Uniformly square in cross-section with flat sides, small corner radii and excellent torsional qualities. Available shaft widths are 4", 5" and 6".

Pole Top: Options include 4" teardrop top, drilled for side mount feature, teardrop with drilling (includes extra hardware) and open top. Side drilled and open top poles include a removable top cap.

Handhole: A reinforced handhole with grounding provision is provided at 18" from the base on side A. Positioning the handhole lower may not be possible and requires engineering review; consult Tech Support-Outdoor for further information. Every handhole includes a cover and cover attachment hardware. The handhole has a nominal dimension of 2.5" x 5".

Base Cover: A durable ABS plastic two-piece full base cover, finished to match the pole, is provided with each pole assembly. Additional base cover options are available upon request.

Anchor Base/Bolt: Anchor base is fabricated from steel that meets ASTM A36 standards and can be altered to match existing foundations; consult factory for modifications. Anchor bolts are manufactured to ASTM F1554 Standards grade 55, (55 KSI minimum yield strength and tensile strength of 75-95 KSI). Top threaded portion (nominal 1/2") is hot-dipped galvanized per ASTM A-153.

HARDWARE — All structural fasteners are high-strength galvanized carbon steel. All non-structural fasteners are galvanized or zinc-plated carbon steel or stainless steel.

FINISH — Extra durable painted finish is coated with TGIC (Triglycidyl isocyanurate) Polyester powder that meets SA and S8 classifications of ASTM D3359. Powder-coat finishes include Dark Bronze, White, Black, and Natural Aluminum colors. Architectural Colors and Special finishes are available by quote and include, but are not limited to Paint over Hot-dipped Galvanized, RAL Colors, Custom Colors and Extended Warranty Finishes.

GOVERNMENT PROCUREMENT —

BAA — Buy American (Buy Act): Product qualifies as a domestic end product under the Buy American Act as implemented in the FAR and DFARS. Product also qualifies as manufactured in the United States under DOT Buy America regulations.

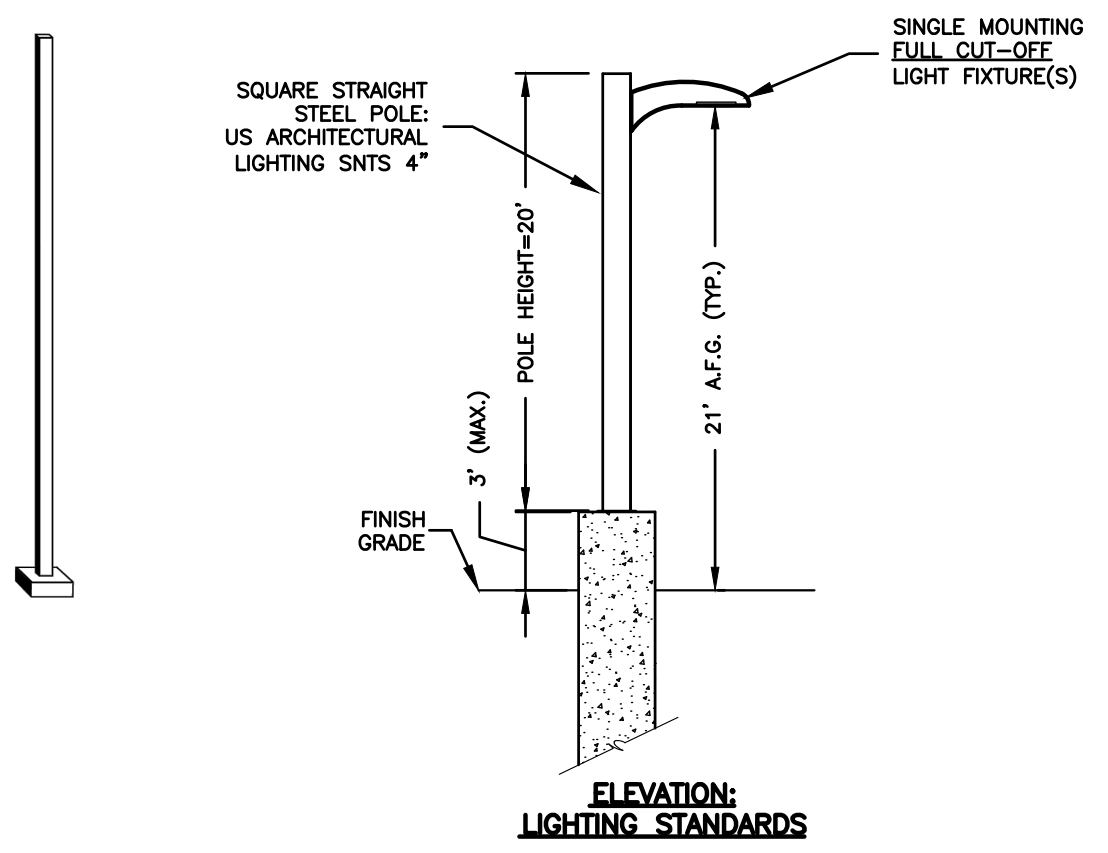
BABA — Build America Buy America: Product qualifies as produced in the United States under the definitions of the Buy America, Buy American Act.

Please refer to www.aerialbrands.com/buy-american for additional information.

INSTALLATION — Do not erect poles without having fixtures installed. Factory-supplied templates must be used when setting anchor bolts. Lithonia Lighting will not accept claim for incorrect anchorage placement due to failure to use Lithonia Lighting factory templates. If poles are stored outside, all protective wrapping must be removed immediately upon delivery to prevent finish damage. Lithonia Lighting is not responsible for the foundation design.

WARRANTY — 1-year limited warranty. This is the only warranty provided and no other statements in this specification sheet create any warranty of any kind. All other express and implied warranties are disclaimed. Complete warranty terms located at: www.aerialbrands.com/customer-warranty-terms-and-conditions

NOTE: Actual performance may differ as a result of end-user environment and application. Specifications subject to change without notice.



APPROVED BY THE MONTVILLE PLANNING AND ZONING COMMISSION

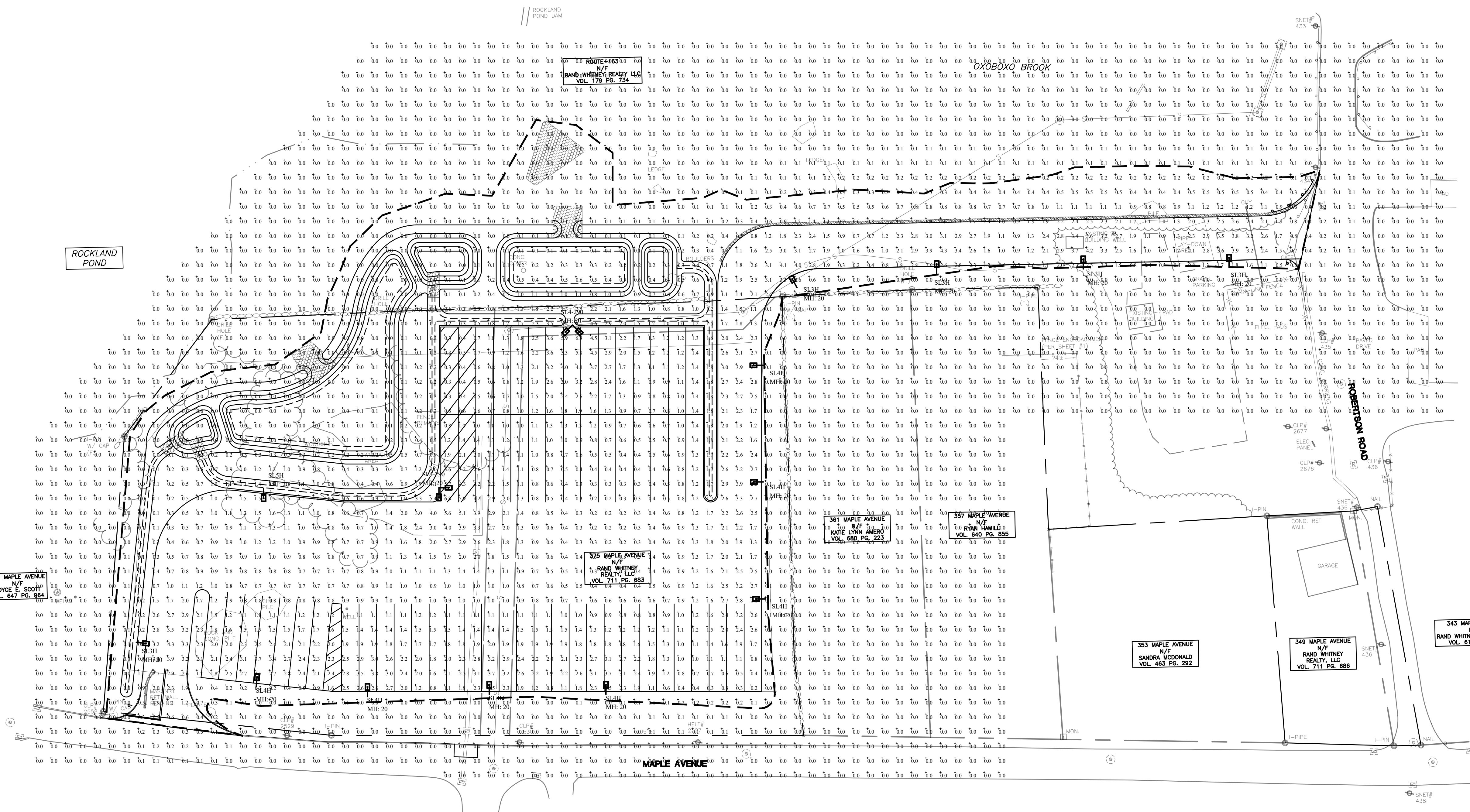
FINAL APPROVAL: _____ DATE _____

DATE OF APPROVAL: _____

CHAIRMAN SIGNATURE _____

EXPIRATION DATE: _____

<p>CLA Engineers, Inc. Civil • Structural • Surveying</p> <p>317 Main Street Norwich, CT 06360 (860) 886-1066 Fax (860) 886-9165</p>		Project No. CLA-7767F	
		Proj. Engineer D.P.H.	
1	07/11/25	VARIOUS TOWN COMMENTS	Date: 06/02/25
No.	DATE	REVISION	Sheet No.
<p>FOR PERMITTING ONLY NOT FOR CONSTRUCTION</p>		<p>RAND-WHITNEY REALTY, LLC</p> <p>PROPOSED TRAILER STORAGE 375 MAPLE AVENUE & ROUTE 163 MONTVILLE, CT</p> <p>CONSTRUCTION DETAILS 2</p>	<p>9</p>

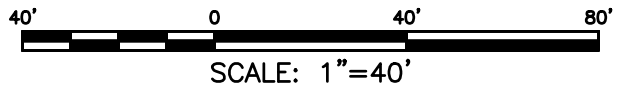


Filename: 375 Maple Ave & Route 163 - Trailer Storage Lot Lighting - Montville.AGI

Symbol	Qty	Label	Arrangement	Luminaire Lumens	Luminaire Watts	LLF	BUG Rating	Mounting Height	Description
	5	SL3H	Single	10698	123.94	0.900	B0-U0-G3	20	Lithonia DSX1 LED P4 40K 80CRI BLC3 MVOLT SPA PIR DBLXD - SSS 20 4C DM19AS DBLXD 20FT POLE
	2	SL4-290	2 @ 90 degrees	15032	123.94	0.900	B2-U0-G4	20	Lithonia DSX1 LED P4 40K 80CRI TFTM MVOLT SPA PIR DBLXD - SSS 20 4C DM29AS DBLXD 20FT POLE
	7	SL4H	Single	11049	123.94	0.900	B0-U0-G3	20	Lithonia DSX1 LED P4 40K 80CRI BLC4 MVOLT SPA PIR DBLXD - SSS 20 4C DM19AS DBLXD 20FT POLE
	1	SL5H	Single	10601	123.9373	0.900	B3-U0-G3	20	Lithonia DSX1 LED P4 40K 80CRI T5W MVOLT SPA PIR HS DBLXD - SSS 20 4C DM19AS DBLXD 20FT POLE

Label	CalcType	Units	Avg	Max	Min	Avg/Min	Max/Min	PtSpLr	PtSpTb
SITE	Illuminance	Fc	0.46	6.8	0.0	N.A.	N.A.	10	10
NORTHWEST DRIVEWAY	Illuminance	Fc	1.63	4.3	0.3	5.43	14.33		
PARKING	Illuminance	Fc	1.49	6.8	0.2	7.45	34.00		
SOUTHEAST DRIVEWAY	Illuminance	Fc	1.97	4.3	0.2	9.85	21.50		

Greg Loda / Jim Bartolotta
 Lighting Affiliates
 1208 Cromwell Ave
 Rocky Hill, CT 06067
 Website: www.lightingaffiliates.com
 Voice Number: (860) 721-1171 x 219
 Email: gloda@lightingaffiliates.com



APPROVED BY THE MONTVILLE PLANNING AND ZONING COMMISSION
 FINAL APPROVAL: _____ DATE _____
 CHAIRMAN SIGNATURE
 DATE OF APPROVAL: _____
 EXPIRATION DATE: _____

FOR PERMITTING ONLY NOT FOR CONSTRUCTION		CLA Engineers, Inc. CIVIL • STRUCTURAL • SURVEYING 317 Main Street Norwich, CT 06360 (860) 886-1066 Fax (860) 886-9165		Project No. CLA-7767F
		RAND-WHITNEY REALTY, LLC PROPOSED TRAILER STORAGE 375 MAPLE AVENUE & ROUTE 163 MONTVILLE, CT LIGHTING PLAN		Proj. Engineer D.P.H. Date: 06/02/25 Sheet No. 10
1 07/11/25 VARIOUS TOWN COMMENTS No. DATE REVISION				





APPROVED BY THE MONTVILLE PLANNING AND ZONING COMMISSION

FINAL APPROVAL: _____ DATE _____
 CHAIRMAN SIGNATURE

DATE OF APPROVAL: _____

EXPIRATION DATE: _____

20' 0 20' 40'

SCALE: 1"=20'

CLA Engineers, Inc. CIVIL • STRUCTURAL • SURVEYING 317 Main Street Norwich, CT 06360 (860) 886-1966 Fax (860) 886-9165		
No.	DATE	REVISION
FOR PERMITTING ONLY NOT FOR CONSTRUCTION		Project No. CLA-7767F Proj. Engineer D.P.H. Date: 06/02/25 Sheet No. 11
RAND-WHITNEY REALTY, LLC PROPOSED TRAILER STORAGE 375 MAPLE AVENUE & ROUTE 163 MONTVILLE, CT INTERSECTION SIGHT DISTANCE		



ENTERING SITE FROM MAPLE AVENUE



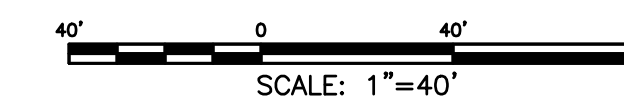
EXITING SITE TO MAPLE AVENUE



ENTERING SITE FROM ROBERTSON ROAD



EXITING SITE TO ROBERTSON ROAD



APPROVED BY THE MONTVILLE PLANNING AND ZONING COMMISSION

FINAL APPROVAL: _____

CHAIRMAN SIGNATURE DATE

DATE OF APPROVAL: _____

EXPIRATION DATE: _____

CLA Engineers, Inc. CIVIL • STRUCTURAL • SURVEYING 317 Main Street Norwich, CT 06360 (860) 886-1966 Fax (860) 886-9165		
No.	DATE	REVISION
FOR PERMITTING ONLY NOT FOR CONSTRUCTION		Project No. CLA-7767F Proj. Engineer D.P.H. Date: 06/02/25 Sheet No.
RAND-WHITNEY REALTY, LLC PROPOSED TRAILER STORAGE 375 MAPLE AVENUE & ROUTE 163 MONTVILLE, CT		12
TURNING MOVEMENTS		