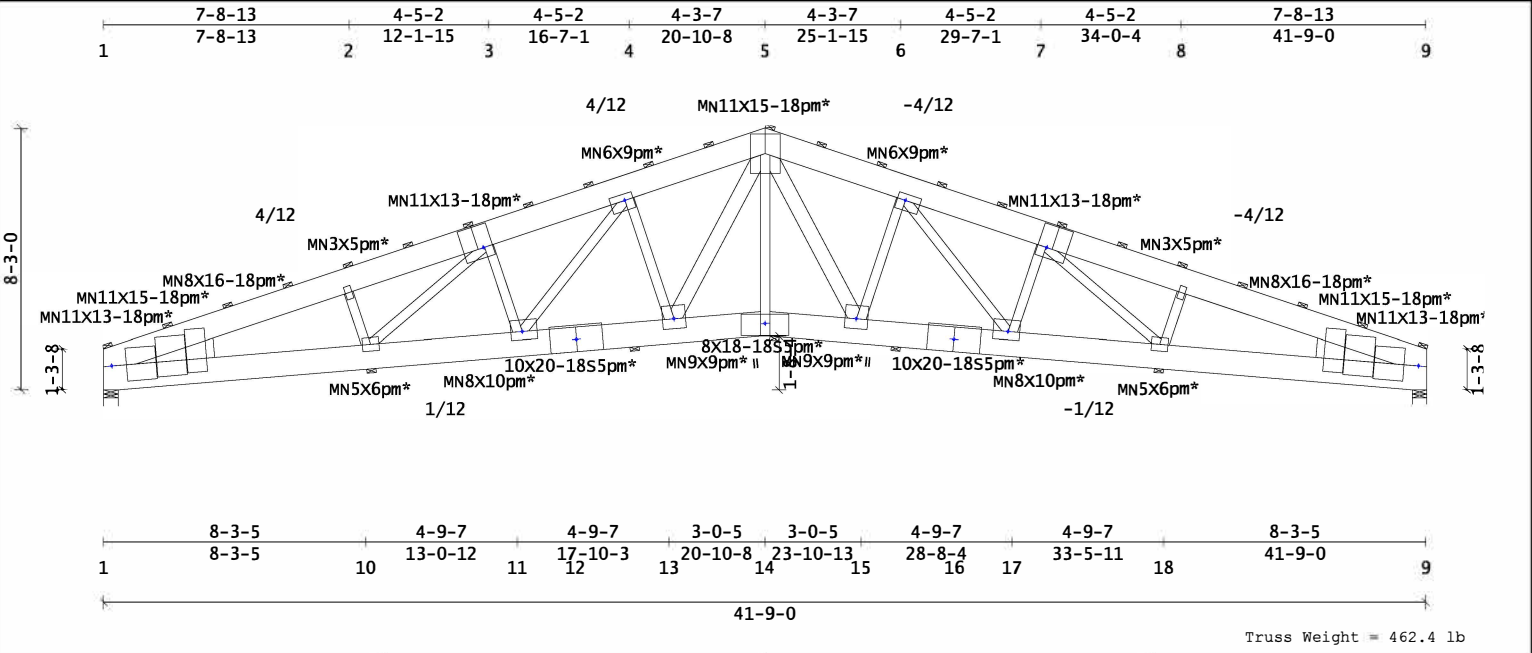


Customer: 115142281

SID:
TID:
Date: 12 / 08 / 21
Page: 1

Truss Mfr. MBI



Truss Weight = 462.4 lb

Design: TPI-2014
PSF Live Dead Dur Factors
TC 40.0 4.0 Live Wind Snow
BC 0.0 4.0 Lum 1.15 N/A 1.15
Total 48.0 Plt 1.15 N/A 1.15
Spacing: 7-06-00 o.c. Plies: 1
Repetitive Member Increase: No
Green Lumber: No Wet Service: No
Fab Tolerance: 10% Creep (Kcr) = 2.0

Material Summary

TC	2x10	SP	2400/2.0
BC	2x10	SP	2400/2.0
Webs	2x4	SP (ALSC6-2013)	#1
	2x6	SP (ALSC6-2013)	#1 5-15
13-5			
Wedge	2x8	SP (ALSC6-2013)	#1

Reaction Summary

-----Reaction Summary (Lbs)-----			
Jnt	--X--	Loc	React
1	02-12	7515	
9	41-06-04	7515	

Deflection Summary

TrussSpan	Limit	Actual (in)	Location
Vert LL	L/240	L/364 (-1.36)	14-15
Vert DL	L/120	L/999 (-0.27)	14-15
Vert CR	L/180	L/303 (-1.63)	14-15
Horz LL	1.00in	(0.54)	@Jt 9
Horz CR	1.50in	(0.65)	@Jt 9
DPL LL	2L/120	2L/999 (0.00)	14- 5

Bracing Data Summary

-----Bracing Data-----
Chords; continuous except where shown
-----Purlins-----

	---oc---	--From--	---To---	#Bays
TC	2-00-00	0	41-09-00	23
BC	7-06-00	0	41-09-00	5

Web Bracing -- None

Member Forces Summary

Max CSI in TC PANEL	2 - 3	0.88
Max CSI in BC PANEL	10 - 11	0.94
Max CSI in Web	4 - 13	0.72

...Mem...	Ten	Comp	.CSI.
TC	1-2	0	18455 0.86
	2-3	0	18013 0.88
	3-4	0	18027 0.69
	4-5	0	15604 0.58
	5-6	0	15604 0.58
	6-7	0	18028 0.69
	7-8	0	18011 0.88
	8-9	0	18453 0.86
BC	1-10	17107	0 0.92
	9-18	17105	0 0.92
	10-11	17429	0 0.94
	11-12	15527	0 0.69
	12-13	15535	0 0.67
	13-14	13423	0 0.51
	14-15	13423	0 0.51
	15-16	15535	0 0.67
	16-17	15527	0 0.69
	17-18	17429	0 0.94
Web	2-10	65	306 0.03
	3-10	0	496 0.19
	3-11	0	1761 0.30
	4-11	2487	0 0.41
	4-13	0	2509 0.72
	5-13	2868	0 0.34
	5-14	2737	0 0.45
	5-15	2868	0 0.34
	6-15	0	2509 0.72
	6-17	2487	0 0.41
	7-17	0	1761 0.30
	7-18	0	498 0.19
	8-18	65	304 0.03
MSC	14-14	0	0 0.00

Notes

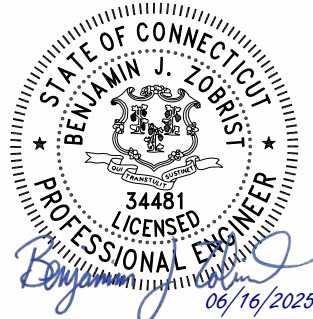
Plates designed for Cq at 0.90 and Rotational Tolerance of 10.0 degrees
A "pm" next to the plate size indicates that the plate has been user modified; see Plate Offsets for any special positioning requirements.
* = Plate designed with different Cq and/or Angle.
Single pass roller reduction factor has been used.

Plate offsets (X, Y):

(None unless indicated below)
Jnt1(11-02,00-15), Jnt3(-02-13,01-11),
Jnt4(-00-15,-01-00), Jnt6(01-00,-01-00),
Jnt7(02-13,01-11), Jnt9(-11-02,00-15),
Jnt11(00-09,00-11), Jnt12(0,00-06),
Jnt13(-00-01,00-10),
Jnt14(-00-01,-00-08), Jnt15(00-01,00-10),
Jnt16(0,00-06), Jnt17(-00-09,00-11)

Joint Stress Index (JSI):

Jnt1(0.82), Jnt1(0.97), Jnt1(0.82),
Jnt2(0.60), Jnt3(0.86), Jnt4(0.78),
Jnt5(0.83), Jnt6(0.77), Jnt7(0.86),
Jnt8(0.60), Jnt9(0.82), Jnt9(0.97),
Jnt9(0.82), Jnt10(0.61), Jnt11(0.76),
Jnt12(0.83), Jnt13(0.63), Jnt14(0.84),
Jnt15(0.63), Jnt16(0.83), Jnt17(0.76),
Jnt18(0.61)



CERTIFICATE MUST BE VERIFIED ON ELECTRONIC COPIES. PRINTED COPIES OF THIS DOCUMENT ARE NOT CONSIDERED SIGNED AND SEALED.



Component Solutions
Truss Studio V
2021.5.0.261