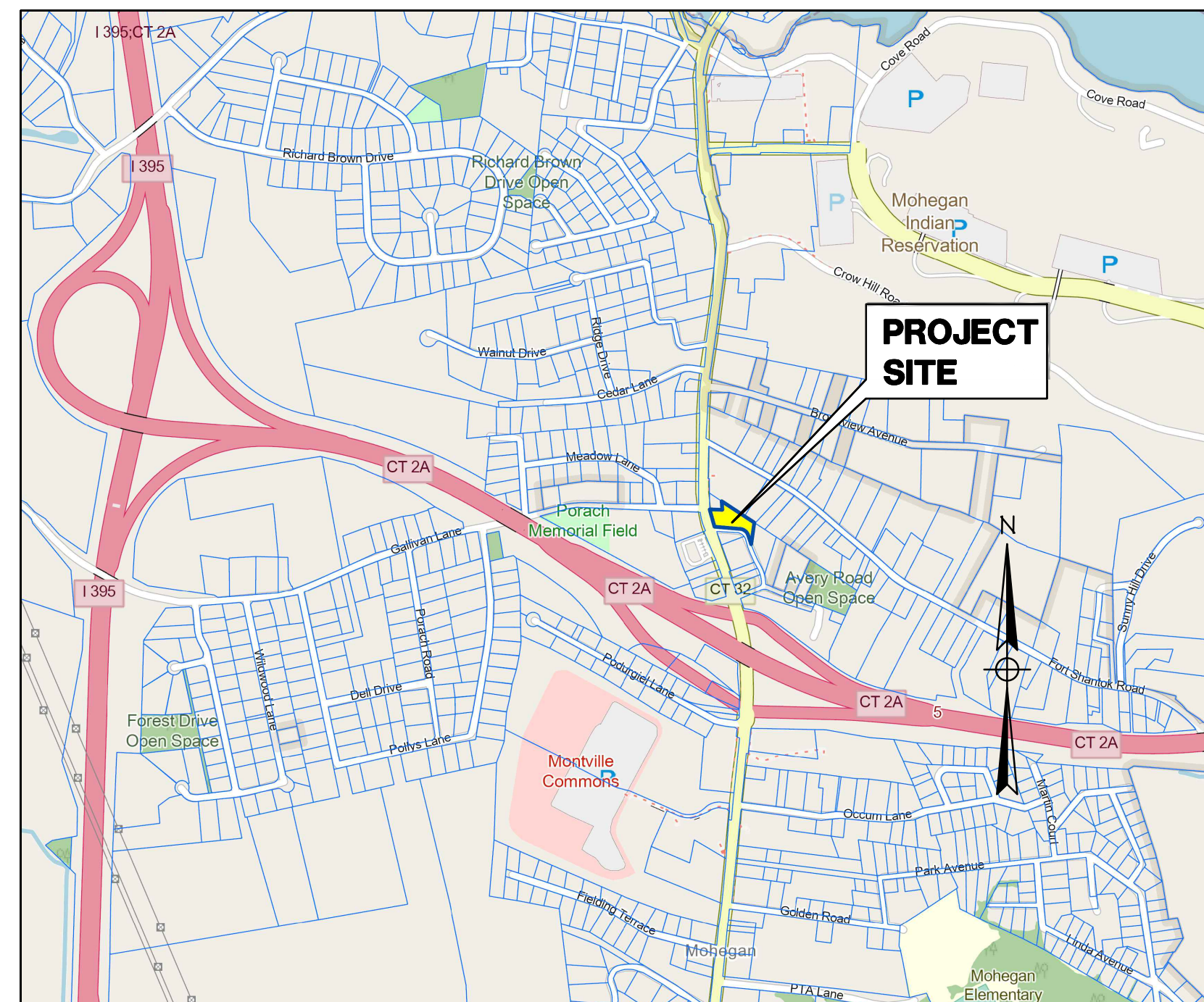


PROPOSED RETAIL & RESIDENTIAL PROJECT

2227 NORWICH-NEW LONDON TURNPIKE UNCASVILLE, CT

LEGEND

PROPERTY LINE	---
EDGE OF PAVEMENT	====
DRAINAGE	D
WATER	W
SEWER	S
GAS	G
ELECTRIC	E
CONTOUR	-21-
TREE LINE	~~~~~
GUIDERAIL	—•—•—
SIGNS	••
CATCH BASIN	⊠
IRON PIN, IRON PIPE	⊙
FIRE HYDRANT	⊙
ELECTRIC MANHOLE	⊙
SEWER MANHOLE	⊙
GAS GATE, WATER GATE	⊙
LAMP	⊙



LOCATION MAP
SCALE: 1" = 1000'

INDEX TO DRAWINGS

DRAWING NO.	DESCRIPTION OF DRAWINGS
1	BOUNDARY SURVEY
2	SITE PLAN
3	EROSION & SEDIMENT CONTROL PLAN
4	GRADING & DRAINAGE PLAN
5	LANDSCAPING PLAN
6	SITE DETAILS
7	E&S DETAILS
8	CT DOT DETAILS

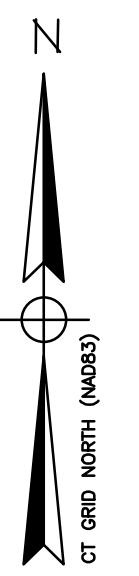
PROPOSED USE: MIXED-USE
APPLICANT: UNCASVILLE PROPERTY, L.L.C.
 21 TWO MILE HILL ROAD
 WATERFORD, CT 06385
MAP/BLOCK/LOT: 103/092/000

JUNE 2025

Green Site Design LLC
 CONSULTING CIVIL ENGINEERS
 317 Main Street Norwich, CT 06360
 (860) 886-1966 Fax (860) 886-9165

APPROVED BY THE MONTVILLE PLANNING & ZONING COMMISSION

CHAIRMAN / SECRETARY _____ DATE _____

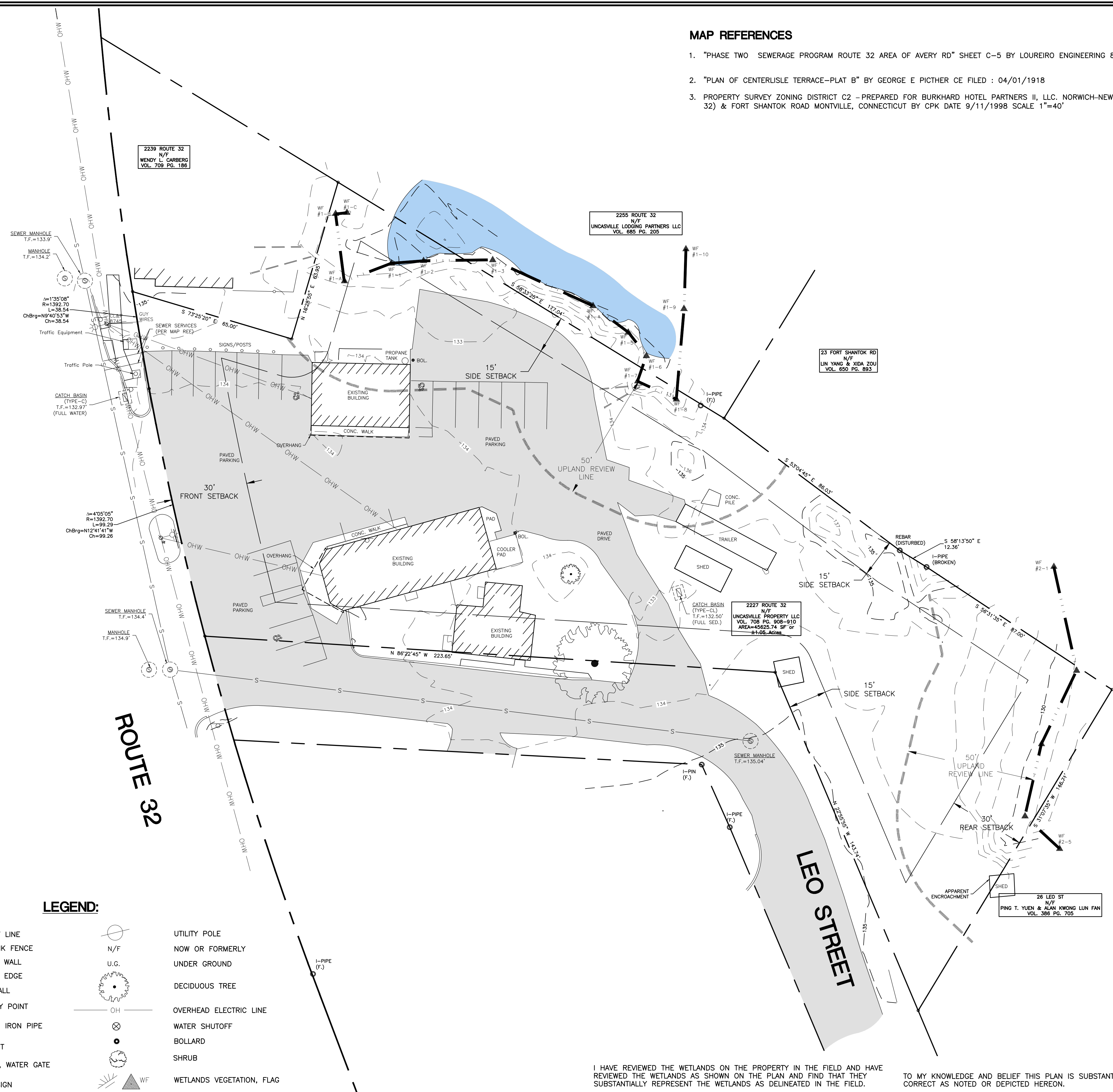


MAP REFERENCES

1. "PHASE TWO SEWERAGE PROGRAM ROUTE 32 AREA OF AVERY RD" SHEET C-5 BY LOUREIRO ENGINEERING 8-27-85 SCALE 1" =40'
2. "PLAN OF CENTERLISLE TERRACE-PLAT B" BY GEORGE E PICHTER CE FILED : 04/01/1918
3. PROPERTY SURVEY ZONING DISTRICT C2 -PREPARED FOR BURKHARD HOTEL PARTNERS II, LLC. NORWICH-NEW LONDON ROAD (CT RTE. 32) & FORT SHANTOK ROAD MONTVILLE, CONNECTICUT BY CPK DATE 9/11/1998 SCALE 1"=40'

SURVEY NOTES

1. THIS SURVEY AND MAP HAS BEEN PREPARED IN ACCORDANCE WITH SECTION 20-300b-1 THRU 20-300b-20 OF THE REGULATIONS FOR STATE AGENCIES "STANDARDS FOR SURVEYS AND MAPS IN THE STATE OF CONNECTICUT" AS ENDORSED BY THE CONNECTICUT ASSOCIATION OF LAND SURVEYORS, INC.
 - A. TYPE OF SURVEY: BOUNDARY AND TOPOGRAPHIC SURVEY
 - B. BOUNDARY DETERMINATION CATEGORY: RESURVEY
 - C. HORIZONTAL ACCURACY: A-2
 - D. VERTICAL ACCURACY: N/A
 - E. TOPOGRAPHIC ACCURACY: T-2
 - F. INTENT: TO DEPICT EXISTING CONDITIONS FOR THE SUBJECT PARCEL
2. DATE OF LATEST FIELD WORK: APRIL 2025
3. HORIZONTAL ORIENTATION IS CT N.A.D 83 BASED ON FIELD GPS OBSERVATIONS
4. VERTICAL DATUM IS N.A.V.D 88 BASED ON FIELD GPS OBSERVATIONS
5. BOUNDARY LINES OF ADJOINING PROPERTIES ARE NOT TO BE CONSTRUED AS HAVING BEEN THE RESULT OF A FIELD SURVEY AND ARE SHOWN FOR INFORMATIONAL PURPOSES ONLY
6. THE WORD "CERTIFY" IS UNDERSTOOD TO BE AN EXPRESSION OF THE PROFESSIONAL OPINION OF THE LAND SURVEYOR TO THE BEST OF THEIR KNOWLEDGE, INFORMATION AND BELIEF.
7. STONE WALLS AND/OR FENCES SHOWN AS BOUNDARIES MAY HAVE IRREGULARITIES BETWEEN POINTS INDICATED ON THE SURVEY.
8. A PRINT OR MYLAR OF THIS MAP IS NOT VALID UNLESS IT CONTAINS THE SEAL AND LIVE SIGNATURE OF THE SURVEYOR



LEGEND:

- | | | | |
|--|----------------------|--|------------------------------|
| | PROPERTY LINE | | UTILITY POLE |
| | CHAIN-LINK FENCE | | NOW OR FORMERLY UNDER GROUND |
| | RETAINING WALL | | UNDER GROUND |
| | WETLANDS EDGE | | DECIDUOUS TREE |
| | STONE WALL | | OVERHEAD ELECTRIC LINE |
| | BOUNDARY POINT | | WATER SHUTOFF |
| | IRON PIN, IRON PIPE | | BOLLARD |
| | MONUMENT | | SHRUB |
| | GAS GATE, WATER GATE | | WETLANDS VEGETATION, FLAG |
| | TRAFFIC SIGN | | |
| | SEWER MANHOLE | | |

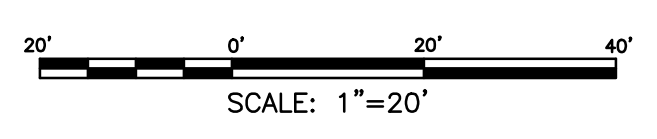
I HAVE REVIEWED THE WETLANDS ON THE PROPERTY IN THE FIELD AND HAVE REVIEWED THE WETLANDS AS SHOWN ON THE PLAN AND FIND THAT THEY SUBSTANTIALLY REPRESENT THE WETLANDS AS DELINEATED IN THE FIELD.

TO MY KNOWLEDGE AND BELIEF THIS PLAN IS SUBSTANTIALLY CORRECT AS NOTED OR DEPICTED HEREON.

ROBERT C. RUSSO
CERTIFIED SOIL SCIENTIST

DATE

RYAN J. CHEVERIE, L.L.S. #70454



<p>CLA Engineers, Inc. CIVIL • STRUCTURAL • SURVEYING</p> <p>317 Main Street Norwich, CT 06360 (860) 886-1966 Fax (860) 886-9165</p>		Project No. CLA-8078
		Proj. Surveyor R.J.C.
<p>BOUNDARY AND TOPOGRAPHIC SURVEY</p> <p>2227 NORWICH-NEW LONDON TURNPIKE</p> <p>TOWN OF MONTVILLE CT, 06382</p>		Date: MAR. 2025
		Sheet No. 01

ZONING COMPLIANCE CHART

ZONING DISTRICT: C-1		
ITEM	REQUIRED	PROVIDED
LOT AREA	10,000 S.F.	48,649 S.F.
LOT FRONTAGE	80 FT	138 FT
FRONT YARD SETBACK	30 FT	68 FT
SIDE YARD SETBACK	15 FT	16 FT
REAR YARD SETBACK	30 FT	209 FT
BUILDING HEIGHT	-	-

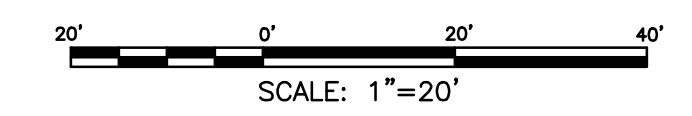
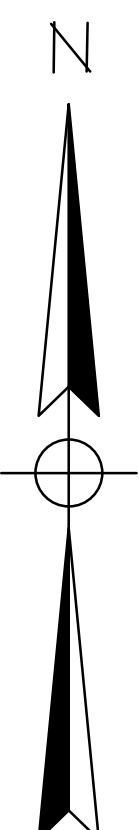
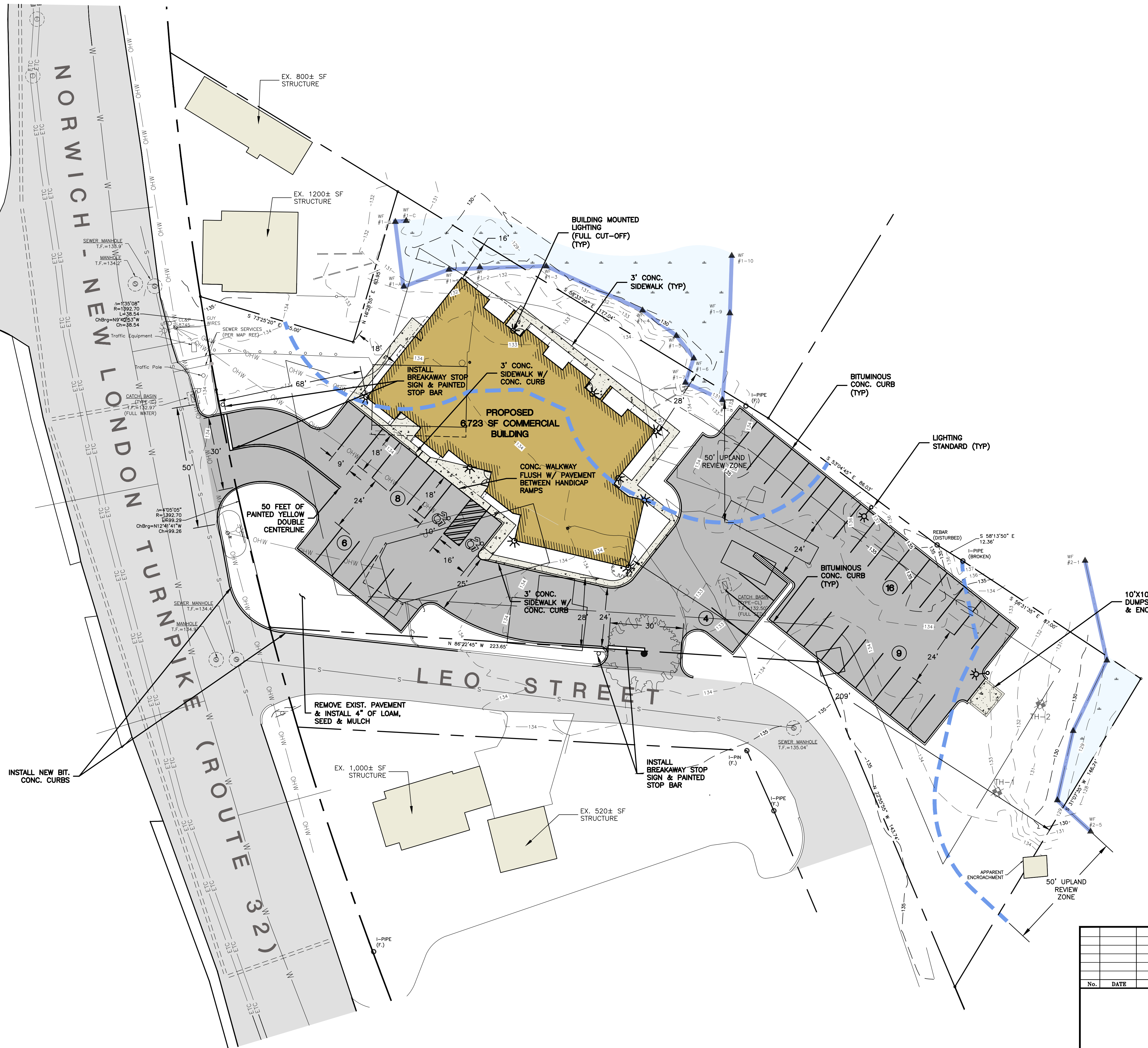
PARKING

4 STUDIO APARTMENTS @ 1 SPACE/UNIT = 4 SPACES
 (12) 1-BEDROOM APARTMENTS @ 1 SPACE/UNIT* = 12 SPACES
 6,650 SF RETAIL/BUSINESS @ 1 SPACE/250 SF = 27 SPACES

43 PARKING SPACES REQUIRED
 43 PARKING SPACES PROVIDED

*AS PER ITE PARKING GENERATION MANUAL

GALLIVAN LN



<p>GREEN SITE DESIGN LLC 317 Main Street Norwich, CT 06360 (860) 886-1966 Fax (860) 886-9165</p>		<p>Project No. GSD-77</p>
<p>UNCASVILLE PROPERTY, L.L.C.</p>		<p>Proj. Engineer E.M.B.</p>
<p>2227 ROUTE 32 UNCASVILLE, CT</p>		<p>Date: 6/26/25</p>
<p>SITE PLAN</p>		<p>Sheet No. 2</p>

Y:\PROJECTS\717 - 2227 Route 32\GSD-77 - 2227 Route 32 Conceptual Plan 01.dwg, 3/4/2025 2:40:25 PM, DWG To PDF.pc3

GALLIVAN LN

NORWICH - NEW LONDON TURNPIKE (ROUTE 32)

LEO STREET

PROPOSED 6,723 SF COMMERCIAL BUILDING
FF=136.5

CONNECT TO EXIST. SEWER SERVICE & INSTALL SEWER CLEANOUT (CONTRACTOR TO VERIFY EXIST. INVERT ELEVATION PRIOR TO START OF CONSTRUCTION)

INSTALL UNDERGROUND ELECTRICAL, TELEPHONE & CABLE SERVICE

CONNECT TO EXIST. WATER SERVICE

WATER SERVICE

INSTALL SEWER CLEANOUT

6" SEWER SERVICE

HANDICAP RAMP

HANDICAP RAMP

ROOF DRAIN PIPE

15" HDPE

15" HDPE

15" HDPE

15" HDPE

15" HDPE

15" HDPE

15" HDPE

15" HDPE

15" HDPE

15" HDPE

15" HDPE

15" HDPE

15" HDPE

15" HDPE

REMOVE EXIST. CATCH BASIN

DOUBLE CB - TYPE C
TF=133.5
INV=130.5

FLARED END UNIT
INV=130.4

11'x17' MODIFIED RIPRAP SPLASH PAD

3:1 SLOPE

FOREBAY

12' WIDE MODIFIED RIPRAP LEVEL SPREADER
BOTTOM OF RIPRAP
ELEV=132.0

INSTALL NORTH AMERICAN GREEN
S=150 ON ALL SLOPES

DOUBLE CB - TYPE C
TF=134.5
INV=131.5

DOUBLE CB - TYPE C
TF=134.0
INV=131.0

DOUBLE CB - TYPE C
TF=134.5
INV=131.5

DOUBLE CB - TYPE C
TF=134.0
INV=131.0

DOUBLE CB - TYPE C
TF=134.5
INV=131.5

DOUBLE CB - TYPE C
TF=134.0
INV=131.0

DOUBLE CB - TYPE C
TF=134.5
INV=131.5

DOUBLE CB - TYPE C
TF=134.0
INV=131.0

DOUBLE CB - TYPE C
TF=134.5
INV=131.5

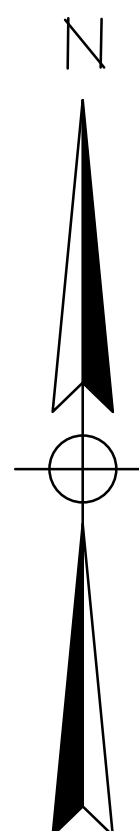
15' WIDE MODIFIED RIPRAP LEVEL SPREADER
BOTTOM OF RIPRAP
ELEV=132.0

50' UPLAND REVIEW ZONE

50' UPLAND REVIEW ZONE

50' UPLAND REVIEW ZONE

50' UPLAND REVIEW ZONE



SCALE: 1"=20'

GREEN SITE DESIGN LLC

317 Main Street Norwich, CT 06360
(860) 886-1966 Fax (860) 886-9165

No. DATE REVISION

UNCASVILLE PROPERTY, L.L.C.

2227 ROUTE 32
UNCASVILLE, CT

GRADING PLAN

Project No. GSD-77
Proj. Engineer E.M.B.
Date: 6/26/25
Sheet No.

4

Y:\PROJECTS\77 - 2227 Route 32\GSD-77 - 2227 Route 32\Conceptual Plan 0.dwg, 3/4/2025, 3:37:23 PM, DWG to PDF.pc3

GALLIVAN LN

NORWICH - NEW LONDON TURNPIKE (ROUTE 32)

LEO STREET

EX. 800± SF STRUCTURE

EX. 1200± SF STRUCTURE

PROPOSED 6,723 SF COMMERCIAL BUILDING

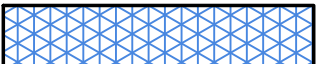
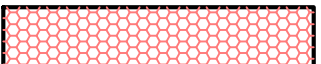
EX. 1,000± SF STRUCTURE

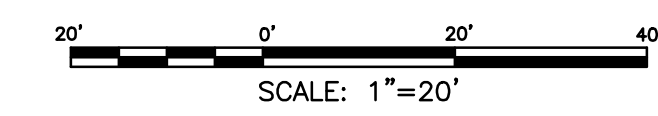
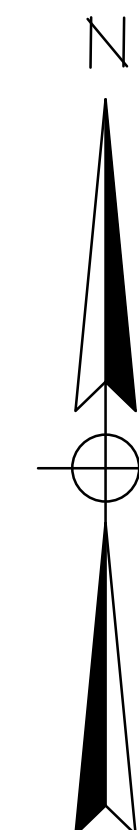
EX. 520± SF STRUCTURE

SEEDING SCHEDULE

THE FOLLOWING SEEDING MIXTURES SHALL BE PROVIDED ONLY ON AREAS TO BE MAINTAINED AS LAWN:

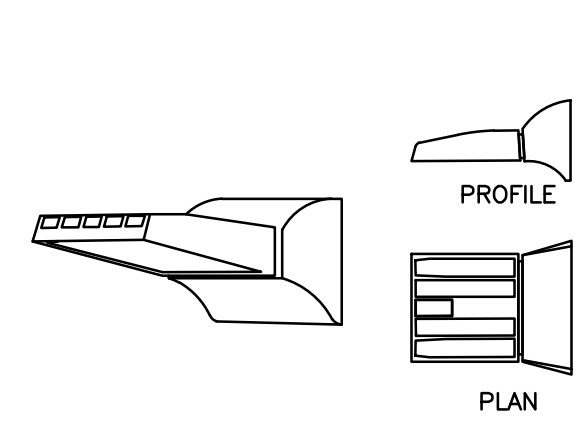
- KENTUCKY BLUE GRASS 20 LB's/AC
- CREeping RED FESCUE 20 LB's/AC
- PERENNIAL RYEGRASS 5 LB's/AC

-  DISTURBED AREA MIX SEEDING
-  WETLAND MIX (NEW ENGLAND EROSION CONTROL/RESTORATION FOR MOIST SITES)



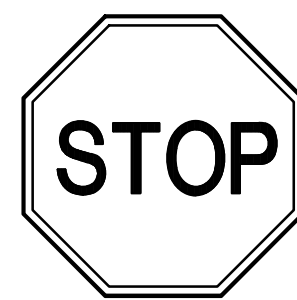
<p style="text-align: center;">GREEN SITE DESIGN LLC</p> <p style="text-align: center;">317 Main Street Norwich, CT 06360 (860) 886-1966 Fax (860) 886-9165</p>			Project No. GSD-77
			Proj. Engineer E.M.B.
<p>UNCASVILLE PROPERTY, L.L.C.</p> <p>2227 ROUTE 32 UNCASVILLE, CT</p> <p>LANDSCAPING PLAN</p>			Date: 6/26/25
			Sheet No. 5

Y:\PROJECTS\77 - 2227 Route 32\GSD-77 - 2227 Route 32 Conceptual Plan 09 Aug 2025 3:08:44 PM DWG TO PDF.dwg



FULL CUTOFF:
APEX LIGHTING SOLUTIONS
BO-UO-GP

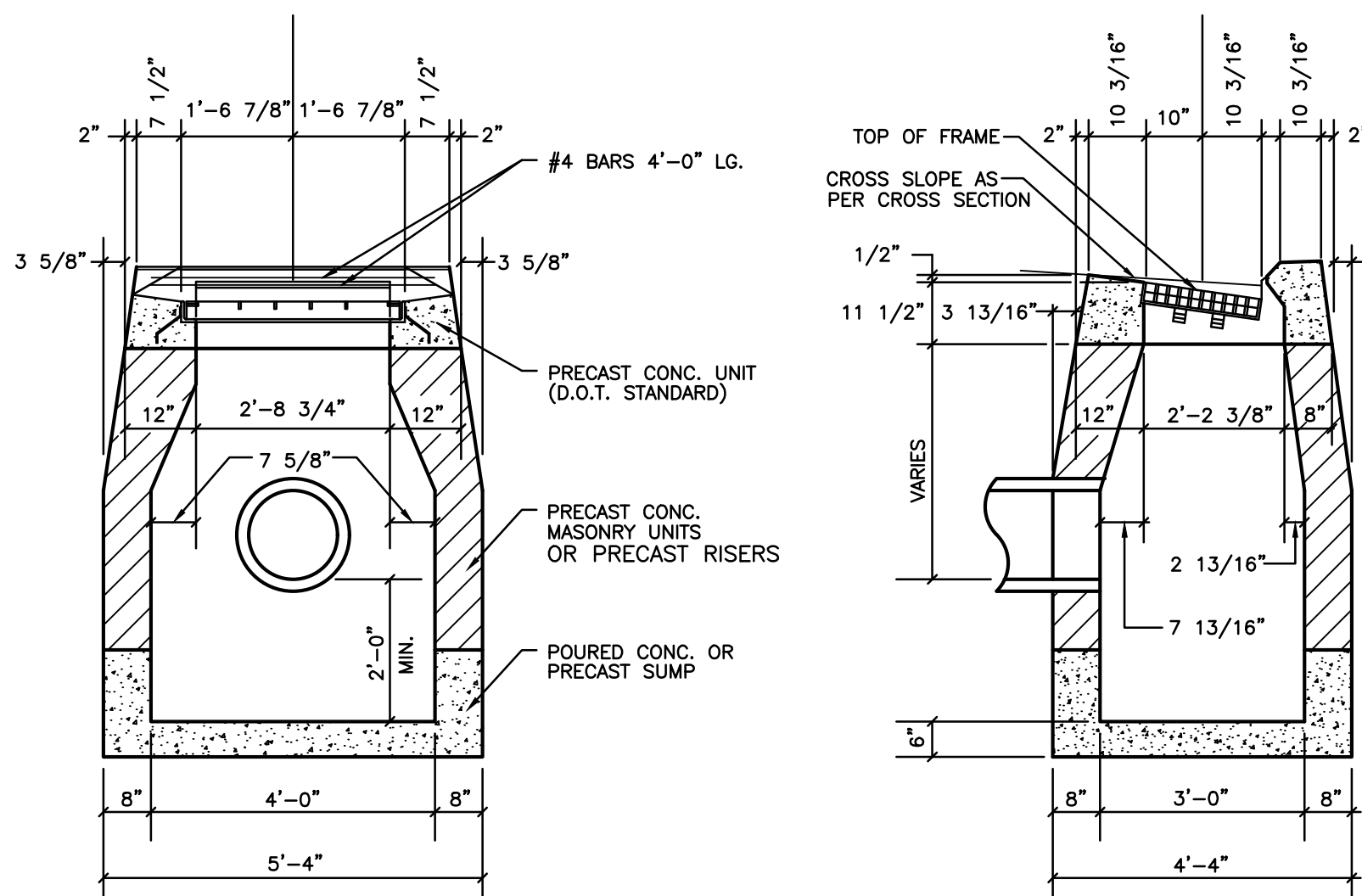
WALLPACK
NOT TO SCALE



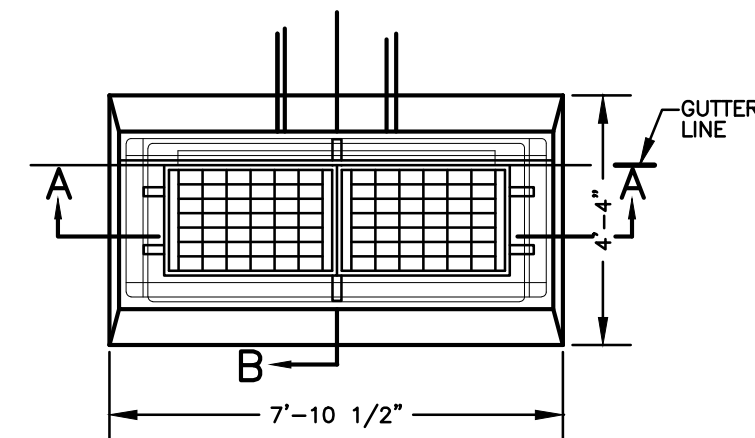
NOTE:
SIGNS TO BE INSTALLED IN
ACCORDANCE WITH STATE OF
CONNECTICUT D.O.T. STANDARDS

SECURE ALL SIGNS TO 1/2" DIA.
GALVANIZED STEEL POST WITH (2)
1/4" DIA. GALVANIZED BOLTS (1
TOP, 1 BOTTOM) (TYP)

TRAFFIC SIGNAGE
NOT TO SCALE

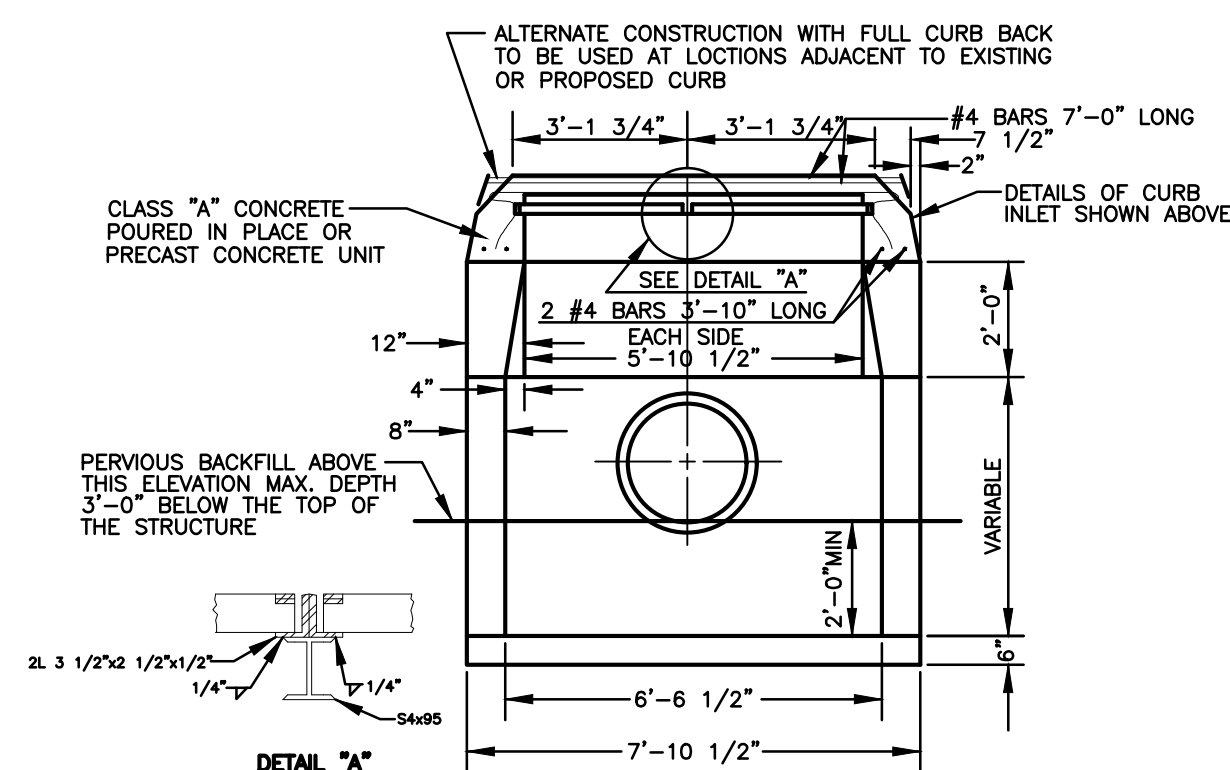


TYPE "C" CATCH BASIN DETAIL
NOT TO SCALE

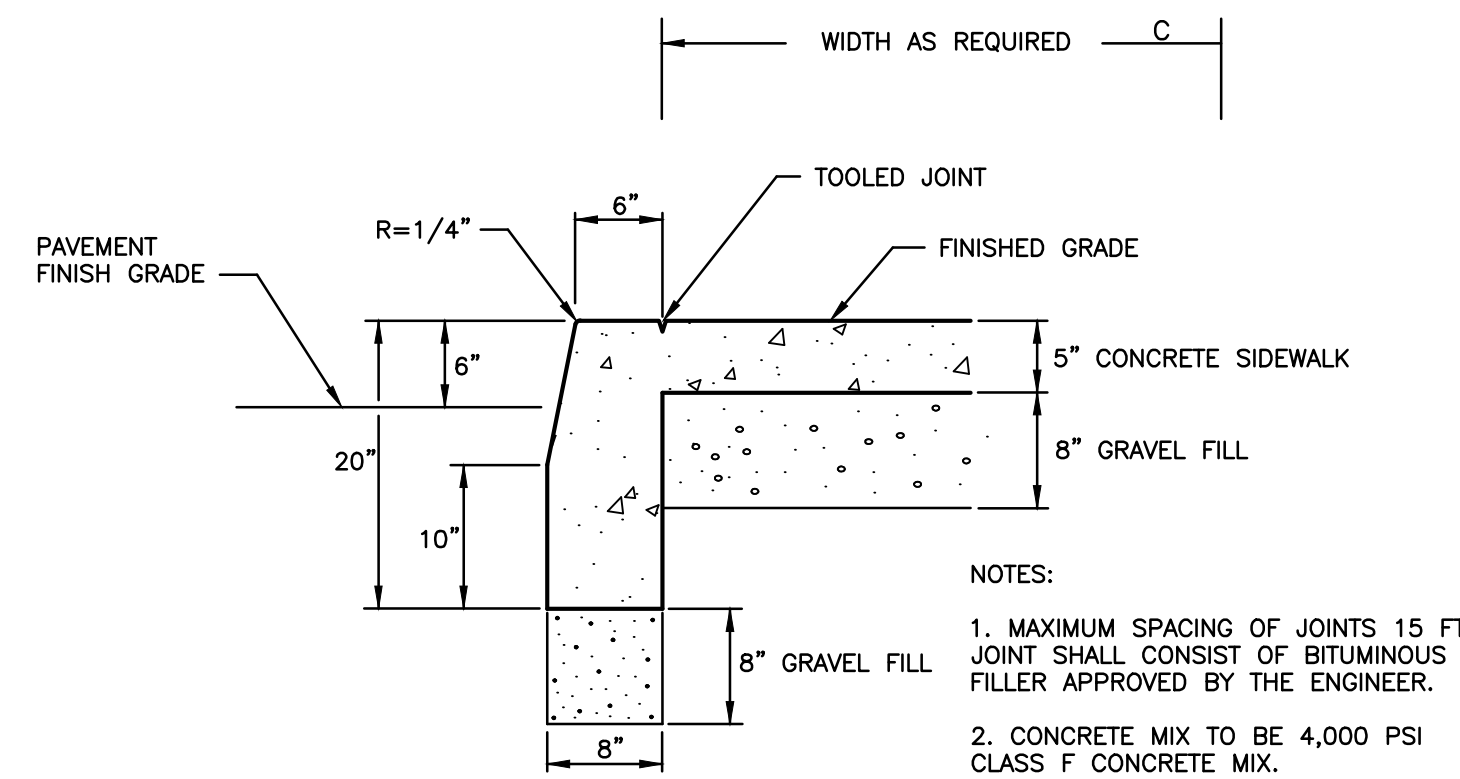


PLAN

NOTE: WHEN CATCH BASIN IS SET IN CONCRETE PAVEMENT THE 1/2" SLOPE ON THE TOP SURFACE SHALL BE CHANGED TO MATCH ADJOINING PAVEMENT.

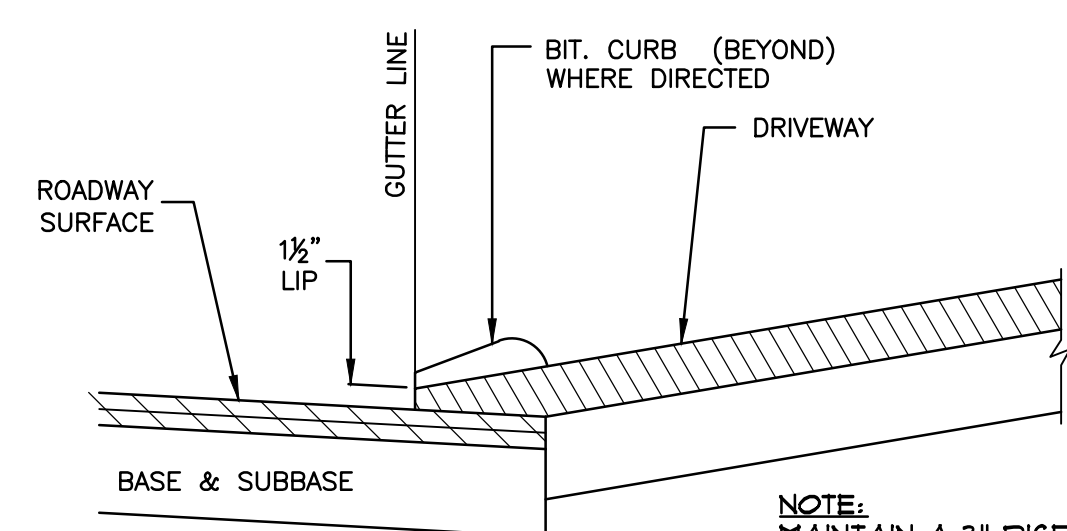


DOUBLE CATCH BASIN - TYPE "C"
NOT TO SCALE

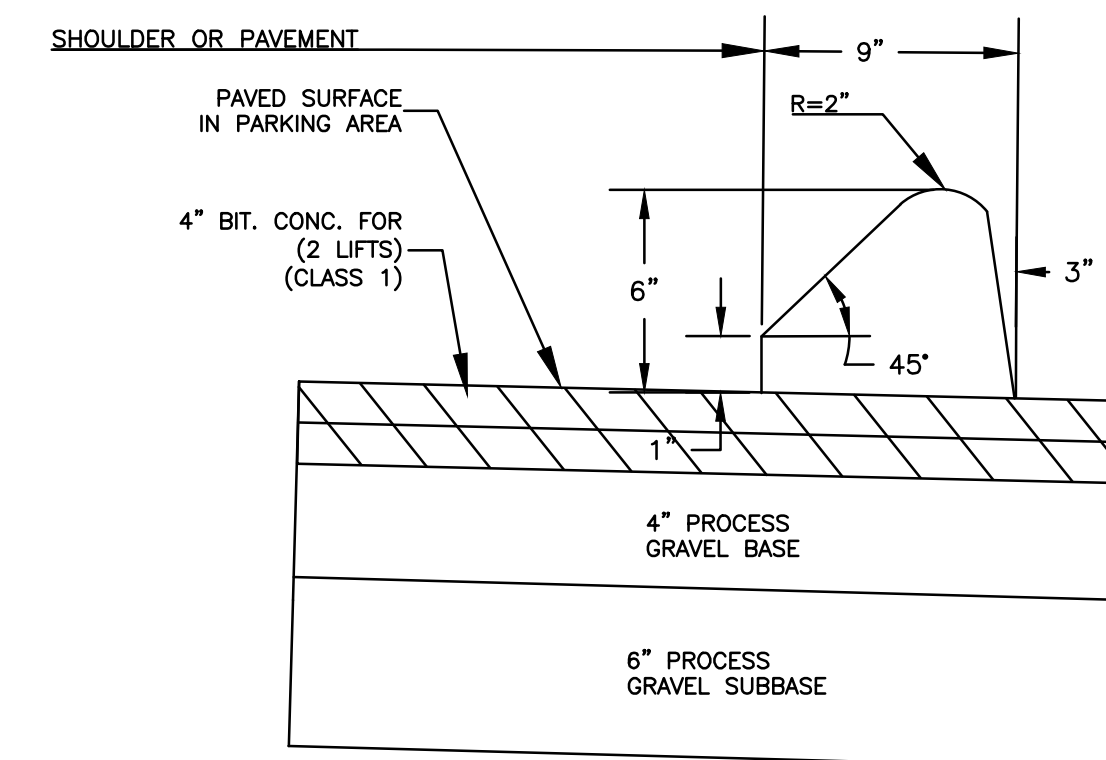


**CONCRETE SIDEWALK WITH CURBING DETAIL
(SINGLE POUR)**
NOT TO SCALE

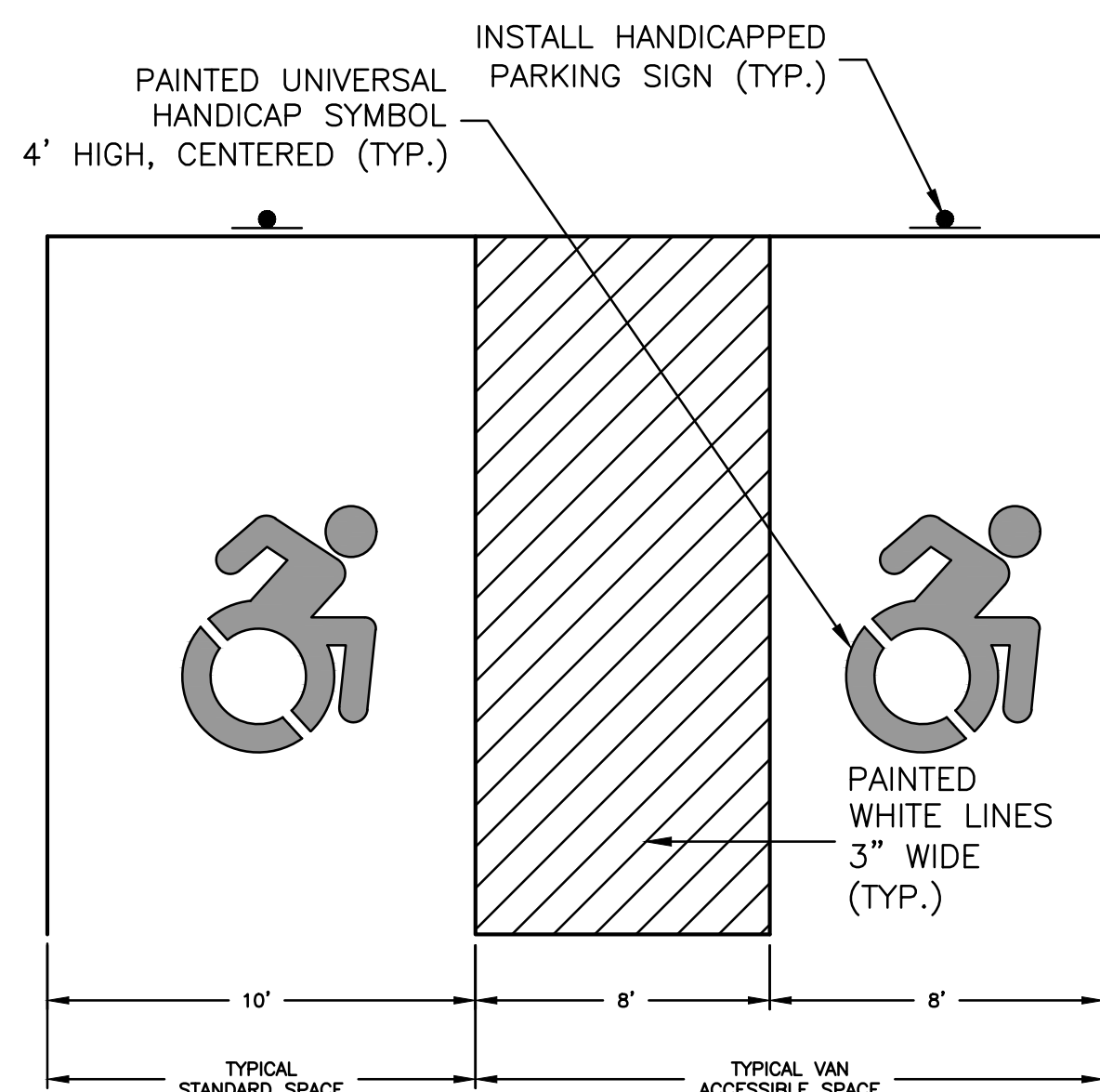
NOTES:
1. MAXIMUM SPACING OF JOINTS 15 FT
JOINT SHALL CONSIST OF BITUMINOUS
FILLER APPROVED BY THE ENGINEER.
2. CONCRETE MIX TO BE 4,000 PSI
CLASS F CONCRETE MIX.



BITUMINOUS CONCRETE DRIVES
NOT TO SCALE

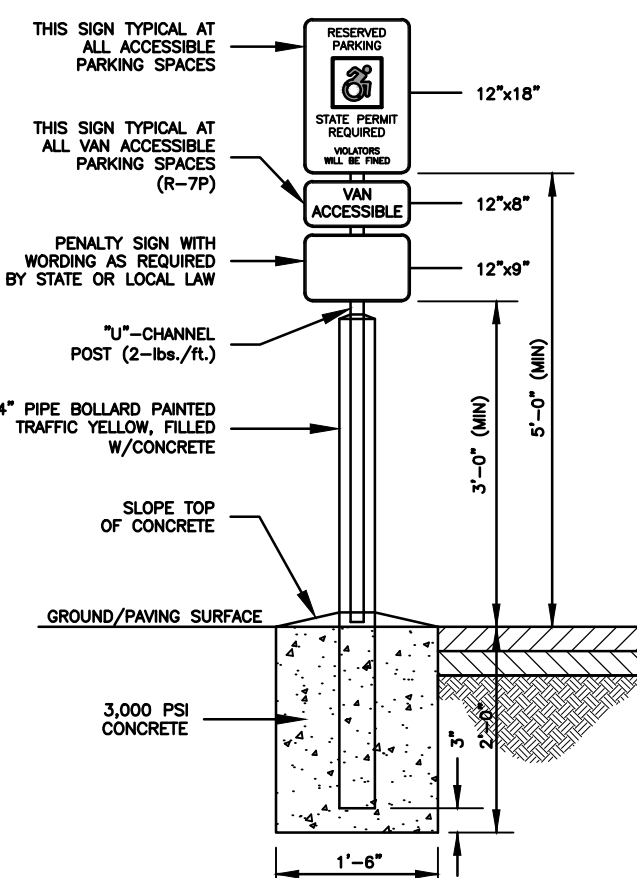


**BITUMINOUS CONCRETE PAVEMENT
& LIP CURBING**
NOT TO SCALE

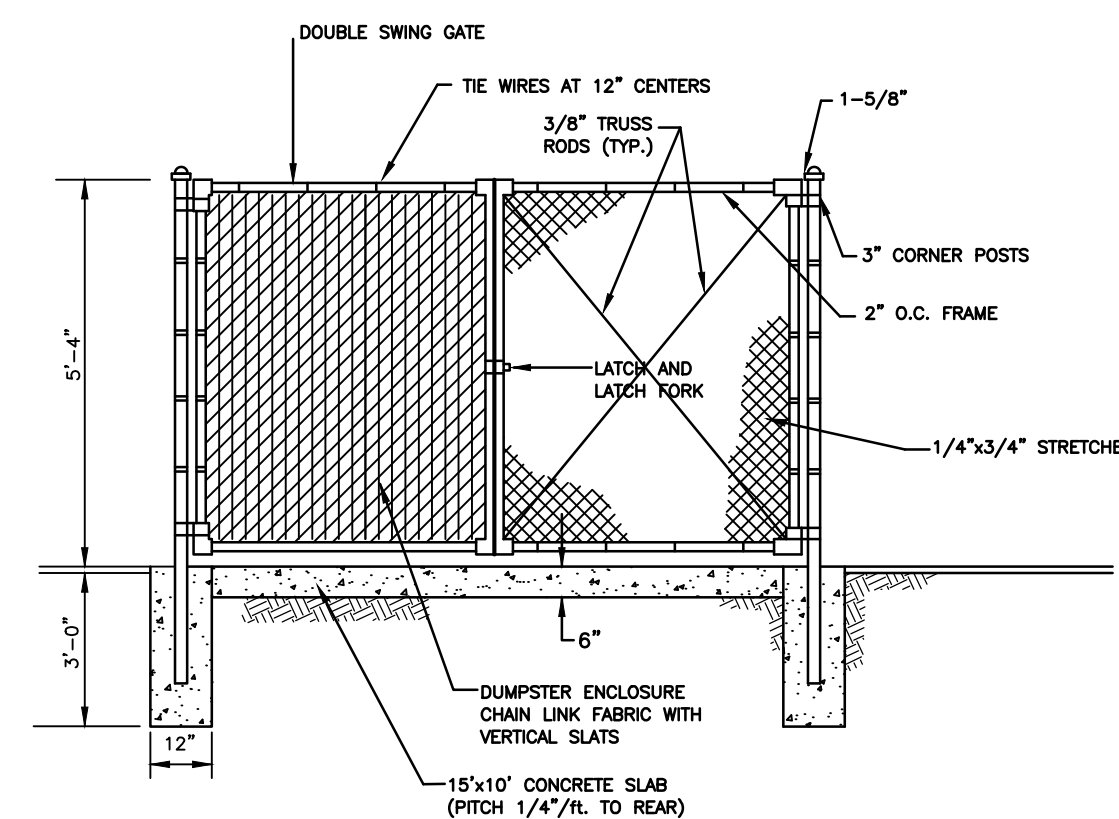


NOTE:
ALL ADA ACCESSIBLE SIGNING, DIMENSIONS AND SPACE MARKINGS SHALL BE IN
ACCORDANCE WITH CGS 14-253g(h) AND THE 2018 PORTION OF THE STATE
BUILDING CODE

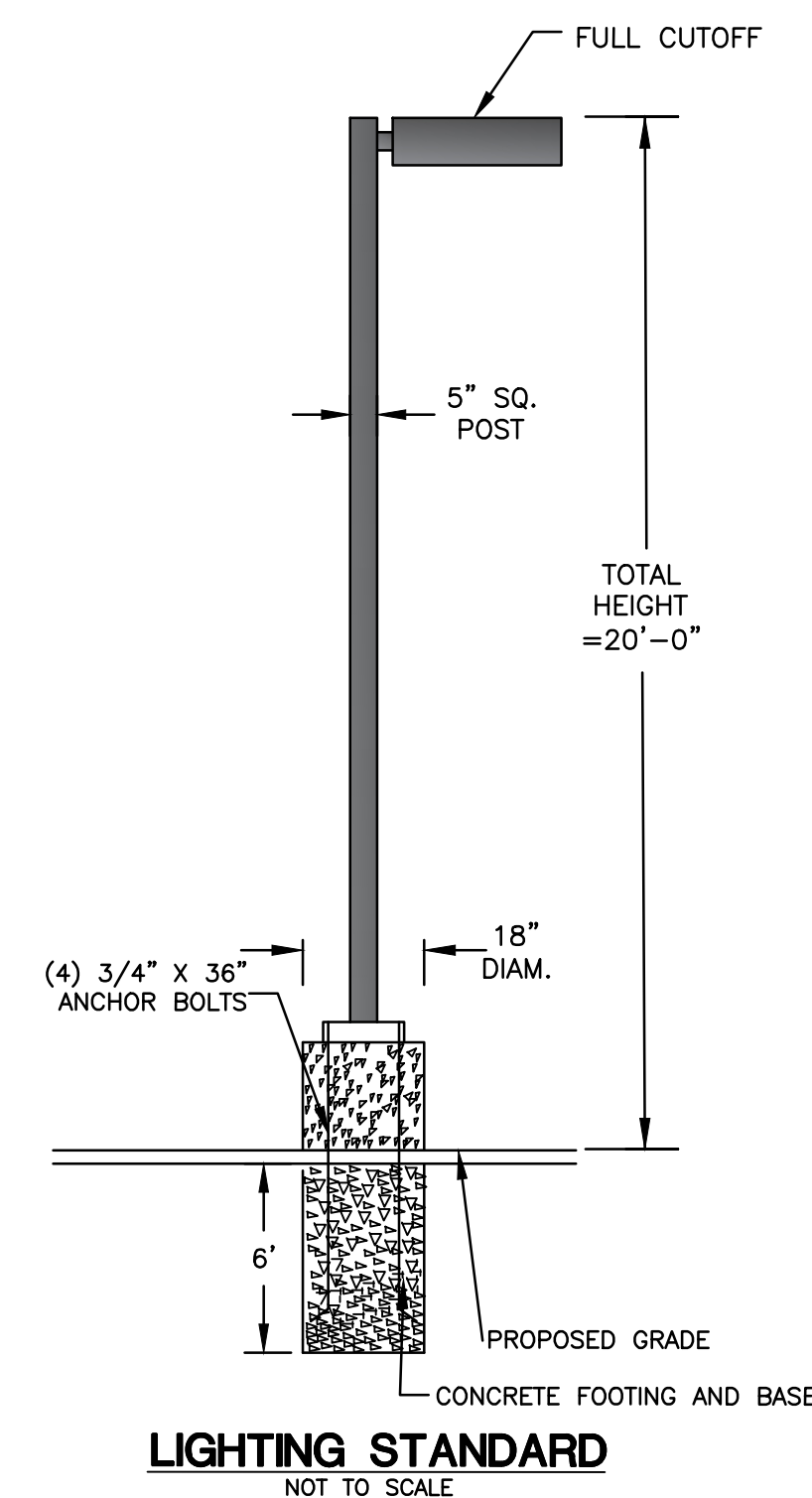
**ADA ACCESSIBLE PARKING
SPACE DETAIL**
NOT TO SCALE



**ADA ACCESSIBLE
PARKING SIGN DETAIL**
NOT TO SCALE



CHAIN LINK FENCE/DUMPSTER ENCLOSURE
NOT TO SCALE



LIGHTING STANDARD
NOT TO SCALE

			Project No. GSD-72
317 Main Street Norwich, CT 06360 (860) 886-1966 Fax (860) 886-9165			Proj. Engineer E.M.B.
UNCASVILLE PROPERTY, L.L.C.			Date: NOV. 2024
2227 ROUTE 32 UNCASVILLE, CT			Sheet No. 6
SITE DETAILS			

Y:\PROJECTS\17-2227 Route 30\GSD-72 - 2227 Route 30 Conceptual Plan v8.dwg, 09/20/2025 11:34:34 AM, DWG To PDF.pc3

EROSION CONTROL & SEDIMENTATION NARRATIVE

- PRIOR TO THE INSTALLATION OF ANY EROSION AND SEDIMENT CONTROL MEASURES, THE OWNER AND CONTRACTOR SHALL MEET WITH THE TOWN OF MONTVILLE ZONING & WETLANDS OFFICER.
- THE EROSION AND SEDIMENT CONTROL MEASURES SHALL BE INSTALLED PRIOR TO SITE DISTURBANCE. ADDITIONAL EROSION & SEDIMENT CONTROL MEASURES SHALL BE INSTALLED IF DETERMINED TO BE NECESSARY BY THE ZONING & WETLANDS OFFICER.
- THE CONTRACTOR SHALL CONTACT THE ZONING & WETLANDS OFFICER FOR INSPECTION OF THE SEDIMENT AND EROSION CONTROL MEASURES, PRIOR TO SITE DISTURBANCE. CONSTRUCTION SHALL NOT BEGIN UNTIL SUCH TIME AS THE ZONING & WETLANDS OFFICER HAS REVIEWED AND APPROVED THE INSTALLATION OF THE SEDIMENTATION AND EROSION CONTROL MEASURES.
- CONTRACTOR TO INSPECT ALL EROSION AND SEDIMENT CONTROL MEASURES AT LEAST WEEKLY AND AFTER EVERY STORM EVENT AND REPAIR AND MAINTAIN AS NECESSARY.
- CONSTRUCT TEMPORARY SEDIMENT BASINS. THE TEMPORARY SEDIMENT TRAP LOCATED ON THE WESTERLY SIDE OF THE PROPERTY SHALL BE EXCAVATED DOWN TO ELEVATION 232 FOR THE CONSTRUCTION PHASE. ONCE THE SITE IS STABILIZED, THEN THE PERMANENT WATER QUALITY BASIN SHALL BE EXCAVATED DOWN TO ELEVATION 228.
- CLEARING AND GRUBBING OF THE AREA TO BE GRADED, TOPSOIL TO BE REMOVED AND STOCKPILED IN AN AREA AS SHOWN ON THE PLANS.
- STAKED HAY BALE SILT BARRIERS OR SILT FENCE SHALL BE INSTALLED AROUND ANY TEMPORARY STOCKPILE AREAS.
- SIDE SLOPES SHALL BE GRADED TO ROUGH GRADE AS SHOWN ON THE PLANS.
- TOPSOIL SHALL BE RE-APPLIED TO PROVIDE A MINIMUM DEPTH OF FOUR INCHES.
- ALL DISTURBED AREAS SHALL BE SEEDED AND MULCHED. ALL EROSION AND SEDIMENTATION CONTROL MEASURES SHALL REMAIN IN PLACE UNTIL VEGETATION IS RE-ESTABLISHED. APPROXIMATELY 4.08 ACRES WILL BE DISTURBED DURING DEVELOPMENT.
- SEEDING SHOULD TAKE PLACE BETWEEN APRIL 1 AND JUNE 1 OR AUGUST 15 AND OCTOBER 1.
- THE FOLLOWING SEEDING MIXTURES SHALL BE PROVIDED ON ALL DISTURBED AREAS:

GENERAL:		STORMWATER BASIN:	
KENTUCKY BLUEGRASS	20 LBS/AC	CREeping RED FESCUE	20 LBS/AC
CREeping RED FESCUE	20 LBS/AC	REDTOP	2 LBS/AC
PERENNIAL RYEGRASS	5 LBS/AC	PERENNIAL RYEGRASS	20 LBS/AC

- UNFORESEEN PROBLEMS WHICH ARE ENCOUNTERED IN THE FIELD SHALL BE SOLVED ACCORDING TO CONNECTICUT GUIDELINES FOR SOIL EROSION AND SEDIMENT CONTROL.

BASIN TOPSOIL MIX

CONNECTICUT STORMWATER QUALITY MANUAL
THE ENGINEERED BIORETENTION SOIL MEDIA SHOULD BE A HOMOGENEOUS SOIL MIX OF (BY VOLUME):

- 60-85% SAND
- 15-25% TOPSOIL
- 3-8% ORGANIC MATTER

POLLUTION PREVENTION PLAN

1. POLLUTION PREVENTION TEAM

THE OWNERS WILL BE RESPONSIBLE FOR CARRYING OUT THE PROVISIONS OF THIS PLAN. PARKING LOTS, SIDEWALKS AND OTHER IMPERVIOUS SURFACES SHALL BE SWEEPED CLEAN OF SAND AND LITTER AND ANY OTHER POLLUTANTS AT LEAST TWICE A YEAR:

- BETWEEN NOVEMBER 15 AND DECEMBER 15 (AFTER LEAF FALL)
- DURING APRIL (AFTER SNOW MELT)

NO WASHING VEHICLES OR EQUIPMENT IN PARKING AREAS.

2. MAINTENANCE AND INSPECTION

- MONTHLY INSPECTION OF STORM WATER STRUCTURES AND OUTFALLS.
- CLEAN SEDIMENT AND DEBRIS FROM STRUCTURES AND OUTFALLS TWICE PER YEAR - IN THE FALL & SPRING.
- SUBMIT MAINTENANCE & INSPECTION REPORT TO THE PLANNING DEPARTMENT

3. STORMWATER BASIN

- CLEAN SEDIMENT AND DEBRIS FROM BASIN TWICE A YEAR, DURING APRIL AND OCTOBER.

4. SPILL OR ACCIDENTAL DISCHARGE

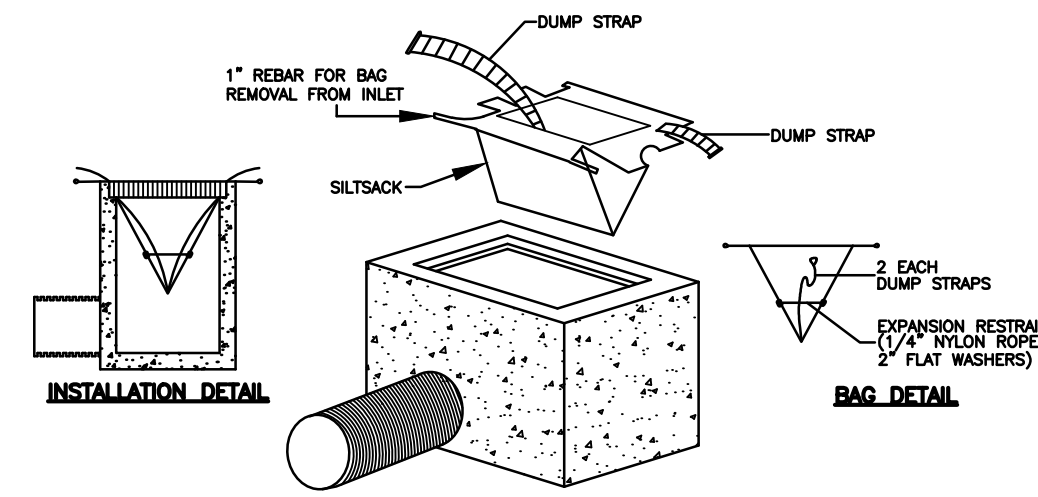
COMPLY WITH STATE AND FEDERAL REGULATIONS TO CONTAIN AND CLEAN UP ANY SPILL OR DISCHARGE AND DISPOSE OF MATERIALS AT AN APPROVED FACILITY. CONTACT CONNECTICUT DEP OIL AND CHEMICAL SPILL RESPONSE DIVISION (860) 424-3338 AND THE MONTVILLE FIRST SELECTMAN. IN THE EVENT A SPILL OCCURS, THE FOLLOWING STEPS SHOULD BE PERFORMED AS SOON AS POSSIBLE:

- STOP THE SOURCE OF THE SPILL
- CONTAIN THE SPILL
- COVER SPILL WITH ABSORBENT MATERIAL SUCH AS KITTY LITER, SAWDUST OR OIL ABSORBENT PADS. DO NOT USE STRAW.
- DISPOSE OF ABSORBER IN ACCORDANCE WITH LOCAL AND STATE REGULATIONS.

- BEST MANAGEMENT PRACTICES FOR FUTURE UPKEEP OF THE SITE WILL INCLUDE NON-CHEMICAL LAWN CARE & MINIMAL USE OF FERTILIZERS, DE-ICING OR WINTER OPERATIONS WITHOUT THE USE OF CALCIUM, AND NO EXTERIOR WASHING OF VEHICLES OR DISCHARGING OF INTERIOR WASH WATER.

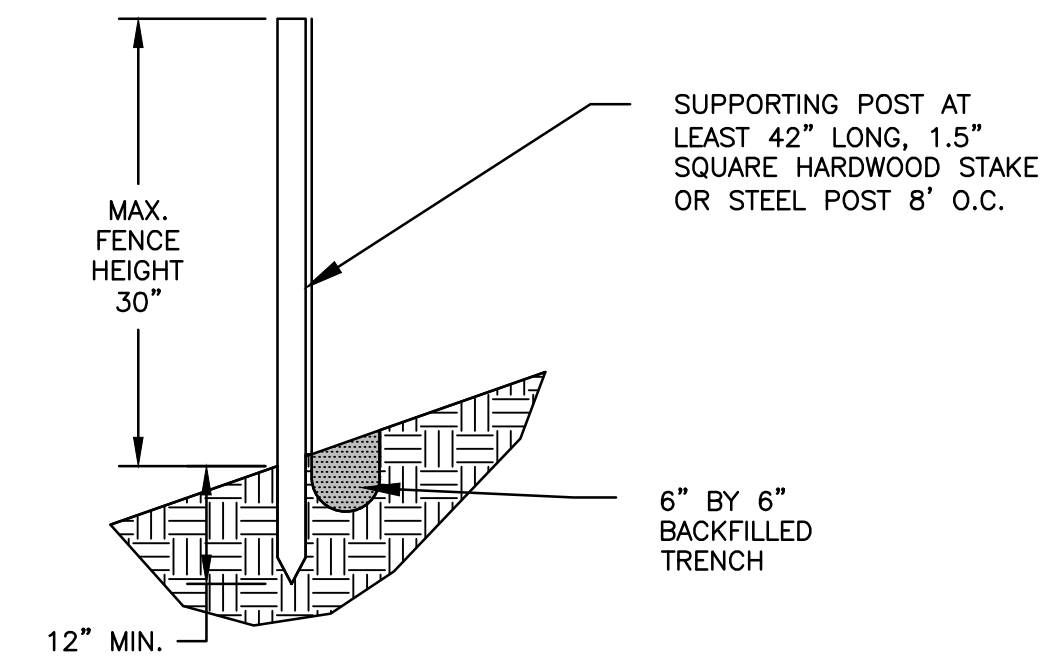
OPERATION AND MAINTENANCE OF DRAINAGE SYSTEM

- THE PROPERTY OWNER IS RESPONSIBLE FOR THE OPERATION AND MAINTENANCE OF THE DRAINAGE SYSTEM. THE OWNER IS: 393 BUTLERTOWN ROAD LLC, 305 BUTLERTOWN ROAD OAKDALE CT 06370, 860-235-2846 CELL
- ALL CATCH BASINS, STORMWATER BASIN, AND RIPRAP SPLASH PADS SHALL BE INSPECTED AND CLEANED OUT TWICE A YEAR, IN THE FALL AFTER THE LEAVES HAVE FALLEN AND IN THE SPRING; AND ALL SEDIMENTS ARE TO BE REMOVED AND INSPECTED FOR MAINTENANCE AND MAINTAINED IF NEEDED.
- THE STORMWATER POND SHALL BE MOWED ONCE A YEAR (BOTTOMS & SIDES). SLOPES AT 3:1 CAN BE MOWED OR CUT WITH A WEED WACKER.

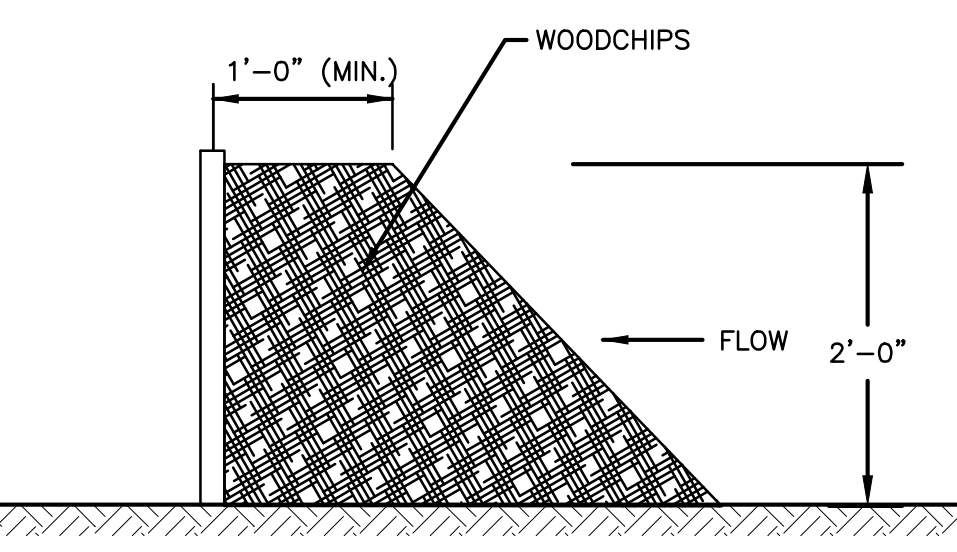
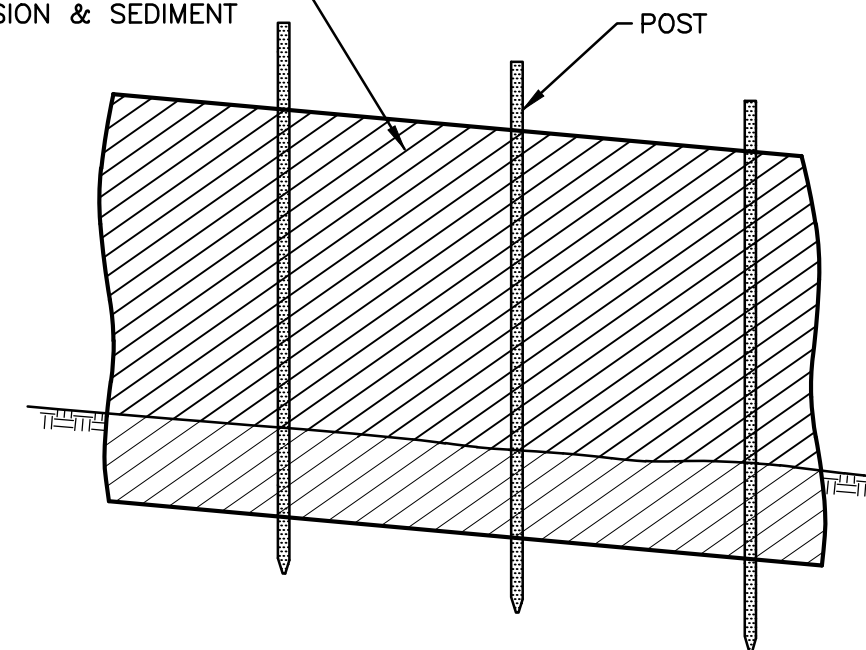


INLET SEDIMENT CONTROL DEVICE DETAIL

NOT TO SCALE

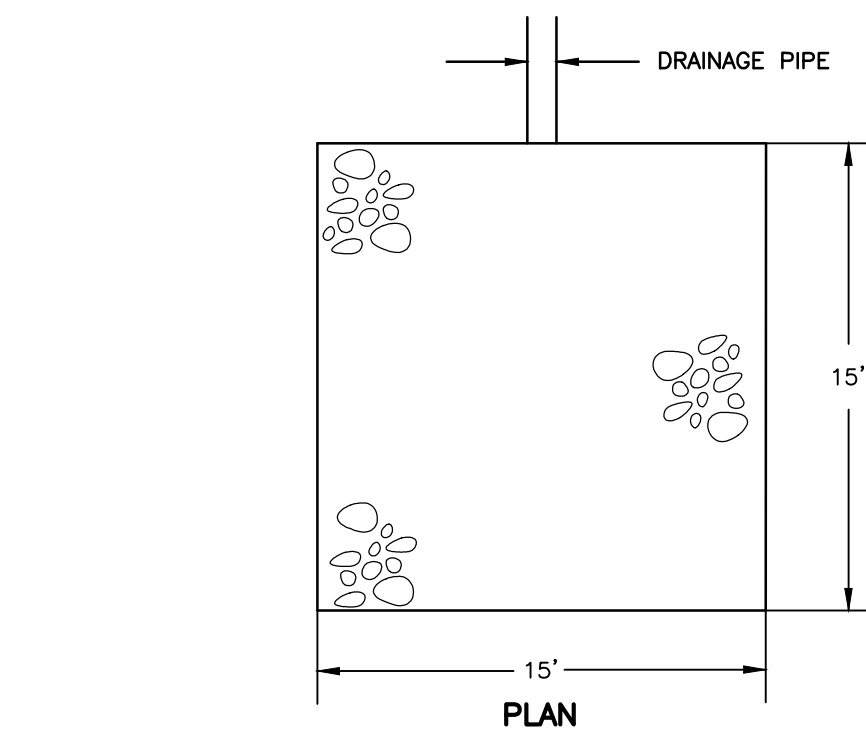


GEOTEXTILE FABRIC CONFORMING TO TABLE 5.37 OF THE CT GUIDELINES FOR SOIL EROSION & SEDIMENT CONTROL

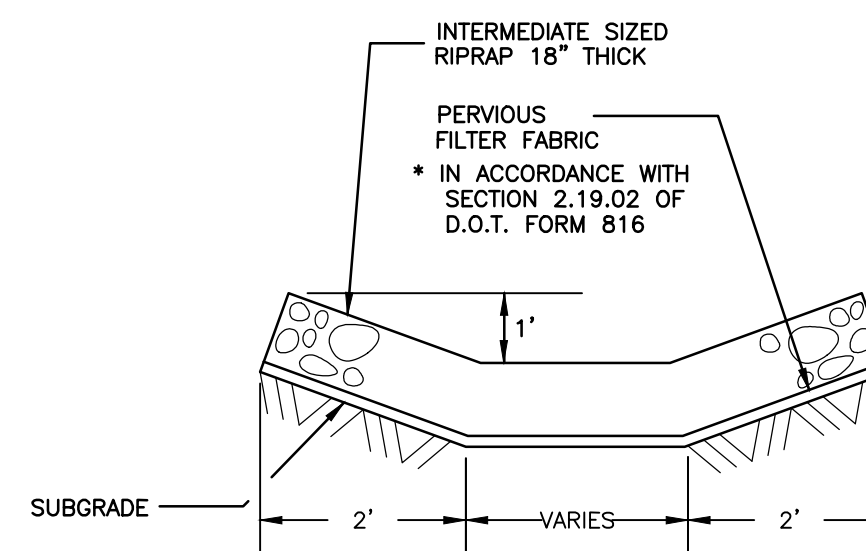


WOODCHIP BERM WITH SILT FENCE

NOT TO SCALE

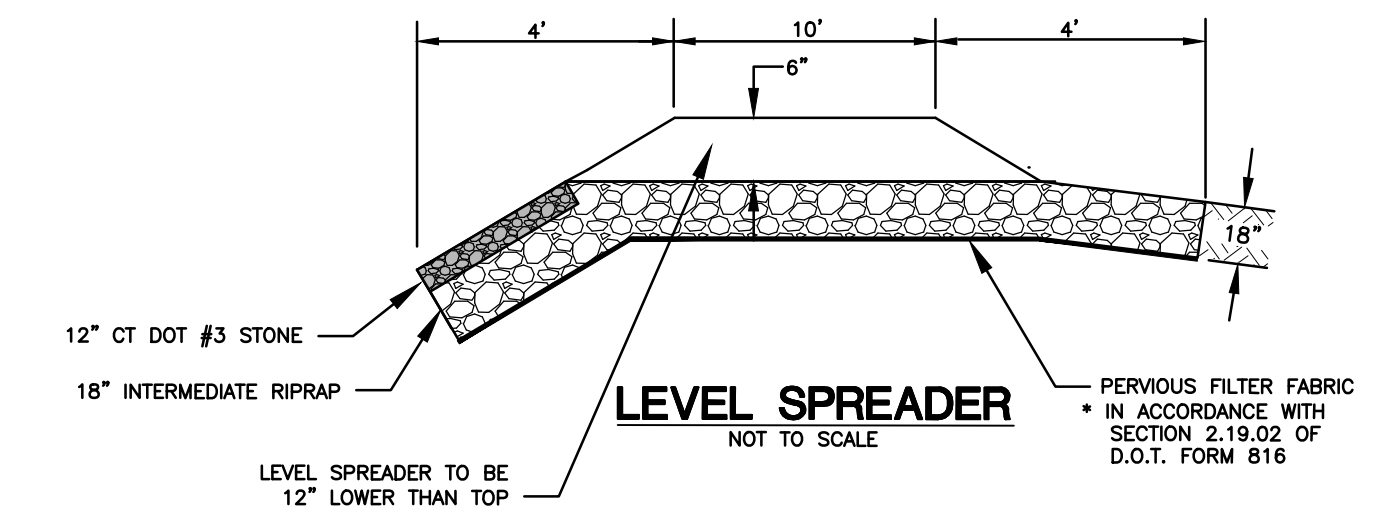


PLAN



**SECTION
MODIFIED RIP-RAP
SPLASH PAD DETAIL**

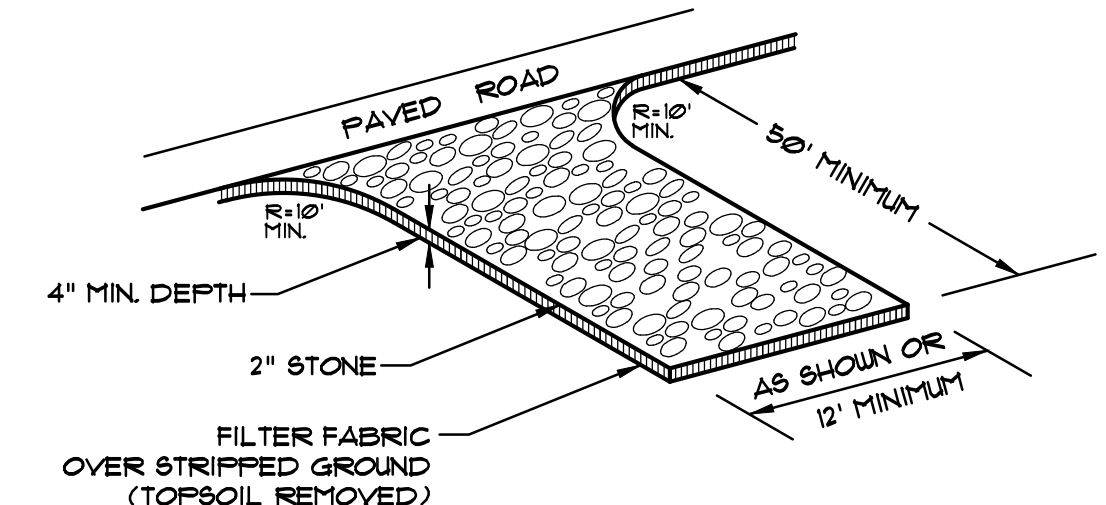
NOT TO SCALE



LEVEL SPREADER

NOT TO SCALE


LEVEL SPREADER TO BE 12" LOWER THAN TOP OF BASIN BERM
* IN ACCORDANCE WITH SECTION 2.19.02 OF D.O.T. FORM 816



CONSTRUCTION ENTRANCE

NOT TO SCALE

No.	DATE	REVISION

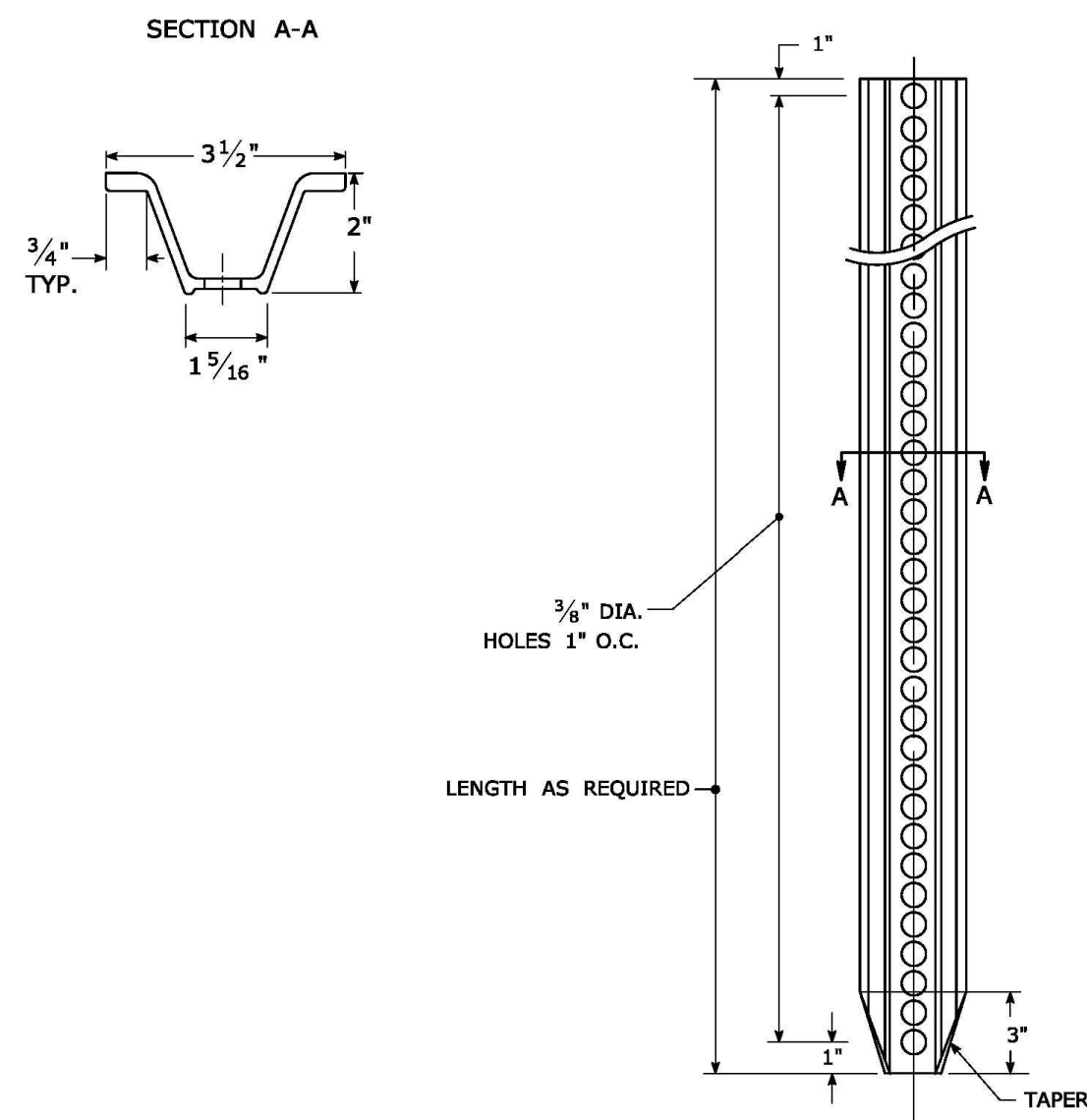


Green Site Design LLC
CONSULTING CIVIL ENGINEERS

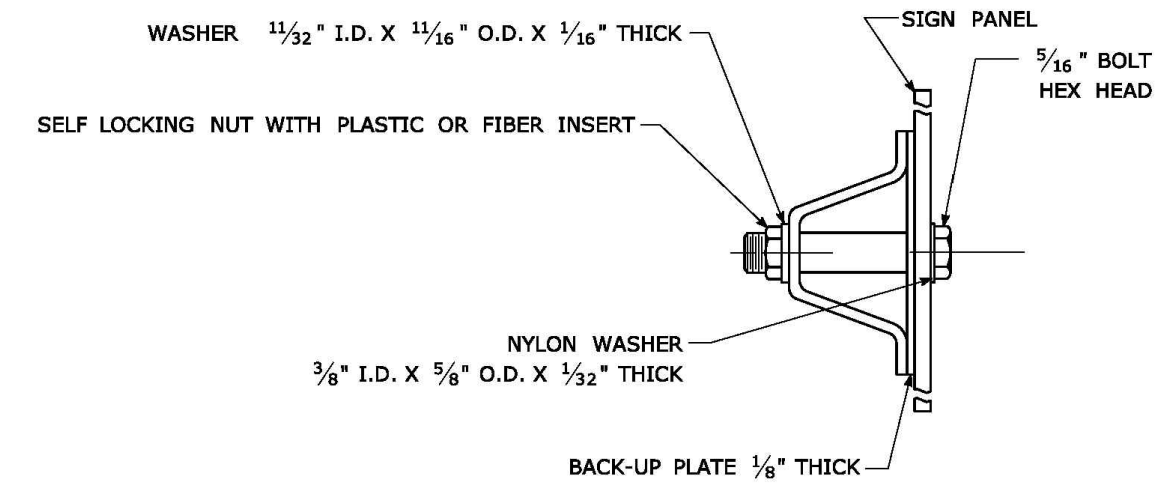
317 Main Street Norwich, CT 06360
(860) 886-1966 Fax (860) 886-9165

UNCASVILLE PROPERTY, L.L.C.		Project No. GSD-72
2227 ROUTE 32 UNCASVILLE, CT		Proj. Engineer E.M.B.
E&S DETAILS		Date: NOV. 2024
7		Sheet No.

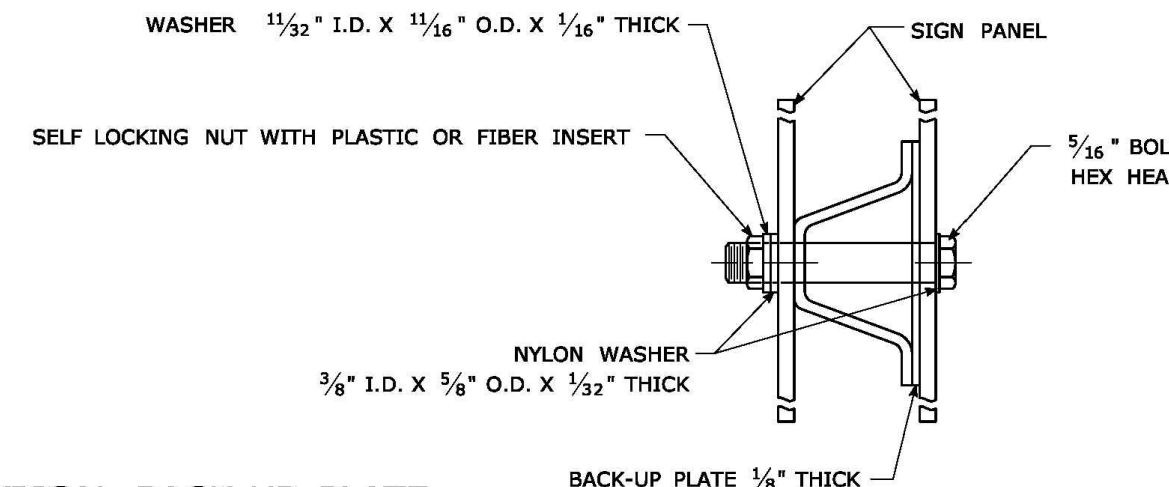
TYPICAL METAL SIGN POSTS



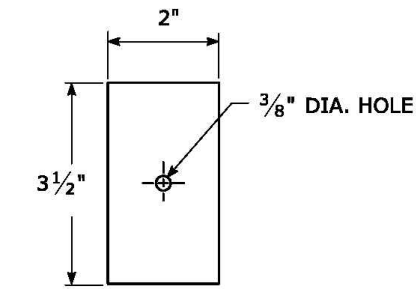
TYPICAL SIGN PANEL ATTACHMENT



TYPICAL BACK TO BACK SIGN PANEL ATTACHMENT



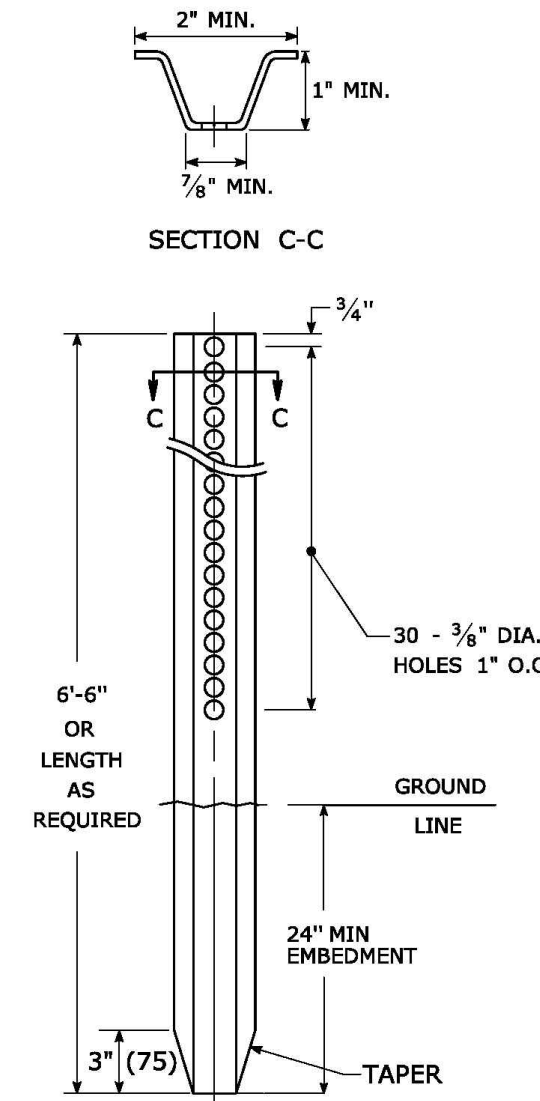
TYPICAL BACK-UP PLATE



BOLTS - STAINLESS STEEL CONFORMING TO ASTM F593, ALLOY GROUP 1 OR 2 (ALLOY TYPES 304 OR 316).
 SELF LOCKING NUTS - STAINLESS STEEL CONFORMING TO ASTM F594, ALLOY GROUP 1 OR 2 (ALLOY TYPES 304 OR 316).
 WASHERS - STAINLESS STEEL CONFORMING TO ASTM A240, (ALLOY TYPES 304 OR 316).

METAL DELINEATOR POST

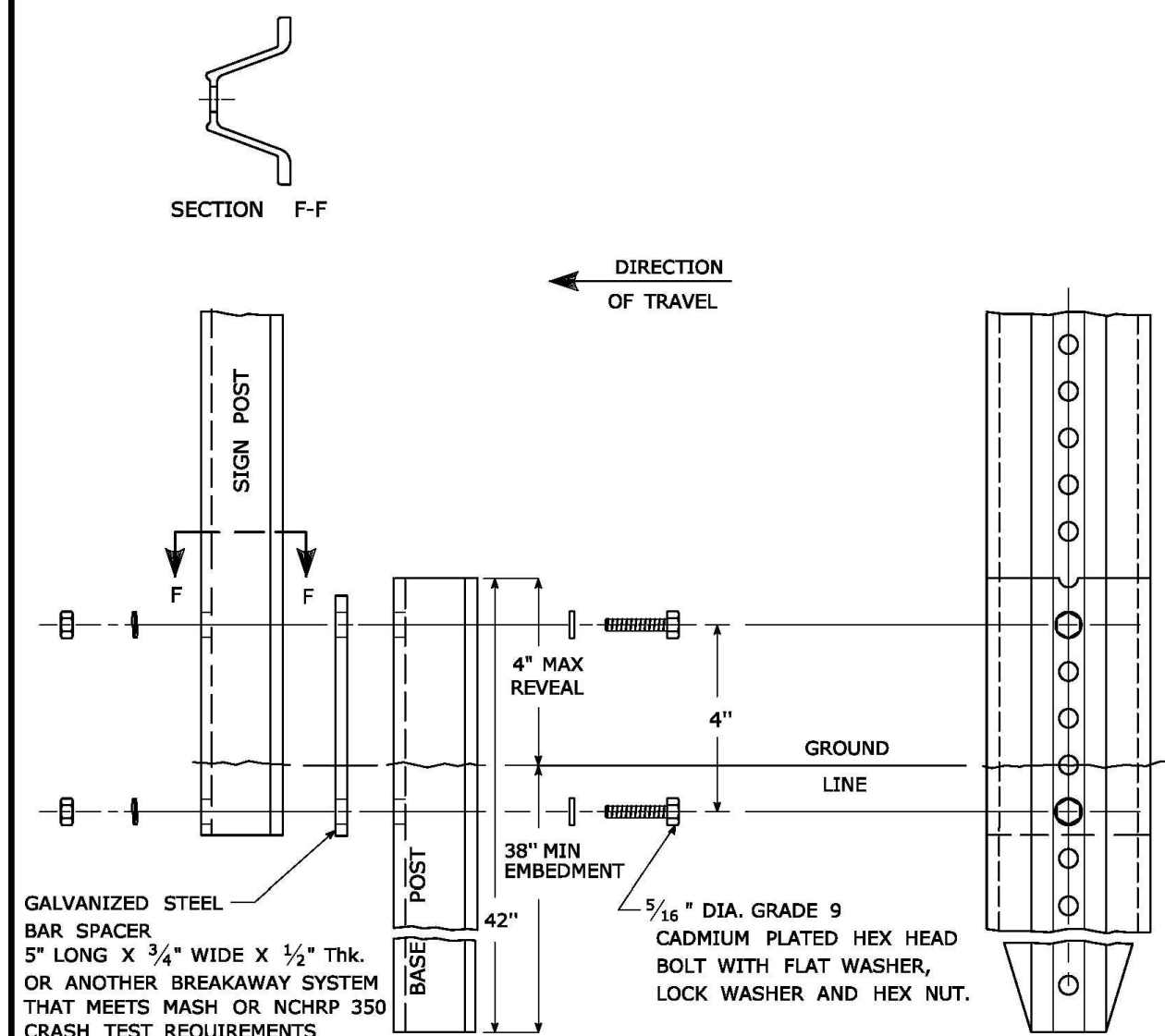
WT./FT. = 1.12 LBS./FT. MIN.



GENERAL NOTES:

- STEEL FOR DELINEATOR POSTS SHALL BE ASTM A36 STEEL. STEEL FOR ALL OTHER POSTS SHALL CONFORM TO THE MECHANICAL REQUIREMENTS OF ASTM A 499 GRADE 80 AND TO THE CHEMICAL REQUIREMENTS OF ASTM A1 CARBON STEEL TEE RAIL HAVING NOMINAL WEIGHT (MASS) OF 91 LBS. OR GREATER PER LINEAR YARD.
- AFTER FABRICATION, ALL STEEL POSTS, STRAPS AND PLATES SHALL BE GALVANIZED TO MEET THE REQUIREMENTS OF ASTM A123.
- WASHERS FOR BREAKAWAY INSTALLATIONS SHALL MEET ASTM F436, TYPE 1.
- SPACER BAR FOR BREAKAWAY INSTALLATION SHALL CONFORM TO THE MECHANICAL REQUIREMENTS OF ASTM A36.
- ALL BOLTS, NUTS, AND WASHERS FOR BREAKAWAY INSTALLATIONS SHALL BE GALVANIZED TO MEET THE REQUIREMENTS OF ASTM A153.
- ALL SIGN POSTS SHALL HAVE BREAKAWAY FEATURES THAT MEET AASHTO REQUIREMENTS CONTAINED IN THE CURRENT "STANDARD SPECIFICATIONS FOR STRUCTURAL SUPPORTS FOR HIGHWAY SIGNS, LUMINAIRES AND TRAFFIC SIGNALS." THE BREAKAWAY FEATURES SHALL BE STRUCTURALLY ADEQUATE TO CARRY THE SIGNS SHOWN IN THE PLANS AT 60 MPH WIND LOADINGS. INSTALLATIONS SHALL BE IN ACCORDANCE WITH MANUFACTURERS RECOMMENDATIONS.
- SIGN POSTS SHALL BE 4 LBS./FT.

BREAKAWAY INSTALLATION FOR 4 LBS./FT. POSTS

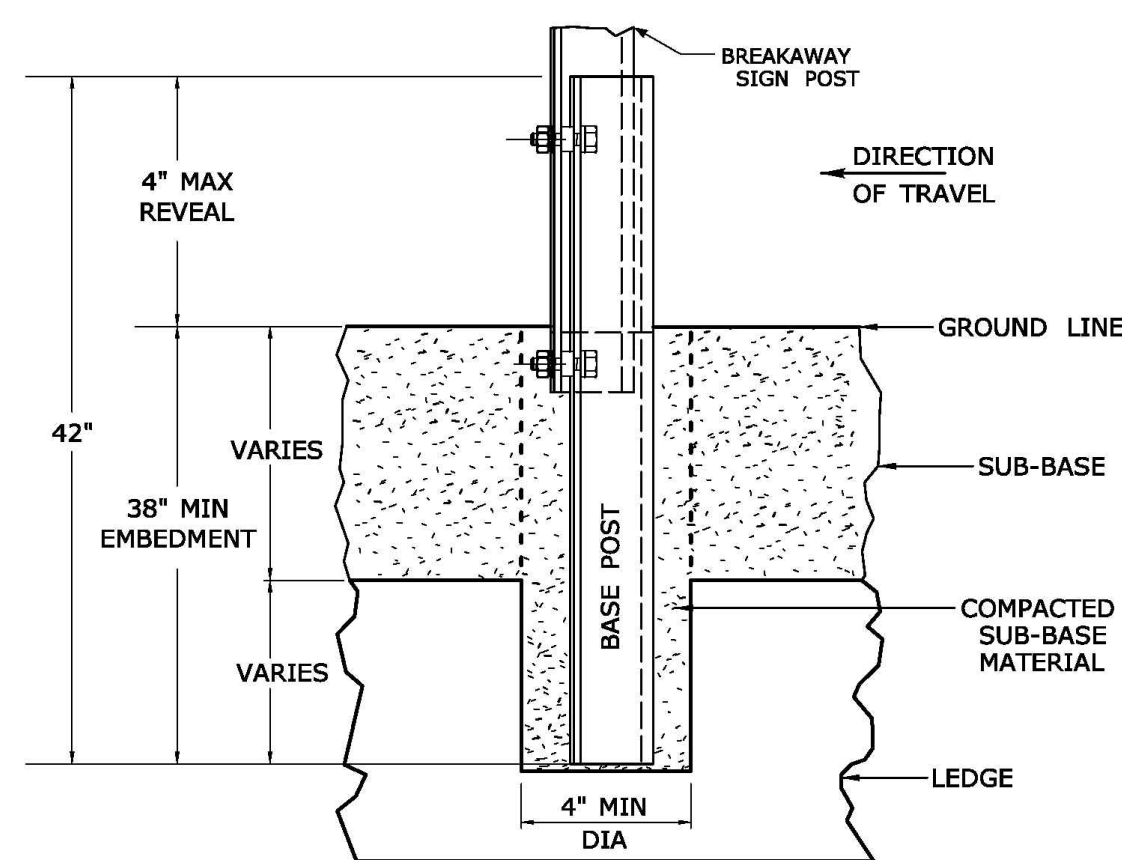


GALVANIZED STEEL BAR SPACER 5" LONG X 3/4" WIDE X 1/2" THK. OR ANOTHER BREAKAWAY SYSTEM THAT MEETS MASH OR NCHRP 350 CRASH TEST REQUIREMENTS FOR 4 LB/FT. POSTS

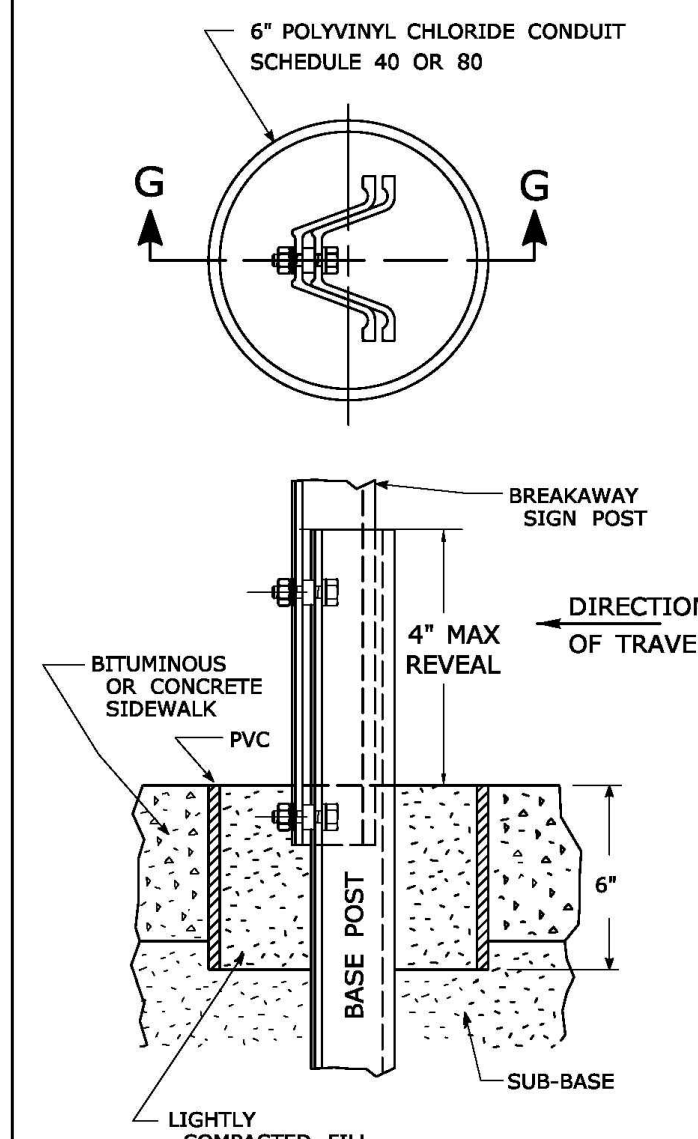
3/16" DIA. GRADE 9 CADMIUM PLATED HEX HEAD BOLT WITH FLAT WASHER, LOCK WASHER AND HEX NUT.

TYPICAL SIGN POST INSTALLATION IN LEDGE

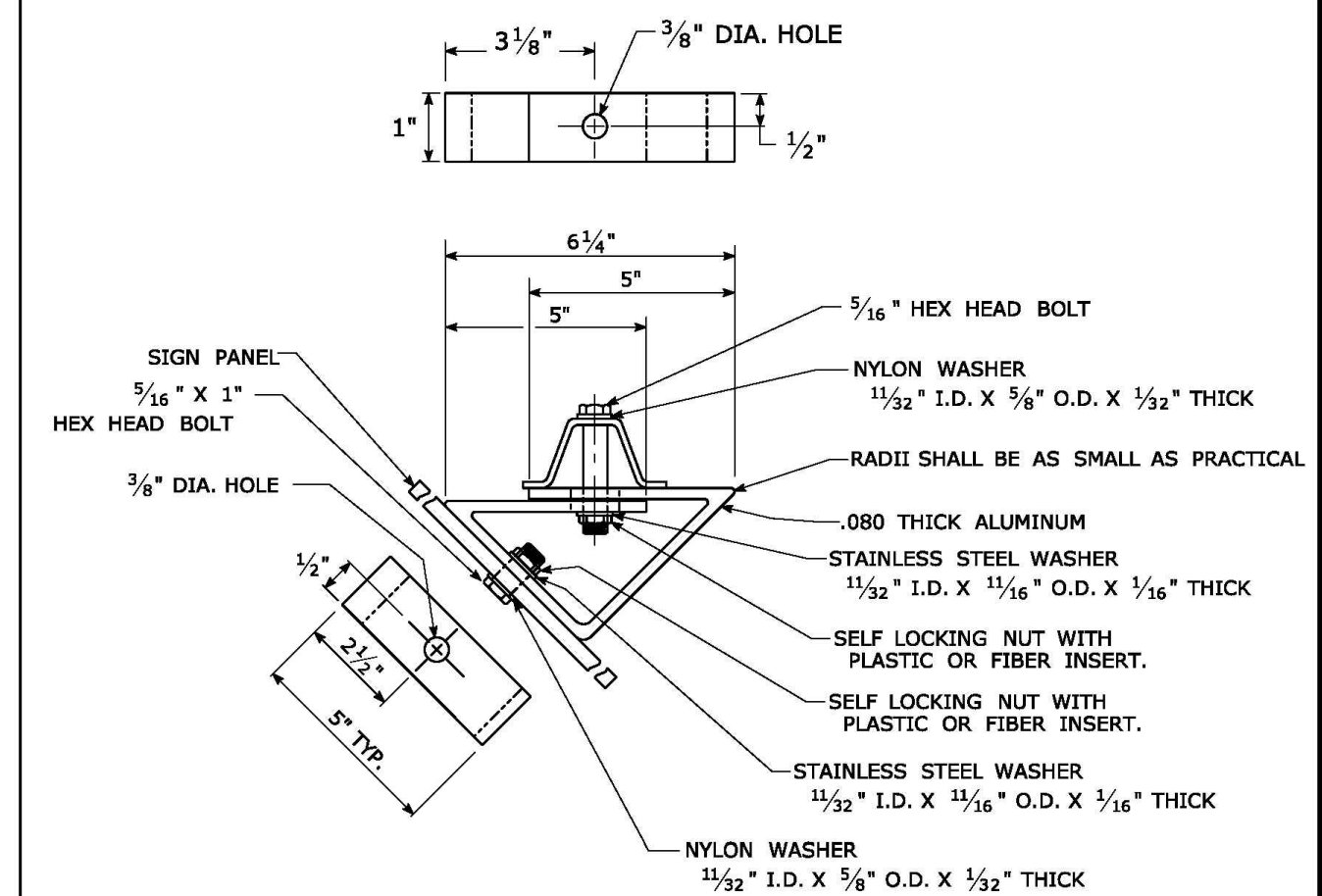
LEDGE SHALL BE REMOVED TO DRIVE THE BASE POST TO A DEPTH OF 38". HOLE SHALL BE FILLED WITH SUB-BASE MATERIAL AND COMPACTED WITH A TAMPING BAR, OR TECHNIQUE APPROVED BY THE ENGINEER, PRIOR TO BASE POST INSTALLATION.



TYPICAL SLEEVE FOR PAVED AREAS



45° MOUNTING BRACKET FOR INSTALLATION OF PARKING SIGNS



REV.	DATE	REVISION DESCRIPTION
2	6-2017	SIGN POST REVISIONS.
1	2-2011	MINOR REVISIONS.

THE INFORMATION, INCLUDING ESTIMATED QUANTITIES OF WORK, SHOWN ON THESE SHEETS IS BASED ON LIMITED INVESTIGATIONS BY THE STATE AND IS IN NO WAY WARRANTED TO INDICATE THE CONDITIONS OF ACTUAL QUANTITIES OF WORK WHICH WILL BE REQUIRED.
 Plotted Date: 6/6/2017

NOT TO SCALE



STATE OF CONNECTICUT DEPARTMENT OF TRANSPORTATION

SUBMITTED BY: Mark F. Marush, P.E. 2017.06.07 07:30:30-0400
 APPROVED BY: Gregory M. Dorosh, P.E. 2017.06.13 15:28:14-0400

CTDOT STANDARD SHEET OFFICE OF ENGINEERING

STANDARD SHEET TITLE: METAL SIGN POSTS AND SIGN MOUNTING DETAILS
 GUIDE SHEET NO.: TR-1208_02

Green Site Design LLC
 CONSULTING CIVIL ENGINEERS
 317 Main Street Norwich, CT 06360
 (860) 886-1966 Fax (860) 886-9165

No.	DATE	REVISION

UNCASVILLE PROPERTY, L.L.C.
2227 ROUTE 32
UNCASVILLE, CT
 CT DOT DETAILS

Project No. GSD-77
 Proj. Engineer E.M.B.
 Date: 6/26/25
 Sheet No. **8**