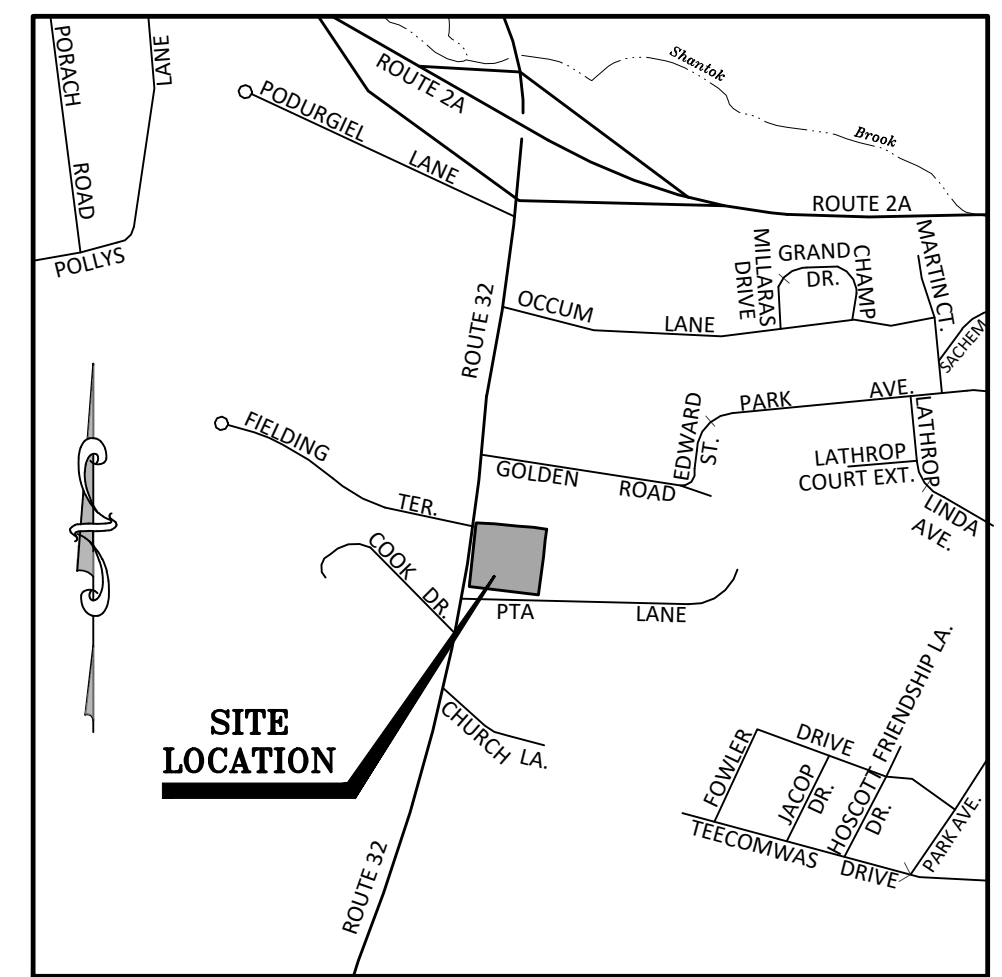
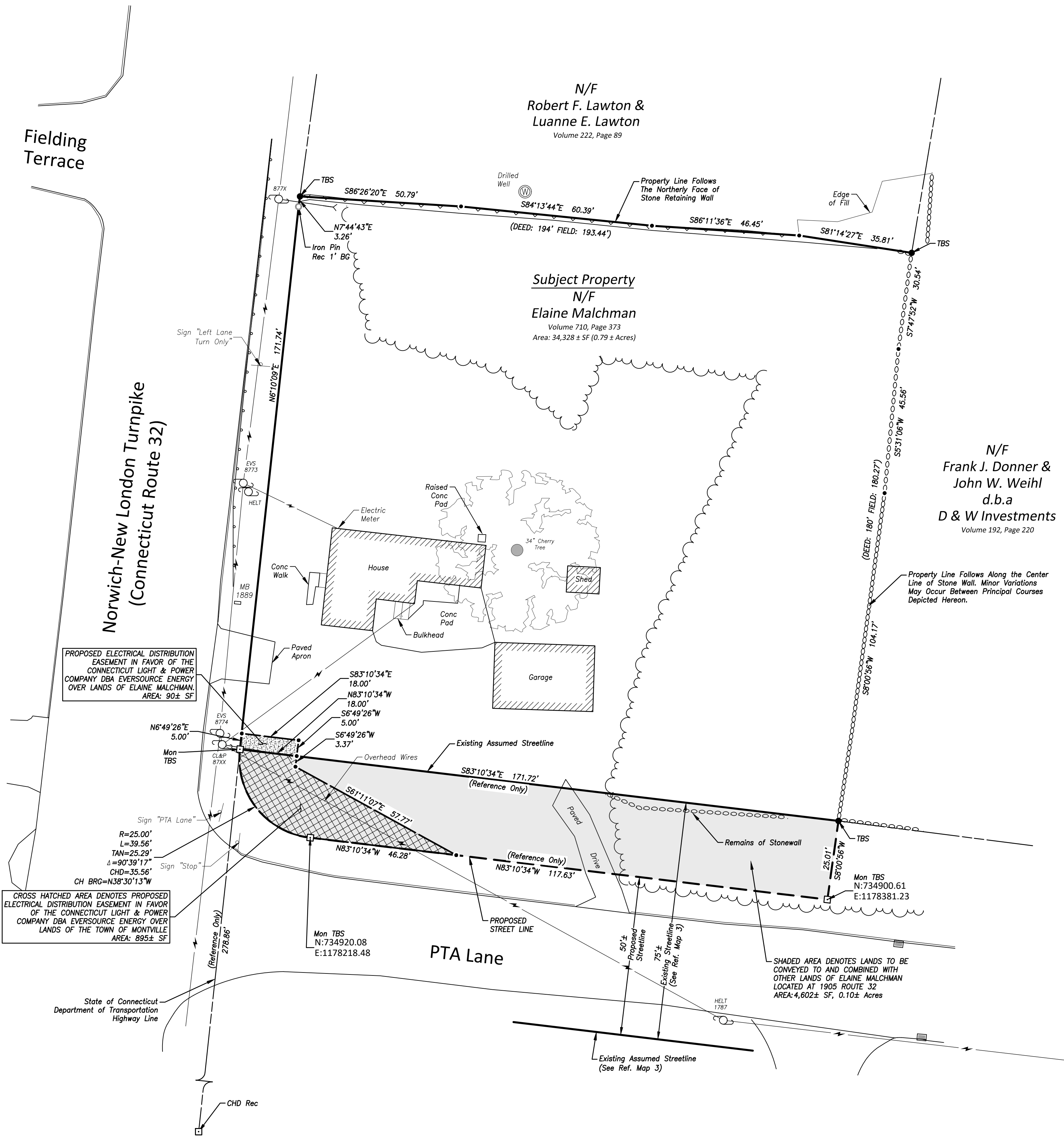


LEGEND & ABBREVIATIONS

±	MORE OR LESS	— 254	EXISTING CONTOUR
TYP	TYPICAL		TREE LINE
SF	SQUARE FEET		RETAINING WALL
SMH	SANITARY MANHOLE		STONE WALL
CB	CATCH BASIN		OVERHEAD WIRES
TF	TOP OF FRAME		SANITARY SEWER
TBS	TO BE SET		WATER
INV	INVERT	●	ANGLE POINT
MB	MAILBOX	○	IRON PIN
W/	WITH	⊙	DRILL HOLE
W/F	WOOD FRAME	□	MONUMENT
CONC	CONCRETE		UTILITY POLE
CHD	CONNECTICUT HIGHWAY DEPARTMENT		GUY WIRE
MON	MONUMENT		CATCH BASIN
REC	RECOVERED		SANITARY MANHOLE
EVS	EVERSOURCE		SIGN
CL&P	CONNECTICUT LIGHT AND POWER		WELL
N/F	NOW OR FORMERLY	□	CONCRETE MONUMENT TBS
BG	BELOW GRADE		



LOCATION MAP
SCALE: 1"=1000'

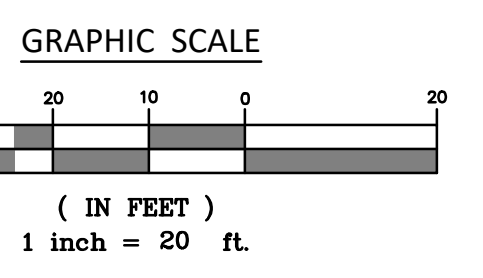


SURVEY NOTES

- THIS SURVEY HAS BEEN PREPARED PURSUANT TO THE REGULATIONS OF CONNECTICUT STATE AGENCIES SECTIONS 20-300B-1 THROUGH 20-300B-20 AND THE "STANDARDS AND SUGGESTED METHODS AND PROCEDURES FOR SURVEYS AND MAPS IN THE STATE OF CONNECTICUT" AS ADOPTED FOR USE BY THE CONNECTICUT ASSOCIATION OF LAND SURVEYORS, INC. ON AUGUST 29, 2019. IT IS AN EASEMENT MAP AND CONFORMS TO HORIZONTAL CLASS A-2 AND VERTICAL CLASS V-2. IT IS INTENDED TO BE USED FOR EASEMENT DELINEATION.
- NORTH ORIENTATION DEPICTED HEREON IS APPROXIMATE NORTH AMERICAN DATUM 1983 (NAD83) BASED UPON GLOBAL POSITIONING SYSTEM OBSERVATIONS, OBSERVED ON JANUARY 31, 2025 PER REFERENCE MAP 4.
- VERTICAL DATUM DEPICTED HEREON IS APPROXIMATE NORTH AMERICAN VERTICAL DATUM 1988 (NAVOD88) BASED UPON GLOBAL POSITIONING SYSTEM OBSERVATIONS USING GEOIDE18 ON JANUARY 31, 2025 PER REFERENCE MAP 4.
- THE LOCATIONS OF UNDERGROUND UTILITIES AS SHOWN HEREON ARE BASED ON THE LOCATION OF ABOVE GROUND STRUCTURES AND RECORD DRAWINGS PROVIDED BY OTHERS. NO EXCAVATIONS WERE MADE DURING THE PROGRESS OF THIS SURVEY TO LOCATE BURIED UTILITIES/STRUCTURES. ALL SUBTERRANEAN FEATURES AND IMPROVEMENTS MAY NOT BE DEPICTED OR NOTED HEREON. THE LOCATIONS OF UNDERGROUND UTILITIES/STRUCTURES MAY VARY FROM LOCATIONS SHOWN HEREON. ADDITIONAL BURIED UTILITIES/STRUCTURES MAY BE ENCOUNTERED. CONTACT "CALL BEFORE YOU DIG" AT LEAST 72 HOURS PRIOR TO ANY EXCAVATION OPERATIONS.
- THE FIELD SURVEY WAS COMPLETED ON MARCH 10, 2025, LAND RECORD AND RELATED RESEARCH WAS COMPLETED ON JANUARY 14, 2025.
- RECORD TITLE TO THE SUBJECT PROPERTY MAY BE REFERENCED TO A WARRANTY DEED FROM LORETTA M. BARRIE TO ELAINE MALCHMAN RECORDED FEBRUARY 13, 2025 IN THE TOWN OF MONTVILLE LAND RECORDS VOLUME 710 PAGE 373.

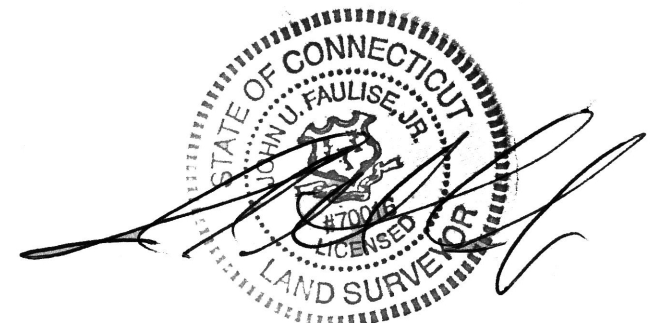
REFERENCE MAPS

- CONNECTICUT STATE HIGHWAY DEPARTMENT RIGHT OF WAY MAP, TOWN OF MONTVILLE, NORWICH-NEW LONDON ROAD FROM THE MOHEGAN CHURCH ROAD NORTHERLY ABOUT 6,000 FEET ROUTE NO. 2, SCALE: 1"=40', DATE: 5-9-29, LAST REVISED: JUNE 10, 1959, SHEET 1 OF 3.
- SITE DEVELOPMENT PLAN PROPERTY OF ROBERT F. LAWTON & LUANNE E. LAWTON, ROUTE 32, MONTVILLE, CONNECTICUT, DATE: JULY 6, 1990, SCALE: 1"=20', LAST REVISED: 10-18-90 BY CHANDLER PALMER & KING.
- TOWN OF MONTVILLE, DEFINING PTA LANE, GENERAL LOCATION SURVEY, DATE: 1-27-2016, SCALE: 1"=50', REVISED: 4-4-17 BY CLA ENGINEERS, INC.
- PROPERTY AND TOPOGRAPHIC SURVEY PREPARED FOR DANIEL MALCHMAN, 1905 NORWICH-NEW LONDON TURNPIKE, MONTVILLE CONNECTICUT, SCALE: 1"=20', DATED: MARCH 2025, LAST REVISED APRIL 22, 2025, JOB I.D. NO.: 24-3562, PREPARED BY BOUNDARIES LLC.



"TO MY KNOWLEDGE AND BELIEF THIS MAP IS SUBSTANTIALLY CORRECT AS NOTED HEREON."

70016 8-25-25
JOHN U. FAULISE JR. L.S. LICENSE NO. DATE



Easement Map
 Depicting Easement Area to be Granted to The Connecticut Light & Power Company dba Eversource Energy, Across the Property of Elaine Malchman and The Town of Montville
 1905 Norwich-New London Turnpike & PTA Lane
 Montville, Connecticut - File No. E25129

SCALE:	1" = 20'
DATE:	June 2025
JOB I.D. NO.:	24-3562
Revisions	

SHEET NO.
1

P:\CIVIL 3D PROJECTS\2024\24-3562_MALCHMAN\DWG\SURVEY\MALCHMAN-EASEMENT PLAN.DWG