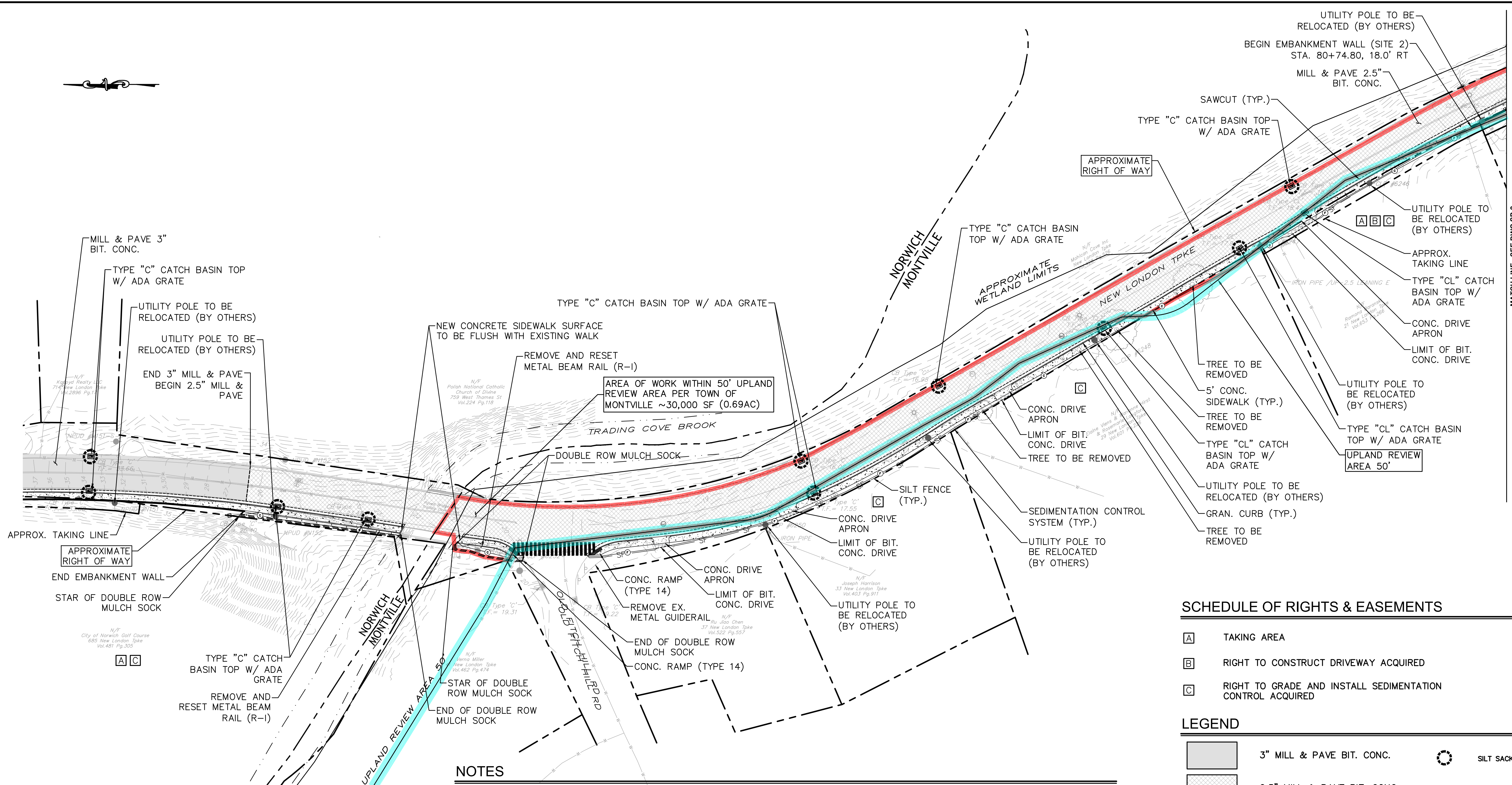


FREEMAN COMPANIES, LLC - R:\2023\2022-0107 Norwich New London Turnpike Sidewalks and Road Rehabilitation\DWG\MSH_2022_0107_UTIL_WETLAND.dwg Dec 10, 2025 - 4:49pm Plotted By: ywu



NOTES

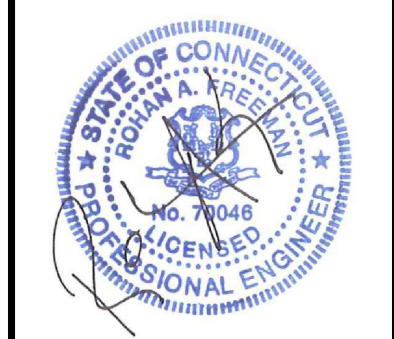
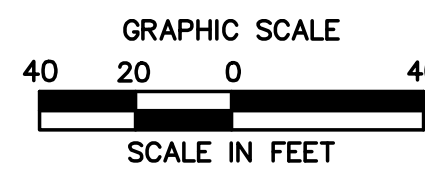
1. ALL SOIL DISTURBANCES SHALL BE TREATED WITH 6" TOPSOIL & TURF ESTABLISHMENT.
2. THE CONTRACTOR SHALL BE RESPONSIBLE FOR VERIFYING ALL DIMENSIONS AND ELEVATIONS PRIOR TO CONSTRUCTION.
3. CONTRACTOR SHALL COORDINATE WITH THE ENGINEER REGARDING THE LIMITS OF RESTORATION TO ENSURE A SMOOTH TRANSITION FROM NEW CONSTRUCTION TO EXISTING CONDITIONS.
4. CONTRACTOR TO MATCH EXISTING CURBLINE UNLESS SPECIFIED ON THE PLANS.
5. CONTRACTOR SHALL CONTACT "CALL BEFORE YOU DIG" (CBYD) 1-800-922-4455 PRIOR TO COMMENCING CONSTRUCTION.
6. EROSION AND SEDIMENTATION CONTROL MEASURES SHALL BE INSTALLED IN ACCORDANCE WITH THE PLANS OR AS DIRECTED BY THE ENGINEER.
7. CONTRACTOR SHALL COORDINATE WITH APPROPRIATE UTILITY FOR MANHOLES, GATES, BOXES AND FRAMES ETC., AFFECTED BY THE CONSTRUCTION ACTIVITIES WHICH ARE NOT IDENTIFIED AS BEING REMOVED SHALL BE RESET OR RECONSTRUCTED (AS REQUIRED) TO THE PROPER GRADE.
8. EXISTING SIGNS TO REMAIN UNLESS OTHERWISE NOTED.
9. ALL CATCH BASIN TOPS WITHIN LIMITS OF MILL AND PAVE TO BE REMOVED AND REPLACED WITH NEW TOPS SET TO GRADE.
10. ALL MANHOLES, GAS GATES, AND WATER GATES WITHIN LIMITS OF MILL AND PAVE TO BE RESET TO GRADE AS REQUIRED.
11. SURFACE COURSE OF THE SHOULDER RECONSTRUCTION AND RESURFACING AND RESURFACING ARE TO BE PAVED CONCURRENTLY.

SCHEDULE OF RIGHTS & EASEMENTS

- A** TAKING AREA
- B** RIGHT TO CONSTRUCT DRIVEWAY ACQUIRED
- C** RIGHT TO GRADE AND INSTALL SEDIMENTATION CONTROL ACQUIRED

LEGEND

	3" MILL & PAVE BIT. CONC.		SILT SACK
	2.5" MILL & PAVE BIT. CONC.		DOUBLE ROW MULCH SOCK
	CONCRETE SIDEWALK / CONCRETE DRIVEWAY APRON		
	BIT. CONCRETE DRIVEWAY		
	LIMITS OF WETLAND		
	LIMITS OF UPLAND REVIEW AREA		
	CUT/FILL APPROXIMATE SLOPE LIMITS		
	SEDIMENTATION CONTROL SYSTEM / SILT FENCE		
	HIGHWAY LINE		
	CATCH BASIN W/ ADA GRATE		
	AREA OF WORK WITHIN UPLAND REVIEW AREA		



NO.	DATE	DESCRIPTION	REVISIONS

FREEMAN COMPANIES, LLC
 36 JOHN STREET
 HARTFORD, CT 06106
 WWW.FREEMANCO.COM
 TEL: (860) 251-9550
 TOLL FREE: (800) 664-5141
 FAX: (860) 986-7161

**NEW LONDON TURNPIKE
SIDEWALKS & ROAD
REHABILITATION**

DESIGNED: C.S.
 DRAFTED: C.S.
 CHECKED: Y.L.
 APPROVED: P.A.R.
 SCALE: AS NOTED
 FC PROJECT NO.: 2022-0107
 DATE: 12/09/2025
 CAD: HW_MSH_2022_0107_UTIL

SITE PLAN FOR PERMITTING

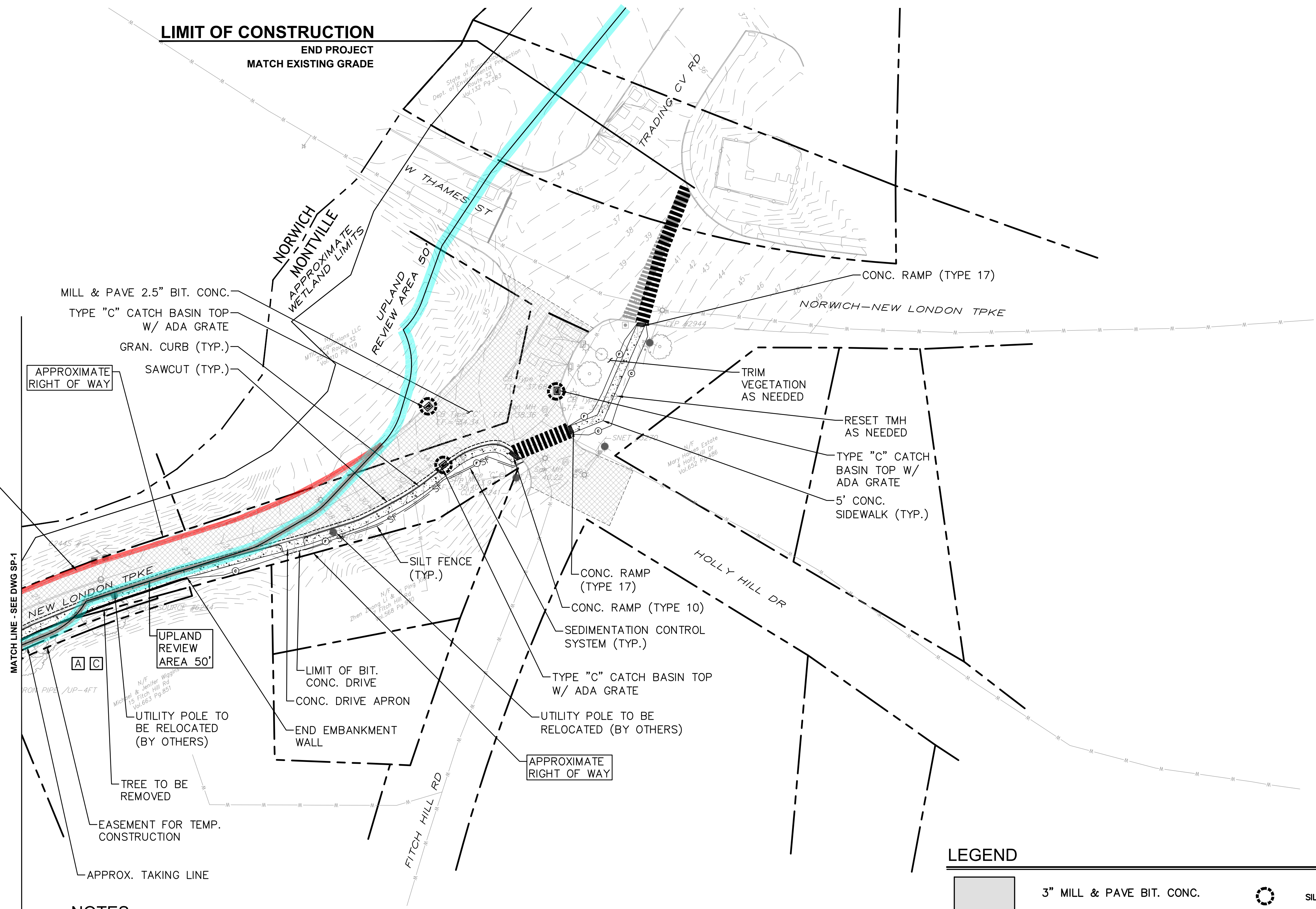
DWG NO.: SP-1
 SHEET NO.: 3 of 5

FREEMAN COMPANIES, LLC - R:\2023\2022-0107 Norwich New London Turnpike Sidewalks and Road Rehabilitation\DWG\HW_MSH_2022_0107_UTIL_WETLAND.dwg Dec 03, 2025-12:45pm Plotted By: gscott

SCHEDULE OF RIGHTS & EASEMENTS

- A** TAKING AREA
- B** RIGHT TO CONSTRUCT DRIVEWAY ACQUIRED
- C** RIGHT TO GRADE AND INSTALL SEDIMENTATION CONTROL ACQUIRED

AREA OF WORK
WITHIN 50' UPLAND
REVIEW AREA PER
TOWN OF MONTVILLE
~30,000 SF (0.69AC)

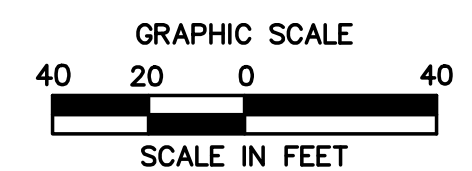


NOTES

1. ALL SOIL DISTURBANCES SHALL BE TREATED WITH 6" TOPSOIL & TURF ESTABLISHMENT.
2. THE CONTRACTOR SHALL BE RESPONSIBLE FOR VERIFYING ALL DIMENSIONS AND ELEVATIONS PRIOR TO CONSTRUCTION.
3. CONTRACTOR SHALL COORDINATE WITH THE ENGINEER REGARDING THE LIMITS OF RESTORATION TO ENSURE A SMOOTH TRANSITION FROM NEW CONSTRUCTION TO EXISTING CONDITIONS.
4. CONTRACTOR TO MATCH EXISTING CURBLINE UNLESS SPECIFIED ON THE PLANS.
5. CONTRACTOR SHALL CONTACT "CALL BEFORE YOU DIG" (CBYD) 1-800-922-4455 PRIOR TO COMMENCING CONSTRUCTION.
6. EROSION AND SEDIMENTATION CONTROL MEASURES SHALL BE INSTALLED IN ACCORDANCE WITH THE PLANS OR AS DIRECTED BY THE ENGINEER.
7. CONTRACTOR SHALL COORDINATE WITH APPROPRIATE UTILITY FOR MANHOLES, GATES, BOXES AND FRAMES ETC., AFFECTED BY THE CONSTRUCTION ACTIVITIES WHICH ARE NOT IDENTIFIED AS BEING REMOVED SHALL BE RESET OR RECONSTRUCTED (AS REQUIRED) TO THE PROPER GRADE.
8. EXISTING SIGNS TO REMAIN UNLESS OTHERWISE NOTED.
9. ALL CATCH BASIN TOPS WITHIN LIMITS OF MILL AND PAVE TO BE REMOVED AND REPLACED WITH NEW TOPS SET TO GRADE.
10. ALL MANHOLES, GAS GATES, AND WATER GATES WITHIN LIMITS OF MILL AND PAVE TO BE RESET TO GRADE AS REQUIRED.
11. SURFACE COURSE OF THE SHOULDER RECONSTRUCTION AND RESURFACING AND RESURFACING ARE TO BE PAVED CONCURRENTLY.

LEGEND

- | | | | |
|--|---|--|-----------|
| | 3" MILL & PAVE BIT. CONC. | | SILT SACK |
| | 2.5" MILL & PAVE BIT. CONC. | | |
| | CONCRETE SIDEWALK / CONCRETE DRIVEWAY APRON | | |
| | BIT. CONCRETE DRIVEWAY | | |
| | LIMITS OF WETLAND | | |
| | LIMITS OF UPLAND REVIEW AREA | | |
| | CUT/FILL APPROXIMATE SLOPE LIMITS | | |
| | SEDIMENTATION CONTROL SYSTEM / SILT FENCE | | |
| | HIGHWAY LINE | | |
| | CATCH BASIN W/ ADA GRATE | | |
| | AREA OF WORK WITHIN UPLAND REVIEW AREA | | |



NO.	DATE	DESCRIPTION	REVISIONS

FREEMAN COMPANIES
CORPORATION
DBE | DAS | MBE | CMASDC CERTIFIED
CIVIL | GEOTECHNICAL
SURVEY | ENVIRONMENTAL

FREEMAN COMPANIES, LLC
36 JOHN STREET
HARTFORD, CT 06106
WWW.FREEMANCO.COM
TEL: (860) 251-9550
TOLL FREE: (800) 664-5141
FAX: (860) 886-7161

ELEVATE YOUR EXPECTATIONS

NEW LONDON TURNPIKE SIDEWALKS & ROAD REHABILITATION

NORWICH, CONNECTICUT

DESIGNED: C.S.
DRAFTED: C.S.
CHECKED: Y.L.
APPROVED: P.A.R.
SCALE: AS NOTED
FC PROJECT NO.: 2022-0107
DATE: 12/09/2025
CAD: HW_MSH_2022_0107_UTIL

TITLE: SITE PLAN FOR PERMITTING

DWG NO.: SP-2

SHEET NO.: 4 of 5

EROSION AND SEDIMENT CONTROL NARRATIVE FOR:
NEW LONDON TURNPIKE SIDEWALKS & REHABILITATION
MONTVILLE, CONNECTICUT

I. INTRODUCTION

THE EROSION AND SEDIMENT CONTROL PLAN HAS BEEN PREPARED AS PART OF THE CONSTRUCTION PLANS FOR SIDEWALK AND ROADWAY REPAVING IN NORWICH, CONNECTICUT. INFORMATION RELATING TO SEDIMENTATION AND EROSION CONTROL IS INCLUDED IN THESE DRAWINGS. ALL SEDIMENTATION AND EROSION CONTROL ACTIVITIES SHALL BE IN COMPLIANCE WITH THE STATE OF CONNECTICUT DEPARTMENT OF ENERGY & ENVIRONMENTAL PROTECTION AND LOCAL REGULATIONS.

II. NARRATIVE

A. DESCRIPTION OF DEVELOPMENT

THE NEW SIDEWALK AND ROADWAY REHABILITATION ENCOMPASSES APPROXIMATELY 0.5 MILES OF ROADWAY BETWEEN ROUTE 82 AND ROUTE 32 IN NORWICH AND MONTVILLE, CONNECTICUT. THE PROJECT WILL INCLUDE A MILL AND OVERLAY OF THE 12' WIDTH OF THE ROAD AND A NEW SIDEWALK ALONG THIS FULL STRETCH OF ROADWAY.

B. CONSTRUCTION AND GRADING SCHEDULE

1. GENERAL

A. THE FOLLOWING IS TO SERVE AS A GENERAL GUIDE TO THE SEQUENCE OF CONSTRUCTION ACTIVITIES FOR SEDIMENT AND EROSION CONTROL MEASURES. PROJECT SCHEDULE WILL BE DETERMINED PRIOR TO CONSTRUCTION. THE CONTRACTOR WILL BE RESPONSIBLE FOR DETAILED SCHEDULING OF ALL CONSTRUCTION ACTIVITIES, HOWEVER, THE SCHEDULE WILL BE INCORPORATED INTO THE CONTRACT DOCUMENTS AND NO SUBSTANTIAL DEVIATION FROM THIS SCHEDULE SHALL OCCUR WITHOUT PRIOR APPROVAL OF THE CONSTRUCTION MANAGER.

2. CONSTRUCTION SEQUENCE

EACH PHASE ON CONSTRUCTION WILL INCLUDE THE INSTALLATION OF EROSION AND SEDIMENT (E&S) CONTROLS WHICH WILL NEED TO BE ADJUSTED AS THE PHASE EVOLVES AND AS DIRECTED BY THE ENGINEER. THE E&S CONTROLS WILL NEED TO BE INSPECTED DURING THE STATE OF FINAL INSPECTION AND APPROVED BY THE ENGINEER. MONTVILLE WEO TO BE PRESENT FOR ANY INSPECTION OF THE SILT FENCE IN EACH OF THE STAGES, PRIOR TO THE COMMENCEMENT OF ANY CONSTRUCTION.

A. CLEARING AND GRUBBING

(1.) CLEAR ALL TREES, SHRUBS, AND APPURTENANCES WITHIN THE PROPOSED PROJECT AREA THAT ARE NOT DESIGNATED TO REMAIN. CONTRACTOR SHALL VERIFY WITH THE ENGINEER REMOVAL OF ALL TREES OR SIGNIFICANT VEGETATION. DISPOSE OF CLEARED ITEMS AT AN APPROVED OFF-SITE DISPOSAL AREA.
(2.) CLEAN ALL EXISTING DRAINAGE STRUCTURES THAT ARE CURRENTLY FILLED.

B. EROSION AND SEDIMENT CONTROL

(1.) INSTALL HAYBALES, SILT FENCE, AND SILT SACKS AS SHOWN ON THE DRAWINGS OR AS DIRECTED BY THE ENGINEER.

C. SITE EXCAVATION AND GRADING

(1.) STRIP AND STOCK TOPSOIL IF THERE IS ANY MINOR STOCKPILING. INSTALL HAY BALES AND SILT FENCE AROUND STOCKPILE AS REQUIRED. (2.) RELOCATE OR INSTALL ADDITIONAL SILT FENCE OR HAY BALES TO FULLY ENCLOSE AND CONTROL ALL WORK AREAS AS DIRECTED BY THE ENGINEER.
(3.) AS EXCAVATION PROGRESSES, PROVIDE TEMPORARY CHANNELS OR BERMS AS NECESSARY TO DIRECT SITE RUNOFF TO THE PROPOSED OR EXISTING DRAINAGE STRUCTURES AS DIRECTED BY THE ENGINEER, OWNER.
(4.) THE CONTRACTOR SHALL STOCKPILE ALL EXCESS EXCAVATED MATERIAL AT LOCATIONS SHOWN ON THE DRAWINGS OR AS DIRECTED BY THE ENGINEER OR CLIENT. HAYBALES OR SILT FENCE SHALL BE PLACED AROUND THE PERIMETER OF ALL STOCKPILES. EXCESS MATERIAL WHICH WILL NOT BE REUSED SHALL BE TAKEN OFFSITE IMMEDIATELY.

D. ROUGH GRADING AND PAVING

SEDIMENT AND EROSION CONTROLS WITHIN THE PAVED AREAS SHALL BE LEFT IN PLACE UNTIL IMMEDIATELY BEFORE PAVING. MEASURES OUTSIDE OF THE PAVED AREA SHALL REMAIN UNTIL A STABLE VEGETATIVE GROWTH HAS BEEN ESTABLISHED ON ALL SLOPES OR UNTIL DIRECTED BY THE ENGINEER.

E. FINAL ITEMS

CLEAN ALL CATCH BASINS AND STORM MANHOLES OF ALL ACCUMULATED SEDIMENT AS DIRECTED BY THE ENGINEER.

3. CONTINGENCY PLANS FOR FAILED EROSION AND SEDIMENTATION

CONTROL MEASURES

FAILED EROSION AND SEDIMENTATION CONTROL MEASURES WILL BE EVALUATED ON A CASE BY CASE BASIS BY THE ENGINEER AND APPROPRIATE MEASURES TAKEN. THESE MEASURES MAY INCLUDE CLEANING AND/OR REPLACEMENT OF DEFECTIVE FACILITIES OR INSTALLATION OF NEW OR SUPPLEMENTAL FACILITIES.

C. DESIGN CRITERIA

THE FOLLOWING DESIGN REFERENCES WERE FOLLOWED FOR THE PREPARATION OF STORM DRAINAGE DESIGN AND EROSION AND SEDIMENT CONTROL PLANS:

1. CONNECTICUT DOT DRAINAGE MANUAL
2. CONNECTICUT STORMWATER QUALITY MANUAL
3. SCS GUIDELINE FOR SOIL EROSION AND SEDIMENT CONTROL

SEDIMENTATION CONTROL FENCING HAVE BEEN DESIGNED IN ACCORDANCE WITH THE LATEST CONNECTICUT GUIDELINES FOR SOIL EROSION AND SEDIMENT CONTROL.

D. CONSTRUCTION DETAILS

CONSTRUCTION DETAILS FOR THE PROPOSED PROJECT ARE PRESENTED ON THE DETAIL SHEETS.

E. INSTALLATION PROCEDURES

THE INSTALLATION PROCEDURES FOR STORMWATER MANAGEMENT FACILITIES AND EROSION AND SEDIMENTATION CONTROL MEASURES ARE PRESENTED IN THE PROJECTS TECHNICAL SPECIFICATIONS FOR DRAINAGE, EXCAVATION, FILLING AND GRADING; AND SEDIMENTATION AND EROSION CONTROL. ADDITIONAL INSTALLATION PROCEDURES ARE SHOWN ON THE CONSTRUCTION DETAILS BOTH VISUALLY AND BY USE OF CONSTRUCTION NOTES.

F. OPERATION AND MAINTENANCE

1. DURING CONSTRUCTION

BEST MANAGEMENT PRACTICES, SHALL BE UTILIZED TO CONTROL STORM WATER DISCHARGES AND TO PREVENT EROSION AND SEDIMENTATION AND TO OTHERWISE PREVENT POLLUTION OF WETLANDS OR WATERCOURSES. FOR INFORMATION AND TECHNICAL ASSISTANCE, CONTACT THE TOWN ENGINEER. THE PERMITTEE SHALL IMMEDIATELY INFORM THE ENGINEERING DEPARTMENT OF ANY PROBLEMS INVOLVING WETLANDS OR WATERCOURSES WHICH HAVE DEVELOPED IN THE COURSE OF, OR WHICH ARE CAUSED BY, THE AUTHORIZED WORK.

NO EQUIPMENT OR MATERIAL INCLUDING WITHOUT LIMITATION, FILL, CONSTRUCTION MATERIALS, OR DEBRIS, SHALL BE DEPOSITED, PLACED, OR STORED IN ANY WETLAND OR WATERCOURSE ON OR OFF SITE.

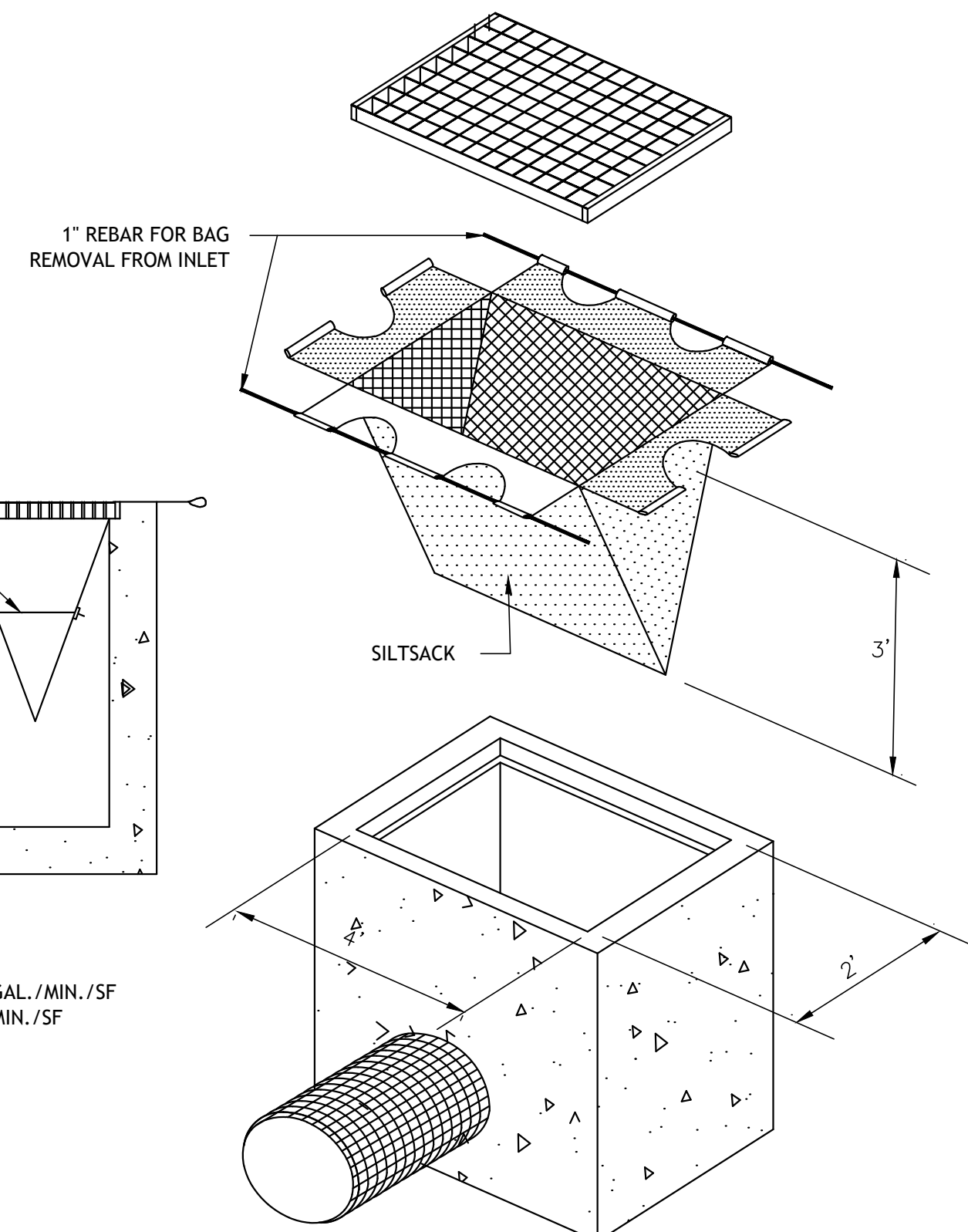
TIMELY IMPLEMENTATION AND MAINTENANCE OF SEDIMENT AND EROSION CONTROL MEASURES ARE REQUIRED. ALL SEDIMENT AND EROSION CONTROL MEASURES MUST BE MAINTAINED UNTIL ALL DISTURBED AREAS ARE STABILIZED.

A PRE-CONSTRUCTION MEETING SHALL BE HELD PRIOR TO THE COMMENCEMENT OF ANY CONSTRUCTION ACTIVITIES ON THE SITE WITH THE CONTRACTOR, AND TOWN STAFF.

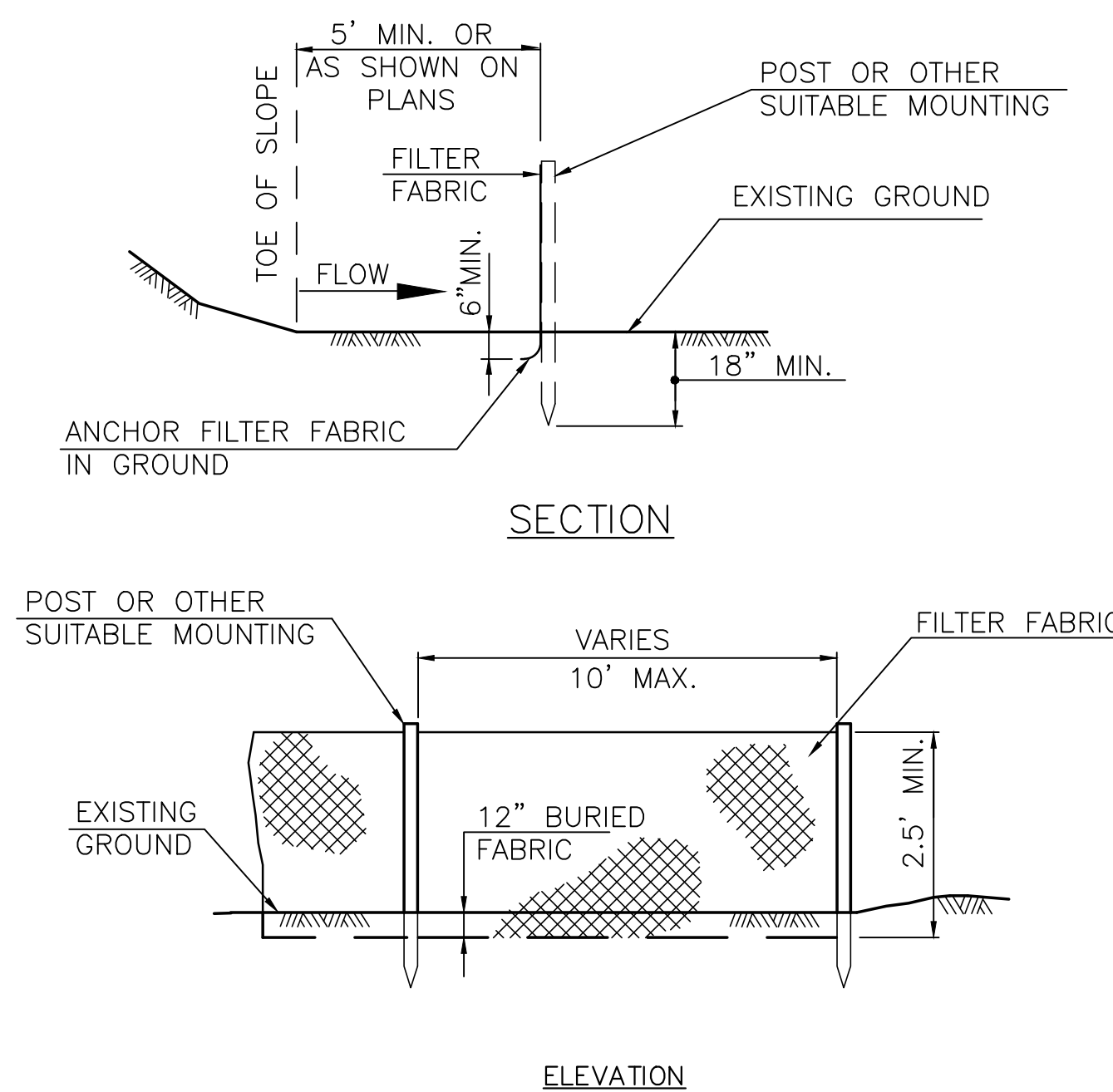
AS CONTAINED IN THE SEDIMENTATION AND EROSION CONTROL SPECIFICATIONS, OPERATIONS AND MAINTENANCE DURING CONSTRUCTION WILL CONSIST OF PERIODIC REPLACEMENT AND/OR CLEANING OF CLOGGED HAY BALES, SILT FENCE AND CONSTRUCTION ENTRANCE AT NO ADDITIONAL COST TO THE OWNER. ANY TEMPORARY SEDIMENTATION BASINS WILL BE CLEANED OF ACCUMULATED SEDIMENT WHEN THE DEPTH OF ACCUMULATED SEDIMENT EXCEEDS 8". ALL DRAINAGE STRUCTURES SHALL BE INSPECTED ON DAILY BASIS AND ANY NECESSARY CORRECTIVE ACTION TAKEN.

EROSION & SEDIMENT CONTROL NOTES

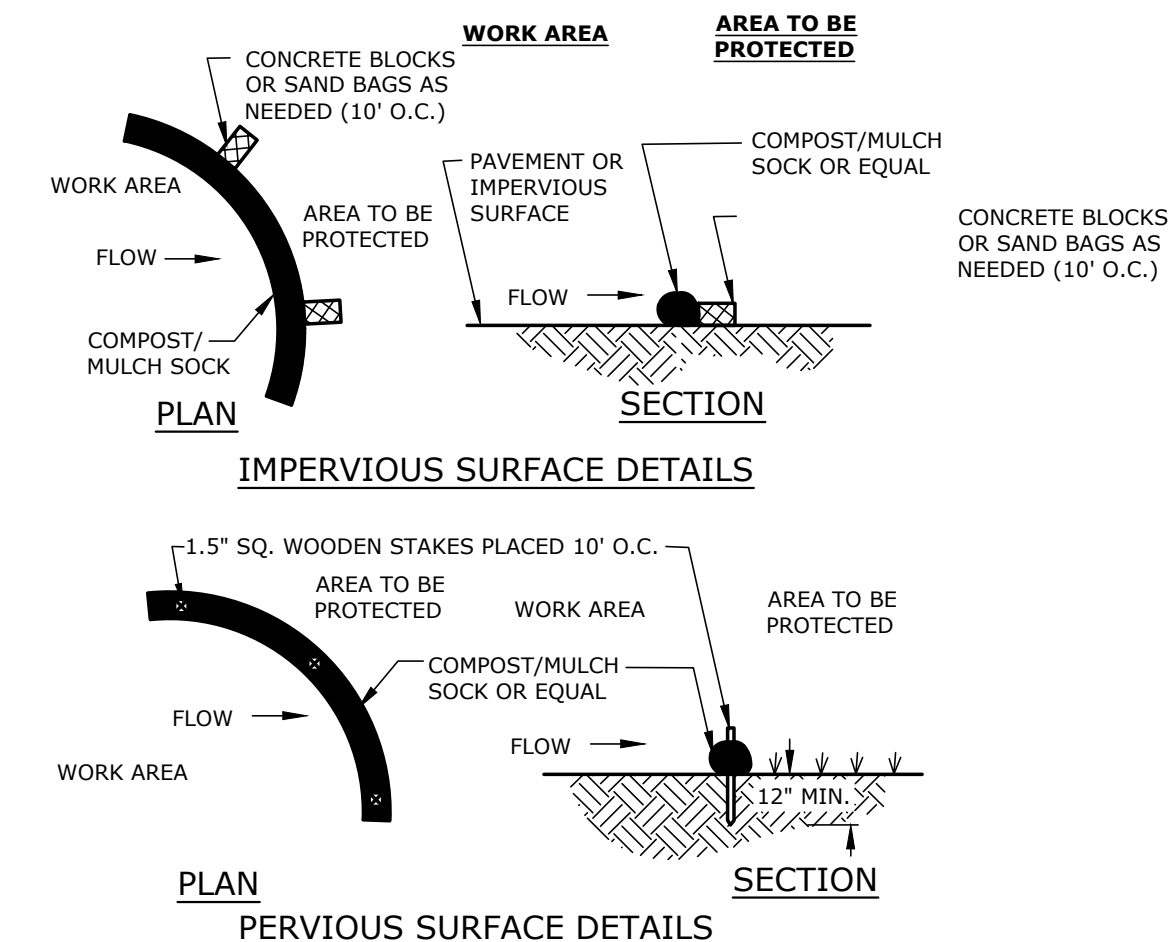
1. THE EROSION AND SEDIMENT CONTROLS SHOWN ON THE DRAWINGS DEPICT THE MINIMUM EROSION AND SEDIMENT CONTROL PRACTICES REQUIRED FOR THE PROJECT. THE CONTRACTOR SHALL TAKE ALL NECESSARY MEASURES TO PREVENT ERODED MATERIALS FROM LEAVING THE SITE.
2. ALL EROSION AND SEDIMENT CONTROL MEASURES SHALL BE INSTALLED AND APPROVED PRIOR TO THE START OF LAND CLEARING AND CONSTRUCTION.
3. EROSION CONTROL MEASURES SHALL BE MAINTAINED BY THE CONTRACTOR THROUGHOUT THE CONSTRUCTION PERIOD AND UNTIL ALL AREAS ARE STABILIZED. IF FULL IMPLEMENTATION OF APPROVED EROSION CONTROL PLANS DOES NOT PROVIDE FOR EFFECTIVE EROSION CONTROL, ADDITIONAL EROSION AND SEDIMENT CONTROL MEASURES SHALL BE IMPLEMENTED AS DIRECTED BY THE ENGINEER/OWNER TO CONTROL OR TREAT THE SEDIMENT SOURCE AT THE CONTRACTOR'S EXPENSE.
4. WHEN CONSTRUCTION ACTIVITIES HAVE PERMANENTLY CEASED OR WHEN FINAL GRADES ARE REACHED, STABILIZATION AND PROTECTION MEASURES SHALL BE IMPLEMENTED WITHIN SEVEN (7) DAYS.
5. REMOVE EROSION AND SEDIMENT CONTROLS AFTER AREAS ARE STABILIZED.
6. ALL EROSION AND SEDIMENTATION CONTROL MEASURES SHALL CONFORM TO THE REQUIREMENTS OF THE "2023 CONNECTICUT GUIDELINES FOR SOIL EROSION AND SEDIMENT CONTROL" AS AMENDED.
7. THE RESPONSIBLE CONTACT PERSON FOR ASSURING THAT ALL SOIL EROSION AND SEDIMENTATION CONTROL MEASURES ARE PROPERLY INSTALLED AND MAINTAINED WILL BE THE SITE CONTRACTOR.



SILT SACK
N.T.S.



SILT FENCE
N.T.S.



COMPOST/MULCH SOCK
N.T.S.



NO.	DATE	DESCRIPTION	REVISIONS
01	01/06/2026	EROSION CONTROL MEASURES	

FREEMAN COMPANIES
DBE | DAS | MBE | GWKSC CERTIFIED
CIVIL | GEOTECHNICAL
SURVEY | ENVIRONMENTAL

FREEMAN COMPANIES, LLC
36 JOHN STREET
HARTFORD, CT 06106
WWW.FREEMANCO.COM
TEL: (860) 251-9550
TOLL FREE: (800) 664-5141
FAX: (860) 886-7161

ELEVATE YOUR EXPECTATIONS

NEW LONDON TURNPIKE
SIDEWALKS & ROAD
REHABILITATION
NORWICH, CONNECTICUT

DESIGNED:	C.S.
DRAFTED:	C.S.
CHECKED:	Y.L.
APPROVED:	P.A.R.
SCALE:	N.T.S.
FC PROJECT NO.:	2022-0107
DATE:	12/09/2025
CAD:HW_MSH_2022_0107_UTIL	

TITLE: EROSION & SEDIMENT CONTROL DETAILS

DWG NO.: MDS-1

SHEET NO.: 5 of 5