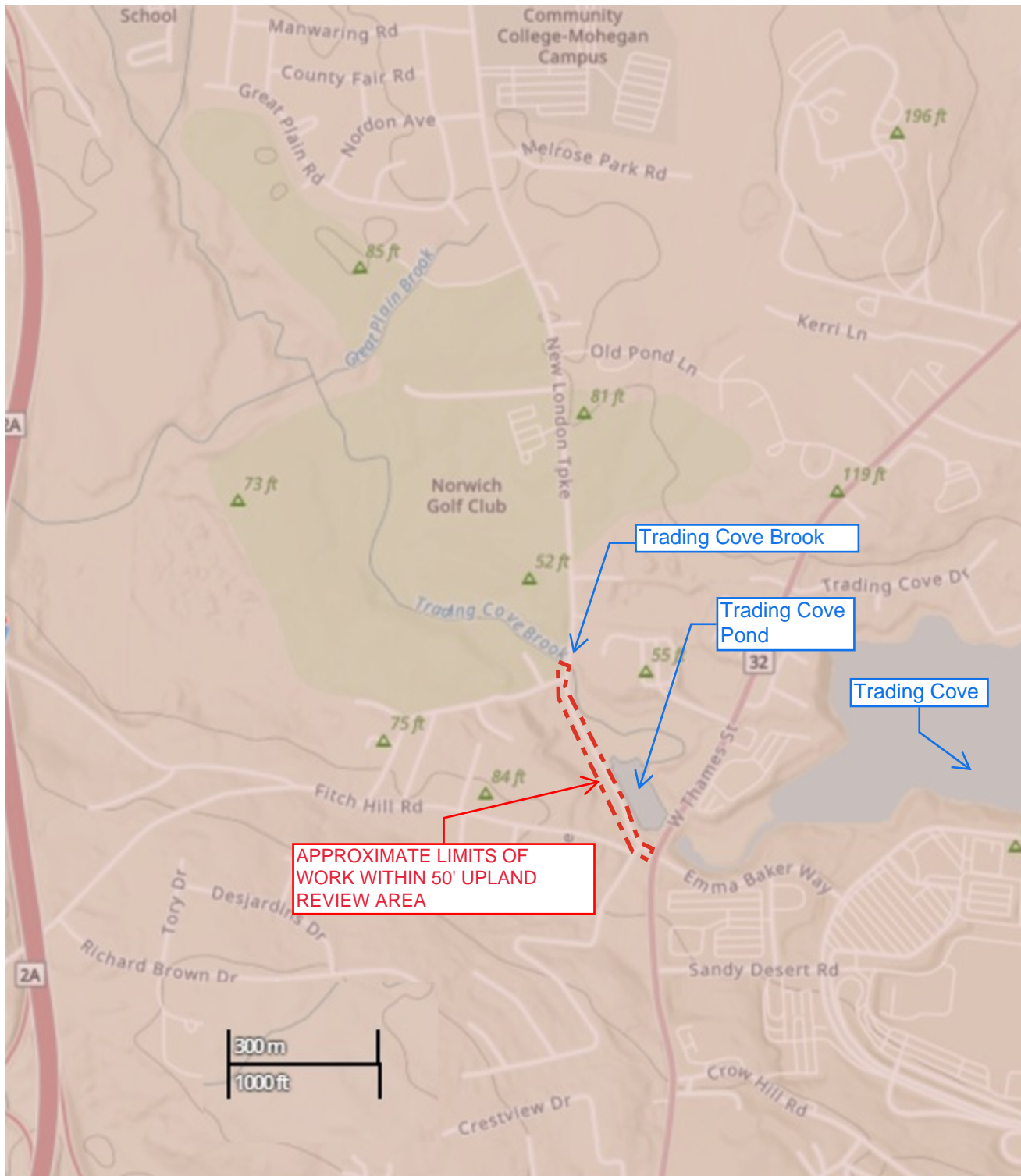


Freeman Companies, LLC - R:\2022\2022-0107 Norwich New London Turnpike Sidewalks and Road Rehabilitation\DWG\HW_MSH_2022_0107_UTL_WETLAND.dwg Jan 14, 2026 - 6:17pm Plotted By: jmoritz

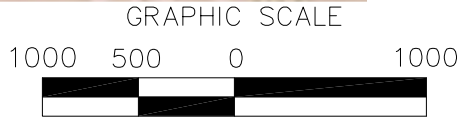
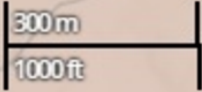


APPROXIMATE LIMITS OF
WORK WITHIN 50' UPLAND
REVIEW AREA

Trading Cove Brook

Trading Cove
Pond

Trading Cove



GRAPHIC SCALE

SCALE IN FEET

FREEMAN
COMPANIES
LAND DEVELOPMENT | ENGINEERING DESIGN | CONSTRUCTION SERVICES
100 WELLS STREET, SUITE 2H
HARTFORD, CT 06103
WWW.FREEMANCOS.COM
(860)251-9550
FAX: (860)986-7161
ELEVATE YOUR EXPECTATIONS

**NEW LONDON TURNPIKE
SIDEWALK & ROAD REHABILITATION**

NORWICH, CONNECTICUT

DRAFTED: J.M.
CHECKED: Y.W.
APPROVED: T.W.
SCALED: 1"=1000'
PROJECT NO.: 2022-0107
DATE: 01/14/26

FIG. **1**