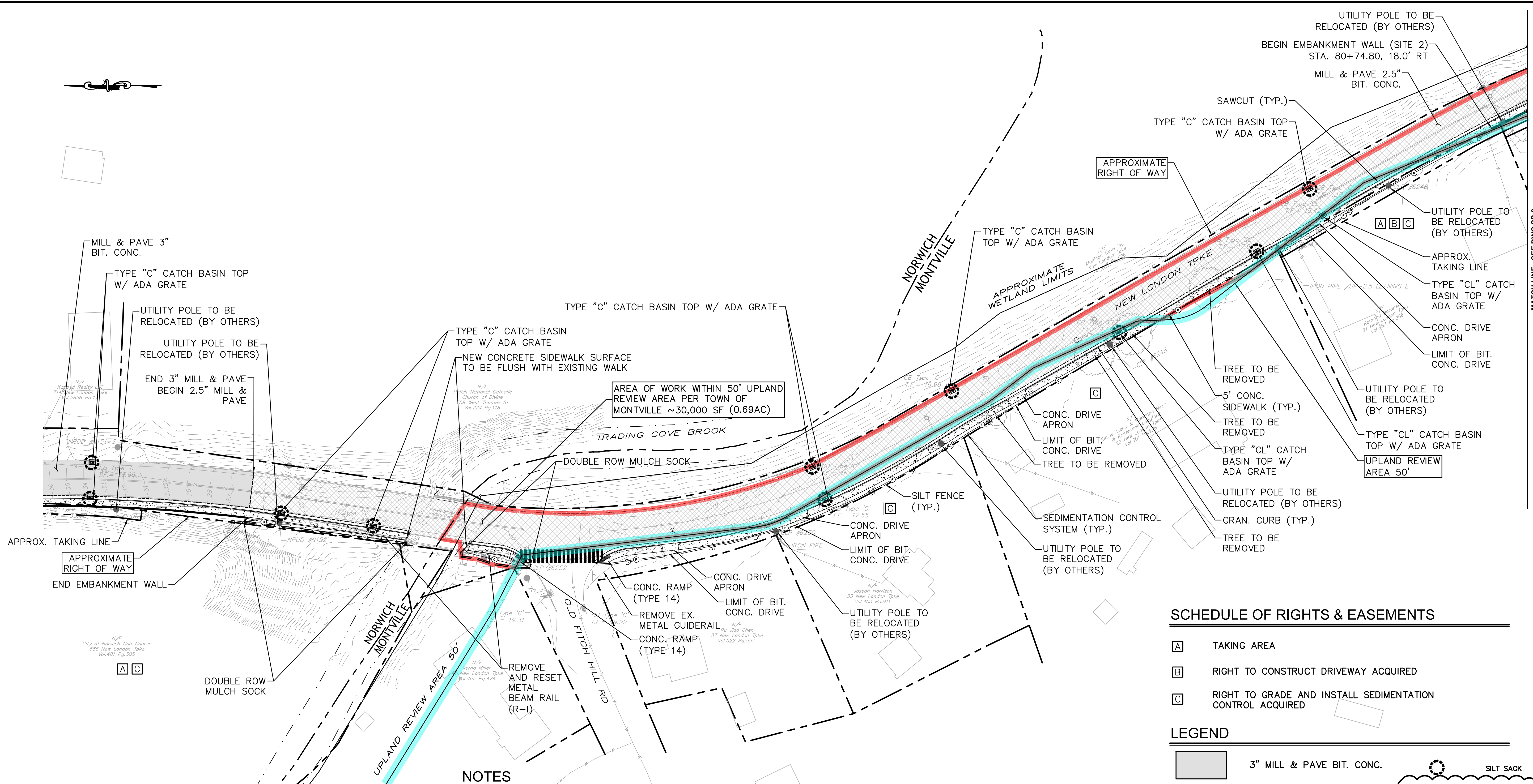


FREEMAN COMPANIES, LLC - R:\2023\2022-0107 Norwich New London Turnpike Sidewalks and Road Rehabilitation\DWG\MSH_2022_0107_UTIL_WETLAND.dwg Jan 14, 2025 - 6:06pm Plotted By: jmartz



NOTES

1. ALL SOIL DISTURBANCES SHALL BE TREATED WITH 6" TOPSOIL & TURF ESTABLISHMENT.
2. THE CONTRACTOR SHALL BE RESPONSIBLE FOR VERIFYING ALL DIMENSIONS AND ELEVATIONS PRIOR TO CONSTRUCTION.
3. CONTRACTOR SHALL COORDINATE WITH THE ENGINEER REGARDING THE LIMITS OF RESTORATION TO ENSURE A SMOOTH TRANSITION FROM NEW CONSTRUCTION TO EXISTING CONDITIONS.
4. CONTRACTOR TO MATCH EXISTING CURBLINE UNLESS SPECIFIED ON THE PLANS.
5. CONTRACTOR SHALL CONTACT "CALL BEFORE YOU DIG" (CBYD) 1-800-922-4455 PRIOR TO COMMENCING CONSTRUCTION.
6. EROSION AND SEDIMENTATION CONTROL MEASURES SHALL BE INSTALLED IN ACCORDANCE WITH THE PLANS OR AS DIRECTED BY THE ENGINEER.
7. CONTRACTOR SHALL COORDINATE WITH APPROPRIATE UTILITY FOR MANHOLES, GATES, BOXES AND FRAMES ETC., AFFECTED BY THE CONSTRUCTION ACTIVITIES WHICH ARE NOT IDENTIFIED AS BEING REMOVED SHALL BE RESET OR RECONSTRUCTED (AS REQUIRED) TO THE PROPER GRADE.
8. EXISTING SIGNS TO REMAIN UNLESS OTHERWISE NOTED.
9. ALL CATCH BASIN TOPS WITHIN LIMITS OF MILL AND PAVE TO BE REMOVED AND REPLACED WITH NEW TOPS SET TO GRADE.
10. ALL MANHOLES, GAS GATES, AND WATER GATES WITHIN LIMITS OF MILL AND PAVE TO BE RESET TO GRADE AS REQUIRED.
11. SURFACE COURSE OF THE SHOULDER RECONSTRUCTION AND RESURFACING AND RESURFACING ARE TO BE PAVED CONCURRENTLY.

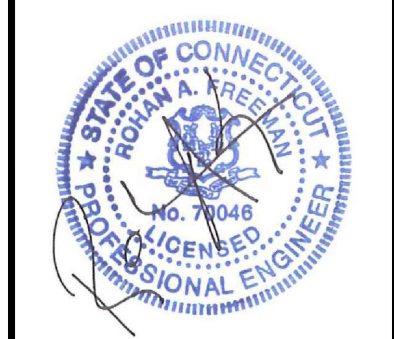
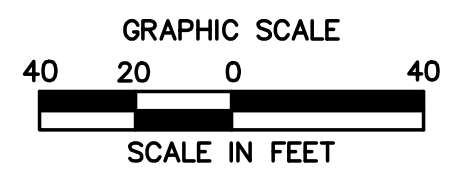
12. THE ENTIRE SITE IS LOCATED WITHIN THE AE FLOOD ZONE.

SCHEDULE OF RIGHTS & EASEMENTS

- A TAKING AREA
- B RIGHT TO CONSTRUCT DRIVEWAY ACQUIRED
- C RIGHT TO GRADE AND INSTALL SEDIMENTATION CONTROL ACQUIRED

LEGEND

	3" MILL & PAVE BIT. CONC.		SILT SACK
	2.5" MILL & PAVE BIT. CONC.		DOUBLE ROW MULCH SOCK
	CONCRETE SIDEWALK / CONCRETE DRIVEWAY APRON		
	BIT. CONCRETE DRIVEWAY		
	LIMITS OF WETLAND		
	LIMITS OF UPLAND REVIEW AREA		
	CUT/FILL APPROXIMATE SLOPE LIMITS		
	SEDIMENTATION CONTROL SYSTEM / SILT FENCE		
	HIGHWAY LINE		
	CATCH BASIN W/ ADA GRATE		
	AREA OF WORK WITHIN UPLAND REVIEW AREA		



NO.	DATE	DESCRIPTION	REVISIONS
02	01/14/2025	STAFF COMMENTS/SOIL SCIENTIST	
01	01/06/2025	EROSION CONTROL MEASURES	

FREEMAN COMPANIES, LLC
 36 JOHN STREET
 HARTFORD, CT 06106
 WWW.FREEMANCO.COM
 TEL: (860) 251-9550
 TOLL FREE: (800) 664-5141
 FAX: (860) 986-7161

ELEVATE YOUR EXPECTATIONS

**NEW LONDON TURNPIKE
 SIDEWALKS & ROAD
 REHABILITATION**
 NORWICH, CONNECTICUT

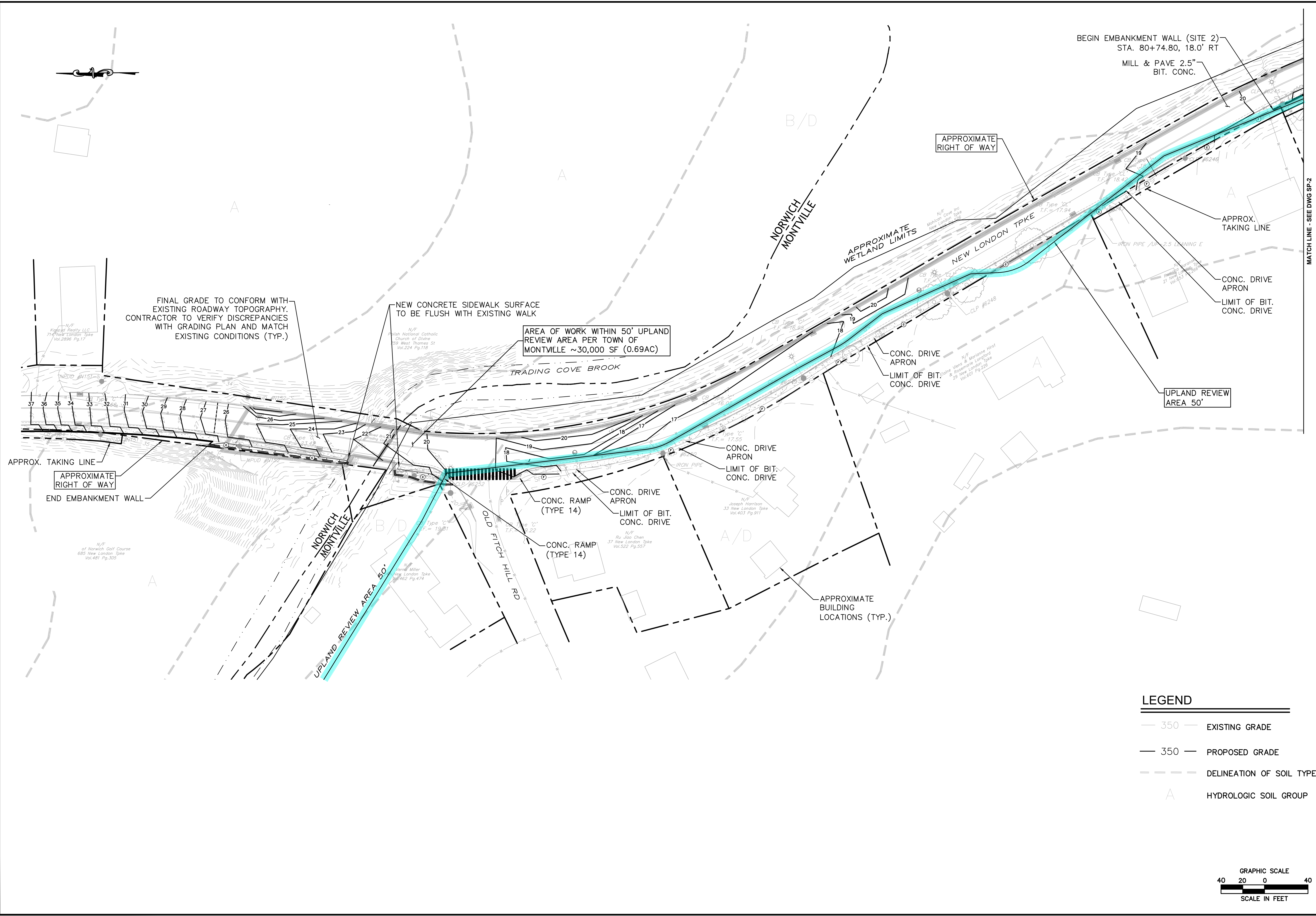
DESIGNED: C.S.
 DRAFTED: C.S.
 CHECKED: Y.L.
 APPROVED: P.A.R.
 SCALE: AS NOTED
 FC PROJECT NO.: 2022-0107
 DATE: 12/09/2025
 CAD: HW_MSH_2022_0107_UTIL

SITE PLAN FOR PERMITTING

DWG NO.: SP-1

SHEET NO.: 3 of 7

FREEMAN COMPANIES, LLC - R:\2022\2022-0107 Norwich New London Turnpike Sidewalks and Road Rehabilitation\DWG\HW_MSH_2022_0107_GRD.dwg Jan 14, 2026 - 6:02pm Plotted By: jmartz



BEGIN EMBANKMENT WALL (SITE 2)
STA. 80+74.80, 18.0' RT
MILL & PAVE 2.5"
BIT. CONC.

APPROXIMATE
RIGHT OF WAY

APPROX.
TAKING LINE

CONC. DRIVE
APRON
LIMIT OF BIT.
CONC. DRIVE

UPLAND REVIEW
AREA 50'

FINAL GRADE TO CONFORM WITH
EXISTING ROADWAY TOPOGRAPHY.
CONTRACTOR TO VERIFY DISCREPANCIES
WITH GRADING PLAN AND MATCH
EXISTING CONDITIONS (TYP.)

AREA OF WORK WITHIN 50' UPLAND
REVIEW AREA PER TOWN OF
MONTVILLE ~30,000 SF (0.69AC)

APPROXIMATE
RIGHT OF WAY

APPROX. TAKING LINE

END EMBANKMENT WALL

CONC. DRIVE
APRON
LIMIT OF BIT.
CONC. DRIVE

CONC. DRIVE
APRON
LIMIT OF BIT.
CONC. DRIVE

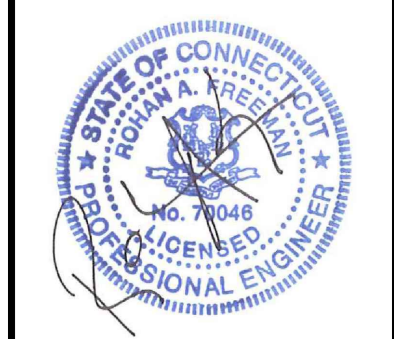
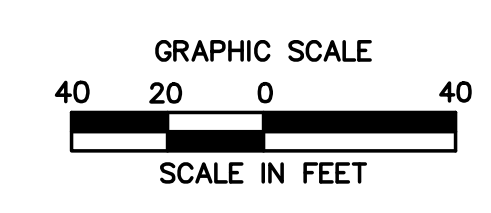
CONC. RAMP
(TYPE 14)
LIMIT OF BIT.
CONC. DRIVE

CONC. RAMP
(TYPE 14)
LIMIT OF BIT.
CONC. DRIVE

APPROXIMATE
BUILDING
LOCATIONS (TYP.)

LEGEND

- 350 — EXISTING GRADE
- 350 — PROPOSED GRADE
- - - - DELINEATION OF SOIL TYPE
- A HYDROLOGIC SOIL GROUP



NO.	DATE	DESCRIPTION	REVISIONS
01	01/06/2026	EROSION CONTROL MEASURES	
02	01/14/2026	STAFF COMMENTS/SOIL SCIENTIST	

FREEMAN COMPANIES
CORPORATION
DBE | DAS | MBE | CMASCC CERTIFIED
CIVIL | GEOTECHNICAL
SURVEY | ENVIRONMENTAL

FREEMAN COMPANIES, LLC
36 JOHN STREET
HARTFORD, CT 06106
WWW.FREEMANCO.COM
TEL: (860) 251-9550
TOLL FREE: (800) 664-5141
FAX: (860) 986-7161

ELEVATE YOUR EXPECTATIONS

**NEW LONDON TURNPIKE
SIDEWALKS & ROAD
REHABILITATION**
NORWICH, CONNECTICUT

DESIGNED: C.S.
DRAFTED: C.S.
CHECKED: Y.L.
APPROVED: P.A.R.
SCALE: AS NOTED
FC PROJECT NO.: 2022-0107
DATE: 12/09/2025
CAD: HW_MSH_2022_0107_GRD

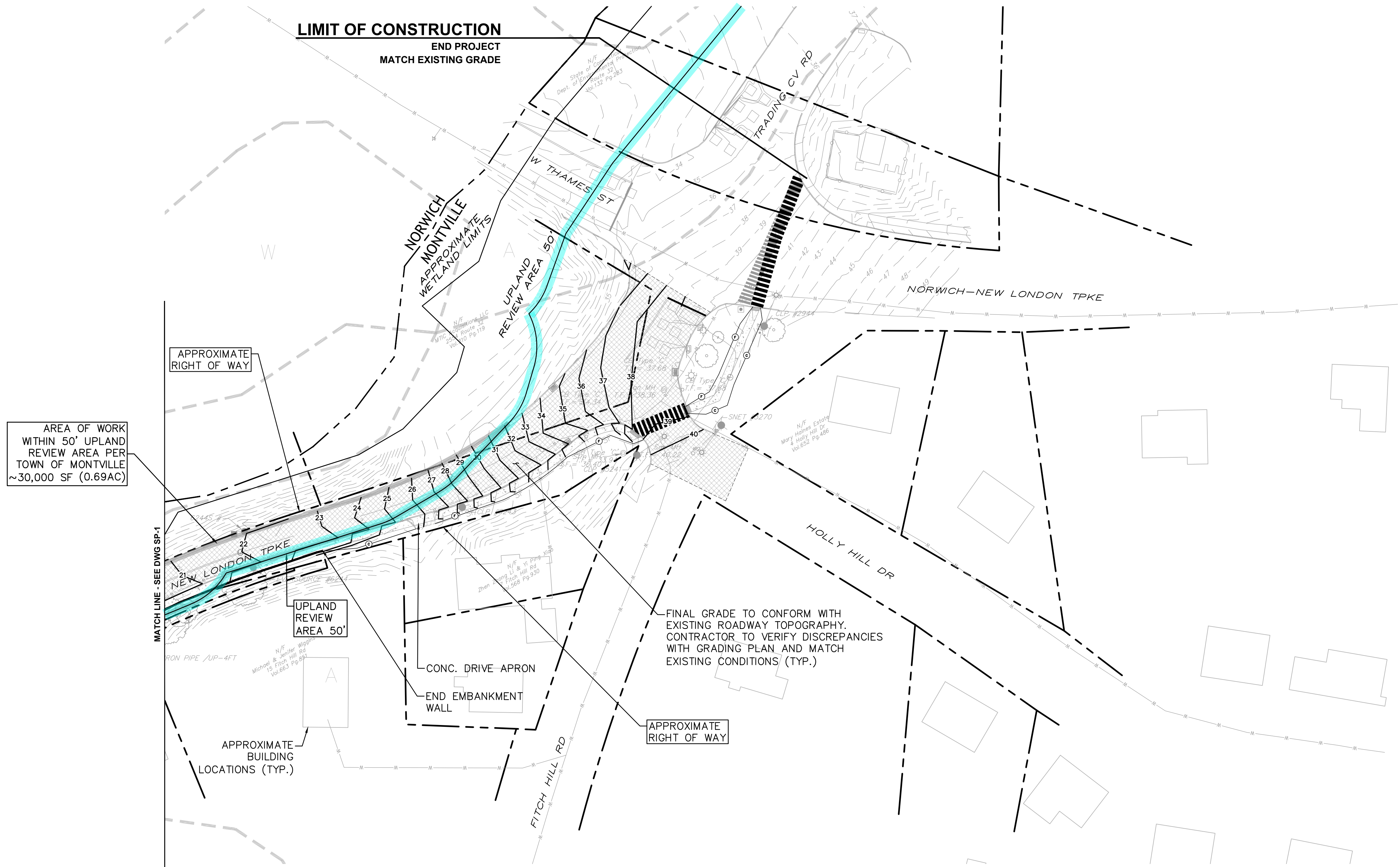
TITLE:
**GRADING PLAN
FOR PERMITTING**

DWG NO.:
GRD-1

SHEET NO.:
5 of 7

THESE DRAWINGS SHALL NOT BE UTILIZED BY ANY PERSON, FIRM OR CORPORATION WITHOUT THE SPECIFIC WRITTEN PERMISSION OF FREEMAN COMPANIES, LLC

FREEMAN COMPANIES, LLC - R:\2022\2022-0107 Norwich New London Turnpike Sidewalks and Road Rehabilitation\DWG\HW_MSH_2022_0107_GRD.dwg Jan 14, 2026 - 6:02pm Plotted By: jmartz



AREA OF WORK
WITHIN 50' UPLAND
REVIEW AREA PER
TOWN OF MONTVILLE
~30,000 SF (0.69AC)

MATCH LINE - SEE DWG SP-1

APPROXIMATE
RIGHT OF WAY

UPLAND
REVIEW
AREA 50'

CONC. DRIVE-APRON
END EMBANKMENT
WALL

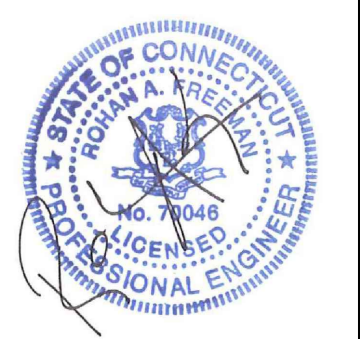
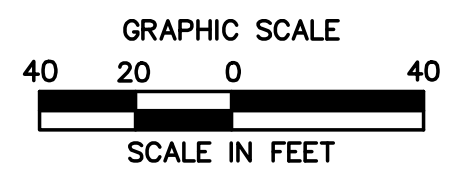
APPROXIMATE
BUILDING
LOCATIONS (TYP.)

FINAL GRADE TO CONFORM WITH
EXISTING ROADWAY TOPOGRAPHY.
CONTRACTOR TO VERIFY DISCREPANCIES
WITH GRADING PLAN AND MATCH
EXISTING CONDITIONS (TYP.)

APPROXIMATE
RIGHT OF WAY

LEGEND

- 350 — EXISTING GRADE
- 350 — PROPOSED GRADE
- - - - DELINEATION OF SOIL TYPE
- A HYDROLOGIC SOIL GROUP



NO.	DATE	DESCRIPTION	REVISIONS
01	01/06/2026	EROSION CONTROL MEASURES	
02	01/14/2026	STAFF COMMENTS/SOIL SCIENTIST	

FREEMAN COMPANIES
DBE | DAS | MBE | CMASDC CERTIFIED
CIVIL | GEOTECHNICAL
SURVEY | ENVIRONMENTAL

FREEMAN COMPANIES, LLC
36 JOHN STREET
HARTFORD, CT 06106
WWW.FREEMANCO.COM
TEL: (860) 251-9550
TOLL FREE: (800) 664-5141
FAX: (860) 986-7161

ELEVATE YOUR EXPECTATIONS

**NEW LONDON TURNPIKE
SIDEWALKS & ROAD
REHABILITATION**
NORWICH, CONNECTICUT

DESIGNED: C.S.
DRAFTED: C.S.
CHECKED: Y.L.
APPROVED: P.A.R.
SCALE: AS NOTED
FC PROJECT NO.: 2022-0107
DATE: 12/09/2025
CAD: HW_MSH_2022_0107_GRD

TITLE:
**GRADING PLAN
FOR PERMITTING**

DWG NO.: **GRD-2**

SHEET NO.:
6 of 7

EROSION & SEDIMENT CONTROL NOTES

1. THE EROSION AND SEDIMENT CONTROLS SHOWN ON THE DRAWINGS DEPICT THE MINIMUM EROSION AND SEDIMENT CONTROL PRACTICES REQUIRED FOR THE PROJECT. THE CONTRACTOR SHALL TAKE ALL NECESSARY MEASURES TO PREVENT ERODED MATERIALS FROM LEAVING THE SITE.
2. ALL EROSION AND SEDIMENT CONTROL MEASURES SHALL BE INSTALLED AND APPROVED PRIOR TO THE START OF LAND CLEARING AND CONSTRUCTION.
3. EROSION CONTROL MEASURES SHALL BE MAINTAINED BY THE CONTRACTOR THROUGHOUT THE CONSTRUCTION PERIOD AND UNTIL ALL AREAS ARE STABILIZED. IF FULL IMPLEMENTATION OF APPROVED EROSION CONTROL PLANS DOES NOT PROVIDE FOR EFFECTIVE EROSION CONTROL, ADDITIONAL EROSION AND SEDIMENT CONTROL MEASURES SHALL BE IMPLEMENTED AS DIRECTED BY THE ENGINEER/OWNER TO CONTROL OR TREAT THE SEDIMENT SOURCE AT THE CONTRACTOR'S EXPENSE.
4. WHEN CONSTRUCTION ACTIVITIES HAVE PERMANENTLY CEASED OR WHEN FINAL GRADES ARE REACHED, STABILIZATION AND PROTECTION MEASURES SHALL BE IMPLEMENTED WITHIN SEVEN (7) DAYS.
5. REMOVE EROSION AND SEDIMENT CONTROLS AFTER AREAS ARE STABILIZED.
6. ALL EROSION AND SEDIMENTATION CONTROL MEASURES SHALL CONFORM TO THE REQUIREMENTS OF THE "2023 CONNECTICUT GUIDELINES FOR SOIL EROSION AND SEDIMENT CONTROL" AS AMENDED.
7. THE RESPONSIBLE CONTACT PERSON FOR ASSURING THAT ALL SOIL EROSION AND SEDIMENTATION CONTROL MEASURES ARE PROPERLY INSTALLED AND MAINTAINED WILL BE THE SITE CONTRACTOR.

I. INTRODUCTION

THE EROSION AND SEDIMENT CONTROL PLAN HAS BEEN PREPARED AS PART OF THE CONSTRUCTION PLANS FOR SIDEWALK AND ROADWAY REPAVING IN NORWICH, CONNECTICUT. A PORTION OF THE PROJECT IS LOCATED OVER TRADING COVE, BROOK AND ALONG THE ASSOCIATED CORRIDOR. INFORMATION RELATED TO EROSION AND SEDIMENT CONTROL MEASURES IS INCLUDED IN THESE DRAWINGS. ALL EROSION AND SEDIMENT CONTROL ACTIVITIES SHALL COMPLY WITH THE REQUIREMENTS OF THE CONNECTICUT DEPARTMENT OF ENERGY AND ENVIRONMENTAL PROTECTION (CT DEEP) AND ALL APPLICABLE LOCAL REGULATIONS.

II. NARRATIVE

A. DESCRIPTION OF DEVELOPMENT

THE NEW SIDEWALK AND ROADWAY REHABILITATION ENCOMPASSES APPROXIMATELY 0.75 MILES OF ROADWAY BETWEEN ROUTE 82 AND ROUTE 32 IN NORWICH AND MONTVILLE, CONNECTICUT. THE PROJECT WILL INCLUDE A MILL AND OVERLAY OF THE FULL WIDTH OF THE ROAD AND A NEW SIDEWALK ALONG THIS FULL STRETCH OF ROADWAY. THE PROJECT DRAINS TO J.

B. CONSTRUCTION AND GRADING SCHEDULE

1. GENERAL

A. THE FOLLOWING IS TO SERVE AS A GENERAL GUIDE TO THE SEQUENCE OF CONSTRUCTION ACTIVITIES FOR SEDIMENT AND EROSION CONTROL MEASURES. PROJECT SCHEDULE WILL BE DETERMINED PRIOR TO CONSTRUCTION. THE CONTRACTOR WILL BE RESPONSIBLE FOR DETAILED SCHEDULING OF ALL CONSTRUCTION ACTIVITIES. HOWEVER, THE SCHEDULE WILL BE INCORPORATED INTO THE CONTRACT DOCUMENTS AND NO SUBSTANTIAL DEVIATION FROM THIS SCHEDULE SHALL OCCUR WITHOUT PRIOR APPROVAL OF THE CONSTRUCTION MANAGER.

2. CONSTRUCTION SEQUENCE

EACH PHASE ON CONSTRUCTION WILL INCLUDE THE INSTALLATION OF EROSION AND SEDIMENT (E&S) CONTROLS WHICH WILL NEED TO BE ADJUSTED AS THE PHASE EVOLVES AND AS DIRECTED BY THE ENGINEER. THE E&S CONTROLS WILL NEED TO BE INSPECTED DURING THE START OF EACH PHASE AND ADJUSTED OR REPLACED AS NEEDED. MONTVILLE WEO TO BE PRESENT FOR ANY INSPECTION OF THE SILT FENCE IN EACH OF THE STAGES, PRIOR TO THE COMMENCEMENT OF ANY CONSTRUCTION.

A. CLEARING AND CRUBBING

(1) CLEAR ALL TREES, SHRUBS, AND APPURTENANCES WITHIN THE PROPOSED PROJECT AREA THAT ARE NOT DESIGNATED TO REMAIN. CONTRACTOR SHALL VERIFY WITH THE ENGINEER REMOVAL OF ALL TREES OR SIGNIFICANT VEGETATION. DISPOSE OF CLEARED ITEMS AT AN APPROVED OFF-SITE DISPOSAL AREA.
(2) CLEAN ALL EXISTING DRAINAGE STRUCTURES THAT ARE CURRENTLY FILLED.

B. EROSION AND SEDIMENT CONTROL

(1) INSTALL HAYBALES, SILT FENCE, AND SILT SACKS AS SHOWN ON THE DRAWINGS OR AS DIRECTED BY THE ENGINEER.

C. SITE EXCAVATION AND GRADING

(1) STRIP AND STOCK TOPSOIL. IF THERE IS ANY MINOR STOCKPILING, INSTALL HAY BALES AND SILT FENCE AROUND STOCKPILE AS REQUIRED. (2) RELOCATE OR INSTALL ADDITIONAL SILT FENCE OR HAY BALES TO FULLY ENCLOSE AND CONTROL ALL WORK AREAS AS DIRECTED BY THE ENGINEER.
(3) AS EXCAVATION PROGRESSES, PROVIDE TEMPORARY CHANNELS OR BERMS AS NECESSARY TO DIRECT SITE RUNOFF TO THE PROPOSED OR EXISTING DRAINAGE STRUCTURES AS DIRECTED BY THE ENGINEER. OWNER.
(4) THE CONTRACTOR SHALL STOCKPILE ALL EXCESS EXCAVATED MATERIAL AT LOCATIONS SHOWN ON THE DRAWINGS OR AS DIRECTED BY THE ENGINEER OR CLIENT. HAYBALES OR SILT FENCE SHALL BE PLACED AROUND THE PERIMETER OF ALL STOCKPILES. EXCESS MATERIAL WHICH WILL NOT BE REUSED SHALL BE TAKEN OFFSITE IMMEDIATELY.

D. ROUGH GRADING AND PAVING

SEDIMENT AND EROSION CONTROLS WITHIN THE PAVED AREAS SHALL BE LEFT IN PLACE UNTIL IMMEDIATELY BEFORE PAVING. MEASURES OUTSIDE OF THE PAVED AREA SHALL REMAIN UNTIL A STABLE VEGETATIVE GROWTH HAS BEEN ESTABLISHED ON ALL SLOPES OR UNTIL DIRECTED BY THE ENGINEER.

E. FINAL ITEMS

CLEAN ALL CATCH BASINS AND STORM MANHOLES OF ALL ACCUMULATED SEDIMENT AS DIRECTED BY THE ENGINEER.

EROSION AND SEDIMENT CONTROL NARRATIVE FOR: NEW LONDON TURNPIKE SIDEWALKS & REHABILITATION MONTVILLE, CONNECTICUT

F. FINAL ITEMS

CLEAN ALL CATCH BASINS AND STORM MANHOLES OF ALL ACCUMULATED SEDIMENT AS DIRECTED BY THE ENGINEER.

G. CONSTRUCTION EQUIPMENT AND MACHINERY

FOR CONSTRUCTION ACTIVITIES, TYPICAL EQUIPMENT IS ANTICIPATED TO INCLUDE A COLD PLANER (MILLING MACHINE), ASPHALT PAVER, STEEL DRUM ROLLER, DUMP TRUCKS, EXCAVATORS, SKID STEER LOADERS, CONCRETE TRANSIT MIXERS, GUARDRAIL POST DRIVERS, DOZER DERRICK TRUCKS, AND TRUCK-MOUNTED ATTENUATORS (TMAS). ADDITIONAL SUPPORT EQUIPMENT AND HAND TOOLS MAY BE UTILIZED AS NECESSARY TO COMPLETE THE WORK IN ACCORDANCE WITH PROJECT REQUIREMENTS AND APPROVED EROSION AND SEDIMENT CONTROL MEASURES.

H. CONTINGENCY PLANS FOR FAILED EROSION AND SEDIMENTATION CONTROL MEASURES

FAILED EROSION AND SEDIMENTATION CONTROL MEASURES WILL BE EVALUATED ON A CASE BY CASE BASIS BY THE ENGINEER AND APPROPRIATE MEASURES TAKEN. THESE MEASURES MAY INCLUDE CLEANING AND/OR REPLACEMENT OF DEFECTIVE FACILITIES OR INSTALLATION OF NEW OR SUPPLEMENTAL FACILITIES.

I. CONSTRUCTION TIMING AND PHASING (TENTATIVE)

THE PROJECT IS ANTICIPATED TO BEGIN IN LATE SPRING 2026 AND EXTEND FOR APPROXIMATELY 10-12 WEEKS; SUBJECT TO WEATHER AND COORDINATION WITH UTILITIES. WORK WILL BE CONDUCTED IN TWO MAIN PHASES TO MAINTAIN SAFE TRAFFIC OPERATIONS AND MINIMIZE COMMUNITY IMPACTS:

PHASE 1:

HALF-WIDTH ROADWAY CLOSURE; MILLING AND ASPHALT OVERLAY OF ONE LANE; EXCAVATION AND SUBGRADE PREPARATION FOR NEW 5' SIDEWALKS; PARTIAL SIDEWALK CONCRETE PLACEMENT; GUARDRAIL AND UTILITY ADJUSTMENTS WITHIN THIS SECTION. DURATION: ~4-6 WEEKS.

PHASE 2:

REMAINING LANE AND SIDEWALK AREAS; ASPHALT OVERLAY; SIDEWALK FORMWORK, CONCRETE PLACEMENT, AND FINISHING; FINAL GUARDRAIL AND UTILITY RELOCATION. DURATION: ~4-6 WEEKS.

MAJOR OPERATIONS INCLUDE ROADWAY MILLING, ASPHALT OVERLAY, SIDEWALK GRADING AND CONCRETE WORK, GUARDRAIL AND UTILITY RELOCATION, AND FINAL SITE RESTORATION. CONCRETE SIDEWALKS WILL REQUIRE CURING TIME, AND ALL WORK WILL FOLLOW APPROVED EROSION & SEDIMENT CONTROL MEASURES, TRAFFIC MANAGEMENT PLANS, AND APPLICABLE LOCAL, STATE, AND FEDERAL PERMITTING REQUIREMENTS.

NOTE: THE ABOVE SCHEDULE IS PRELIMINARY AND SUBJECT TO ADJUSTMENT BASED ON FINAL APPROVAL PROCESSES, UNFORESEEN SITE CONDITIONS, WEATHER, OR OTHER FACTORS BEYOND THE CONTROL OF THE CONTRACTOR OR PROJECT TEAM.

J. DESIGN CRITERIA

THE FOLLOWING DESIGN REFERENCES WERE FOLLOWED FOR THE PREPARATION OF STORM DRAINAGE DESIGN AND EROSION AND SEDIMENT CONTROL PLANS:

1. CONNECTICUT DOT DRAINAGE MANUAL
2. CONNECTICUT STORMWATER QUALITY MANUAL
3. SCS GUIDELINE FOR SOIL EROSION AND SEDIMENT CONTROL

SEDIMENTATION CONTROL FENCING HAVE BEEN DESIGNED IN ACCORDANCE WITH THE LATEST CONNECTICUT GUIDELINES FOR SOIL EROSION AND SEDIMENT CONTROL.

D. PERMITS AND REGULATORY APPROVALS

THE PROJECT MAY REQUIRE APPROVALS AND PERMITS FROM THE FOLLOWING AGENCIES, AS APPLICABLE:

- LOCAL TRANSPORTATION CAPITAL IMPROVEMENT PROGRAM (LTCIP),
- CONNECTICUT DEPARTMENT OF TRANSPORTATION (CTDOT),
- CITY OF NORWICH INLAND WETLANDS AND WATERCOURSES COMMISSION,
- TOWN OF MONTVILLE INLAND WETLANDS AND WATERCOURSES COMMISSION.

ANY ADDITIONAL PERMITS NECESSARY TO COMPLETE ROADWAY REPAVING WITHIN OR ADJACENT TO WETLAND AREAS WILL BE OBTAINED PRIOR TO CONSTRUCTION. ALL WORK SHALL COMPLY WITH CONDITIONS OUTLINED IN THESE APPROVALS, AS UPDATED IN THE EROSION AND SEDIMENT CONTROL NARRATIVE.

E. CONSTRUCTION DETAILS

CONSTRUCTION DETAILS FOR THE PROPOSED PROJECT ARE PRESENTED ON THE DETAIL SHEETS.

F. INSTALLATION PROCEDURES

THE INSTALLATION PROCEDURES FOR STORMWATER MANAGEMENT FACILITIES AND EROSION AND SEDIMENTATION CONTROL MEASURES ARE PRESENTED IN THE PROJECTS TECHNICAL SPECIFICATIONS FOR DRAINAGE, EXCAVATION, FILLING AND GRADING, AND SEDIMENTATION AND EROSION CONTROL. ADDITIONAL INSTALLATION PROCEDURES ARE SHOWN ON THE CONSTRUCTION DETAILS BOTH VISUALLY AND BY USE OF CONSTRUCTION NOTES.

G. OPERATION AND MAINTENANCE

1. DURING CONSTRUCTION

BEST MANAGEMENT PRACTICES, SHALL BE UTILIZED TO CONTROL STORM WATER DISCHARGES AND TO PREVENT EROSION AND SEDIMENTATION AND TO OTHERWISE PREVENT POLLUTION OF WETLANDS OR WATERCOURSES. FOR INFORMATION AND TECHNICAL ASSISTANCE, CONTACT THE TOWN ENGINEER, THE PERMITEE SHALL IMMEDIATELY INFORM THE ENGINEERING DEPARTMENT OF ANY PROBLEMS INVOLVING WETLANDS OR WATERCOURSES WHICH HAVE DEVELOPED IN THE COURSE OF, OR WHICH ARE CAUSED BY, THE AUTHORIZED WORK.

NO EQUIPMENT OR MATERIAL INCLUDING WITHOUT LIMITATION, FILL, CONSTRUCTION MATERIALS, OR DEBRIS, SHALL BE DEPOSITED, PLACED, OR STORED IN ANY WETLAND OR WATERCOURSE ON OR OFF SITE.
TIMELY IMPLEMENTATION AND MAINTENANCE OF SEDIMENT AND EROSION CONTROL MEASURES ARE REQUIRED. ALL SEDIMENT AND EROSION CONTROL MEASURES MUST BE MAINTAINED UNTIL ALL DISTURBED AREAS ARE STABILIZED.

A PRE-CONSTRUCTION MEETING SHALL BE HELD PRIOR TO THE COMMENCEMENT OF ANY CONSTRUCTION ACTIVITIES ON THE SITE WITH THE CONTRACTOR, AND TOWN STAFF.

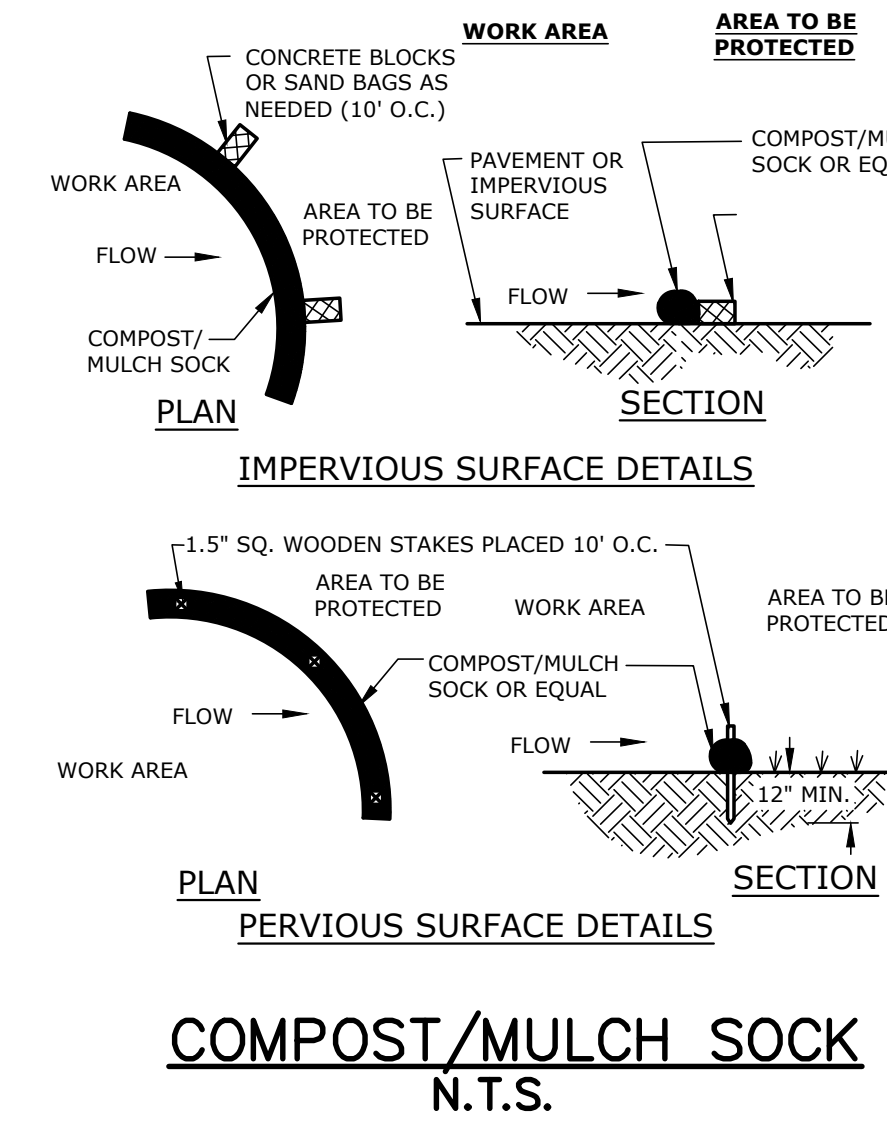
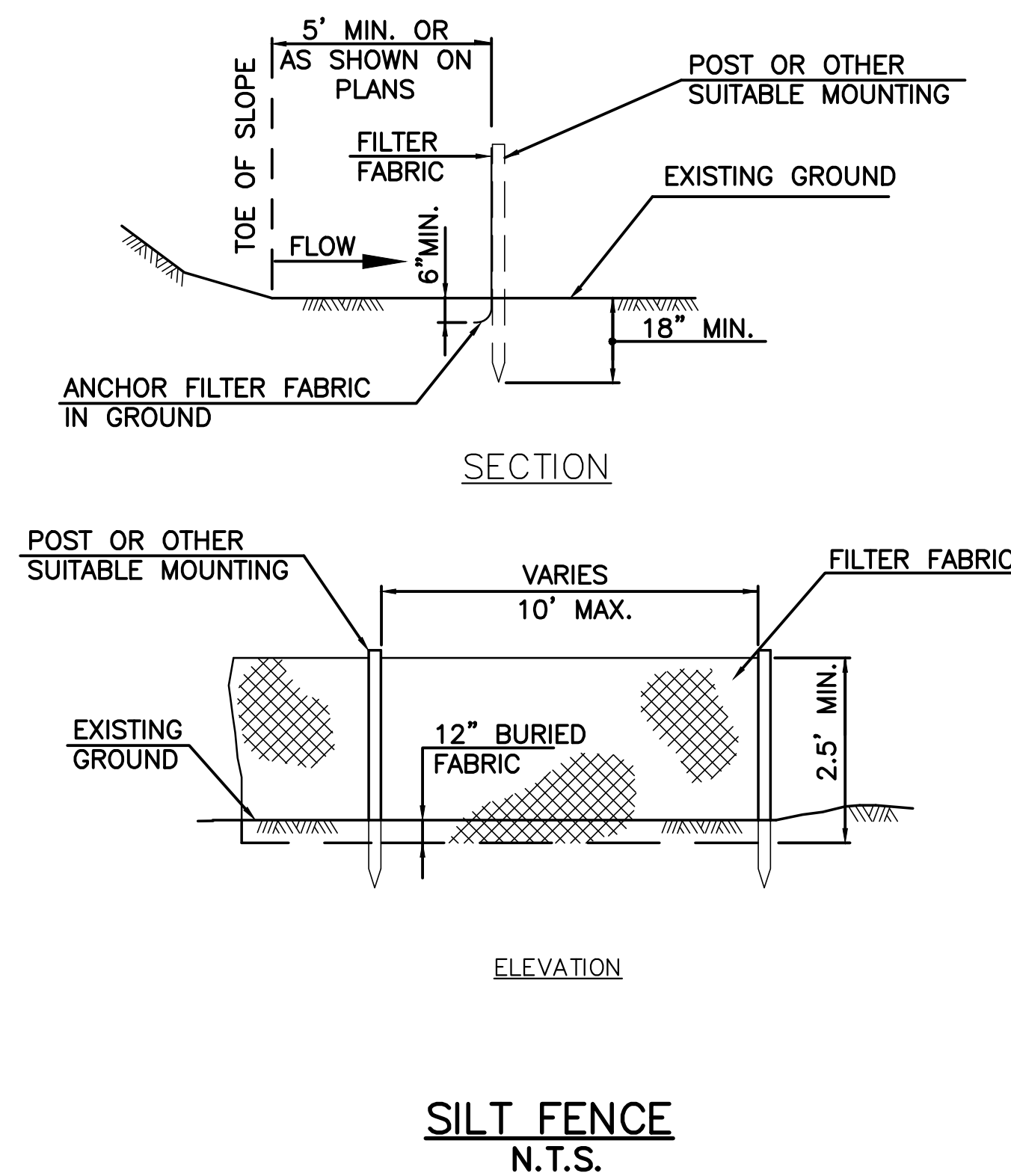
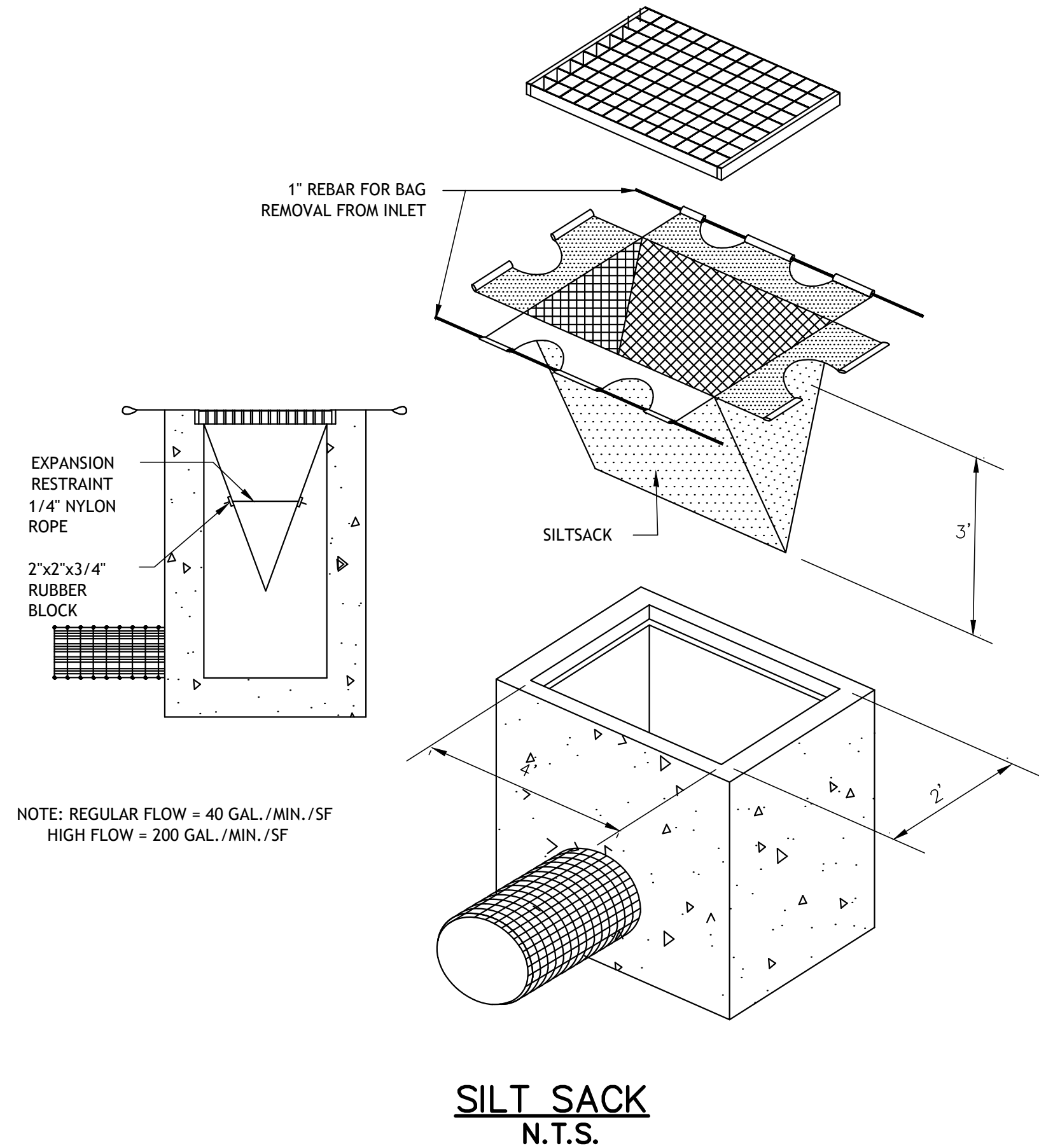
AS CONTAINED IN THE SEDIMENTATION AND EROSION CONTROL SPECIFICATIONS, OPERATIONS AND MAINTENANCE DURING CONSTRUCTION WILL CONSIST OF PERIODIC REPLACEMENT AND/OR CLEANING OF CLOGGED HAY BALES, SILT FENCE AND CONSTRUCTION ENTRANCE AT NO ADDITIONAL COST TO THE OWNER. ANY TEMPORARY SEDIMENTATION BASINS WILL BE CLEANED OF ACCUMULATED SEDIMENT WHEN THE DEPTH OF ACCUMULATED SEDIMENT EXCEEDS 8". ALL DRAINAGE STRUCTURES SHALL BE INSPECTED ON DAILY BASIS AND ANY NECESSARY CORRECTIVE ACTION TAKEN.

2. EMERGENCY CONTACT AND RESPONSE

IN THE EVENT OF AN EMERGENCY, INCLUDING SEVERE FLOODING, HEAVY RAINFALL, OR OTHER ENVIRONMENTAL ISSUES RELATED TO CONSTRUCTION ACTIVITIES, THE DESIGNATED RESPONSIBLE PARTY FOR RESPONSE AND COORDINATION IS:

JEFF DEWEY, P.E.
CITY ENGINEER
NORWICH DEPARTMENT OF PUBLIC WORKS
50 CLINTON AVENUE
NORWICH, CONNECTICUT 06360
PHONE: (860) 823-3798 EXT. 3404

ALL ON-SITE PERSONNEL SHALL IMMEDIATELY NOTIFY THE ABOVE CONTACT IN THE EVENT OF AN EMERGENCY TO ENSURE TIMELY MITIGATION OF IMPACTS AND COMPLIANCE WITH APPROVED EROSION AND SEDIMENT CONTROL MEASURES.



NO.	DATE	DESCRIPTION	REVISIONS
02	07/14/2026	STAFF COMMENTS/SOIL SCIENTIST	
01	07/06/2026	EROSION CONTROL MEASURES	

FREEMAN COMPANIES, LLC
LAND DEVELOPMENT | INSURANCE DESIGN | CONSTRUCTION SERVICES
 DBE | DAS | MBE | GWKSC CERTIFIED
 CIVIL | GEOTECHNICAL
 SURVEY | ENVIRONMENTAL

36 JOHN STREET
 HARTFORD, CT 06106
 WWW.FREEMANCO.COM
 TEL: (860) 251-9550
 TOLL FREE: (800) 664-5141
 FAX: (860) 886-7161

ELEVATE YOUR EXPECTATIONS

NEW LONDON TURNPIKE SIDEWALKS & ROAD REHABILITATION

NORWICH, CONNECTICUT

DESIGNED: C.S.
 DRAFTED: C.S.
 CHECKED: Y.L.
 APPROVED: P.A.R.
 SCALE: N.T.S.
 FC PROJECT NO.: 2022-0107
 DATE: 12/09/2025
 CAD: HW_MSH_2022_0107_UTIL

EROSION & SEDIMENT CONTROL DETAILS

DWG NO.: MDS-1

SHEET NO.: 7 of 7