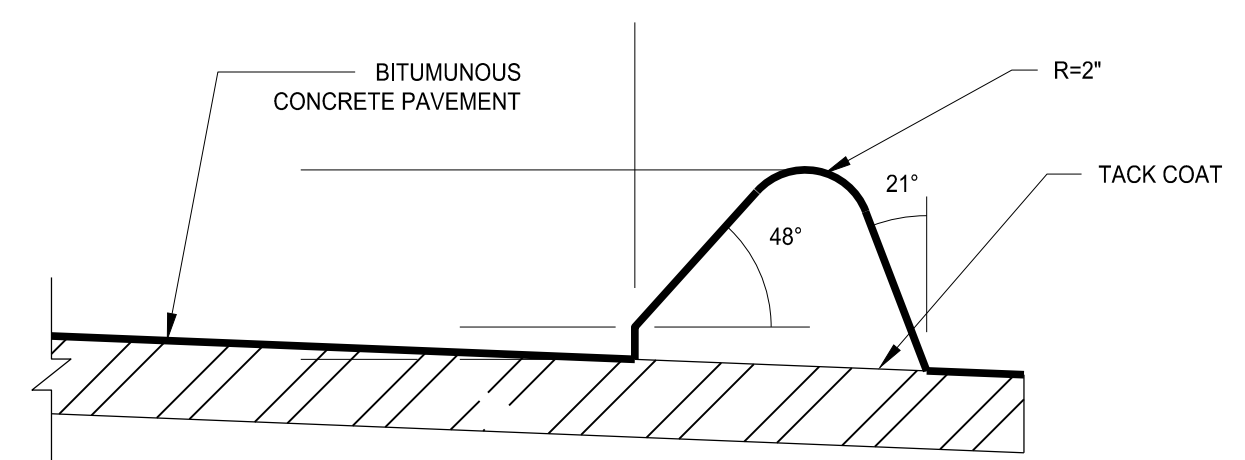


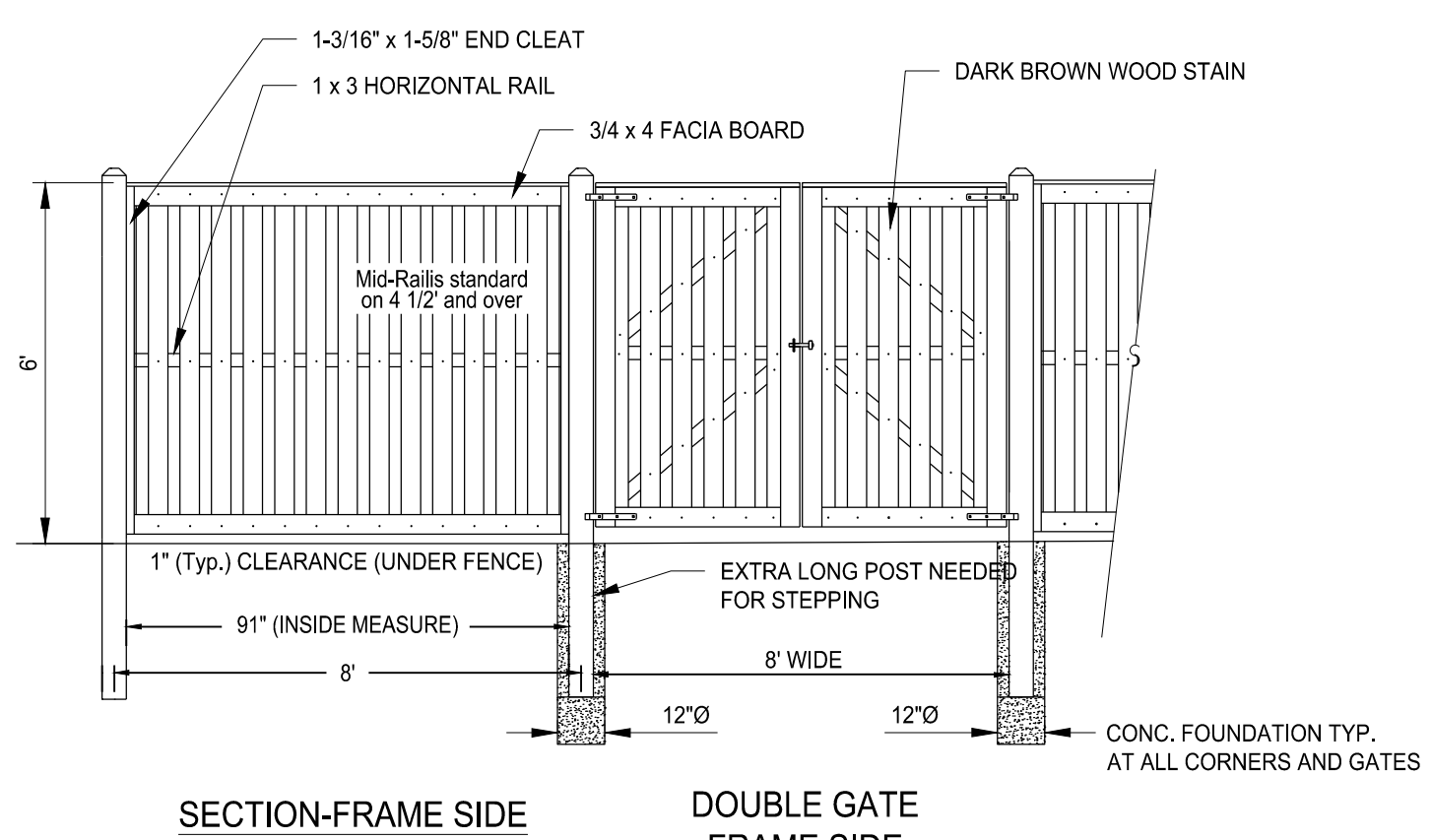
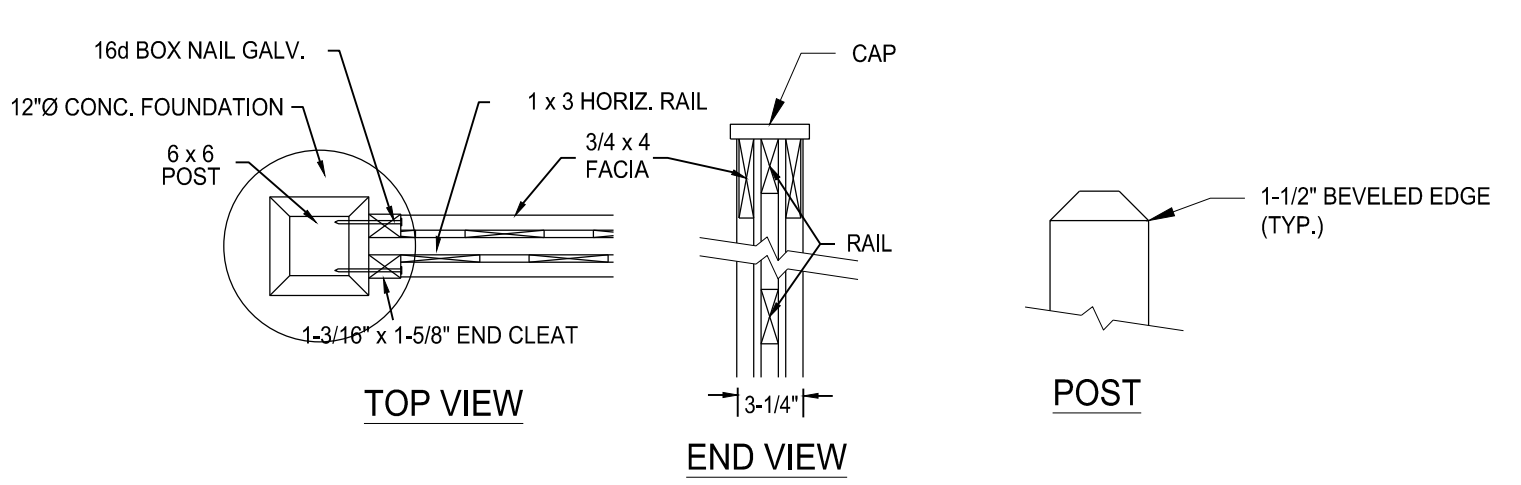
PAVING DETAILS

SCALE: NTS



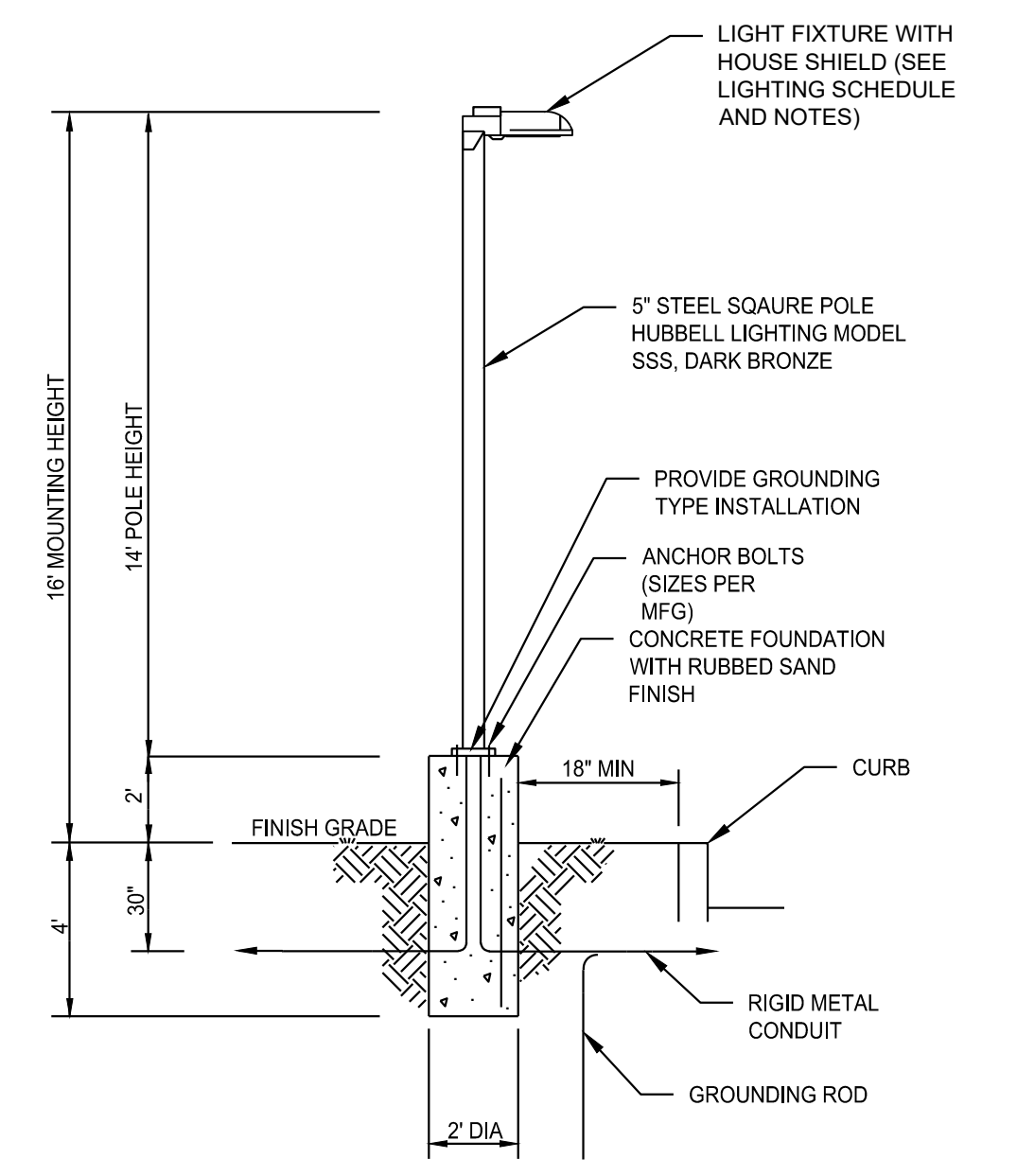
EXTRUDED BITUMINOUS CONCRETE LIP CURBING DETAIL

SCALE: NTS
DETAIL PER TOWN OF MONROE DPW STANDARD DRAWINGS



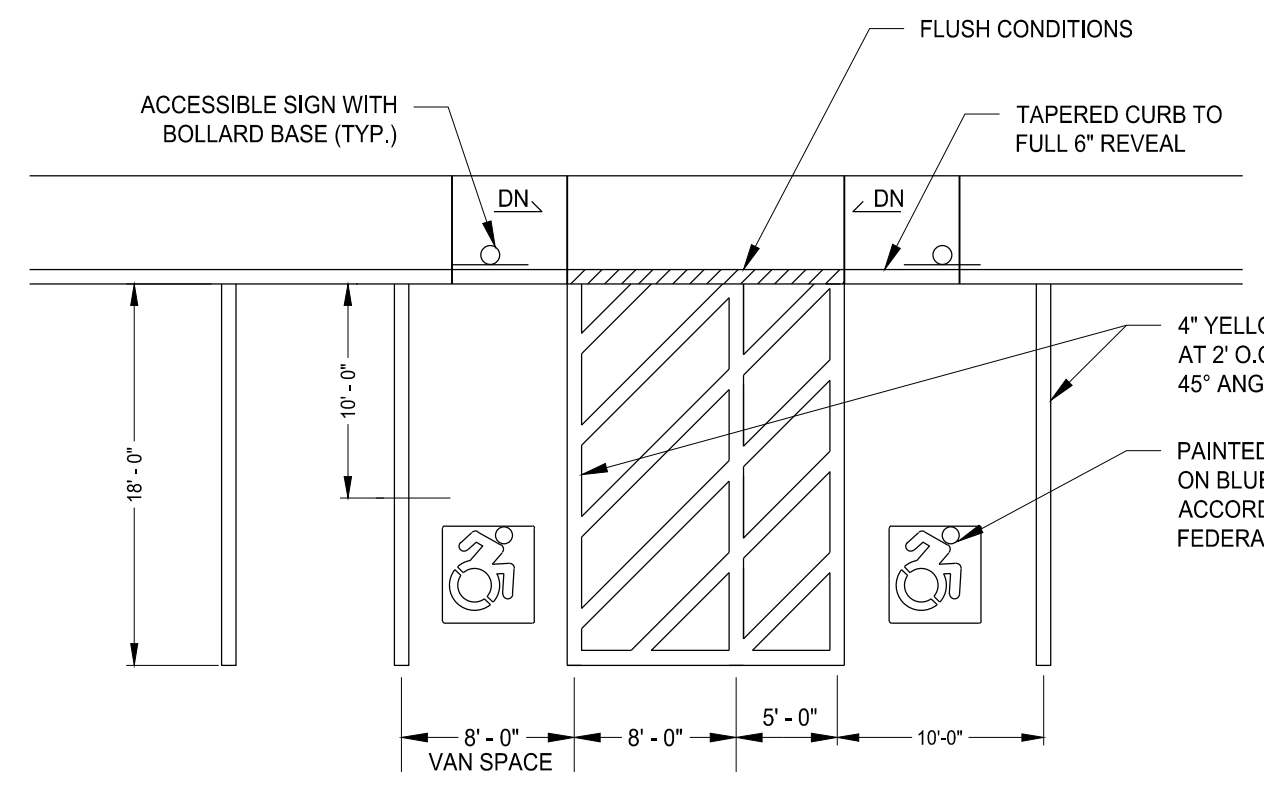
DUMPSTER PAD ENCLOSURE - BOARD ON BOARD FENCE

SCALE: NTS



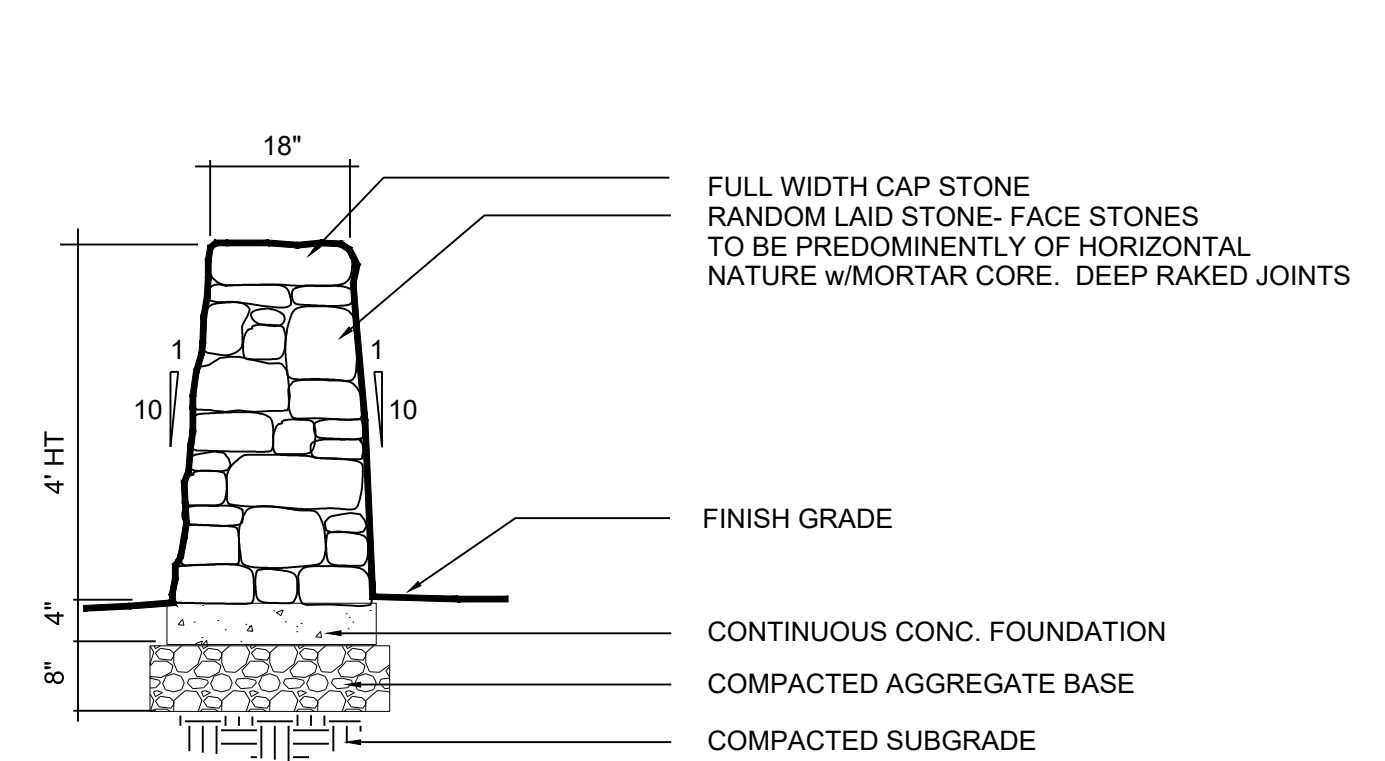
PROPOSED LIGHT POLE - P1

SCALE: NTS



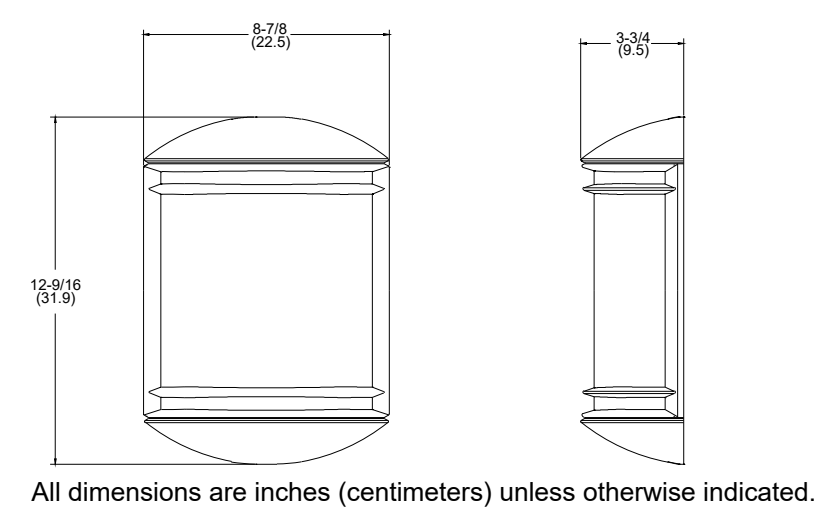
TYPICAL ACCESSIBLE PARKING SPACE DETAIL

SCALE: NTS



DRYSET STONE WALL

SCALE: NOT TO SCALE



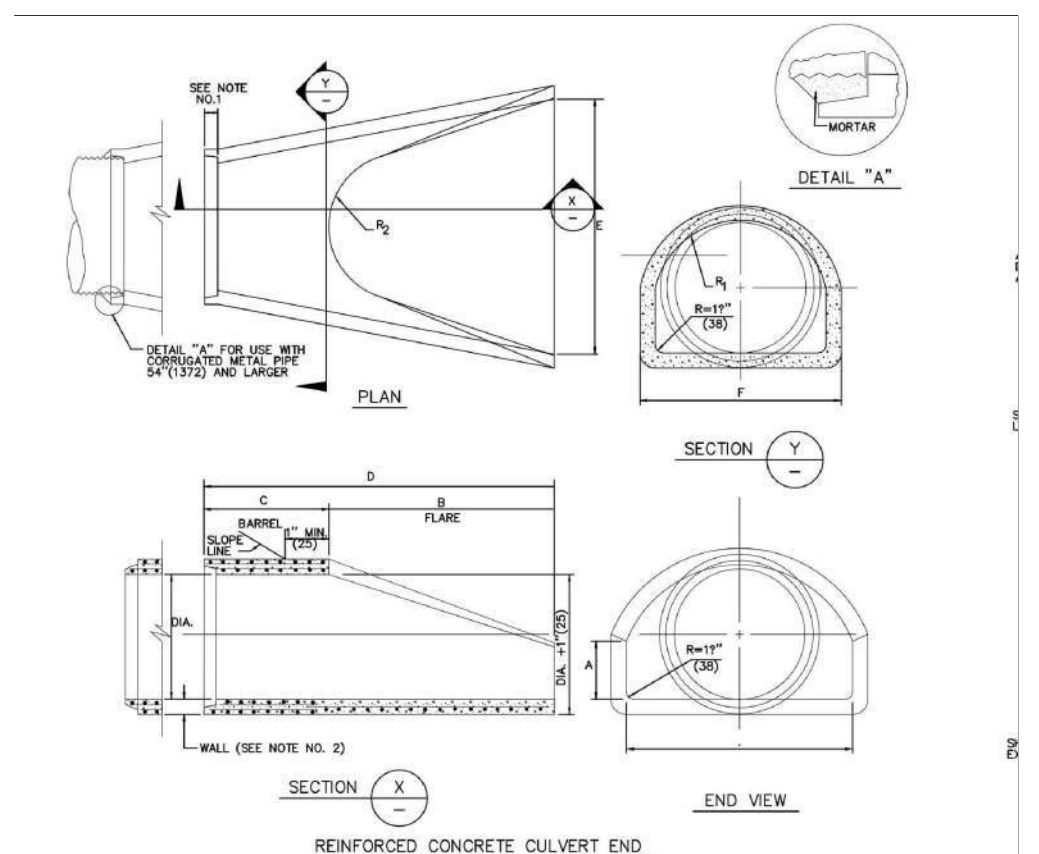
PROPOSED ACCENT LIGHT - AL1

LITHONIA ACCENT, MODEL OLC59WH POWDER COATED ALUMINUM, WHITE
SCALE: NTS

NOTES
1. SEE SITE PLAN FOR ACCESSIBLE SPACE LOCATIONS
2. PROVIDE 2 COATS OF PAINT ON ALL SURFACES.

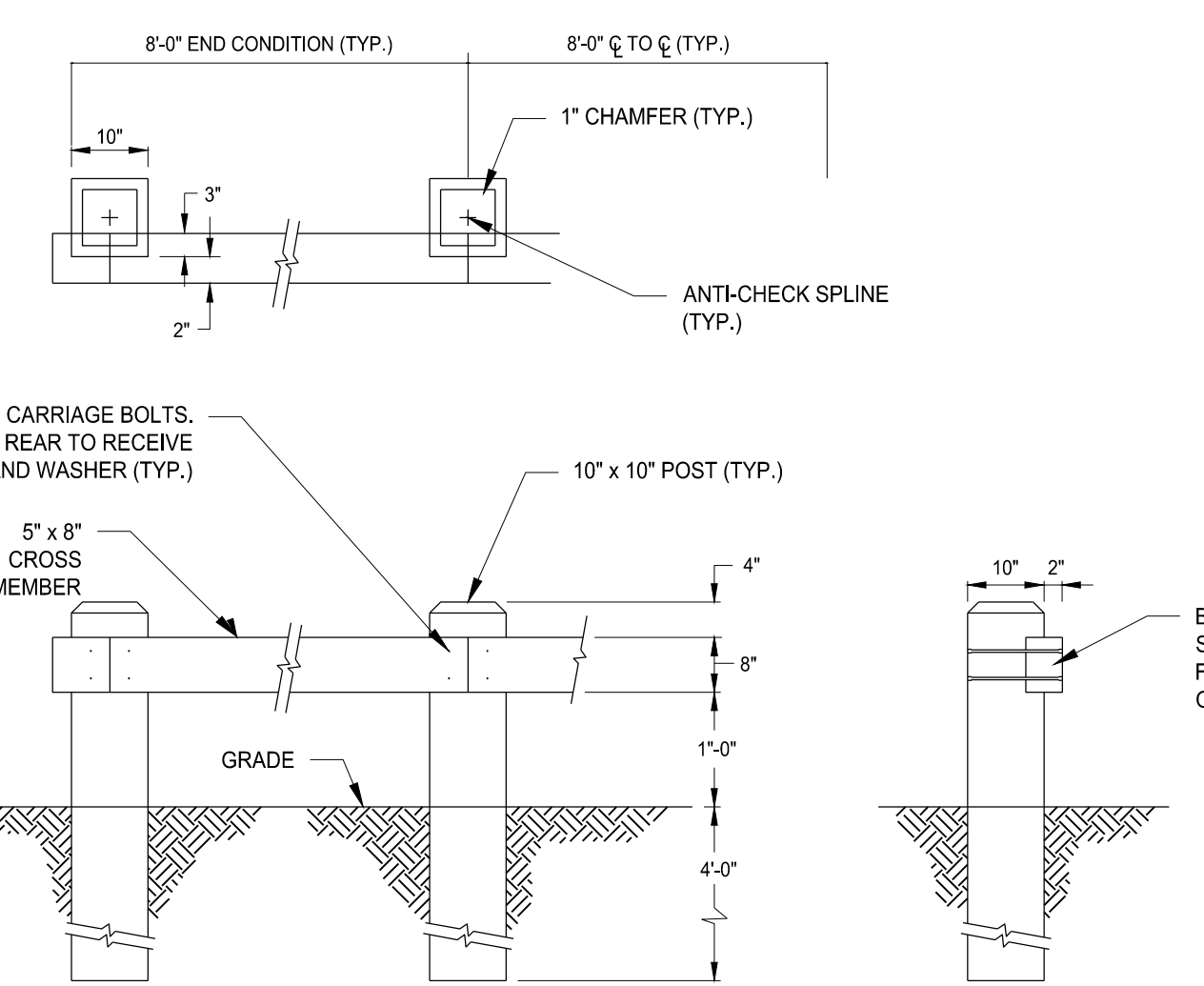
STONE WALL w/MORTAR CORE

SCALE: NOT TO SCALE



S.A.K.	DIMENSIONS FOR REINFORCED CONCRETE CULVERT END						REINFORCEMENT	
	A	B	C	D	E	F	#1	#2
10' (3000)	10' (3000)	10' (3000)	10' (3000)	10' (3000)	10' (3000)	10' (3000)	4	4
12' (3600)	12' (3600)	12' (3600)	12' (3600)	12' (3600)	12' (3600)	12' (3600)	4	4
14' (4200)	14' (4200)	14' (4200)	14' (4200)	14' (4200)	14' (4200)	14' (4200)	4	4
16' (4800)	16' (4800)	16' (4800)	16' (4800)	16' (4800)	16' (4800)	16' (4800)	4	4
18' (5400)	18' (5400)	18' (5400)	18' (5400)	18' (5400)	18' (5400)	18' (5400)	4	4
20' (6000)	20' (6000)	20' (6000)	20' (6000)	20' (6000)	20' (6000)	20' (6000)	4	4
22' (6600)	22' (6600)	22' (6600)	22' (6600)	22' (6600)	22' (6600)	22' (6600)	4	4
24' (7200)	24' (7200)	24' (7200)	24' (7200)	24' (7200)	24' (7200)	24' (7200)	4	4
26' (7800)	26' (7800)	26' (7800)	26' (7800)	26' (7800)	26' (7800)	26' (7800)	4	4
28' (8400)	28' (8400)	28' (8400)	28' (8400)	28' (8400)	28' (8400)	28' (8400)	4	4
30' (9000)	30' (9000)	30' (9000)	30' (9000)	30' (9000)	30' (9000)	30' (9000)	4	4

NOTE: ROUTINELY MAINTAIN ALL DRAINAGE SYSTEM COMPONENTS AS SPECIFIED IN "APPENDIX O" OPERATIONS AND MAINTENANCE PLAN" IN THE ENGINEERING REPORT FOR THE LIFE OF THE DRAINAGE SYSTEM



TIMBER GUIDE RAIL

SCALE: NTS

NOTES
1. ALL TIMBER TO BE PRESSURE TREATED CCA=0.40 PCF SOUTHERN YELLOW PINE

APPROVED BY THE MONTVILLE INLAND WETLAND COMMISSION
CHAIRMAN _____ DATE _____
APPROVED BY THE MONTVILLE PLANNING AND ZONING COMMISSION
CHAIRMAN _____ DATE _____
EXPIRATION DATE _____
SEC PLAN APPROVAL DATE _____

THIS DRAWING IS THE PROPERTY OF THE ENGINEER. IT HAS BEEN SPECIFICALLY PREPARED FOR THE OWNER FOR THIS PROJECT AT THIS SITE AND IS NOT TO BE USED FOR ANY OTHER PURPOSE, LOCATION OR OWNER WITHOUT WRITTEN CONSENT OF THE ENGINEER.

Fuller Engineering & Land Surveying
525 JOHN STREET BRIDGEPORT, CT. 06604
Office (203) 333-9465
fax (203) 336-1769
e-mail info@FullerSurveyors

WILTON'S WAY
22 UNIT CONDOMINIUM DEVELOPMENT
245 NORWICH-NEW LONDON ROAD (RT 32)
MONTVILLE, CONNECTICUT
PREPARED FOR
WESTERN GROUP, LLC

Job Number:
FE22-1700

Job Start Date:
1/4/22

Conditions of Approval 01/06/23
Conditions of Approval Revised 01/13/23
Handicap Unit 09/12/23
San Sewer/Water 03/14/24
Eversource Easement 08/05/24
Eversource Comments 09/24/24
Siteplan Modification 02/10/26

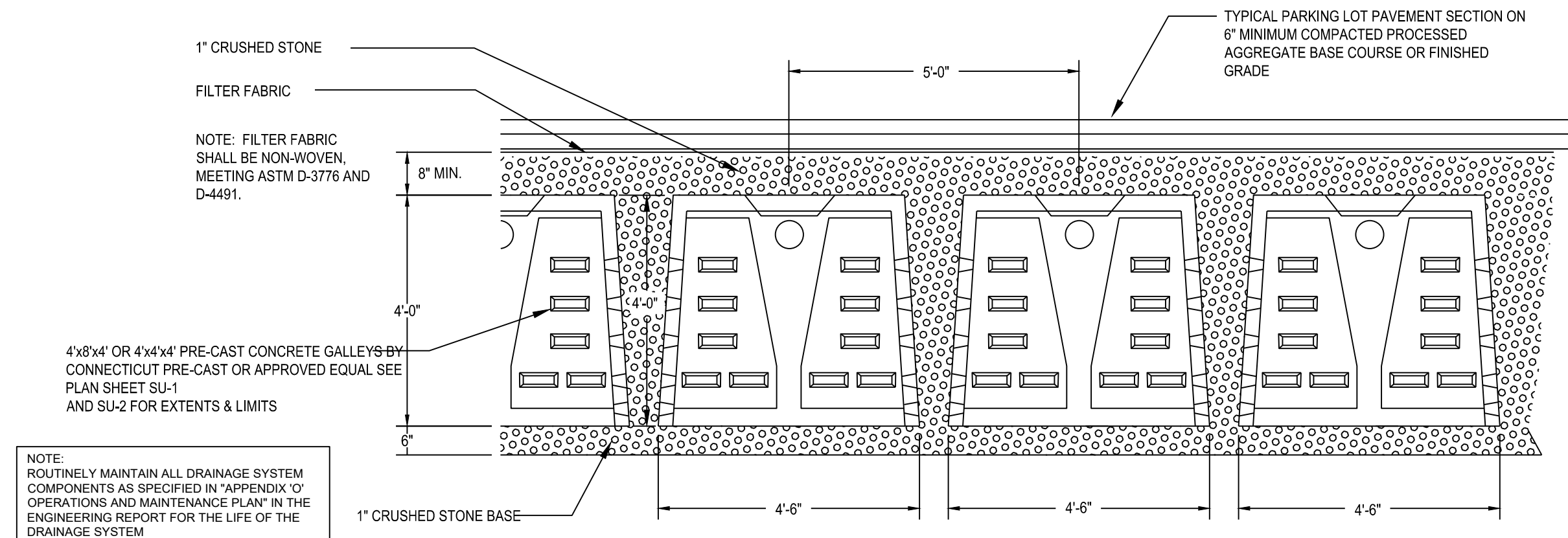
Drawn By: Checked By:
D.R.R. J.E.Q.

Sheet Title:
DETAIL SHEET

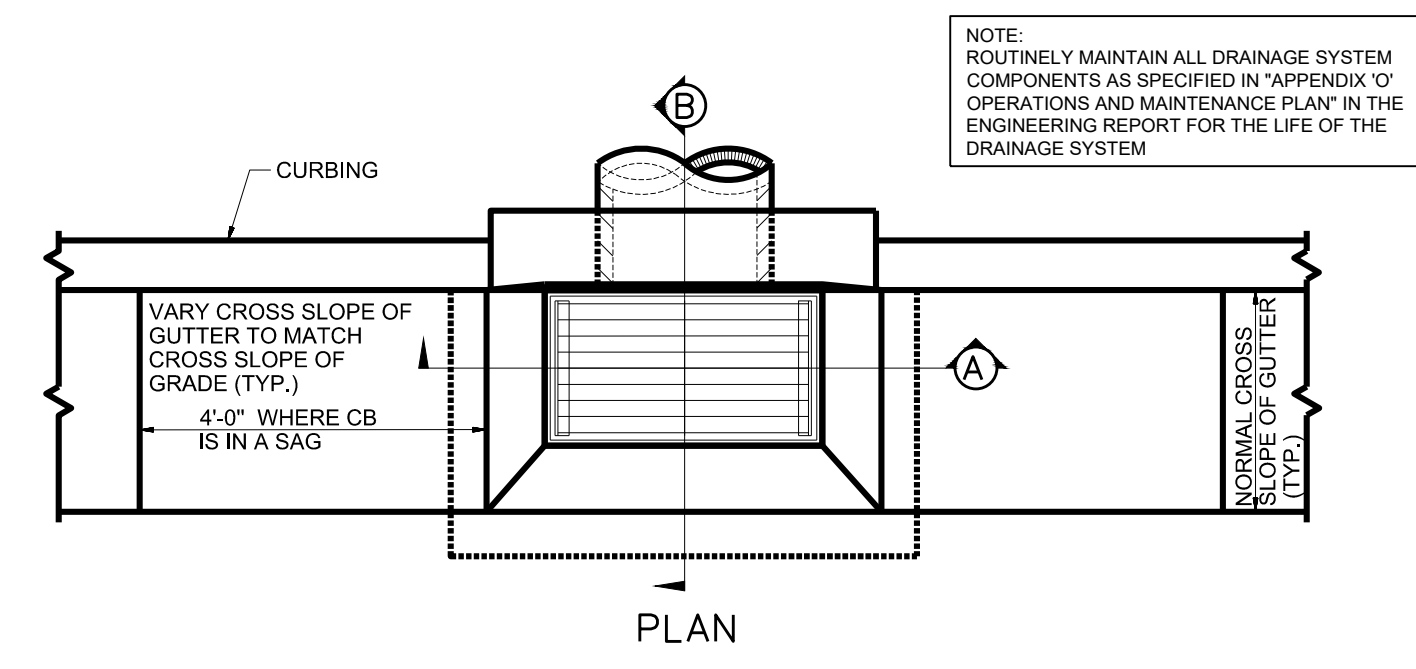
Scale:

Sheet Number:

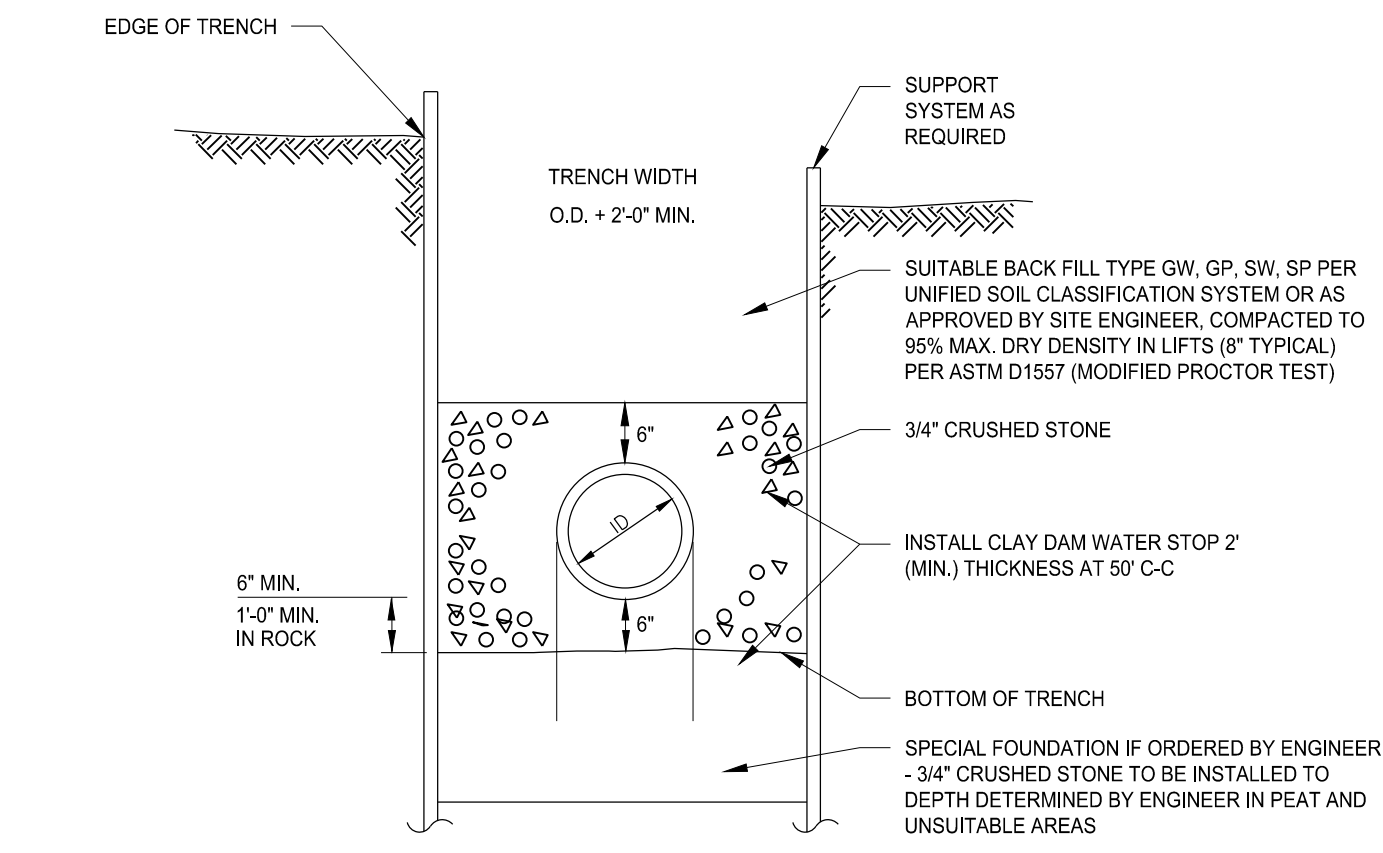
C-6.1



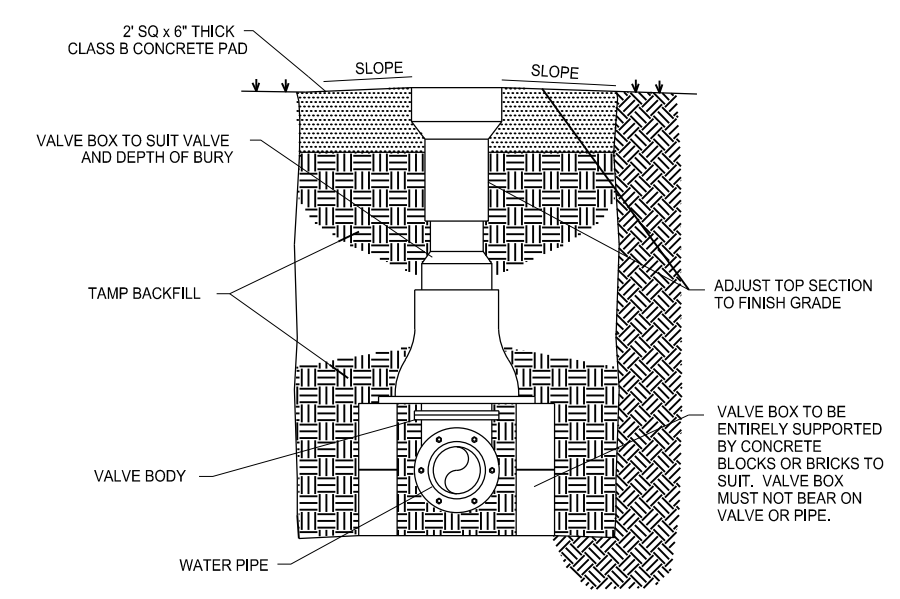
**SUBSURFACE STORM WATER RETENTION
4'x4' PRE-CAST LEACHING GALLERY FIELD DETAIL**
NOT TO SCALE



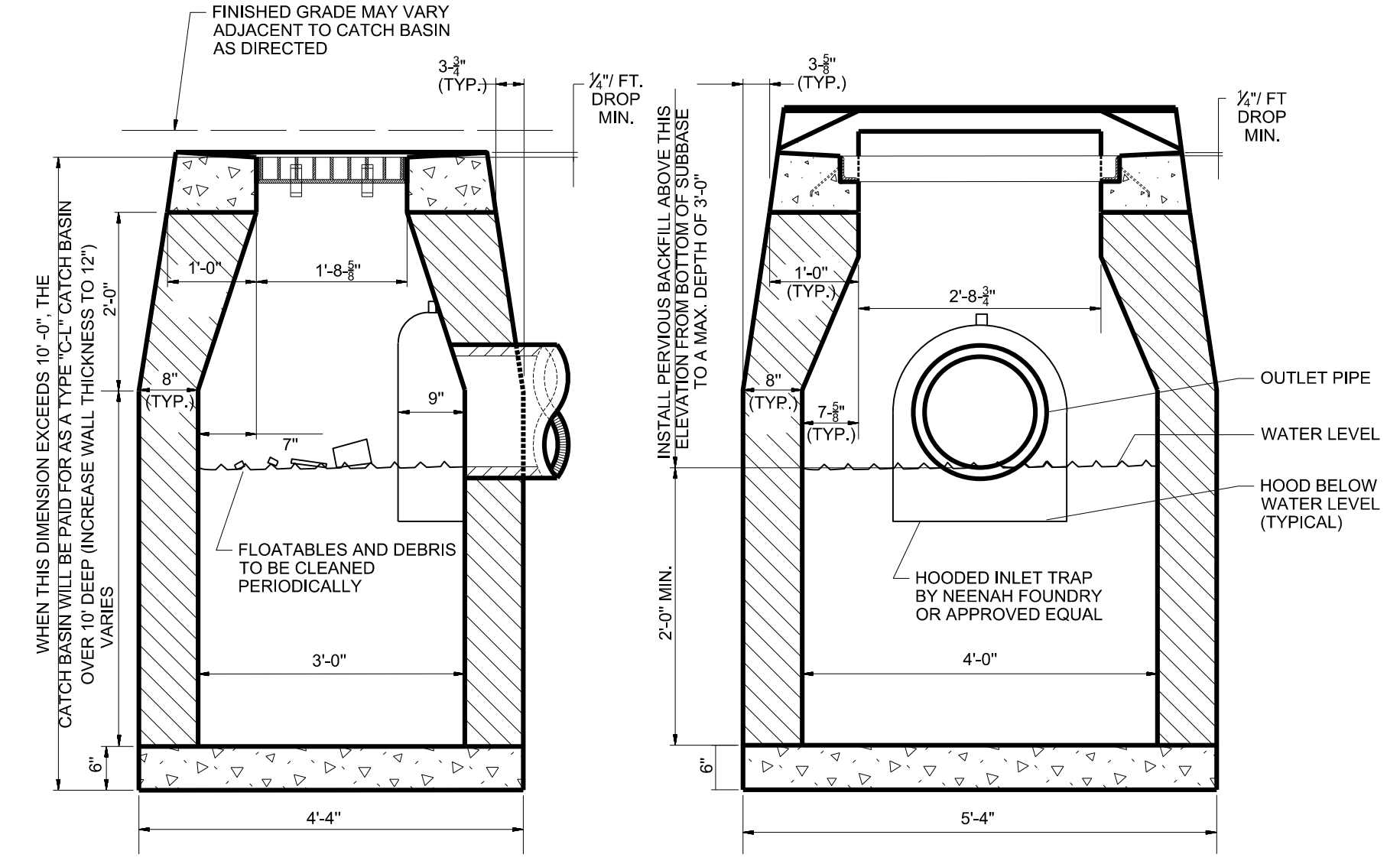
NOTE: CONCRETE COMPRESSIVE STRENGTH = 4000psi @ 28 DAYS



TYPICAL SANITARY SEWER TRENCH SECTION
SCALE: NTS

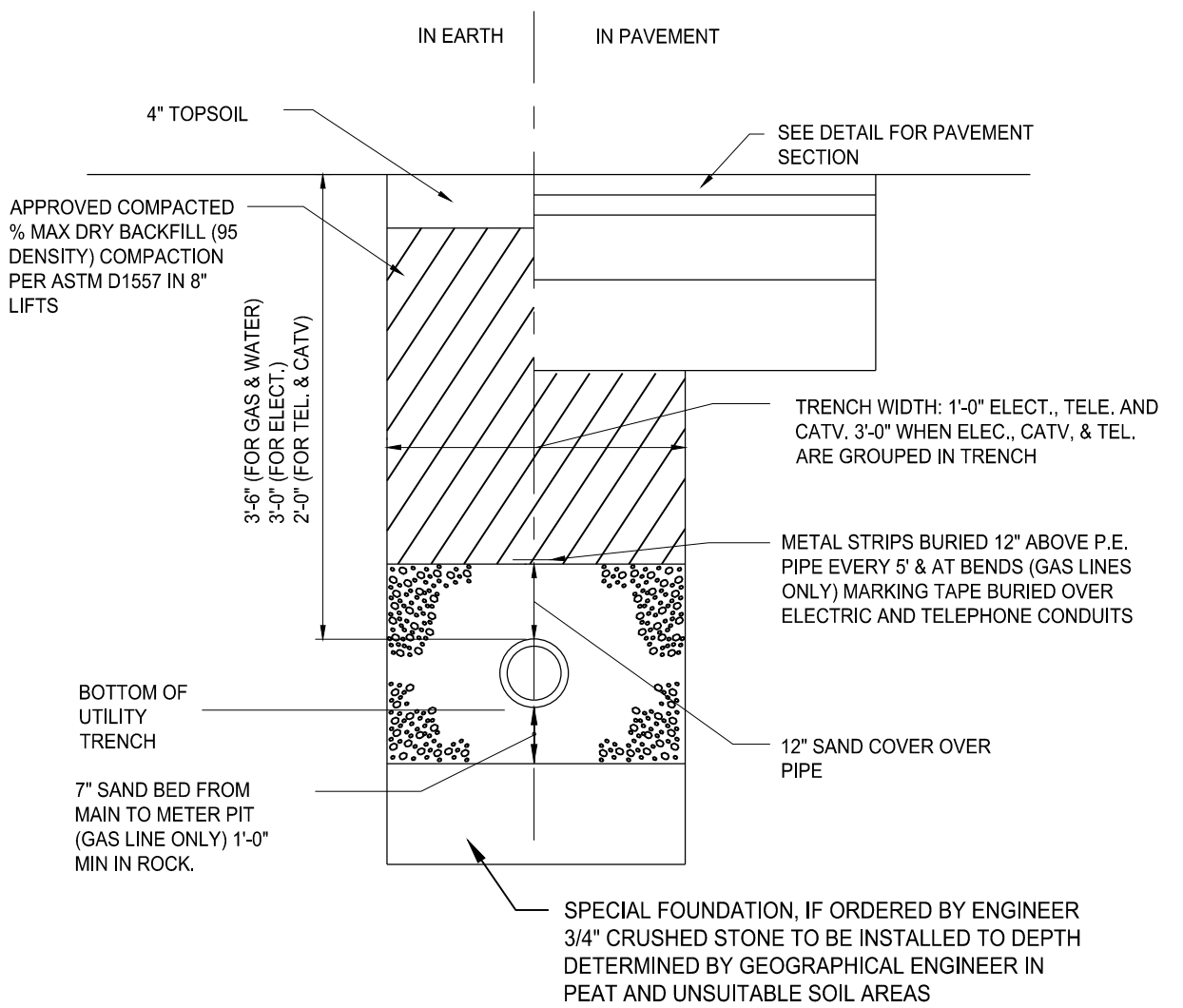


GATE VALVE DETAIL
SCALE: NTS

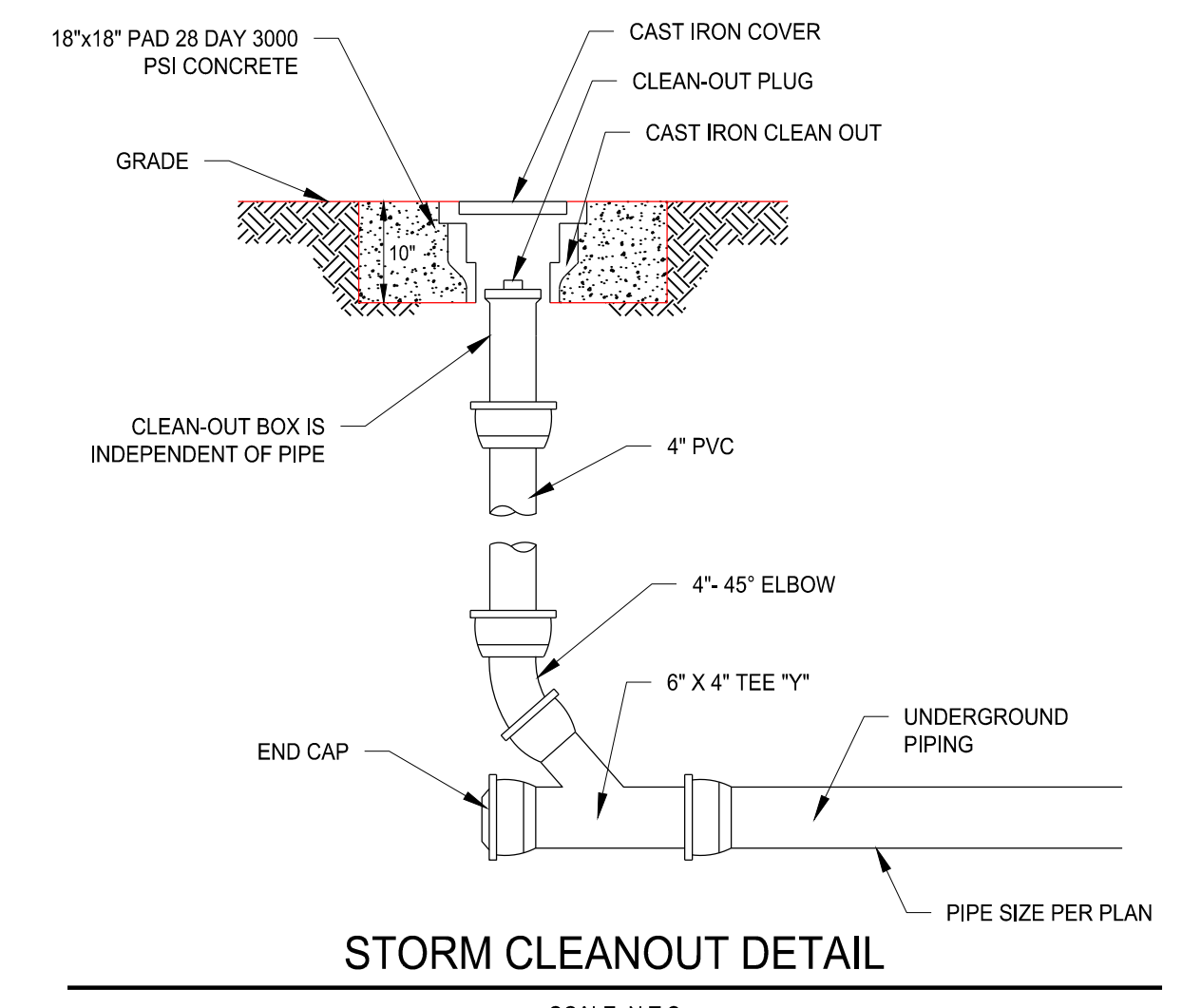


TYPE "C-L" CATCH BASIN WITH HOODED INLET TRAP

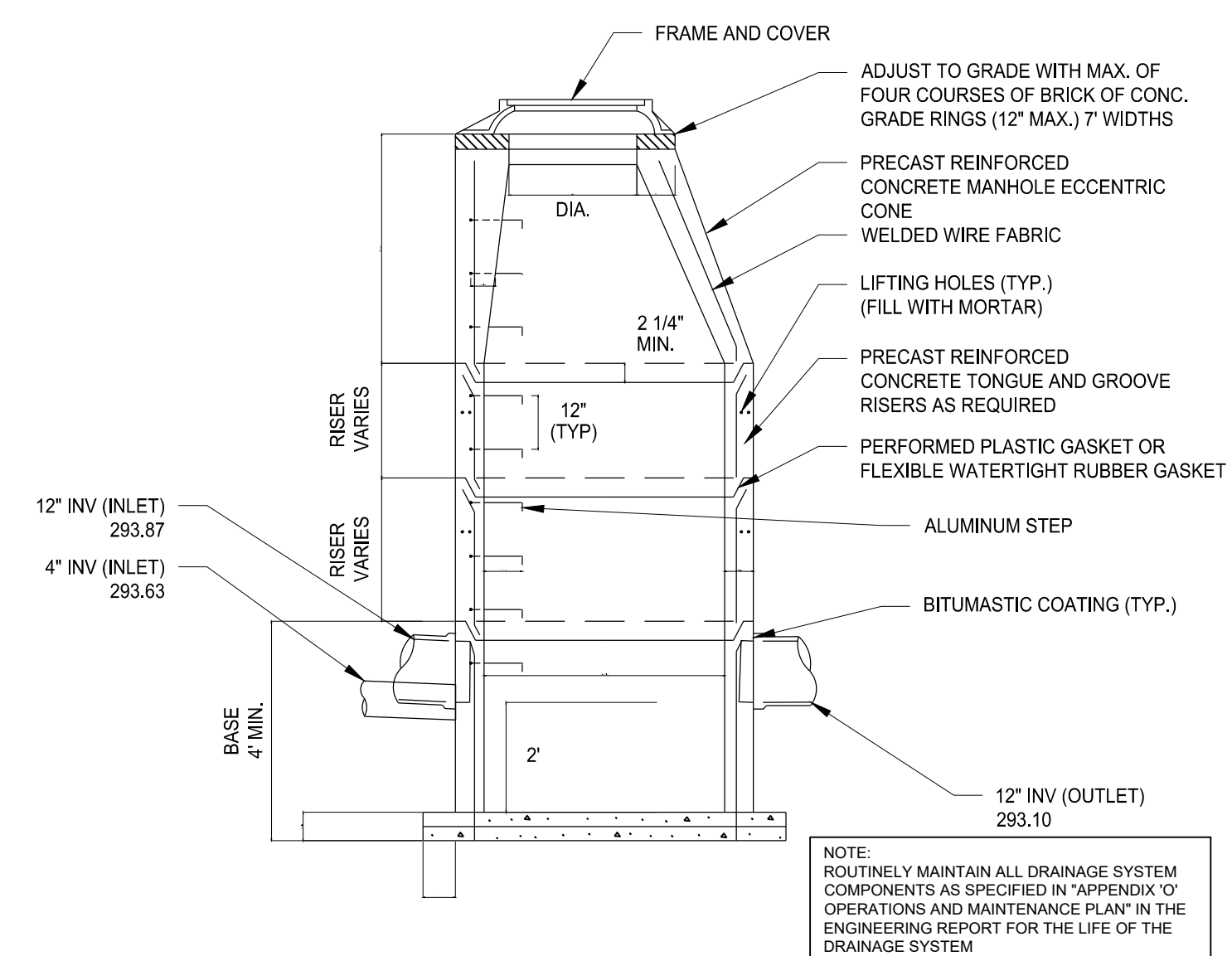
NOTE: ROUTINELY MAINTAIN ALL DRAINAGE SYSTEM COMPONENTS AS SPECIFIED IN "APPENDIX 'O' OPERATIONS AND MAINTENANCE PLAN" IN THE ENGINEERING REPORT FOR THE LIFE OF THE DRAINAGE SYSTEM.



TYPICAL UTILITY TRENCH DETAIL
SCALE: NTS



STORM CLEANOUT DETAIL
SCALE: N.T.S



NOTES:
1. 5' OR 6' DIA. PRECAST BASES MAY BE USED WHEN REQUIRED DUE TO SIZE OR NUMBER OF PIPES AT THE MANHOLE. PRECAST REDUCERS WILL BE PLACED ABOVE THE 5' & 6' BASES AS DIRECTED BY THE ENGINEER.
2. WALL THICKNESS TO INCREASE 1" FOR EACH 1" OF INSIDE DIAMETER INCREASE.
3. WHEN INLET SEWER INVERT TO OUTLET SEWER INVERT ELEVATION EXCEEDS 24" USE DROP CONNECTION.

PRECAST STORM MANHOLE
SCALE: NTS

APPROVED BY THE MONTVILLE INLAND WETLAND COMMISSION	
CHAIRMAN _____	DATE _____
APPROVED BY THE MONTVILLE PLANNING AND ZONING COMMISSION	
CHAIRMAN _____	DATE _____
EXPIRATION DATE _____	
SEC PLAN APPROVAL DATE _____	

THIS DRAWING IS THE PROPERTY OF THE ENGINEER. IT HAS BEEN SPECIFICALLY PREPARED FOR THE OWNER FOR THIS PROJECT AT THIS SITE AND IS NOT TO BE USED FOR ANY OTHER PURPOSE, LOCATION, OR OWNER WITHOUT WRITTEN CONSENT OF THE ENGINEER.

FULLER ENGINEERING & LAND SURVEYING
525 JOHN STREET BRIDGEPORT, CT. 06604
Office (203) 336-9465
Fax (203) 336-1769
e-mail Info@FullerSurveyors

WILTON'S WAY
22 UNIT CONDOMINIUM DEVELOPMENT
245 NORWICH-NEW LONDON ROAD (RT 32)
MONTVILLE, CONNECTICUT
PREPARED FOR
WESTERY GROUP, LLC

Job Number:
FE22-1700

Job Start Date:
1/4/22

Conditions of Approval	01/06/23
Conditions of Approval Revised	01/13/23
Handicap Unit	09/12/23
San Sewer/Water	03/14/24
Eversource Easement	08/05/24
Eversource Comments	09/24/24
Siteplan Modification	02/10/26

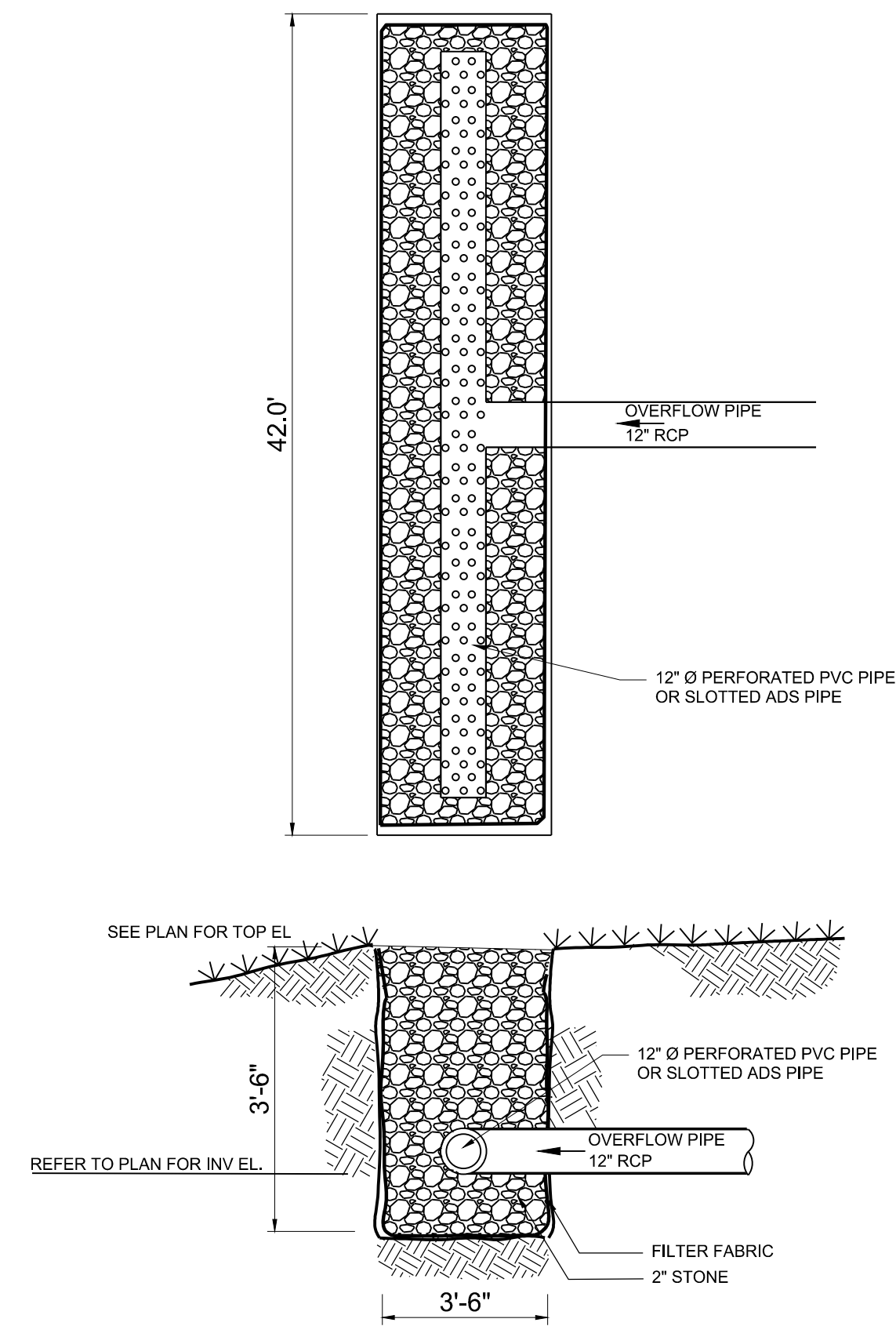
Drawn By: **Checked By:**
D.R.R. J.E.Q.

Sheet Title:
DETAIL SHEET

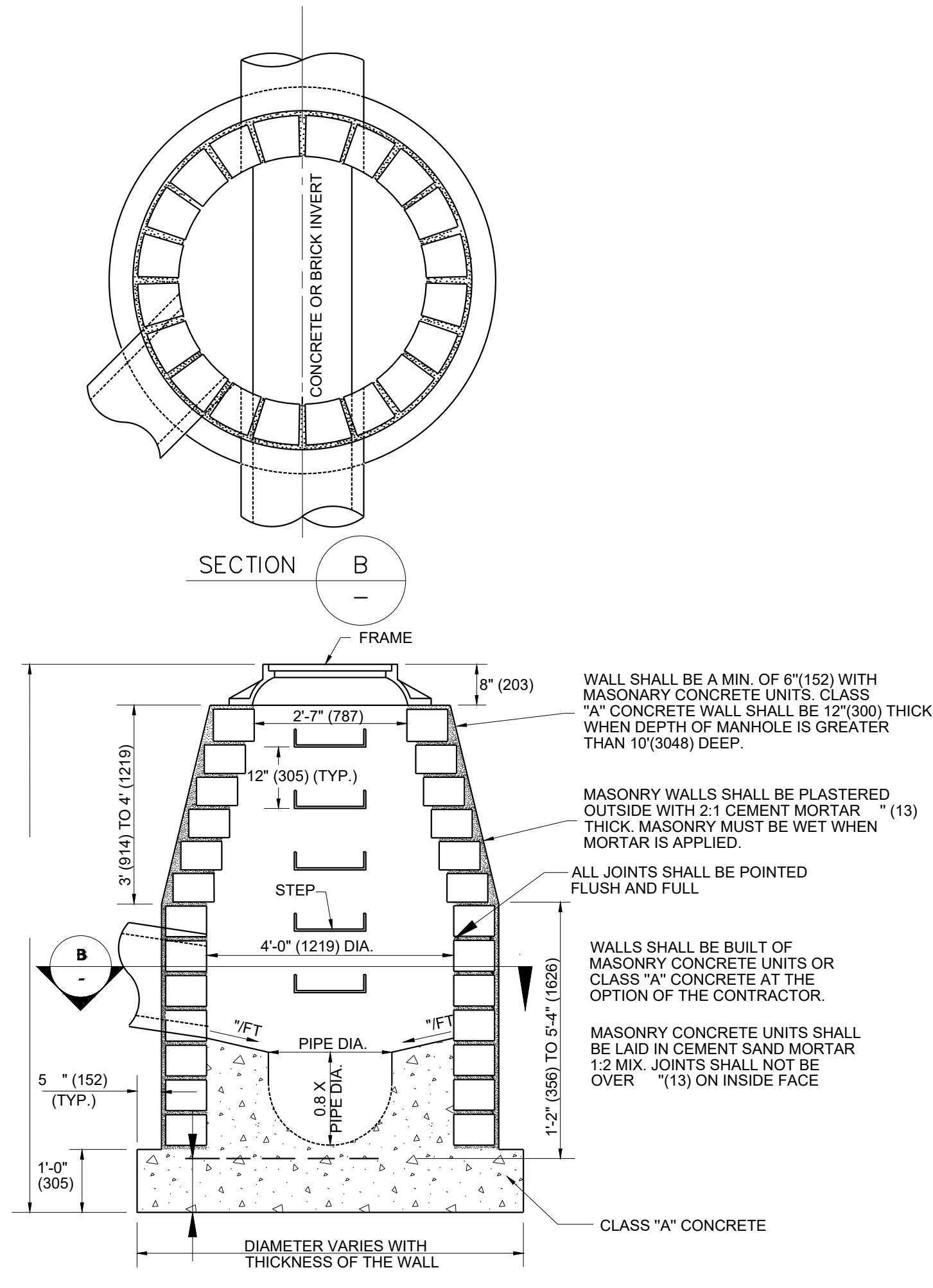
Scale:

Sheet Number:
C-6.2

C:\Users\CAD\Desktop\Projects\2023\23-01-101 FOX ARBENSON TERRACE\LOCATION.dwg
 2/9/2023 6:28 PM
 2/9/2023 6:28 PM



LEVEL SPREADER DETAIL
NOT TO SCALE



SANITARY MANHOLE
MASONRY CONCRETE UNIT
OR CLASS "A" CONCRETE

APPROVED BY THE MONTVILLE INLAND WETLAND COMMISSION	
CHAIRMAN _____	DATE _____
APPROVED BY THE MONTVILLE PLANNING AND ZONING COMMISSION	
CHAIRMAN _____	DATE _____
EXPIRATION DATE _____	
SEC PLAN APPROVAL DATE _____	

THIS DRAWING IS THE PROPERTY OF THE ENGINEER. IT HAS BEEN SPECIFICALLY PREPARED FOR THE OWNER FOR THIS PROJECT AT THIS SITE AND IS NOT TO BE USED FOR ANY OTHER PURPOSE, LOCATION OR OWNER WITHOUT WRITTEN CONSENT OF THE ENGINEER.

FULLER ENGINEERING & LAND SURVEYING
 525 JOHN STREET BRIDGEPORT, CT, 06604
 Office (203) 336-6465
 fax (203) 336-1769
 e-mail info@FullerSurveyors

WILTON'S WAY
22 UNIT CONDOMINIUM DEVELOPMENT
 245 NORWICH-NEW LONDON ROAD (RT 32)
 MONTVILLE, CONNECTICUT
 PREPARED FOR
WESTERN GROUP, LLC

Job Number:
FE22-1700

Job Start Date:
1/4/22

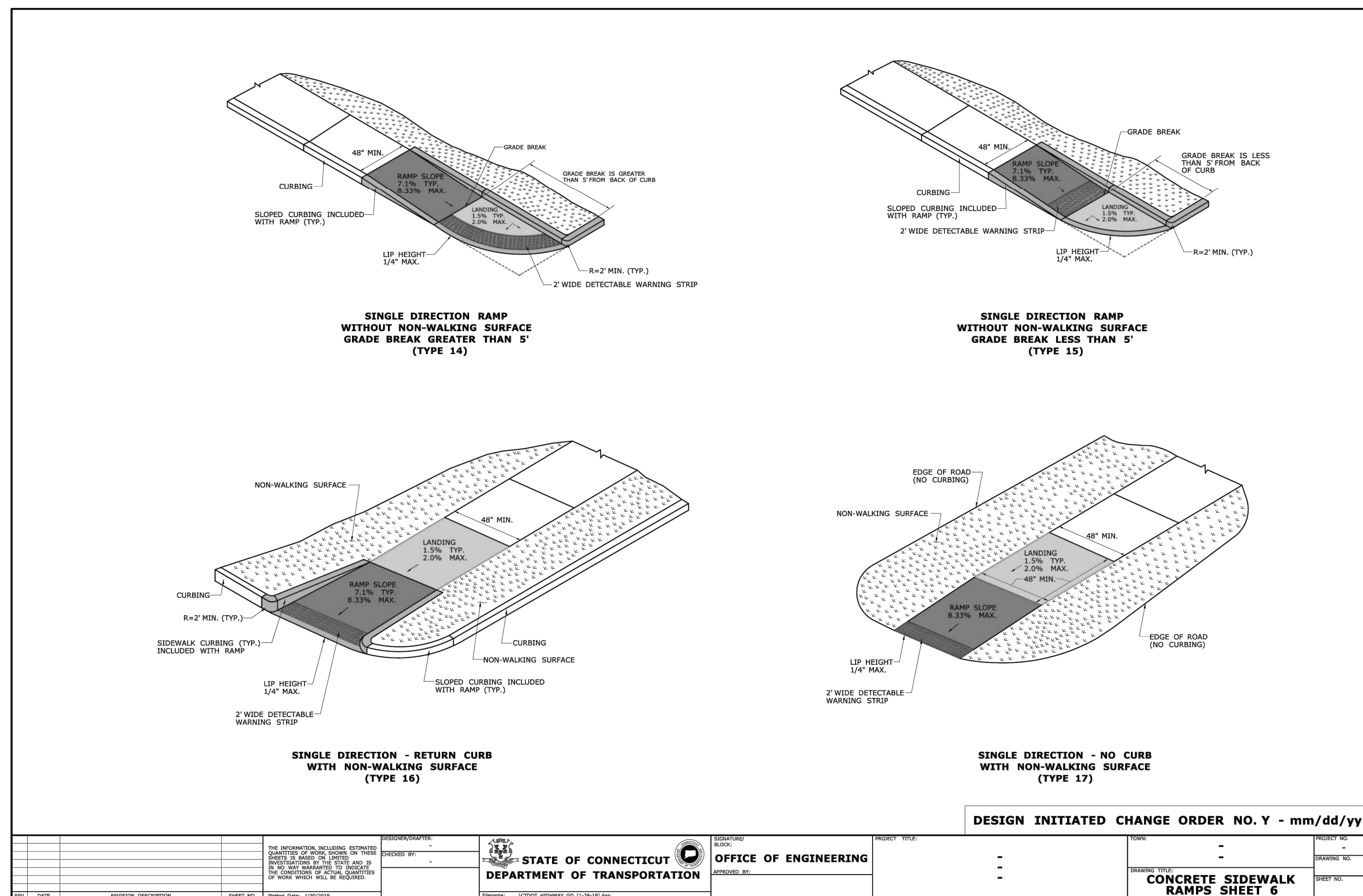
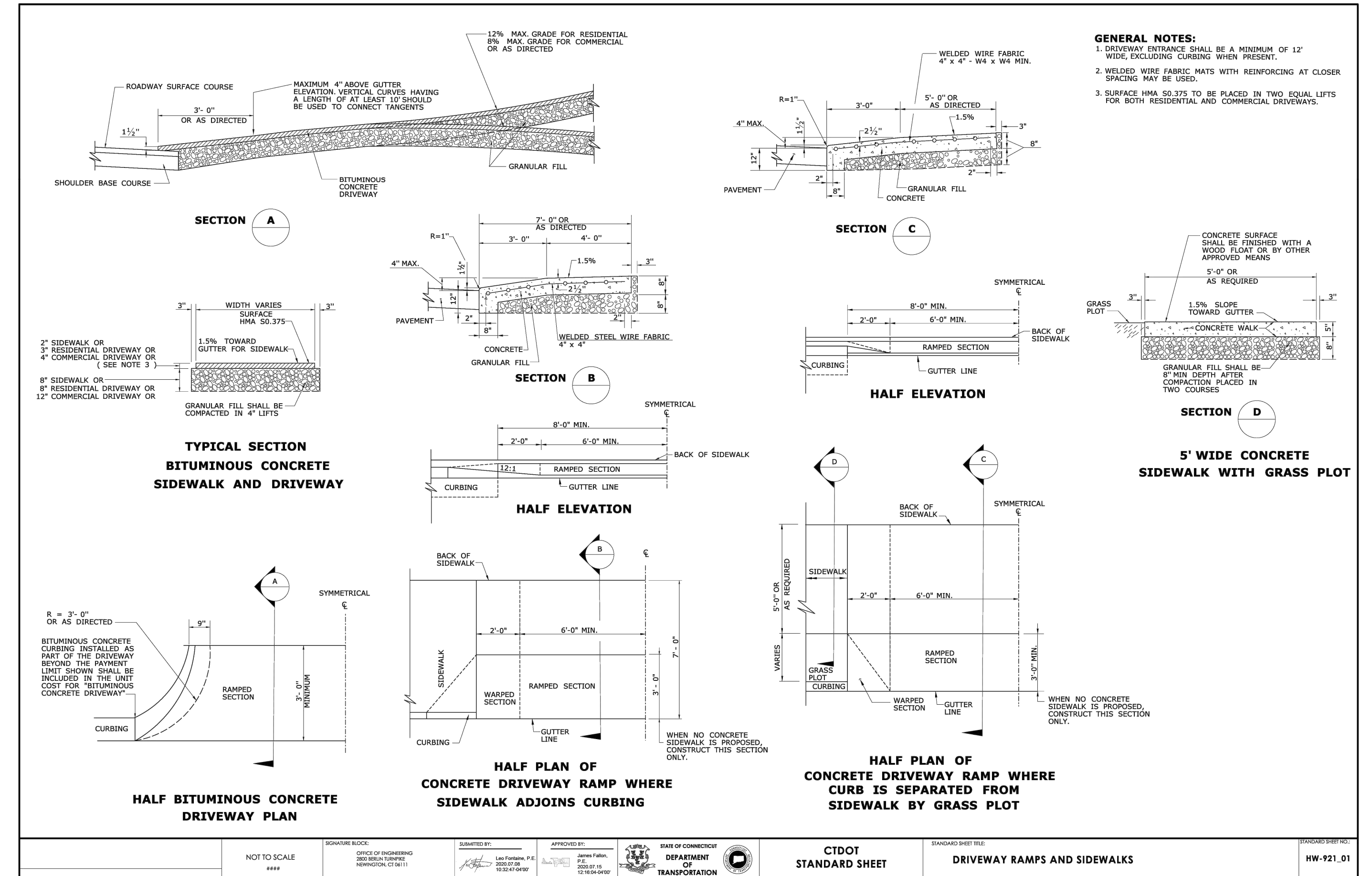
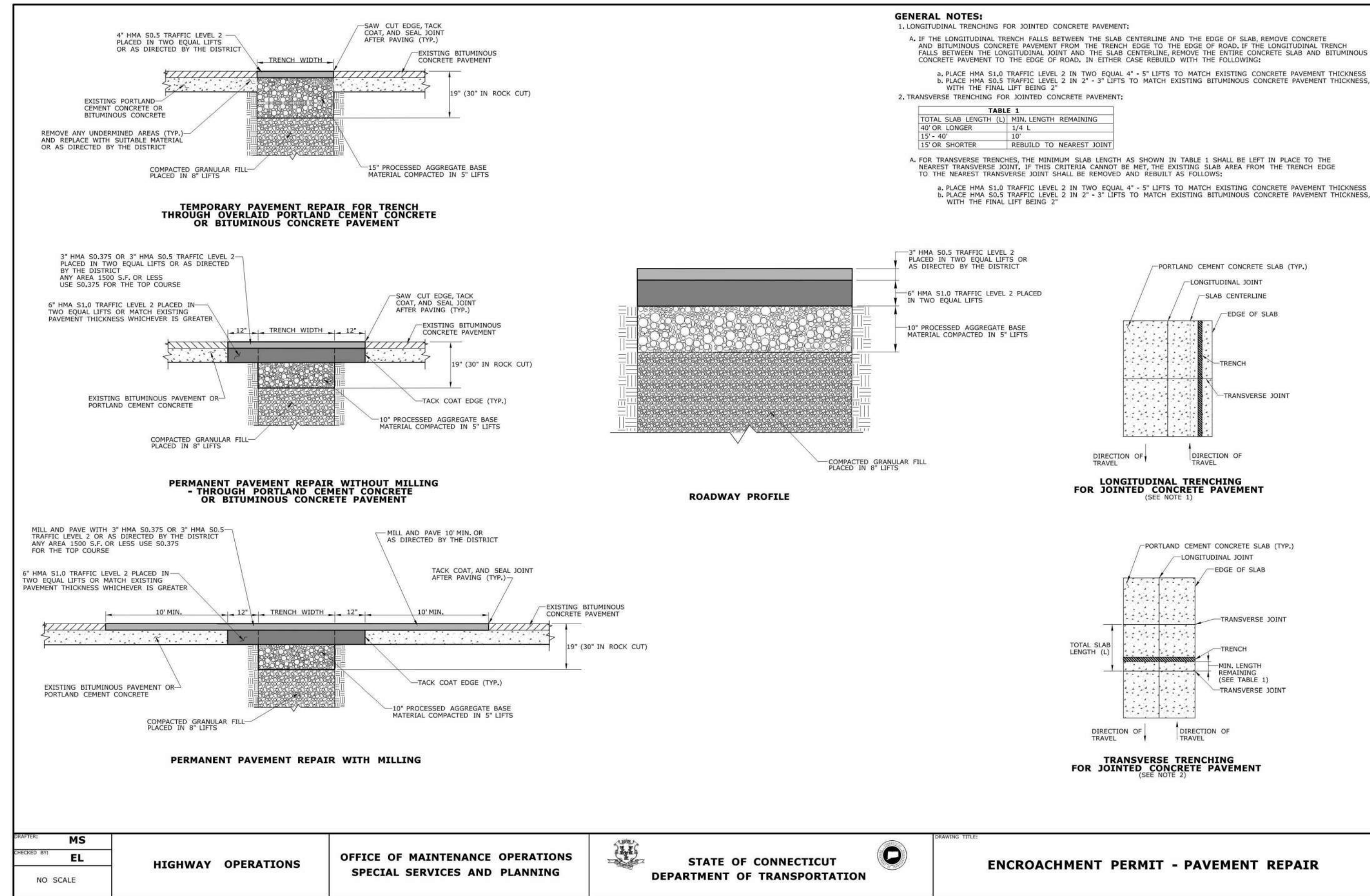
Conditions of Approval	01/06/23
Conditions of Approval Revised	01/13/23
Handicap Unit	09/12/23
San Sewer/Water	03/14/24
Eversource Easement	08/05/24
Eversource Comments	09/24/24
Siteplan Modification	02/10/25

Drawn By: D.R.R.
Checked By: J.E.Q.

Sheet Title:
DETAIL SHEET

Scale:

Sheet Number:
C-6.3



THIS DRAWING IS THE PROPERTY OF THE ENGINEER. IT HAS BEEN SPECIFICALLY PREPARED FOR THE OWNER FOR THIS PROJECT AT THIS SITE AND IS NOT TO BE USED FOR ANY OTHER PURPOSE. LOCATION OR OWNER WITHOUT WRITTEN CONSENT OF THE ENGINEER.

FULLER ENGINEERING & LAND SURVEYING

525 JOHN STREET BRIDGEPORT, CT. 06604
 OFFICE (203) 333-8468
 FAX (203) 336-1769
 e-mail info@FullerSurveyors.com

WILTON'S WAY

22 UNIT CONDOMINIUM DEVELOPMENT

245 NORWICH-NEW LONDON ROAD (RT 32)
 MONTVILLE, CONNECTICUT

PREPARED FOR
WESTERN GROUP, LLC

Job Number:
FE22-1700

Job Start Date:
1/4/22

Conditions of Approval	DATE
Conditions of Approval	01/06/23
Conditions of Approval Revised	01/13/23
Handicap Unit	09/12/23
San Sewer/Water	03/14/24
Eversource Easement	08/05/24
Eversource Comments	09/24/24
Siteplan Modification	02/10/26

Drawn By: **Checked By:**
 D.R.R. **J.E.Q.**

Sheet Title:
DETAIL SHEET CT-DOT

Scale:

Sheet Number:
C-6.4

C:\Users\CAD\Desktop\CTDOT\Engineering\Drawings\Tennis\2025 - FE13-101 - FullerSurvey - Data\2025.09.10 FE 13-101 FOX-BRENSON TERNIS LOCATION.dwg
 2/9/2026 6:28 PM