

KENNETH C. BALDWIN

One State Street
Hartford, CT 06103
Main (860) 275-8200
Fax (860) 275-8299
kbaldwin@rc.com
Direct (860) 275-8345

Also admitted in Massachusetts

February 2, 2026

Via Certificate of Mailing

Dennis Goderre, Director Land Use and Development
Town of Montville
310 Norwich-New London Turnpike
Uncasville, CT 06382

Re: Cellco Partnership d/b/a Verizon Wireless – Petition for Declaratory Ruling Filed with the Connecticut Siting Council for the Installation of a Wireless Telecommunications Facility at 401 Chapel Hill Road, Montville, Connecticut

Dear Mr. Goderre:

This firm represents Cellco Partnership d/b/a Verizon Wireless (“Cellco”). Today, Cellco filed a Petition for Declaratory Ruling (“Petition”) with the Connecticut Siting Council (“Council”) seeking approval for the installation of a wireless telecommunications facility at 401 Chapel Hill Road in Montville (the “Property”).

The proposed Cellco facility will consist of the installation of nine (9) panel type antennas and six (6) remote radio heads at the 160-foot level on the existing 300-foot SubCarrier Communications tower. Equipment associated with the antennas and a diesel-fuel back up generator will be located on the ground near the base of the tower. Installation of the Cellco ground-base equipment and generator will require a minor expansion (260 square feet) of the facility compound fence line.

A copy of the full Petition is attached for your review. If you have any questions regarding this Petition, please contact me or the Siting Council directly at (860) 827-2935.

Sincerely,



Kenneth C. Baldwin

Attachment

33404619-v1

STATE OF CONNECTICUT
CONNECTICUT SITING COUNCIL

IN RE: :
: :
A PETITION OF CELLCO PARTNERSHIP : PETITION NO. ____
D/B/A VERIZON WIRELESS FOR A :
DECLARATORY RULING ON THE NEED :
TO OBTAIN A SITING COUNCIL :
CERTIFICATE FOR THE INSTALLATION :
OF A WIRELESS TELECOMMUNICATIONS :
FACILITY AT 401 CHAPEL HILL ROAD, :
MONTVILLE, CONNECTICUT : FEBRUARY 2, 2026

PETITION FOR A DECLARATORY RULING:
INSTALLATION HAVING NO
SUBSTANTIAL ADVERSE ENVIRONMENTAL EFFECT

I. Introduction

Pursuant to Sections 16-50j-38 and 16-50j-39 of the Regulations of Connecticut State Agencies (“R.C.S.A.”), Cellco Partnership d/b/a Verizon Wireless (“Cellco”) hereby petitions the Connecticut Siting Council (the “Council”) for a declaratory ruling (“Petition”) that no Certificate of Environmental Compatibility and Public Need (“Certificate”) is required under Section 16-50k(a) of the Connecticut General Statutes (“C.G.S.”) for modifications to the existing wireless telecommunications facility at 401 Chapel Hill Road in Montville, Connecticut (the “Property”). These modifications include the installation of antennas and related equipment on the tower and the installation of associated equipment on the ground near the base of the tower. The tower and Property are owned by SubCarrier Communications, Inc. (“SubCarrier”). Cellco refers to its proposed facility as its “Montville West” cell site.

II. Cellco’s Proposed Montville West Facility

Cellco’s proposed Montville West Facility will involve the installation of nine (9) panel type antennas and six (6) remote radio heads (“RRHs”), at the 160-foot level of the 300-foot

lattice tower. Cellco will install an equipment cabinet, a battery cabinet and a 50kW diesel generator on a concrete pad in the southeast corner of the facility compound. The installation of Cellco's ground mounted equipment and generator will require an expansion of the facility compound fence line totaling 260 square feet (10' x 26'). (*See* Cellco's Project Plans included in Attachment 1).

Cellco will provide wireless telecommunications service in its 700 MHz, 850 MHz, 1900 MHz, 2100 MHz and 3700 MHz frequencies from the proposed Montville West Facility. Specifications for Cellco's antennas and remote radio heads are included in Attachment 2. The Montville West Facility will be capable of providing 5G wireless services.

According to the attached Structural Analysis ("SA") and New Antenna Mount Analysis Report ("MA"), the existing tower, tower foundation and new antenna mounting system, can support Cellco's proposed installation. Copies of the SA and MA are included in Attachment 3.

III. Discussion

A. The Proposed Facility Will Not Have A Substantial Adverse Environmental Effect

The Public Utility Environmental Standards Act (the "Act"), C.G.S. § 16-50g *et seq.*, provides for the orderly and environmentally compatible development of telecommunications facilities in the state to avoid "a significant impact on the environment and ecology of the State of Connecticut." C.G.S. § 16-50g. To achieve these goals, the Act established the Council, and requires a Certificate of Environmental Compatibility and Public Need for the construction of cellular telecommunication towers "that may, as determined by the council, have a substantial adverse environmental effect". C.G.S. § 16-50k(a). The addition of Cellco antennas at the 160-foot level on the existing 300-foot lattice tower, the installation of ground-mounted equipment, and a 260 square foot expansion of the facility compound will have an insignificant effect on the

surrounding area.

1. Physical Environmental Effects

Cellco respectfully submits that the proposed facility will not involve a significant impact on the physical and environmental characteristics of the Property or the surrounding community. Cellco's ground disturbance will be restricted to an approximately 260 square foot area needed to expand the compound fence for Cellco's equipment cabinets and generator. No tree clearing and no site grading is required to accommodate the expansion of the facility compound fence.

2. Visual Effects

The installation of Cellco antennas at the 160-foot level on the existing 300-foot lattice tower and the installation of ground equipment and a diesel generator will have an incremental visual effect on the area surrounding the Property.

3. FCC Compliance

Radio frequency ("RF") emissions from the Montville West Facility will not exceed the maximum permissible exposure limits established by the Federal Communications Commission ("FCC"). Included in Attachment 4 is a Calculated Radio Frequency Emissions Report demonstrating that the facility, with Cellco's proposed antennas will operate well within (5.13%) the FCC safety standards.

4. FAA Notification Not Required

Cellco's antennas would be located at the 160-foot level of an existing 300-foot tower. The modification described herein do not require an extension of the existing tower. Notification to the FAA is, therefore not required.

In sum, the effect of Cellco's proposed facility modifications on the environment would be minimal and limited, rather than significant. Thus, the proposed facility, including the limited expansion of the facility compound fence would not result in a substantial adverse environmental

effect and is not a modification for which the General Assembly intended to require a Certificate under C.G.S. § 16-50k(a).

B. Notice to the Town, Tower Owner and Abutting Landowners

On February 2, 2026, a copy of this Petition was sent to Montville's Mayor, Leonard G. Bunnell, Sr; Dennis Goderre, Director Land Use and Development; and SubCarrier Communications Inc., the owner of the Property and the tower. Copies of the letters sent to these public officials and Property owner are included in Attachment 5.


Notice of this Petition was also sent to the owners of land considered to abut the Property. A sample abutter's notice letter and a list of those abutting landowners to whom notice was sent is included in Attachment 6.

IV. Conclusion

Based on the information provided above, Cellco respectfully requests that the Council issue a determination, in the form of a declaratory ruling, that the facility modifications described above, will not have a substantial adverse environmental effect and do not require the issuance of a Certificate of Environmental Compatibility and Public Need pursuant to § 16-50k of the General Statutes.

Respectfully submitted,

CELLCO PARTNERSHIP d/b/a VERIZON
WIRELESS

By 

Kenneth C. Baldwin, Esq.
Robinson & Cole LLP
One State Street
Hartford, CT 06103
(860) 275-8200
Its Attorneys

ATTACHMENT 1



WIRELESS TELECOMMUNICATIONS FACILITY

SITE NAME: MONTVILLE WEST CT

SUBCARRIER COMMUNICATIONS SITE #4048

401 CHAPEL HILL RD.

OAKDALE, CT 06370

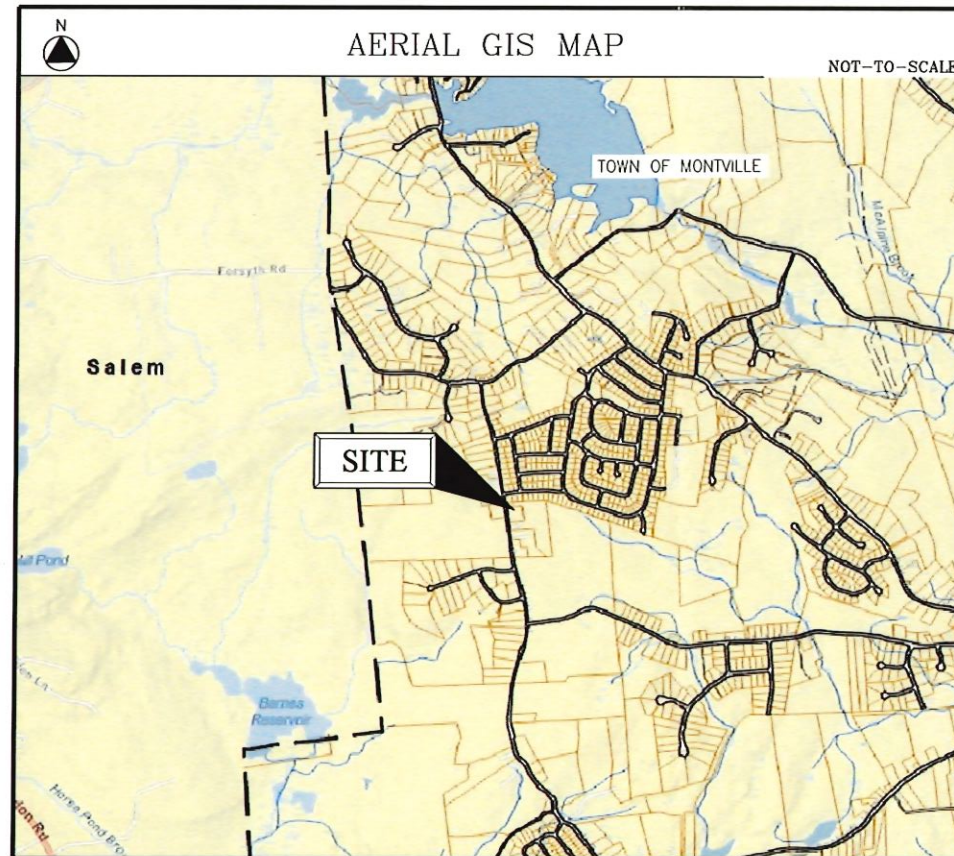
TOWN OF MONTVILLE

PROJECT SUMMARY

SITE NAME:	MONTVILLE WEST CT
SITE ADDRESS:	401 CHAPEL HILL RD. OAKDALE, CT 06370
OWNER INFO:	SUBCARRIER COMMUNICATIONS INC. 139 WHITE OAK LN OLD BRIDGE, NJ 08857
PARCEL ID:	036-002-000
TOWER COORDINATES:	41° 28' 07.68" N 72° 12' 11.56" W 41.46880 -72.20321
AMSL:	609 FT.
APPLICANT:	CELLCO PARTNERSHIP d.b.a. VERIZON WIRELESS 20 ALEXANDER DR. WALLINGFORD, CT 06492
VERIZON WIRELESS CONSTRUCTION:	MIKE HUMPHREYS (860) 560-6410 STRUCTURE CONSULTING GROUP
REAL ESTATE CONSULTANT:	JOE OSCHKE (508) 887-1975 SMARTLINK
LEGAL/REGULATORY COUNSEL:	KENNETH C. BALDWIN, ESQ. ROBINSON & COLE, LLP (860) 275-8345

PROJECT DESCRIPTION

- INSTALLATION OF OUTDOOR EQUIPMENT CABINETS AND A DIESEL FUELED STANDBY GENERATOR ON A NEW 20'x12' CONCRETE PAD
- MINOR EXPANSION OF EXISTING FENCED COMPOUND
- INSTALLATION OF (9) PANEL ANTENNAS AND ASSOCIATED DEVICES ON THE EXISTING SELF-SUPPORT LATTICE TOWER AT 160 FT. A.G.L.
- INSTALLATION OF (2) GPS ANTENNAS ON EQUIPMENT CANOPY
- INSTALLATION OF CABLING FROM EQUIP. CABINETS TO ANTENNAS
- ELECTRICAL & TELEPHONE SERVICES ROUTED UNDERGROUND TO EXISTING UTILITY DEMARCATION POINTS AT COMPOUND



DRAWING SCHEDULE

SHEET NO.	SHEET DESCRIPTION
T-1	TITLE SHEET
C-1	SITE LAYOUT
A-1	PARTIAL COMPOUND PLAN & SOUTH ELEVATION
A-2	EQUIPMENT PLANS & DETAILS
A-3	ANTENNA PLAN & DETAILS

REFERENCED CODES & STANDARDS:

1. 2022 CT STATE BUILDING CODE (CSBC) EFFECTIVE OCTOBER 1, 2022.
2. ANSI/TIA-222-H-2017
3. ASCE/SEI 7-16 WITH SUPPLEMENT 1

REFER TO OTHER DOCUMENTS RELATED TO PROJECT:

1. STRUCTURAL ANALYSIS REPORT DATED 12-4-25 BY CSEI INC., DUNWOODY, GA.
2. MOUNT ANALYSIS REPORT DATED 8-14-25 BY COLLIERS ENGINEERING & DESIGN, MT. LAUREL, NJ.

Cellco Partnership
d/b/a Verizon Wireless



WIRELESS COMMUNICATIONS FACILITY
20 ALEXANDER DRIVE
WALLINGFORD, CT 06492

On Air Engineering, LLC

88 Foundry Pond Rd.
Cold Spring, NY 10516
dweinpahl@onaireng.com
201-456-4624

LICENSURE



DAVID WEINPAHL, P.E.
CT LIC. NO. 22144

NO.	DATE	SUBMISSIONS
0	11.19.25	REVIEW
1	11.21.25	CSC FILING
2	11.26.25	REVISED PER VERIZON COMMENTS
3	01.15.26	REVISED PER UPDATED 'SA' REPORT

DRAWN BY:	CHECKED BY:
AS	DW

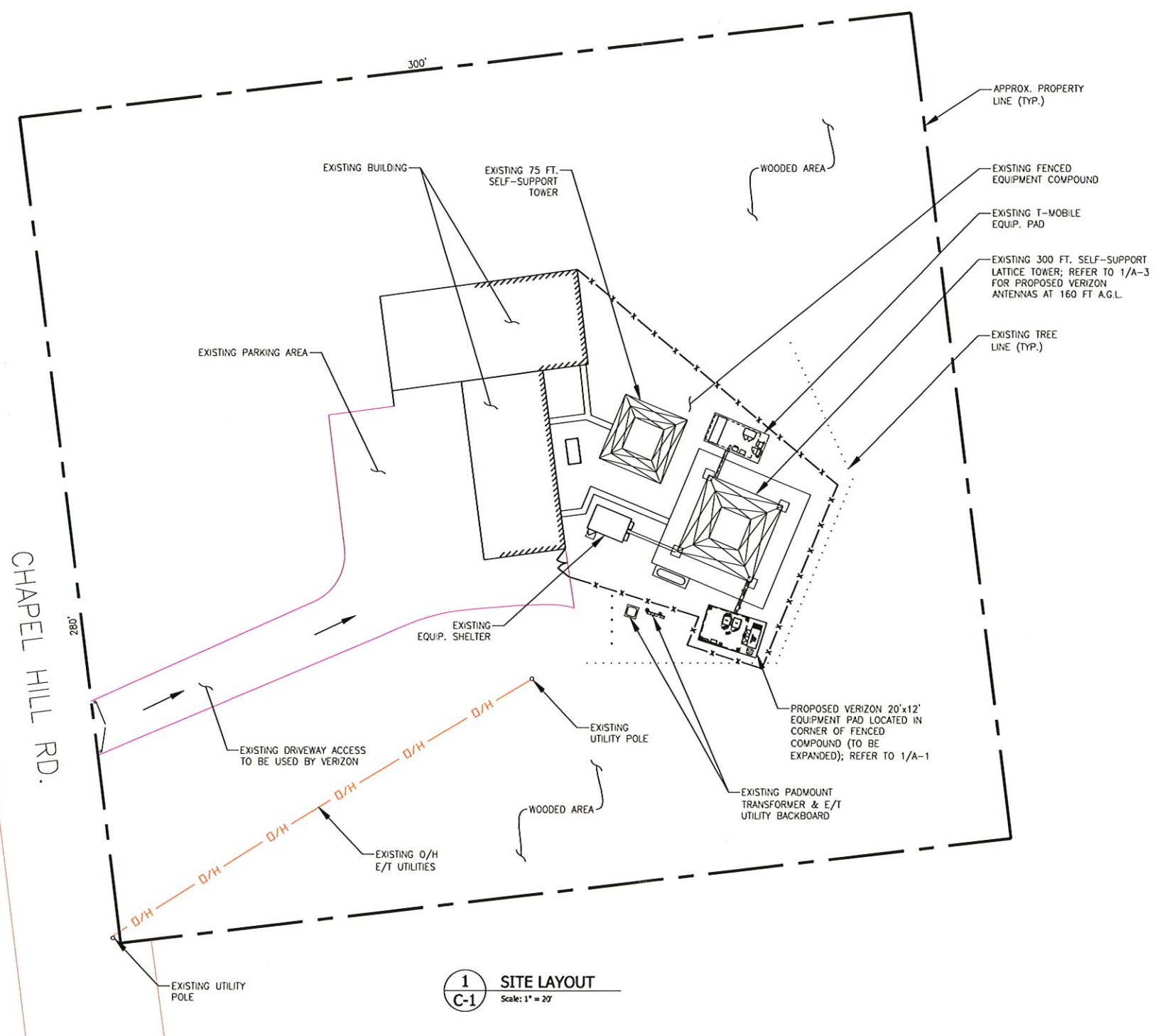
VERIZON SITE NAME:
MONTVILLE WEST CT

PROJECT DESCRIPTION:
NEW BUILD MACRO
FUZE #17454688

PROJECT INFORMATION:
SUBCARRIER COMM. SITE #4048
401 CHAPEL HILL RD.
OAKDALE, CT 06370
TOWN OF MONTVILLE

DRAWING TITLE:
TITLE SHEET

SHEET NUMBER:
T-1



1
C-1 **SITE LAYOUT**
Scale: 1" = 20'

LEGEND:
→ SITE ACCESS

Cellco Partnership
d/b/a Verizon Wireless



WIRELESS COMMUNICATIONS FACILITY
20 ALEXANDER DRIVE
WALLINGFORD, CT 06492

On Air Engineering, LLC
88 Foundry Pond Rd.
Cold Spring, NY 10516
dweinpahl@onaireng.com
201-456-4624

LICENSURE



DAVID WEINPAHL, P.E.
CT LIC. NO. 22144

NO:	DATE:	SUBMISSIONS
0	11.18.25	REVIEW
1	11.21.25	CSC FILING
2	11.26.25	REVISED PER VERIZON COMMENTS
3	01.15.26	REVISED PER UPDATED 'SA' REPORT

DRAWN BY: AS
CHECKED BY: DW

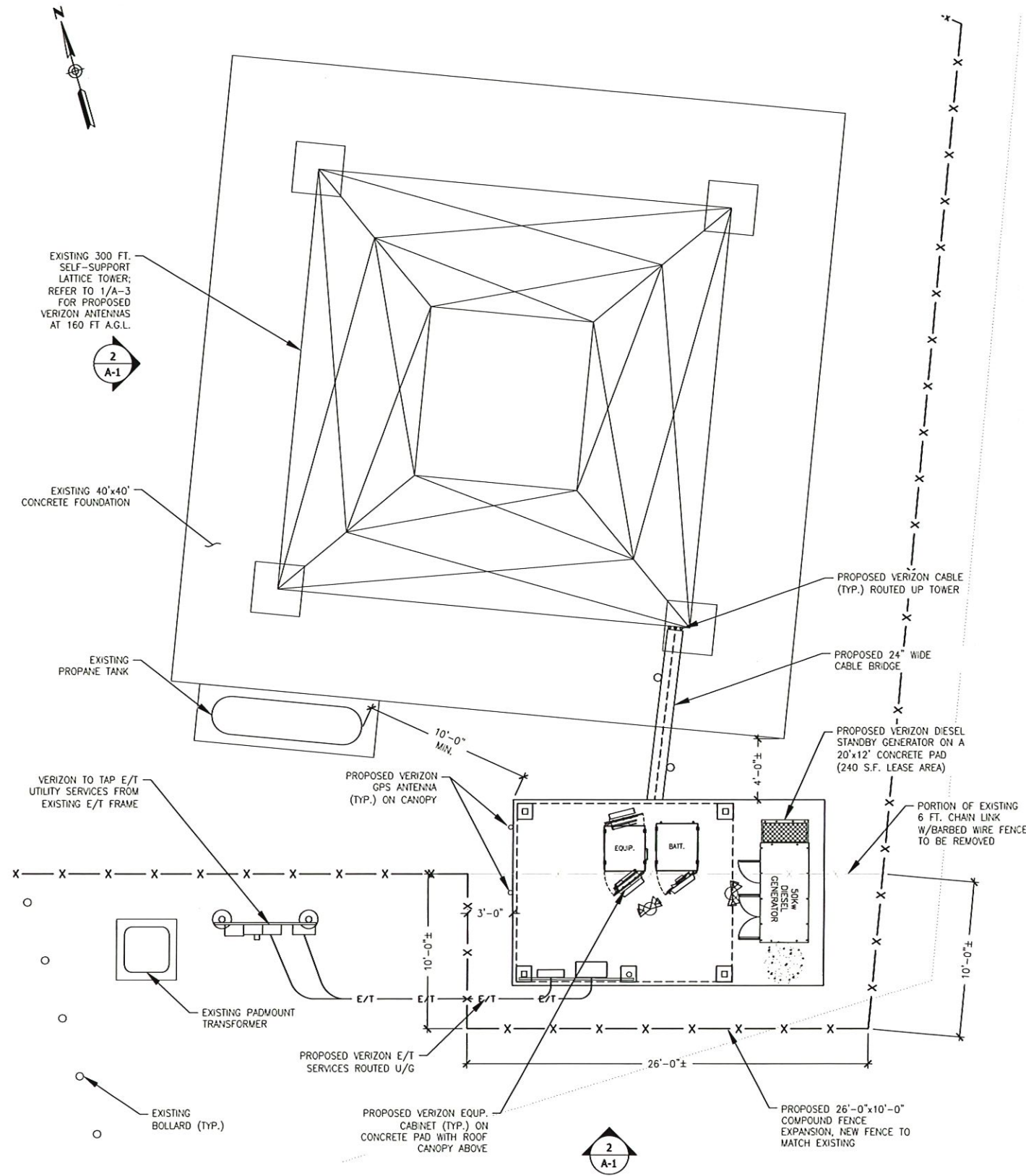
VERIZON SITE NAME:
MONTVILLE WEST CT

PROJECT DESCRIPTION:
**NEW BUILD MACRO
FUZE #17454688**

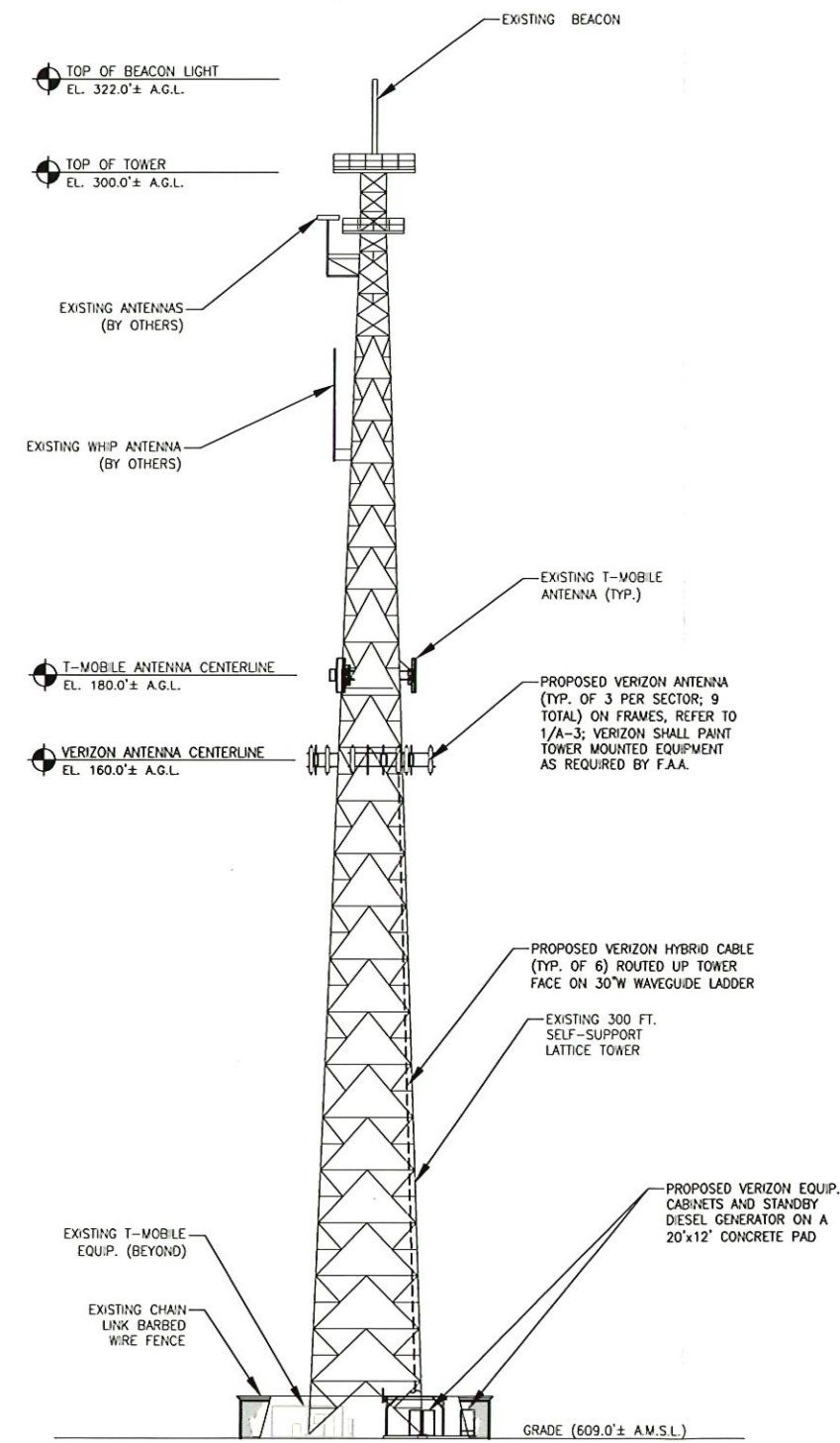
PROJECT INFORMATION:
SUBCARRIER COMM. SITE #4048
401 CHAPEL HILL RD.
OAKDALE, CT 06370
TOWN OF MONTVILLE

DRAWING TITLE:
SITE LAYOUT

SHEET NUMBER:
C-1



1 PARTIAL COMPOUND PLAN
Scale: 1/4" = 1'-0"



2 SOUTH ELEVATION
Scale: 1" = 20'

Cellco Partnership
d/b/a Verizon Wireless

WIRELESS COMMUNICATIONS FACILITY
20 ALEXANDER DRIVE
WALLINGFORD, CT 06492

On Air Engineering, LLC
88 Foundry Pond Rd.
Cold Spring, NY 10516
dweinpahl@onaireng.com
201-456-4624

LICENSURE

DAVID WEINPAHL, P.E.
CT LIC. NO. 22144

NO.	DATE	SUBMISSIONS
0	11.18.25	REVIEW
1	11.21.25	CSC FILING
2	11.26.25	REVISED PER VERIZON COMMENTS
3	01.15.26	REVISED PER UPDATED 'SA' REPORT

DRAWN BY: AS CHECKED BY: DW

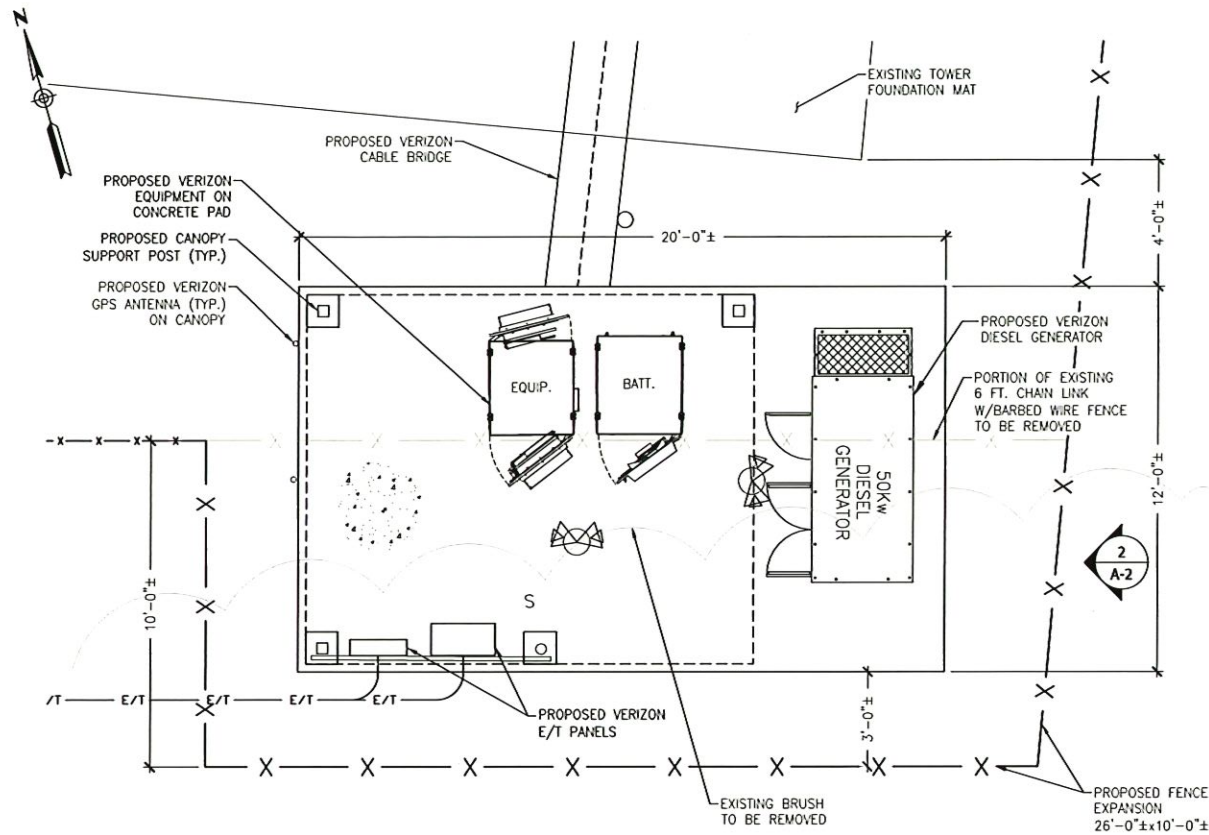
VERIZON SITE NAME:
MONTVILLE WEST CT

PROJECT DESCRIPTION:
**NEW BUILD MACRO
FUZE #17454688**

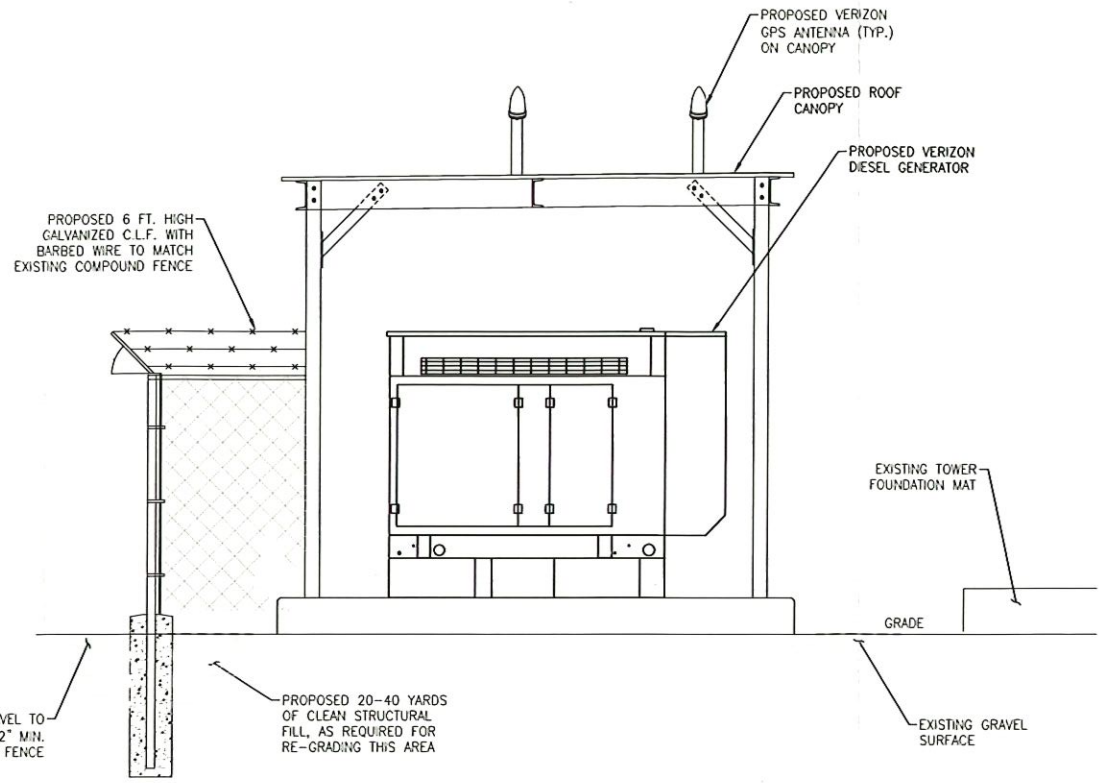
PROJECT INFORMATION:
SUBCARRIER COMM. SITE #4048
401 CHAPEL HILL RD.
OAKDALE, CT 06370
TOWN OF MONTVILLE

DRAWING TITLE:
**PARTIAL COMPOUND
PLAN & SOUTH
ELEVATION**

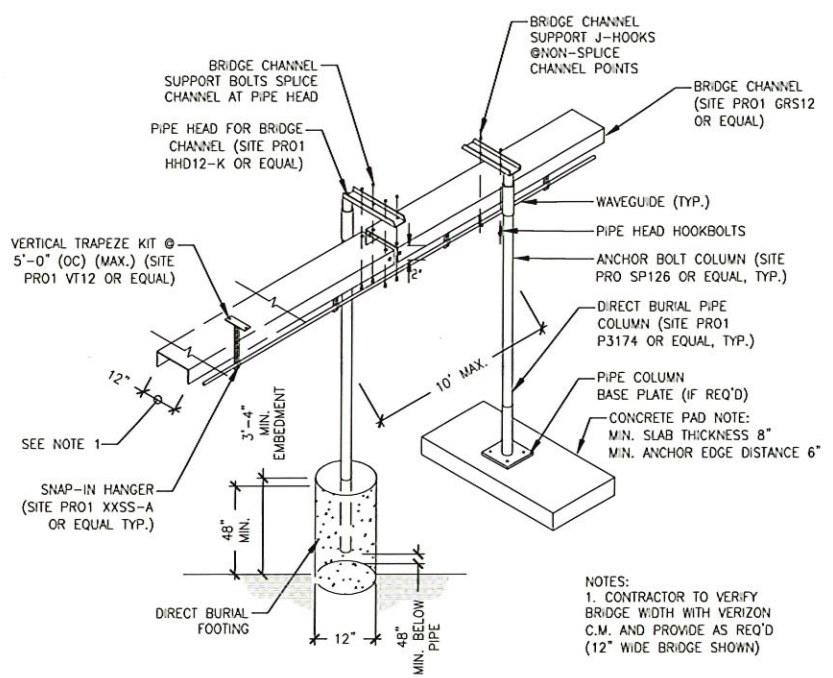
SHEET NUMBER:
A-1



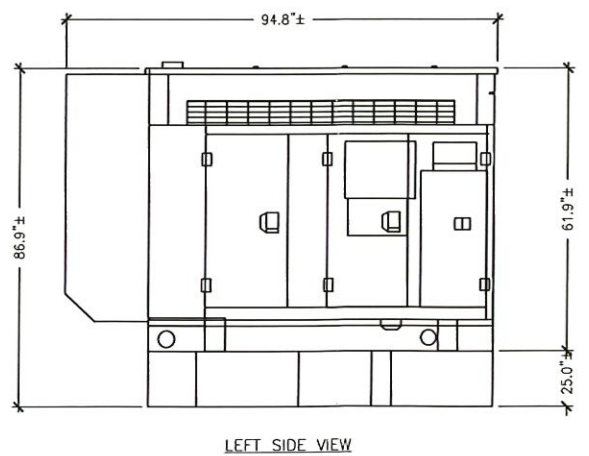
1 EQUIPMENT PLAN
A-2 Scale: 3/8" = 1'-0"



2 EQUIPMENT ELEVATION
A-2 Scale: 3/8" = 1'-0"



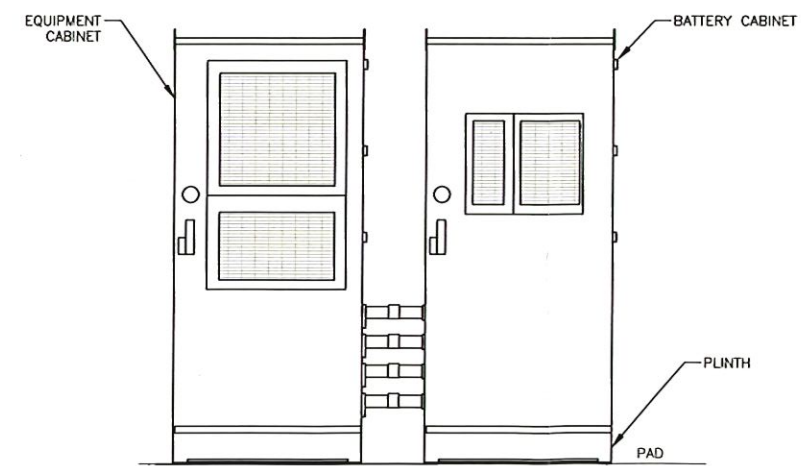
3 CABLE BRIDGE DETAIL
A-2 Scale: N.T.S.



TYPICAL GENERATOR SPECIFICATIONS			
LENGTH	WIDTH	HEIGHT	WEIGHT
94.8"	38.0"	86.9"	3,000 LBS

1. DIMENSIONS INCLUDE A 132 GALLON BASE TANK AND LEVEL 2 SOUND ATTENUATED ENCLOSURE
2. GENERATOR TO BE EXERCISED WEEKLY FOR APPROX. 20 MINUTES; TO BE PROGRAMMED FOR WEEKDAY EXERCISING ONLY, DAYLIGHT HOURS.

4 50KW DIESEL GENERATOR
A-2 Scale: N.T.S.



TYPICAL EQUIPMENT SPECIFICATIONS				
TYPE	HEIGHT	WIDTH	DEPTH	WEIGHT
EQUIP.	74"	36.0"	37"	525 LBS (2)
BATTERY	74"	36.0"	37"	1,060 LBS (1)(2)

(1) WEIGHT OF CABINET WITH 2-STRINGS OF BATTERIES
(2) ESTIMATED WEIGHT WITH SUB-BASE (PLINTH)

5 FRONT CABINET ELEVATION
A-2 Scale: 3/8" = 1'-0"

Cellco Partnership
d/b/a Verizon Wireless
verizon
WIRELESS COMMUNICATIONS FACILITY
20 ALEXANDER DRIVE
WALLINGFORD, CT 06492

On Air Engineering, LLC
88 Foundry Pond Rd.
Cold Spring, NY 10516
dweinpahl@onaireng.com
201-456-4624

LICENSE NO. 22144
DAVID WEINPAHL, P.E.
CT LIC. NO. 22144

NO.	DATE	SUBMISSIONS
0	11.18.25	REVIEW
1	11.21.25	CSC FILING
2	11.26.25	REVISED PER VERIZON COMMENTS
3	01.15.26	REVISED PER UPDATED 'SA' REPORT

DRAWN BY: AS
CHECKED BY: DW

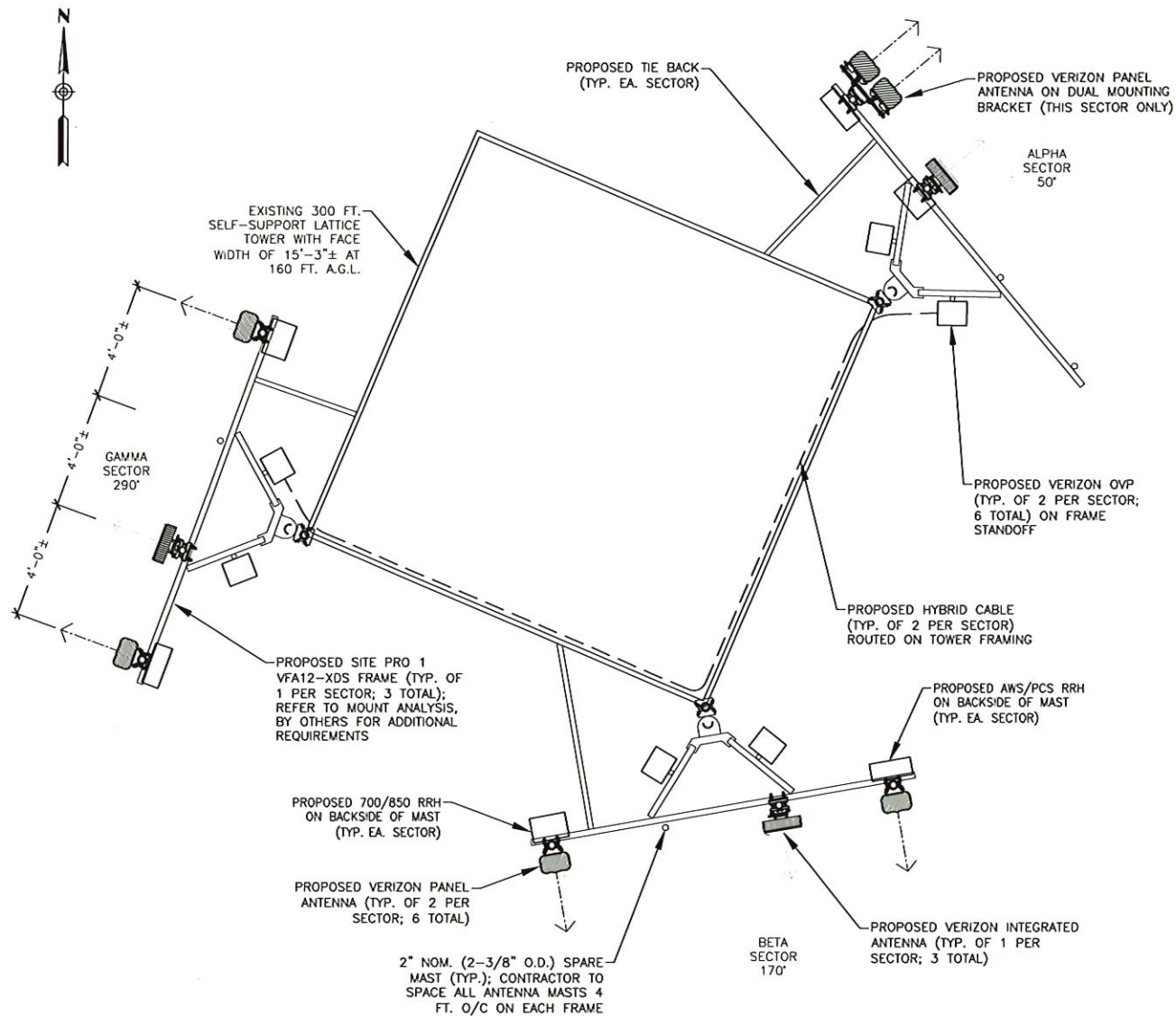
VERIZON SITE NAME:
MONTVILLE WEST CT

PROJECT DESCRIPTION:
**NEW BUILD MACRO
FUZE #17454688**

PROJECT INFORMATION:
SUBCARRIER COMM. SITE #4048
401 CHAPEL HILL RD.
OAKDALE, CT 06370
TOWN OF MONTVILLE

DRAWING TITLE:
**EQUIPMENT PLAN
& DETAILS**

SHEET NUMBER:
A-2



1 ANTENNA PLAN @ 160 FT. A.G.L.
Scale: 3/8" = 1'-0"

2 MX06 ANTENNA DETAIL
Scale: N.T.S.

HEIGHT	WIDTH	DEPTH	WEIGHT
72.0	12.2"	7.5"	41.0 LBS

NOTES: USE "DUAL MOUNTING" BRACKET AT ALPHA SECTOR ONLY

3 MT6413 INTEGRATED ANTENNA
Scale: N.T.S.

MT6413 ANTENNA SPECIFICATIONS			
HEIGHT	WIDTH	DEPTH	WEIGHT
28.9"	15.8"	5.51"	57.3 LBS

4 RRH DETAIL - 700/850
Scale: N.T.S.

SAMSUNG RRH 700/850 ORAN MODEL: RF4461D-13A SPECIFICATION			
HEIGHT	WIDTH	DEPTH	WEIGHT
19.7"	14.9"	10.2"	79.2 LBS

5 RRH DETAIL - AWS/PCS
Scale: N.T.S.

SAMSUNG RRH AWS/PCS ORAN MODEL: RF4801d-25A SPECIFICATION			
HEIGHT	WIDTH	DEPTH	WEIGHT
21.8"	17.3"	7.2"	87.9 LBS

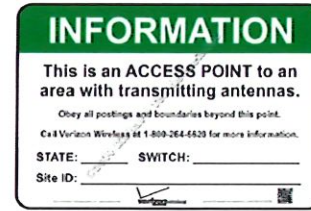
6 CABLE DIST. BOX DETAIL
Scale: N.T.S.

RAYCAP EQUIPMENT SPECIFICATIONS				
TYPE	HEIGHT	WIDTH	DEPTH	WEIGHT
NGOV/P3	20.4"	9.7"	5.4"	15.9 LBS

7 GPS ANTENNA DETAIL
Scale: 3/4" = 1'-0"

KS-24119L-112A GPS ANTENNA SPECIFICATION			
HEIGHT	WIDTH	DIAMETER	WEIGHT
5"	16.06"	3.17"	0.6 LBS

*ALL MOUNTING OPTIONS FIT PIPES OF 1"-1.45" MAX. DIA.



8 VERIZON INFORMATION SIGN
Scale: N.T.S.

NOTE:
1. "GREEN" INFORMATION SIGN SHALL BE LOCATED AT COMPOUND ENTRY LOCATION AND VERIZON EQUIPMENT.
2. SIGN MEASURES 12"Wx8"H



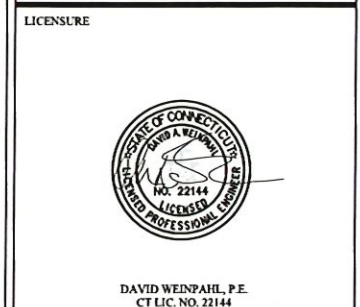
9 CAUTION SIGN
Scale: N.T.S.

NOTE:
1. "YELLOW" CAUTION SIGN SHALL BE LOCATED AT COMPOUND ENTRY LOCATION AND VERIZON EQUIPMENT.
2. SIGN MEASURES 12"Hx8"W

Cellco Partnership
d/b/a Verizon Wireless



On Air Engineering, LLC
88 Foundry Pond Rd.
Cold Spring, NY 10516
dweinpahl@onaireng.com
201-456-4624



NO.	DATE	SUBMISSIONS
0	11.18.25	REVIEW
1	11.21.25	CSC FILING
2	11.26.25	REVISED PER VERIZON COMMENTS
3	01.15.26	REVISED PER UPDATED 'SA' REPORT

DRAWN BY: AS
CHECKED BY: DW

VERIZON SITE NAME:
MONTVILLE WEST CT

PROJECT DESCRIPTION:
NEW BUILD MACRO FUZE #17454688

PROJECT INFORMATION:
**SUBCARRIER COMM. SITE #4048
401 CHAPEL HILL RD.
OAKDALE, CT 06370
TOWN OF MONTVILLE**

DRAWING TITLE:
ANTENNA PLAN & DETAILS

SHEET NUMBER:
A-3

ATTACHMENT 2



MX06FHG665-HG

NWAV™ X-Pol Hex-Port Antenna

X-Pol Hex-Port 6 ft 65° Form in Tighter High Gain (FHG) with Smart Bias Ts, 698-2180 MHz:

2 ports 698-894 MHz and 4 ports 1695-2180 MHz

- Industry-leading high gain for MB and LB for extended cell coverage
- Excellent passive intermodulation (PIM) performance reduces harmful interference.
- Fully integrated (iRETs) with independent RET control for low and high bands for ease of network optimization
- Suitable for LTE/CDMA/PCS/UMTS/GSM air interface technologies
- Integrated Smart Bias-Ts reduce leasing costs
- Optimized width for reduced wind loading



NWAV

Electrical specification (minimum/maximum)	Ports 1, 2		Ports 3, 4, 5, 6		
	698-798	824-894	1695-1880	1850-1990	1920-2180
Frequency bands, MHz	698-798	824-894	1695-1880	1850-1990	1920-2180
Polarization	± 45°		± 45°		
Max gain over all tilts, dBi	15.5	16.0	18.9	19.0	19.6
Average gain, dBi	15.3 ± 0.2	15.8 ± 0.2	18.8 ± 0.1	18.8 ± 0.2	19.3 ± 0.3
Horizontal beamwidth (HBW), degrees	67.0	64.0	63.0	64.0	64.0
Front-to-back ratio, co-polar power @180°± 30°, dB	>25.0	>25.0	>28.0	>26.0	>25.0
X-Pol discrimination (CPR) at boresight, dB	>20.0	>18.0	>25	>20	>18
Sector power ratio, percent ¹	<4.0	<3.6	<5.0	<3.8	<3.6
Vertical beamwidth (VBW), degrees ¹	14.0	12.5	5.8	5.5	5.2
Electrical downtilt (EDT) range, degrees	0-12		0-9		
First upper side lobe (USLS) suppression, dB ¹	≤-16.0	≤-15.0	≤-16.0	≤-16.0	≤-16.0
Cross-polar isolation, port-to-port, dB ¹	25	25	25	25	25
Max VSWR / return loss, dB	1.5:1 / -14.0		1.5:1 / -14.0		
Max passive intermodulation (PIM), 2x20W carrier, dBc	-153		-153		
Max input power per any port, watts	300		250		
Total composite power all ports, watts	1500				

¹ Typical value over frequency and tilt

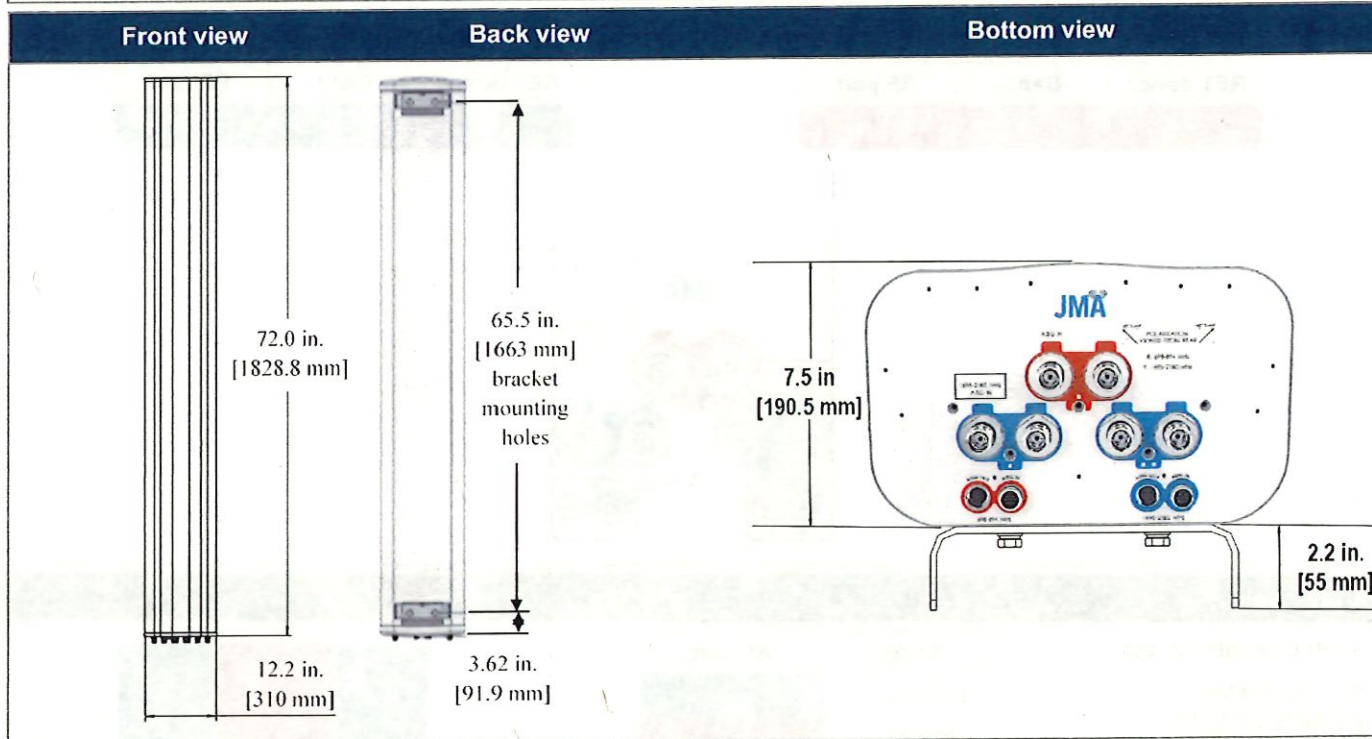


MX06FHG665-HG

NWAV™ X-Pol Hex-Port Antenna

Mechanical specifications

Dimensions height/width/depth, inches (mm)	72.0/ 12.2/ 7.5 (1828.8/ 310/ 191)
Shipping dimensions length/width/height, inches (mm)	76/ 20/ 14.5 (1930/ 508/ 368)
No. of RF input ports, connector type, and location	6 x 4.3-10 female, bottom
RF connector torque	96 lbf-in (10.85 N·m or 8 lbf-ft)
Net antenna weight, lb (kg)	41 (18.6)
Shipping weight, lb (kg)	86 (39.0)
Antenna mounting and downtilt kit included with antenna	91900318
Net weight of the mounting and downtilt kit, lb (kg)	26 (11.82)
Range of mechanical up/down tilt	-2° to 12°
Rated wind survival speed, mph (km/h)	150 (241)
Frontal and lateral wind loading @ 150 km/h, lbf (N)	66.9 (292.6), 60.0 (266.9)
Equivalent flat plate @ 100 mph and Cd=2, sq ft	1.41
EPA frontal and lateral, ft ² , (m ²)	2.0 (0.28), 3.6 (0.33)



Ordering information

Antenna model	Description
MX06FHG665-HG	6F X-Pol HEX FHG 65°, 0-12° / 0-9° RET, 4.3-10 & SBT
Optional accessories	
AISG cables	M/F cables for AISG connections
PCU-1000 RET controller	Stand-alone controller for RET control and configurations

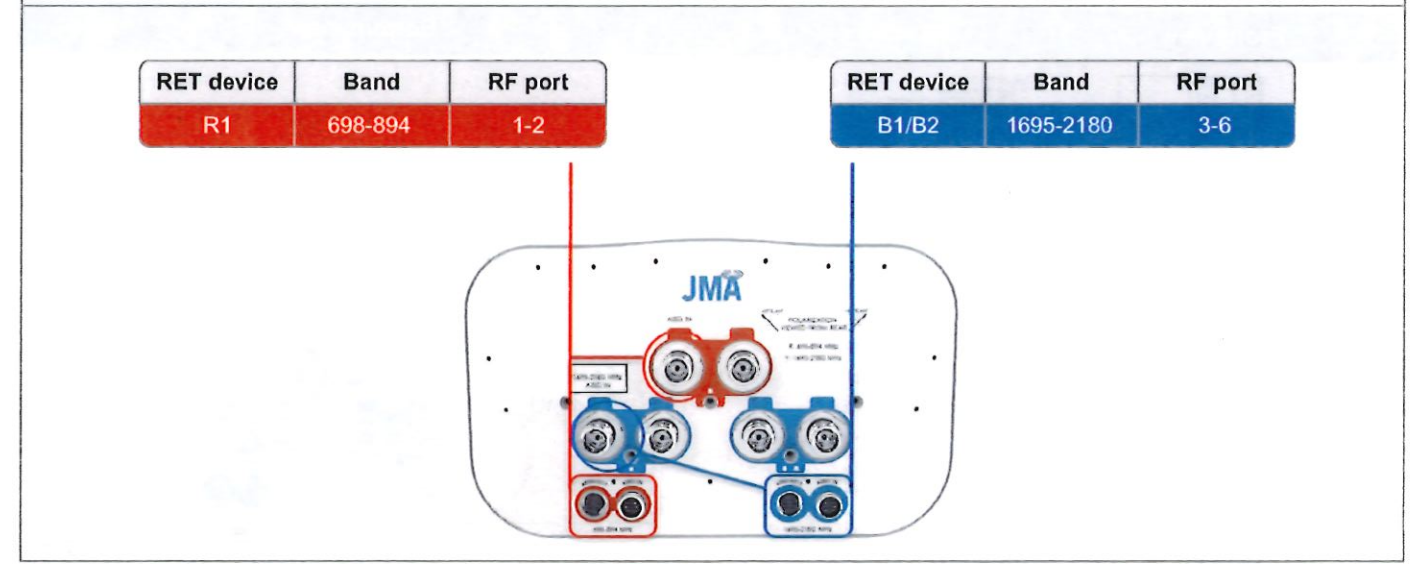


MX06FHG665-HG
NWAV™ X-Pol Hex-Port Antenna

Remote electrical tilt (RET 1000) information	
RET location	Integrated into antenna
RET interface connector type	8-pin AISG connector per IEC 60130-9
RET connector torque	Min 0.5 N·m to max 1.0 N·m (hand pressure & finger tight)
RET interface connector quantity	2 pairs of AISG male/female connectors
RET interface connector location	Bottom of the antenna
Total no. of internal RETs (low bands)	1
Total no. of internal RETs (high bands)	1
RET input operating voltage, vdc	10-30
RET max power consumption, idle state, W	≤ 2.0
RET max power consumption, normal operating conditions, W	≤ 13.0
RET communication protocol	AISG 2.0 / 3GPP

RET and RF connector topology

Each RET device can be controlled either via the designated external AISG connector or RF port as shown below:



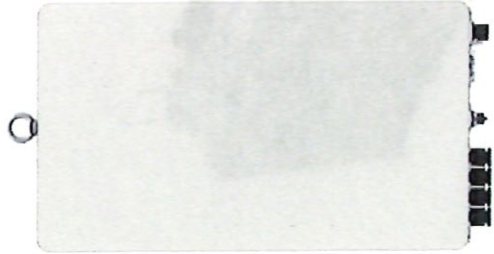
Array topology

3 sets of radiating arrays R1: 698-894 MHz B1: 1695-2180 MHz B2: 1695-2180 MHz	<table border="1"> <thead> <tr> <th>Band</th> <th>RF port</th> </tr> </thead> <tbody> <tr> <td>1695-2180</td> <td>3-4</td> </tr> <tr> <td>698-894</td> <td>1-2</td> </tr> <tr> <td>1695-2180</td> <td>5-6</td> </tr> </tbody> </table>	Band	RF port	1695-2180	3-4	698-894	1-2	1695-2180	5-6	
Band	RF port									
1695-2180	3-4									
698-894	1-2									
1695-2180	5-6									

C-band 64T64R

Gen 2

Gen 2 : Higher conducted power radio with reduced size/volume/weight vs Gen 1 and also SOC embedded for flexibility to support new features



※ Preliminary Design: External appearance and mechanical design can be subject to change

Gen 2. 64T64R C-band MMU Dimensions	
Size (WxHxD)	400 x 734 x 140 mm (15.75 x 28.90 x 5.51 inch)
Weight	26kg (57.3 lb)

Item	Gen 2 64T64R (MT6413-77A)
Air Technology	NR n77/TDD
Frequency	3700 ~ 3980 MHz
IBW	200 MHz
OBW	200 MHz
Carrier Bandwidth	20MHz ready/40/60/80/100 MHz
# of Carriers	2 carriers
Layer	DL : 16L, UL : 16RX (8L)
RF Chain	64T64R
Antenna Configuration	4V16H with 192 AE
EIRP	80.5 dBm @320W (55 dBm + 25.5 dB)
Conductive Power	320W
Spectrum Analyzer	TX/RX support
RX Sensitivity	Typical -97.8dBm @(1Rx, 18.36MHz with 30kHz, 51RBs)
Modulation	DL 256QAM support, (DL 1024QAM with 1 ~2dB power back-off)
Function Split	DL/UL option 7-2x
Input Power	-48 VDC (-38 VDC to -57 VDC)
Power Consumption	1.287W (100% load, room temp.)
Size (WHD)	400 x 734 x 140 mm (15.75 x 28.90 x 5.51 inch)
Volume	41.1L
Weight	26kg (57.3 lb)
Operating Temperature	-40°C ~ 55°C (w/o solar load)
Cooling	Natural convection 3GPP 38.104
Unwanted Emission	FCC 47 CFR 27.53 : < -13dBm/MHz < -40 dBm/MHz @ above 4 GHz < -50 dBm /MHz @ 4.040 ~ 4.050 MHz < -60 dBm /MHz @ above 4.050 MHz
Optic Interface	15km, 4 ports (25Gbps x 4), SFP28, single mode, Bi-di (Option: Duplex)
Mounting Options	Pole, wall
NB-IoT	Not support
External Alarm	4RX
Fronthaul Interface	eCPRI

700/850 4T4R Macro 320W ORU - New Filter (RF4461d-13A)

Specifications

SAMSUNG



* 5MHz supporting in B13(700MHz) depends on 3GPP std. and UE capability.
 External filters in interposer and victim sides for Mexican boarder to support 5MHz service need to be considered
 ** Finger guard is not needed.

Item	Specification
Air Interface Band	LTE NR(HW resource ready) Band13 (700MHz) Band5 (850MHz)
Frequency	DL: 746~756MHz UL: 777~787MHz DL: 869~894MHz UL: 824~849MHz
IBW	10MHz
OBW	10MHz
Carrier Bandwidth	LTE/NR 5~10MHz
# of carriers	2C*
Total # of carriers	4C + B13 (SD-L) 1C
RF Chain	4T4R/2T4R/2T2R/1T2R 2T2R-2T2R bi-sector Total : 320W
RF Output Power	4 x 40W or 2 x 60W ↓ x 40W or 2 x 60W
Spectrum Analyzer	TX/RX Support
RX Sensitivity	Typ. -104.5dBm @1Rx (25RBts 5MHz)
Modulation	256QAM support, (1024QAM with 1~2dB power back-off)
Input Power	-48VDC (-38VDC to -57VDC)
Power Consumption	1.165 Watt @ 100% RF load, room temperature
Size (WHD)	380 x 380 x 260 mm (14.96 x 14.96 x 10.23 inch)
Volume	37.5 L
Weight (W/o Solar Shield & finger guard)	35.9 kg (79.1 lb)
Operating Temperature	-40°C (-40°F) ~ 55°C (131°F) (Without solar load)
Cooling	Natural convection
Unwanted Emission	3GPP 36.104 FCC 47 CFR 27.53 (j, l) -69 dBm/100 kHz per patn @ 896 ~901MHz
CPRI Cascade	Not supported
Optic Interface	20km, 2 ports (9.8Gbps x 2) SFP+, single mode Duplex (Option: Bi-di)
RET & TMA Interface	AISG 3.0
Bias-T	4 ports (2 ports per band)
Mounting Options	Pole, wall
NB-IoT	2GB-21B or 41B 2SA-2GB or 2GB-21B or 4GB
PIM Cancellation	Support
# of antenna port	4
External Alarm	
Fronthaul Interface	Opt. 8 CPRI / Opt. 7-2x selectable (not simultaneous support)
CPRI compression	Not Support

[AWS/PCS 4T8R 640W] Specification

SAMSUNG

Item	4T8R ORU (640W)	
Product Name	RF4801G-25A	
Product Code	SFG-ARR9J	
Air Interface	LTE, NR	
Band	B25(B2)	B66(B4)
Frequency	DL: 1930~1995 MHz UL: 1850~1915 MHz	DL: 2110~2200 MHz UL: 1710~1780 MHz
IBW	65 MHz	90 MHz(DL)/70 MHz (UL)
OBW	30 MHz	60 MHz
Carrier Bandwidth	LTE: 5/10/15/20 MHz, NR: 5/10/15/20/25/30/40 MHz	
# of carriers	3 carriers	5 carriers
Total # of carriers	6 carriers + AWS54(SDL) 1 carrier	
RF Chain	4T8R, 4T4R, 2T4R*, 2T4R+2T4R bi-sector*, 2T2R+2T2R bi-sector*	
RF Output Power	Total: 640W (4x80W+4x80W or 4x60+4x100W) 4 x 80 W	
Spectrum Analyzer	TX/RX Support	
RX Sensitivity	LTE: Typ. -104.6dBm@1Rx (SCS 15KHz, 25RBs 5MHz) NR: Typ. -104.4dBm@1Rx (SCS 15KHz, 25RBs 5MHz)	
Modulation	256QAM support, (1024QAM with 1~2 dB power back-off)	
Input Power	-48 VDC (-44 ~ -57 VDC)**	
Power Consumption	Typical 1810 Watt@ 100% RF load, room temp Typical 1940 Watt@ 100% RF load, all temp	
Size (WHD)	440x550x184 mm (17.3x21.7x7.2 inch)	
Volume	44.5 L	
Weight (w/o Solar Shield)	39.9 kg (87.96 lb.)	
Operating Temperature	-40°C (-40°F) ~ 55°C (131°F) (Without solar load)	
Cooling	Natural convection	
Unwanted Emission	3GPP 36.104	3GPP 36.104
	[B2]: FCC 47 CFR 24.238	[B66]: FCC 47 CFR 27.53 h
	[BAS filtering] -30 dBm/100 kHz@2109.45 MHz per port -32 dBm/100 kHz@2108.95 MHz per port	
CPRI Cascade	Not supported	
Optic Interface	25 Gbps x 2 port (15/30km Bi-di or 15km tunable DWDM Duplex)	
RET & TMA Interface	AISG 3.0	
Bias-T	4 ports (2 ports per band)	
Mounting Options	Pole, wall, tower	
NB-IOT	2GB or 2IB or 1GB+1IB	
External Alarm	8	
# of antenna port	4Rx	
Fronthaul Interface	Opt. 7-2x	
Compression	BFPC 9bit	

* HW ready
** power booster is required (not supplied by Samsung)

ATTACHMENT 3

December 4, 2025

Lucrecia Escalante
Site Development & Acquisition Manager
Subcarrier Communications
139 White Oak Lane, Old Bridge, NJ 08857

Re: Structural Review of the Existing 300-ft Self Supporting Lattice Steel Tower
SubCarrier Communications Site: Oakdale CT (Montville), Site I.D. #4048
Verizon Wireless Site ID: 5000977596-VZW / Montville West CT
Location: 401 Chapel Hill Road, Village of Oakdale, CT 06370; New London County, CT

Dear Lucrecia,

Communication Structures Engineering, Inc. (CSEI) has completed a structural review of the existing 300-ft Self Supported Tower located at this Subcarrier Communications Inc. site known as Oakdale, CT, Site I.D.#4048. In accordance with your request, we performed a structural analysis of this tower to check its capability to support the existing tower & equipment loads as well as the loads from the proposed Verizon Wireless equipment additions.

EXISTING TOWER INFORMATION & HISTORY

The 300-ft self-supported tower at this site was built in 1969 by Flint Steel Corp. for AT&T Long Lines Eastern Region. This tower, was built to provide an AT&T Microwave Radio Path to Greenhill R.I. It is a four-sided, lattice braced steel structure with a top grated antenna platform that measures 10'-0" X 23'-3", and a tower base plan dimension of 26'-4" X 26'-4". This tower was originally designed to support two large Western Electric KS15676 Horn Reflector Antennas on the top platform. It is supported on a concrete spread footing foundation designed in 1968 by Rose Chulkoff & Rose Engineering (RCR of NYC). Both of the original AT&T KS15676 Horn Antennas were removed from the top antenna platform in 2006. The tower foundation was strengthened in 2006. The tower face bracing steel was strengthened in 2021.

CSEI utilized the following documents from our archives to conduct our structural review of this tower: 1.) The 1968 AT&T Tower Design Drawings; 2.) The 1969 Flint Steel Tower Shop & Erection Drawings; 3.) The 1968 RCR Tower Foundation Design Drawings & Calculations; and 4.) The 1966 Geotechnical Report & Soil Borings. The new proposed Verizon Wireless equipment loading was acquired from the information stated on the Verizon's Co-location Application submitted on 8/06/25 to Subcarrier Communications. A site visit or condition survey of this tower was not a part of CSEI's scope of work for this tower. For our analysis we have assumed that the tower has been maintained in good physical condition equal. This analysis is also based on the assumption that this steel tower has been correctly strengthened in accordance with CSEI's Tower Strengthening, Drawings S1-21103 & S2-21103 dated 3-15-21.

DESIGN CRITERIA

The specific loading criteria that we utilized were those prescribed by the "2022 Connecticut State Building Code" & "ANSI/TIA-222-H," "Structural Standards for Antenna Supporting Structures". In accordance with the this code & standard, the wind speed that we utilized for the analysis of this structure was the "Ultimate 3 second Gust Wind Speed" of 125-mph applicable to this location. The tower was analyzed as a Class II Structure. Based on our review of the topography & local features, we have considered this site location to be an Exposure Category 'B' and Topographic Category '1' site. See the next page titled, "Design Criteria", for a more complete listing of all equipment items that were used to determine the loadings for our analysis.

STRUCTURAL ANALYSIS PROCEDURE

The referenced design criteria combined with wind tunnel test data from tests conducted on AT&T tower framing and tower platforms, were utilized to determine the applicable loads for this structure. A frame analysis was then performed utilizing the stated wind loads and a computer model of the tower framing modeled on Power Line Systems Inc. "PLS Tower" Program. The load carrying frame members of this structure were reviewed to check their compliance with the "2022 Connecticut State Building Code" & ANSI/TIA-222-H

RESULTS OF STRUCTURAL ANALYSIS

Existing Steel Tower: Our analysis has determined that this steel tower, with the added strengthening done in 2021, was found to have sufficient theoretical capacity to support the existing customer equipment & proposed Verizon Wireless loads listed on the attached Design Criteria. No additional tower strengthening is needed at this time.

Existing Tower Foundation: The existing tower foundation was found to have sufficient theoretical capacity to support the existing and proposed tower & equipment loads. No strengthening of the tower foundation will be necessary.

TOWER STRESS RATING WITH THE ADDED VERIZON WIRELESS EQUIPMENT

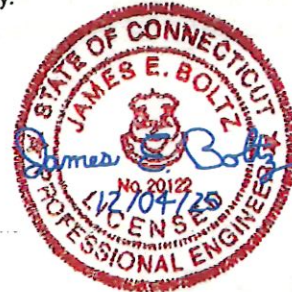
Maximum Tower Stress Level: 93% (Pass) / Maximum Foundation Stress 85% (Pass)

CSEI would be happy to respond to any questions regarding this analysis & report.

Sincerely,



James E. Boltz, P.E. (CT P.E. #20122)



Attachments: 1.) Design Criteria 300-ft tower at Oakdale CT
2.) Structural Calculations: 300-ft tower at Oakdale CT

DESIGN CRITERIA

SubCarrier Communications Site: Oakdale Site #4048
Verizon Wireless Site ID: 5000977596-VZW / Montville West CT
 Location: 401 Chapel Hill Road, Village of Oakdale, CT 06370
 Latitude N 41° 28' 07" / Longitude W 72° 12' 12"
 New London County, CT

DESIGN STANDARDS

2022 Connecticut State Building Code
ANSI/TIA-222-H

Wind Speed (Ultimate 3-Second Gust) $V_{ULT} = 125$ mph
Structure Class II; Exposure 'B' Topographic Category 1

In addition to the loads from the existing tower framing and platforms the loads from the following antennas and their associated transmission lines were considered in the analysis.

Existing ANTENNA CONFIGURATION (Used for Structural Analysis)

(Note: A.T.B.P. = Above Tower Base Plate)

Existing Customer Antennas - To Remain on Tower

- **Calvary Chapel** One (1) SWR-FM1 Low Power FM Antenna (ERP 250W) mounted on antenna platform at 300-ft A.T.B.P. with one (1) run of 0.5-inch dia. coaxial cable from the antenna down to grade.
- **Tactical Communications** Two (2) RFS Model # DB-408 UHF omni antennas mounted at 100-ft A.T.B.P. with total of two (2) runs of 0.875-inch dia. coax cable from the antennas down to grade.

Existing United States Coast Guard Antennas - To Remain on Tower

- 1.) One (1) ADD090S Direction Finder Antenna mounted at 280-ft above tower base plate with two associated runs of 0.875 inch diameter coaxial cable and one run of AWG24 control cable.
- 2.) One (1) SRL235-2 VHF antenna mounted at 255-ft A.T.B.P. with one run of 0.875-inch dia. coax cable.
- 3.) One (1) SRL335-2 UHF antenna mounted at 255-ft A.T.B.P. with one run of 0.875-inch dia. coax cable.
- 4.) One (1) SRL235-2 VHF antenna mounted at 220-ft A.T.B.P. with two runs of 0.875-inch dia. coax cable.

(All SRL antennas to be mounted on 6-ft side-arms)

NOTE: To reduce tower loading, the wind loads due to cable ladder for the above cables not included in our analysis. The proposed USCG vertical cables were to be installed using leg-mounted brackets instead of a cable ladder.

Existing T-Mobile Equipment Configuration at 180-ft A.T.B.P.

All T-Mobile Equipment at 180-ft assumed to be mounted on (3) Sector Frames- Site-ProVFA6-RRU or equiv.

Three (3) panel antennas Ericsson AIR32 DRD901146-1_B66A_B2A (56.6" x 12.9" x 8.7")

Three (3) panel antennas Ericsson APXVAALL24_43-U-NA20 (96.6" x 24" x 8.7")

Three (3) radios Ericsson AIR 6449 B41 (33.1 x 20.5 x 8.3)

Three (3) radios Ericsson RRU 4449 B71+B85 Radio 4449 B12+B71 (13.2 x 15 x 9.25)

Three (3) radios Ericsson RRU 4415 B25 (14.9" x 13.2" x 5.4")

Six (6) hybrid cables Huber + Suhner HYBRIFLEX 6x12 (size 1-1/4" = 1.54" o.d.) from grade to 180-ft.

These cables will be supported on a 30"+/- wide cable ladder (w/(2) L1.5"x 1.5" rails) from grade to 180-ft AGL

(Continued On Next Page)



Communication Structures Engineering, Inc.

DESIGN CRITERIA (Continued)

SubCarrier Communications Site: Oakdale Site #4048
Verizon Wireless Site: 5000977596-VZW / Montville West CT

Verizon Wireless - New (Proposed Configuration) Antennas & Lines

This equipment will be mounted on (3) Site Pro VFA12 XDS Sector Frames mounted on the existing tower legs at approximately 160-ft AGL and oriented at azimuths 50 degrees, 170 degrees, & 290 degrees.

Item #	Description (Type)	Qty	Manufacturer	Model #	Wt/Ea	Height ft Approx	Transmission Line(s)
1	Panel Antennas	6	JMA Wireless	MX06FHG665-HG (72"x12.2" x7.5")	41 lbs	160-ft	(6) Hybriflex Cables 3 x 6 (1.2" o.d.)
2	Panel Antennas	3	Samsung	MT6413-77A (16"x 29"x 5.5")	58 lbs		
3	13-ft Sector Frames	3	Site-Pro	VFA12 XDS (13-ft x 6-ft x 3'-9")	800 lbs		
4	OVP Hybrid breakout box	6	Raycap	RTH-0306-PFC (12.5"x 9.7"x 5.5")	11 lbs		
5	RRU	3	Samsung	RF4461d-13A (15 in x 15 in x 10.3 in)	80 lbs		
6	RRU	3	Samsung	RF4801d-25A (20.6in x15.7in x 7.0in)	88 lbs		
7	Dual Mount Antenna Bracket	1	JMA Wireless	JMA - 91900314	28 lbs		

Standard Conditions for CSEI's Structural Analysis

In the absence of information contrary, CSEI considers that all structures were constructed in accordance with the drawings and specifications and are in an un-corroded condition and have not deteriorated. We, therefore consider that their capacity has not significantly changed from the original designed conditions.

The loads stated in the Design Criteria above include the applicable overall tower dead and wind loads from the listed customer antennas and transmission lines that were provided to CSEI. CSEI's structural analysis applies these loads at the tower truss panel points (joints where tower braces connect) that are closest to the customer equipment location. The attachment of the individual customer's equipment is not a part of CSEI's scope of work. CSEI assumes that these attachments, in accordance with good engineering practice, will be designed and installed to properly connect close to the tower panel points in such a manner as to not introduce significant local stresses to the existing tower bracing members. The design and installation of all customers' antenna & cable mounts and their proper connections to this tower are solely the responsibility of the individual customers and their engineers, suppliers & contractors.



Communication Structures Engineering, Inc.



COMMUNICATION STRUCTURES ENGINEERING, INC.
5579-B Chamblee Dunwoody Rd. /Suite 517
Dunwoody, GA 30338 (770) 951-8080

TOWER STRUCTURAL CALCULATIONS

SubCarrier Communications ID: Oakdale Site#4048
Verizon Site ID: 5000977596-VZW / Montville West CT

Existing 300-ft Self Supporting Lattice Steel Tower
Location: 401 Chapel Hill Road, Village of Oakdale, CT 06370

Issue Date: December 04, 2025

TABLE OF CONTENTS

	<u>Pages</u>
Design Criteria	1 to 5
Computer Model	6
Summary Tower Component Stresses vs. Capacity.....	7
Tower Calculation Summary Output	8 to 22
Tower Foundation Review	23

DESIGN CRITERIA

SubCarrier Communications Site: Oakdale Site #4048
Verizon Wireless Site: 5000977596-VZW / Montville West CT
 Location: 401 Chapel Hill Road, Village of Oakdale, CT 06370
 Latitude N 41° 28' 07"/ Longitude W 72° 12' 12" New London County, CT

DESIGN STANDARDS

2022 Connecticut State Building Code
 ANSI/TIA-222-H

Wind Speed (Ultimate 3-Second Gust) $V_{ULT} = 125$ mph
 Structure Class II; Exposure 'B' Topographic Category 1

In addition to the loads from the existing tower framing and platforms the loads from the following antennas and their associated transmission lines were considered in the analysis.

Existing ANTENNA CONFIGURATION (Used for Structural Analysis)

Existing Customer Antennas - To Remain on Tower

- **Calvary Chapel** One (1) SWR-FM1 Low Power FM Antenna (ERP 250W) mounted on antenna platform at 300-ft A.T.B.P. with one (1) run of 0.5-inch dia. coaxial cable from the antenna down to grade.
- **Tactical Communications** Two (2) RFS Model # DB-408 UHF omni antennas mounted at 100-ft A.T.B.P with total of two (2) runs of 0.875-inch dia. coax cable from the antennas down to grade.

Existing United States Coast Guard Antennas - To Remain on Tower

- 1.) One (1) ADD090S Direction Finder Antenna mounted at 280-ft above tower base plate with two associated runs of 0.875 inch diameter coaxial cable and one run of AWG24 control cable.
 - 2.) One (1) SRL235-2 VHF antenna mounted at 255-ft A.T.B.P. with one run of 0.875-inch dia. coax cable.
 - 3.) One (1) SRL335-2 UHF antenna mounted at 255-ft A.T.B.P. with one run of 0.875-inch dia. coax cable.
 - 4.) One (1) SRL235-2 VHF antenna mounted at 220-ft A.T.B.P with two runs of 0.875-inch dia. coax cable.
- (All SRL antennas to be mounted on 6-ft side-arms)

Existing T-Mobile Equipment Configuration at 180-ft A.T.B.P.

All T-Mobile Equipment at 180-ft assumed to be mounted on (3) Sector Frames- Site-ProVFA6-RRU or equiv.
 Three (3) panel antennas Ericsson AIR32 DRD901146-1_B66A_B2A (56.6" x 12.9" x 8.7")
 Three (3) panel antennas Ericsson APXVAALL24_43-U-NA20 (96.6" x 24" x 8.7")
 Three (3) radios Ericsson AIR 6449 B41 (33.1 x 20.5 x 8.3)
 Three (3) radios Ericsson RRU 4449 B71+B85 Radio 4449 B12+B71 (13.2 x 15 x 9.25)
 Three (3) radios Ericsson RRU 4415 B25 (14.9" x 13.2" x 5.4")

Six (6) hybrid cables Huber + Suhner HYBRIFLEX 6x12 (size 1-1/4" = 1.54" o.d.) from grade to 180-ft.
 These cables will be supported on a 30"+/- wide cable ladder (w/2) L1.5"x 1.5" rails) from grade to 180-ft AGL

Verizon Wireless - New (Proposed Configuration) Antennas & Lines

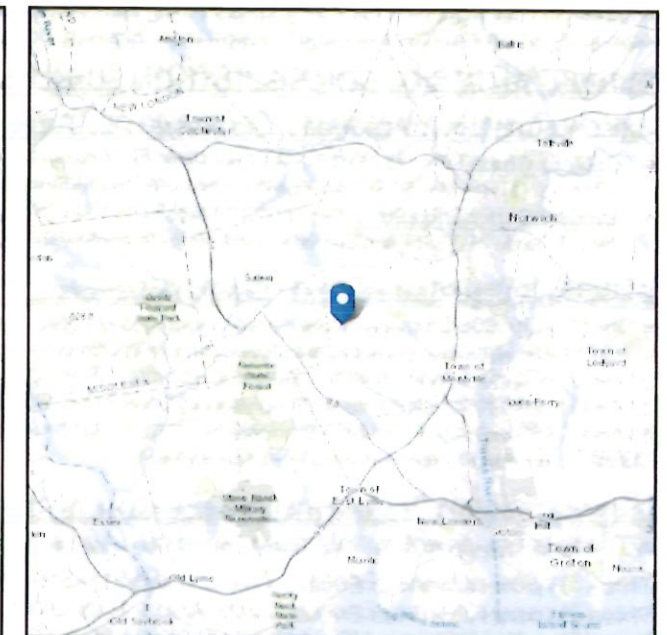
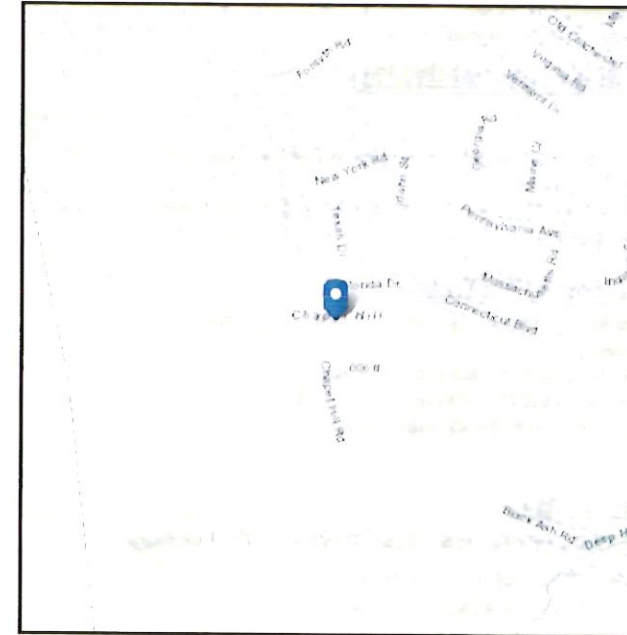
This equipment will be mounted on (3) Site Pro VFA12 XDS Sector Frames mounted on the existing tower legs at approximately 160-ft AGL and oriented at azimuths 50 degrees, 170 degrees, & 290 degrees.

Item #	Description (Type)	Qty	Manufacturer	Model #	Wt/Ea	Height ft Approx	Transmission Line(s)
1	Panel Antennas	6	JMA Wireless	MX06FHG665-HG (72"x12.2" x7.5")	41 lbs	160-ft	(6) Hybriflex Cables 3 x 6 (1.2" o.d.)
2	Panel Antennas	3	Samsung	MT6413-77A (16"x 29"x 5.5")	58 lbs		
3	13-ft Sector Frames	3	Site-Pro	VFA12 XDS (13-ft x 6-ft x 3'-9")	800 lbs		
4	OVP Hybrid breakout box	6	Raycap	RTH-0306-PFC (12.5"x 9.7"x 5.5")	11 lbs		
5	RRU	3	Samsung	RF4461d-13A (15 in x 15 in x 10.3 in)	80 lbs		
6	RRU	3	Samsung	RF4801d-25A (20.6in x15.7in x 7.0in)	88 lbs		
7	Dual Mount Antenna Bracket	1	JMA Wireless	JMA - 91900314	28 lbs		

Address:
401 Chapel Hill Rd
Oakdale, Connecticut
06370

Standard: ASCE/SEI 7-16
Risk Category: II
Soil Class: D - Stiff Soil

Latitude: 41.468973
Longitude: -72.203524
Elevation: 604.2454129447765 ft
(NAVD 88)



Wind

Results:

Wind Speed	124 Vmph
10-year MRI	75 Vmph
25-year MRI	85 Vmph
50-year MRI	96 Vmph
100-year MRI	102 Vmph

Data Source: ASCE/SEI 7-16, Fig. 26.5-1B and Figs. CC.2-1–CC.2-4, and Section 26.5.2

Date Accessed: Fri Aug 29 2025

Value provided is 3-second gust wind speeds at 33 ft above ground for Exposure C Category, based on linear interpolation between contours. Wind speeds are interpolated in accordance with the 7-16 Standard. Wind speeds correspond to approximately a 7% probability of exceedance in 50 years (annual exceedance probability = 0.00143, MRI = 700 years).

Site is in a hurricane-prone region as defined in ASCE/SEI 7-16 Section 26.2. Glazed openings need not be protected against wind-borne debris.