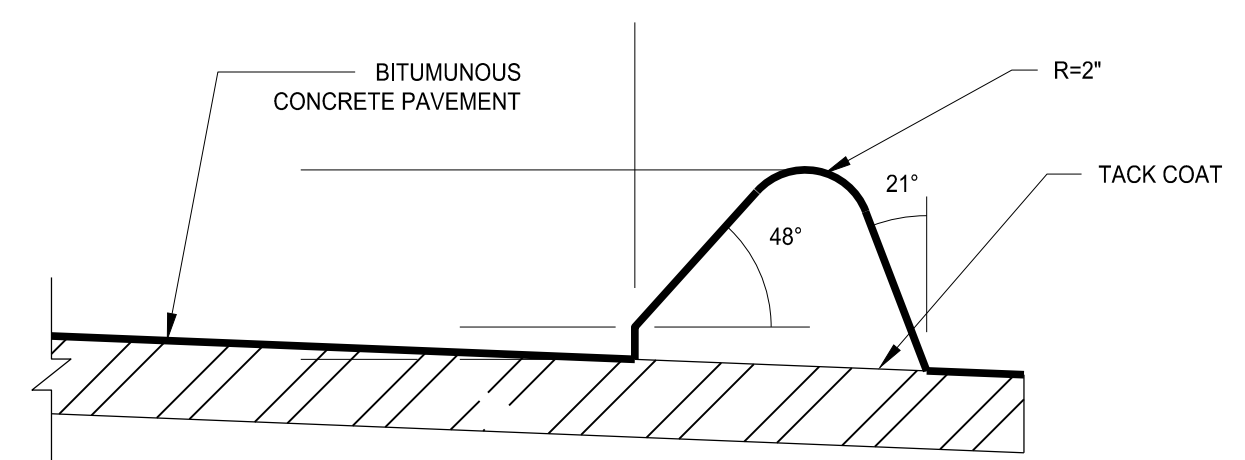


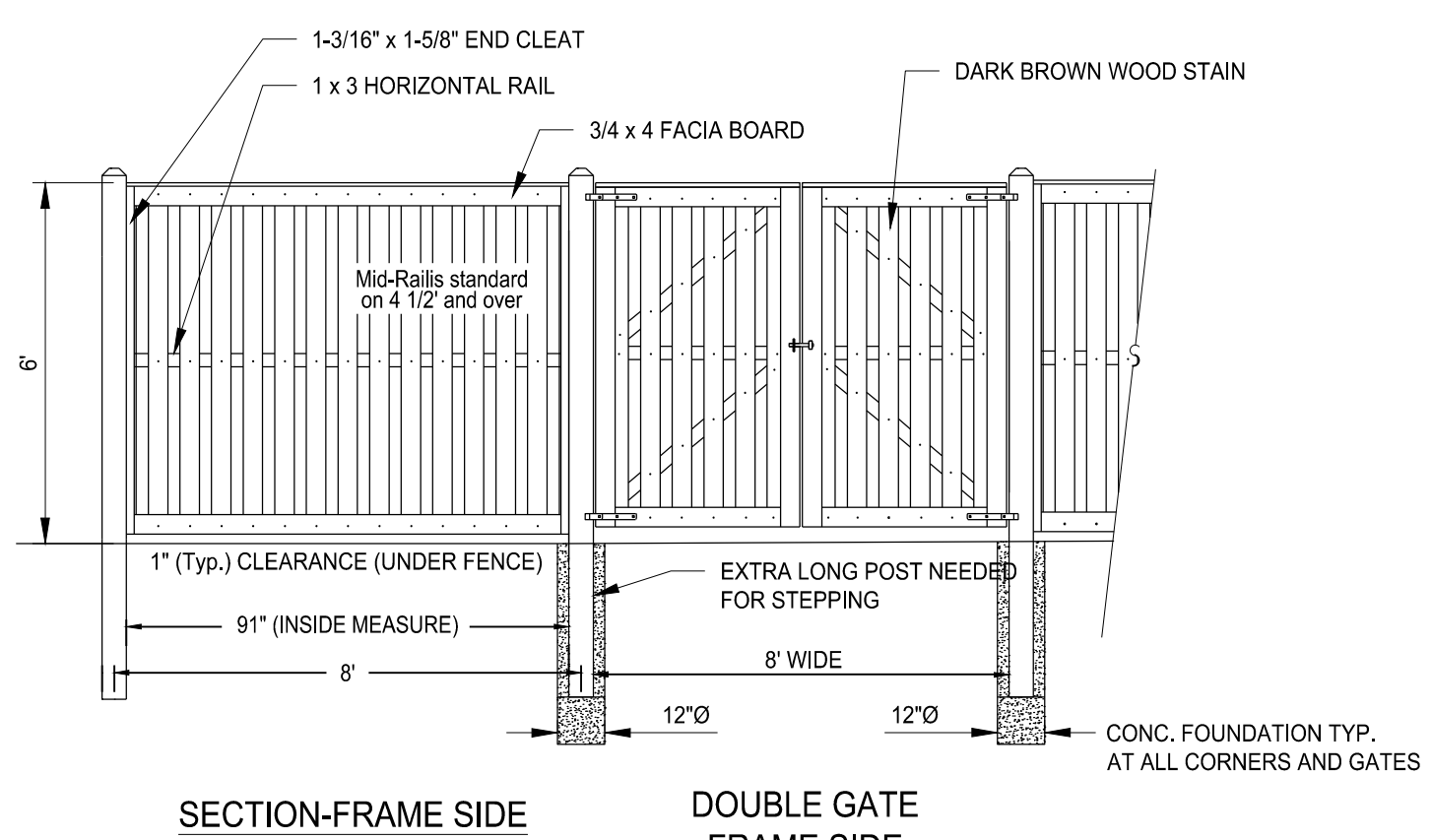
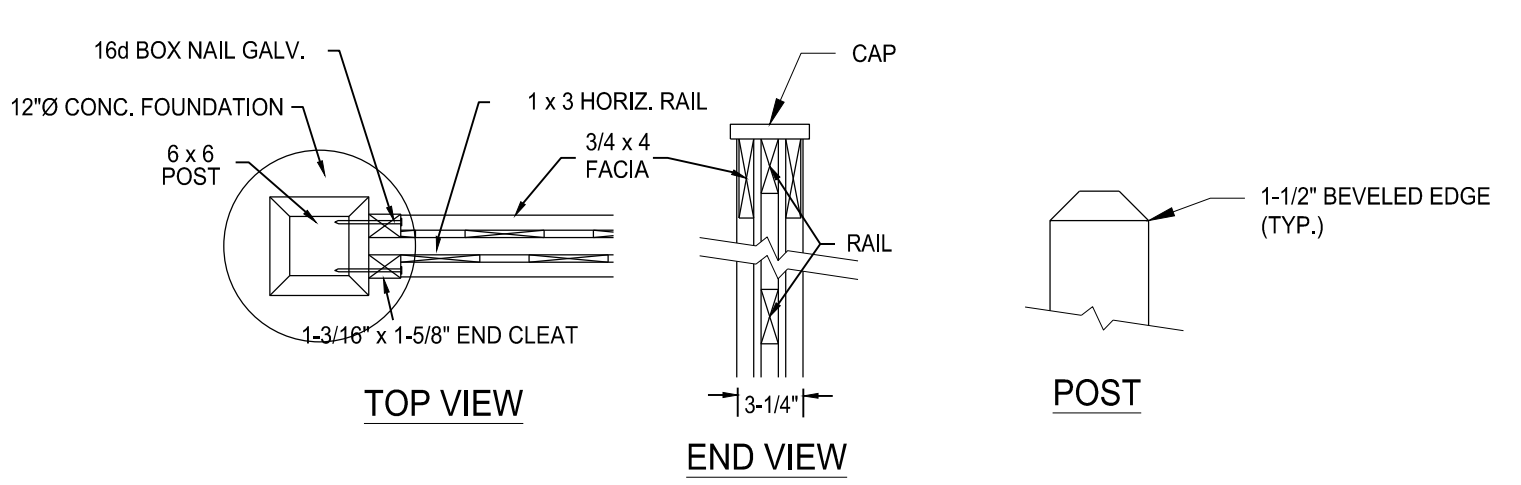
PAVING DETAILS

SCALE: NTS



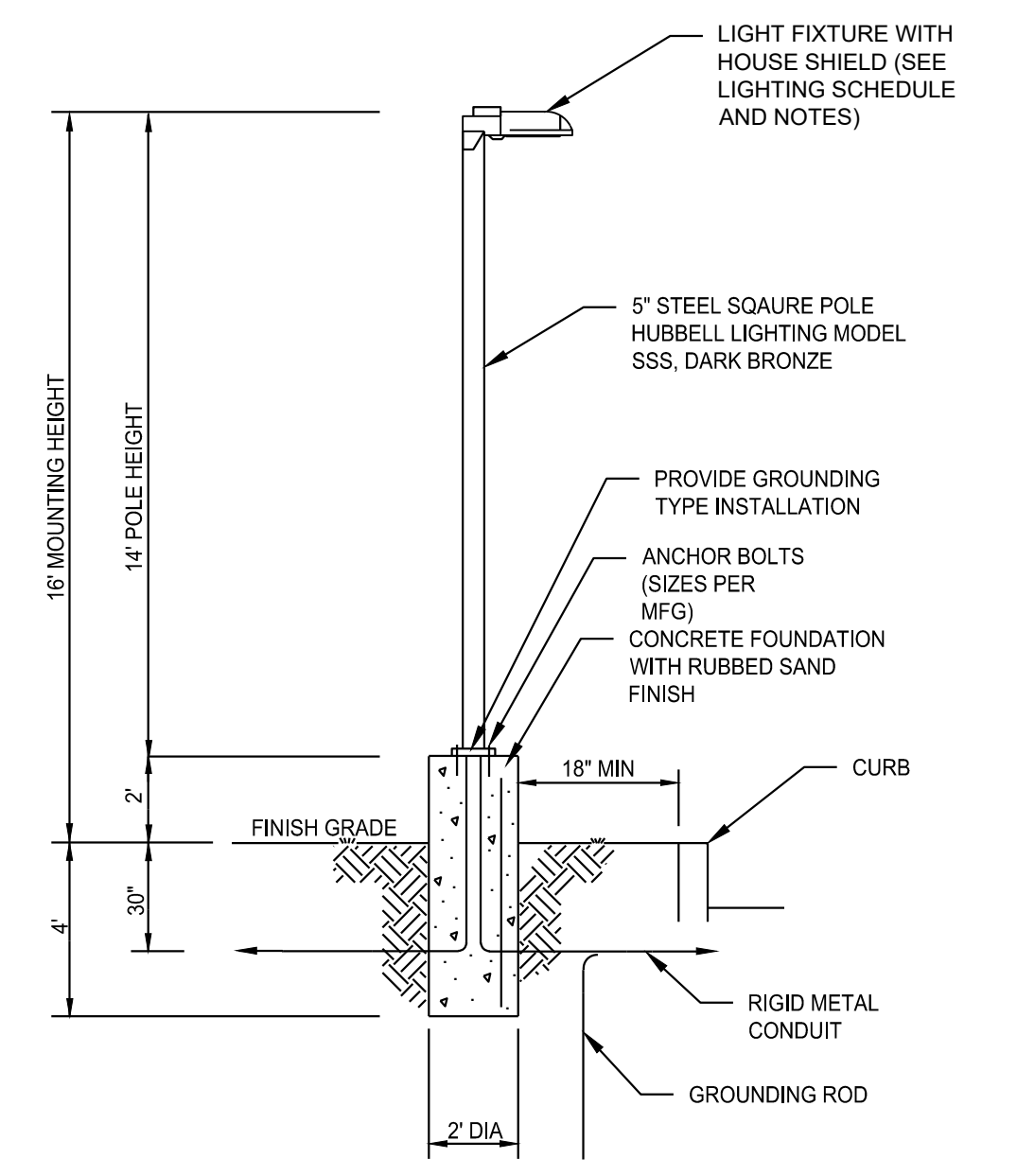
EXTRUDED BITUMINOUS CONCRETE LIP CURBING DETAIL

SCALE: NTS  
DETAIL PER TOWN OF MONROE DPW STANDARD DRAWINGS



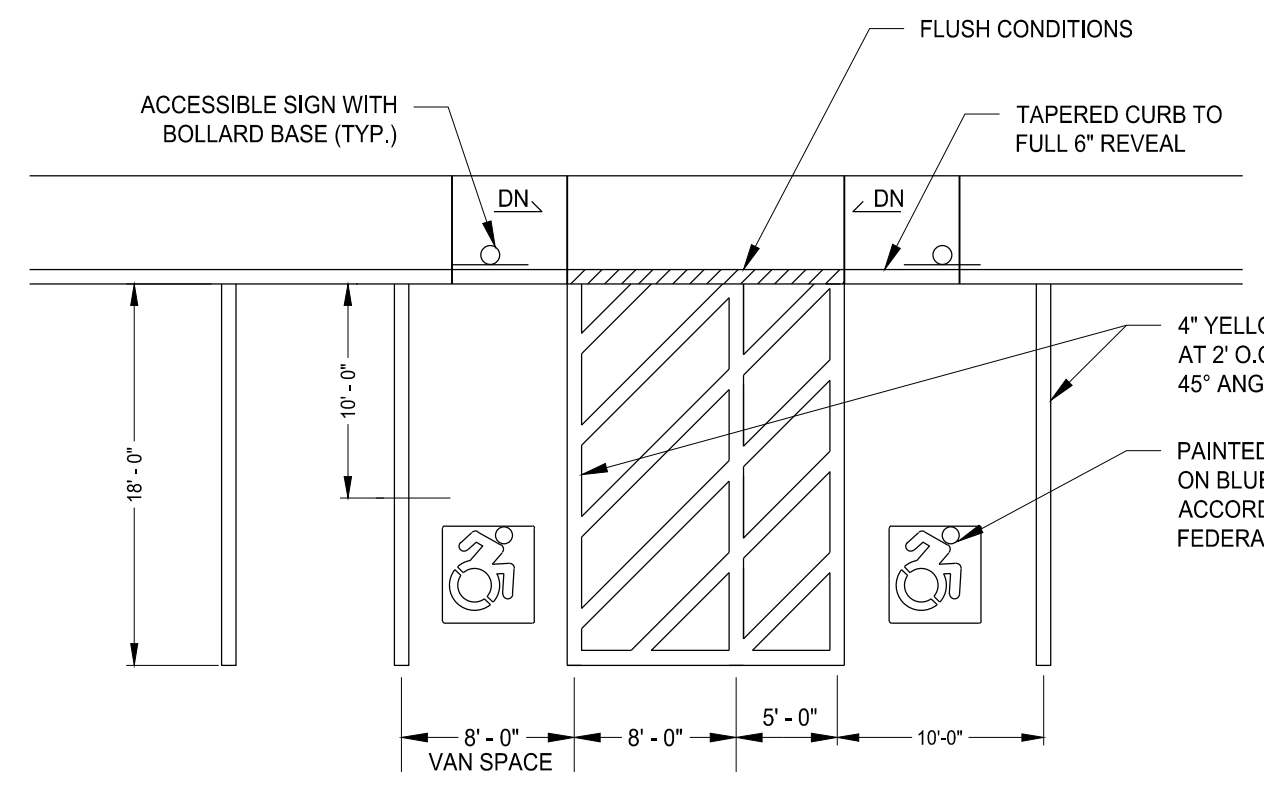
DUMPSTER PAD ENCLOSURE - BOARD ON BOARD FENCE

SCALE: NTS



PROPOSED LIGHT POLE - P1

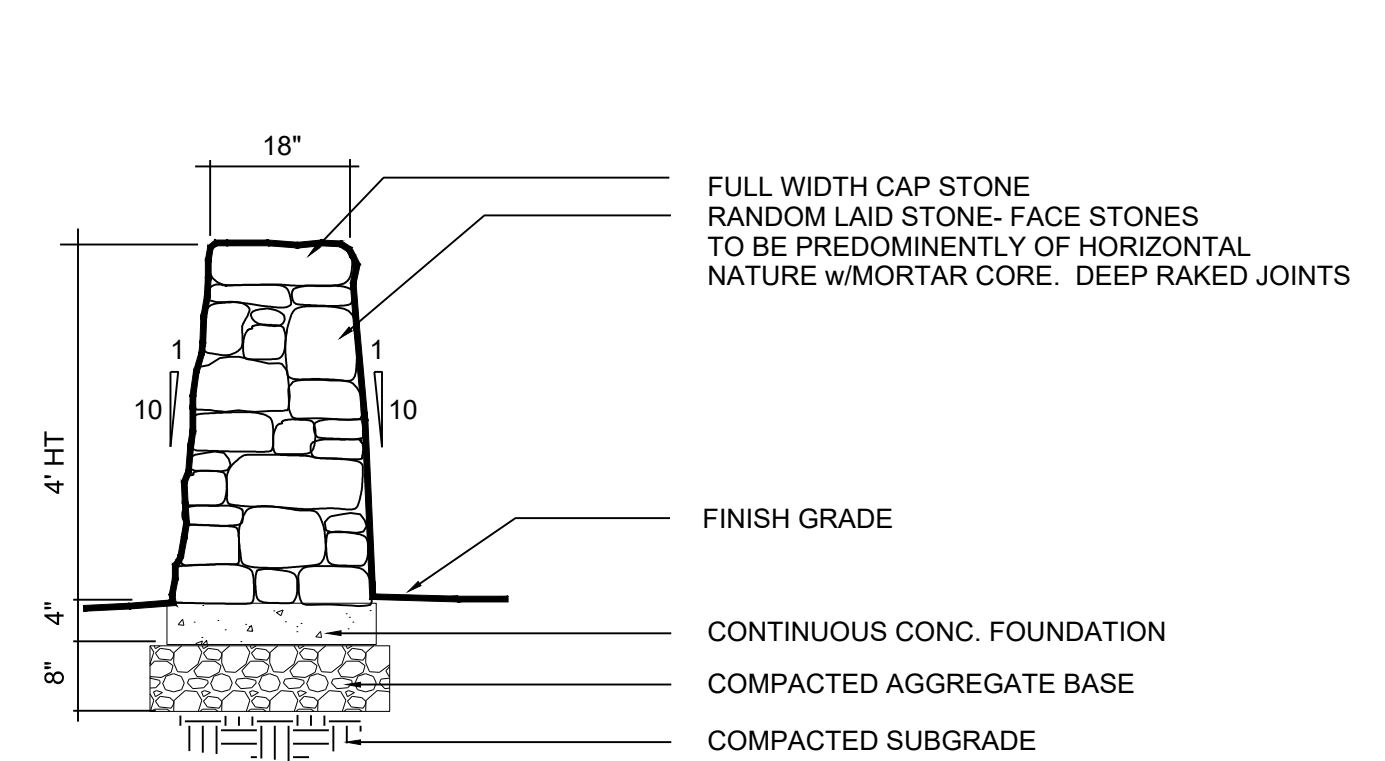
SCALE: NTS



TYPICAL ACCESSIBLE PARKING SPACE DETAIL

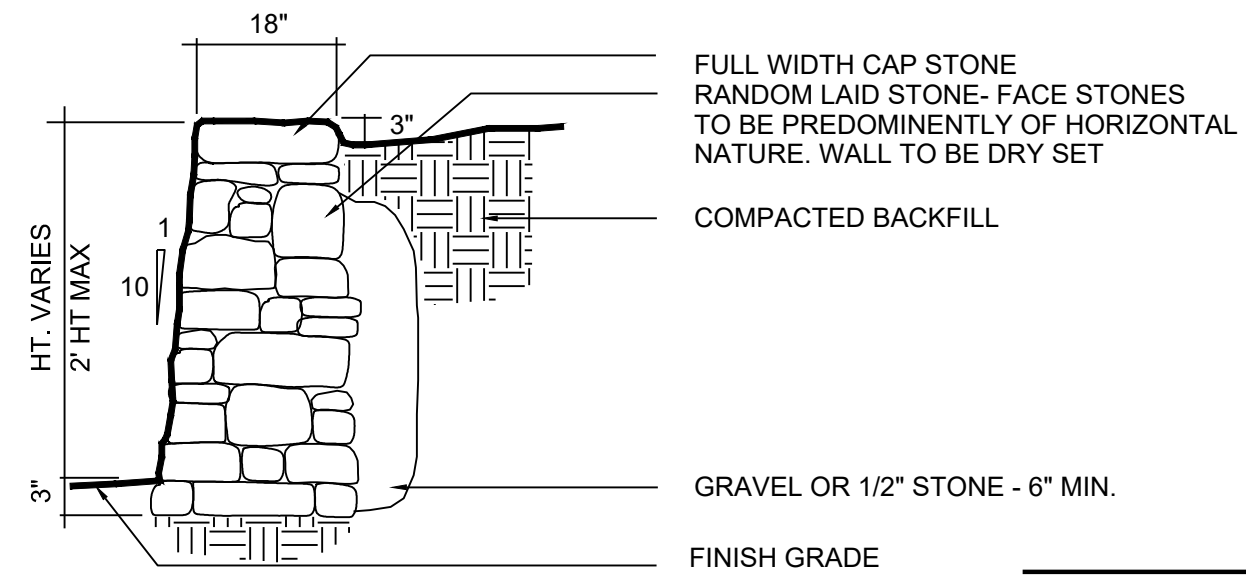
SCALE: NTS

- NOTES  
1. SEE SITE PLAN FOR ACCESSIBLE SPACE LOCATIONS  
2. PROVIDE 2 COATS OF PAINT ON ALL SURFACES.



DRYSET STONE WALL

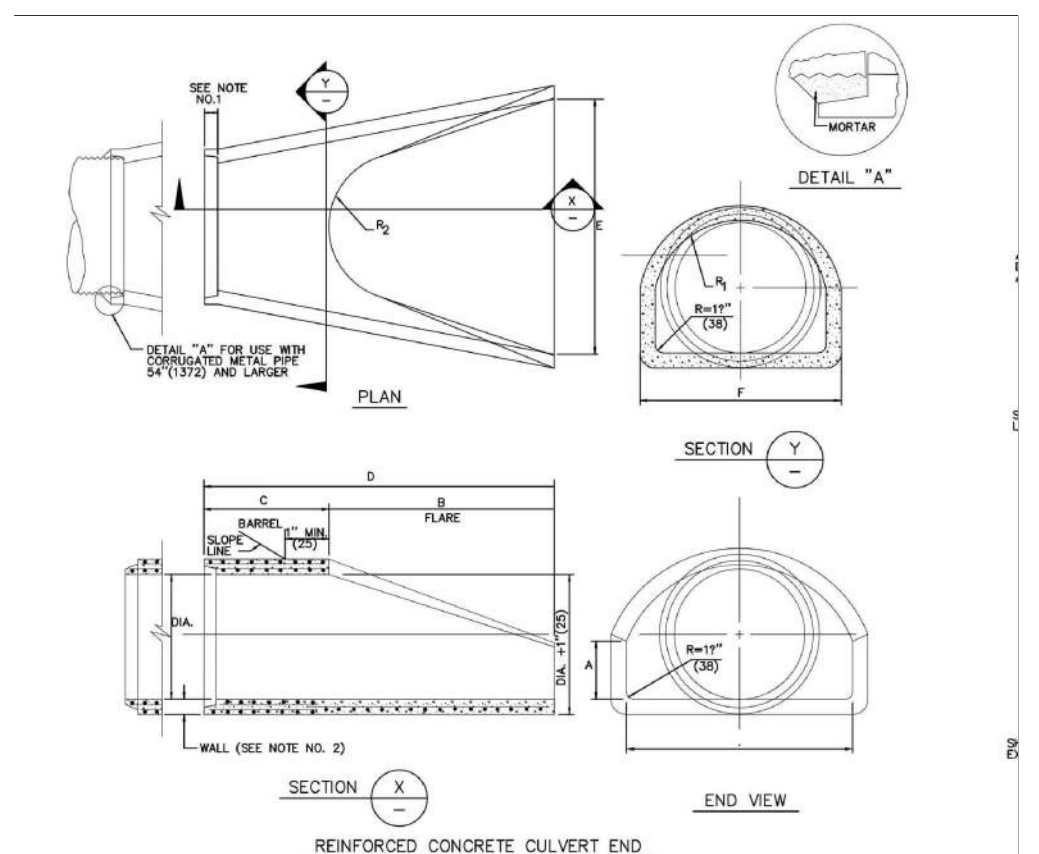
SCALE: NOT TO SCALE



PROPOSED ACCENT LIGHT - AL1

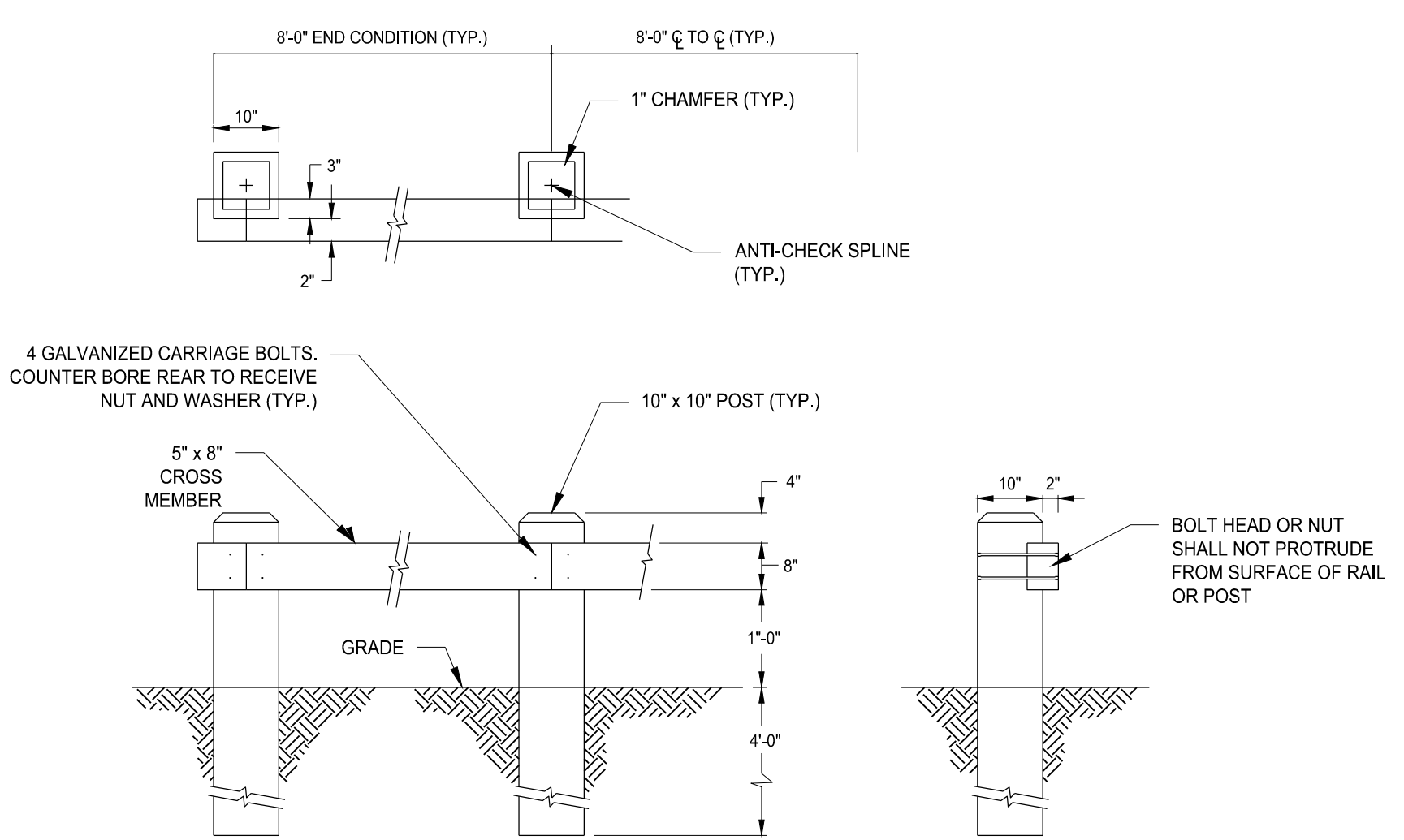
SCALE: NTS

All dimensions are inches (centimeters) unless otherwise indicated.



DIA.	DIMENSIONS FOR REINFORCED CONCRETE CULVERT END						REINFORCEMENT	
	A	B	C	D	E	F	#4	#5
18"	10"	10"	10"	10"	10"	10"	4	4
24"	14"	14"	14"	14"	14"	14"	6	6
30"	18"	18"	18"	18"	18"	18"	8	8
36"	22"	22"	22"	22"	22"	22"	10	10
42"	26"	26"	26"	26"	26"	26"	12	12
48"	30"	30"	30"	30"	30"	30"	14	14

NOTE: ROUTINELY MAINTAIN ALL DRAINAGE SYSTEM COMPONENTS AS SPECIFIED IN "APPENDIX O" OPERATIONS AND MAINTENANCE PLAN" IN THE ENGINEERING REPORT FOR THE LIFE OF THE DRAINAGE SYSTEM



TIMBER GUIDE RAIL

SCALE: NTS

- NOTES  
1. ALL TIMBER TO BE PRESSURE TREATED CCA=0.40 PCF SOUTHERN YELLOW PINE

THIS DRAWING IS THE PROPERTY OF THE ENGINEER. IT HAS BEEN SPECIFICALLY PREPARED FOR THE OWNER FOR THIS PROJECT AT THIS SITE AND IS NOT TO BE USED FOR ANY OTHER PURPOSE, LOCATION OR OWNER WITHOUT WRITTEN CONSENT OF THE ENGINEER.

**Fuller Engineering & Land Surveying**  
525 JOHN STREET BRIDGEPORT, CT. 06604  
Office (203) 333-9465  
fax (203) 336-1769  
e-mail info@FullerSurveyors

WILTON'S WAY  
22 UNIT CONDOMINIUM DEVELOPMENT  
245 NORWICH-NEW LONDON ROAD (RT 32)  
MONTVILLE, CONNECTICUT  
PREPARED FOR  
WESTERN GROUP, LLC

Job Number:  
FE22-1700

Job Start Date:  
1/4/22

Handicap Unit	09/12/23
San Sewer/Water	03/14/24
Eversource Easement	08/05/24
Eversource Comments	09/24/24
Siteplan Modification	02/10/26
Staff Comments	02/13/26
Staff Comments	03/13/26

Drawn By: Checked By:  
D.R.R. J.E.Q.

Sheet Title:  
DETAIL SHEET

Scale:

Sheet Number:  
C-6.1

APPROVED BY THE MONTVILLE INLAND WETLAND COMMISSION

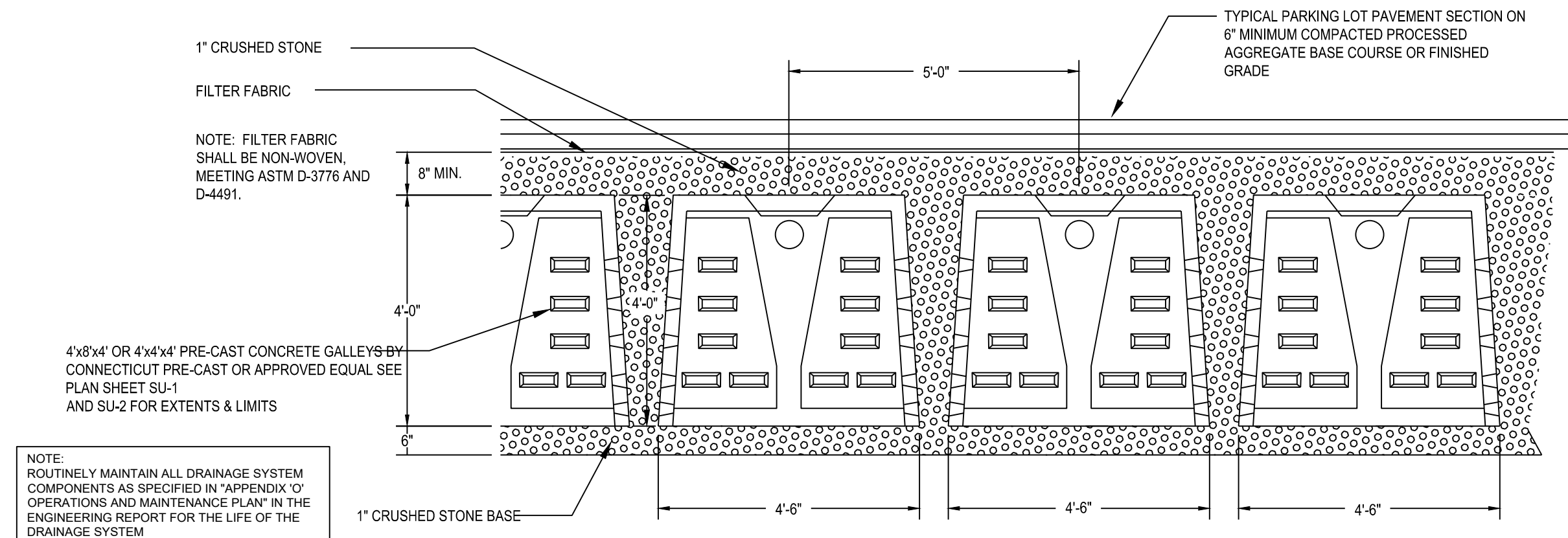
CHAIRMAN \_\_\_\_\_ DATE \_\_\_\_\_

APPROVED BY THE MONTVILLE PLANNING AND ZONING COMMISSION

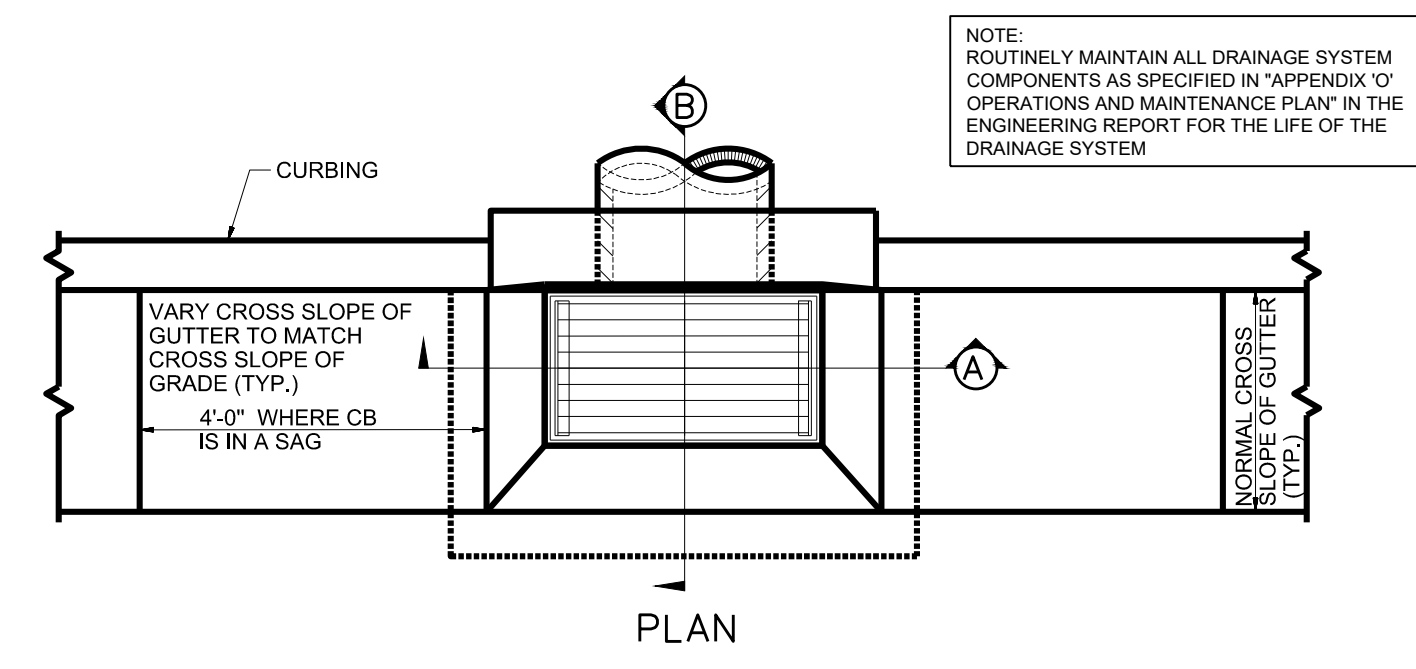
CHAIRMAN \_\_\_\_\_ DATE \_\_\_\_\_

EXPIRATION DATE \_\_\_\_\_

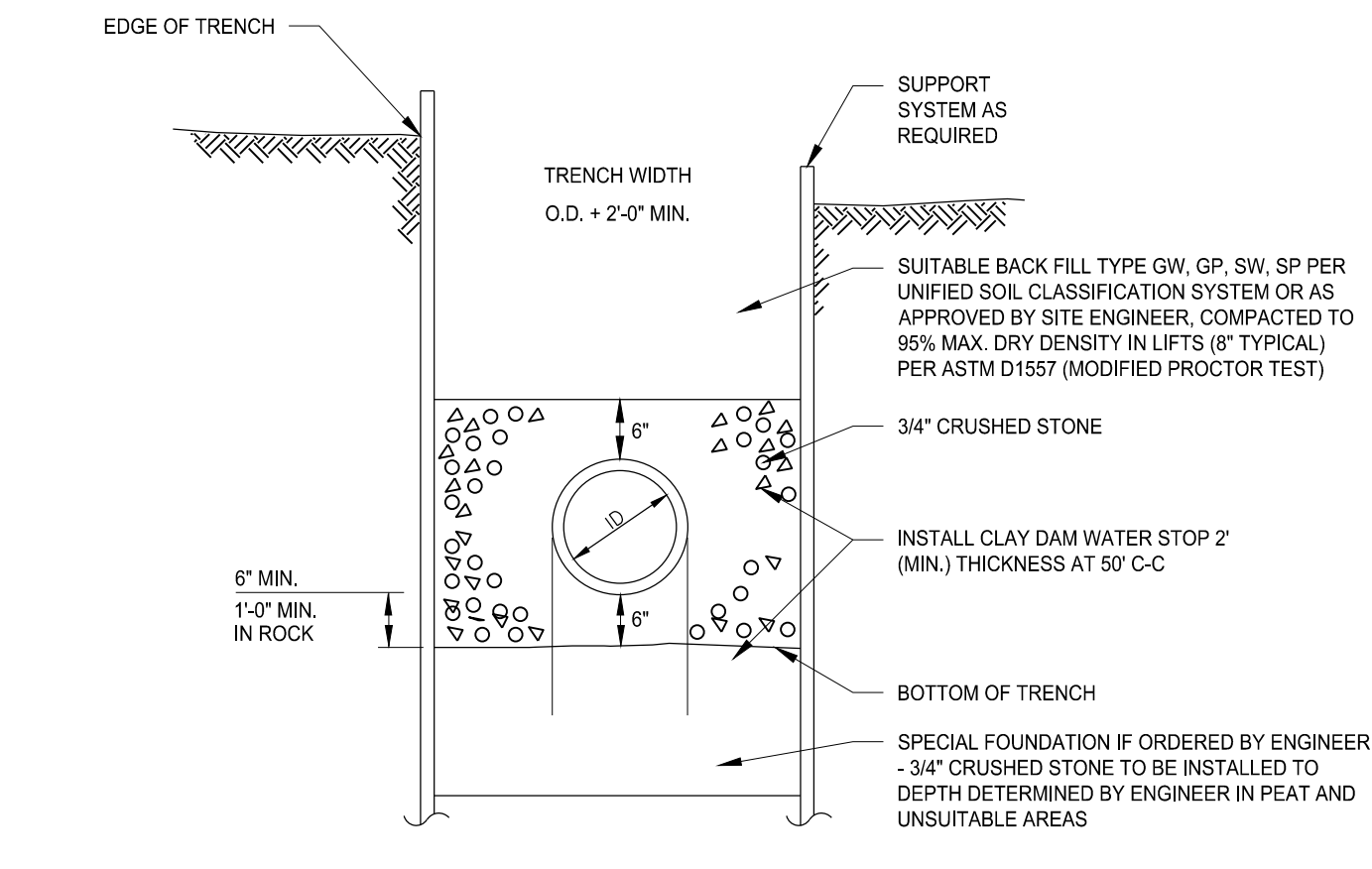
SEC PLAN APPROVAL DATE \_\_\_\_\_



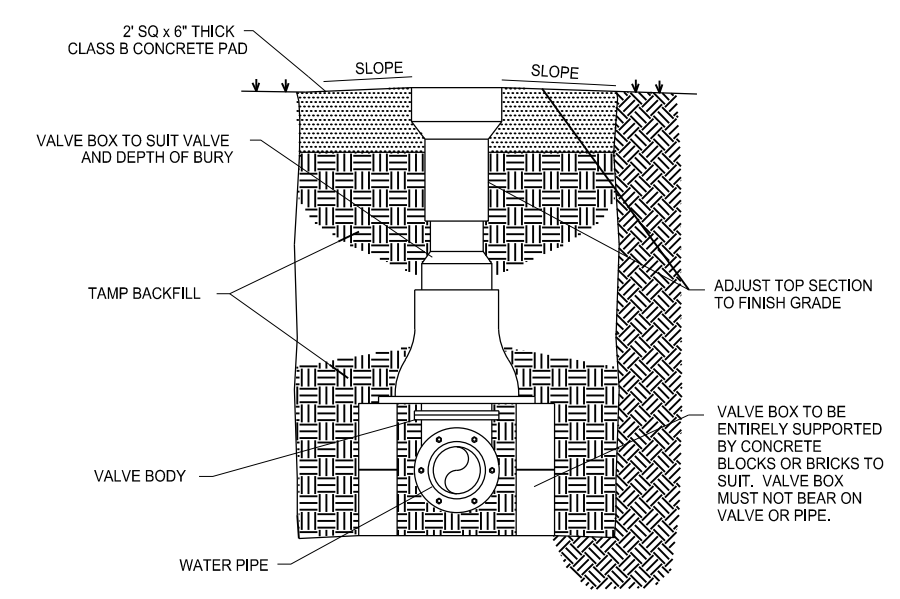
**SUBSURFACE STORM WATER RETENTION  
4'x4' PRE-CAST LEACHING GALLERY FIELD DETAIL**  
NOT TO SCALE



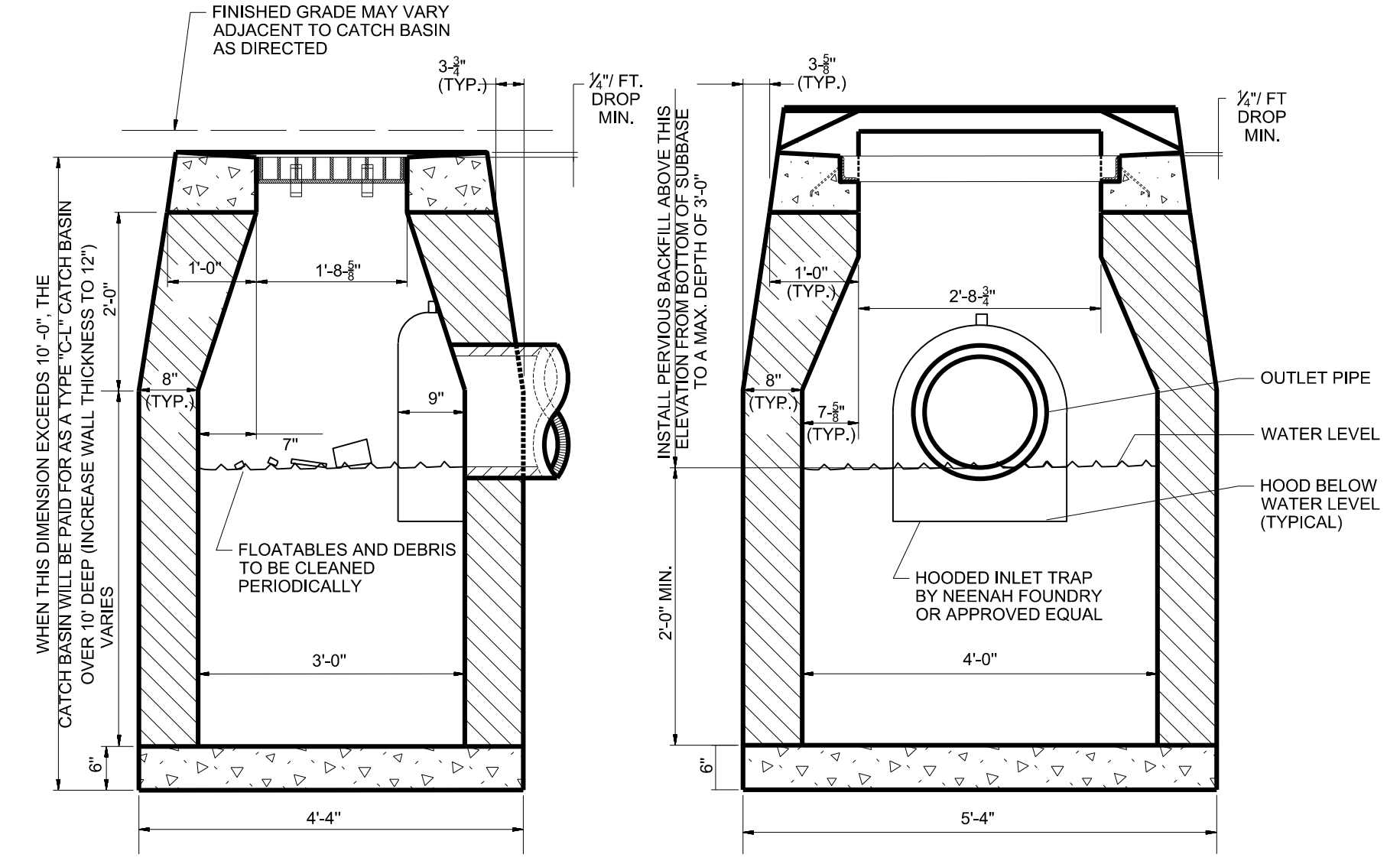
NOTE: CONCRETE COMPRESSIVE STRENGTH = 4000psi @ 28 DAYS



**TYPICAL SANITARY SEWER TRENCH SECTION**  
SCALE: NTS

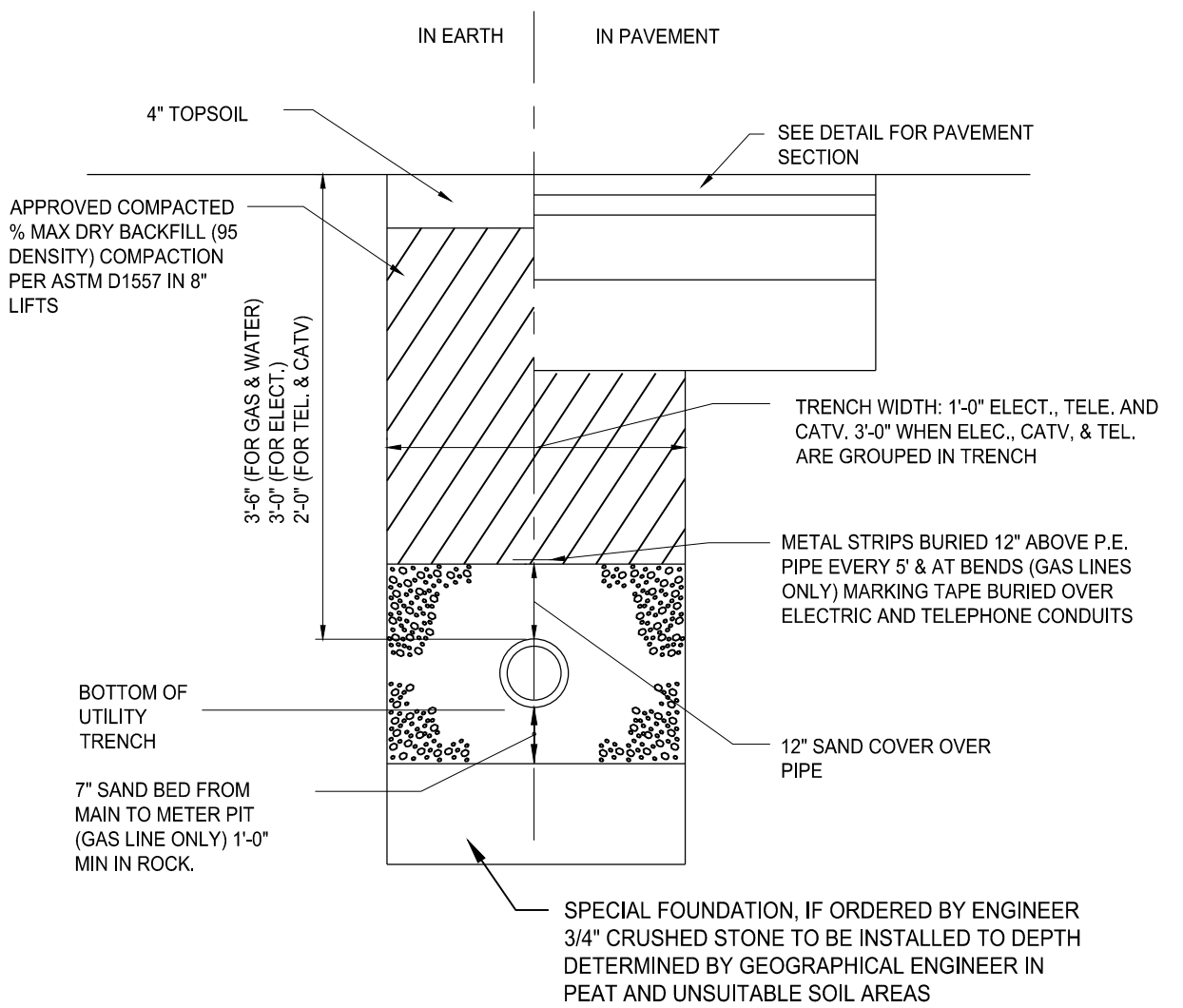


**GATE VALVE DETAIL**  
SCALE: NTS

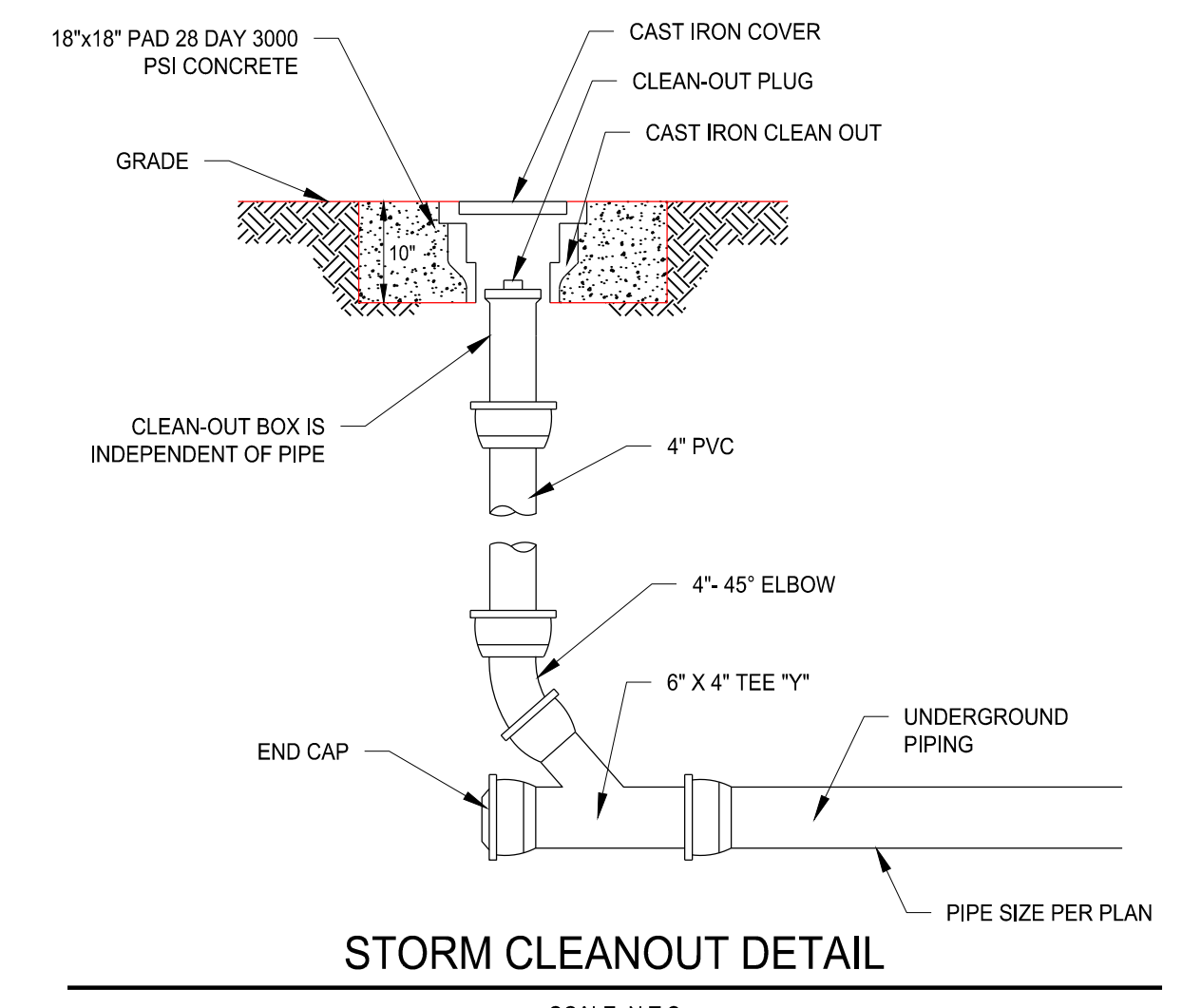


**TYPE "C-L" CATCH BASIN WITH HOODED INLET TRAP**

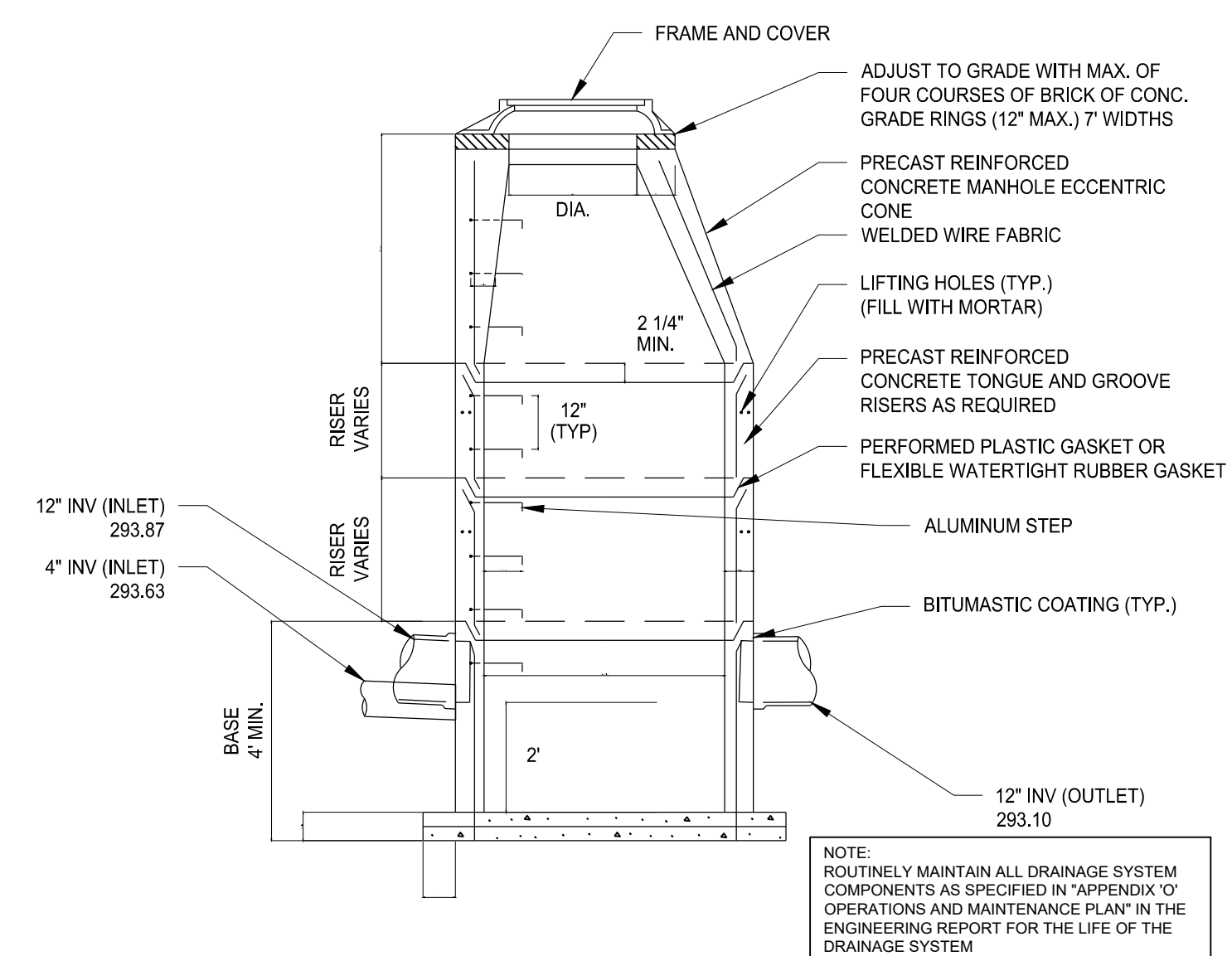
NOTE: ROUTINELY MAINTAIN ALL DRAINAGE SYSTEM COMPONENTS AS SPECIFIED IN 'APPENDIX O' OPERATIONS AND MAINTENANCE PLAN' IN THE ENGINEERING REPORT FOR THE LIFE OF THE DRAINAGE SYSTEM.



**TYPICAL UTILITY TRENCH DETAIL**  
SCALE: NTS



**STORM CLEANOUT DETAIL**  
SCALE: N.T.S



NOTES  
1. 5' OR 6' DIA. PRECAST BASES MAY BE USED WHEN REQUIRED DUE TO SIZE OR NUMBER OF PIPES AT THE MANHOLE. PRECAST REDUCERS WILL BE PLACED ABOVE THE 5' & 6' BASES AS DIRECTED BY THE ENGINEER.  
2. WALL THICKNESS TO INCREASE 1" FOR EACH 1" OF INSIDE DIAMETER INCREASE.  
3. WHEN INLET SEWER INVERT TO OUTLET SEWER INVERT ELEVATION EXCEEDS 24" USE DROP CONNECTION.

**PRECAST STORM MANHOLE**  
SCALE: NTS

APPROVED BY THE MONTVILLE INLAND WETLAND COMMISSION	
CHAIRMAN _____	DATE _____
APPROVED BY THE MONTVILLE PLANNING AND ZONING COMMISSION	
CHAIRMAN _____	DATE _____
EXPIRATION DATE _____	
SEC PLAN APPROVAL DATE _____	

THIS DRAWING IS THE PROPERTY OF THE ENGINEER. IT HAS BEEN SPECIFICALLY PREPARED FOR THE OWNER FOR THIS PROJECT AT THIS SITE AND IS NOT TO BE USED FOR ANY OTHER PURPOSE, LOCATION, OR OWNER WITHOUT WRITTEN CONSENT OF THE ENGINEER.

**Fuller Engineering & Land Surveying**  
525 JOHN STREET BRIDGEPORT, CT. 06604  
Office (203) 336-9465  
Fax (203) 336-1769  
e-mail Info@FullerSurveyors

**WILTON'S WAY**  
**22 UNIT CONDOMINIUM DEVELOPMENT**  
245 NORWICH-NEW LONDON ROAD (RT 32)  
MONTVILLE, CONNECTICUT  
PREPARED FOR  
**WESTERY GROUP, LLC**

Job Number:  
**FE22-1700**

Job Start Date:  
**1/4/22**

Handicap Unit	09/12/23
San Sewer/Water	03/14/24
Eversource Easement	08/05/24
Eversource Comments	09/24/24
Siteplan Modification	02/10/26
Staff Comments	02/13/26
Staff Comments	03/13/26

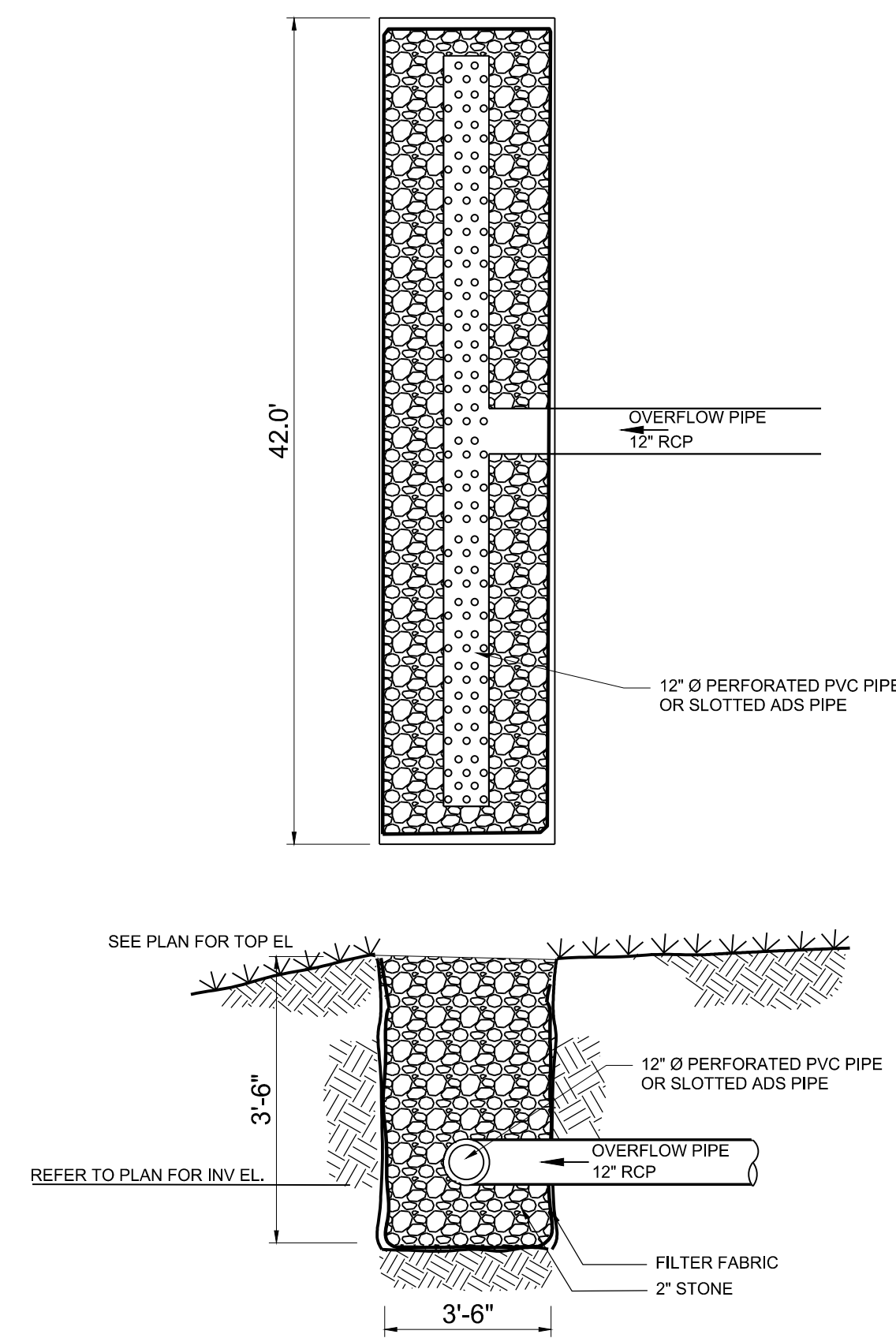
Drawn By: **Checked By:**  
D.R.R. J.E.Q.

Sheet Title:  
**DETAIL SHEET**

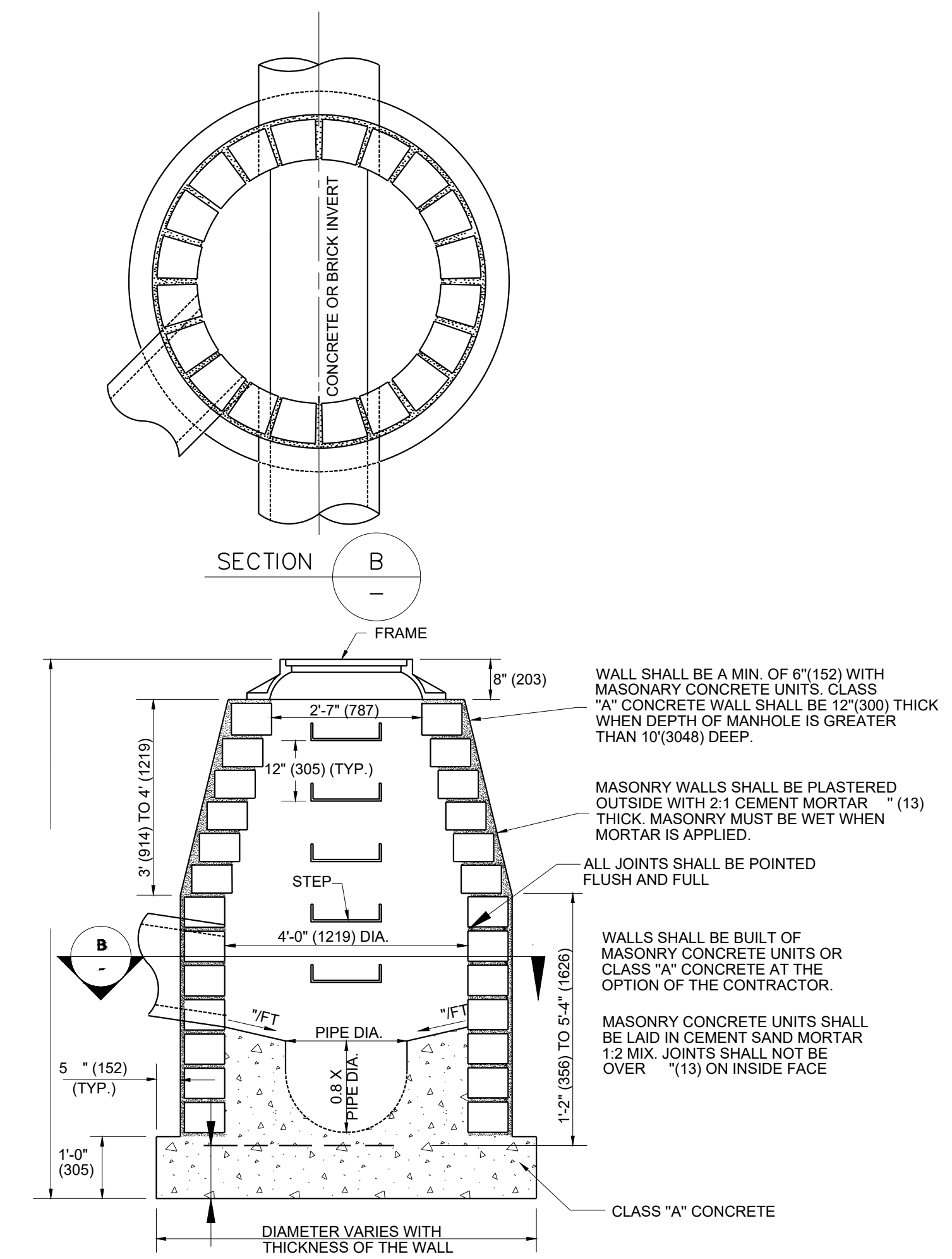
Scale:

Sheet Number:  
**C-6.2**

C:\Users\CAD\Desktop\Projects\Tennant\2023\08\_10\_FE\_10-1101\_FOX\_BIBENSON\_TERRI\_LOCATION.dwg  
 3/17/2023 2:49 PM



**LEVEL SPREADER DETAIL**  
NOT TO SCALE

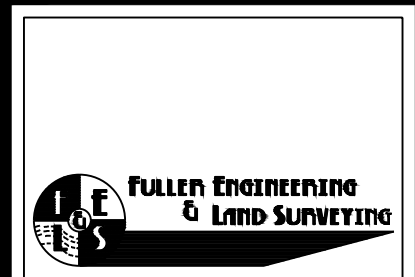


**ELEVATION**

**SANITARY MANHOLE**  
MASONRY CONCRETE UNIT  
OR CLASS "A" CONCRETE

APPROVED BY THE MONTVILLE INLAND WETLAND COMMISSION	
CHAIRMAN _____	DATE _____
APPROVED BY THE MONTVILLE PLANNING AND ZONING COMMISSION	
CHAIRMAN _____	DATE _____
EXPIRATION DATE _____	
SEC PLAN APPROVAL DATE _____	

THIS DRAWING IS THE PROPERTY OF THE ENGINEER. IT HAS BEEN SPECIFICALLY PREPARED FOR THE OWNER FOR THIS PROJECT AT THIS SITE AND IS NOT TO BE USED FOR ANY OTHER PURPOSE, LOCATION OR OWNER WITHOUT WRITTEN CONSENT OF THE ENGINEER.



525 JOHN STREET BRIDGEPORT, CT, 06604  
 Office (203) 338-6465  
 fax (203) 336-1769  
 e-mail info@FullerSurveyors

**WILTON'S WAY**  
**22 UNIT CONDOMINIUM DEVELOPMENT**  
 245 NORWICH-NEW LONDON ROAD (RT 32)  
 MONTVILLE, CONNECTICUT  
 PREPARED FOR  
**WESTERN GROUP, LLC**

Job Number:  
FE22-1700

Job Start Date:  
1/4/22

Handicap Unit	09/12/23
San Sewer/Water	03/14/24
Eversource Easement	08/05/24
Eversource Comments	09/24/24
Siteplan Modification	02/10/26
Staff Comments	02/13/26
Staff Comments	03/13/26

Drawn By: Checked By:  
D.R.R. J.E.Q.

Sheet Title:  
**DETAIL SHEET**

Scale:

Sheet Number:  
**C-6.3**