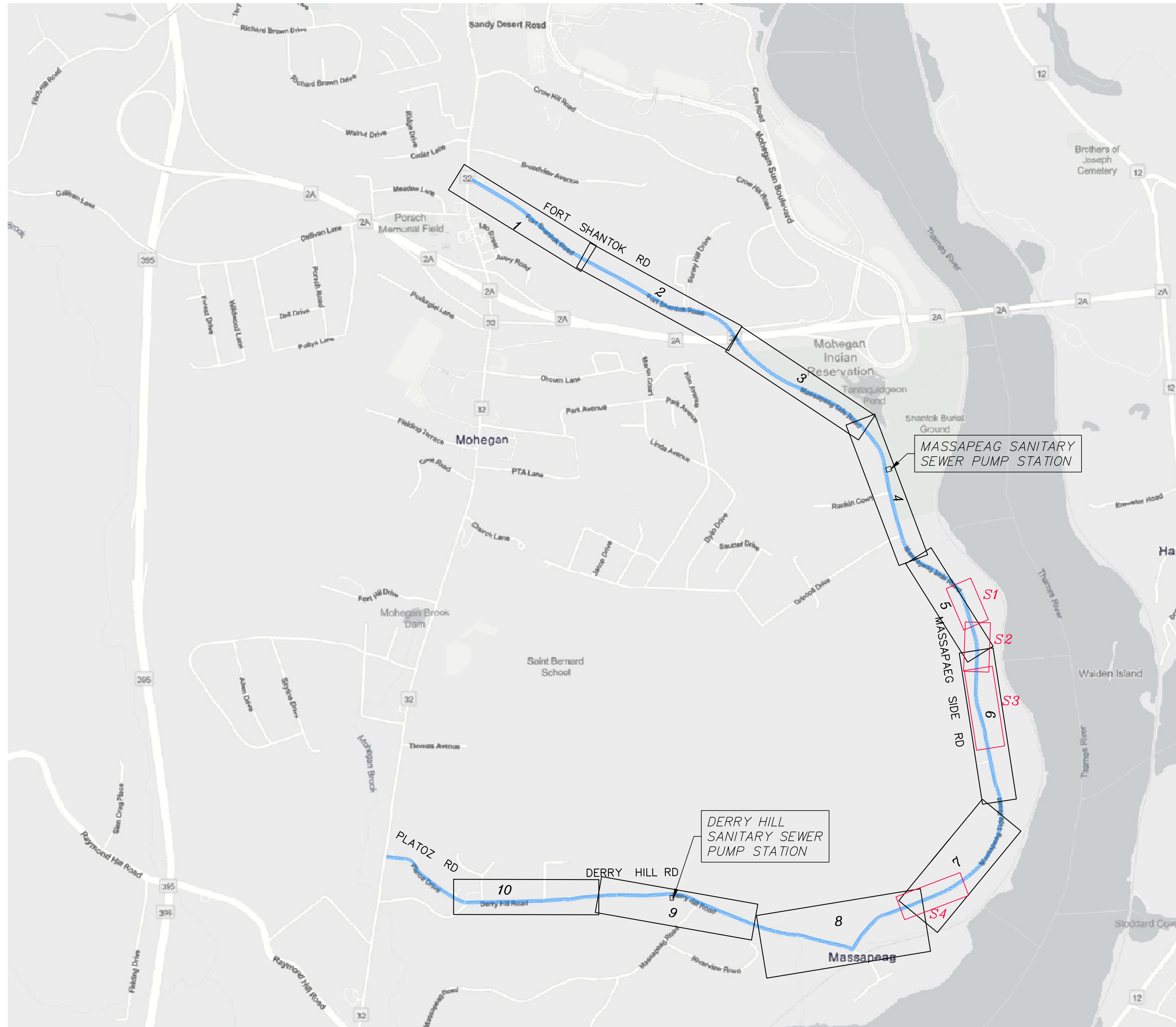


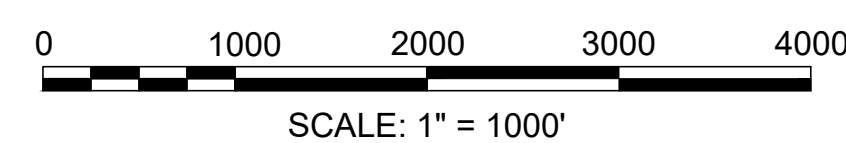
# WATER & SEWER EXTENSIONS ALL OF US AT NORTH, LLC MONTVILLE, CONNECTICUT



SHEET NO.	STATION	DESCRIPTION
WFM 1	0+00 TO 20+50	WATER MAIN DESIGN
WFM 2	20+50 TO 42+50	WATER MAIN DESIGN
WFM 3	42+50 TO 64+50	WATER MAIN DESIGN
WFM 4	64+50 TO 84+50	WATER MAIN & SANITARY SEWER FORCE MAIN DESIGN
WFM 5	84+50 TO 100+00	MAIN DESIGN & SANITARY SEWER FORCE MAIN DESIGN
WFM 6	100+00 TO 120+50	WATER MAIN & SANITARY SEWER FORCE MAIN DESIGN
WFM 7	120+50 TO 142+50	MAIN DESIGN & SANITARY SEWER FORCE MAIN DESIGN
WFM 8	142+50 TO 165+50	WATER MAIN & SANITARY SEWER FORCE MAIN DESIGN
WFM 9	165+50 TO 186+50	WATER MAIN & SANITARY SEWER FORCE MAIN DESIGN
WFM 10	186+50 TO 208+50	WATER MAIN DESIGN
S1	5+00 TO 12+21	SANITARY SEWER GRAVITY MAIN A PARCELS
S2	0+00 TO 5+00	SANITARY SEWER GRAVITY MAIN A PARCELS
S3	0+00 TO 8+50	SANITARY SEWER GRAVITY MAIN B PARCELS
S4	0+00 TO 7+50	SANITARY SEWER GRAVITY MAIN B PARCELS
D1		UTILITY TRENCH DETAILS
D2		ROADWAY RECONSTRUCTION DETAILS
D3		PAVEMENT RESTORATION PLAN

LOCUS MAP

SCALE 1" = 1000'

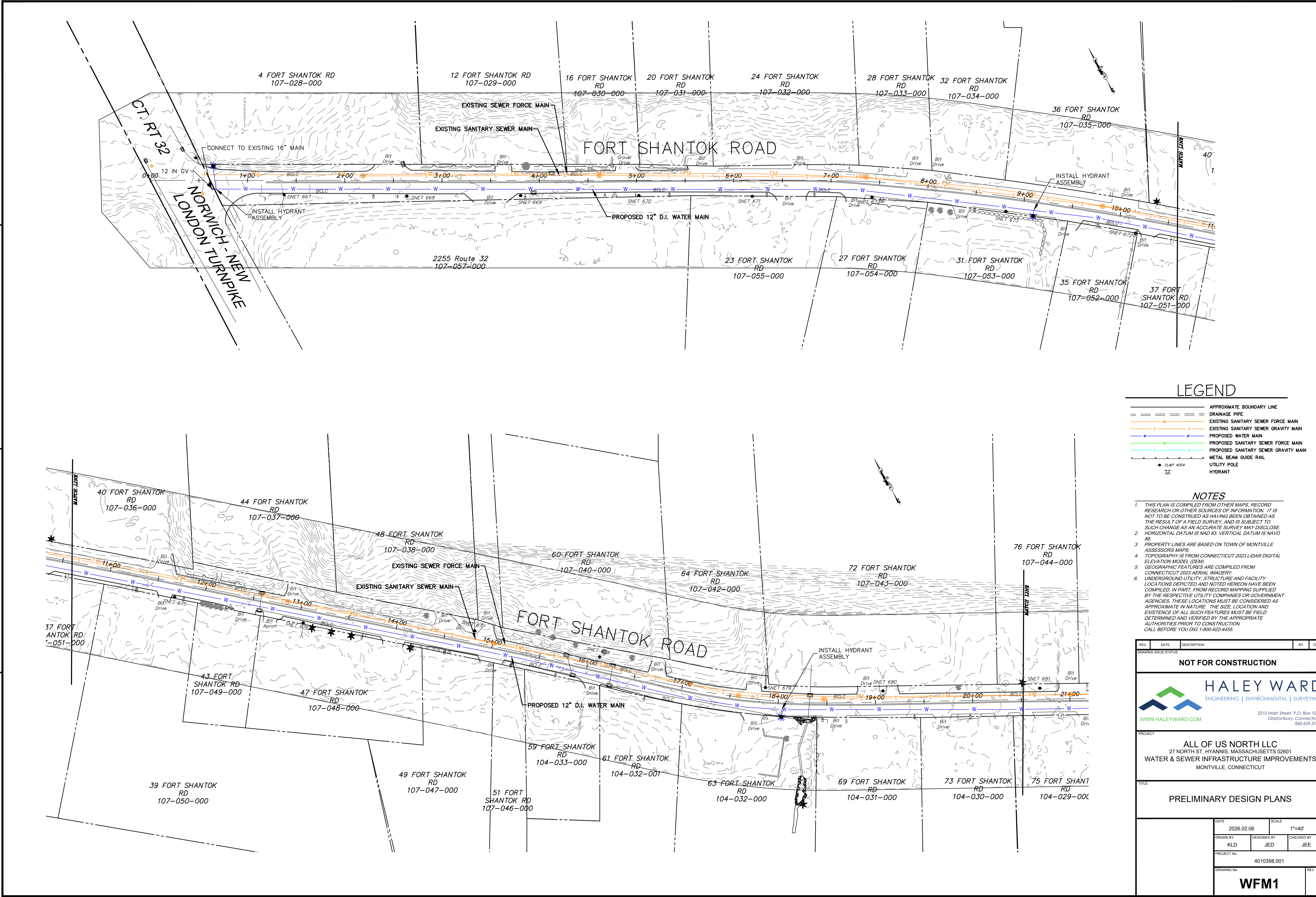


**HALEY WARD**  
ENGINEERING | ENVIRONMENTAL | SURVEYING

2210 Main Street, P.O. Box 1088  
Glastonbury, Connecticut  
860.659.3100

DATE: MARCH 24, 2026

FILE LOCATION: P:\CT\4010388 - ALL OF US AT NORTH, LLC\988.001 MONTVILLE DEVELOPMENT 2025 - SMA02-CAD\_FILES\CIVIL\PRODUCTION PLANS\SEWER DWG. 2026.03.24. 1:11 PM



**LEGEND**

- APPROXIMATE BOUNDARY LINE
- DRAINAGE PIPE
- EXISTING SANITARY SEWER FORCE MAIN
- EXISTING SANITARY SEWER GRAVITY MAIN
- PROPOSED WATER MAIN
- PROPOSED SANITARY SEWER FORCE MAIN
- PROPOSED SANITARY SEWER GRAVITY MAIN
- METAL BEAM GUIDE RAIL
- UTILITY POLE
- CLAP 4054
- HYDRANT

**NOTES**

1. THIS PLAN IS COMPILED FROM OTHER MAPS, RECORD RESEARCH OR OTHER SOURCES OF INFORMATION. IT IS NOT TO BE CONSTRUED AS HAVING BEEN OBTAINED AS THE RESULT OF A FIELD SURVEY, AND IS SUBJECT TO SUCH CHANGE AS AN ACCURATE SURVEY MAY DISCLOSE.
2. HORIZONTAL DATUM IS NAD 83. VERTICAL DATUM IS NAVD 88.
3. PROPERTY LINES ARE BASED ON TOWN OF MONTVILLE ASSESSORS MAPS.
4. TOPOGRAPHY IS FROM CONNECTICUT 2023 LIDAR DIGITAL ELEVATION MODEL (DEM).
5. GEOGRAPHIC FEATURES ARE COMPILED FROM CONNECTICUT 2023 AERIAL IMAGERY.
6. UNDERGROUND UTILITY, STRUCTURE AND FACILITY LOCATIONS DEPICTED AND NOTED HEREON HAVE BEEN COMPILED, IN PART, FROM RECORD MAPPING SUPPLIED BY THE RESPECTIVE UTILITY COMPANIES OR GOVERNMENT AGENCIES. THESE LOCATIONS MUST BE CONSIDERED AS APPROXIMATE IN NATURE. THE SIZE, LOCATION AND EXISTENCE OF ALL SUCH FEATURES MUST BE FIELD DETERMINED AND VERIFIED BY THE APPROPRIATE AUTHORITIES PRIOR TO CONSTRUCTION. CALL BEFORE YOU DIG 1-800-922-4455.

REV	DATE	DESCRIPTION	BY	CHK
DRAWING ISSUE STATUS				

**NOT FOR CONSTRUCTION**

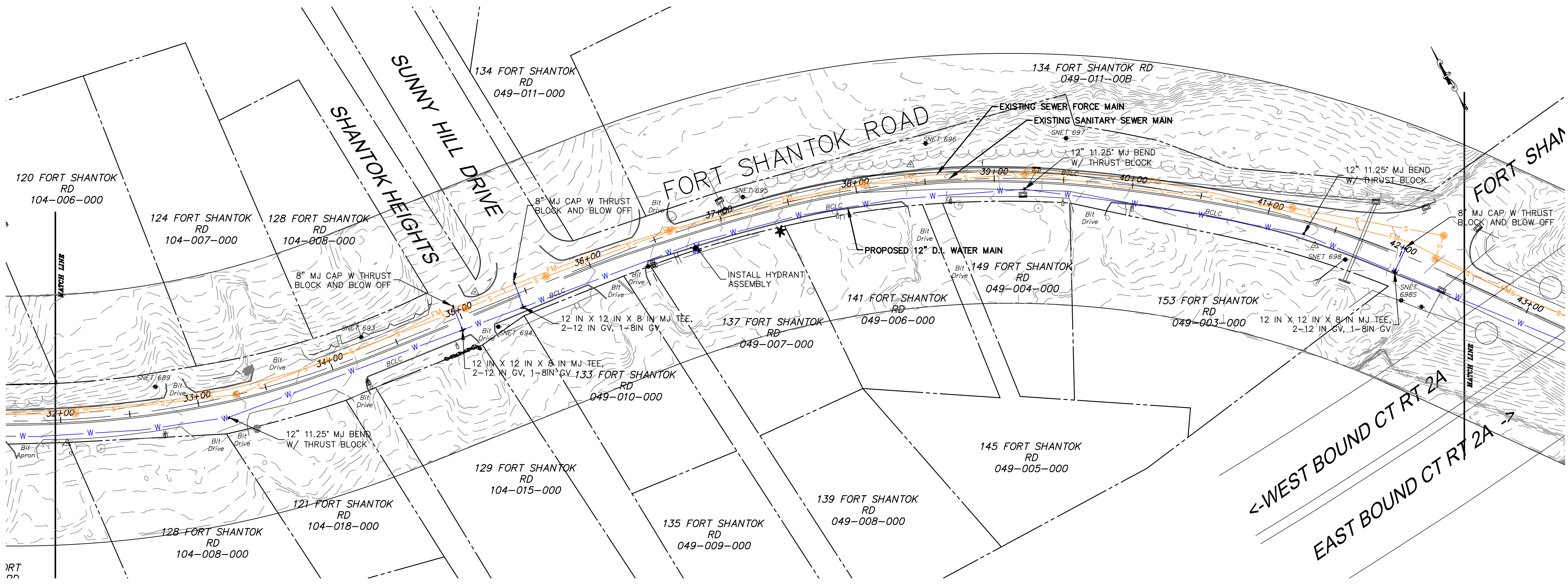
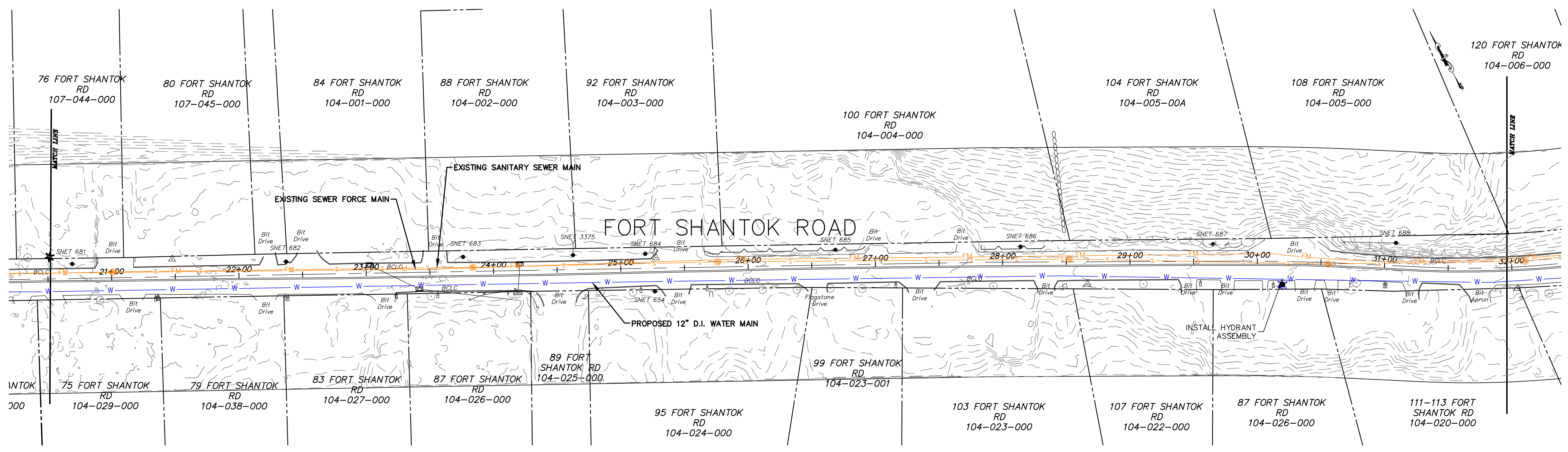
**HALEY WARD**  
 ENGINEERING | ENVIRONMENTAL | SURVEYING  
 2210 Main Street, P.O. Box 1088  
 Glastonbury, Connecticut 06033  
 860.659.3100  
[WWW.HALEYWARD.COM](http://WWW.HALEYWARD.COM)

PROJECT: **ALL OF US NORTH LLC**  
 27 NORTH ST, HYANNIS, MASSACHUSETTS 02601  
**WATER & SEWER INFRASTRUCTURE IMPROVEMENTS**  
 MONTVILLE, CONNECTICUT

TITLE: **PRELIMINARY DESIGN PLANS**

DATE	2026.02.06	SCALE	1"=40'
DRAWN BY	KLD	DESIGNED BY	JED
PROJECT No.	4010398.001		
DRAWING No.	<b>WFM1</b>		

FILE LOCATION: P:\CT\4010398 - ALL OF US AT NORTH, LLC\988.001 MONTVILLE DEVELOPMENT 2025 - SNA02-CAD\_FILES\CIVIL\PRODUCTION PLANS\SEWER DWG. 2026.03.24. 1:11 PM



**LEGEND**

- APPROXIMATE BOUNDARY LINE
- DRAINAGE PIPE
- EXISTING SANITARY SEWER FORCE MAIN
- EXISTING SEWER FORCE MAIN
- PROPOSED WATER MAIN
- PROPOSED SANITARY SEWER FORCE MAIN
- PROPOSED SANITARY SEWER GRAVITY MAIN
- METAL BEAM GUIDE RAIL
- UTILITY POLE
- HYDRANT

**NOTES**

1. THIS PLAN IS COMPILED FROM OTHER MAPS, RECORD RESEARCH OR OTHER SOURCES OF INFORMATION. IT IS NOT TO BE CONSTRUED AS HAVING BEEN OBTAINED AS THE RESULT OF A FIELD SURVEY, AND IS SUBJECT TO SUCH CHANGE AS AN ACCURATE SURVEY MAY DISCLOSE.
2. HORIZONTAL DATUM IS NAD 83. VERTICAL DATUM IS NAVD 88.
3. PROPERTY LINES ARE BASED ON TOWN OF MONTVILLE ASSESSORS MAPS.
4. TOPOGRAPHY IS FROM CONNECTICUT 2023 LIDAR DIGITAL ELEVATION MODEL (DEM).
5. GEOGRAPHIC FEATURES ARE COMPILED FROM CONNECTICUT 2023 AERIAL IMAGERY.
6. UNDERGROUND UTILITY, STRUCTURE AND FACILITY LOCATIONS DEPICTED AND NOTED HEREON HAVE BEEN COMPILED, IN PART, FROM RECORD MAPPING SUPPLIED BY THE RESPECTIVE UTILITY COMPANIES OR GOVERNMENT AGENCIES. THESE LOCATIONS MUST BE CONSIDERED AS APPROXIMATE IN NATURE. THE SIZE, LOCATION AND EXISTENCE OF ALL SUCH FEATURES MUST BE FIELD DETERMINED AND VERIFIED BY THE APPROPRIATE AUTHORITIES PRIOR TO CONSTRUCTION. CALL BEFORE YOU DIG 1-800-922-4455.

REV	DATE	DESCRIPTION	BY	CHK
DRAWING ISSUE STATUS				

**NOT FOR CONSTRUCTION**

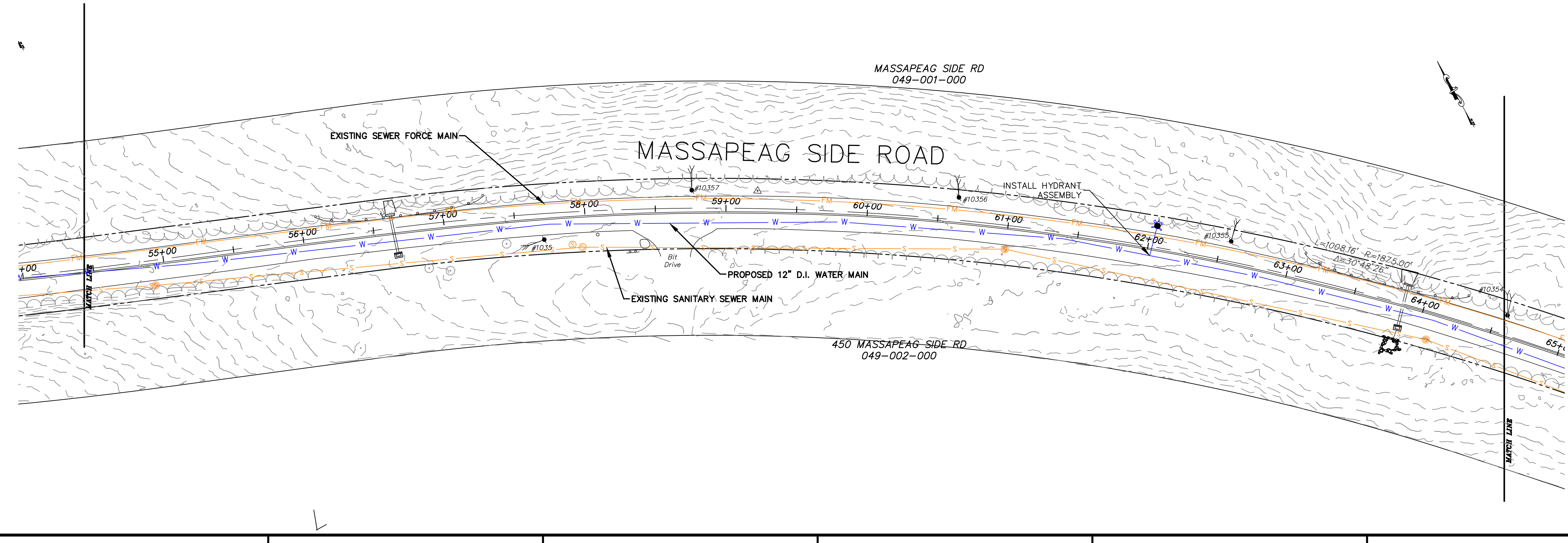
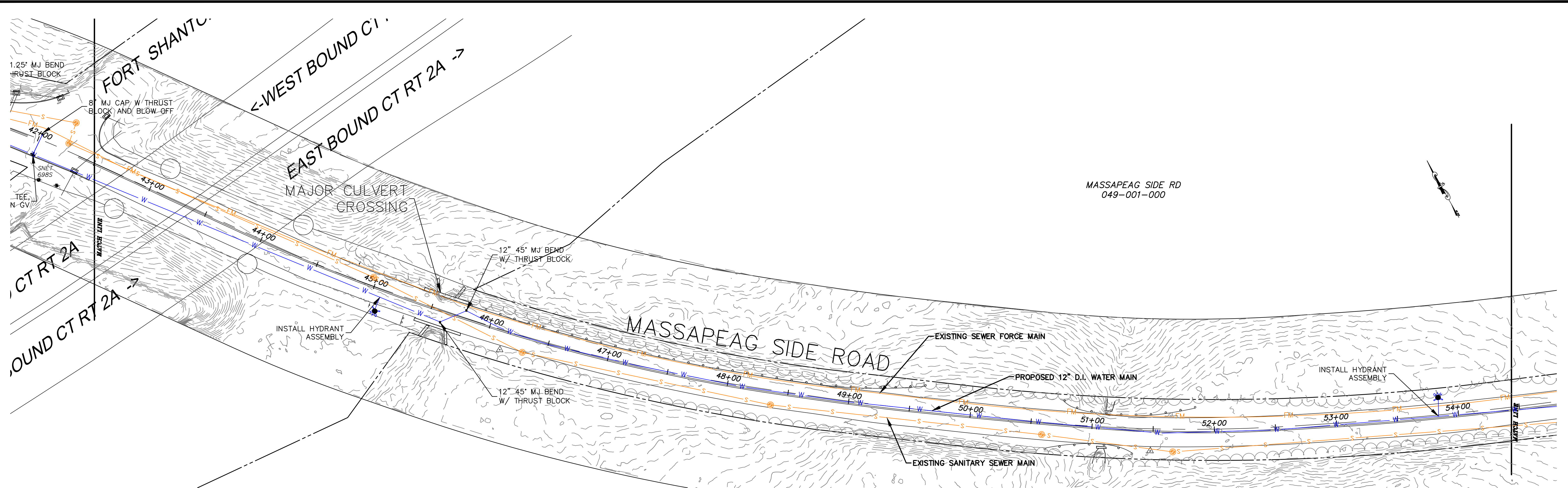


PROJECT  
**ALL OF US NORTH LLC**  
 27 NORTH ST. HYANNIS, MASSACHUSETTS 02601  
**WATER & SEWER INFRASTRUCTURE IMPROVEMENTS**  
 MONTVILLE, CONNECTICUT

**PRELIMINARY DESIGN PLANS**

DATE	SCALE
2026.02.06	1"=40'
DRAWN BY KLD	DESIGNED BY JED
CHECKED BY JEE	
PROJECT No. 4010398.001	
DRAWING No. <b>WFM2</b>	REV.

FILE LOCATION: P:\CT\40103989 - ALL OF US AT NORTH, LLC\989.001 MONTVILLE DEVELOPMENT 2025 - SMA02-CAD\_FILES\CIVIL\PRODUCTION PLANS\SEWER DWG. 2026.03.24. 1:11 PM



**LEGEND**

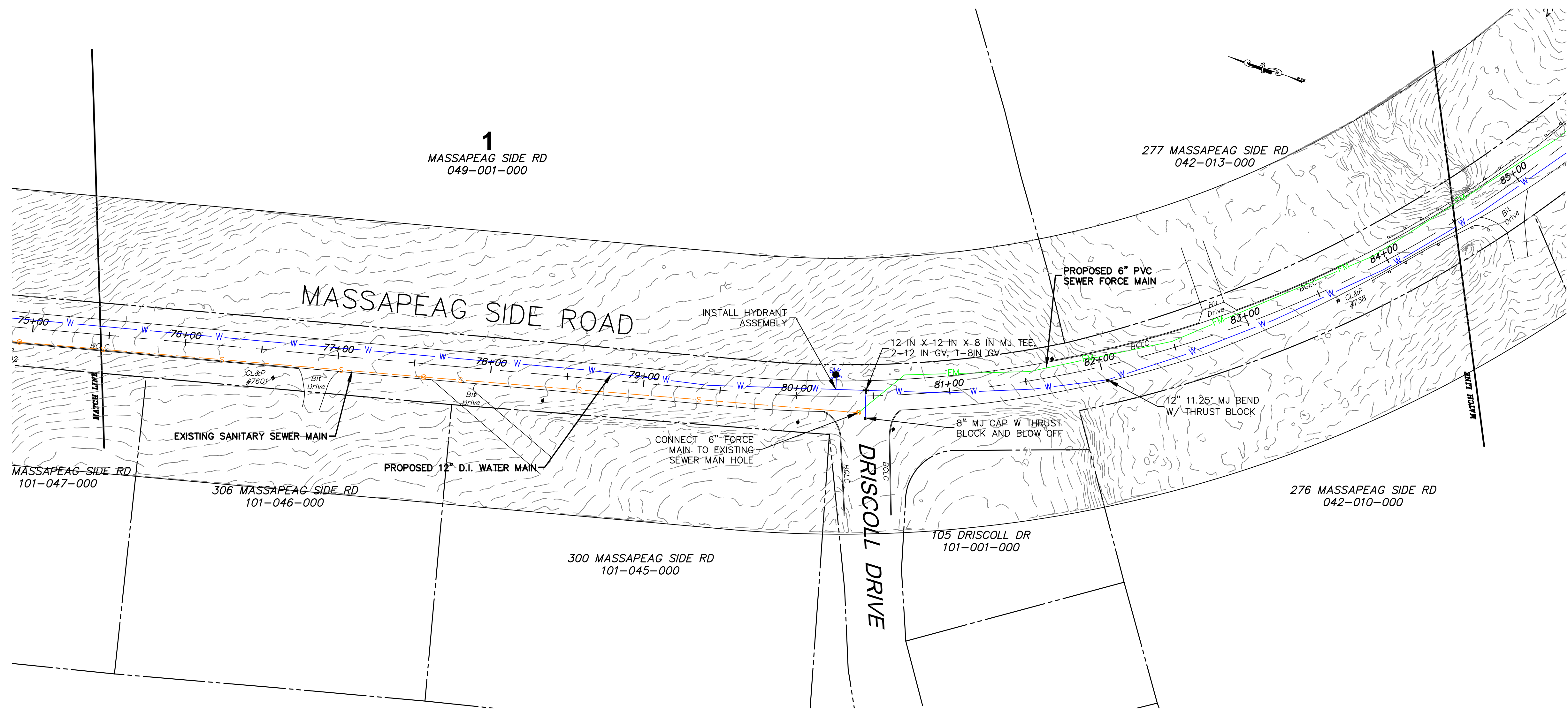
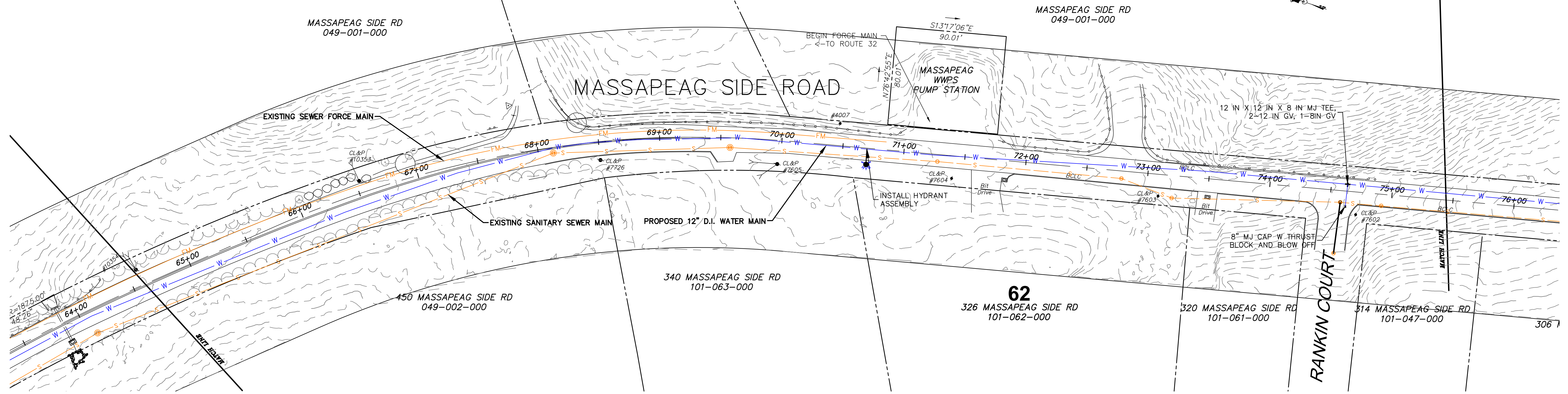
- APPROXIMATE BOUNDARY LINE
- DRAINAGE PIPE
- EXISTING SANITARY SEWER FORCE MAIN
- EXISTING SANITARY SEWER GRAVITY MAIN
- PROPOSED WATER MAIN
- PROPOSED SANITARY SEWER FORCE MAIN
- PROPOSED SANITARY SEWER GRAVITY MAIN
- METAL BEAM GUIDE RAIL
- UTILITY POLE
- HYDRANT

**NOTES**

1. THIS PLAN IS COMPILED FROM OTHER MAPS, RECORD RESEARCH OR OTHER SOURCES OF INFORMATION. IT IS NOT TO BE CONSTRUED AS HAVING BEEN OBTAINED AS THE RESULT OF A FIELD SURVEY, AND IS SUBJECT TO SUCH CHANGE AS AN ACCURATE SURVEY MAY DISCLOSE.
2. HORIZONTAL DATUM IS NAD 83. VERTICAL DATUM IS NAVD 88.
3. PROPERTY LINES ARE BASED ON TOWN OF MONTVILLE ASSESSORS MAPS.
4. TOPOGRAPHY IS FROM CONNECTICUT 2023 LIDAR DIGITAL ELEVATION MODEL (DEM).
5. GEOGRAPHIC FEATURES ARE COMPILED FROM CONNECTICUT 2023 AERIAL IMAGERY.
6. UNDERGROUND UTILITY, STRUCTURE AND FACILITY LOCATIONS DEPICTED AND NOTED HEREON HAVE BEEN COMPILED, IN PART, FROM RECORD MAPPING SUPPLIED BY THE RESPECTIVE UTILITY COMPANIES OR GOVERNMENT AGENCIES. THESE LOCATIONS MUST BE CONSIDERED AS APPROXIMATE IN NATURE. THE SIZE, LOCATION AND EXISTENCE OF ALL SUCH FEATURES MUST BE FIELD DETERMINED AND VERIFIED BY THE APPROPRIATE AUTHORITIES PRIOR TO CONSTRUCTION. CALL BEFORE YOU DIG 1-800-922-4455.

REV	DATE	DESCRIPTION	BY	CHK
DRAWING ISSUE STATUS				
<b>NOT FOR CONSTRUCTION</b>				
		<b>HALEY WARD</b> ENGINEERING   ENVIRONMENTAL   SURVEYING		
WWW.HALEYWARD.COM		2210 Main Street, P.O. Box 1088 Glastonbury, Connecticut 860.659.3100		
PROJECT				
ALL OF US NORTH LLC 27 NORTH ST. HYANNIS, MASSACHUSETTS 02601 WATER & SEWER INFRASTRUCTURE IMPROVEMENTS MONTVILLE, CONNECTICUT				
TITLE				
<b>PRELIMINARY DESIGN PLANS</b>				
DATE		SCALE		
2026.02.06		1"=40'		
DRAWN BY	DESIGNED BY	CHECKED BY		
KLD	JED	JEE		
PROJECT No.				
4010398.001				
DRAWING No.				
<b>WFM3</b>				

FILE LOCATION: P:\CT\40103988 - ALL OF US AT NORTH, LLC\988.001 MONTVILLE DEVELOPMENT 2025 - SMA02-CAD\_FILES\CIVIL\PRODUCTION PLANS\SEWER.DWG, 2026.03.24, 1:11 PM



**LEGEND**

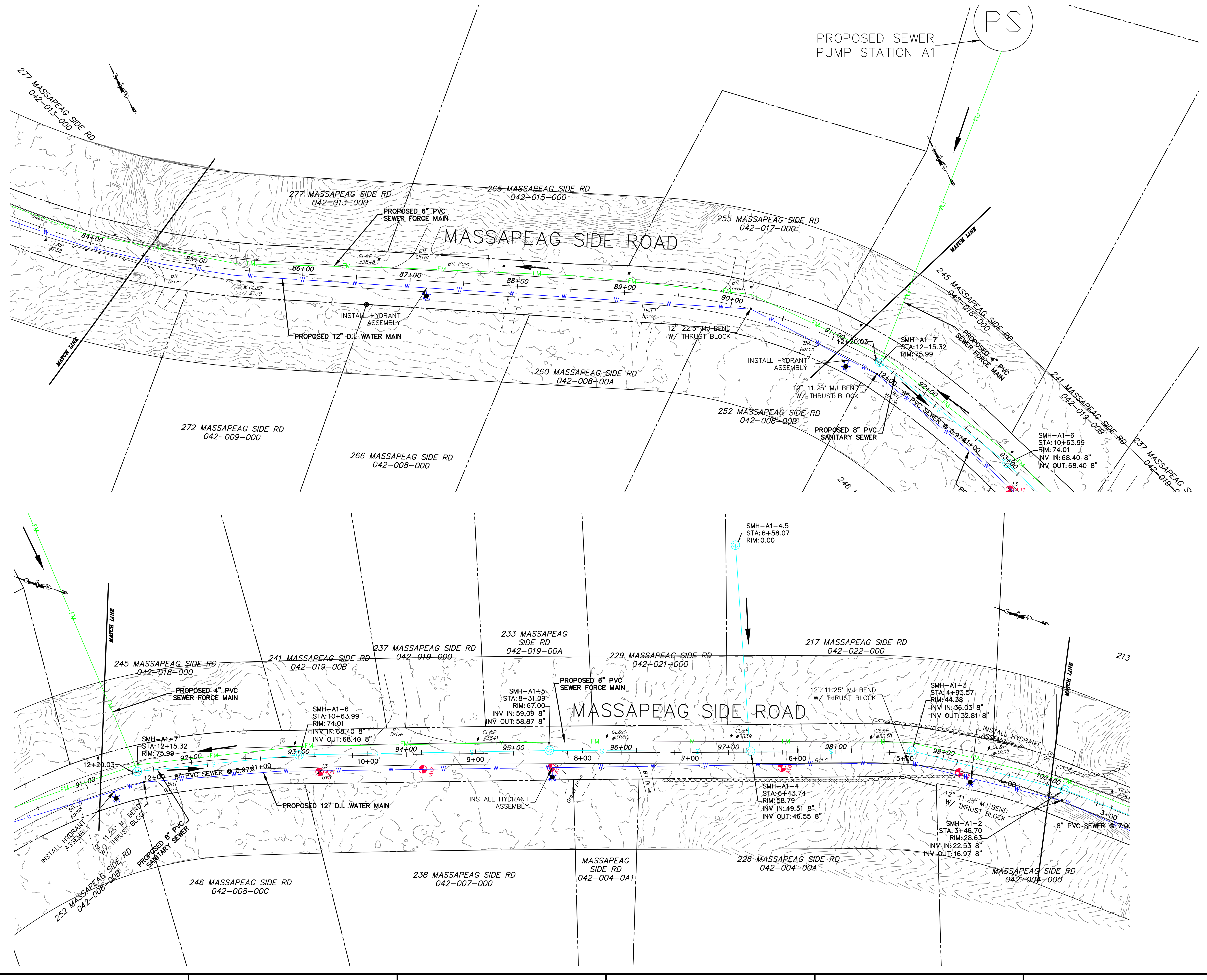
- APPROXIMATE BOUNDARY LINE
- DRAINAGE PIPE
- EXISTING SANITARY SEWER FORCE MAIN
- EXISTING SANITARY SEWER GRAVITY MAIN
- PROPOSED WATER MAIN
- PROPOSED SANITARY SEWER FORCE MAIN
- PROPOSED SANITARY SEWER GRAVITY MAIN
- METAL BEAM GUIDE RAIL
- CL&P 4054 UTILITY POLE
- ⊕ HYDRANT

**NOTES**

1. THIS PLAN IS COMPILED FROM OTHER MAPS, RECORD RESEARCH OR OTHER SOURCES OF INFORMATION. IT IS NOT TO BE CONSTRUED AS HAVING BEEN OBTAINED AS THE RESULT OF A FIELD SURVEY, AND IS SUBJECT TO SUCH CHANGE AS AN ACCURATE SURVEY MAY DISCLOSE.
2. HORIZONTAL DATUM IS NAD 83. VERTICAL DATUM IS NAVD 88.
3. PROPERTY LINES ARE BASED ON TOWN OF MONTVILLE ASSESSORS MAPS.
4. TOPOGRAPHY IS FROM CONNECTICUT 2023 LIDAR DIGITAL ELEVATION MODEL (DEM).
5. GEOGRAPHIC FEATURES ARE COMPILED FROM CONNECTICUT 2023 AERIAL IMAGERY.
6. UNDERGROUND UTILITY, STRUCTURE AND FACILITY LOCATIONS DEPICTED AND NOTED HEREON HAVE BEEN COMPILED, IN PART, FROM RECORD MAPPING SUPPLIED BY THE RESPECTIVE UTILITY COMPANIES OR GOVERNMENT AGENCIES. THESE LOCATIONS MUST BE CONSIDERED AS APPROXIMATE IN NATURE. THE SIZE, LOCATION AND EXISTENCE OF ALL SUCH FEATURES MUST BE FIELD DETERMINED AND VERIFIED BY THE APPROPRIATE AUTHORITIES PRIOR TO CONSTRUCTION. CALL BEFORE YOU DIG 1-800-922-4455.

REV	DATE	DESCRIPTION	BY	CHK
<b>NOT FOR CONSTRUCTION</b>				
 <b>HALEY WARD</b> ENGINEERING   ENVIRONMENTAL   SURVEYING <small>2210 Main Street, P.O. Box 1088            Glastonbury, Connecticut            860.659.3100</small>				
PROJECT: <b>ALL OF US NORTH LLC</b> 27 NORTH ST, HYANNIS, MASSACHUSETTS 02601 <b>WATER &amp; SEWER INFRASTRUCTURE IMPROVEMENTS</b> MONTVILLE, CONNECTICUT				
<b>PRELIMINARY DESIGN PLANS</b>				
DATE: 2026.02.06		SCALE: 1"=40'		
DRAWN BY: KLD	DESIGNED BY: JED	CHECKED BY: JEE		
PROJECT No: 4010398.001				
<b>WFM4</b>				

FILE LOCATION: P:\CT\4010398 - ALL OF US AT NORTH, LLC\988.001 MONTVILLE DEVELOPMENT 2025 - SNA02-CAD\_FILES\CIVIL\PRODUCTION PLANS\SEWER.DWG, 2026.03.24, 1:11 PM



(PS)

PROPOSED SEWER PUMP STATION A1

**LEGEND**

- APPROXIMATE BOUNDARY LINE
- DRAINAGE PIPE
- EXISTING SANITARY SEWER FORCE MAIN
- EXISTING SANITARY SEWER GRAVITY MAIN
- PROPOSED WATER MAIN
- PROPOSED SANITARY SEWER FORCE MAIN
- PROPOSED SANITARY SEWER GRAVITY MAIN
- METAL BEAM GUIDE RAIL
- UTILITY POLE
- HYDRANT

**NOTES**

1. THIS PLAN IS COMPILED FROM OTHER MAPS, RECORD RESEARCH OR OTHER SOURCES OF INFORMATION. IT IS NOT TO BE CONSTRUED AS HAVING BEEN OBTAINED AS THE RESULT OF A FIELD SURVEY, AND IS SUBJECT TO SUCH CHANGE AS AN ACCURATE SURVEY MAY DISCLOSE.
2. HORIZONTAL DATUM IS NAD 83. VERTICAL DATUM IS NAVD 88.
3. PROPERTY LINES ARE BASED ON TOWN OF MONTVILLE ASSESSORS MAPS.
4. TOPOGRAPHY IS FROM CONNECTICUT 2023 LIDAR DIGITAL ELEVATION MODEL (DEM).
5. GEOGRAPHIC FEATURES ARE COMPILED FROM CONNECTICUT 2023 AERIAL IMAGERY.
6. UNDERGROUND UTILITY, STRUCTURE AND FACILITY LOCATIONS DEPICTED AND NOTED HEREON HAVE BEEN COMPILED, IN PART, FROM RECORD MAPPING SUPPLIED BY THE RESPECTIVE UTILITY COMPANIES OR GOVERNMENT AGENCIES. THESE LOCATIONS MUST BE CONSIDERED AS APPROXIMATE IN NATURE. THE SIZE, LOCATION AND EXISTENCE OF ALL SUCH FEATURES MUST BE FIELD DETERMINED AND VERIFIED BY THE APPROPRIATE AUTHORITIES PRIOR TO CONSTRUCTION. CALL BEFORE YOU DIG 1-800-922-4455.

REV	DATE	DESCRIPTION	BY	CHK
DRAWING ISSUE STATUS				

**NOT FOR CONSTRUCTION**

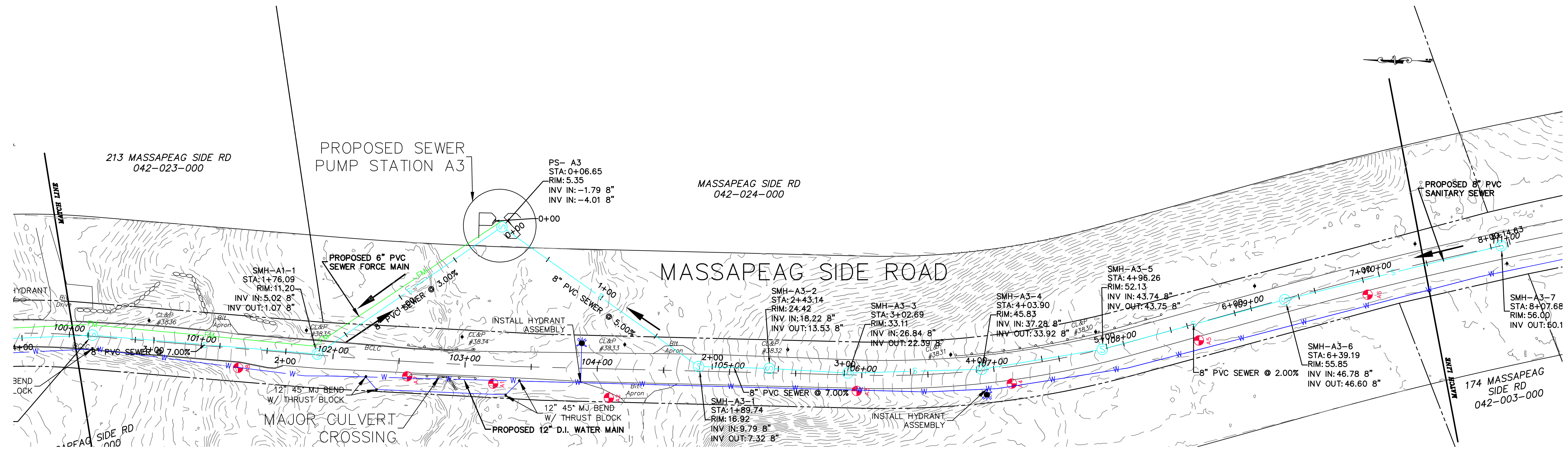
**HALEY WARD**  
ENGINEERING | ENVIRONMENTAL | SURVEYING  
WWW.HALEYWARD.COM  
2210 Main Street, P.O. Box 1088  
Glastonbury, Connecticut 06033  
860.659.3100

PROJECT  
**ALL OF US NORTH LLC**  
27 NORTH ST. HYANNIS, MASSACHUSETTS 02601  
**WATER & SEWER INFRASTRUCTURE IMPROVEMENTS**  
MONTVILLE, CONNECTICUT

**PRELIMINARY DESIGN PLANS**

DATE	2026.02.06	SCALE	1"=40'
DRAWN BY	KLD	DESIGNED BY	JED
CHECKED BY	JEE	PROJECT No.	4010398.001
DRAWING No.	<b>WFM5</b>		

FILE LOCATION: P:\CT\4010398 - ALL OF US AT NORTH, LLC\988.001 MONTVILLE DEVELOPMENT 2025 - SMA\02-CAD\_FILES\CIVIL\PRODUCTION PLANS\SEWER.DWG, 2026.03.24, 1:11 PM

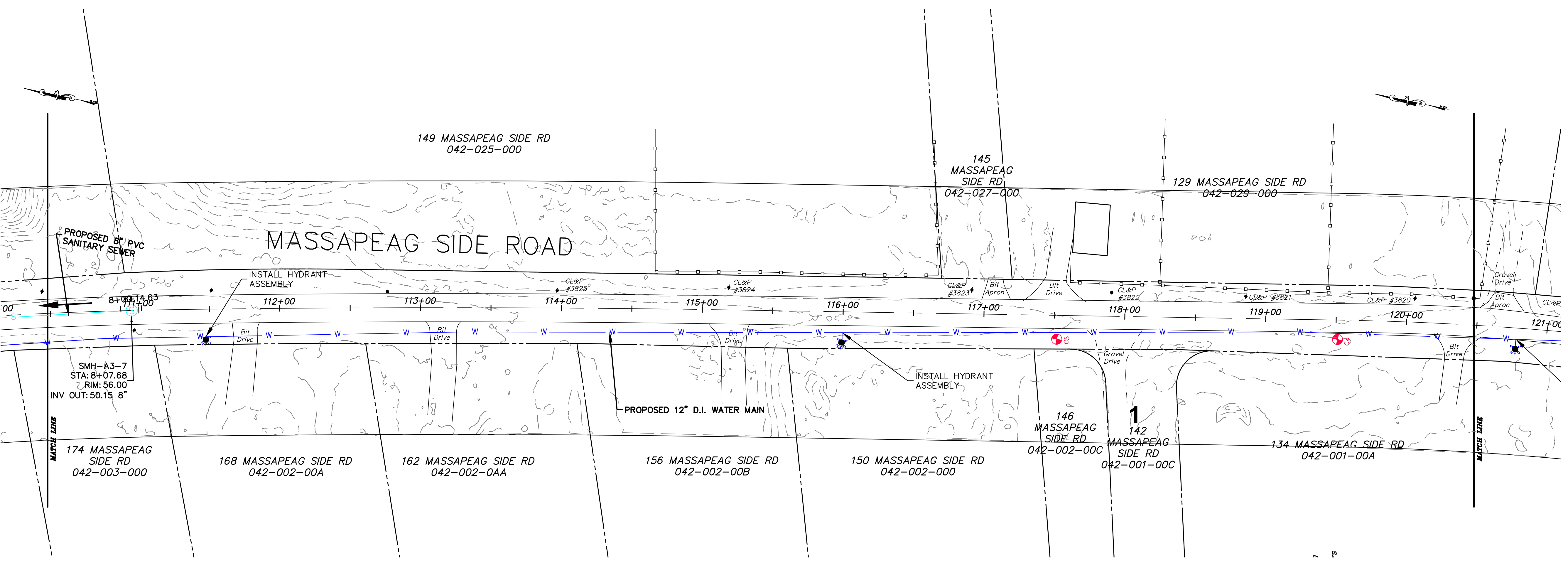


**LEGEND**

- APPROXIMATE BOUNDARY LINE
- DRAINAGE PIPE
- EXISTING SANITARY SEWER FORCE MAIN
- EXISTING SANITARY SEWER GRAVITY MAIN
- PROPOSED WATER MAIN
- PROPOSED SANITARY SEWER FORCE MAIN
- PROPOSED SANITARY SEWER GRAVITY MAIN
- METAL BEAM GUIDE RAIL
- UTILITY POLE
- HYDRANT

**NOTES**

1. THIS PLAN IS COMPILED FROM OTHER MAPS, RECORD RESEARCH OR OTHER SOURCES OF INFORMATION. IT IS NOT TO BE CONSTRUED AS HAVING BEEN OBTAINED AS THE RESULT OF A FIELD SURVEY, AND IS SUBJECT TO SUCH CHANGE AS AN ACCURATE SURVEY MAY DISCLOSE. HORIZONTAL DATUM IS NAD 83. VERTICAL DATUM IS NAVD 88.
2. PROPERTY LINES ARE BASED ON TOWN OF MONTVILLE ASSESSORS MAPS.
3. TOPOGRAPHY IS FROM CONNECTICUT 2023 LIDAR DIGITAL ELEVATION MODEL (DEM).
4. GEOGRAPHIC FEATURES ARE COMPILED FROM CONNECTICUT 2023 AERIAL IMAGERY.
5. UNDERGROUND UTILITY, STRUCTURE AND FACILITY LOCATIONS DEPICTED AND NOTED HEREON HAVE BEEN COMPILED, IN PART, FROM RECORD MAPS SUPPLIED BY THE RESPECTIVE UTILITY COMPANIES OR GOVERNMENT AGENCIES. THESE LOCATIONS MUST BE CONSIDERED AS APPROXIMATE IN NATURE. THE SIZE, LOCATION AND EXISTENCE OF ALL SUCH FEATURES MUST BE FIELD DETERMINED AND VERIFIED BY THE APPROPRIATE AUTHORITIES PRIOR TO CONSTRUCTION. CALL BEFORE YOU DIG 1-800-922-4455.



REV	DATE	DESCRIPTION	BY	CHK
DRAWING ISSUE STATUS				
<b>NOT FOR CONSTRUCTION</b>				
		<b>HALEY WARD</b> ENGINEERING   ENVIRONMENTAL   SURVEYING WWW.HALEYWARD.COM 2210 Main Street, P.O. Box 1088 Glastonbury, Connecticut 06033 860.659.3100		
PROJECT				
<b>ALL OF US NORTH LLC</b> 27 NORTH ST, HYANNIS, MASSACHUSETTS 02601 <b>WATER &amp; SEWER INFRASTRUCTURE IMPROVEMENTS</b> MONTVILLE, CONNECTICUT				
TITLE				
<b>PRELIMINARY DESIGN PLANS</b>				
DATE		SCALE		
2026.02.06		1"=40'		
DRAWN BY	DESIGNED BY	CHECKED BY		
KLD	JED	JEE		
PROJECT No.				
4010398.001				
DRAWING No.				
<b>WFM6</b>				