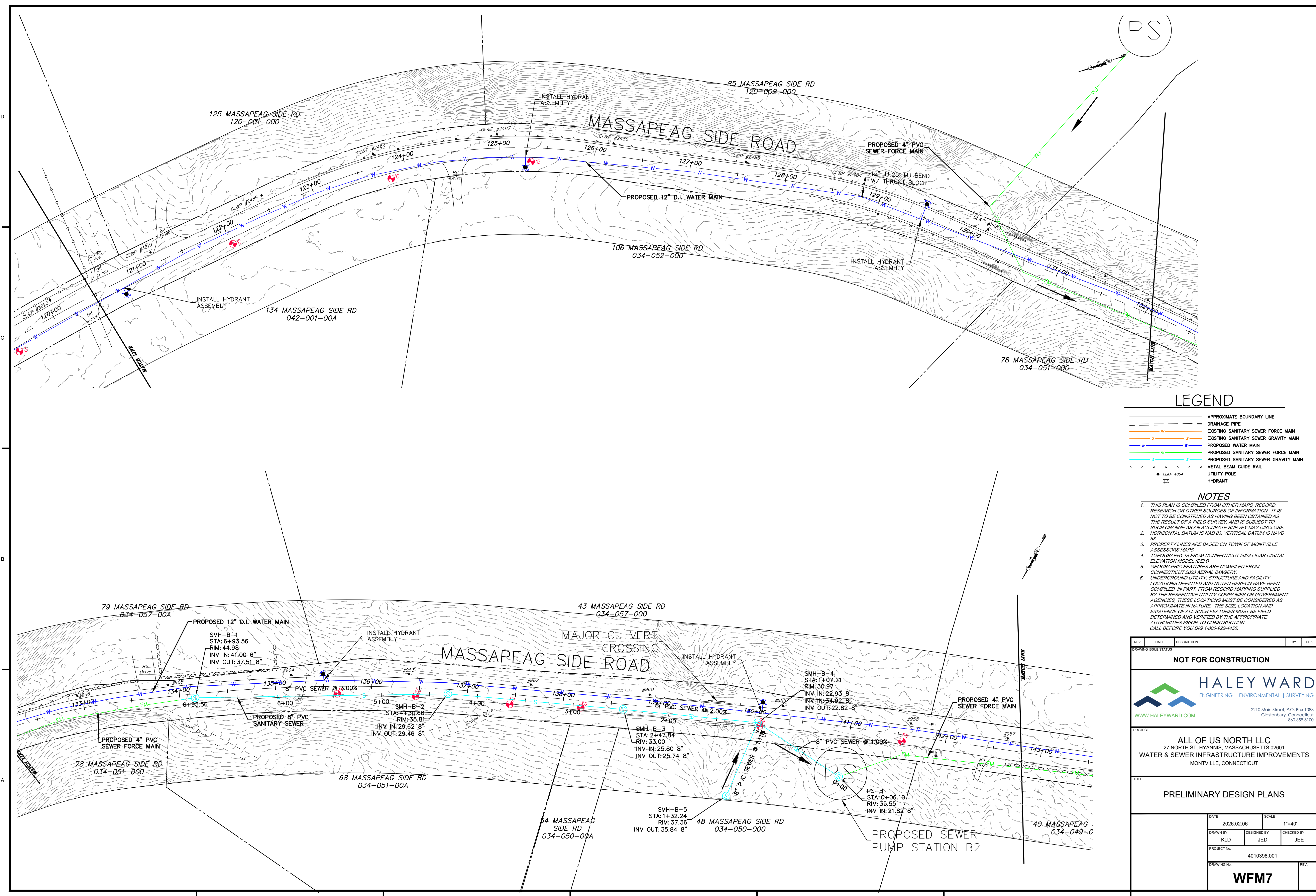


FILE LOCATION: P:\CT\40103989 - ALL OF US AT NORTH, LLC\989.001 MONTVILLE DEVELOPMENT 2025 - SMA02-CAD_FILES\CIVIL\PRODUCTION PLANS\SEWER DWG. 2026.03.24. 1:12 PM



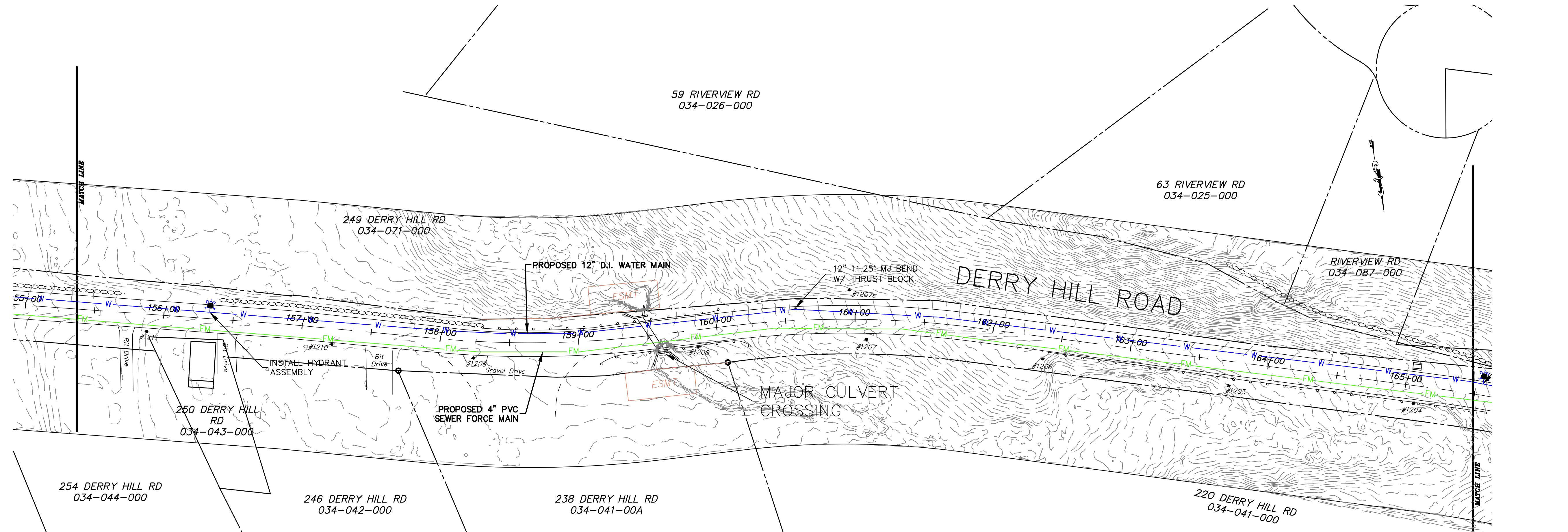
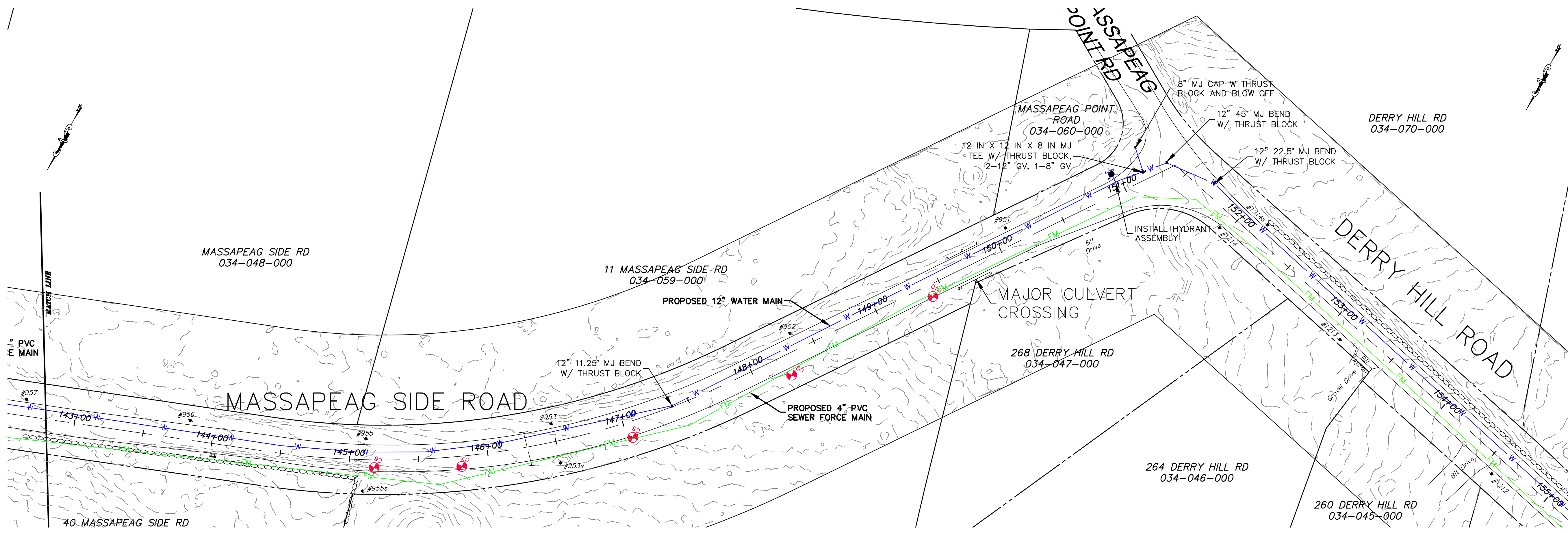
LEGEND

	APPROXIMATE BOUNDARY LINE
	DRAINAGE PIPE
	EXISTING SANITARY SEWER FORCE MAIN
	EXISTING SANITARY SEWER GRAVITY MAIN
	PROPOSED WATER MAIN
	PROPOSED SANITARY SEWER FORCE MAIN
	PROPOSED SANITARY SEWER GRAVITY MAIN
	METAL BEAM GUIDE RAIL
	UTILITY POLE
	HYDRANT

- ### NOTES
- THIS PLAN IS COMPILED FROM OTHER MAPS, RECORD RESEARCH OR OTHER SOURCES OF INFORMATION. IT IS NOT TO BE CONSTRUED AS HAVING BEEN OBTAINED AS THE RESULT OF A FIELD SURVEY, AND IS SUBJECT TO SUCH CHANGE AS AN ACCURATE SURVEY MAY DISCLOSE.
 - HORIZONTAL DATUM IS NAD 83. VERTICAL DATUM IS NAVD 88.
 - PROPERTY LINES ARE BASED ON TOWN OF MONTVILLE ASSESSORS MAPS.
 - TOPOGRAPHY IS FROM CONNECTICUT 2023 LIDAR DIGITAL ELEVATION MODEL (DEM).
 - GEOGRAPHIC FEATURES ARE COMPILED FROM CONNECTICUT 2023 AERIAL IMAGERY.
 - UNDERGROUND UTILITY, STRUCTURE AND FACILITY LOCATIONS DEPICTED AND NOTED HEREON HAVE BEEN COMPILED, IN PART, FROM RECORD MAPPING SUPPLIED BY THE RESPECTIVE UTILITY COMPANIES OR GOVERNMENT AGENCIES. THESE LOCATIONS MUST BE CONSIDERED AS APPROXIMATE IN NATURE. THE SIZE, LOCATION AND EXISTENCE OF ALL SUCH FEATURES MUST BE FIELD DETERMINED AND VERIFIED BY THE APPROPRIATE AUTHORITIES PRIOR TO CONSTRUCTION. CALL BEFORE YOU DIG 1-800-822-4455.

REV	DATE	DESCRIPTION	BY	CHK
DRAWING ISSUE STATUS				
NOT FOR CONSTRUCTION				
		HALEY WARD ENGINEERING ENVIRONMENTAL SURVEYING		
www.haleyward.com		2210 Main Street, P.O. Box 1088 Glastonbury, Connecticut 06033 860.659.3100		
PROJECT				
ALL OF US NORTH LLC 27 NORTH ST. HYANNIS, MASSACHUSETTS 02601 WATER & SEWER INFRASTRUCTURE IMPROVEMENTS MONTVILLE, CONNECTICUT				
TITLE				
PRELIMINARY DESIGN PLANS				
DATE		SCALE		
2026.02.06		1"=40'		
DRAWN BY	DESIGNED BY	CHECKED BY		
KLD	JED	JEE		
PROJECT No.				
4010398.001				
DRAWING No.				
WFM7				

FILE LOCATION: P:\CT\40103989 - ALL OF US AT NORTH, LLC\989.001 MONTVILLE DEVELOPMENT 2025 - SNA02-CAD_FILES\CIVIL\PRODUCTION PLANS\SEWER DWG. 2026.03.24, 1:12 PM



LEGEND

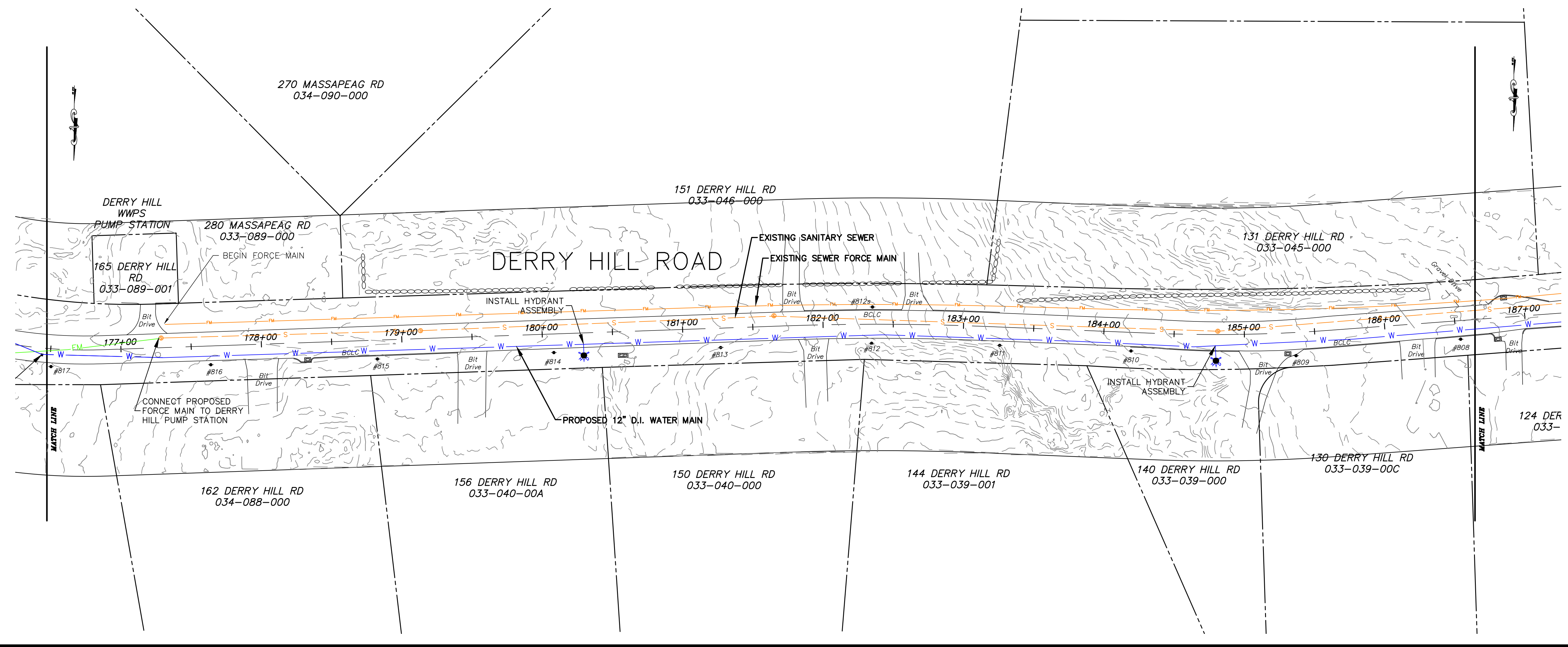
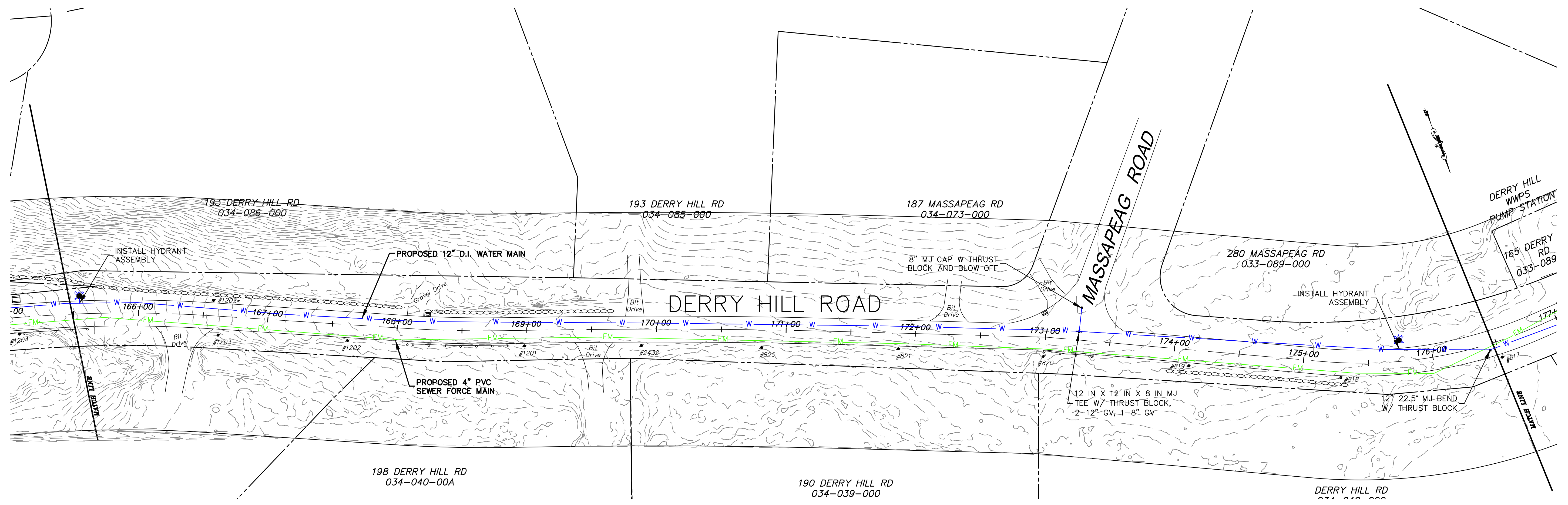
- APPROXIMATE BOUNDARY LINE
- DRAINAGE PIPE
- EXISTING SANITARY SEWER FORCE MAIN
- EXISTING SANITARY SEWER GRAVITY MAIN
- PROPOSED WATER MAIN
- PROPOSED SANITARY SEWER FORCE MAIN
- PROPOSED SANITARY SEWER GRAVITY MAIN
- METAL BEAM GUIDE RAIL
- UTILITY POLE
- HYDRANT

NOTES

1. THIS PLAN IS COMPILED FROM OTHER MAPS, RECORD RESEARCH OR OTHER SOURCES OF INFORMATION. IT IS NOT TO BE CONSTRUED AS HAVING BEEN OBTAINED AS THE RESULT OF A FIELD SURVEY, AND IS SUBJECT TO SUCH CHANGE AS AN ACCURATE SURVEY MAY DISCLOSE.
2. HORIZONTAL DATUM IS NAD 83. VERTICAL DATUM IS NAVD 88.
3. PROPERTY LINES ARE BASED ON TOWN OF MONTVILLE ASSESSORS MAPS.
4. TOPOGRAPHY IS FROM CONNECTICUT 2023 LIDAR DIGITAL ELEVATION MODEL (DEM)
5. GEOGRAPHIC FEATURES ARE COMPILED FROM CONNECTICUT 2023 AERIAL IMAGERY.
6. UNDERGROUND UTILITY, STRUCTURE AND FACILITY LOCATIONS DEPICTED AND NOTED HEREON HAVE BEEN COMPILED, IN PART, FROM RECORD MAPPING SUPPLIED BY THE RESPECTIVE UTILITY COMPANIES OR GOVERNMENT AGENCIES. THESE LOCATIONS MUST BE CONSIDERED AS APPROXIMATE IN NATURE. THE SIZE, LOCATION AND EXISTENCE OF ALL SUCH FEATURES MUST BE FIELD DETERMINED AND VERIFIED BY THE APPROPRIATE AUTHORITIES PRIOR TO CONSTRUCTION. CALL BEFORE YOU DIG 1-800-922-4455.

REV	DATE	DESCRIPTION	BY	CHK
DRAWING ISSUE STATUS				
NOT FOR CONSTRUCTION				
HALEY WARD ENGINEERING ENVIRONMENTAL SURVEYING WWW.HALEYWARD.COM 2210 Main Street, P.O. Box 1088 Glastonbury, Connecticut 06033 860.659.3100				
PROJECT				
ALL OF US NORTH LLC 27 NORTH ST. HYANNIS, MASSACHUSETTS 02601 WATER & SEWER INFRASTRUCTURE IMPROVEMENTS MONTVILLE, CONNECTICUT				
TITLE				
PRELIMINARY DESIGN PLANS				
DATE		SCALE		
2026.02.06		1"=40'		
DRAWN BY	DESIGNED BY	CHECKED BY		
KLD	JED	JEE		
PROJECT No.				
4010398.001				
DRAWING No.				
WFM8				

FILE LOCATION: P:\CT\40103989 - ALL OF US AT NORTH, LLC\989.001 MONTVILLE DEVELOPMENT 2025 - SMA02-CAD_FILES\CIVIL\PRODUCTION PLANS\SEWER DWG. 2026.03.24, 1:12 PM



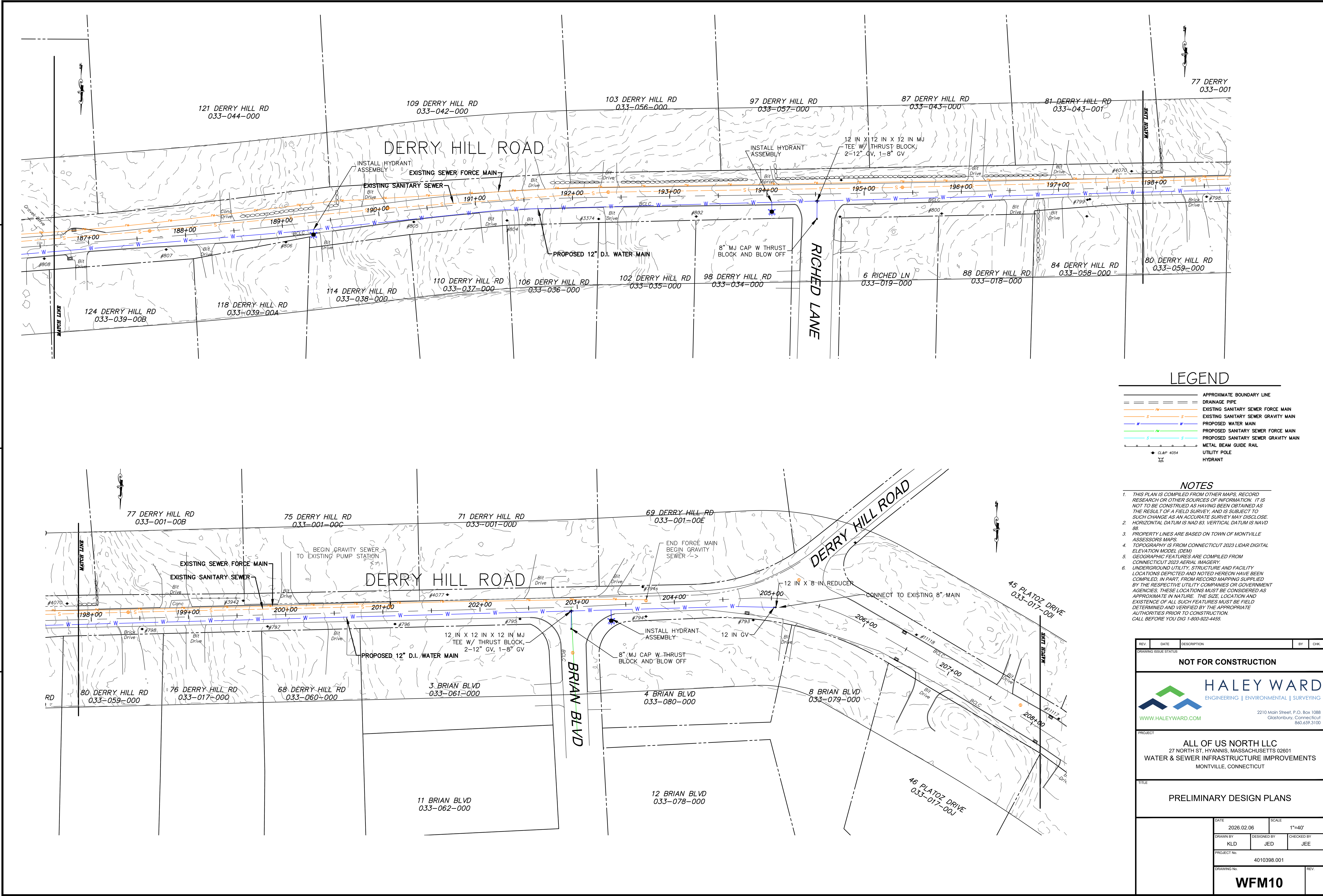
LEGEND

	APPROXIMATE BOUNDARY LINE
	DRAINAGE PIPE
	EXISTING SANITARY SEWER FORCE MAIN
	EXISTING SANITARY SEWER GRAVITY MAIN
	PROPOSED WATER MAIN
	PROPOSED SANITARY SEWER FORCE MAIN
	PROPOSED SANITARY SEWER GRAVITY MAIN
	METAL BEAM GUIDE RAIL
	UTILITY POLE
	HYDRANT

- ### NOTES
- THIS PLAN IS COMPILED FROM OTHER MAPS, RECORD RESEARCH OR OTHER SOURCES OF INFORMATION. IT IS NOT TO BE CONSTRUED AS HAVING BEEN OBTAINED AS THE RESULT OF A FIELD SURVEY, AND IS SUBJECT TO SUCH CHANGE AS AN ACCURATE SURVEY MAY DISCLOSE.
 - HORIZONTAL DATUM IS NAD 83. VERTICAL DATUM IS NAVD 88.
 - PROPERTY LINES ARE BASED ON TOWN OF MONTVILLE ASSESSORS MAPS.
 - TOPOGRAPHY IS FROM CONNECTICUT 2023 LIDAR DIGITAL ELEVATION MODEL (DEM).
 - GEOGRAPHIC FEATURES ARE COMPILED FROM CONNECTICUT 2023 AERIAL IMAGERY.
 - UNDERGROUND UTILITY, STRUCTURE AND FACILITY LOCATIONS DEPICTED AND NOTED HEREON HAVE BEEN COMPILED, IN PART, FROM RECORD MAPPING SUPPLIED BY THE RESPECTIVE UTILITY COMPANIES OR GOVERNMENT AGENCIES. THESE LOCATIONS MUST BE CONSIDERED AS APPROXIMATE IN NATURE. THE SIZE, LOCATION AND EXISTENCE OF ALL SUCH FEATURES MUST BE FIELD DETERMINED AND VERIFIED BY THE APPROPRIATE AUTHORITIES PRIOR TO CONSTRUCTION. CALL BEFORE YOU DIG 1-800-922-4455.

REV	DATE	DESCRIPTION	BY	CHK.
DRAWING ISSUE STATUS				
NOT FOR CONSTRUCTION				
		HALEY WARD ENGINEERING ENVIRONMENTAL SURVEYING		
WWW.HALEYWARD.COM		2210 Main Street, P.O. Box 1088 Glastonbury, Connecticut 860.659.3100		
PROJECT				
ALL OF US NORTH LLC 27 NORTH ST. HYANNIS, MASSACHUSETTS 02601 WATER & SEWER INFRASTRUCTURE IMPROVEMENTS MONTVILLE, CONNECTICUT				
TITLE				
PRELIMINARY DESIGN PLANS				
DATE		SCALE		
2026.02.06		1"=40'		
DRAWN BY	DESIGNED BY	CHECKED BY		
KLD	JED	JEE		
PROJECT No.				
4010398.001				
DRAWING No.				
WFM9				

FILE LOCATION: P:\CT\40103989 - ALL OF US AT NORTH, LLC\989.001 MONTVILLE DEVELOPMENT 2025 - SMA02-CAD_FILES\CIVIL\PRODUCTION PLANS\SEWER DWG. 2026.03.24. 1:12 PM



LEGEND

- APPROXIMATE BOUNDARY LINE
- DRAINAGE PIPE
- EXISTING SANITARY SEWER FORCE MAIN
- EXISTING SANITARY SEWER GRAVITY MAIN
- PROPOSED WATER MAIN
- PROPOSED SANITARY SEWER FORCE MAIN
- PROPOSED SANITARY SEWER GRAVITY MAIN
- METAL BEAM GUIDE RAIL
- UTILITY POLE
- HYDRANT

NOTES

1. THIS PLAN IS COMPILED FROM OTHER MAPS, RECORD RESEARCH OR OTHER SOURCES OF INFORMATION. IT IS NOT TO BE CONSTRUED AS HAVING BEEN OBTAINED AS THE RESULT OF A FIELD SURVEY, AND IS SUBJECT TO SUCH CHANGE AS AN ACCURATE SURVEY MAY DISCLOSE.
2. HORIZONTAL DATUM IS NAD 83. VERTICAL DATUM IS NAVD 88.
3. PROPERTY LINES ARE BASED ON TOWN OF MONTVILLE ASSESSORS MAPS.
4. TOPOGRAPHY IS FROM CONNECTICUT 2023 LIDAR DIGITAL ELEVATION MODEL (DEM).
5. GEOGRAPHIC FEATURES ARE COMPILED FROM CONNECTICUT 2023 AERIAL IMAGERY.
6. UNDERGROUND UTILITY, STRUCTURE AND FACILITY LOCATIONS DEPICTED AND NOTED HEREON HAVE BEEN COMPILED, IN PART, FROM RECORD MAPPING SUPPLIED BY THE RESPECTIVE UTILITY COMPANIES OR GOVERNMENT AGENCIES. THESE LOCATIONS MUST BE CONSIDERED AS APPROXIMATE IN NATURE. THE SIZE, LOCATION AND EXISTENCE OF ALL SUCH FEATURES MUST BE FIELD DETERMINED AND VERIFIED BY THE APPROPRIATE AUTHORITIES PRIOR TO CONSTRUCTION. CALL BEFORE YOU DIG 1-800-922-4455.

REV	DATE	DESCRIPTION	BY	CHK
DRAWING ISSUE STATUS				

NOT FOR CONSTRUCTION

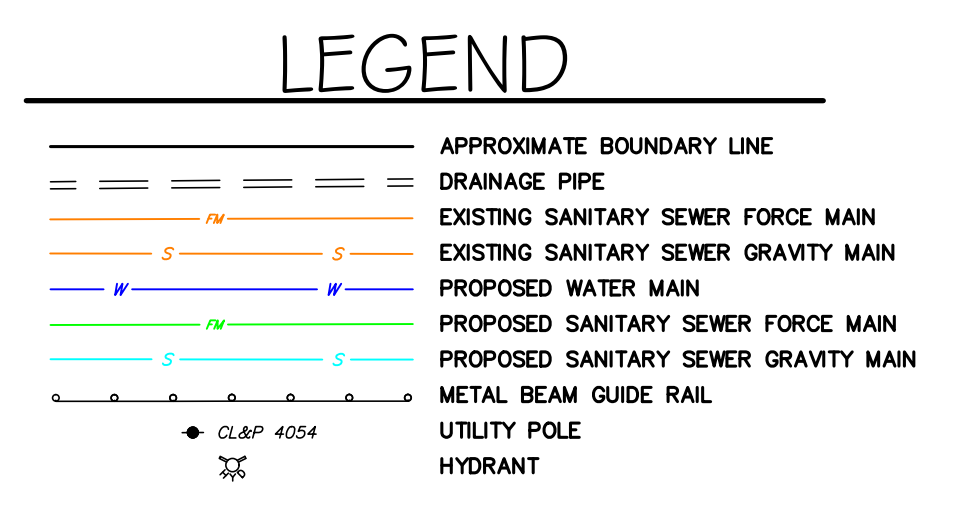
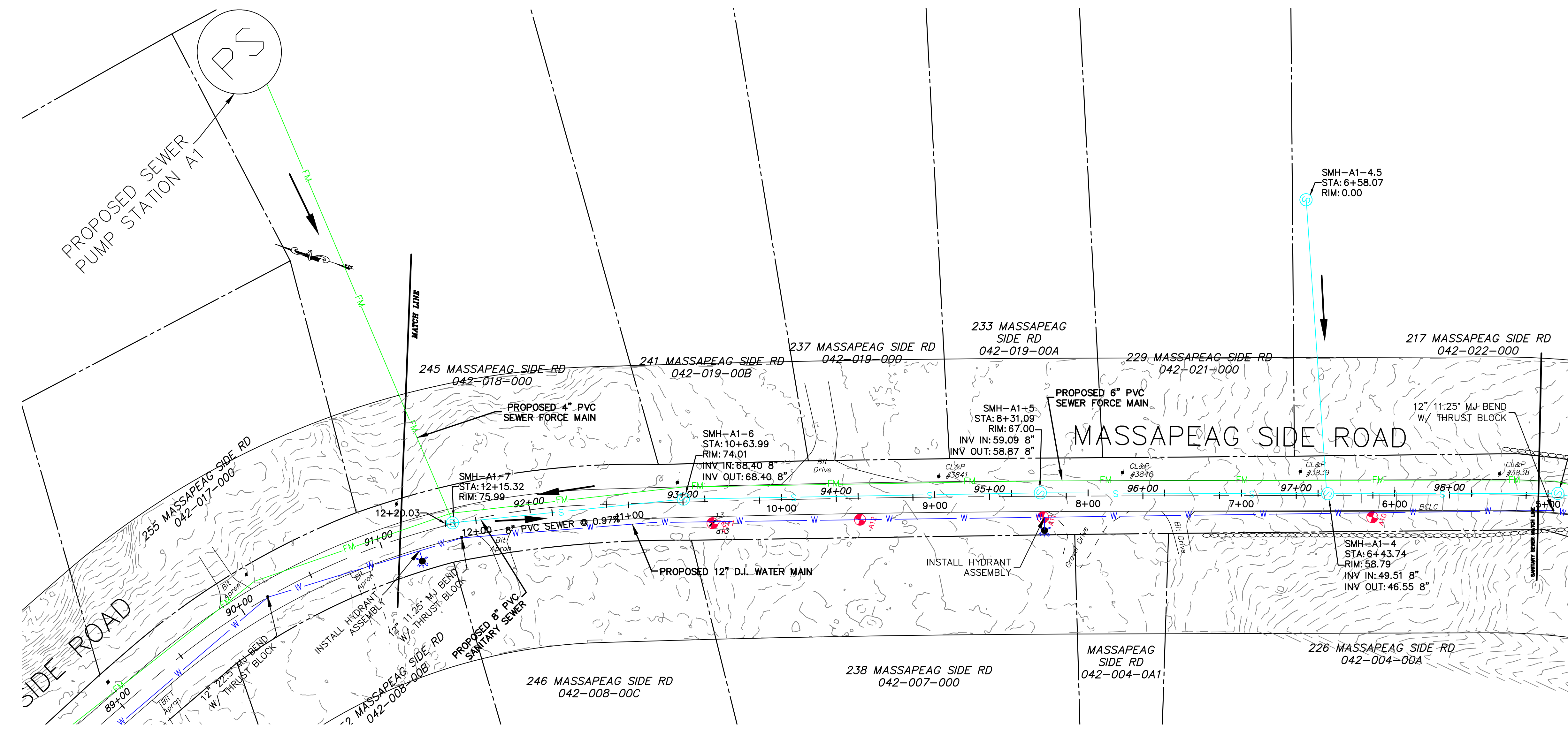
HALEY WARD
 ENGINEERING | ENVIRONMENTAL | SURVEYING
 WWW.HALEYWARD.COM
 2210 Main Street, P.O. Box 1088
 Glastonbury, Connecticut
 860.659.3100

PROJECT
ALL OF US NORTH LLC
 27 NORTH ST, HYANNIS, MASSACHUSETTS 02601
WATER & SEWER INFRASTRUCTURE IMPROVEMENTS
 MONTVILLE, CONNECTICUT

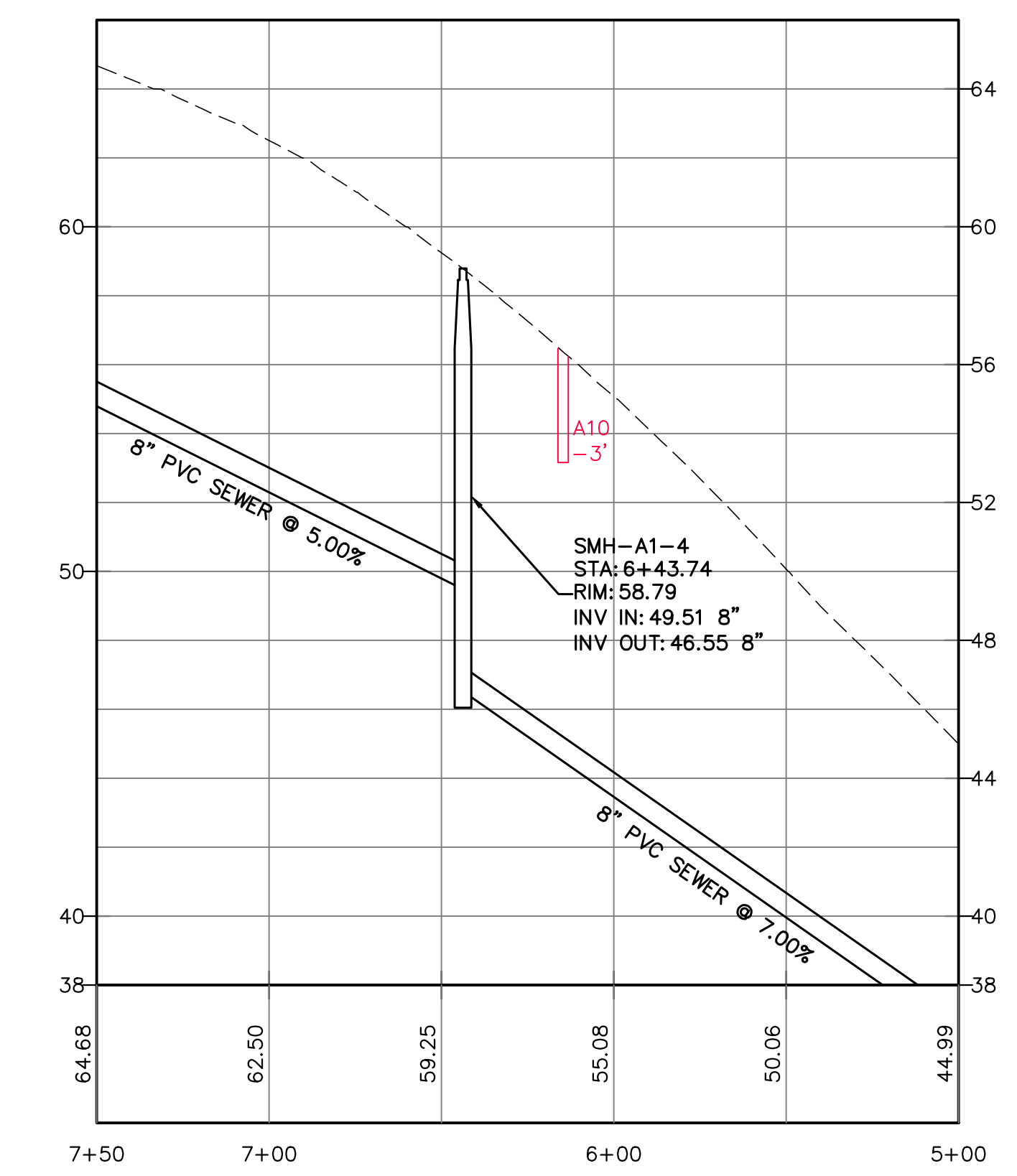
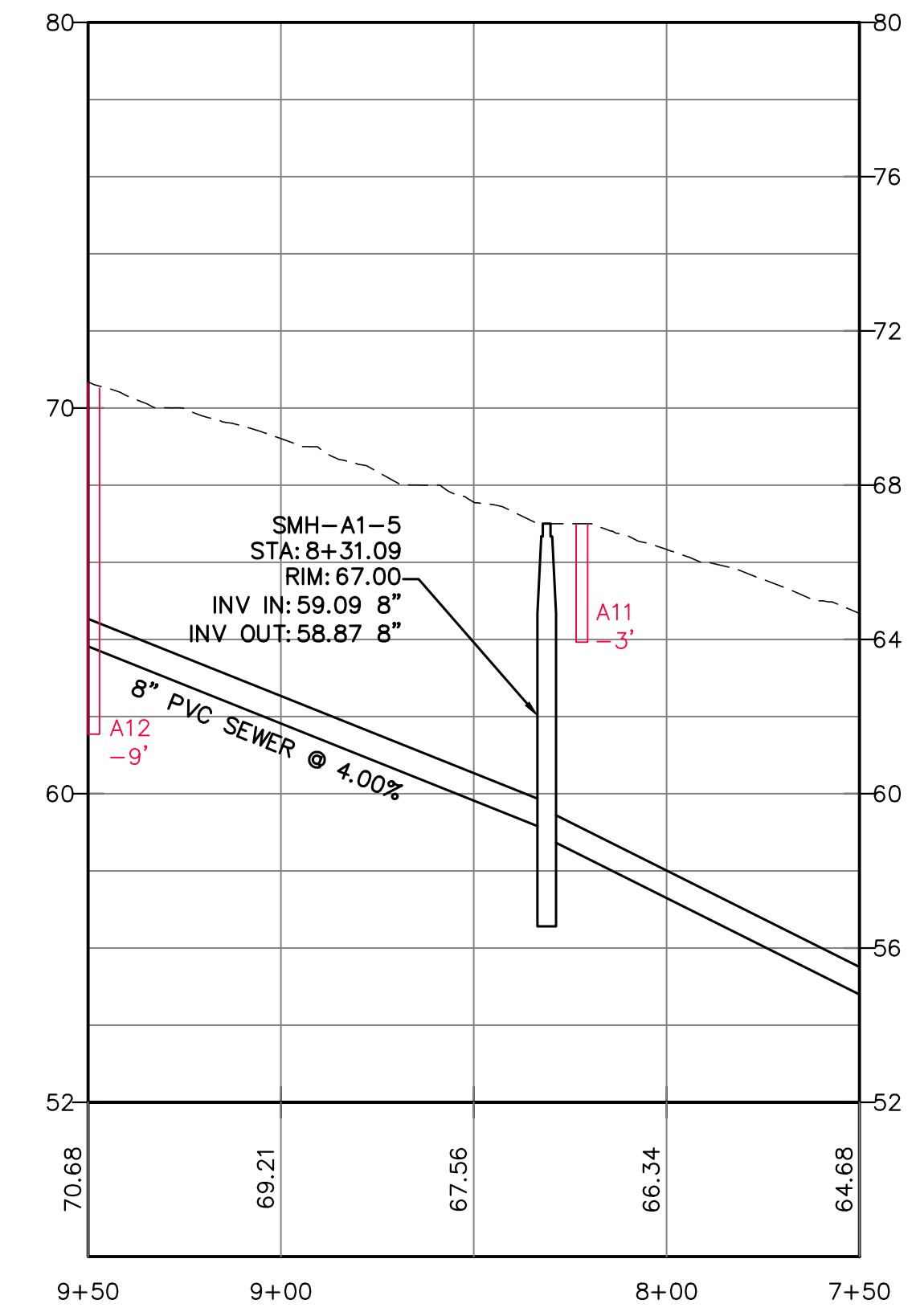
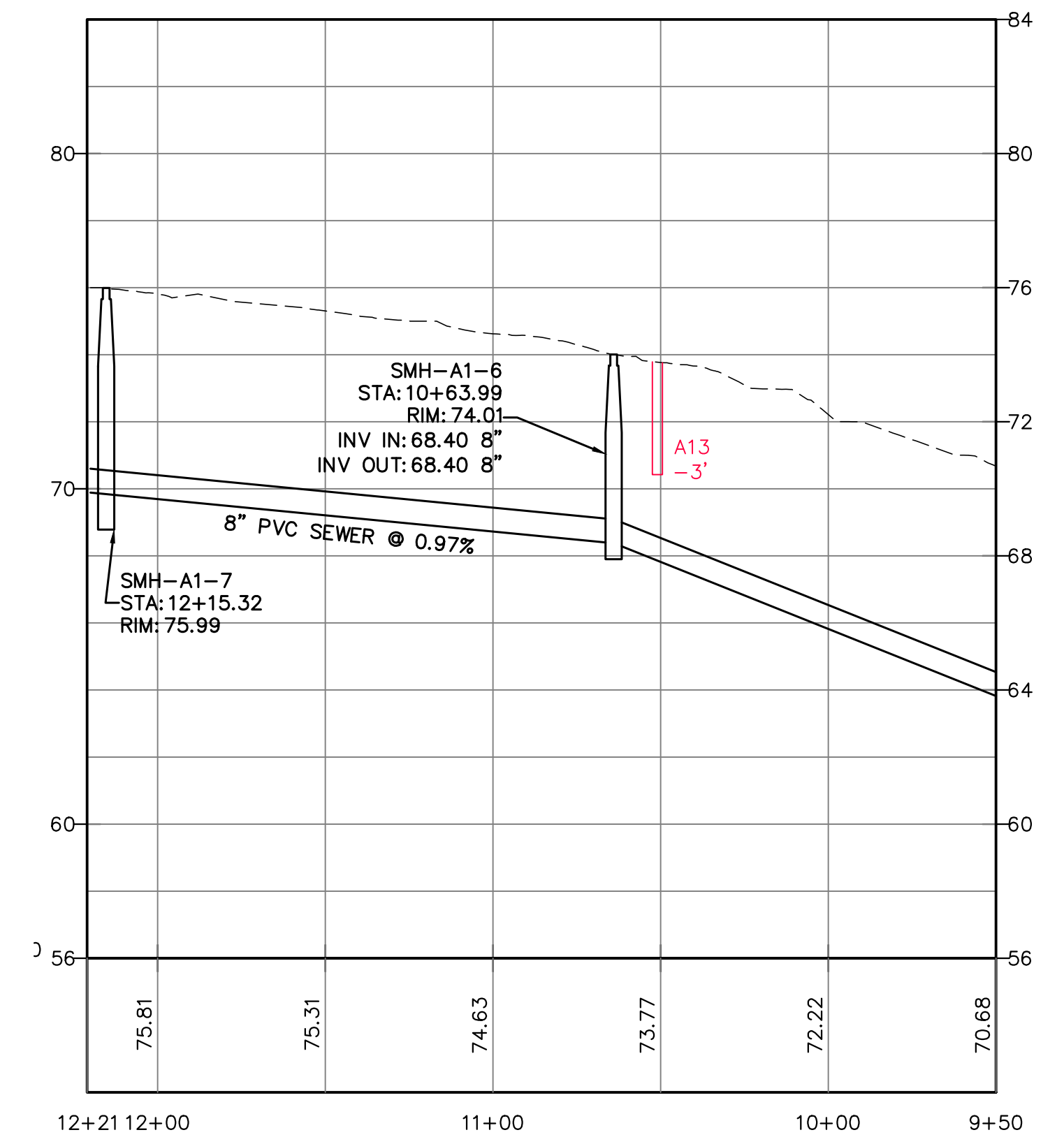
TITLE
PRELIMINARY DESIGN PLANS

DATE	SCALE
2026.02.06	1"=40'
DRAWN BY KLD	DESIGNED BY JED
CHECKED BY JEE	
PROJECT No. 4010398.001	
DRAWING No. WFM10	

FILE LOCATION: P:\CT\4010398 - ALL OF US AT NORTH, LLC\988.001 MONTVILLE DEVELOPMENT 2025 - S\A02-CAD_FILES\CIVIL\PRODUCTION PLANS\SEWER DWG. 2026.03.24, 2:40 PM



- NOTES**
1. THIS PLAN IS COMPILED FROM OTHER MAPS, RECORD RESEARCH OR OTHER SOURCES OF INFORMATION. IT IS NOT TO BE CONSTRUED AS HAVING BEEN OBTAINED AS THE RESULT OF A FIELD SURVEY, AND IS SUBJECT TO SUCH CHANGE AS AN ACCURATE SURVEY MAY DISCLOSE. HORIZONTAL DATUM IS NAD 83. VERTICAL DATUM IS NAVD 88.
 2. PROPERTY LINES ARE BASED ON TOWN OF MONTVILLE ASSESSORS MAPS.
 3. TOPOGRAPHY IS FROM CONNECTICUT 2023 LIDAR DIGITAL ELEVATION MODEL (DEM)
 4. GEOGRAPHIC FEATURES ARE COMPILED FROM CONNECTICUT AERIAL IMAGERY
 5. UNDERGROUND UTILITY, STRUCTURE AND FACILITY LOCATIONS DEPICTED AND NOTED HEREON HAVE BEEN COMPILED, IN PART, FROM RECORD MAPPING SUPPLIED BY THE RESPECTIVE UTILITY COMPANIES OR GOVERNMENT AGENCIES. THESE LOCATIONS MUST BE CONSIDERED AS APPROXIMATE IN NATURE. THE SIZE, LOCATION AND EXISTENCE OF ALL SUCH FEATURES MUST BE FIELD DETERMINED AND VERIFIED BY THE APPROPRIATE AUTHORITIES PRIOR TO CONSTRUCTION. CALL BEFORE YOU DIG 1-800-922-4455.



REV	DATE	DESCRIPTION	BY	CHK
DRAWING ISSUE STATUS				
NOT FOR CONSTRUCTION				
		HALEY WARD ENGINEERING ENVIRONMENTAL SURVEYING 2210 Main Street, P.O. Box 1088 Glastonbury, Connecticut 06033 860.659.3100		
PROJECT: ALL OF US NORTH LLC 27 NORTH ST, HYANNIS, MASSACHUSETTS 02601 WATER & SEWER INFRASTRUCTURE IMPROVEMENTS MONTVILLE, CONNECTICUT				
TITLE: PRELIMINARY DESIGN PLANS				
DATE: 2026.02.06		SCALE: 1"=40'		
DRAWN BY: KLD	DESIGNED BY: JED	CHECKED BY: JEE		
PROJECT No.: 4010398.001				
DRAWING No.:		S1		