

FlexStorm Pure™ Inlet Filter

FlexStorm Pure inlet filters are the preferred choice for permanent inlet protection and stormwater runoff control. Constructed of stainless steel, FlexStorm Pure inlet filters will fit any drainage structure and are available with site-specific filter bags providing various levels of filtration.

- Applications**
- Car washes
 - Commercial
 - Loading ramps
 - Industrial

- Features**
- Custom stainless steel frames are configured to fit into any drainage structure
 - Flow and bypass rates meet specific inlet requirements
 - Works below grade with bypass to drain area if bag is full
 - Installed and maintained by one worker, without additional equipment

- Gas stations
- Parking lots
- Dock drains
- Maintenance

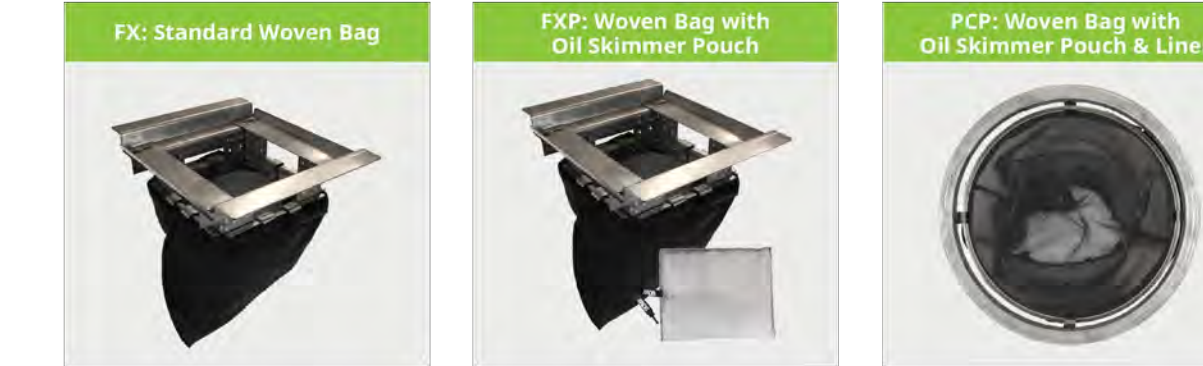
- Benefits**
- Stainless steel frame provides extended service life
 - Easily replaceable filter bags
 - Meets stringent removal requirements:
 - All bags rated >84% removal efficiency
 - Bag styles available to remove hydrocarbon oils when required



FlexStorm Pure™ Bag Options

FlexStorm Pure, for permanent applications, has three filter bag options available to meet your specific needs. They have varying degrees of TSS and hydrocarbon oil removal properties.

FlexStorm Filter Bags



Filter Bag Test Results

FX	TSS Filtration Efficiency = 85% ¹
PCP	TSS Filtration Efficiency = 97% ¹

¹Large scale, full party testing per ASTM D 7515 modified to tablet filter

Filter Bag Specifications & Capabilities

Bag Type (F/N)	Geotextile Flow Rate (gpm/ft²)	Min. A.O.S. (US Sieve)
Woven (FX/FXP)	200	40
Post Construction (PCP)	137	140

Total Bypass Capacity

Bypass capacity will vary with each size drainage structure. FlexStorm designs filter bypass to meet the minimum design flow of the particular drainage structure.

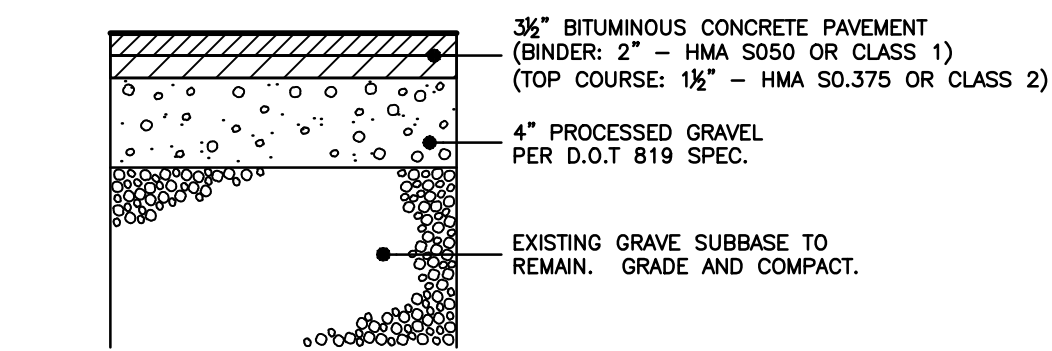
Standard Bag Sizes (match frame sizes)	Solids Storage Capacity (ft³/m³)	Filtered Flow Rate at 50% Max (CFS)		Oil Retention (Oz)	
		FX	PCP	FXP	PCP
Small	1.6 (0.5)	1.2	0.8	89	168
Medium	2.1 (0.6)	1.7	1.2	89	204
Large	3.8 (1.2)	2.7	1.8	89	262
XL	4.2 (1.3)	3.6	2.4	178	319



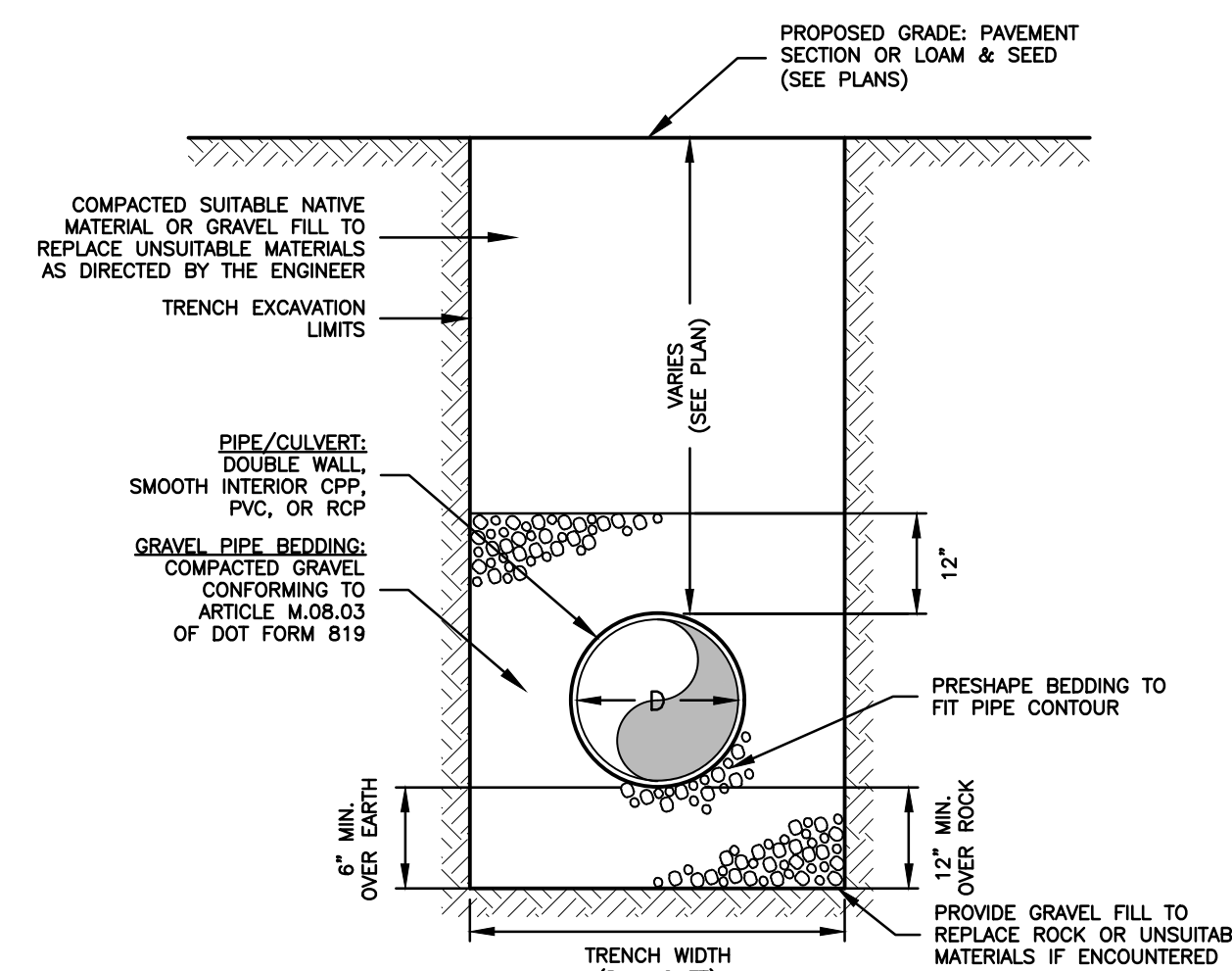
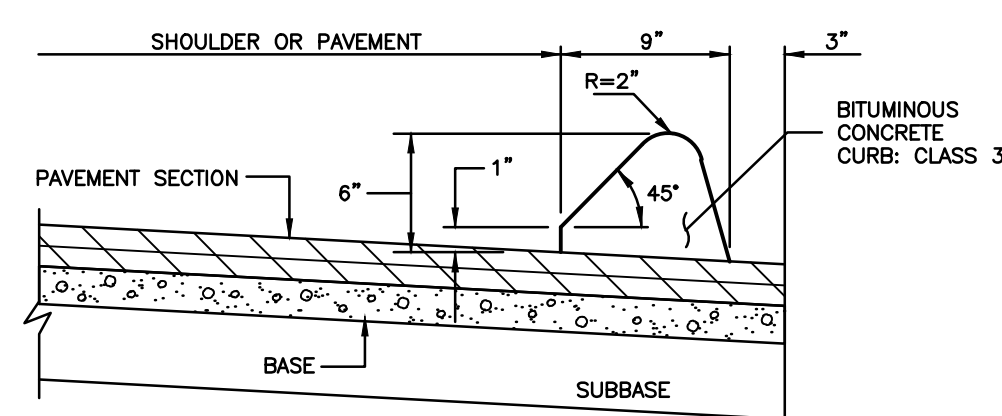
adspipe.com
800-821-6710

PERMANENT CATCH BASIN INLET FILTER DETAILS

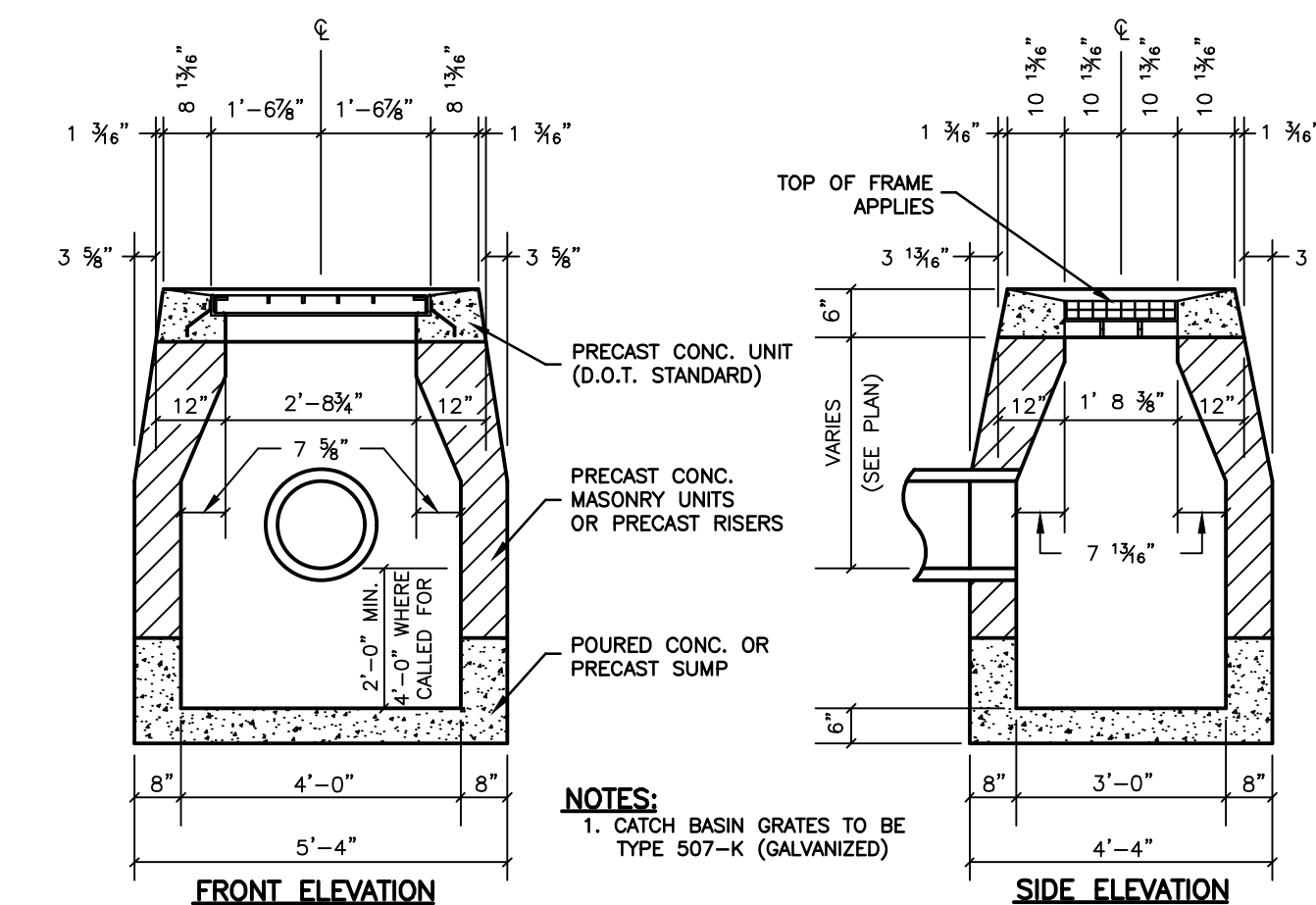
NOT TO SCALE



- NOTES:**
- CONTRACTOR SHALL BE RESPONSIBLE FOR THE REMOVAL AND DISPOSAL OF ALL BITUMINOUS PAVEMENT, GRAVEL (AS REQUIRED) AND ANY EXCESS MATERIALS.
 - PROVIDE CONTINUOUS TACK COAT ALONG EDGE WHEN MATCHING EXISTING PAVEMENT
 - CONTRACTOR TO PROVIDE COMPACTION ON ALL TRENCH BACKFILLS, EXCAVATIONS AND PAVEMENT BASES TO NOT LESS THAN 95% OF THE DRY DENSITY FOR THAT MATERIAL WHEN TESTED IN ACCORDANCE WITH AASHTO T160, METHOD D



- NOTES:**
- D=INSIDE DIAMETER OF PIPE/CULVERT.
 - TRENCH WIDTHS NOTED ARE SET TO ESTABLISH PAY LIMITS ONLY.
 - ALL EXCAVATIONS MUST MEET OSHA STANDARDS.
 - TRENCH COMPACTION SHALL BE PERFORMED IN 8" LAYERS UNLESS OTHERWISE APPROVED BY THE OWNER.
 - CONTRACTOR MUST PROVIDE COMPACTION ON ALL TRENCH BACKFILLS, EXCAVATIONS AND PAVEMENT BASES TO NOT LESS THAN 95% OF THE DRY DENSITY FOR THAT MATERIAL.
 - PIPE MUST BE GASKETED, WATER-TIGHT JOINTS MEETING ASTM D 3212 STANDARDS.



- NOTES:**
- CATCH BASIN GRATES TO BE TYPE 507-K (GALVANIZED)

APPROVED BY THE MONTVILLE PLANNING AND ZONING COMMISSION
CHAIRMAN, VICE CHAIRMAN, OR SECRETARY OF THE COMMISSION DATE

CLA Engineers, Inc.
CIVIL • STRUCTURAL • SURVEYING

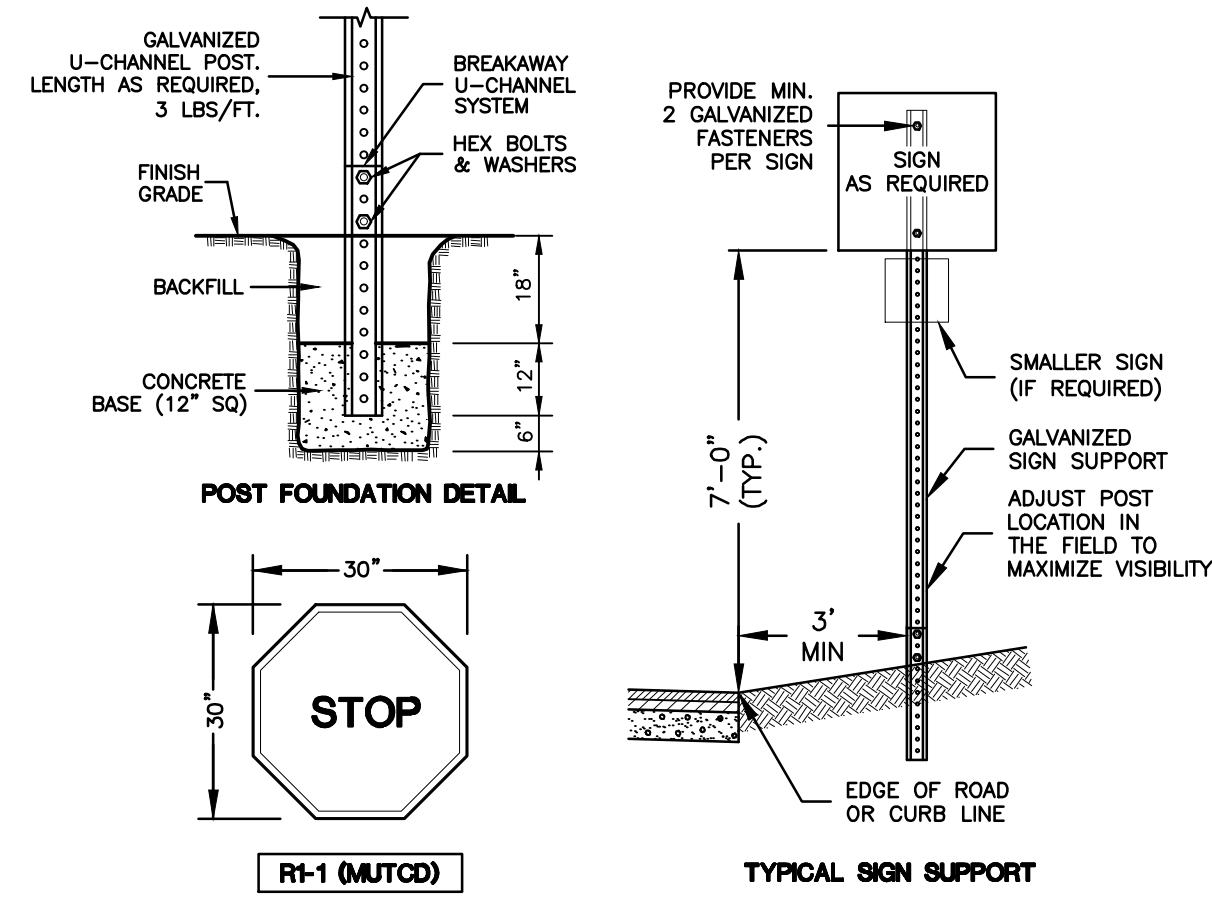
317 Main Street Norwich, CT 06360
(860) 886-1966 Fax (860) 886-0165

1	4/3/2026	P&Z SUBMITTAL	
No.	DATE	REVISION	

Plan Prepared for:
Town of Montville, Connecticut
Camp Oakdale
Pickleball Court Parking Lot Improvements
20 Simpson Lane

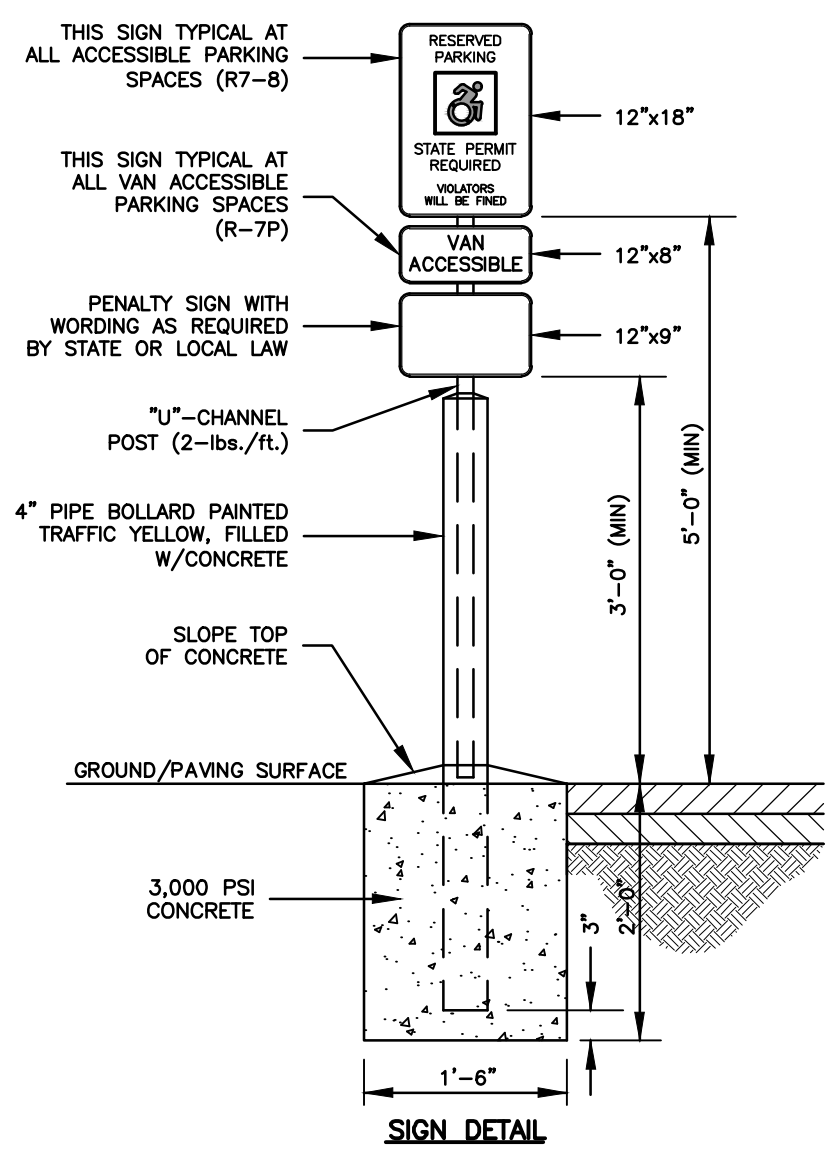
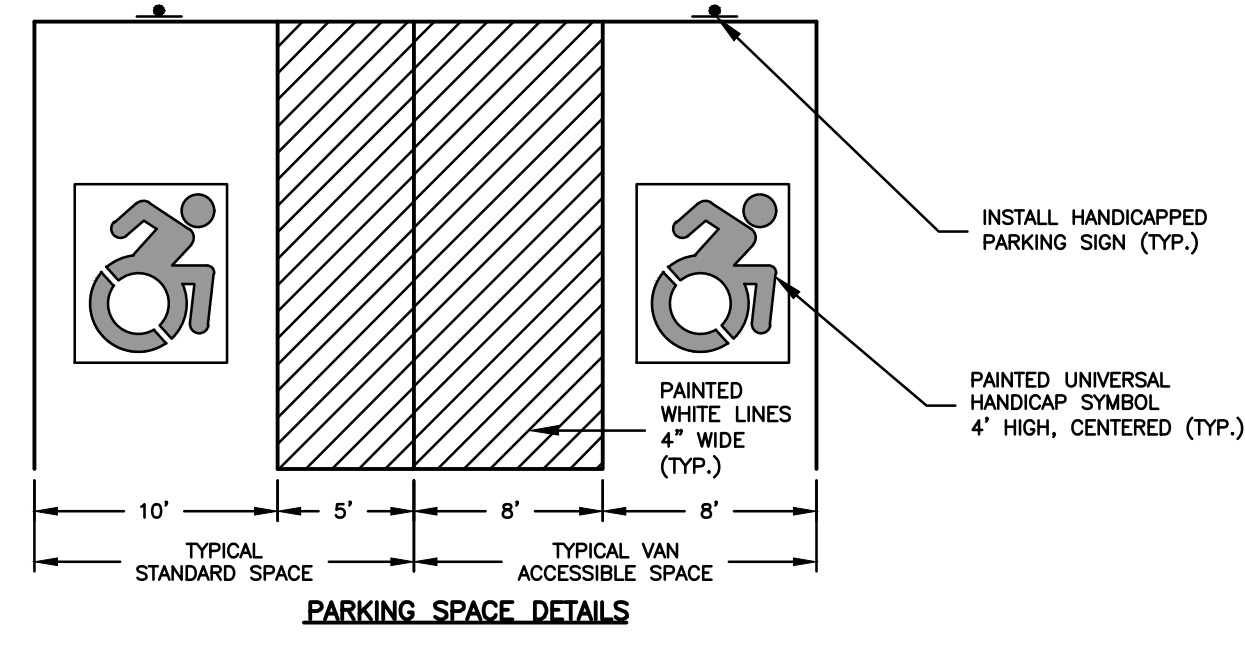
Project No. CLA-7928M
Proj. Engineer K.J.H.
Date: 3/30/2026
Sheet No. 3 of 4

Construction Details & Notes



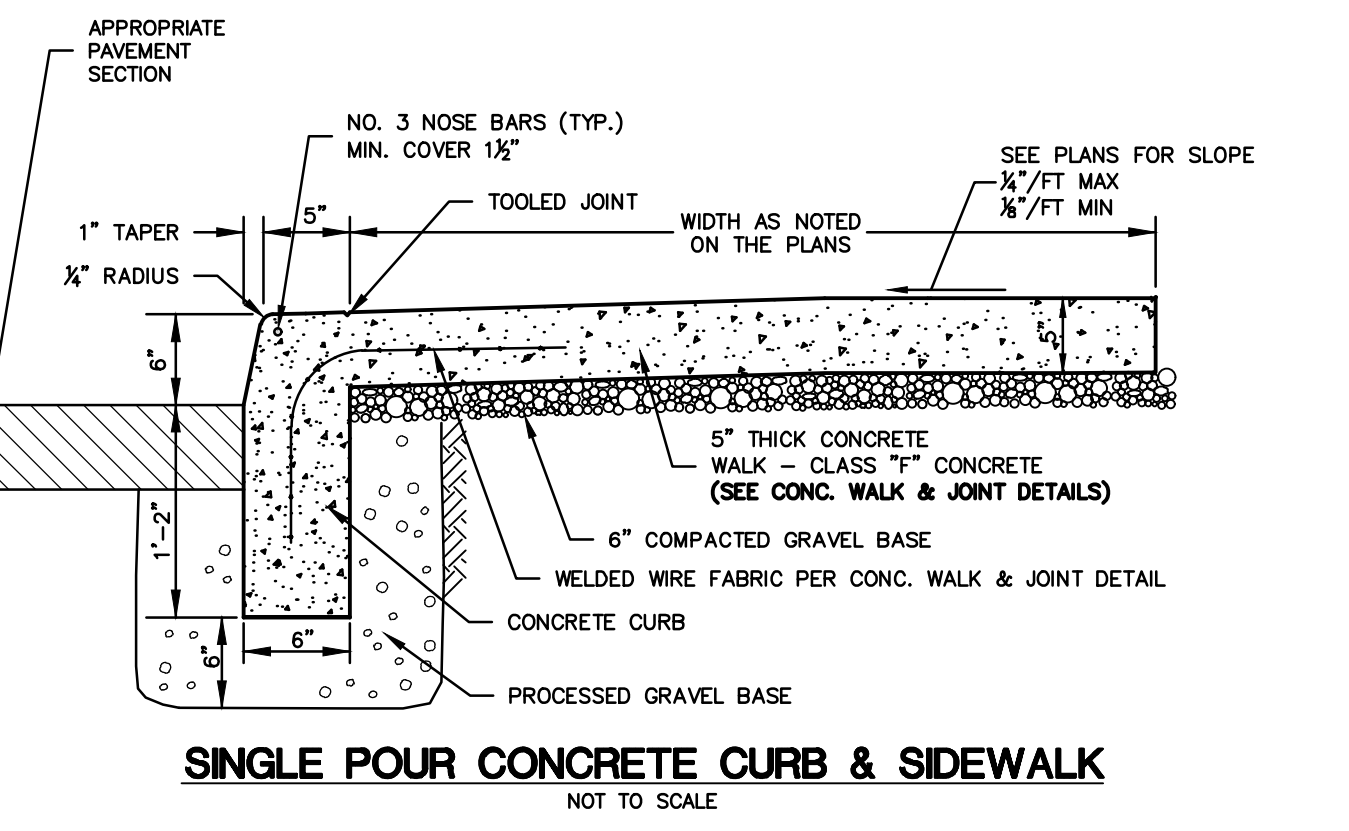
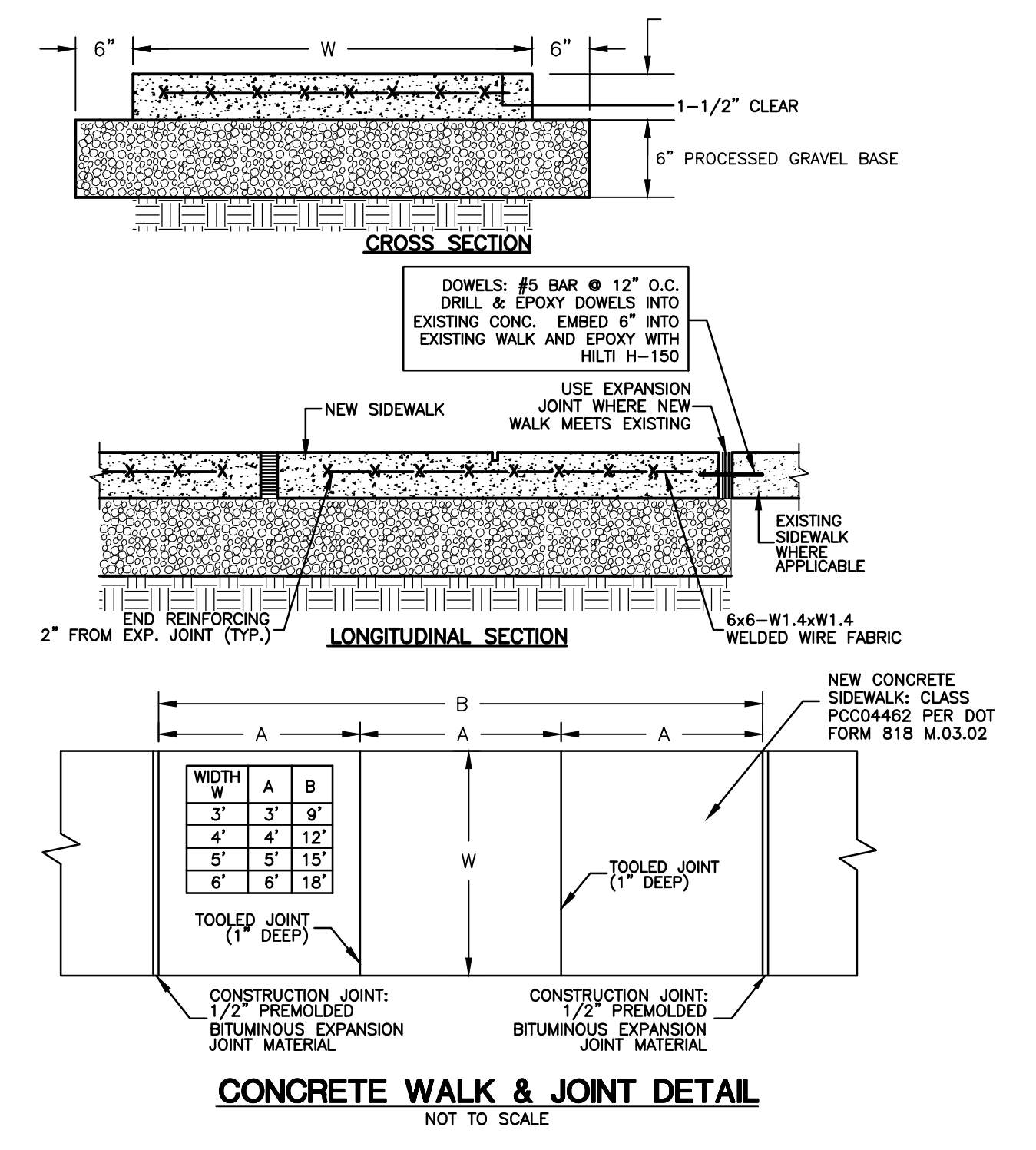
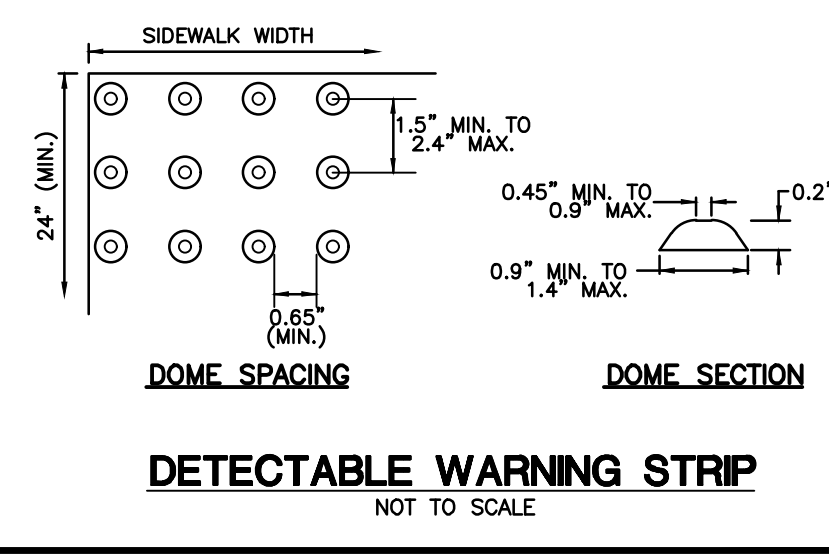
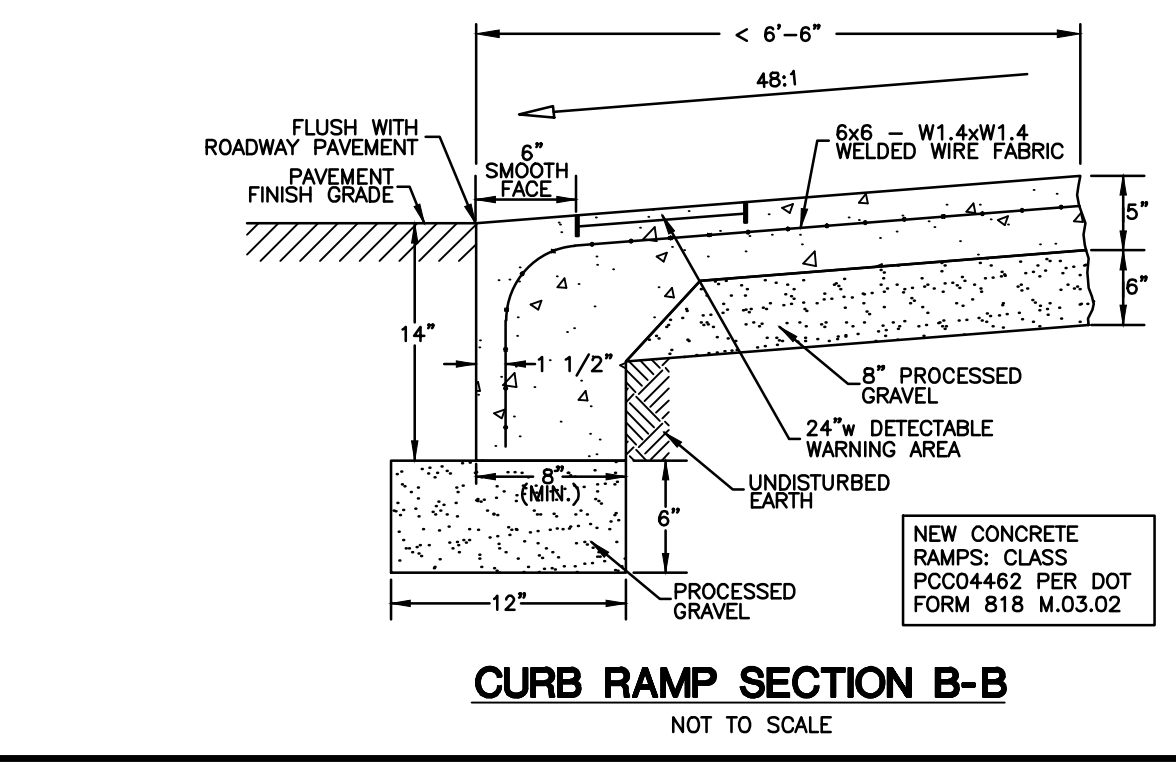
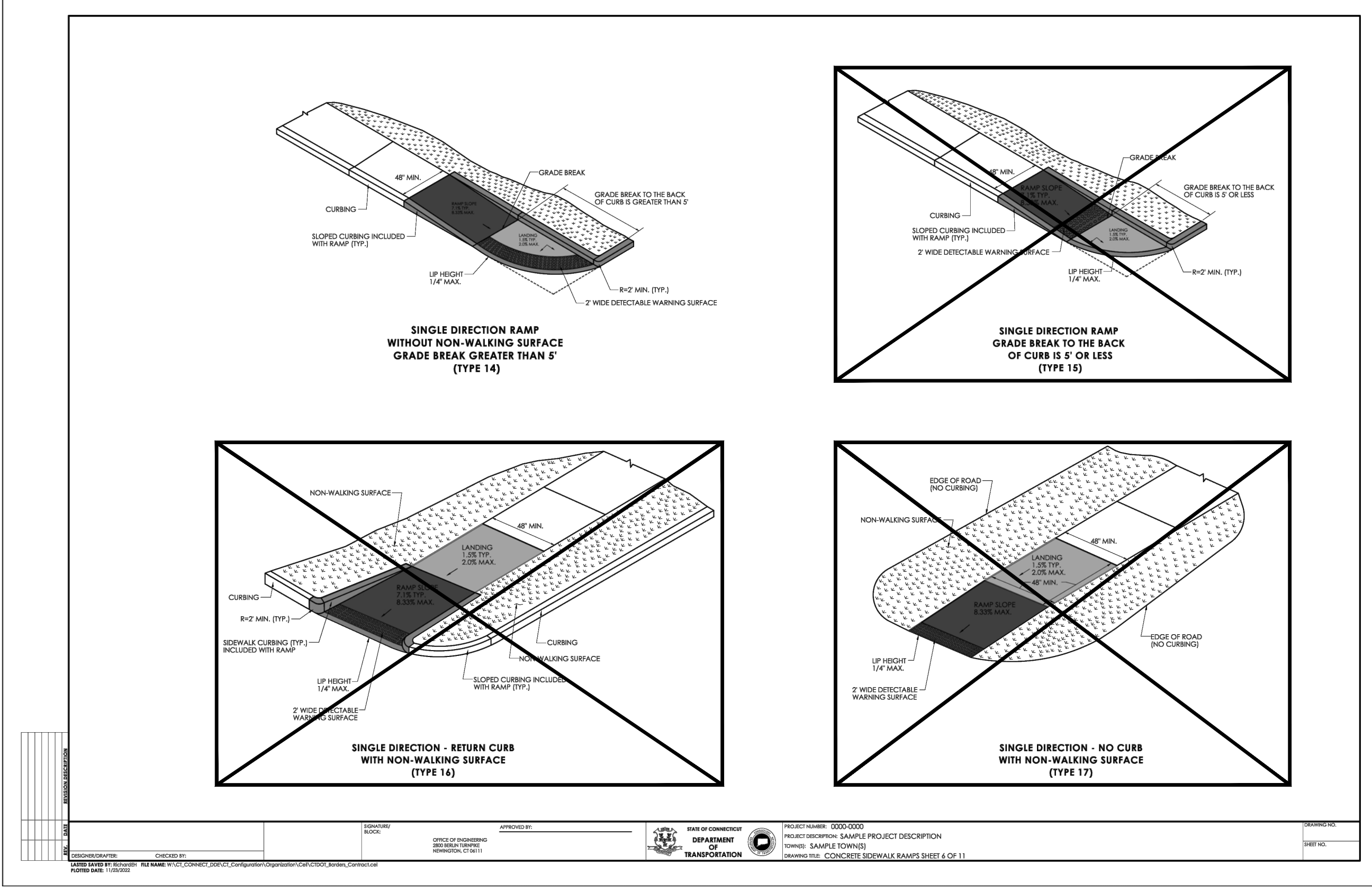
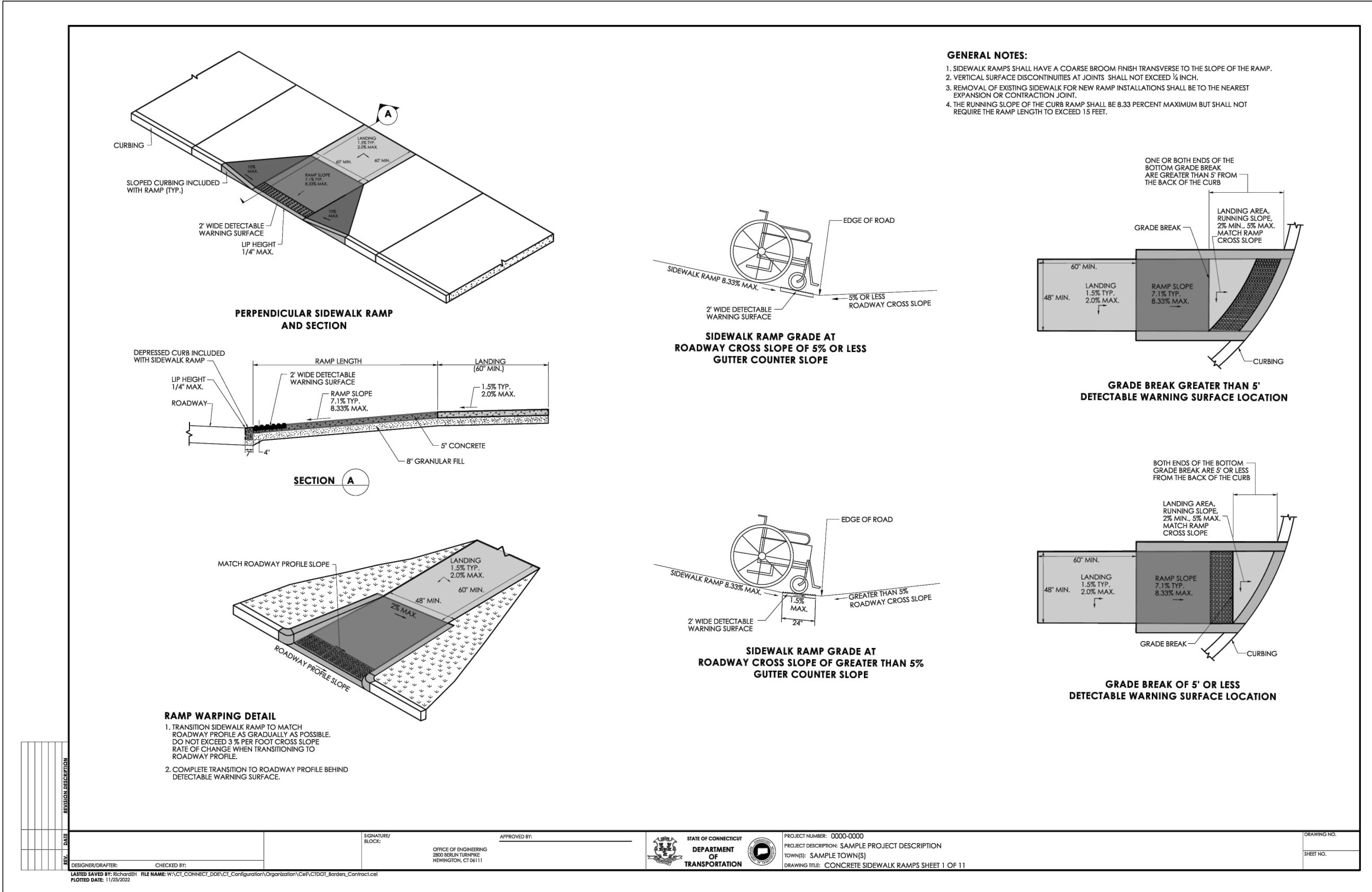
- NOTES:**
- SIGNS AND PAINTED PAVEMENT MARKINGS SHALL CONFORM TO THE MANUAL ON UNIFORM TRAFFIC CONTROL DEVICES FOR STREETS AND HIGHWAYS, 2025 EDITION.
 - SIGNS SHALL BE INSTALLED IN ACCORDANCE WITH STATE OF CT D.O.T. STANDARDS.
 - SIGNS AND POSTS SHALL CONFORM TO ARTICLE 12.08 OF THE DOT 819 SPECIFICATIONS.
 - SIGN COLORS SHALL CONFORM TO DOT SPECIFICATIONS. ALL COLORS SHALL BE RETROREFLECTIVE WITH THE EXCEPTION OF BLACK WHICH SHALL BE GRAPE.
 - SIGNS SHALL BE "BRIGHT WIDE ANGLE RETROREFLECTIVE SHEETING".
 - SIGNS SHALL BE ALUMINUM, 0.100 THICK UNLESS OTHERWISE SPECIFIED.
 - PAINTED PAVEMENT MARKINGS SHALL CONFORM WITH ARTICLE 12.09 OF THE DOT 819.

TRAFFIC SIGNING & PAVEMENT MARKING DETAILS
NOT TO SCALE



- NOTES:**
- ALL ADA ACCESSIBLE SIGNING, DIMENSIONS AND SPACE MARKINGS SHALL BE IN ACCORDANCE WITH COS 14-253(h) AND THE 2022 PORTION OF THE STATE BUILDING CODE.
 - ADA PARKING SPACES MAY SHARE A STRIPED ACCESS WAY.

ADA ACCESSIBLE PARKING SPACE AND SIGN DETAILS
NOT TO SCALE



APPROVED BY THE MONTVILLE PLANNING AND ZONING COMMISSION

CHAIRMAN, VICE CHAIRMAN, OR SECRETARY OF THE COMMISSION DATE

CLA Engineers, Inc.
Civil • Structural • Surveying

317 Main Street Norwich, CT 06360
(860) 886-1966 Fax (860) 886-0165

Project No. CLA-7928M
Proj. Engineer K.J.H.
Date: 3/30/2026
Sheet No. 4 of 4

Plan Prepared for:
Town of Montville, Connecticut
Camp Oakdale
Pickleball Court Parking Lot Improvements
20 Simpson Lane

Construction Details & Notes

1 4/3/2026 P&Z SUBMITTAL
No. DATE REVISION

Professional Engineer Seal: STATE OF CONNECTICUT, KENNETH J. HAYDEN, No. 24388, LICENSED PROFESSIONAL ENGINEER

X:\1000\1000\1000\Camp Oakdale Large Pavilion Site\Drawings\Bldg Drawings - Pickleball Parking Bldg - Site Plan.dwg