

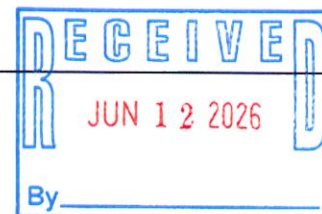


---

# Bringing Bag Drop to SNS #678 Montville, CT

Stop & Shop

2020 Norwich-New London Tpk. Montville, CT

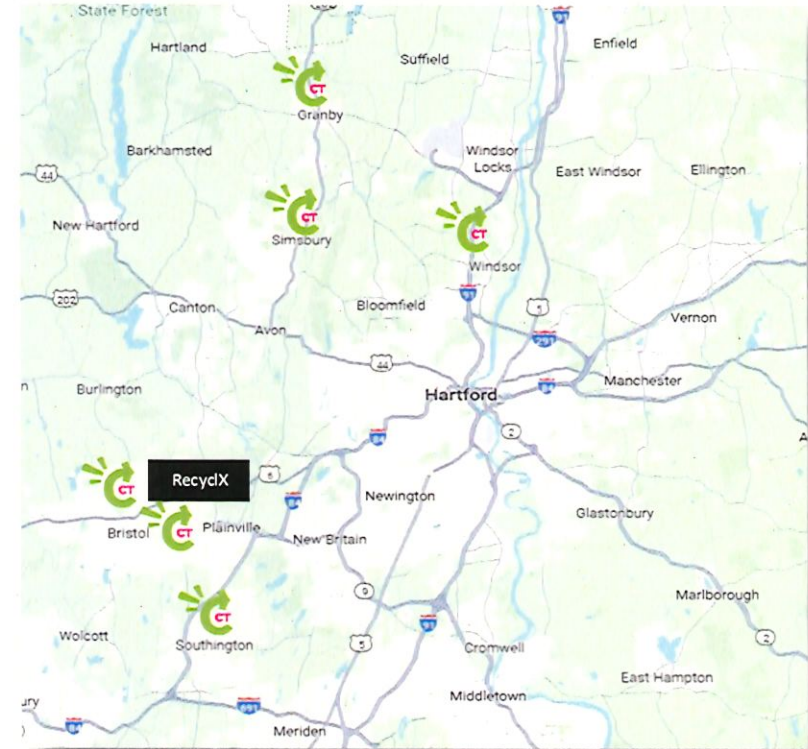
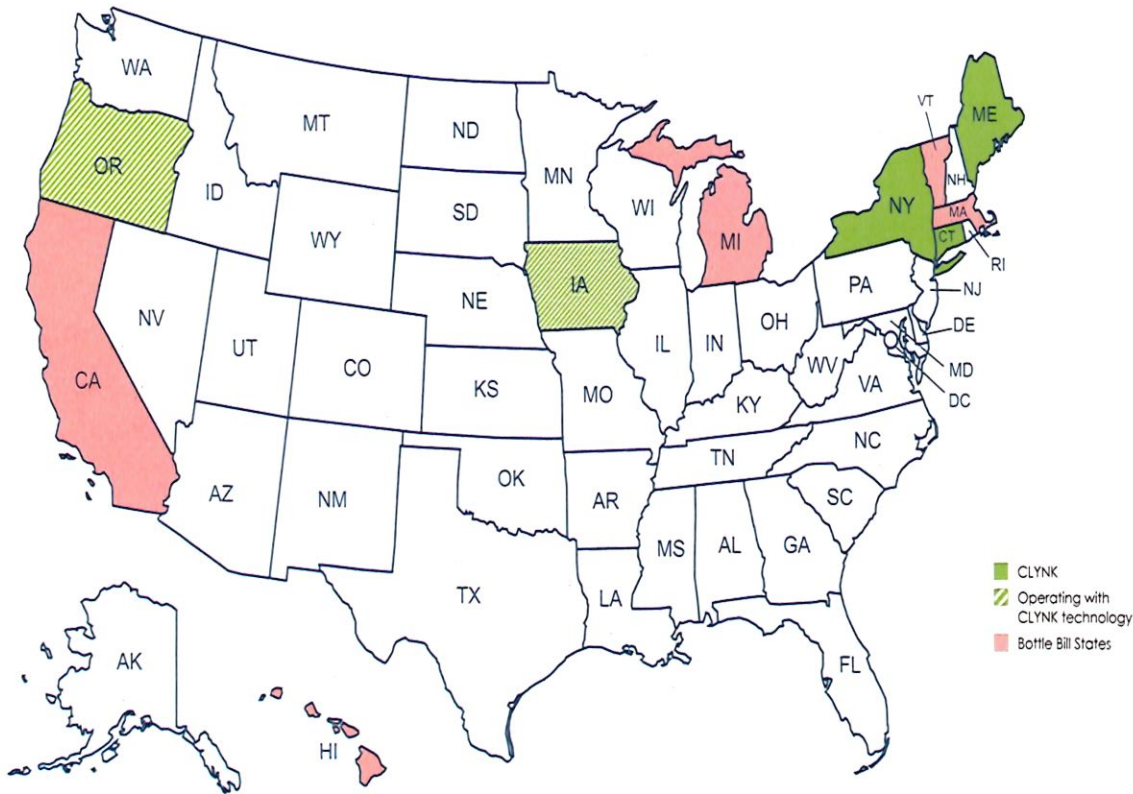


- Stop & Shop is working on a statewide roll out in Connecticut to install “Bag Drop” stations with CLYNK. This will increase recycling of redeemable bottles and cans in the state, while maintaining the state’s legal requirement for takeback at grocery retailers and other required locations.
- Bag Drop is a fourth modality to Curb Side Recycling, Hand Count Redemption Centers and Reverse Vending Machines for bottle and can redemption.
- This will replace in-store redemption through reverse vending machines at Stop & Shop locations in the future, with a convenient drop off process, making it cleaner, faster and easier for consumers to redeem containers and get their deposit funds returned to them.
- The station is only a drop off point for consumers, NO processing will be taking place on site. Consumer bags are typically picked up daily and taken to the processing center in Bristol, CT.
- With a statewide goal to exceed an 80% redemption rate, Bag Drop has outperformed traditional redemption methods by an additional 20% in our pilot locations, pushing total redemption closer to the statewide goal in the stores we have deployed in.



- Nearly 20 years in business, CLYNK is the pioneer of “Bag Drop” redemption
- Operating in 3 states - Connecticut, Maine, New York and licensed technology in Iowa and Oregon
- Over 210 Bag Drop locations in the field
- 2.5 Billion containers processed
- 2.8 Million visits annually
- \$3.5 Million in charity donations through CLYNK to Give Programs
- Over 200 employees across three processing facilities and a partner facility in Bristol, CT – RecyclX
- Acquired by TOMRA, the world's largest RVM company, October 2025

# Bottle Bill States



CLYNK is proud to operate in key Bottle Bill states, delivering smarter recycling solutions through our proprietary bag-drop technology. Our footprint continues to grow, expanding access to bag-drop in more communities.

Each icon on the map represents a CLYNK CT redemption center at a partnering Stop & Shop location, along with our processing center RecyclX.

# How **CLYNK** Works



Customers register via mobile app, web or in-store kiosk and CLYNK bags are purchased in store.



Customers print bag tags from CLYNK kiosk in front of store to identify bags to their account.



Customers drop bags of redeemable containers at CLYNK's Redemption Station in the Stop & Shop parking lot.



CLYNK transports scanned bags to the processing facility.



Containers are redeemed, sorted and returned to the manufacturer to be made into containers again.



Redemption value is credited to customer's account.



CLYNK receipt printed at kiosk inside store to be redeemed for cash or used towards grocery bill.



**This is purely a collection point for consumer drop off, no redemption processing takes place on site.**



## 100% Recycled or Recyclable Building Solution

- Made from recycled PET sourced from non-food grade plastics processed into structural foam core
- Transported with a mobile lift and can be positioned on any flat surface in minutes
- Gross Weight ~3,400 lbs.
- Building Size 8'w X 8'h
- Two length buildings 24' & 32'
- CCTV views inside and outside the station



- No need for parking lot trenching or power connections
- Powered by two solar panels with 360-degree alignment and a wind turbine
- Can operate for about 10 days without sun on battery back-up
- Cellular enabled



- Sustainability Stations are not like other parking lot bins – we are purpose built and not a collection point for other garbage



- Equipment reliability and servicing is improved – Advanced technology and local resources reduce any downtime



- Issues associated with current bottle redemption instore, like lines, lose containers and using shopping carts to hold dirty containers are eliminated



- Issues with trash, rodents, insects and odor are minimized by single bag drops into a remote and secure station



- Sustainability Stations are monitored via CCTV for cleanliness, exterior safety and interior volume levels

- Customer drop off typically takes 15 seconds per bag and bags are pre-filled prior to arriving for drop off, so no mess or additional trash at the station



- Sustainability Stations are typically picked up daily or every other day based on volume, most often during store hours – we strive to process bags and credit accounts in 2 business days or less





- Station lighting is minimal and dark sky compliant, relying on parking lot lights, complimented with low-level wattage, targeted downward and shielded on the station
- Stations mirror store operating hours, so no overnight drop off's



- Areas around the station are maintained by Stop & Shop Associates, Drivers for CLYNK and contractors to maintain cleanliness and to keep the stations free of snow and ice – each with a vested interest in maintaining a safe and clean customer experience







# Site Plans

## Station Placement Location



Updated site placement based on LL feedback. SNS RVP approved per LF.

## Site Locations

**Scope:**

Placement of an 8' x 32' CLYNK Sustainability Station in the parking lot, requiring the use of 5 parking stalls.

This is an unmanned, pre-fabricated unit used for the collection of redeemable bottles and cans via Bag Drop.

Station operates on solar and wind power generation, which requires unobstructed southern exposure, it is portable, with a gross weight of ~3,200 pounds.

Station is placed and shimmed on existing parking surface. No sitework or utilities required.

**Primary Location :**

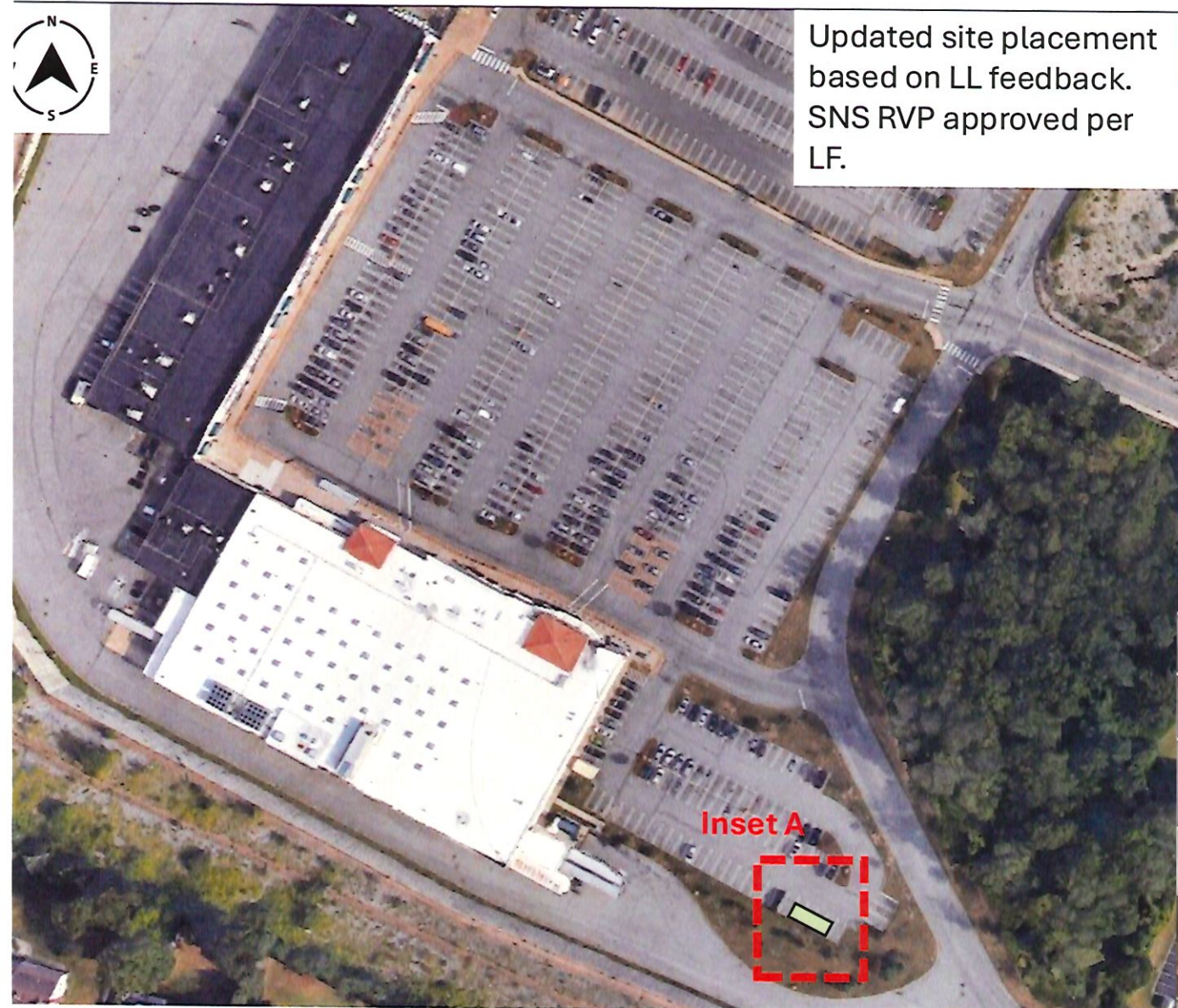


**Alternate Location:**



***Inset A Placement :***

Placement of an 8' x 32' CLYNK Sustainability Station with Bollards





# Appendix

Bottle Bill 101

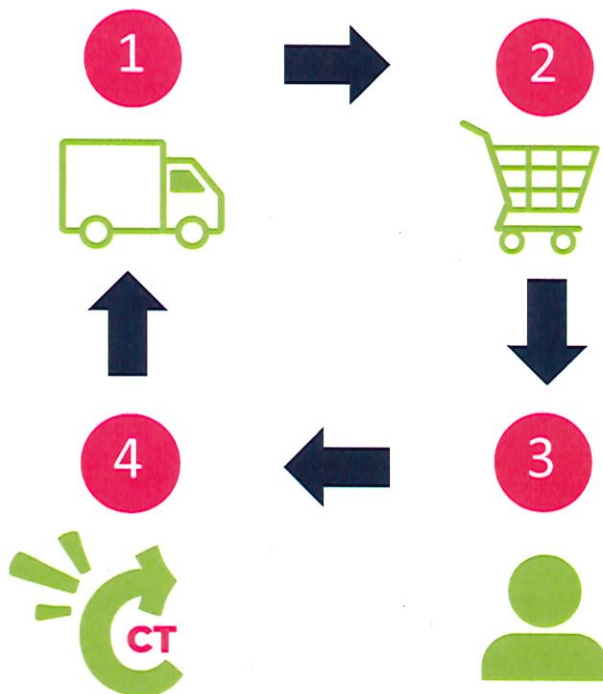
# How Does the Bottle Bill Work?

**Manufacturer, Bottling Company, or Distributor**

collects 10 cents for each container when product is sold to retailer

**CLYNK**

receives 10 cent deposit fee, plus handling and pick up / processing fee per container, from distributor or bottling company



**Retailer**

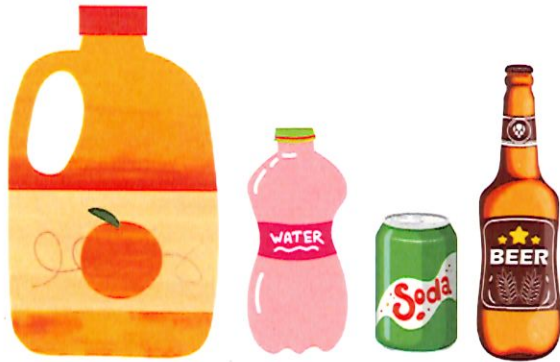
charges consumer 10 cents when the container is purchased in store

**Consumer**

recovers the full 10 cent deposit per container when returned to a licensed redemption center

**Note:** Deposit and Handling fee are set by the state. Pick up and Processing fee is set by the direct billing partner and CLYNK.

# Redemption vs. Recycling



## Redemption

Allows you to recover the deposit you paid on the purchase of each container according to the state bottle bill. Redeemed containers are recycled at food-grade quality to be manufactured into more bottles and cans.



## Recycling

Recovery and reprocessing of waste material into new products. These include a wide range of materials including paper, metal, glass and plastics.

**Recycling your redeemable containers forfeits your deposit and downcycles containers into lesser-grade recycled materials that cannot be made into food-grade products again.**

# What's Redeemable?

## Redeemable Beverage Categories



Beer, soda, water, sports drinks, energy drinks, juice, hard seltzer (carbonated malt-based beverages), tea, coffee, kombucha, plant water (e.g. coconut water)

## Non-Redeemable Beverage Categories



Wine, liquor, liquor-based malt beverages, milk, plant-based milks, mixers, meal replacement drinks, hard cider, aseptic packages, containers less than 150mL, liquor nips, containers larger than 2.5L of non-carbonated beverages, containers larger than 3L of carbonated beverages

Beverage containers MUST be purchased in the state of CT and have a scannable barcode to be eligible for redemption!