

**MONTVILLE WATER POLLUTION CONTROL AUTHORITY**  
**WASTEWATER TREATMENT FACILITY HEADWORKS IMPROVEMENTS**

**MONTVILLE, CT**

**CONTRACT NO. 2021-5**

\*\*\*\*\*

**ADDENDUM NO. 1**

**A. GENERAL**

1. The attention of all prospective bidders submitting proposals for the above referenced project is called to the following Addendum to the contract plans and specifications. The items set forth therein, whether of omission, addition, substitution, or clarification are all included in the proposed work.
2. Inclusion of this Addendum must be acknowledged by inserting its number on the appropriate page(s) of the Bid Forms. Failure to acknowledge any and all addenda in the above specified bid may be cause for rejection by the District on the grounds that it is non-responsive.

**B. MODIFICATIONS**

1. **ADD** - Roll call sheet from the March 31, 2021 Pre-Bid conference, Attachment 001
2. **ADD** - Site walk sign in sheet Dated April 6, 2021, Attachment 002
3. **DELETE AND REPLACE:** Project Manual, Section 00100, 'Instructions to Bidders', Article 8, Paragraph 8.1.i, delete and replace with the following,  
  
*"i. List of Subcontractors (Section 00485A) and Contractor Licensing (Section 00485C)."*
4. **DELETE AND REPLACE:** Project Manual, Section 00100, 'Instructions to Bidders', Article 13, Paragraph 13.7, delete and replace with the following,

*"Each Bidder will include with the Bid Submission a list of Subcontractors and their qualifications as required by Section 00485A herein. The apparent low bidder shall submit within 14 days of bid opening Section 00485B herein, to include Subcontractor's name, legal address, amount of proposed subcontract,*

*and specification sections and qualifications to perform the required Work. Bidders will provide this information for all Subcontractors whose subcontracts equal or exceed \$25,000.00."*

5. **DELETE AND REPLACE:** Project Manual, Section 14600, 'Hoists and Cranes', Article 1.2, Paragraph A, delete and replace with the following,

*"Furnish and install one manually operated chain hoist/trolley assembly mounted on an I beam with accessories as shown on the Drawings and described in this specification."*

6. **DELETE WITHOUT REPLACEMENT:** Project manual Sections 03400, 'Precast Concrete Structures', Section 03401, 'Precast Concrete Exterior Structures', and Section 04816, 'Concrete Unit Masonry Assemblies'.
7. **ADD:** To project manual, Specification Section 05513. 'Metal Ladders', Attachment 003.
8. **DELETE AND REPLACE:** Drawing M-02 with revision made to Detail 2/C-02 and added detail 3/M-02, Attachment 004.
9. **DELETE AND REPLACE:** Project Manual, Table of Contents, Attachment 005.

**C. CLARIFICATIONS**

1. **Question** - Would it be possible to just submit a list of subcontractors with the bid and follow up with their qualification packages if we are the low bidder or as a follow-up after the closing time?

**Response:** Refer to modifications B.3 to Project Manual Section 00100. All bids to include Project Manual Section 0485A, 'List of Subcontractors'. Apparent low bidder shall be required to submit Project Manual, Section 0485B 'Named Subcontractor Bidders Qualification Statement' within 14 days of bid opening.

2. **Question** - Reviewing sheet S-501 @ Guardrail (13/S-501), please provide the extent of the guardrail? Are there any gates? If so, please provide details and locations.

**Response:** Refer to drawing sheet M-02, Detail 2, Plan View, railing to completely enclose grate platform except at access ladder.

3. **Question** - It appears the following spec sections do not apply to this project. If they do, could you please clarify where they apply.

03400 PRECAST CONCRETE STRUCTURES

03401 PRECAST CONCRETE EXTERIOR STRUCTURES

03500 LEAKAGE TESTS FOR CONCRETE STRUCTURES  
04816 CONCRETE UNIT MASONRY ASSEMBLIES

**Response:** See modifications B.6. Section 03500, "Leakage Test For Concrete Structures' is applicable to grit tank construction.

4. **Question** - The ITB states the bidder shall hold a DAS Prequalification in Water and Sewer Lines, will a prequalification in Water Treatment Plants be acceptable as well?

**Response:** Yes.

5. **Question** - Hoist & Crane spec section 14600 states to provide two electric chain hoists. Looking at the plans it appears there is only 1 shown. Please confirm. Also, there appears to be no power going to the hoist on the electrical drawings and the specs read as though it is manual. Please confirm which it is and provide voltages required.

**Response:** Confirm one hoist required. Hoist does not require electric power.

\*\*\*\*\*

**END OF ADDENDUM NO. 1**

## **ATTACHMENT 001**



Town of Montville

**Contract 2021-5 - WWTF Headworks Improvements Project**  
**Pre-Bid Conference - March 31, 2021 – 9:00 a.m.**  
**Held Via Zoom Teleconference**



Name (Print)	Company/Agency	Phone	Email
Derek Albertson	Montville WPCA, Superintendent	-	-
Terry Hart	Town of Montville, Finance Director	-	-
Matthew Ranando	Martinez Couch and Associates, LLC	-	-
George Pendleton	Martinez Couch and Associates, LLC	-	-
Brett Nemeth	Associated Construction Company	-	-
Dave Allen	Kovacs Construction Corporation	-	-
Mike Petrucci	RH White Construction Co., Inc.	-	-
R. Lodeser	RH White Construction Co., Inc.	-	-
Rodney Van Deusen	Weston and Sampson CMR, Inc.	-	-
Nate Carlson	Delray Contracting, Inc.	-	-

## **ATTACHMENT 002**



Town of Montville

Contract 2021-5 - WWTF Headworks Improvements Project  
Site Walk Sign-In Sheet - April 6, 2021 – 10:00 a.m.  
Water Pollution Control Facility, 83 Pink Row, Uncasville, CT



Name (Print)	Company/Agency	Phone	Email
Roger Barshaw	Association Construction	860-460-5911	RRB@ACC GC.COM
Tyson J Burk	O&G Industries Inc.	860-387-9985	TYsonburk@ogind.com
Mike Petrucci	RH White	860-832-3215	MPetrucci@RHWHITE.COM
George Pundleton	MCA	860-436-4364	gpundleton@martinezcouch.com
MATT RANANDO	MARTINEZ COUCH	860-436-4364	mrando@martinezcouch.com

## **ATTACHMENT 003**



SECTION 05513  
METAL LADDERS

PART 1 - GENERAL

1.1 RELATED DOCUMENTS

- A. Drawings and general provisions of the Contract, including General and Supplementary Conditions and Division 01 Specification Sections, apply to this Section.

1.2 SUMMARY

- A. Section Includes
  - 1. Aluminum Fixed Vertical Ladders.
- B. RELATED SECTIONS
  - 1. Section 05510 - Miscellaneous Aluminum Fabrications.
  - 2. Section 05521 - Pipe Tube and Railings

1.3 REFERENCES

- A. ANSI A14.3: Ladders - Fixed - Safety Requirements.
- B. OSHA
  - 1. 1910.23: Ladders.
  - 2. 1910.28: Duty to have fall protection and falling object protection.
  - 3. 1910.29: Fall protection systems and falling object protection-criteria and practices.

1.4 PERFORMANCE REQUIREMENTS

- A. Delegated Design: Design metal ladders, including comprehensive engineering analysis by a qualified professional engineer, using performance requirements and design criteria indicated.
- B. Structural Performance : Metal ladders shall withstand the effects of gravity loads and the following loads and stresses within limits and under conditions indicated.
  - 1. Capacity: Unit shall support a 1,500 lb (680 kg) loading without failure.
  - 2. Uniform Load: 100 lbf/sq. ft.
  - 3. Concentrated Load: 300 lbf applied on an area of 4 sq. in..
  - 4. Uniform and concentrated loads need not be assumed to act concurrently.
  - 5. Ladder Framing: Capable of withstanding stresses resulting from railing loads in addition to loads specified above.
  - 6. Limit deflection of treads, platforms, and framing members to L/360.
- C. Structural Performance of Railings: Railings shall withstand the effects of gravity loads and the following loads and stresses within limits and under conditions indicated.

1. Handrails and Top Rails of Guards:
  - a. Uniform load of 50 lbf/ft. applied in any direction.
  - b. Concentrated load of 200 lbf applied in any direction.
  - c. Uniform and concentrated loads need not be assumed to act concurrently.

## 1.5 SUBMITTALS

- A. Submit under provisions of Section 01300.
- B. Manufacturer's data sheets on each product to be used, including:
  1. Preparation instructions and recommendations.
  2. Storage and handling requirements and recommendations.
- C. Shop Drawings for Ladders: Plan and section of ladder installation. Include plans, elevations, sections, details, and attachments to other work.
- D. Delegated-Design Submittal: For installed products indicated to comply with performance requirements and design criteria, including analysis data signed and sealed by the qualified professional engineer responsible for their preparation.
- E. Qualification Data: For qualified professional engineer.

## 1.6 COORDINATION

- A. Coordinate installation of anchorages for metal ladders. Furnish setting drawings, templates, and directions for installing anchorages, including sleeves, concrete inserts, anchor bolts, and items with integral anchors, that are to be embedded in concrete or masonry. Deliver such items to Project site in time for installation.

## 1.7 DELIVERY, STORAGE, AND HANDLING

- A. Store products in manufacturer's unopened packaging until ready for installation.
- B. Store products until installation inside under cover. If stored outside, under a tarp or suitable cover.

## 1.8 WARRANTY

- A. Limited Warranty: Five years against defective material and workmanship, covering parts only, no labor or freight. Defective parts, if deemed so by the manufacturer, will be replaced at no charge, freight excluded, upon inspection at manufacturer's plant which warrants same.

## PART 2 - PRODUCTS

### 2.1 MANUFACTURERS

- A. Manufacturer: Precision Ladders, LLC, P. O. Box 2279 ; Morristown, TN 37816-2279; Tel: 423-586-2265; Email: info@PrecisionLadders.com; Web: www.PrecisionLadders.com
- B. Requests for substitutions will be considered in accordance with provisions of Section 01630.

## 2.2 MATERIALS

- A. Comply with requirements of Section 05510, Section 2.2 - Materials unless otherwise noted.

## 2.3 FASTENERS & ANCHORAGE

- A. Anchorage shall be provided where necessary for fastening miscellaneous metal items securely in place. Anchorage not otherwise specified or indicated shall include slotted inserts made to engage with the anchors, expansion shields, and power-driven fasteners when approved for concrete; toggle bolts for masonry; machine and carriage bolts for aluminum.
- B. ASTM A193 GRB8 stainless steel bolts with (2) stainless steel plate washers and ASTM A194 GRF8 nuts.

## 2.4 ALUMINUM FIXED VERTICAL LADDER

- A. Aluminum Fixed Vertical Ladder and Components: Ladder, walk-thru, side rails, mounting brackets, and finishes.
- B. Components:
  - 1. Ladder Stringer: 2-1/2 inch by 1-1/16 inch by 1/8 inch (64 mm by 27 mm by 3 mm) extruded 6005-T5 aluminum channel. Pitch: 90 degrees.
  - 2. Ladder Tread: 2-1/4 inch by 3/4 inch by 1/4 inch (57 mm by 19 mm by 6 mm) extruded 6005-T5 aluminum with deeply serrated top surface.
  - 3. Ladder Mounting Bracket: 8-1/2 inch by 2 inch by 3 inch by 1/4 inch thick (216 mm by 51 mm by 76 mm by 6 mm) aluminum angle.
  - 4. Walk-Thru:
    - a. Hand Rails: 1-1/4 inch (32 mm) aluminum square tube with rounded edges.
    - b. Mounting Brackets: 4 inch by 4 inch by 1/4 inch (102 mm by 102 mm by 6 mm) aluminum.
    - c. Side Rails: 42 inch (1067 mm) side rail extension for through ladder exits.
  - 5. Finishes:
    - a. Clear Anodized

## 2.5 FABRICATION

- A. Completely fabricate ladder ready for installation before shipment to the site.
- B. Fabricate items with joints neatly fitted and properly secured.
- C. Fit and shop assemble in largest particle sections for delivery to site.
- D. Grind exposed welds smooth and flush with adjacent finished surfaces.

- E. Exposed Mechanical Fastenings: Flush countersunk screws or bolts unobtrusively located consistent with design or structure, except where specifically noted otherwise.
- F. Make exposed joints flush butt type hair line joints where mechanically fastened.
- G. Supply components required for proper anchorage of metal fabrications. Fabricate anchorage and related components of same material and finish as metal fabrication, unless otherwise specified in schedule herein.

### PART 3 - EXECUTION

#### 3.1 EXAMINATION

- A. If substrate preparation is the responsibility of another installer, notify Engineering of unsatisfactory preparation before proceeding.
- B. Examine materials upon arrival at site. Notify the carrier and manufacturer of any damage.

#### 3.2 INSTALLATION

- A. Install in accordance with approved submittals.
- B. Obtain Engineer's review prior to site cutting or making adjustments which are not part of scheduled work.
- C. Install items square and level, accurately fitted and free from distortion or defects.
- D. Make provision for erection stresses by temporary bracing. Keep work in alignment.
- E. Replace items damaged in course of installation.
- F. Perform field welding in accordance with AWS D1.1.
- G. After installation, touch-up field welds and scratched and damaged surfaces.
- H. Supply to appropriate sections, items requiring to be cast into concrete or embedded in masonry, complete with necessary setting templates.

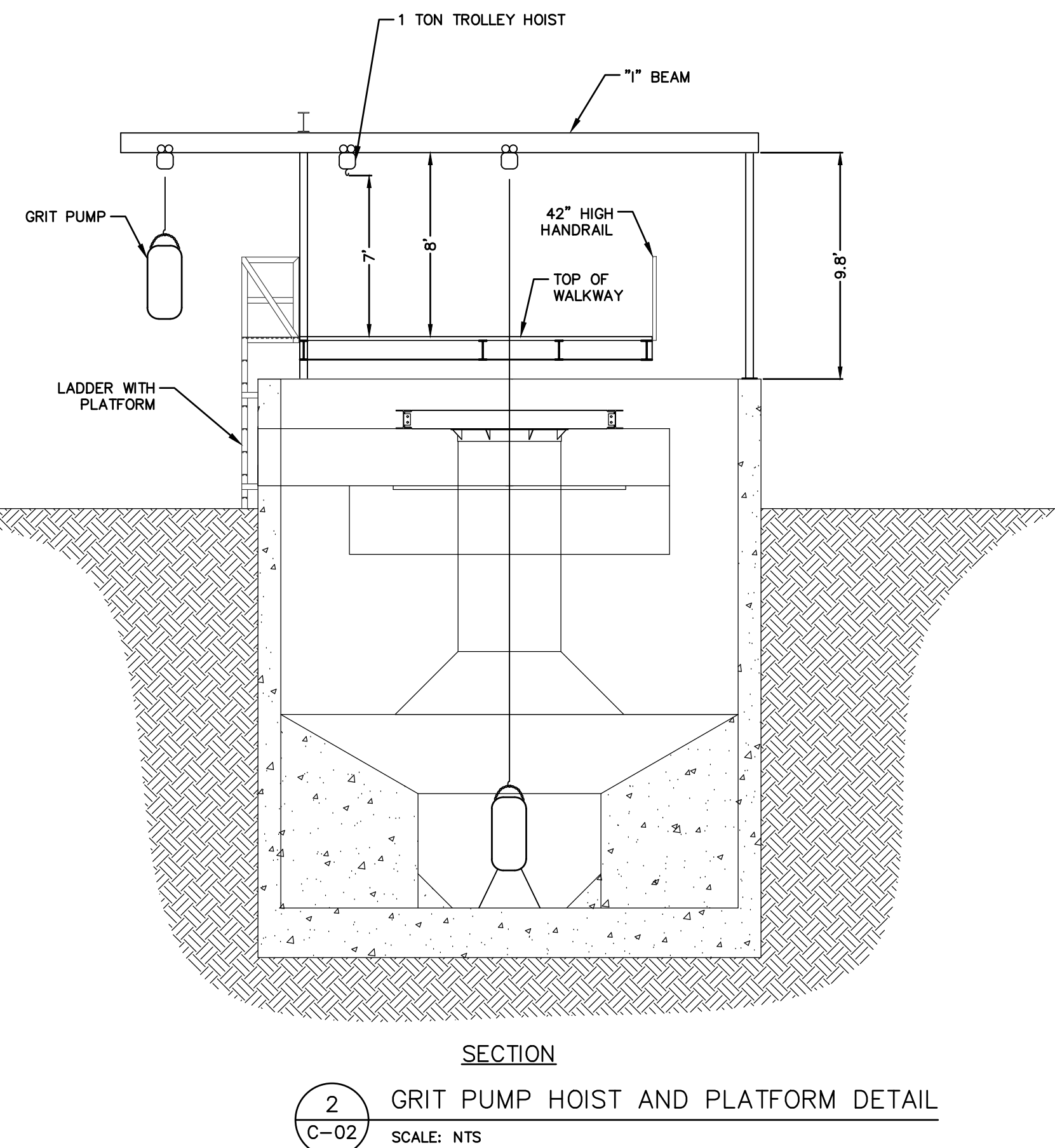
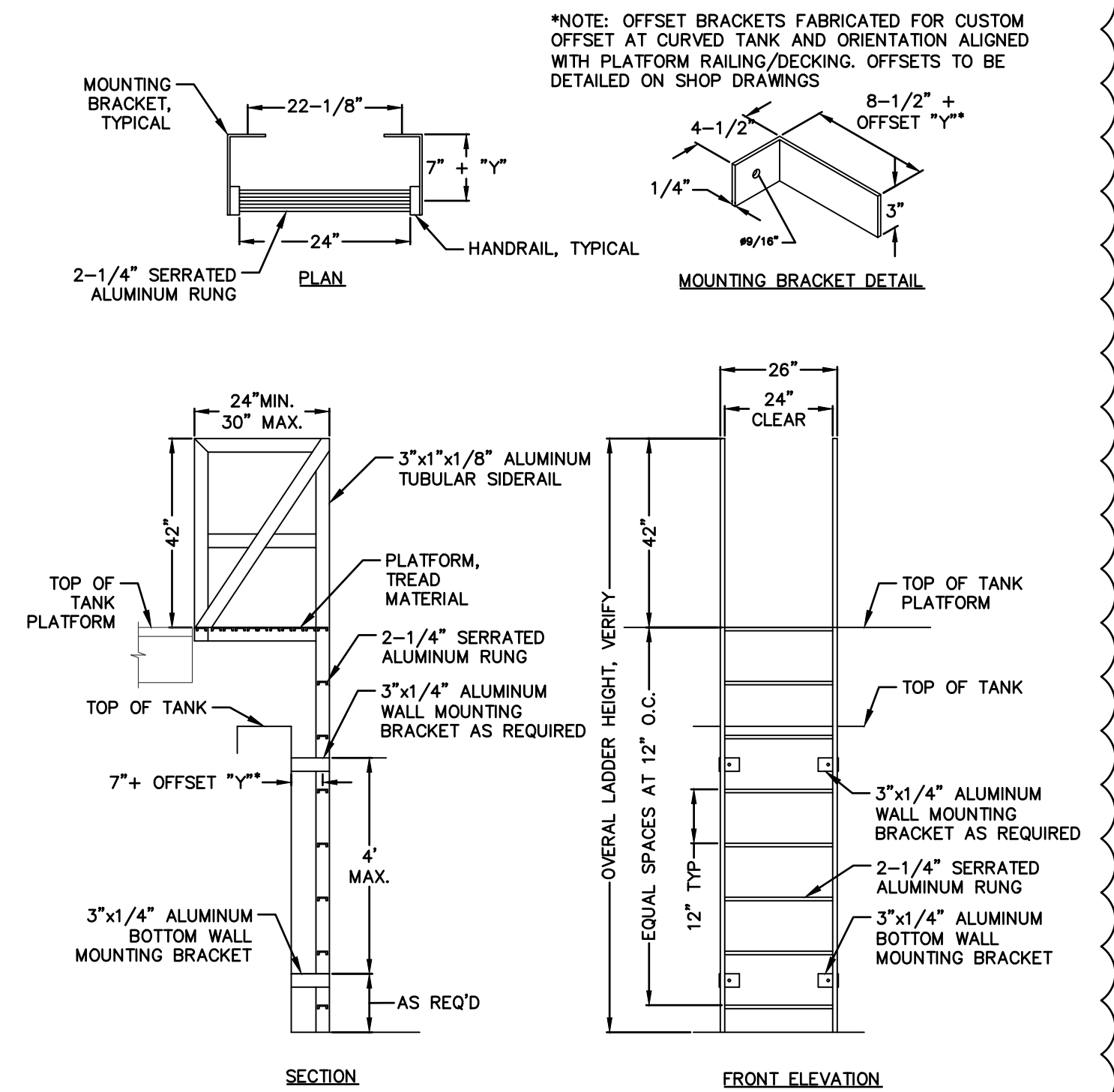
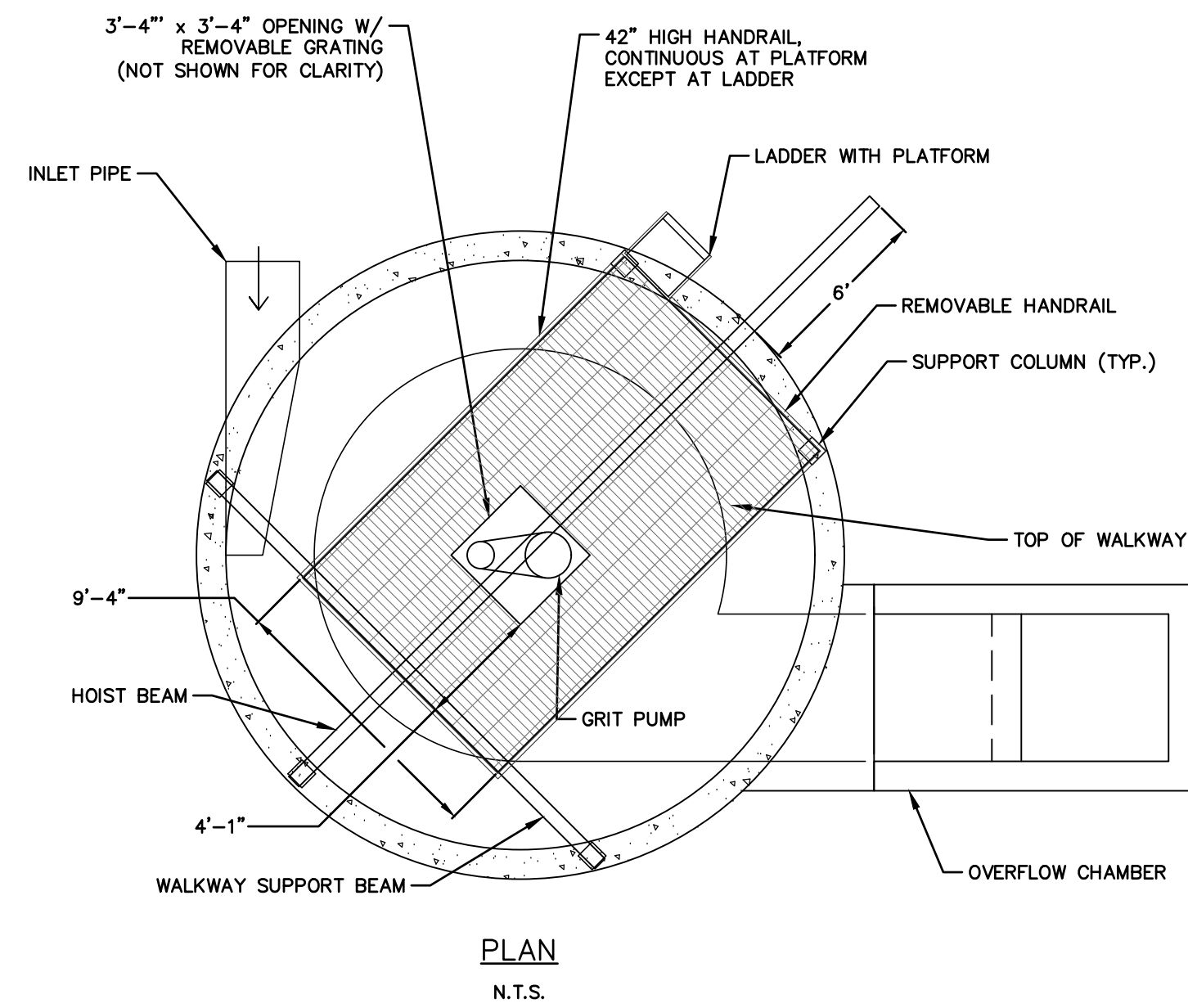
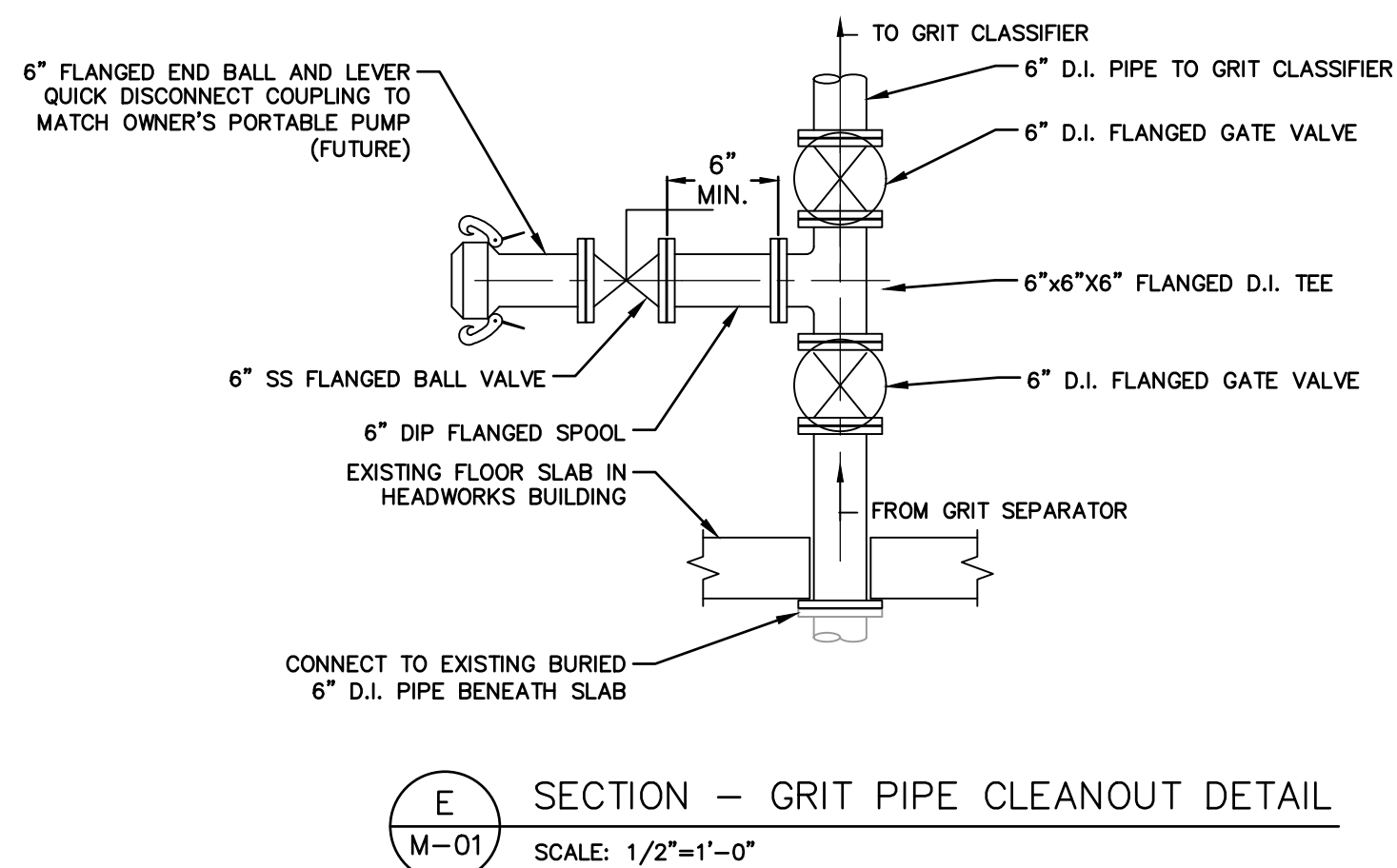
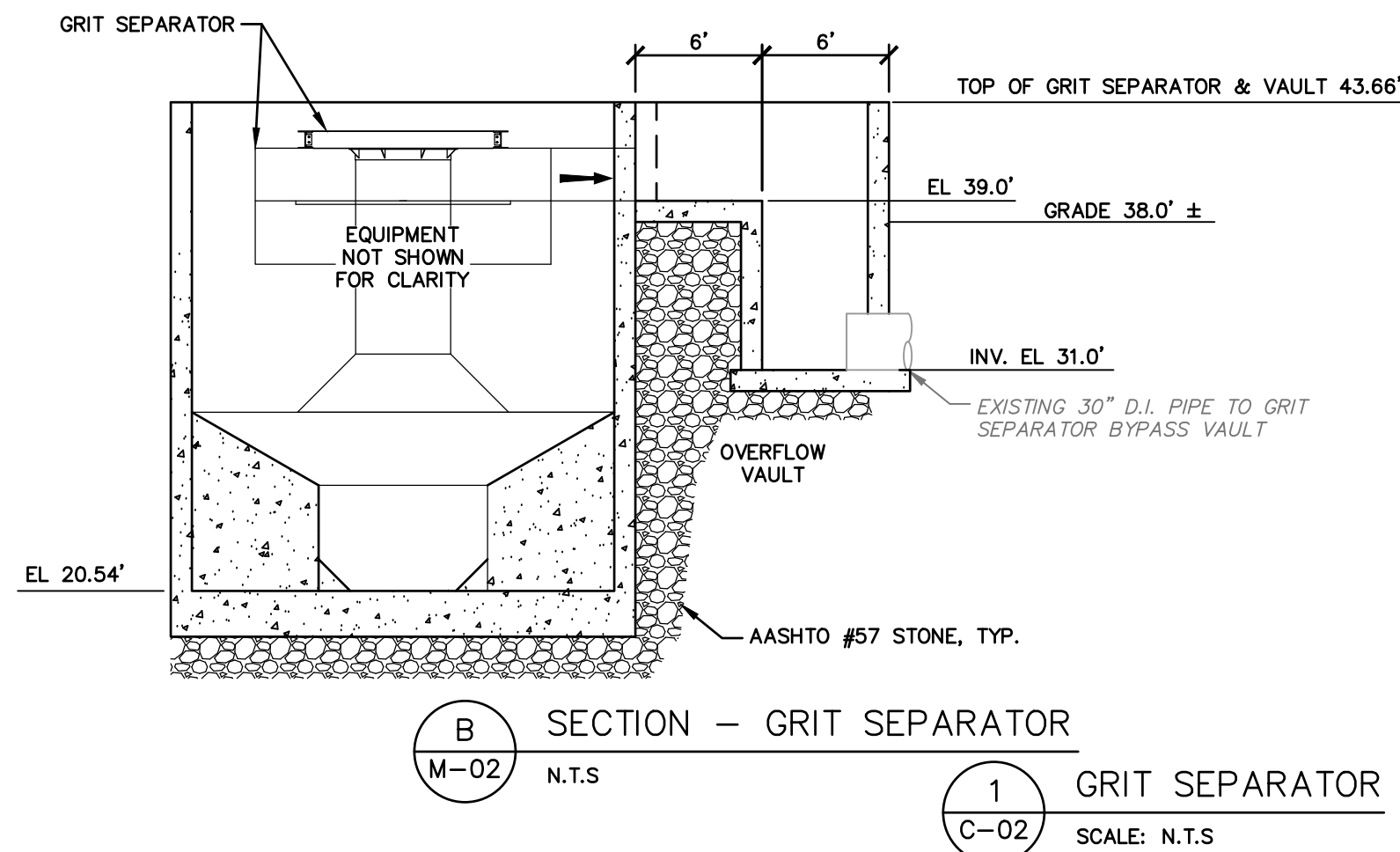
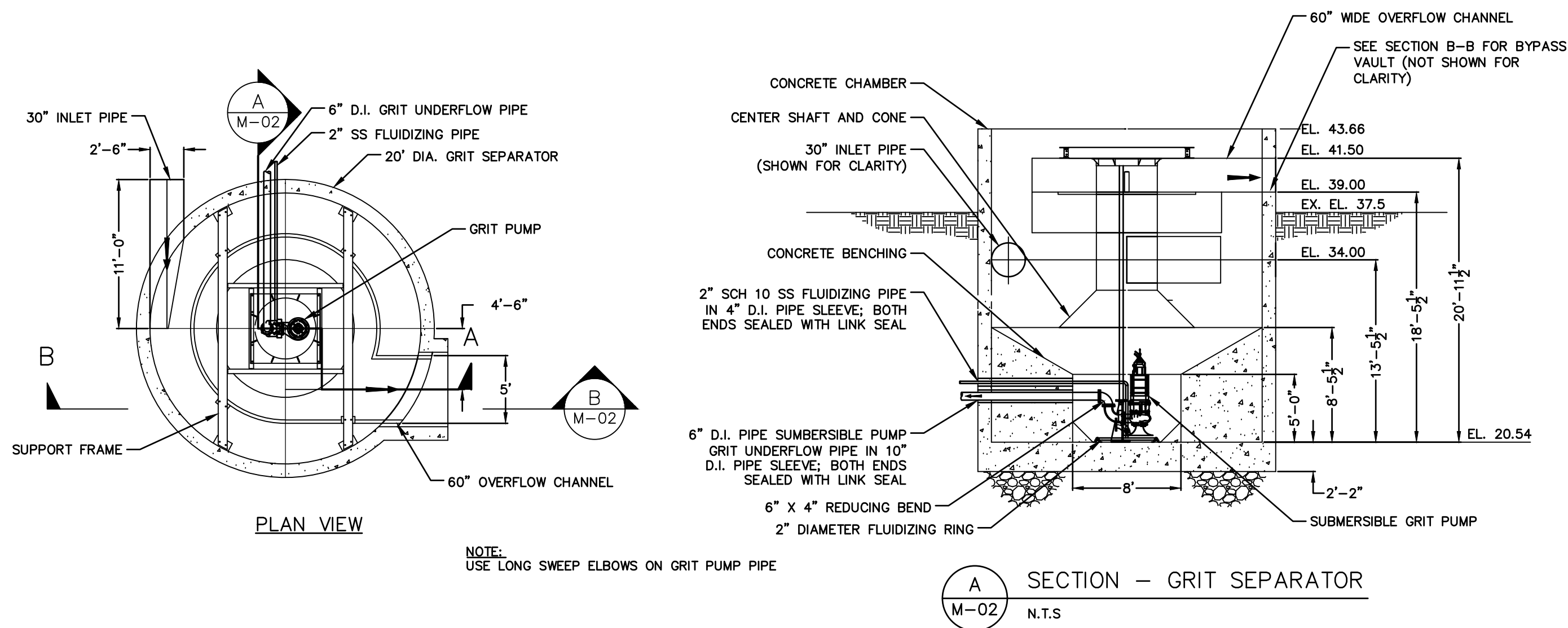
#### 3.3 PROTECTION

- A. Protect installed products until completion of project.
- B. Touch-up, repair or replace damaged products before Substantial Completion.

END OF SECTION

## **ATTACHMENT 004**

FILE LOCATION: F:\Drawing Files\MCA\2017-402 Montville Headworks (Montville)\Drawings\Civil\Production Drawings\M-02.dwg  
FILE NAME: M-02.dwg PLOT DATE: 4/12/2021 4:35:23 PM USER: mcanado



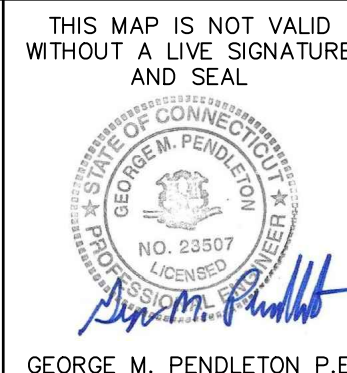
THIS MAP IS A COPYRIGHTED WORK OF MARTINEZ COUCH AND ASSOCIATES, LLC. ALL RIGHTS RESERVED.



1084 Cromwell Avenue, Suite A-2  
Rocky Hill, CT 06067  
Telephone: (860) 436-4364  
Fax: (860) 436-4626  
www.martinezcouch.com

WWTF HEADWORKS IMPROVEMENTS  
MONTVILLE WPCA  
ADDRESS:  
83 PINK ROW  
MONTVILLE, CONNECTICUT 06382

ISSUED FOR BIDDING  
NOT FOR CONSTRUCTION



NO.	DATE	REVISIONS	BY	CHK	APPV
1	4/12/2021	BID ADDENDUM #1	MBR	MBR	GMP
DRAWN: MBR/EN			CHECKED: MBR		
			APPROVED: GMP		
			SCALE: AS NOTED		
			DATE: 3/5/2021		



TOWN OF MONTVILLE  
CONNECTICUT

GRIT SEPARATOR AND  
HEADWORKS DETAILS

CONTRACT NUMBER	DRAWING NUMBER	SHEET
2021-5	M-02.dwg	M-02

## **ATTACHMENT 005**

**TABLE OF CONTENTS**  
**SPECIFICATIONS**

<b>DIVISION 0</b>	<b>REQUIREMENTS AND CONDITIONS</b>	<b>PAGES</b>
00020	INVITATION TO BID	00020-1 to 00020-3
00100	INSTRUCTIONS TO BIDDERS	00100-1 to 00100-12
00300	BID FORMS	00300-1 to 00300-5
00400	SUPPLEMENTS TO BID FORMS	00400-1 to 00490-2
00500	AGREEMENT FORMS	00500-1 to 00500-6
00600	BONDS AND CERTIFICATES	00600-1 to 00615-6
00700	STANDARD GENERAL CONDITIONS	00700-1 to 00700-70
00800	SUPPLEMENTARY CONDITIONS	00800-1 to 00800-20

**OTHER DOCUMENTS**

<b>PART II</b>	<b>STATE AND LOCAL CONTRACT PROVISIONS</b>	
00820	ADDITIONAL ARTICLES	00820-1 to 00820.03-20
00828	UTILITY TELEPHONE NUMBERS	00828-1 to 00828-1
00830	WAGE DETERMINATION SCHEDULE	00830-1 to 00830-1
00860	LIST OF DRAWINGS	00860-1 to 00860-1
00870	INTERIM GUIDANCE FOR MBE AND WBE REQUIREMENTS	00870-1 to 00870-5

<b>DIVISION 1</b>	<b>GENERAL REQUIREMENTS</b>	<b>PAGES</b>
01010	SUMMARY OF WORK	01010-1 to 01010-2
01014	SCOPE AND SEQUENCE OF WORK	01014-1 to 01014-1
01025	MEASUREMENT AND PAYMENT	01025-1 to 01025-1
01035	MODIFICATION PROCEDURES	01035-1 to 01035-2



WWTF HEADWORKS IMPROVMENTS  
MONTVILLE WPCA

TABLE OF CONTENTS  
CONTRACT 2021-05

01040	COORDINATION	01040-1 to 01040-1
01044	PROGRESS	01044-1 to 01044-1
01045	CUTTING, CORING AND PATCHING	01045-1 to 01045-2
01046	CONTROL OF WORK	01046-1 to 01046-5
01050	FIELD ENGINEERING AND SURVEYING	01050-1 to 01050-2
01060	REGULATORY REQUIREMENTS	01060-1 to 01060-2
01090	REFERENCE STANDARDS	01090-1 to 01090-2
01110	ENVIRONMENTAL PROTECTION	01110-1 to 01110-7
01152	APPLICATIONS FOR PAYMENT	01152-1 to 01152-3
01200	PROJECT MEETINGS	01200-1 to 01200-2
01210	PRE-CONSTRUCTION CONFERENCE	01210-1 to 01210-2
01300	SUBMITTALS	01300-1 to 01300-4
01310	PROGRESS SCHEDULES	01310-1 to 01310-2
01370	SCHEDULE OF VALUES	01370-1 to 01370-2
01400	QUALITY CONTROL	01400-1 to 01400-3
01500	TEMPORARY FACILITIES	01500-1 to 01500-3
01510	MAINTENANCE OF FLOW IN EXISTING SEWERS	01510-1 to 01510-1
01570	TRAFFIC REGULATIONS AND CONTROLS	01570-1 to 01570-2
01610	MATERIAL AND EQUIPMENT	01610-1 to 01610-5
01630	SUBSTITUTION AND PRODUCT OPTIONS	01630-1 to 01630-3
01700	CONTRACT CLOSEOUT	01700-1 to 01700-4
01720	AS-BUILT DOCUMENTS	01720-1 to 01720-1
01740	WARRANTIES AND BONDS	01740-1 to 01740-2

**DIVISION 2 SITE WORK**

**PAGES**

02015	TEST PITS	02015-1 to 02015-2
-------	-----------	--------------------

02060	SELECTIVE DEMOLITION	02060-1 to 02060-6
02100	SITE CLEARING	02100-1 to 02100-3
02118	SAW CUT EXISTING PAVEMENT	02118-1 to 02118-1
02150	SHEETING AND STAYBRACING	02150-1 to 02150-5
02205	DUST CONTROL	02205-1 to 02205-2
02215	PAVEMENT REMOVAL	02215-1 to 02215-1
02220	EXCAVATION BACKFILLING AND COMPACTION	02220-1 to 02220-8
02221.	TRENCH EXCAVATION BACKFILLING AND COMPACTION	02221-1 to 02221-2
02234	COMPACTED GRANULAR FILL	02234-1 to 02234-2
02235	PROCESSED AGGREGATE BASE	02235-1 to 02235-2
02240	DEWATERING	02240-1 to 02240-4
02260	FORMATION OF SUBGRADE	02260-1 to 02261-2
02275	EROSION AND SEDIMENTATION CONTROL	02275-1 to 02275-2
02500	BITUMINOUS CONCRETE PAVEMENT	02500-1 to 02500-2
02514	BITUMINOUS TACK COAT	02514-1 to 02514-2
02526	BITUMINOUS CONCRETE LIP CURBING	02526-1 to 02526-2
02831	CHAIN LINK FENCE AND GATES	02831-1 to 02831-5
02936	TURF ESTABLISHMENT	02936-1 to 02936-4

**DIVISION 3 CONCRETE**

**PAGES**

03300	CAST-IN-PLACE CONCRETE	03300-1 to 03300-21
03500	LEAKAGE TESTS FOR CONCRETE STRUCTURES	03500-1 to 03500-2
03732	CONCRETE REPAIR	03732-1 to 03732-4

<b>DIVISION 4</b>	<b>UNIT MASONRY</b>	<b>PAGES</b>
	NOT USED	
<b>DIVISION 5</b>	<b>METALS</b>	<b>PAGES</b>
05100	STRUCTURAL STEEL FRAMING	05100-1 to 05100-11
05510	MISCELLANEOUS ALUMINUM FABRICATION	05510-1 to 05510-4
05511	METAL STAIRS	05511-1 to 05511-9
05513	METAL LADDERS	05513-1 to 05513-4
05521	PIPE AND TUBE RAILINGS	05521-1 to 05521-9
05530	GRATING	05530-1 to 05530-7
<b>DIVISION 6</b>	<b>WOOD</b>	<b>PAGES</b>
	NOT USED	
<b>DIVISION 7</b>	<b>THERMAL AND MOISTURE PROTECTION</b>	<b>PAGES</b>
	NOT USED	
<b>DIVISION 8</b>	<b>DOORS AND WINDOWS</b>	<b>PAGES</b>
	NOT USED	
<b>DIVISION 9</b>	<b>FINISHES</b>	<b>PAGES</b>
	NOT USED	
<b>DIVISION 10</b>	<b>SPECIALTIES</b>	<b>PAGES</b>
	NOT USED	

<b>DIVISION 11</b>	<b>EQUIPMENT</b>	<b>PAGES</b>
11310	PLANT WATER BOOSTER PUMPS	11310-1 TO 11310-10
11342	GRIT REMOVAL EQUIPMENT	11342-1 TO 11342-12
<b>DIVISION 12</b>	<b>FURNISHINGS</b>	<b>PAGES</b>
	NOT USED	
<b>DIVISION 13</b>	<b>SPECIAL CONSTRUCTION</b>	<b>PAGES</b>
	NOT USED	
<b>DIVISION 14</b>	<b>CONVEYING SYSTEMS</b>	<b>PAGES</b>
	HOISTS AND CRANES	14600-1 to 14600-4
<b>DIVISION 15</b>	<b>MECHANICAL</b>	<b>PAGES</b>
15000	PIPING AND VALVING	15000-1 to 15000-24
15140	SUPPORTS AND ANCHORS	15140-1 to 15140-10
<b>DIVISION 16</b>	<b>ELECTRICAL</b>	<b>PAGES</b>
16060	GROUNDING AND BONDING	16060-1 to 16060-4
16073	HANGARS AND SUPPORTS FOR ELECTRICAL SYSTEMS	16073-1 to 16073-4
16091	SLEEVES AND SLEEVE SEALS FOR ELECTRICAL RACEWAY AND CABLING	16091-1 to 16091-3
16120	CONDUCTORS AND CABLES	16120-1 to 16120-3
16130	RACEWAYS AND BOXES	16130-1 to 16130-7
16140	WIRING DEVICES	16140-1 to 16140-5

**APPENDIX 1**

GEOTECHNICAL INVESTIGATION  
PROPOSED HEADWORKS  
BUILDING AND GRIT CHAMBER

WASTEWATER TREATMENT PLANT  
TOWN OF MONTVILLE, CONNECTICUT

BY URS CORPORATION  
DATED MAY 1, 2012

END OF SECTION